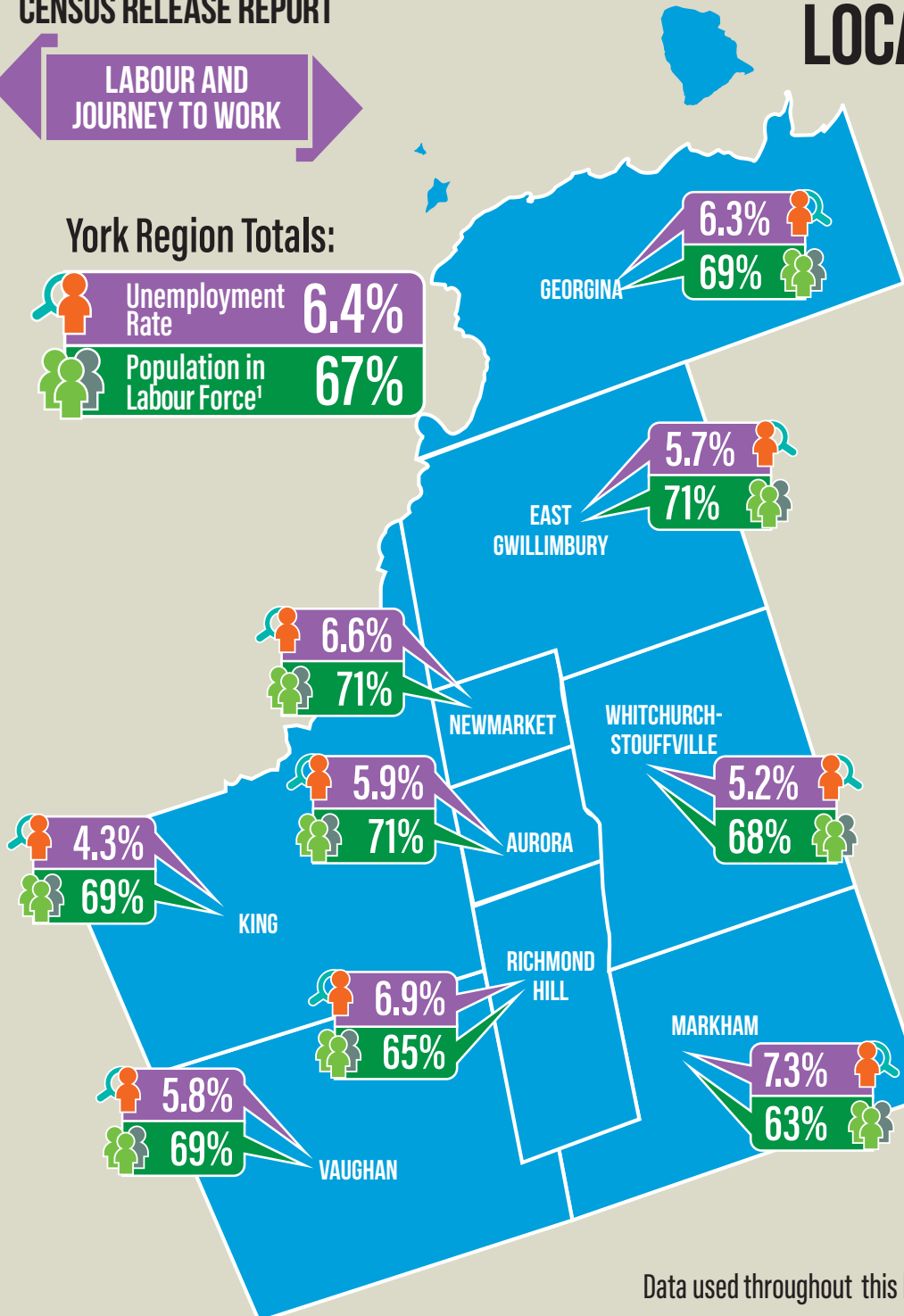


### UNEMPLOYMENT RATE AND LABOUR FORCE<sup>1</sup> BY LOCAL MUNICIPALITY

#### York Region Totals:



York Region's unemployment rate of **6.4 per cent** was the second lowest in the Greater Toronto and Hamilton Area (GTHA) after Halton Region

**53 per cent** of York Region residents worked full time in 2016 compared to 57 per cent in 2006

Since 2006, the number of residents Working at Home and with No Fixed Workplace increased by **32 per cent** and **36 per cent** respectively

Since 2006 there has been a **45 per cent** increase in York Region residents taking transit to work

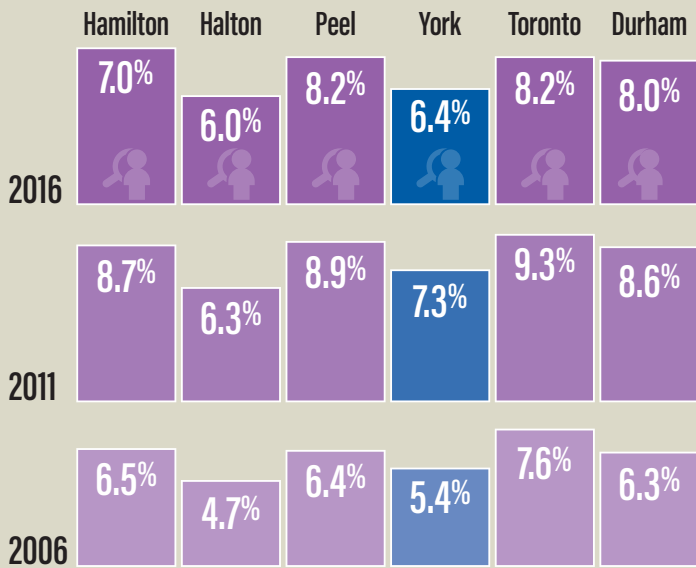
York Region residents have the **second longest commute to work** (averaging 34 minutes) in the GTHA after Durham Region

Data used throughout this bulletin is based on population aged 15 plus

<sup>1</sup>Labour Force - Refers to persons aged 15 plus, who, during the census collection, were either employed or unemployed

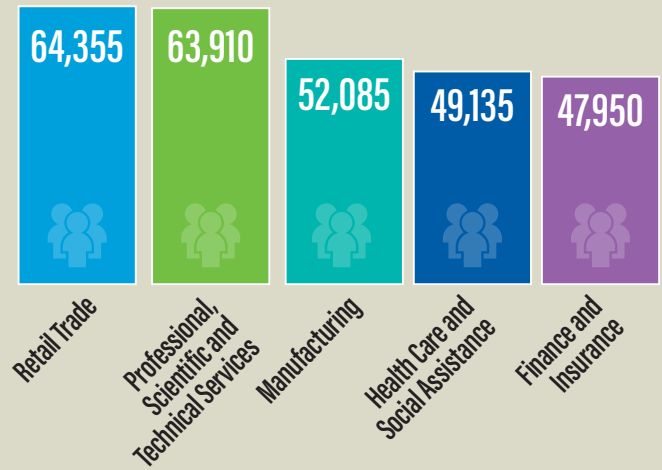
<sup>2</sup>Unemployment Rate - Refers to the unemployed, expressed as a percentage of the labour force

## UNEMPLOYMENT RATES ACROSS THE GTHA

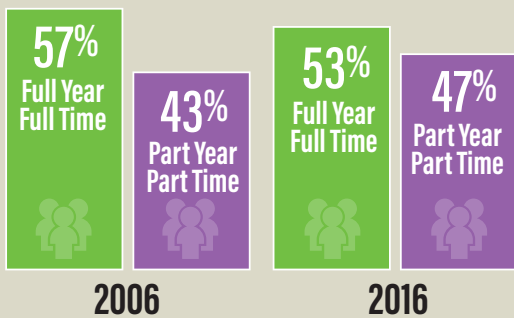


## TOP FIVE INDUSTRIES IN YORK REGION'S EMPLOYED LABOUR FORCE

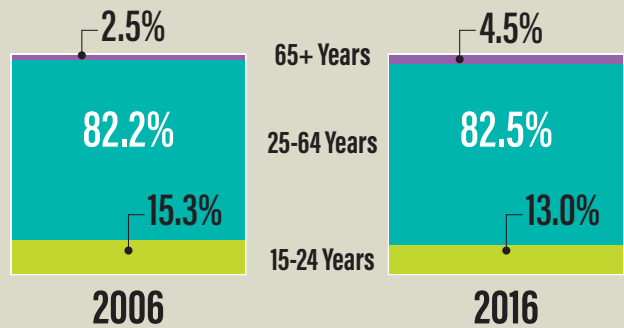
BASED ON THE NORTH AMERICAN INDUSTRY CLASSIFICATION SYSTEM (NAICS)



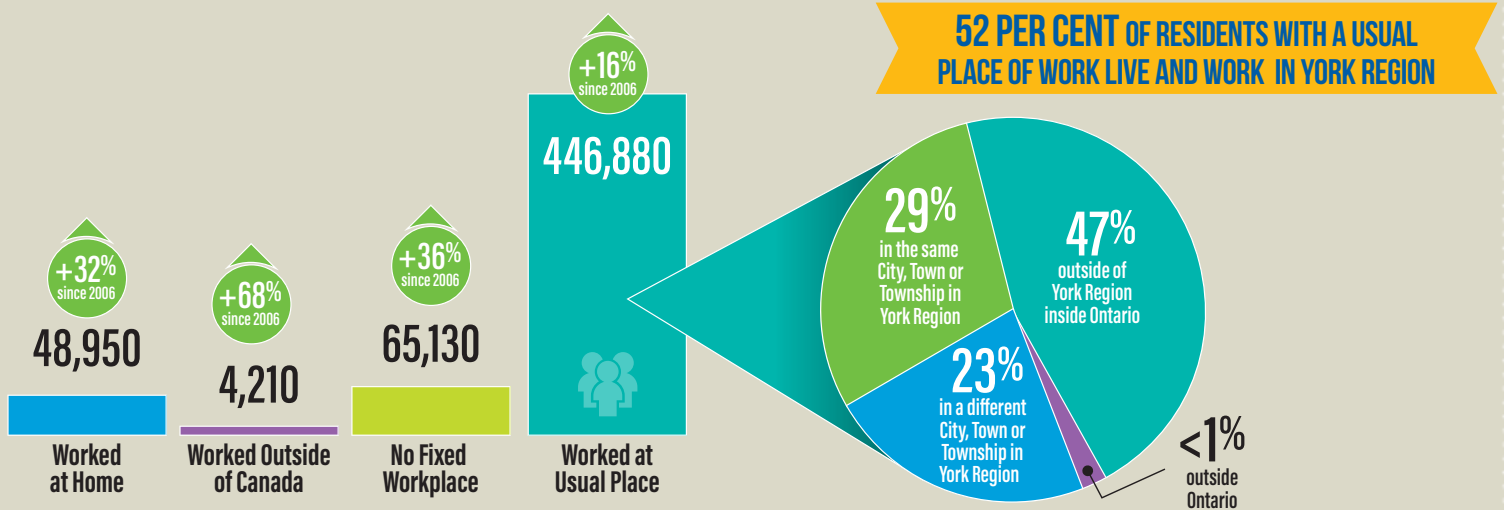
## YORK REGION WORK ACTIVITY<sup>3</sup>



## MORE SENIORS (65+) IN YORK REGION'S LABOUR FORCE<sup>1</sup>



## YORK REGION 2016 EMPLOYED LABOUR FORCE<sup>1</sup> BY PLACE OF WORK STATUS

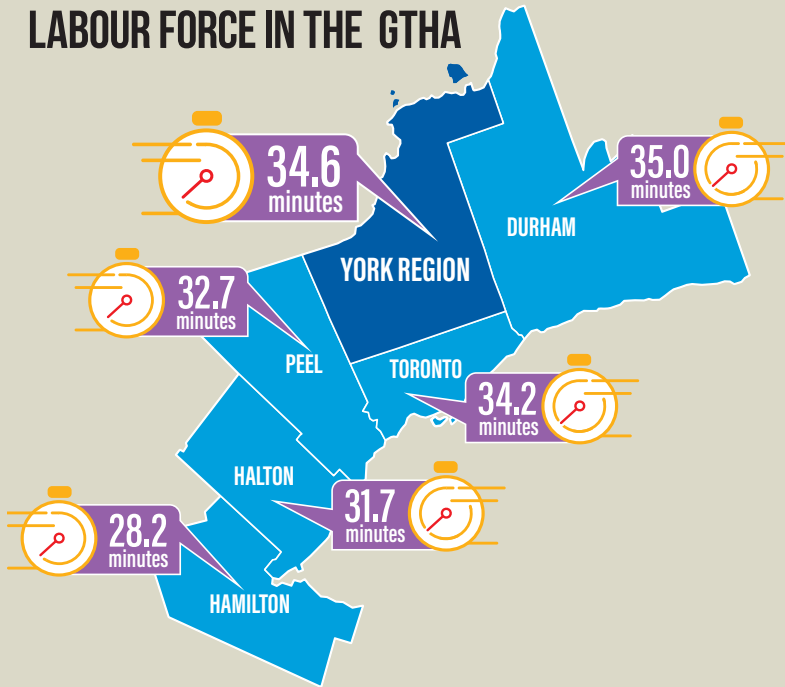


<sup>1</sup> Labour Force - Refers to persons aged 15 plus, who, during the census collection, were either employed or unemployed

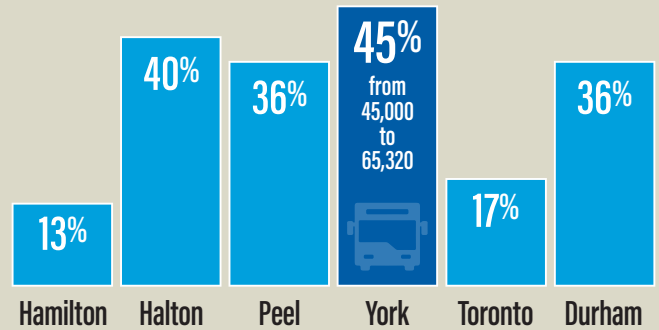
<sup>2</sup> Unemployment Rate - Refers to the unemployed, expressed as a percentage of the labour force

<sup>3</sup> Work Activity - Refers to a person aged 15 years and over who worked for pay or was self-employed in 2015 at all jobs held.

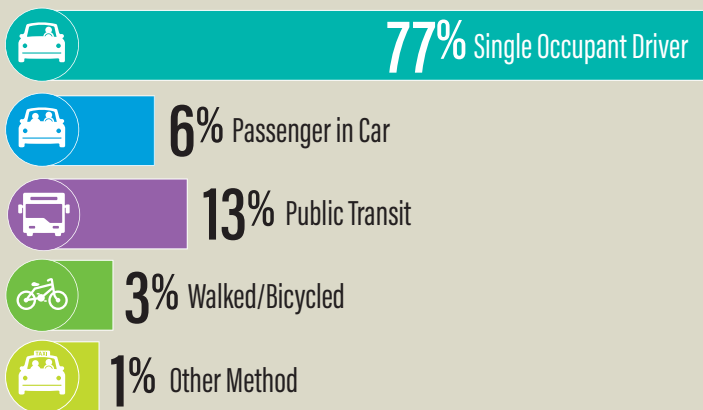
## AVERAGE COMMUTE TIMES FOR THE EMPLOYED LABOUR FORCE IN THE GTHA



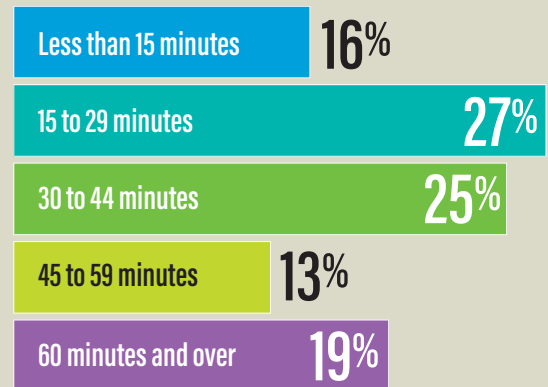
SINCE 2006, THE NUMBER OF RESIDENTS TAKING TRANSIT TO WORK HAS INCREASED ACROSS THE GTHA  
THE HIGHEST INCREASE WAS IN YORK REGION



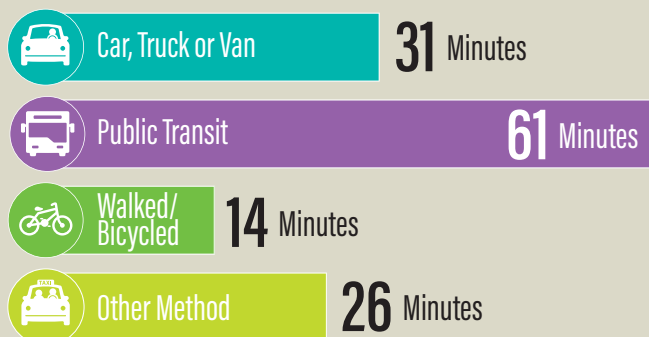
## 2016 MODE OF TRAVEL TO WORK IN YORK REGION



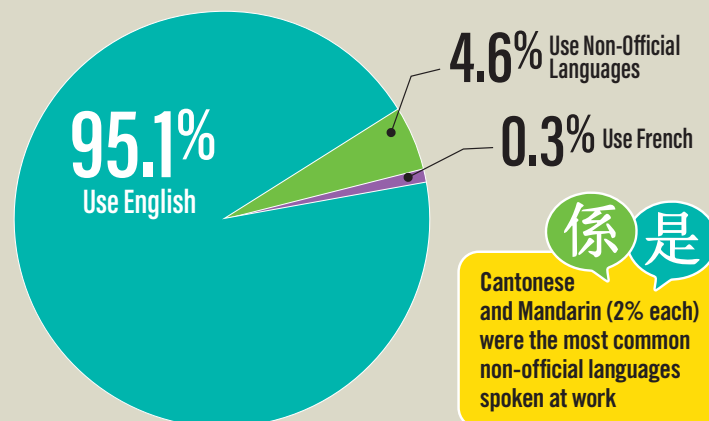
OVER HALF OF YORK REGION'S EMPLOYED LABOUR FORCE COMMUTE MORE THAN 30 MINUTES TO WORK



## AVERAGE COMMUTE TIME BY MODE OF TRAVEL TO WORK IN YORK REGION



## LANGUAGE OF WORK IN YORK REGION



## YORK REGION RESIDENTS WORKING WITH NO FIXED WORKPLACE

Rank	Top 5 Industries	Number of People
1	Construction	20,065
2	Administrative Support, Waste Management and Remediation Services	6,250
3	Transportation and Warehousing	5,415
4	Professional, Scientific and Technical Services	5,290
5	Educational Services	4,455

## YORK REGION RESIDENTS WORKING AT HOME

Rank	Top 5 Industries	Number of People
1	Professional, Scientific and Technical Services	14,035
2	Real Estate and Rental and Leasing	4,690
3	Finance and Insurance	4,165
4	Wholesale Trade	3,330
5	Other Services (except Public Administration)	3,045

## YORK REGION RESIDENTS WORKING AT USUAL PLACE

Rank	Top 5 Industries	Number of People
1	Retail Trade	58,100
2	Manufacturing	47,855
3	Professional, Scientific and Technical Services	43,535
4	Health Care and Social Assistance	42,365
5	Finance and Insurance	41,855

THESE TABLES ARE BASED ON THE NORTH AMERICAN INDUSTRY CLASSIFICATION SYSTEM (NAICS)

### DEFINITIONS

#### Labour Force

Refers to persons aged 15 plus, who, during the census collection, were either employed or unemployed.

Labour force = employed + unemployed.

#### Unemployment Rate

Refers to the unemployed, expressed as a percentage of the labour force.

#### No Fixed Workplace

When a person does not have a fixed address for work or does not go to the same location for work consistently.

#### Part-Time

Persons who worked full year mostly part time or part year mostly full time or part year mostly part time in 2015. Part year is less than 49 weeks and part time is less than 30 hours per week.

For questions, please contact Long Range Planning at paul.bottomley@york.ca or 1-877-464-9675 ext. 71530

For accessible formats or communication support, please contact Corporate Communications at 1-877-464-9675 ext. 71234