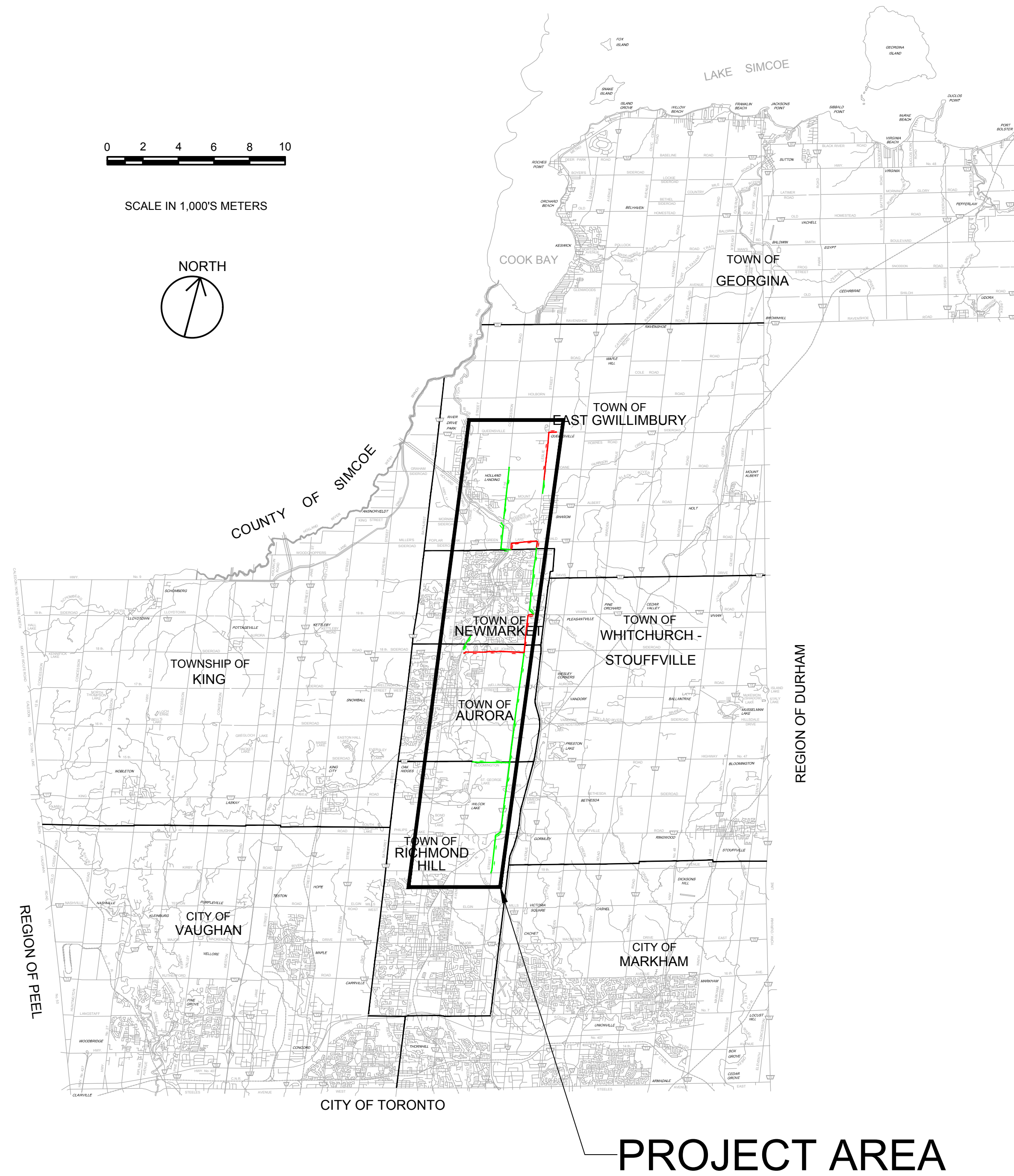




Public Works - Environmental Services

YORK REGION SEWAGE WORKS - PROJECT REPORT NORTH YDSS EXPANSION THE REGIONAL MUNICIPALITY OF YORK



File Location: D:\ACAD\Proj\WorkDir\Projects\840584405-GHD-XX-DWG-CI-0001.dwg Last Saved: October 18, 2023, by s4642 Project: October 18, 2023

W. EMMERSON
REGIONAL CHAIR

E. MAHONEY
COMMISSIONER OF PUBLIC WORKS

OCTOBER 2023



DRAWING INDEX

GENERAL	DWG. No.	DRAWING DESCRIPTION
01	CI-D001	COVER SHEET
02	CI-D002	DRAWING LIST AND GENERAL NOTES
03	CI-D003	SITE PLAN
CIVIL		

SHEET NO.	DRAWING NUMBER	DRAWING DESCRIPTION
04	CI-D004	Y9-A NEW MARKET EAST SPS - SITE PLAN
05	CI-D005	Y12-A 2ND CONCESSION NORTH GRAVITY SEWER
06	CI-D006	Y12-A 2ND CONCESSION NORTH GRAVITY SEWER STA. 0+000 TO 3+943
07	CI-D007	Y12-B 2ND CONCESSION SOUTH GRAVITY SEWER PLAN & PROFILE STA. 0+000 TO 2+089
08	CI-D008	Y9-B NEWMARKET EAST SPS FORCEMAIN STA. 0+000 TO 2+186
09	CI-D009	Y11-B QUEENSVILLE EAST SPS FORCEMAIN PLAN & PROFILE STA. 0+000 TO 1+800
10	CI-D010	Y11-B QUEENSVILLE EAST SPS FORCEMAIN PLAN & PROFILE STA. 1+800 TO 3+877
11	CI-D011	Y3-B AURORA EAST SPS - SITE PLAN
12	CI-D012	Y13-B MULOCK SPS - SITE PLAN
13	CI-D013	Y10 AURORA SPS GRAVITY SWR TWINNING PLAN & PROFILE STA. 0+000 TO 0+879
14	CI-D014	Y13-A LESLIE ST TRNK SWR PHASE 3 PLAN & PROFILE STA. 0+000 TO 2+600
15	CI-D015	Y13-A LESLIE ST TRNK SWR PHASE 3 PLAN & PROFILE STA. 2+600 TO 4+205
16	CI-D016	Y3-C AURORA EAST SPS F/M PLAN & PROFILE STA. 0+000 TO 1+800
17	CI-D017	Y3-C AURORA EAST SPS F/M PLAN & PROFILE STA. 1+800 TO 3+424
18	CI-D018	Y13-C MULOCK SPS F/M PLAN & PROFILE STA. 2+100 TO 4+500
19	CI-D019	Y1-A LESLIE STREET TRUNK SEWER PHASE 1&2 STA. 0+000 TO 3+100
20	CI-D020	Y1-A LESLIE STREET TRUNK SEWER PHASE 1&2 STA. 3+100 TO 6+100
21	CI-D021	Y1-A LESLIE STREET TRUNK SEWER PHASE 1&2 STA. 6+100 TO 9+100
22	CI-D022	Y1-A LESLIE STREET TRUNK SEWER PHASE 1&2 STA. 9+100 TO 12+100
23	CI-D023	Y1-A LESLIE STREET TRUNK SEWER PHASE 1&2 STA. 12+100 TO 14+720
24	CI-D024	Y14 BLOOMINGTON INCPR SWR PLAN & PROFILE STA. 0+000 TO 2+108

84405-GHD-XX-XX-DRG-CI-D002.dwg



GHD Ltd.
455 Phillip Street
Waterloo, Ontario N2L 3X2 Canada
T 1 519 884 0510 F 1 519 884 0525
Conditions of Use

This document and the ideas and designs incorporated herein, as an instrument of professional service, is the property of GHD. This document may only be used by GHD's client (and any other person who GHD has agreed can use this document) for the purpose for which it was prepared and must not be used by any other person or for any other purpose.

No.	DATE	REVISIONS	BY
1	2023-09-29	ISSUED FOR YRSW PROJECT REPORT	T.C.

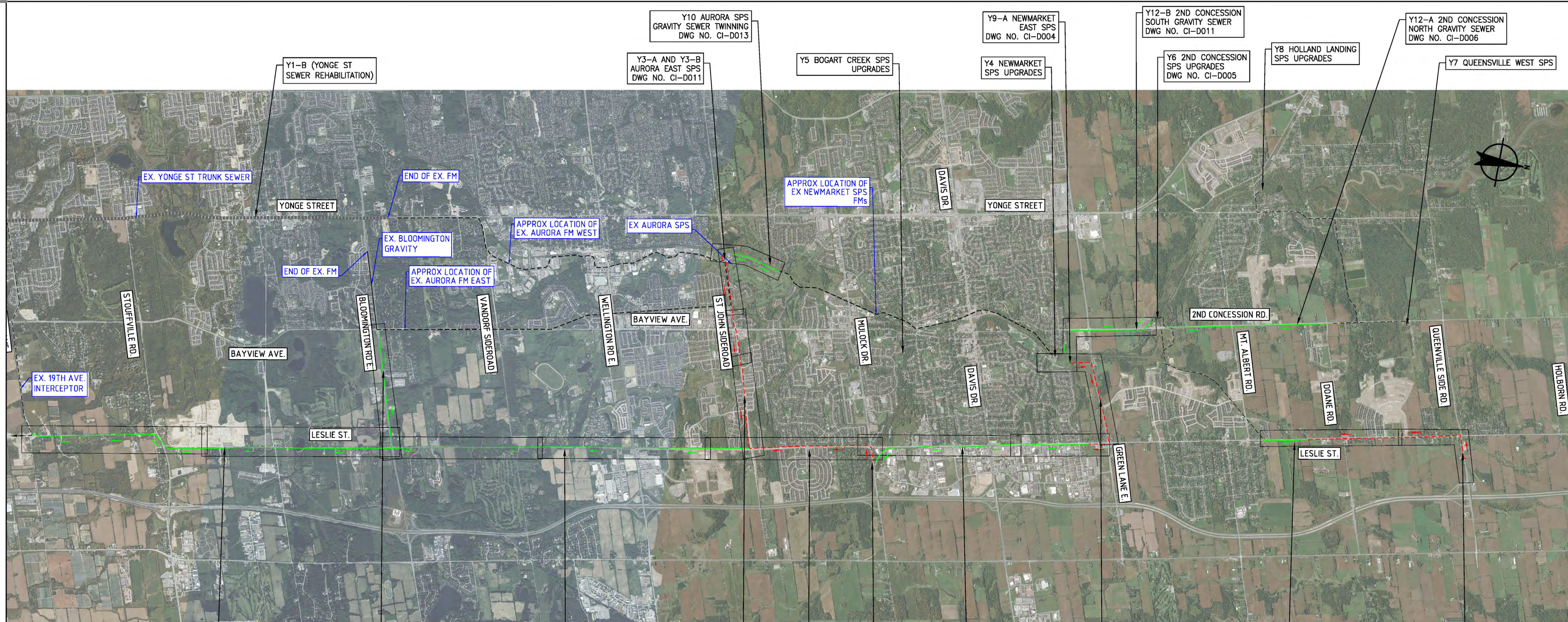


DATE APR. 2023
DESIGN
DRAWN E.Lee
CHECKED G.Procunier

YORK REGION SEWAGE WORKS PROJECT
NORTH YDSS EXPANSION

DRAWING LIST AND
GENERAL NOTES

SCALE
DWG. NO. CI-D002
CONT. NO. 0
SHEET NO. 2



Y1-A1 LESLIE STREET TRUNK SEWER 1
DWG NO. CI-D019
DWG NO. CI-D020
DWG NO. CI-D021

Y14 - BLOOMINGTON GRAVITY SEWER
DWG NO. CI-D024

Y1-A2 LESLIE STREET TRUNK SEWER 2
DWG NO. CI-D021
DWG NO. CI-D022
DWG NO. CI-D023

Y3-C AURORA B SPS FORCEMAINS
DWG NO. CI-D016
DWG NO. CI-D017

Y13-C MULOCK SPS FM
DWG NO. CI-D018

Y13-B LESLIE STREET TRUNK SEWER 3
DWG NO. CI-D014
DWG NO. CI-D015

Y9-B NEWMARKET EAST SPS FM
DWG NO. CI-D008

Y11-B QUEENSVILLE EAST FM
DWG NO. CI-D009
DWG NO. CI-D010

Y11-A QUEENSVILLE EAST SPS

- GENERAL NOTES:
1. THE HORIZONTAL AND VERTICAL ALIGNMENTS PRESENTED ON THIS SET OF DRAWINGS IS BASED ON A CONCEPTUAL DESIGN CREATED AS A PROOF OF CONCEPT TO CONVEY ANTICIPATED WASTEWATER FLOWS AS OUTLINED IN THE PROJECT REPORT. THE FINAL LOCATIONS AND ELEVATIONS OF PUMP STATIONS, GRAVITY SEWERS, FORCEMAINS, AND OTHER SUPPORTING INFRASTRUCTURE ARE CONCEPTUAL AND SUBJECT TO REVISION WITHIN THE STUDY AREAS FOLLOWING FURTHER FIELD INVESTIGATION, UTILITY COORDINATION, AND DESIGN.
 2. ALL ALIGNMENTS ARE SUBJECT TO CONSIDERATION OF CONCURRENT PROJECTS BY OTHER STAKEHOLDERS.
 3. THE VERTICAL PROFILE IS SUBJECT TO CHANGE BASED ON DETAILED ENGINEERING INVESTIGATIONS AND ENGINEERING ANALYSIS. DEPTH OF SEWER INVERTS AND SHAFTS MAY BE ADJUSTED TO SUIT HYDRAULIC IMPROVEMENTS, CLEARANCES BELOW WATER BODIES, EXISTING INFRASTRUCTURE, AND GEOTECHNICAL AND HYDROGEOLOGICAL CONDITIONS.
 4. POTENTIAL COMPOUND AREAS ARE IDENTIFIED ON THE DRAWINGS AND ARE SUBJECT TO CHANGE IN SIZE, SHAPE, LOCATION AND QUANTITY IN ORDER TO SUPPORT CONSTRUCTION ACTIVITIES.
 5. WHERE CONCEPT DESIGN LOCATIONS ARE LOCATED WITHIN CONSERVATION AUTHORITY REGULATED AREAS, FURTHER INVESTIGATION WILL BE UNDERTAKEN TO DETERMINE AND MINIMIZE IMPACTS. IF CONSTRUCTION WITHIN A FLOODPLAIN AREA CANNOT BE AVOIDED THEN THE LOCATIONS WHERE FLOODPLAIN STORAGE OR COMPENSATION COULD BE ACCOMMODATED WILL BE IDENTIFIED DURING DESIGN.
 6. REGION OF YORK ORTHOPHOTOGRAPHY PROVIDED BY ArcGIS

THE LOCATION OF UTILITIES IS APPROXIMATE ONLY, AND THE EXACT LOCATION SHOULD BE DETERMINED BY CONSULTING THE MUNICIPAL AUTHORITIES AND UTILITY COMPANIES CONCERNED.

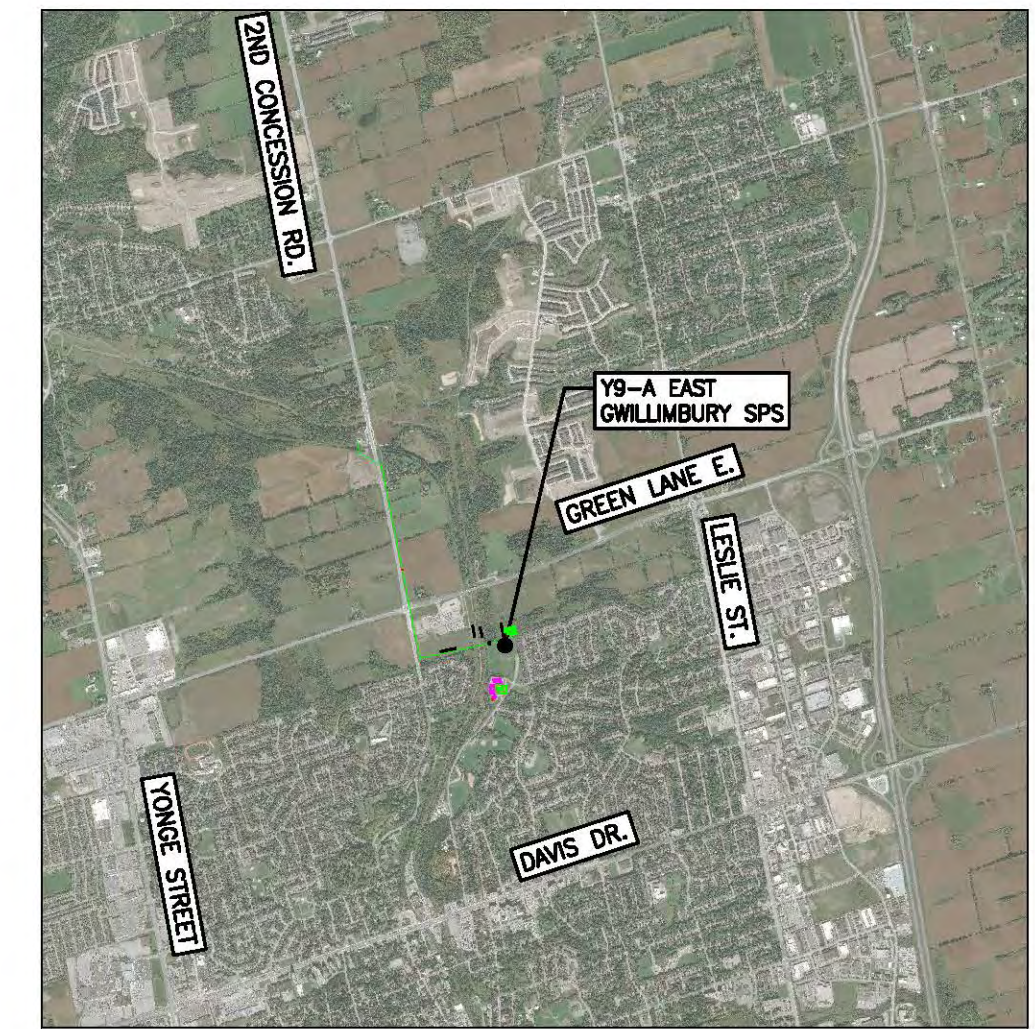
GHD
GHD Ltd.
455 Phillip Street
Waterloo, Ontario N2L 3X2 Canada
T 1 519 884 0510 F 1 519 884 0525
Conditions of Use
This document and the ideas and designs incorporated herein, as an instrument of professional service, is the property of GHD. This document may only be used by GHD's client (and any other person who GHD has agreed can use this document) for the purpose for which it was prepared and must not be used by any other person or for any other purpose.

No.	DATE	REVISIONS	BY
1	2023-09-29	ISSUED FOR YRSW PROJECT REPORT	T.C.



DATE MAY 2023	YORK REGION SEWAGE WORKS NORTH YDSS EXPANSION YDSS NORTH EXPANSION SITE PLAN	SCALE NTS
DESIGN		DWG. NO. CI-D003
DRAWN E.Lee		CONT. NO. 0
CHECKED G.Procunier		SHEET NO. 3

B:4405-GHD-XX-XX-DRG-CI-D003.dwg



KEY PLAN
N.T.S.

LEGEND	
SYMBOLS	DESCRIPTION
	PROTECTED COUNTRY SIDE
	LSRCA / TRCA REGULATORY LIMIT
	SHAFT LOCATION
	GRAVITY ALIGNMENT
	FORCEMAIN ALIGNMENT
	LAND PARCELS
	CONSTRUCTION COMPOUND

GENERAL NOTES:

1. THE HORIZONTAL AND VERTICAL ALIGNMENTS PRESENTED ON THIS SET OF DRAWINGS IS BASED ON A CONCEPTUAL DESIGN CREATED AS A PROOF OF CONCEPT TO CONVEY ANTICIPATED WASTEWATER FLOWS AS OUTLINED IN THE PROJECT REPORT. THE FINAL LOCATIONS AND ELEVATIONS OF PUMP STATIONS, GRAVITY SEWERS, FORCEMAINS, AND OTHER SUPPORTING INFRASTRUCTURE ARE CONCEPTUAL AND SUBJECT TO REVISION WITHIN THE STUDY AREAS FOLLOWING FURTHER FIELD INVESTIGATION, UTILITY COORDINATION, AND DESIGN.
2. ALL ALIGNMENTS ARE SUBJECT TO CONSIDERATION OF CONCURRENT PROJECTS BY OTHER STAKEHOLDERS.
3. THE VERTICAL PROFILE IS SUBJECT TO CHANGE BASED ON DETAILED ENGINEERING INVESTIGATIONS AND ENGINEERING ANALYSIS. DEPTH OF SEWER INVERTS AND SHAFTS MAY BE ADJUSTED TO SUIT HYDRAULIC IMPROVEMENTS, CLEARANCES BELOW WATER BODIES, EXISTING INFRASTRUCTURE, AND GEOTECHNICAL AND HYDROGEOLOGICAL CONDITIONS.
4. POTENTIAL COMPOUND AREAS ARE IDENTIFIED ON THE DRAWINGS AND ARE SUBJECT TO CHANGE IN SIZE, SHAPE, LOCATION AND QUANTITY IN ORDER TO SUPPORT CONSTRUCTION ACTIVITIES.
5. WHERE CONCEPT DESIGN LOCATIONS ARE LOCATED WITHIN CONSERVATION AUTHORITY REGULATED AREAS, FURTHER INVESTIGATION WILL BE UNDERTAKEN TO DETERMINE AND MINIMIZE IMPACTS. IF CONSTRUCTION WITHIN A FLOODPLAIN AREA CANNOT BE AVOIDED THEN THE LOCATIONS WHERE FLOODPLAIN STORAGE OR COMPENSATION COULD BE ACCOMMODATED WILL BE IDENTIFIED DURING DESIGN.
6. REGION OF YORK ORTHOPHOTOGRAPHY PROVIDED BY ArcGIS



84405-GHD-XX-09-DRG-CI-D004.dwg

GHD Ltd.
455 Phillip Street
Waterloo, Ontario N2L 3X2 Canada
T 1 519 884 0510 F 1 519 884 0525
Conditions of Use

This document and the ideas and designs incorporated herein, as an instrument of professional service, is the property of GHD. This document may only be used by GHD's client (and any other person who GHD has agreed can use this document) for the purpose for which it was prepared and must not be used by any other person or for any other purpose.

No.	DATE	REVISIONS	BY
1	2023-09-29	ISSUED FOR YRSW PROJECT REPORT	T.C.

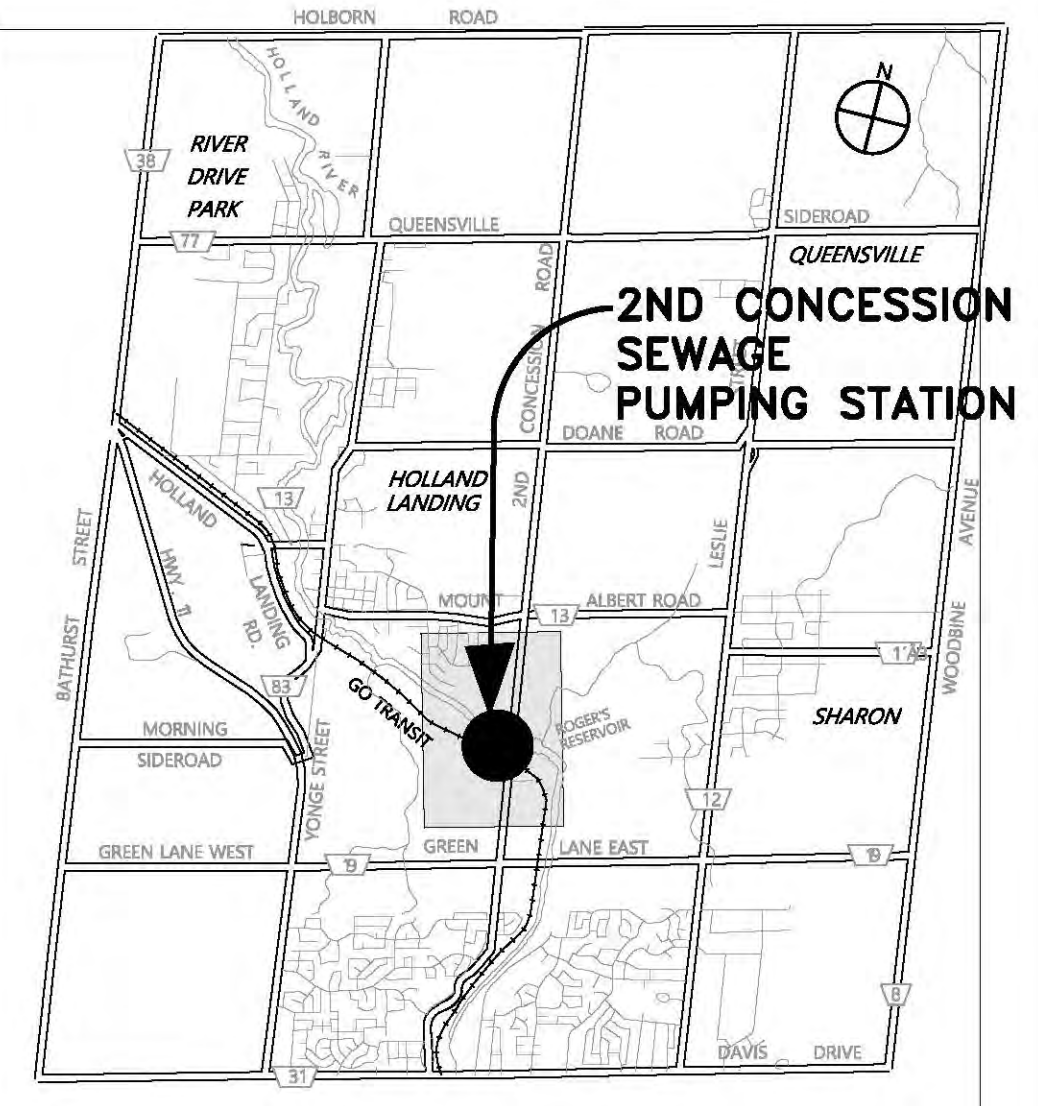
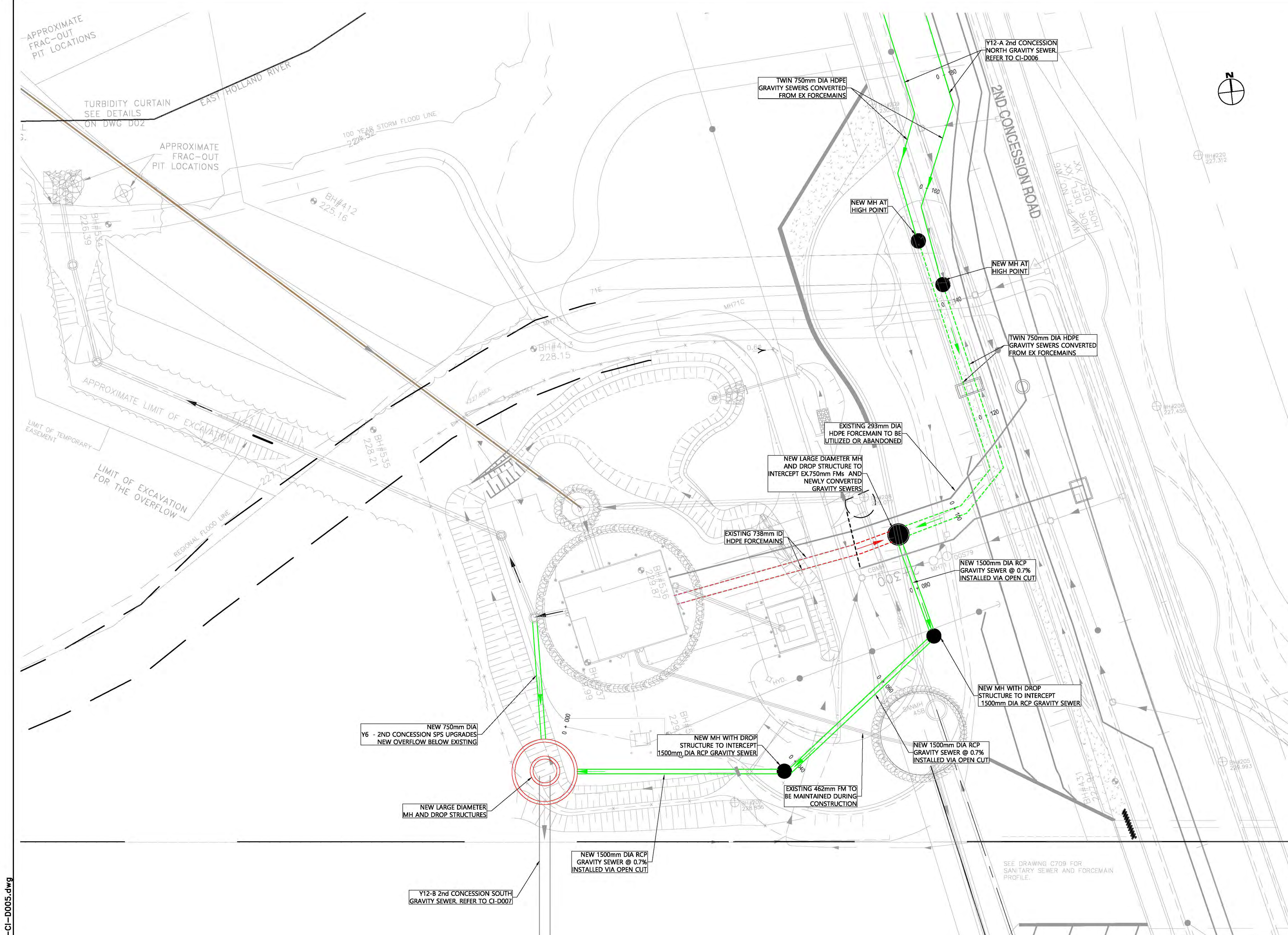
DATE	APR. 2023
DESIGN	
DRAWN	E.Lee
CHECKED	G.Procunier

YORK REGION SEWAGE WORKS
NORTH YDSS EXPANSION

Y9-A NEWMARKET EAST SPS
SITE PLAN

SCALE	1:1000
DWG. NO.	CI-D004
CONT. NO.	0
SHEET NO.	4

84405-GHD-XX-14-DRG-CI-D005.dwg



KEY PLAN
N.T.S

LEGEND	
SYMBOLS	DESCRIPTION
	PROTECTED COUNTRY SIDE
	LSRCA / TRCA REGULATORY LIMIT
	SHAFT LOCATION
	GRAVITY ALIGNMENT
	FORCEMAIN ALIGNMENT
	LAND PARCELS
	CONSTRUCTION COMPOUND

- GENERAL NOTES:
- THE HORIZONTAL AND VERTICAL ALIGNMENTS PRESENTED ON THIS SET OF DRAWINGS IS BASED ON A CONCEPTUAL DESIGN CREATED AS A PROOF OF CONCEPT TO CONVEY ANTICIPATED WASTEWATER FLOWS AS OUTLINED IN THE PROJECT REPORT. THE FINAL LOCATIONS AND ELEVATIONS OF PUMP STATIONS, GRAVITY SEWERS, FORCEMAINS, AND OTHER SUPPORTING INFRASTRUCTURE ARE CONCEPTUAL AND SUBJECT TO REVISION WITHIN THE STUDY AREAS FOLLOWING FURTHER FIELD INVESTIGATION, UTILITY COORDINATION, AND DESIGN.
 - ALL ALIGNMENTS ARE SUBJECT TO CONSIDERATION OF CONCURRENT PROJECTS BY OTHER STAKEHOLDERS.
 - THE VERTICAL PROFILE IS SUBJECT TO CHANGE BASED ON DETAILED ENGINEERING INVESTIGATIONS AND ENGINEERING ANALYSIS. DEPTH OF SEWER INVERTS AND SHAFTS MAY BE ADJUSTED TO SUIT HYDRAULIC IMPROVEMENTS, CLEARANCES BELOW WATER BODIES, EXISTING INFRASTRUCTURE, AND GEOTECHNICAL AND HYDROGEOLOGICAL CONDITIONS.
 - POTENTIAL COMPOUND AREAS ARE IDENTIFIED ON THE DRAWINGS AND ARE SUBJECT TO CHANGE IN SIZE, SHAPE, LOCATION AND QUANTITY IN ORDER TO SUPPORT CONSTRUCTION ACTIVITIES.
 - WHERE CONCEPT DESIGN LOCATIONS ARE LOCATED WITHIN CONSERVATION AUTHORITY REGULATED AREAS, FURTHER INVESTIGATION WILL BE UNDERTAKEN TO DETERMINE AND MINIMIZE IMPACTS. IF CONSTRUCTION WITHIN A FLOODPLAIN AREA CANNOT BE AVOIDED THEN THE LOCATIONS WHERE FLOODPLAIN STORAGE OR COMPENSATION COULD BE ACCOMMODATED WILL BE IDENTIFIED DURING DESIGN.
 - REGION OF YORK ORTHOPHOTOGRAPHY PROVIDED BY ArcGIS

THE LOCATION OF UTILITIES IS APPROXIMATE ONLY, AND THE EXACT LOCATION SHOULD BE DETERMINED BY CONSULTING THE MUNICIPAL AUTHORITIES AND UTILITY COMPANIES CONCERNED.

1:300 0 3m 6m



GHD Ltd.
455 Phillip Street
Waterloo, Ontario N2L 3X2 Canada
T 1 519 884 0510 F 1 519 884 0525
Conditions of Use
This document and the ideas and designs incorporated herein, as an instrument of professional service, is the property of GHD. This document may only be used by GHD's client (and any other person who GHD has agreed can use this document) for the purpose for which it was prepared and must not be used by any other person or for any other purpose.

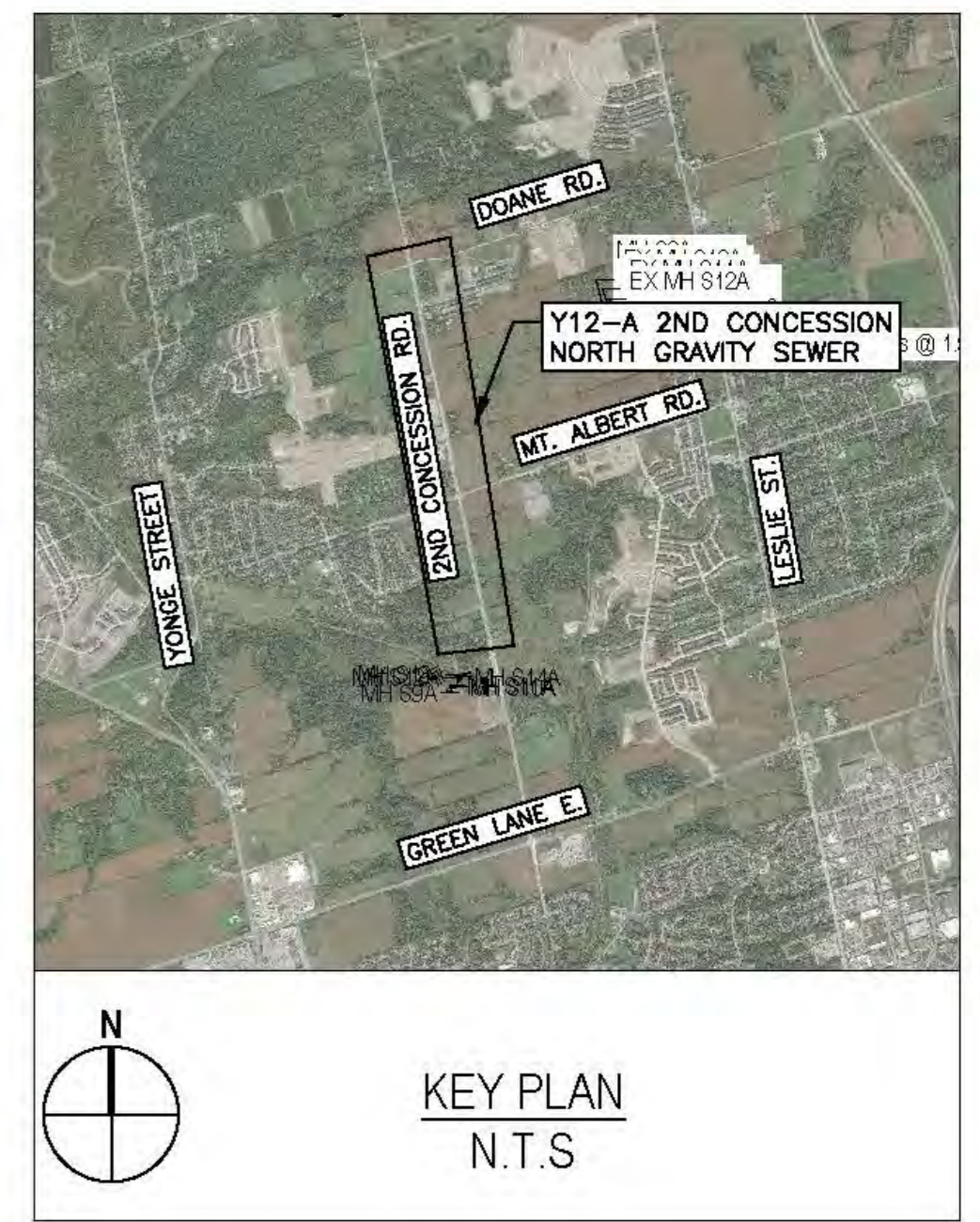
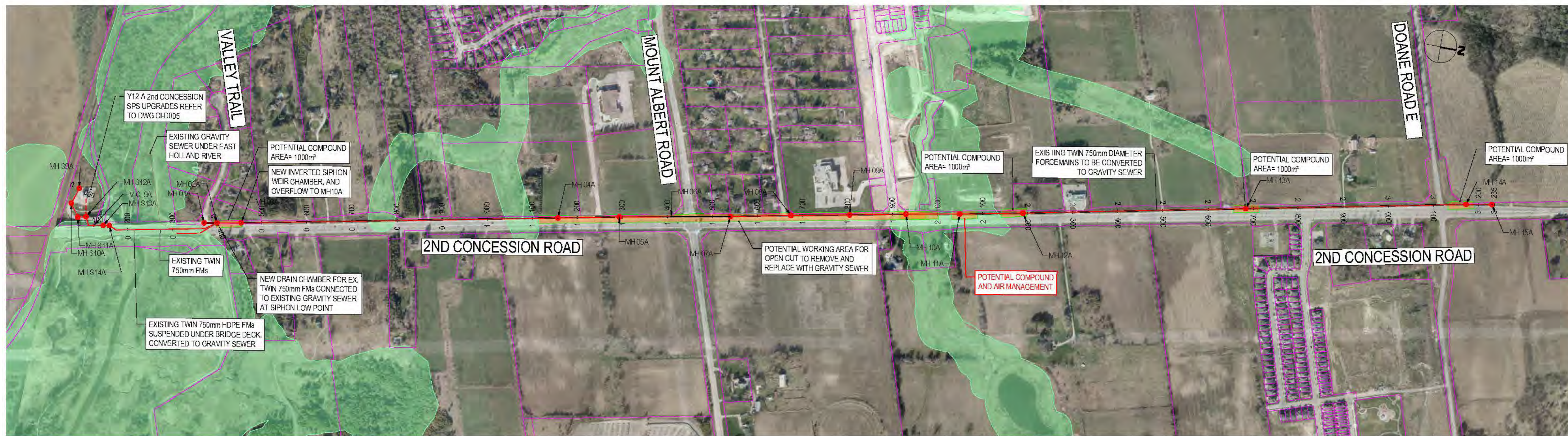
No.	DATE	REVISIONS	BY
1	2023-09-29	ISSUED FOR YRSW PROJECT REPORT	T.C.



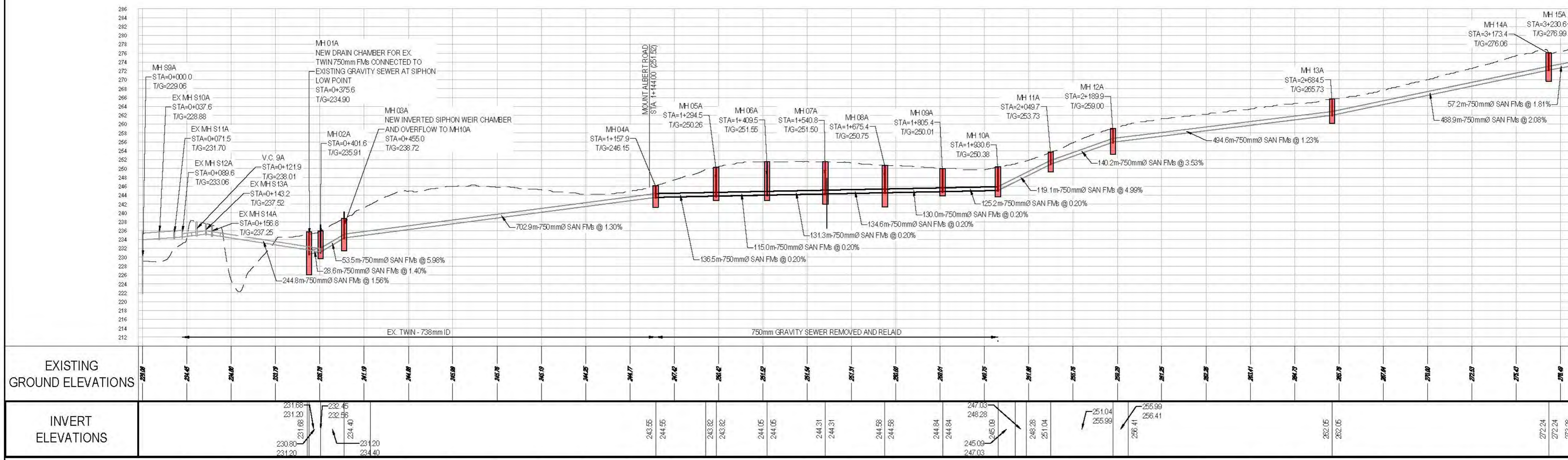
DATE	APR. 2023
DESIGN	
DRAWN	E.Lee
CHECKED	G.Procunier

YORK REGION SEWAGE WORKS
NORTH YDSS EXPANSION
SYSTEM UPGRADES CONCEPTUAL DESIGN
Y12-A 2ND CONCESSION
NORTH GRAVITY SEWER

SCALE	AS SHOWN
DWG. NO.	CI-D005
CONT. NO.	0
SHEET NO.	5



LEGEND	
SYMBOLS	DESCRIPTION
	PROTECTED COUNTRY SIDE
	LSRCA / TRCA REGULATORY LIMIT
	SHAFT LOCATION
	GRAVITY ALIGNMENT
	FORCEMAIN ALIGNMENT
	LAND PARCELS
	CONSTRUCTION COMPOUND



- GENERAL NOTES:
- THE HORIZONTAL AND VERTICAL ALIGNMENTS PRESENTED ON THIS SET OF DRAWINGS IS BASED ON A CONCEPTUAL DESIGN CREATED AS A PROOF OF CONCEPT TO CONVEY ANTICIPATED WASTEWATER FLOWS AS OUTLINED IN THE PROJECT REPORT. THE FINAL LOCATIONS AND ELEVATIONS OF PUMP STATIONS, GRAVITY SEWERS, FORCEMAINS, AND OTHER SUPPORTING INFRASTRUCTURE ARE CONCEPTUAL AND SUBJECT TO REVISION WITHIN THE STUDY AREAS FOLLOWING FURTHER FIELD INVESTIGATION, UTILITY COORDINATION, AND DESIGN.
 - ALL ALIGNMENTS ARE SUBJECT TO CONSIDERATION OF CONCURRENT PROJECTS BY OTHER STAKEHOLDERS.
 - THE VERTICAL PROFILE IS SUBJECT TO CHANGE BASED ON DETAILED ENGINEERING INVESTIGATIONS AND ENGINEERING ANALYSIS. DEPTH OF SEWER INVERTS AND SHAFTS MAY BE ADJUSTED TO SUIT HYDRAULIC IMPROVEMENTS, CLEARANCES BELOW WATER BODIES, EXISTING INFRASTRUCTURE, AND GEOTECHNICAL AND HYDROGEOLOGICAL CONDITIONS.
 - POTENTIAL COMPOUND AREAS ARE IDENTIFIED ON THE DRAWINGS AND ARE SUBJECT TO CHANGE IN SIZE, SHAPE, LOCATION AND QUANTITY IN ORDER TO SUPPORT CONSTRUCTION ACTIVITIES.
 - WHERE CONCEPT DESIGN LOCATIONS ARE LOCATED WITHIN CONSERVATION AUTHORITY REGULATED AREAS, FURTHER INVESTIGATION WILL BE UNDERTAKEN TO DETERMINE AND MINIMIZE IMPACTS. IF CONSTRUCTION WITHIN A FLOODPLAIN AREA CANNOT BE AVOIDED THEN THE LOCATIONS WHERE FLOODPLAIN STORAGE OR COMPENSATION COULD BE ACCOMMODATED WILL BE IDENTIFIED DURING DESIGN.
 - REGION OF YORK ORTHOPHOTOGRAPHY PROVIDED BY ArcGIS

84405-GHD-XX-14-DRG-CI-D006.dwg

THE LOCATION OF UTILITIES IS APPROXIMATE ONLY, AND THE EXACT LOCATION SHOULD BE DETERMINED BY CONSULTING THE MUNICIPAL AUTHORITIES AND UTILITY COMPANIES CONCERNED.



GHD Ltd.
455 Phillip Street
Waterloo, Ontario N2L 3X2 Canada
T 1 519 884 0510 F 1 519 884 0525
Conditions of Use
This document and the ideas and designs incorporated herein, as an instrument of professional service, is the property of GHD. This document may only be used by GHD's client (and any other person who GHD has agreed can use this document) for the purpose for which it was prepared and must not be used by any other person or for any other purpose.

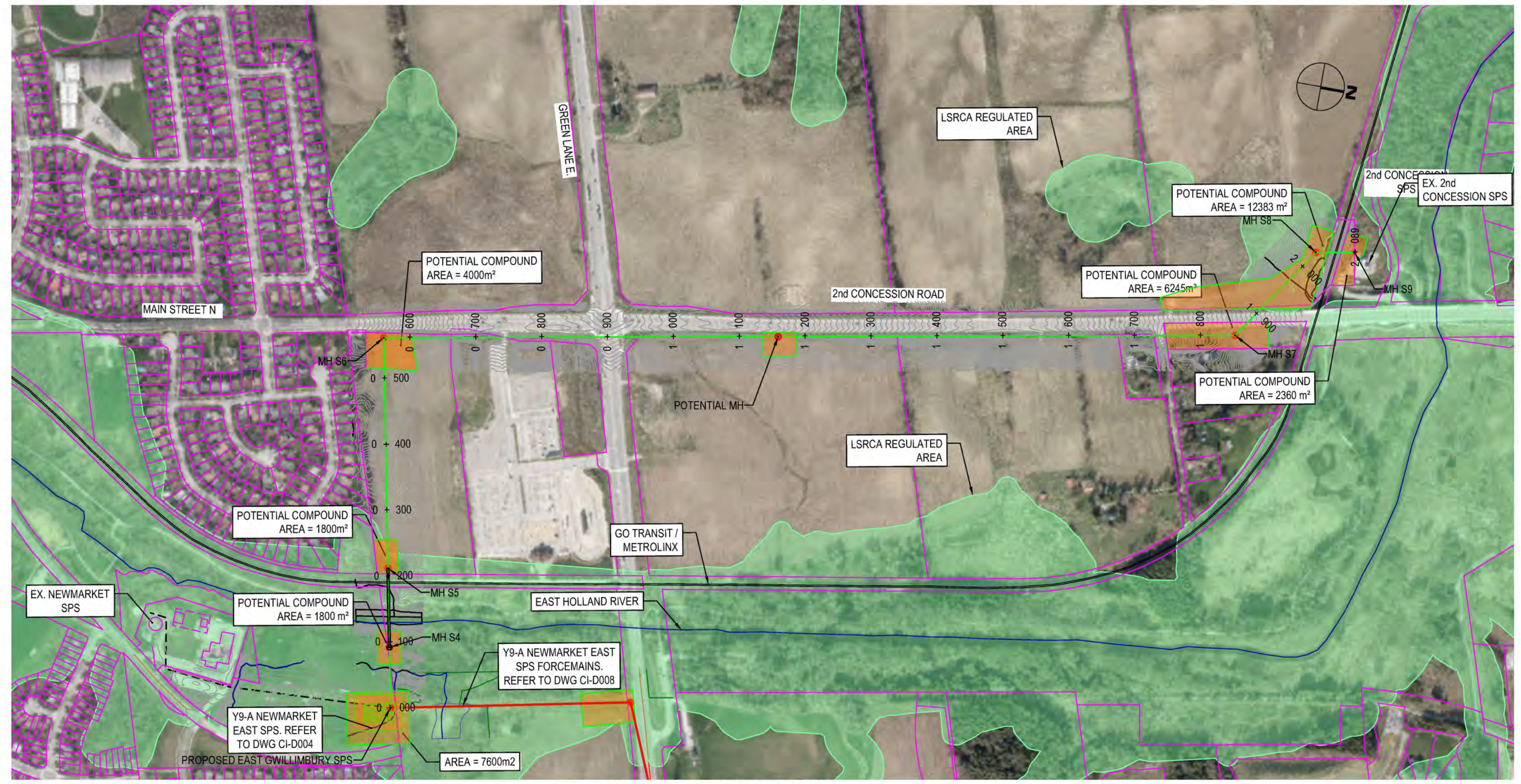
No.	DATE	REVISIONS	BY
1	2023-09-29	ISSUED FOR YRSW PROJECT REPORT	T.C.



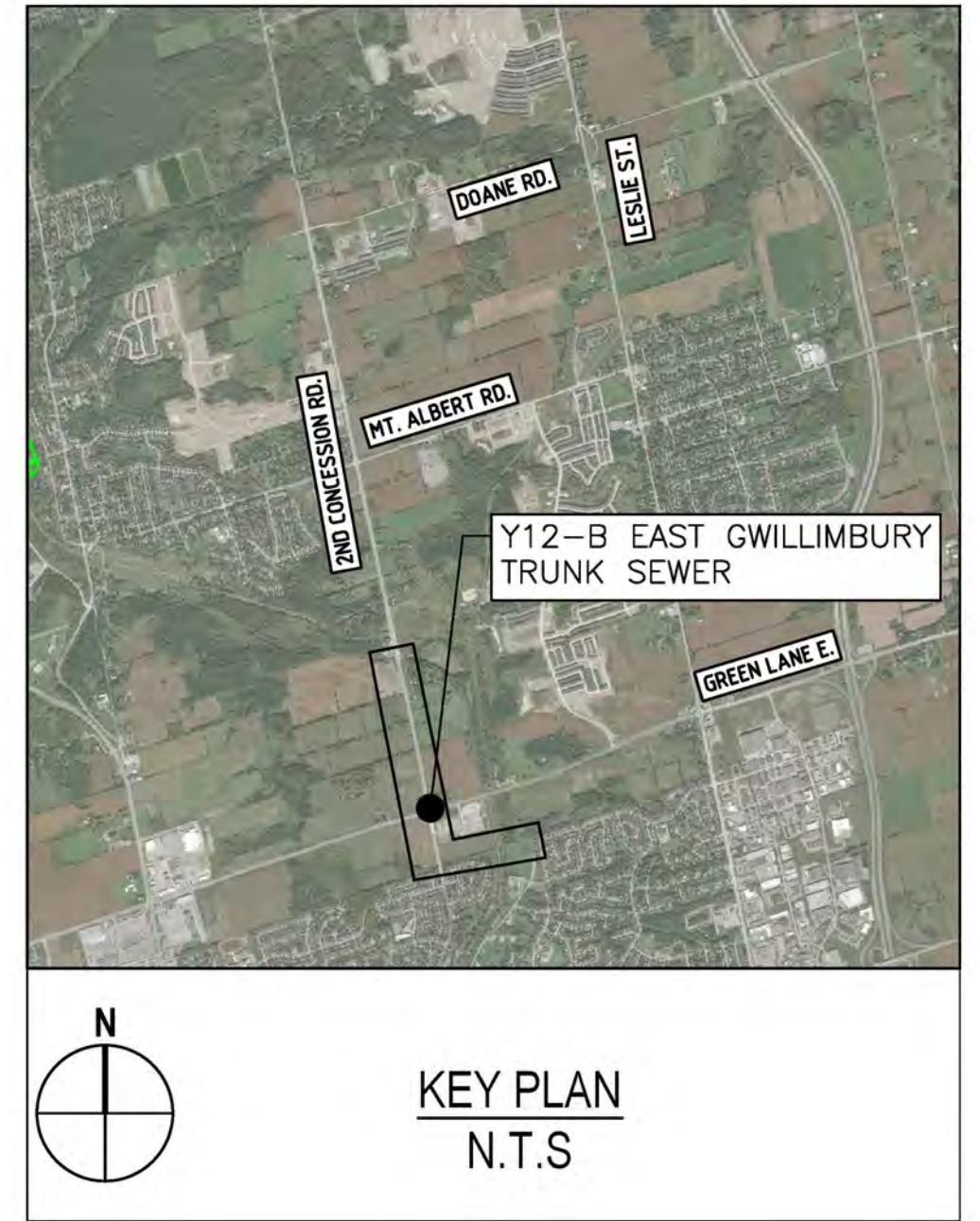
DATE	APR. 2023
DESIGN	
DRAWN	E.Lee
CHECKED	E.Lee

YORK REGION SEWAGE WORKS
NORTH YDSS EXPANSION
SYSTEM UPGRADES CONCEPTUAL DESIGN
Y12-A 2ND CONCESSION
NORTH GRAVITY SEWER
PLAN & PROFILE
STA. 0+000 TO 2+948

SCALE	1:5000
DWG. NO.	CI-D006
CONT. NO.	0
SHEET NO.	6

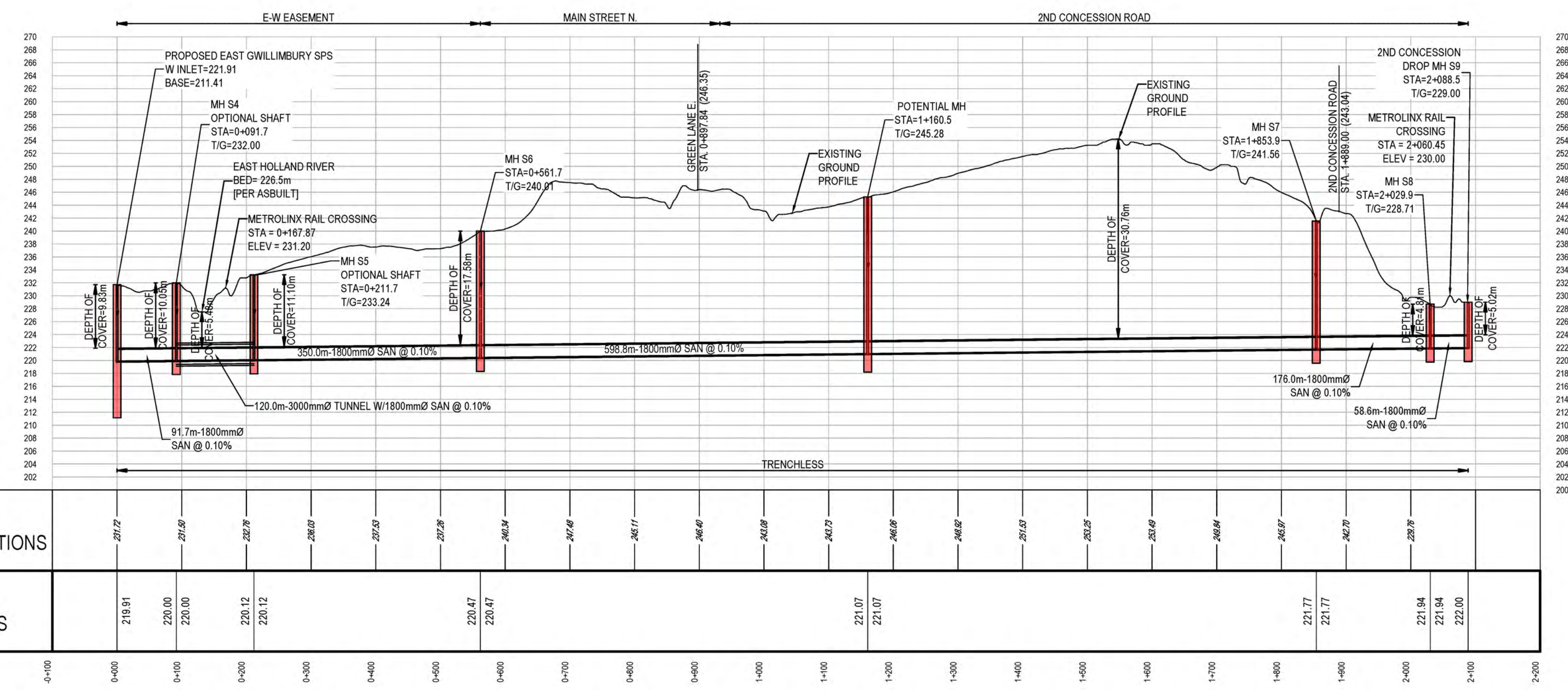


2nd CONCESSION ROAD



KEY PLAN
N.T.S

LEGEND	
SYMBOLS	DESCRIPTION
	PROTECTED COUNTRY SIDE
	LSRCA / TRCA REGULATORY LIMIT
	SHAFT LOCATION
	GRAVITY ALIGNMENT
	FORCEMAIN ALIGNMENT
	LAND PARCELS
	CONSTRUCTION COMPOUND



	0+000	0+100	0+200	0+300	0+400	0+500	0+600	0+700	0+800	0+900	1+000	1+100	1+200	1+300	1+400	1+500	1+600	1+700	1+800	1+900	2+000		
EXISTING GROUND ELEVATIONS	217.72	217.86	217.78	218.00	217.83	217.78	218.04	217.66	216.71	216.60	216.08	216.73	216.05	216.02	215.81	215.25	215.49	216.84	216.97	216.70	216.76	216.94	
INVERT ELEVATIONS	219.91	220.00	220.12	220.12	220.47	220.47	221.07	221.07													221.77	221.77	221.94

- GENERAL NOTES:
- THE HORIZONTAL AND VERTICAL ALIGNMENTS PRESENTED ON THIS SET OF DRAWINGS IS BASED ON A CONCEPTUAL DESIGN CREATED AS A PROOF OF CONCEPT TO CONVEY ANTICIPATED WASTEWATER FLOWS AS OUTLINED IN THE PROJECT REPORT. THE FINAL LOCATIONS AND ELEVATIONS OF PUMP STATIONS, GRAVITY SEWERS, FORCEMAINS, AND OTHER SUPPORTING INFRASTRUCTURE ARE CONCEPTUAL AND SUBJECT TO REVISION WITHIN THE STUDY AREAS FOLLOWING FURTHER FIELD INVESTIGATION, UTILITY COORDINATION, AND DESIGN.
 - ALL ALIGNMENTS ARE SUBJECT TO CONSIDERATION OF CONCURRENT PROJECTS BY OTHER STAKEHOLDERS.
 - THE VERTICAL PROFILE IS SUBJECT TO CHANGE BASED ON DETAILED ENGINEERING INVESTIGATIONS AND ENGINEERING ANALYSIS. DEPTH OF SEWER INVERTS AND SHAFTS MAY BE ADJUSTED TO SUIT HYDRAULIC IMPROVEMENTS, CLEARANCES BELOW WATER BODIES, EXISTING INFRASTRUCTURE, AND GEOTECHNICAL AND HYDROGEOLOGICAL CONDITIONS.
 - POTENTIAL COMPOUND AREAS ARE IDENTIFIED ON THE DRAWINGS AND ARE SUBJECT TO CHANGE IN SIZE, SHAPE, LOCATION AND QUANTITY IN ORDER TO SUPPORT CONSTRUCTION ACTIVITIES.
 - WHERE CONCEPT DESIGN LOCATIONS ARE LOCATED WITHIN CONSERVATION AUTHORITY REGULATED AREAS, FURTHER INVESTIGATION WILL BE UNDERTAKEN TO DETERMINE AND MINIMIZE IMPACTS. IF CONSTRUCTION WITHIN A FLOODPLAIN AREA CANNOT BE AVOIDED THEN THE LOCATIONS WHERE FLOODPLAIN STORAGE OR COMPENSATION COULD BE ACCOMMODATED WILL BE IDENTIFIED DURING DESIGN.
 - REGION OF YORK ORTHOPHOTOGRAPHY PROVIDED BY ArcGIS

84405-GHD-XX-XX-DRG-CI-D007.dwg

THE LOCATION OF UTILITIES IS APPROXIMATE ONLY, AND THE EXACT LOCATION SHOULD BE DETERMINED BY CONSULTING THE MUNICIPAL AUTHORITIES AND UTILITY COMPANIES CONCERNED.

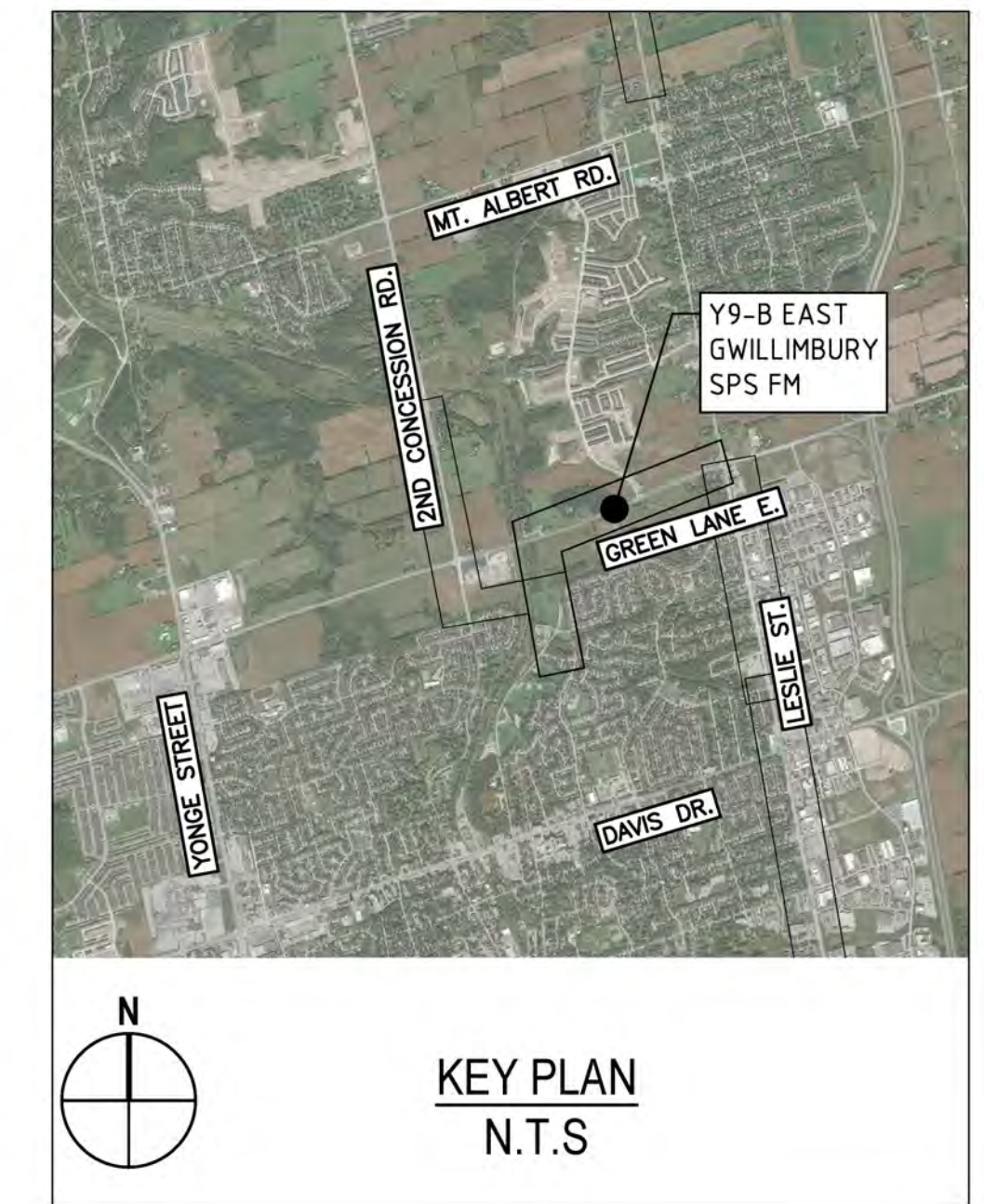
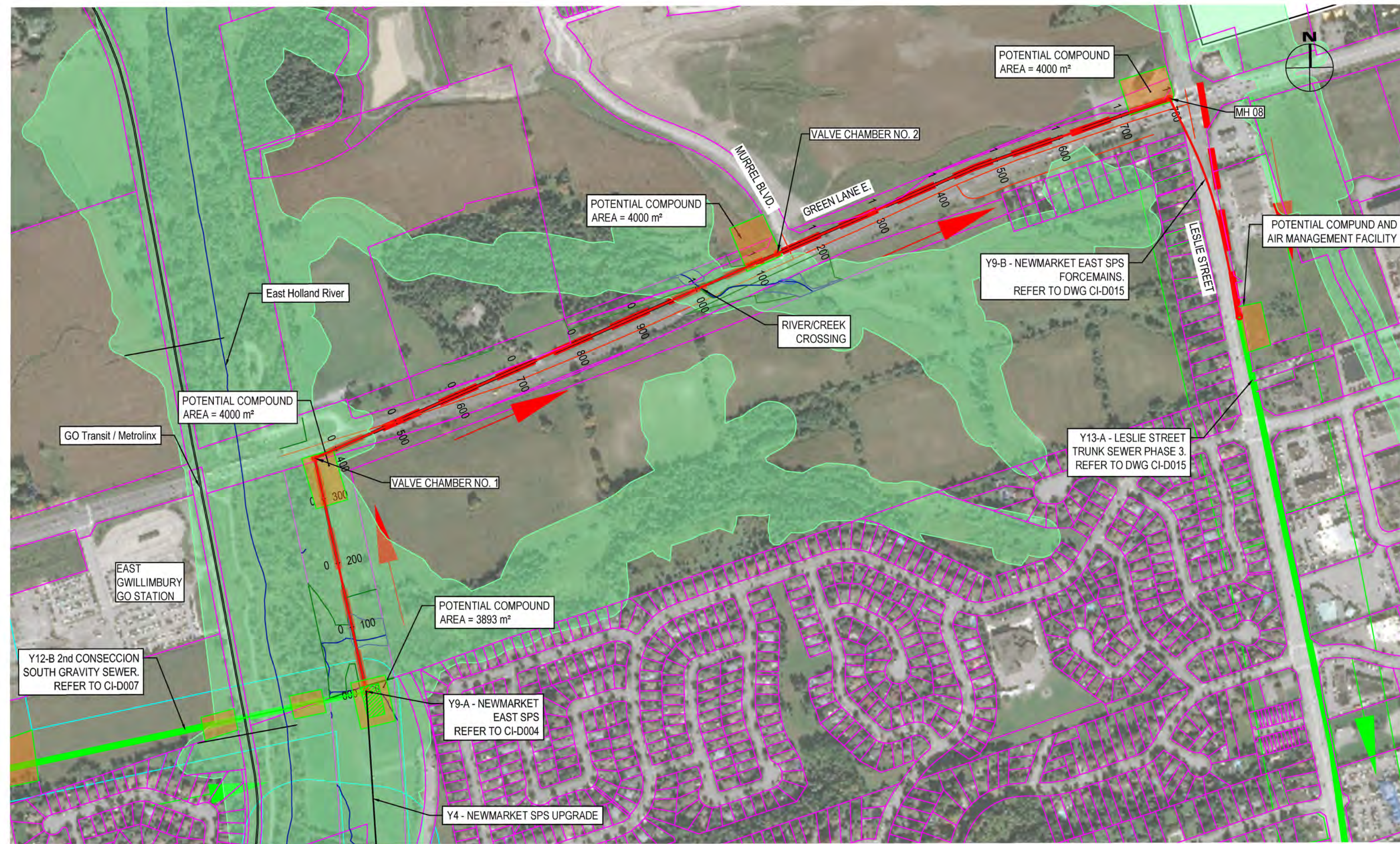


GHD Ltd.
455 Phillip Street
Waterloo, Ontario N2L 3X2 Canada
T 1 519 884 0510 F 1 519 884 0525
Conditions of Use
This document and the ideas and designs incorporated herein, as an instrument of professional service, is the property of GHD. This document may only be used by GHD's client (and any other person who GHD has agreed can use this document) for the purpose for which it was prepared and must not be used by any other person or for any other purpose.

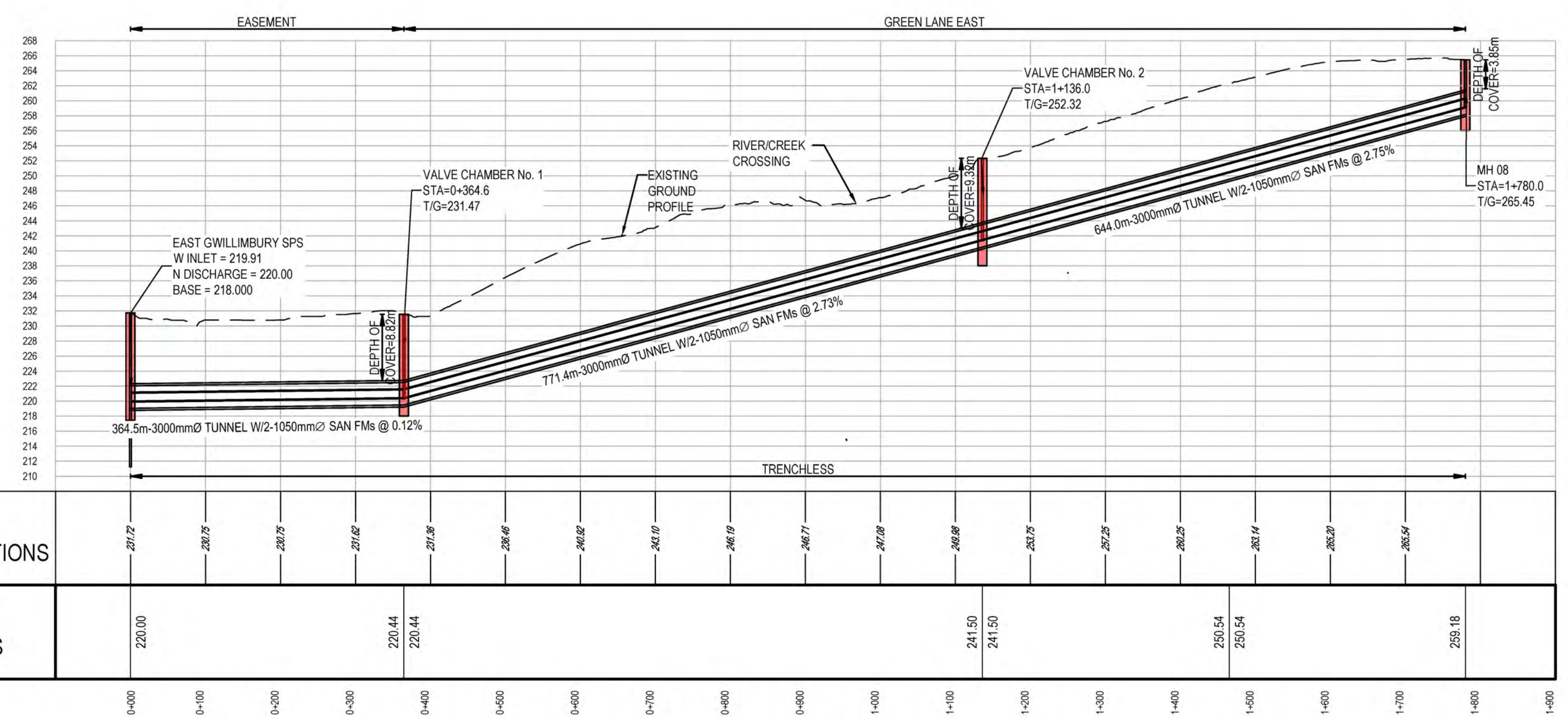
No.	DATE	REVISIONS	BY
1	2023-09-29	ISSUED FOR YRSW PROJECT REPORT	T.C.



DATE APR. 2023	YORK REGION SEWAGE WORKS NORTH YDSS EXPANSION SYSTEM UPGRADES CONCEPTUAL DESIGN Y12-B 2ND CONCESSION SOUTH GRAVITY SEWER PLAN AND PROFILE STA. 0+000 TO 2+089	SCALE 1:1500
DESIGN		DWG. NO. CI-D007
DRAWN E.Lee		CONT. NO. 0
CHECKED G.Procunier		SHEET NO. 7



LEGEND	
SYMBOLS	DESCRIPTION
	PROTECTED COUNTRY SIDE
	LSRCA / TRCA REGULATORY LIMIT
	SHAFT LOCATION
	GRAVITY ALIGNMENT
	FORCEMAIN ALIGNMENT
	LAND PARCELS
	CONSTRUCTION COMPOUND



EXISTING GROUND ELEVATIONS	INVERT ELEVATIONS
271.72	220.00
268.75	
268.75	
271.62	220.44
261.16	220.44
266.46	
266.82	
262.10	
266.19	
266.71	
267.18	
266.86	241.50
263.75	241.50
267.25	
266.25	250.54
263.44	250.54
266.87	
266.54	
259.18	259.18

- GENERAL NOTES:
- THE HORIZONTAL AND VERTICAL ALIGNMENTS PRESENTED ON THIS SET OF DRAWINGS IS BASED ON A CONCEPTUAL DESIGN CREATED AS A PROOF OF CONCEPT TO CONVEY ANTICIPATED WASTEWATER FLOWS AS OUTLINED IN THE PROJECT REPORT. THE FINAL LOCATIONS AND ELEVATIONS OF PUMP STATIONS, GRAVITY SEWERS, FORCEMAINS, AND OTHER SUPPORTING INFRASTRUCTURE ARE CONCEPTUAL AND SUBJECT TO REVISION WITHIN THE STUDY AREAS FOLLOWING FURTHER FIELD INVESTIGATION, UTILITY COORDINATION, AND DESIGN.
 - ALL ALIGNMENTS ARE SUBJECT TO CONSIDERATION OF CONCURRENT PROJECTS BY OTHER STAKEHOLDERS.
 - THE VERTICAL PROFILE IS SUBJECT TO CHANGE BASED ON DETAILED ENGINEERING INVESTIGATIONS AND ENGINEERING ANALYSIS. DEPTH OF SEWER INVERTS AND SHAFTS MAY BE ADJUSTED TO SUIT HYDRAULIC IMPROVEMENTS, CLEARANCES BELOW WATER BODIES, EXISTING INFRASTRUCTURE, AND GEOTECHNICAL AND HYDROGEOLOGICAL CONDITIONS.
 - POTENTIAL COMPOUND AREAS ARE IDENTIFIED ON THE DRAWINGS AND ARE SUBJECT TO CHANGE IN SIZE, SHAPE, LOCATION AND QUANTITY IN ORDER TO SUPPORT CONSTRUCTION ACTIVITIES.
 - WHERE CONCEPT DESIGN LOCATIONS ARE LOCATED WITHIN CONSERVATION AUTHORITY REGULATED AREAS, FURTHER INVESTIGATION WILL BE UNDERTAKEN TO DETERMINE AND MINIMIZE IMPACTS. IF CONSTRUCTION WITHIN A FLOODPLAIN AREA CANNOT BE AVOIDED THEN THE LOCATIONS WHERE FLOODPLAIN STORAGE OR COMPENSATION COULD BE ACCOMMODATED WILL BE IDENTIFIED DURING DESIGN.
 - REGION OF YORK ORTHOPHOTOGRAPHY PROVIDED BY ArcGIS

84405-GHD-XX-10-DRG-CI-D008.dwg

THE LOCATION OF UTILITIES IS APPROXIMATE ONLY, AND THE EXACT LOCATION SHOULD BE DETERMINED BY CONSULTING THE MUNICIPAL AUTHORITIES AND UTILITY COMPANIES CONCERNED.

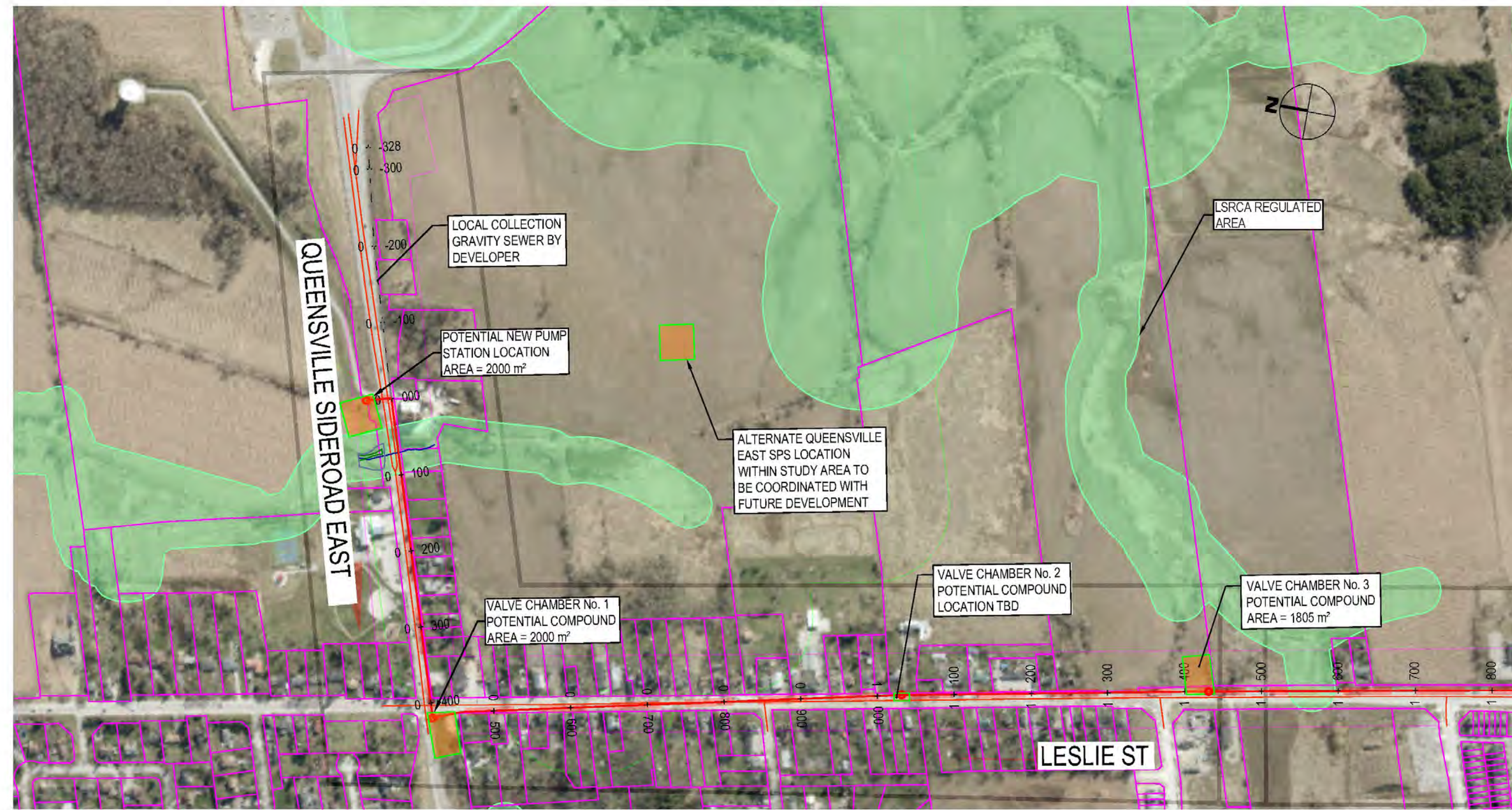


GHD Ltd.
455 Phillip Street
Waterloo, Ontario N2L 3X2 Canada
T 1 519 884 0510 F 1 519 884 0525
Conditions of Use
This document and the ideas and designs incorporated herein, as an instrument of professional services, is the property of GHD. This document may only be used by GHD's client (and any other person who GHD has agreed can use this document) for the purpose for which it was prepared and must not be used by any other person or for any other purpose.

No.	DATE	REVISIONS	BY
1	2023-09-29	ISSUED FOR YRSW PROJECT REPORT	T.C.



DATE JUL 2023	YORK REGION SEWAGE WORKS NORTH YDSS EXPANSION	SCALE 1:5000
DESIGN R.V.	Y9-B NEWMARKET EAST SPS FORCEMAIN PLAN & PROFILE	DWG. NO. CI-D008
DRAWN E.Lee	STA. 0+000 TO 2+186	CONT. NO. 0
CHECKED G.Procunier		SHEET NO. 8

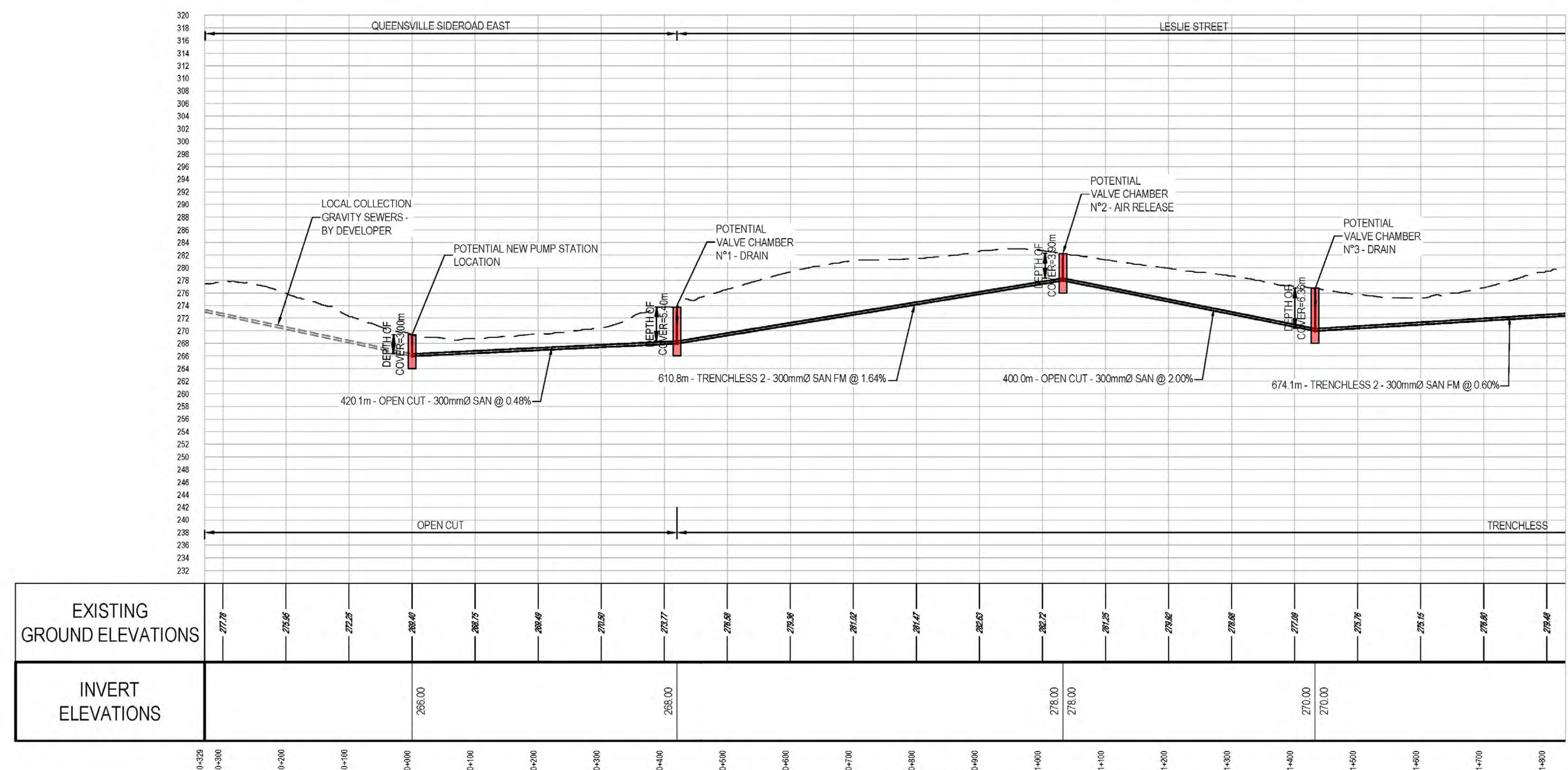


MATCH LINE
STATION 1+800 TO SHARON TRUNK



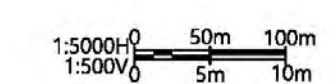
LESLIE STREET

LEGEND	
SYMBOLS	DESCRIPTION
	PROTECTED COUNTRY SIDE
	LSRCA / TRCA REGULATORY LIMIT
	SHAFT LOCATION
	GRAVITY ALIGNMENT
	FORCEMAIN ALIGNMENT
	LAND PARCELS
	CONSTRUCTION COMPOUND



GENERAL NOTES:

- THE HORIZONTAL AND VERTICAL ALIGNMENTS PRESENTED ON THIS SET OF DRAWINGS IS BASED ON A CONCEPTUAL DESIGN CREATED AS A PROOF OF CONCEPT TO CONVEY ANTICIPATED WASTEWATER FLOWS AS OUTLINED IN THE PROJECT REPORT. THE FINAL LOCATIONS AND ELEVATIONS OF PUMP STATIONS, GRAVITY SEWERS, FORCEMAINS, AND OTHER SUPPORTING INFRASTRUCTURE ARE CONCEPTUAL AND SUBJECT TO REVISION WITHIN THE STUDY AREAS FOLLOWING FURTHER FIELD INVESTIGATION, UTILITY COORDINATION, AND DESIGN.
- ALL ALIGNMENTS ARE SUBJECT TO CONSIDERATION OF CONCURRENT PROJECTS BY OTHER STAKEHOLDERS.
- THE VERTICAL PROFILE IS SUBJECT TO CHANGE BASED ON DETAILED ENGINEERING INVESTIGATIONS AND ENGINEERING ANALYSIS. DEPTH OF SEWER INVERTS AND SHAFTS MAY BE ADJUSTED TO SUIT HYDRAULIC IMPROVEMENTS, CLEARANCES BELOW WATER BODIES, EXISTING INFRASTRUCTURE, AND GEOTECHNICAL AND HYDROGEOLOGICAL CONDITIONS.
- POTENTIAL COMPOUND AREAS ARE IDENTIFIED ON THE DRAWINGS AND ARE SUBJECT TO CHANGE IN SIZE, SHAPE, LOCATION AND QUANTITY IN ORDER TO SUPPORT CONSTRUCTION ACTIVITIES.
- WHERE CONCEPT DESIGN LOCATIONS ARE LOCATED WITHIN CONSERVATION AUTHORITY REGULATED AREAS, FURTHER INVESTIGATION WILL BE UNDERTAKEN TO DETERMINE AND MINIMIZE IMPACTS. IF CONSTRUCTION WITHIN A FLOODPLAIN AREA CANNOT BE AVOIDED THEN THE LOCATIONS WHERE FLOODPLAIN STORAGE OR COMPENSATION SHOULD BE ACCOMMODATED WILL BE IDENTIFIED DURING DESIGN.
- REGION OF YORK ORTHOPHOTOGRAPHY PROVIDED BY ArcGIS



THE LOCATION OF UTILITIES IS APPROXIMATE ONLY, AND THE EXACT LOCATION SHOULD BE DETERMINED BY CONSULTING THE MUNICIPAL AUTHORITIES AND UTILITY COMPANIES CONCERNED.

B:4405-GHD-XX-13-DRG-CI-D009.dwg



GHD Ltd.
455 Phillip Street
Waterloo, Ontario N2L 3X2 Canada
T 1 519 884 0510 F 1 519 884 0525
Conditions of Use

This document and the ideas and designs incorporated herein, as an instrument of professional service is the property of GHD. This document may only be used by GHD's client (and any other person who GHD has agreed can use this document) for the purpose for which it was prepared and must not be used by any other person or for any other purpose.

No.	DATE	REVISIONS	BY
1	2023-09-29	ISSUED FOR YRSW PROJECT REPORT	T.C.



DATE	APR. 2023
DESIGN	
DRAWN	E.Lee
CHECKED	G.Procunier

YORK REGION SEWAGE WORKS
NORTH YDSS EXPANSION
SYSTEM UPGRADES CONCEPTUAL DESIGN
**Y11-B QUEENSVILLE EAST SPS
FORCEMAIN PLAN & PROFILE
STA. 0+000 TO 1+800**

SCALE	1:5000
DWG. NO.	CI-D009
CONT. NO.	
SHEET NO.	9

MATCH LINE
STATION 1+800 FROM QUEENSVILLE

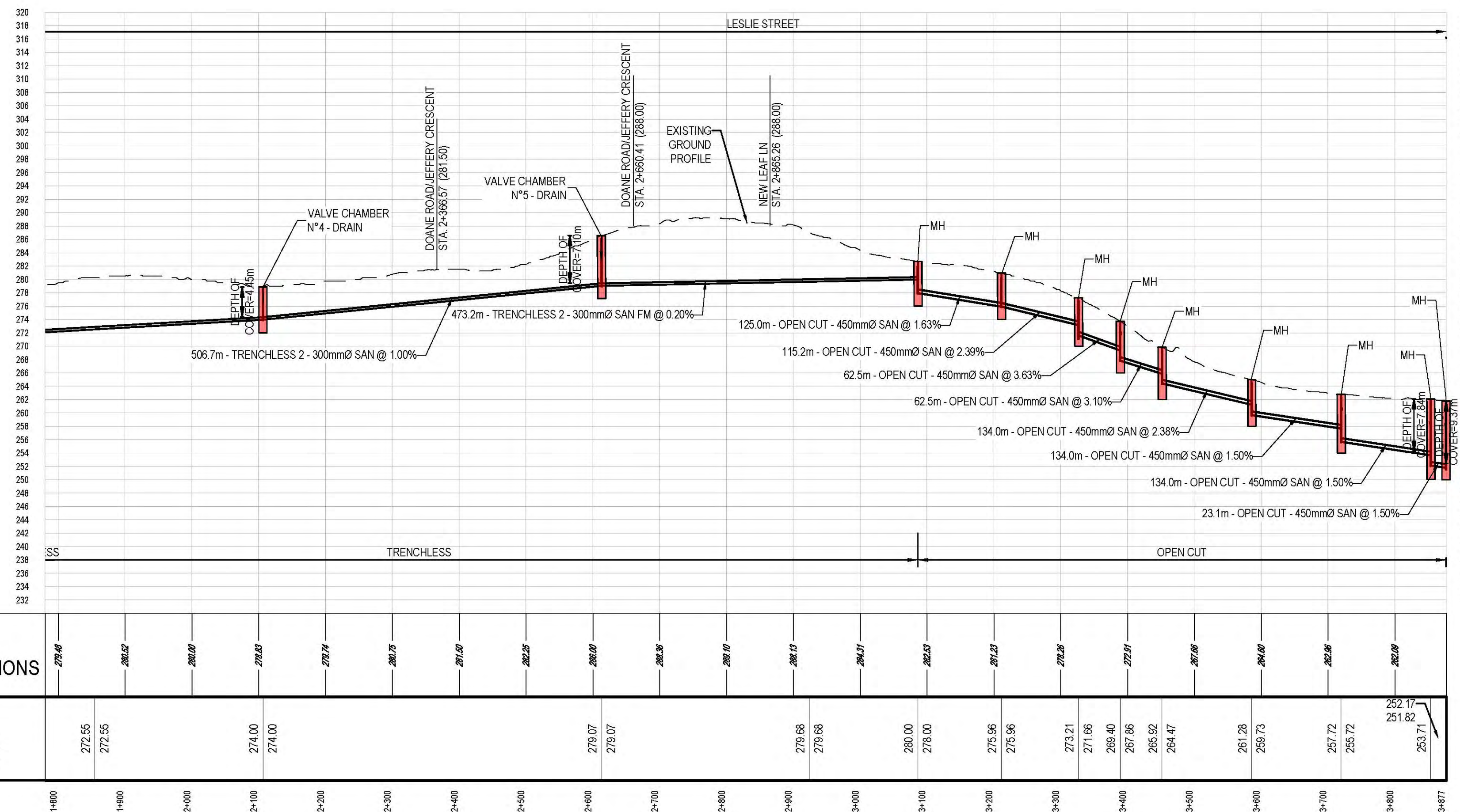


LESLIE STREET



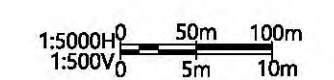
KEY PLAN
N.T.S

LEGEND	
SYMBOLS	DESCRIPTION
	PROTECTED COUNTRY SIDE
	LSRCA / TRCA REGULATORY LIMIT
	SHAFT LOCATION
	GRAVITY ALIGNMENT
	FORCEMAIN ALIGNMENT
	LAND PARCELS
	CONSTRUCTION COMPOUND



GENERAL NOTES:

- THE HORIZONTAL AND VERTICAL ALIGNMENTS PRESENTED ON THIS SET OF DRAWINGS IS BASED ON A CONCEPTUAL DESIGN CREATED AS A PROOF OF CONCEPT TO CONVEY ANTICIPATED WASTEWATER FLOWS AS OUTLINED IN THE PROJECT REPORT. THE FINAL LOCATIONS AND ELEVATIONS OF PUMP STATIONS, GRAVITY SEWERS, FORCEMAINS, AND OTHER SUPPORTING INFRASTRUCTURE ARE CONCEPTUAL AND SUBJECT TO REVISION WITHIN THE STUDY AREAS FOLLOWING FURTHER FIELD INVESTIGATION, UTILITY COORDINATION, AND DESIGN.
- ALL ALIGNMENTS ARE SUBJECT TO CONSIDERATION OF CONCURRENT PROJECTS BY OTHER STAKEHOLDERS.
- THE VERTICAL PROFILE IS SUBJECT TO CHANGE BASED ON DETAILED ENGINEERING INVESTIGATIONS AND ENGINEERING ANALYSIS. DEPTH OF SEWER INVERTS AND SHAFTS MAY BE ADJUSTED TO SUIT HYDRAULIC IMPROVEMENTS, CLEARANCES BELOW WATER BODIES, EXISTING INFRASTRUCTURE, AND GEOTECHNICAL AND HYDROGEOLOGICAL CONDITIONS.
- POTENTIAL COMPOUND AREAS ARE IDENTIFIED ON THE DRAWINGS AND ARE SUBJECT TO CHANGE IN SIZE, SHAPE, LOCATION AND QUANTITY IN ORDER TO SUPPORT CONSTRUCTION ACTIVITIES.
- WHERE CONCEPT DESIGN LOCATIONS ARE LOCATED WITHIN CONSERVATION AUTHORITY REGULATED AREAS, FURTHER INVESTIGATION WILL BE UNDERTAKEN TO DETERMINE AND MINIMIZE IMPACTS. IF CONSTRUCTION WITHIN A FLOODPLAIN AREA CANNOT BE AVOIDED THEN THE LOCATIONS WHERE FLOODPLAIN STORAGE OR COMPENSATION COULD BE ACCOMMODATED WILL BE IDENTIFIED DURING DESIGN.
- REGION OF YORK ORTHOPHOTOGRAPHY PROVIDED BY ArcGIS



THE LOCATION OF UTILITIES IS APPROXIMATE ONLY, AND THE EXACT LOCATION SHOULD BE DETERMINED BY CONSULTING THE MUNICIPAL AUTHORITIES AND UTILITY COMPANIES CONCERNED.



GHD Ltd.
455 Phillip Street
Waterloo, Ontario N2L 3X2 Canada
T 1 519 884 0510 F 1 519 884 0525
Conditions of Use
This document and the ideas and designs incorporated herein, as an instrument of professional service, is the property of GHD. This document may only be used by GHD's client (and any other person who GHD has agreed can use this document) for the purpose for which it was prepared and must not be used by any other person or for any other purpose.

No.	DATE	REVISIONS	BY
1	2023-09-29	ISSUED FOR YRSW PROJECT REPORT	T.C.



DATE	DESIGN	DRAWN	CHECKED	YORK REGION SEWAGE WORKS NORTH YDSS EXPANSION SYSTEM UPGRADES SERVICES COLLECTION	SCALE
APR. 2023				Y11-B QUEENSVILLE EAST SPS FORCEMAIN PLAN & PROFILE STA. 1+800 TO 3+877	1:5000
					DWG. NO. CI-D010
					CONT. NO.
					SHEET NO. 10