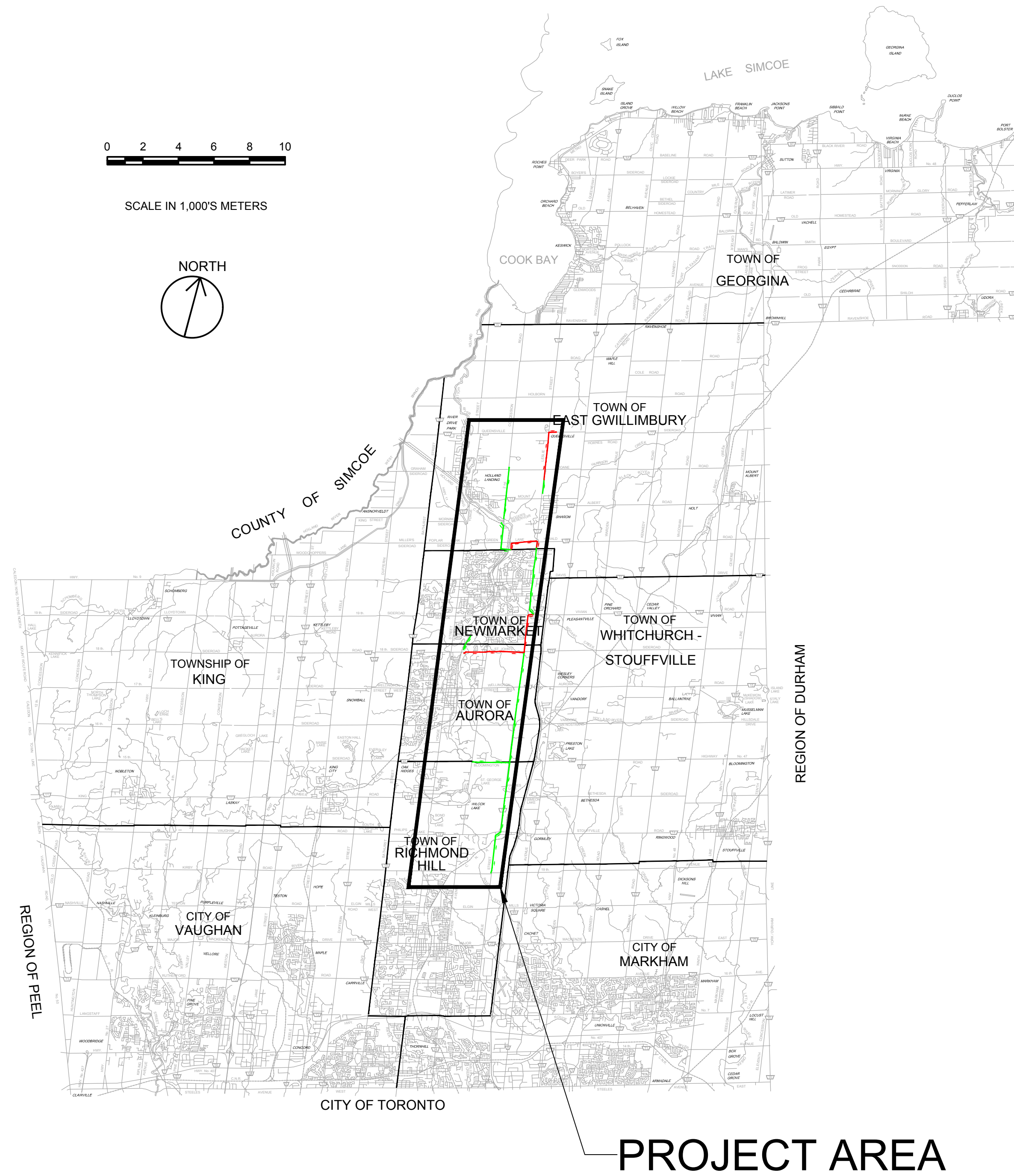




Public Works - Environmental Services

YORK REGION SEWAGE WORKS - PROJECT REPORT NORTH YDSS EXPANSION THE REGIONAL MUNICIPALITY OF YORK



File Location: D:\ACAD\Proj\WorkDir\Projects\84058405-GHD-XX-DRG-CI-0001.dwg Last Saved: October 18, 2023, by s4642 Project: October 18, 2023

W. EMMERSON
REGIONAL CHAIR

E. MAHONEY
COMMISSIONER OF PUBLIC WORKS

OCTOBER 2023



DRAWING INDEX

GENERAL	DWG. No.	DRAWING DESCRIPTION
01	CI-D001	COVER SHEET
02	CI-D002	DRAWING LIST AND GENERAL NOTES
03	CI-D003	SITE PLAN

CIVIL

SHEET NO.	DRAWING NUMBER	DRAWING DESCRIPTION
04	CI-D004	Y9-A NEW MARKET EAST SPS - SITE PLAN
05	CI-D005	Y12-A 2ND CONCESSION NORTH GRAVITY SEWER
06	CI-D006	Y12-A 2ND CONCESSION NORTH GRAVITY SEWER STA. 0+000 TO 3+943
07	CI-D007	Y12-B 2ND CONCESSION SOUTH GRAVITY SEWER PLAN & PROFILE STA. 0+000 TO 2+089
08	CI-D008	Y9-B NEWMARKET EAST SPS FORCEMAIN STA. 0+000 TO 2+186
09	CI-D009	Y11-B QUEENSVILLE EAST SPS FORCEMAIN PLAN & PROFILE STA. 0+000 TO 1+800
10	CI-D010	Y11-B QUEENSVILLE EAST SPS FORCEMAIN PLAN & PROFILE STA. 1+800 TO 3+877
11	CI-D011	Y3-B AURORA EAST SPS - SITE PLAN
12	CI-D012	Y13-B MULOCK SPS - SITE PLAN
13	CI-D013	Y10 AURORA SPS GRAVITY SWR TWINNING PLAN & PROFILE STA. 0+000 TO 0+879
14	CI-D014	Y13-A LESLIE ST TRNK SWR PHASE 3 PLAN & PROFILE STA. 0+000 TO 2+600
15	CI-D015	Y13-A LESLIE ST TRNK SWR PHASE 3 PLAN & PROFILE STA. 2+600 TO 4+205
16	CI-D016	Y3-C AURORA EAST SPS F/M PLAN & PROFILE STA. 0+000 TO 1+800
17	CI-D017	Y3-C AURORA EAST SPS F/M PLAN & PROFILE STA. 1+800 TO 3+424
18	CI-D018	Y13-C MULOCK SPS F/M PLAN & PROFILE STA. 2+100 TO 4+500
19	CI-D019	Y1-A LESLIE STREET TRUNK SEWER PHASE 1&2 STA. 0+000 TO 3+100
20	CI-D020	Y1-A LESLIE STREET TRUNK SEWER PHASE 1&2 STA. 3+100 TO 6+100
21	CI-D021	Y1-A LESLIE STREET TRUNK SEWER PHASE 1&2 STA. 6+100 TO 9+100
22	CI-D022	Y1-A LESLIE STREET TRUNK SEWER PHASE 1&2 STA. 9+100 TO 12+100
23	CI-D023	Y1-A LESLIE STREET TRUNK SEWER PHASE 1&2 STA. 12+100 TO 14+720
24	CI-D024	Y14 BLOOMINGTON INCPR SWR PLAN & PROFILE STA. 0+000 TO 2+108

84405-GHD-XX-XX-DRG-CI-D002.dwg



GHD Ltd.
455 Phillip Street
Waterloo, Ontario N2L 3X2 Canada
T 1 519 884 0510 F 1 519 884 0525
Conditions of Use

This document and the ideas and designs incorporated herein, as an instrument of professional service, is the property of GHD. This document may only be used by GHD's client (and any other person who GHD has agreed can use this document) for the purpose for which it was prepared and must not be used by any other person or for any other purpose.

No.	DATE	REVISIONS	BY
1	2023-09-29	ISSUED FOR YRSW PROJECT REPORT	T.C.



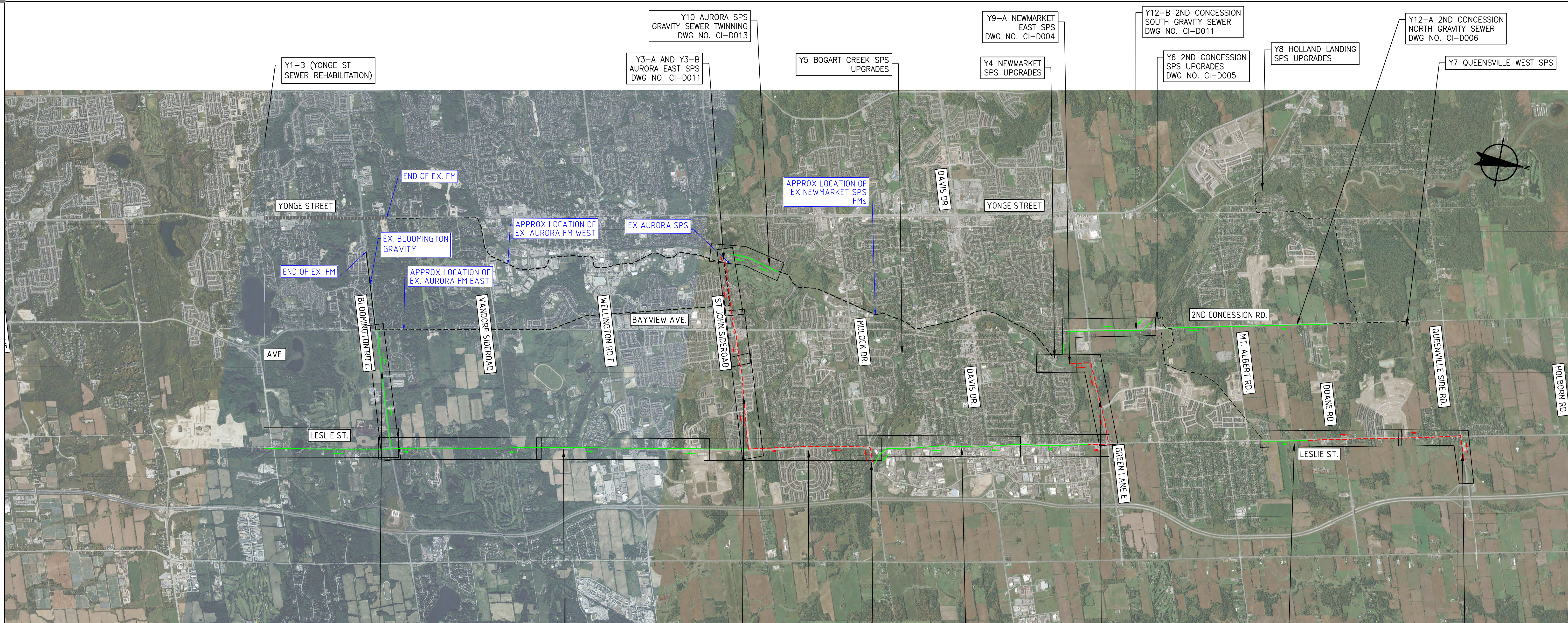
Environmental Services

DATE APR. 2023
DESIGN
DRAWN E.Lee
CHECKED G.Procunier

YORK REGION SEWAGE WORKS PROJECT
NORTH YDSS EXPANSION

**DRAWING LIST AND
GENERAL NOTES**


SCALE
DWG. NO. CI-D002
CONT. NO. 0
SHEET NO. 2



- Y1-B (YONGE ST SEWER REHABILITATION)
- Y1-A1 LESLIE STREET TRUNK SEWER 1 DWG NO. CI-D019 DWG NO. CI-D020 DWG NO. CI-D021
- Y14 - BLOOMINGTON GRAVITY SEWER DWG NO. CI-D024
- Y1-A2 LESLIE STREET TRUNK SEWER 2 DWG NO. CI-D021 DWG NO. CI-D022 DWG NO. CI-D023
- Y10 AURORA SPS GRAVITY SEWER TWINNING DWG NO. CI-D013
- Y3-A AND Y3-B AURORA EAST SPS DWG NO. CI-D011
- Y3-C AURORA B SPS FORCEMAINS DWG NO. CI-D016 DWG NO. CI-D017
- Y13-C MULOCK SPS FM DWG NO. CI-D018
- Y5 BOGART CREEK SPS UPGRADES
- Y9-A NEWMARKET EAST SPS DWG NO. CI-D004
- Y4 NEWMARKET SPS UPGRADES
- Y9-B NEWMARKET EAST SPS FM DWG NO. CI-D008
- Y13-A LESLIE STREET TRUNK SEWER 3 DWG NO. CI-D014 DWG NO. CI-D015
- Y12-B 2ND CONCESSION SOUTH GRAVITY SEWER DWG NO. CI-D011
- Y6 2ND CONCESSION SPS UPGRADES DWG NO. CI-D005
- Y11-B QUEENSVILLE EAST FM DWG NO. CI-D009 DWG NO. CI-D010
- Y8 HOLLAND LANDING SPS UPGRADES
- Y12-A 2ND CONCESSION NORTH GRAVITY SEWER DWG NO. CI-D006
- Y7 QUEENSVILLE WEST SPS
- Y11-A QUEENSVILLE EAST SPS

- GENERAL NOTES:
1. THE HORIZONTAL AND VERTICAL ALIGNMENTS PRESENTED ON THIS SET OF DRAWINGS IS BASED ON A CONCEPTUAL DESIGN CREATED AS A PROOF OF CONCEPT TO CONVEY ANTICIPATED WASTEWATER FLOWS AS OUTLINED IN THE PROJECT REPORT. THE FINAL LOCATIONS AND ELEVATIONS OF PUMP STATIONS, GRAVITY SEWERS, FORCEMAINS, AND OTHER SUPPORTING INFRASTRUCTURE ARE CONCEPTUAL AND SUBJECT TO REVISION WITHIN THE STUDY AREAS FOLLOWING FURTHER FIELD INVESTIGATION, UTILITY COORDINATION, AND DESIGN.
 2. ALL ALIGNMENTS ARE SUBJECT TO CONSIDERATION OF CONCURRENT PROJECTS BY OTHER STAKEHOLDERS.
 3. THE VERTICAL PROFILE IS SUBJECT TO CHANGE BASED ON DETAILED ENGINEERING INVESTIGATIONS AND ENGINEERING ANALYSIS. DEPTH OF SEWER INVERTS AND SHAFTS MAY BE ADJUSTED TO SUIT HYDRAULIC IMPROVEMENTS, CLEARANCES BELOW WATER BODIES, EXISTING INFRASTRUCTURE, AND GEOTECHNICAL AND HYDROGEOLOGICAL CONDITIONS.
 4. POTENTIAL COMPOUND AREAS ARE IDENTIFIED ON THE DRAWINGS AND ARE SUBJECT TO CHANGE IN SIZE, SHAPE, LOCATION AND QUANTITY IN ORDER TO SUPPORT CONSTRUCTION ACTIVITIES.
 5. WHERE CONCEPT DESIGN LOCATIONS ARE LOCATED WITHIN CONSERVATION AUTHORITY REGULATED AREAS, FURTHER INVESTIGATION WILL BE UNDERTAKEN TO DETERMINE AND MINIMIZE IMPACTS. IF CONSTRUCTION WITHIN A FLOODPLAIN AREA CANNOT BE AVOIDED THEN THE LOCATIONS WHERE FLOODPLAIN STORAGE OR COMPENSATION COULD BE ACCOMMODATED WILL BE IDENTIFIED DURING DESIGN.
 6. REGION OF YORK ORTHOPHOTOGRAPHY PROVIDED BY ArcGIS

THE LOCATION OF UTILITIES IS APPROXIMATE ONLY, AND THE EXACT LOCATION SHOULD BE DETERMINED BY CONSULTING THE MUNICIPAL AUTHORITIES AND UTILITY COMPANIES CONCERNED.



GHD Ltd.
455 Philip Street
Waterloo, Ontario N2L 3X2 Canada
T 1 519 884 0510 F 1 519 884 0525
Conditions of Use
This document and the ideas and designs incorporated herein, as an instrument of professional service, is the property of GHD. This document may only be used by GHD's client (and any other person who GHD has agreed can use this document) for the purpose for which it was prepared and must not be used by any other person or for any other purpose.

No.	DATE	REVISIONS	BY
1	2023-09-29	ISSUED FOR YRSW PROJECT REPORT	T.C.



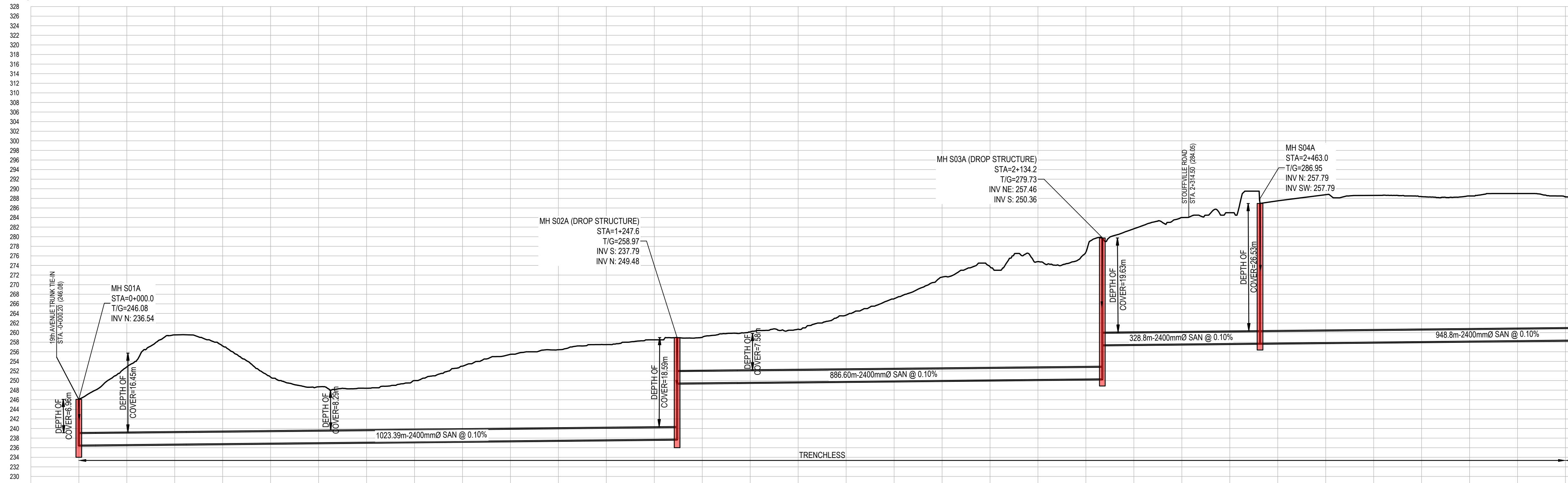
DATE MAY 2023	YORK REGION SEWAGE WORKS NORTH YDSS EXPANSION YDSS NORTH EXPANSION SITE PLAN	SCALE NTS
DESIGN		DWG. NO. CI-D003
DRAWN E.Lee		CONT. NO. 0
CHECKED G.Procunier		SHEET NO. 3

B:4405-GHD-XX-XX-DRG-CI-D003.dwg



KEY PLAN
N.T.S

**LESLIE STREET
Y1-A1 SEGMENT**



STATION	EXISTING GROUND ELEVATIONS	INVERT ELEVATIONS
0+000	246.08	236.54
0+100	252.64	236.58
0+200	256.62	236.76
0+300	257.19	236.76
0+400	256.71	
0+500	248.70	
0+600	248.40	
0+700	249.89	
0+800	253.00	
0+900	255.46	
1+000	256.47	
1+100	257.80	
1+200	258.67	237.79
1+300	259.02	249.48
1+400	258.12	249.50
1+500	259.72	
1+600	260.65	
1+700	267.08	
1+800	271.67	
1+900	272.75	
2+000	274.67	
2+100	278.00	250.36
2+200	291.06	257.46
2+300	294.00	
2+400	285.67	257.79
2+500	287.46	257.79
2+600	288.78	
2+700	288.67	
2+800	288.05	
2+900	288.60	
3+000	289.00	
3+100	288.32	

LEGEND	
SYMBOLS	DESCRIPTION
	PROTECTED COUNTRY SIDE
	LSRCA / TRCA REGULATORY LIMIT
	SHAFT LOCATION
	GRAVITY ALIGNMENT
	FORCEMAIN ALIGNMENT
	LAND PARCELS
	CONSTRUCTION COMPOUND

- GENERAL NOTES:
- THE HORIZONTAL AND VERTICAL ALIGNMENTS PRESENTED ON THIS SET OF DRAWINGS IS BASED ON A CONCEPTUAL DESIGN CREATED AS A PROOF OF CONCEPT TO CONVEY ANTICIPATED WASTEWATER FLOWS AS OUTLINED IN THE PROJECT REPORT. THE FINAL LOCATIONS AND ELEVATIONS OF PUMP STATIONS, GRAVITY SEWERS, FORCEMAINS, AND OTHER SUPPORTING INFRASTRUCTURE ARE CONCEPTUAL AND SUBJECT TO REVISION WITHIN THE STUDY AREAS FOLLOWING FURTHER FIELD INVESTIGATION, UTILITY COORDINATION, AND DESIGN.
 - ALL ALIGNMENTS ARE SUBJECT TO CONSIDERATION OF CONCURRENT PROJECTS BY OTHER STAKEHOLDERS.
 - THE VERTICAL PROFILE IS SUBJECT TO CHANGE BASED ON DETAILED ENGINEERING INVESTIGATIONS AND ENGINEERING ANALYSIS. DEPTH OF SEWER INVERTS AND SHAFTS MAY BE ADJUSTED TO SUIT HYDRAULIC IMPROVEMENTS, CLEARANCES BELOW WATER BODIES, EXISTING INFRASTRUCTURE, AND GEOTECHNICAL AND HYDROGEOLOGICAL CONDITIONS.
 - POTENTIAL COMPOUND AREAS ARE IDENTIFIED ON THE DRAWINGS AND ARE SUBJECT TO CHANGE IN SIZE, SHAPE, LOCATION AND QUANTITY IN ORDER TO SUPPORT CONSTRUCTION ACTIVITIES.
 - WHERE CONCEPT DESIGN LOCATIONS ARE LOCATED WITHIN CONSERVATION AUTHORITY REGULATED AREAS, FURTHER INVESTIGATION WILL BE UNDERTAKEN TO DETERMINE AND MINIMIZE IMPACTS. IF CONSTRUCTION WITHIN A FLOODPLAIN AREA CANNOT BE AVOIDED THEN THE LOCATIONS WHERE FLOODPLAIN STORAGE OR COMPENSATION COULD BE ACCOMMODATED WILL BE IDENTIFIED DURING DESIGN.
 - REGION OF YORK ORTHOPHOTOGRAPHY PROVIDED BY ArcGIS

84405-GHD-XX-XX-DRG-CI-D019.dwg

THE LOCATION OF UTILITIES IS APPROXIMATE ONLY, AND THE EXACT LOCATION SHOULD BE DETERMINED BY CONSULTING THE MUNICIPAL AUTHORITIES AND UTILITY COMPANIES CONCERNED.



GHD Ltd.
455 Phillip Street
Waterloo, Ontario N2L 3X2 Canada
T 1 519 884 0510 F 1 519 884 0525
Conditions of Use
This document and the ideas and designs incorporated herein, as an instrument of professional service, is the property of GHD. This document may only be used by GHD's client (and any other person who GHD has agreed can use this document) for the purpose for which it was prepared and must not be used by any other person or for any other purpose.

No.	DATE	REVISIONS	BY
1	2023-09-29	ISSUED FOR YRSW PROJECT REPORT	T.C.

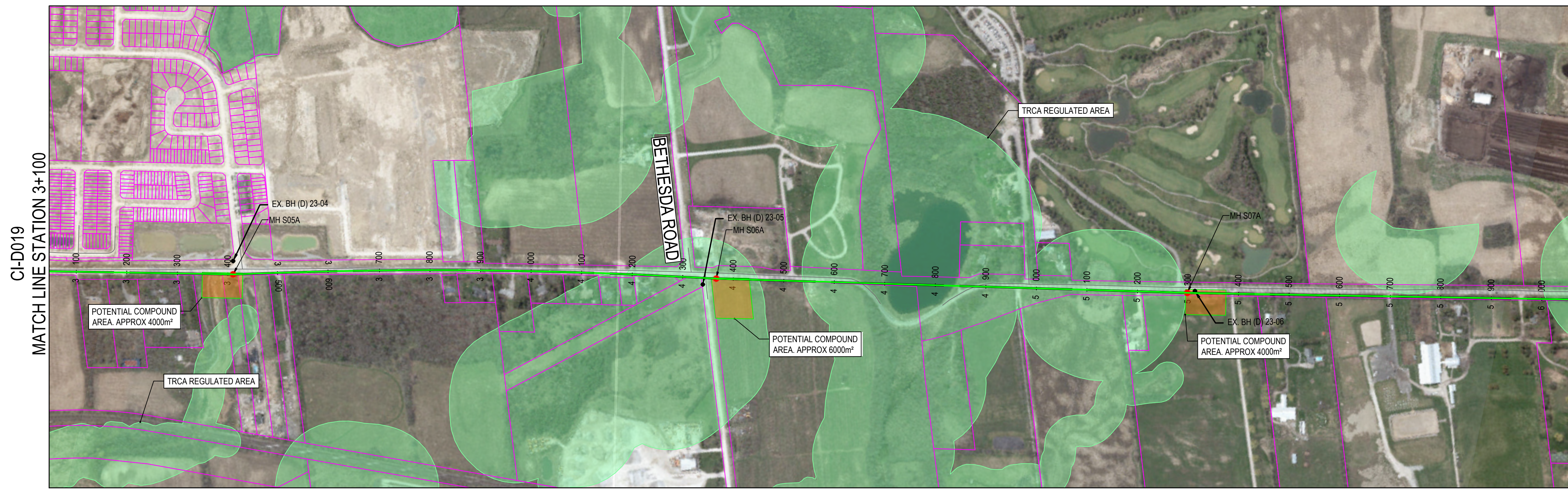


DATE	APR. 2023
DESIGN	
DRAWN	E.Lee
CHECKED	M.Blouin

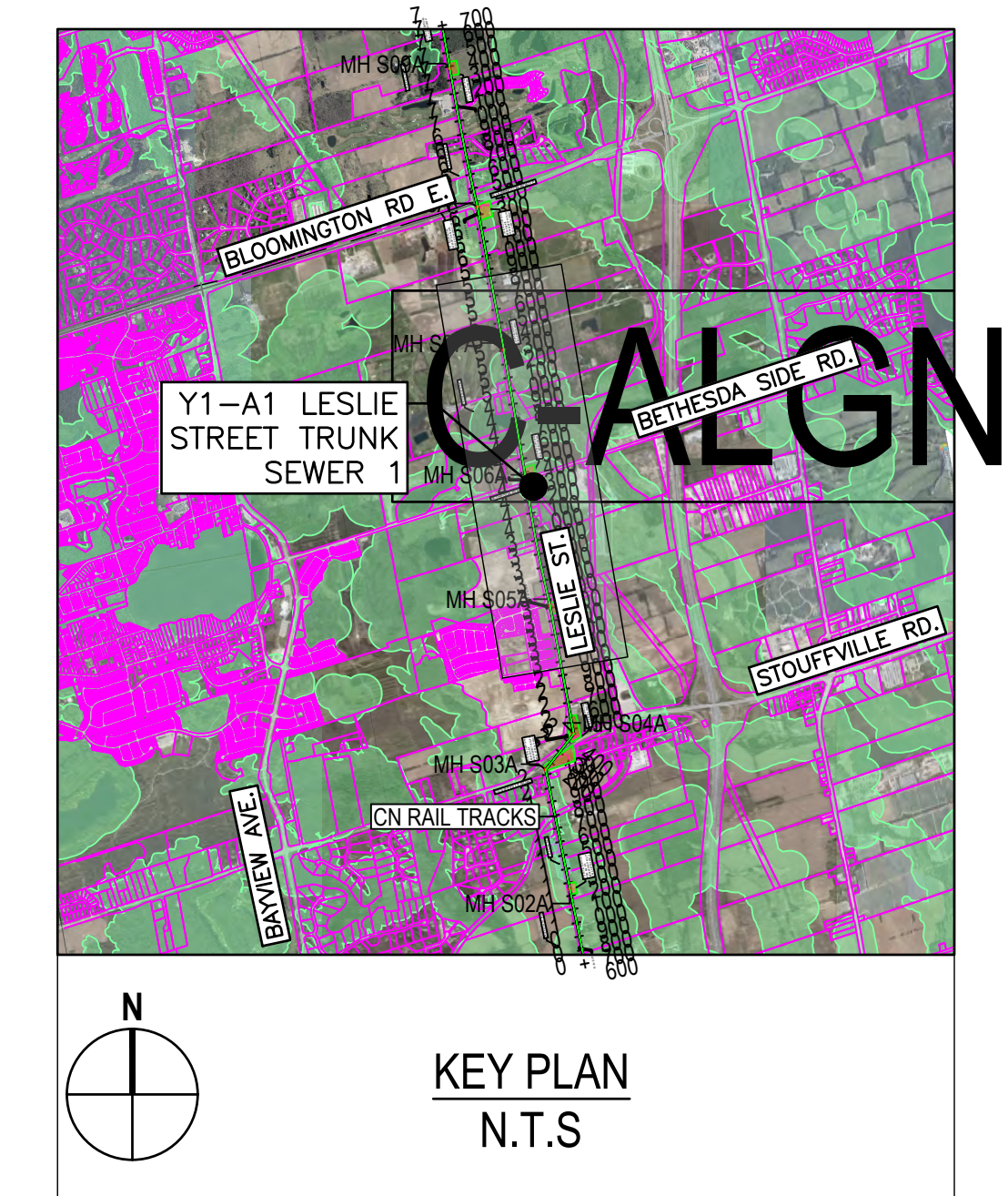
YORK REGION SEWAGE WORKS
NORTH YDSS EXPANSION

**Y1-A LESLIE ST TRUNK SWR
PHASES 1&2 PLAN & PROFILE
STA. 0+000 TO 3+100**

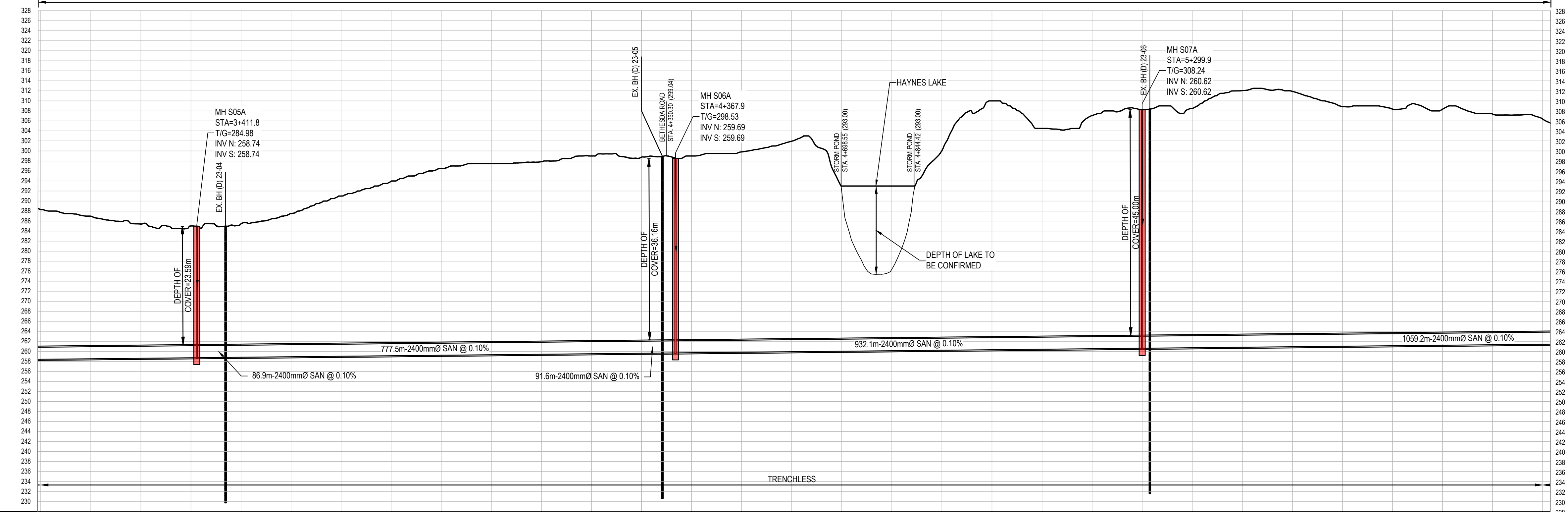
SCALE	1:5000
DWG. NO.	CI-D019
CONT. NO.	0
SHEET NO.	19



MATCH LINE STATION 3+100
 MATCH LINE STATION 6+100
 SEE CH-D021



**LESLIE STREET
 Y1-A1 SEGMENT**

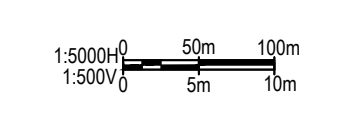


STATION	EXISTING GROUND ELEVATIONS (m)	INVERT ELEVATIONS (m)
3+100	285.2	
3+200	286.9	
3+300	286.4	
3+400	285.0	258.74
3+500	286.6	258.74
3+600	287.5	258.82
3+700	291.0	258.82
3+800	283.9	
3+900	286.5	
4+000	287.5	
4+100	287.5	
4+200	288.0	
4+300	286.7	259.60
4+400	286.0	259.63
4+500	286.2	259.69
4+600	287.8	259.69
4+700	283.0	
4+800	283.0	
4+900	280.2	
5+000	276.0	
5+100	284.5	
5+200	287.0	
5+300	288.2	260.62
5+400	288.7	260.62
5+500	292.5	
5+600	277.9	
5+700	288.4	
5+800	288.9	
5+900	288.2	
6+000	287.5	
6+100	285.7	

LEGEND

SYMBOLS	DESCRIPTION
—	PROTECTED COUNTRY SIDE
—	TRCA REGULATORY LIMIT
●	SHAFT LOCATION
—	GRAVITY ALIGNMENT
—	FORCEMAIN ALIGNMENT
—	LAND PARCELS
—	CONSTRUCTION COMPOUND

- GENERAL NOTES:
- THE HORIZONTAL AND VERTICAL ALIGNMENTS PRESENTED ON THIS SET OF DRAWINGS IS BASED ON A CONCEPTUAL DESIGN CREATED AS A PROOF OF CONCEPT TO CONVEY ANTICIPATED WASTEWATER FLOWS AS OUTLINED IN THE PROJECT REPORT. THE FINAL LOCATIONS AND ELEVATIONS OF PUMP STATIONS, GRAVITY SEWERS, FORCEMAINS, AND OTHER SUPPORTING INFRASTRUCTURE ARE CONCEPTUAL AND SUBJECT TO REVISION WITHIN THE STUDY AREAS FOLLOWING FURTHER FIELD INVESTIGATION, UTILITY COORDINATION, AND DESIGN.
 - ALL ALIGNMENTS ARE SUBJECT TO CONSIDERATION OF CONCURRENT PROJECTS BY OTHER STAKEHOLDERS.
 - THE VERTICAL PROFILE IS SUBJECT TO CHANGE BASED ON DETAILED ENGINEERING INVESTIGATIONS AND ENGINEERING ANALYSIS. DEPTH OF SEWER INVERTS AND SHAFTS MAY BE ADJUSTED TO SUIT HYDRAULIC IMPROVEMENTS, CLEARANCES BELOW WATER BODIES, EXISTING INFRASTRUCTURE, AND GEOTECHNICAL AND HYDROGEOLOGICAL CONDITIONS.
 - POTENTIAL COMPOUND AREAS ARE IDENTIFIED ON THE DRAWINGS AND ARE SUBJECT TO CHANGE IN SIZE, SHAPE, LOCATION AND QUANTITY IN ORDER TO SUPPORT CONSTRUCTION ACTIVITIES.
 - WHERE CONCEPT DESIGN LOCATIONS ARE LOCATED WITHIN CONSERVATION AUTHORITY REGULATED AREAS, FURTHER INVESTIGATION WILL BE UNDERTAKEN TO DETERMINE AND MINIMIZE IMPACTS. IF CONSTRUCTION WITHIN A FLOODPLAIN AREA CANNOT BE AVOIDED THEN THE LOCATIONS WHERE FLOODPLAIN STORAGE OR COMPENSATION COULD BE ACCOMMODATED WILL BE IDENTIFIED DURING DESIGN.
 - REGION OF YORK ORTHOPHOTOGRAPHY PROVIDED BY ArcGIS



84405-GHD-XX-DRG-CI-D020.dwg

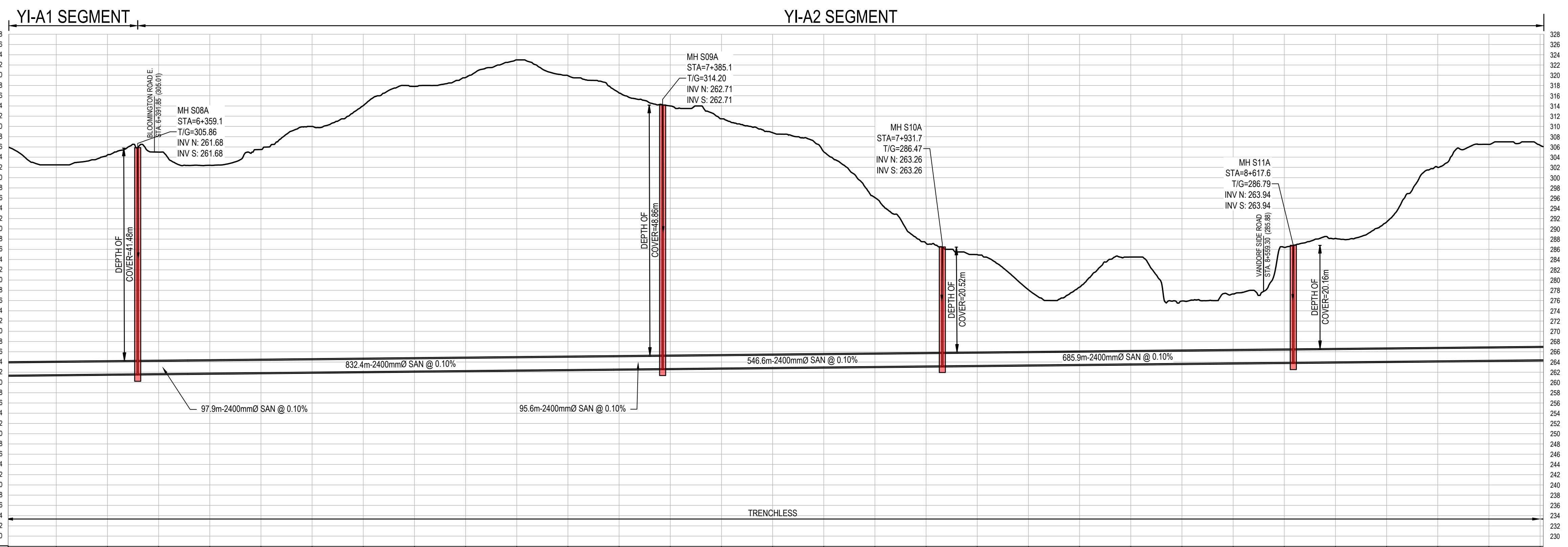
THE LOCATION OF UTILITIES IS APPROXIMATE ONLY, AND THE EXACT LOCATION SHOULD BE DETERMINED BY CONSULTING THE MUNICIPAL AUTHORITIES AND UTILITY COMPANIES CONCERNED.

GHD Ltd.
 455 Phillip Street
 Waterloo, Ontario N2L 3X2 Canada
 T 1 519 884 0510 F 1 519 884 0525
 Conditions of Use
 This document and the ideas and designs incorporated herein, as an instrument of professional service, is the property of GHD. This document may only be used by GHD's client (and any other person who GHD has agreed can use this document) for the purpose for which it was prepared and must not be used by any other person or for any other purpose.

No.	DATE	REVISIONS	BY
1	2023-09-29	ISSUED FOR YRSW PROJECT REPORT	T.C.

York Region
 Environmental Services

DATE APR. 2023	YORK REGION SEWAGE WORKS NORTH YDSS EXPANSION	SCALE 1:5000
DESIGN H.M		DWG. NO. CI-D020
DRAWN E.Lee		CONT. NO. 0
CHECKED M.Blouin		SHEET NO. 20
Y1-A LESLIE ST TRUNK SWR PHASES 1&2 PLAN & PROFILE STA. 3+100 TO 6+100		



Station	Existing Ground Elevation	Invert Elevation
6+200	302.59	
6+300	304.47	
6+400	304.69	261.68
6+500	302.47	261.78
6+600	305.49	
6+700	312.00	
6+800	314.69	
6+900	317.28	
7+000	318.98	
7+100	323.00	
7+200	318.81	
7+300	316.53	262.61
7+400	314.69	262.71
7+500	311.49	
7+600	308.78	
7+700	305.05	
7+800	298.11	
7+900	297.19	263.26
8+000	294.67	263.26
8+100	278.69	
8+200	278.64	
8+300	294.51	
8+400	278.89	
8+500	277.29	
8+600	288.39	263.94
8+700	288.17	263.94
8+800	291.37	
8+900	302.01	
9+000	305.59	
9+100	308.32	

LEGEND	
SYMBOLS	DESCRIPTION
	PROTECTED COUNTRY SIDE
	LSRCA / TRCA REGULATORY LIMIT
	SHAFT LOCATION
	GRAVITY ALIGNMENT
	FORCEMAIN ALIGNMENT
	LAND PARCELS
	CONSTRUCTION COMPOUND

- GENERAL NOTES:
- THE HORIZONTAL AND VERTICAL ALIGNMENTS PRESENTED ON THIS SET OF DRAWINGS IS BASED ON A CONCEPTUAL DESIGN CREATED AS A PROOF OF CONCEPT TO CONVEY ANTICIPATED WASTEWATER FLOWS AS OUTLINED IN THE PROJECT REPORT. THE FINAL LOCATIONS AND ELEVATIONS OF PUMP STATIONS, GRAVITY SEWERS, FORCEMAINS, AND OTHER SUPPORTING INFRASTRUCTURE ARE CONCEPTUAL AND SUBJECT TO REVISION WITHIN THE STUDY AREAS FOLLOWING FURTHER FIELD INVESTIGATION, UTILITY COORDINATION, AND DESIGN.
 - ALL ALIGNMENTS ARE SUBJECT TO CONSIDERATION OF CONCURRENT PROJECTS BY OTHER STAKEHOLDERS.
 - THE VERTICAL PROFILE IS SUBJECT TO CHANGE BASED ON DETAILED ENGINEERING INVESTIGATIONS AND ENGINEERING ANALYSIS. DEPTH OF SEWER INVERTS AND SHAFTS MAY BE ADJUSTED TO SUIT HYDRAULIC IMPROVEMENTS, CLEARANCES BELOW WATER BODIES, EXISTING INFRASTRUCTURE, AND GEOTECHNICAL AND HYDROGEOLOGICAL CONDITIONS.
 - POTENTIAL COMPOUND AREAS ARE IDENTIFIED ON THE DRAWINGS AND ARE SUBJECT TO CHANGE IN SIZE, SHAPE, LOCATION AND QUANTITY IN ORDER TO SUPPORT CONSTRUCTION ACTIVITIES.
 - WHERE CONCEPT DESIGN LOCATIONS ARE LOCATED WITHIN CONSERVATION AUTHORITY REGULATED AREAS, FURTHER INVESTIGATION WILL BE UNDERTAKEN TO DETERMINE AND MINIMIZE IMPACTS. IF CONSTRUCTION WITHIN A FLOODPLAIN AREA CANNOT BE AVOIDED THEN THE LOCATIONS WHERE FLOODPLAIN STORAGE OR COMPENSATION COULD BE ACCOMMODATED WILL BE IDENTIFIED DURING DESIGN.
 - REGION OF YORK ORTHOPHOTOGRAPHY PROVIDED BY ArcGIS

84405-GHD-XX-DRG-CI-D021.dwg

THE LOCATION OF UTILITIES IS APPROXIMATE ONLY, AND THE EXACT LOCATION SHOULD BE DETERMINED BY CONSULTING THE MUNICIPAL AUTHORITIES AND UTILITY COMPANIES CONCERNED.



GHD Ltd.
455 Phillip Street
Waterloo, Ontario N2L 3X2 Canada
T 1 519 884 0510 F 1 519 884 0525
Conditions of Use
This document and the ideas and designs incorporated herein, as an instrument of professional service, is the property of GHD. This document may only be used by GHD's client (and any other person who GHD has agreed can use this document) for the purpose for which it was prepared and must not be used by any other person or for any other purpose.

No.	DATE	REVISIONS	BY
1	2023-09-29	ISSUED FOR YRSW PROJECT REPORT	T.C.



DATE	APR. 2023
DESIGN	H.M
DRAWN	E.Lee
CHECKED	M.Blouin

YORK REGION SEWAGE WORKS
NORTH YDSS EXPANSION

Y1-A LESLIE ST TRUNK SWR
PHASES 1&2 PLAN & PROFILE
STA. 6+100 TO 9+100

SCALE	1:5000
DWG. NO.	CI-D021
CONT. NO.	0
SHEET NO.	21