

**THE REGIONAL MUNICIPALITY OF YORK**

**BYLAW NO. 2018-26**

A bylaw to amend Bylaw No. R-1310-2002-112  
being a bylaw to prescribe maximum rates of speed  
on Don Mills Road/Leslie Street/The Queensway (Y.R. 12)

WHEREAS on December 19, 2002, Regional Council enacted Bylaw No. R-1310-2002-112 to prescribe maximum rates of speed on Don Mills Road/Leslie Street/The Queensway (Y.R. 12);

AND WHEREAS Schedule "A" to the said Bylaw sets out the maximum rates of speed as prescribed by Council from time to time;

NOW THEREFORE the Council of The Regional Municipality of York enacts as follows:

1. Bylaw No. R-1310-2002-112 is hereby amended by deleting page 16 of Schedule "A" and inserting page 16 as set out in the attached Appendix "A".
2. Schedule "A" to Bylaw R-1310-2002-112 is hereby consolidated as set out in the attached Appendix "B".

ENACTED AND PASSED on April 19, 2018.

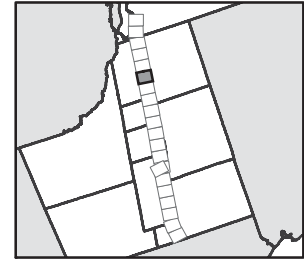
CHRISTOPHER RAYNOR

WAYNE EMMERSON

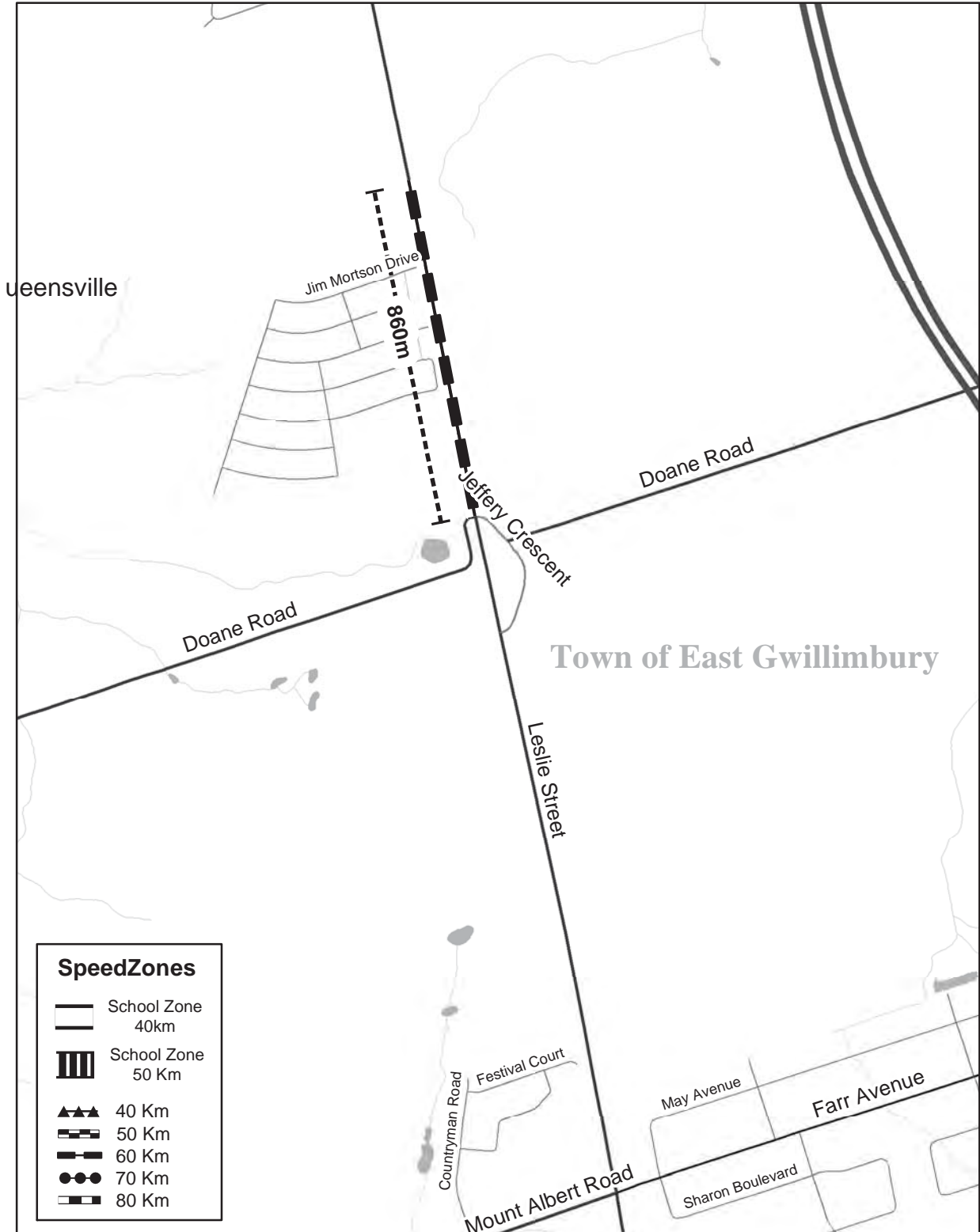
Regional Clerk

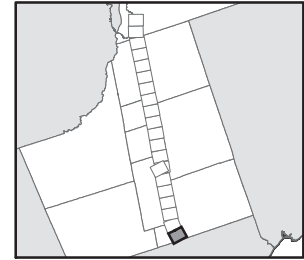
Regional Chair

*Authorized by Clause 6, Report 6 of the Committee of the Whole, adopted by Regional Council at its meeting on April 19, 2018*

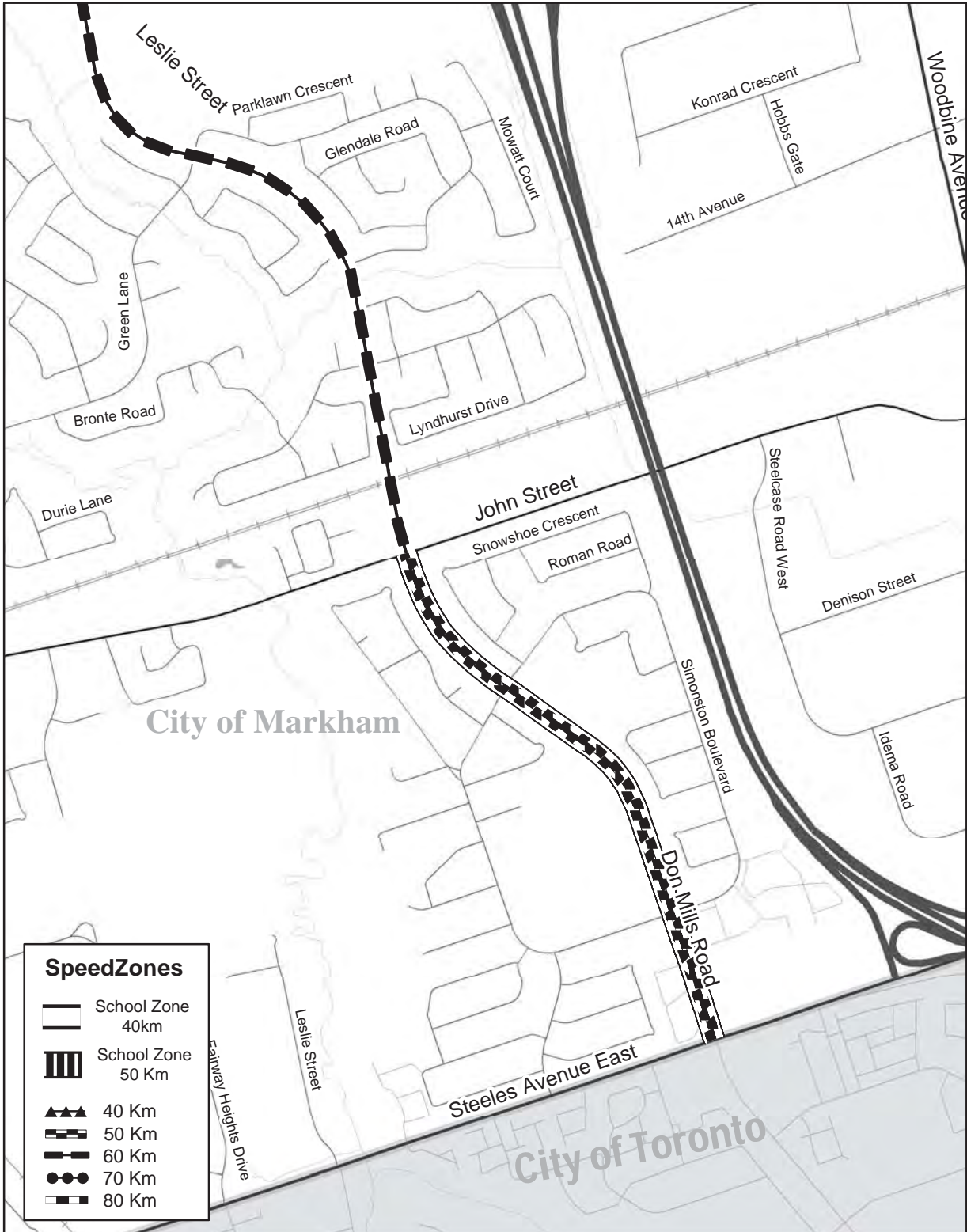


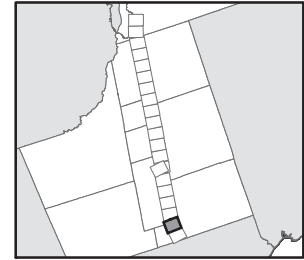
### Regional Road #12



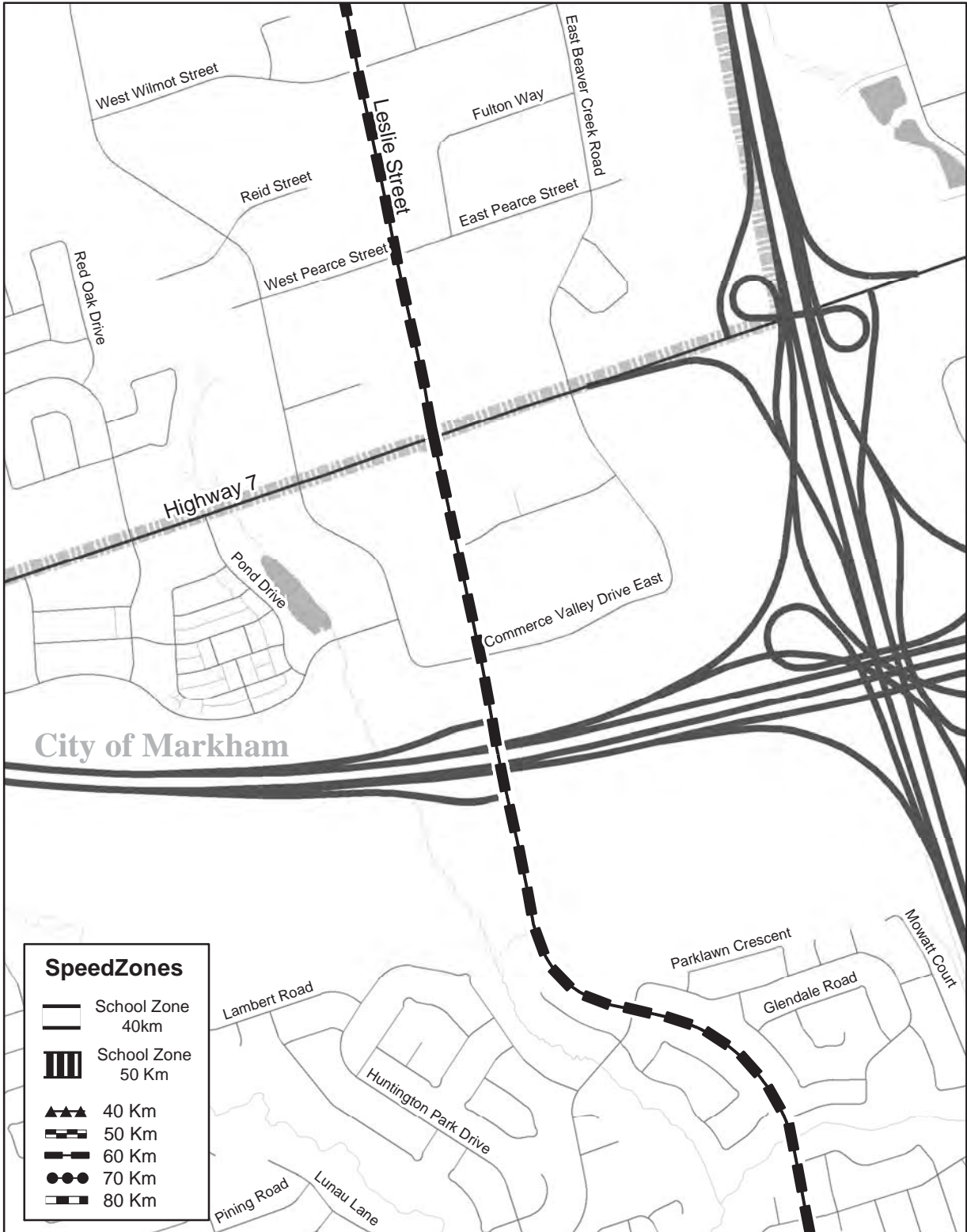


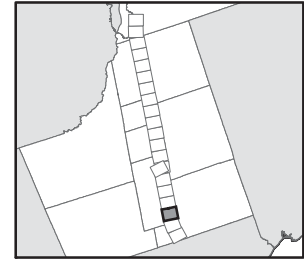
### Regional Road #12



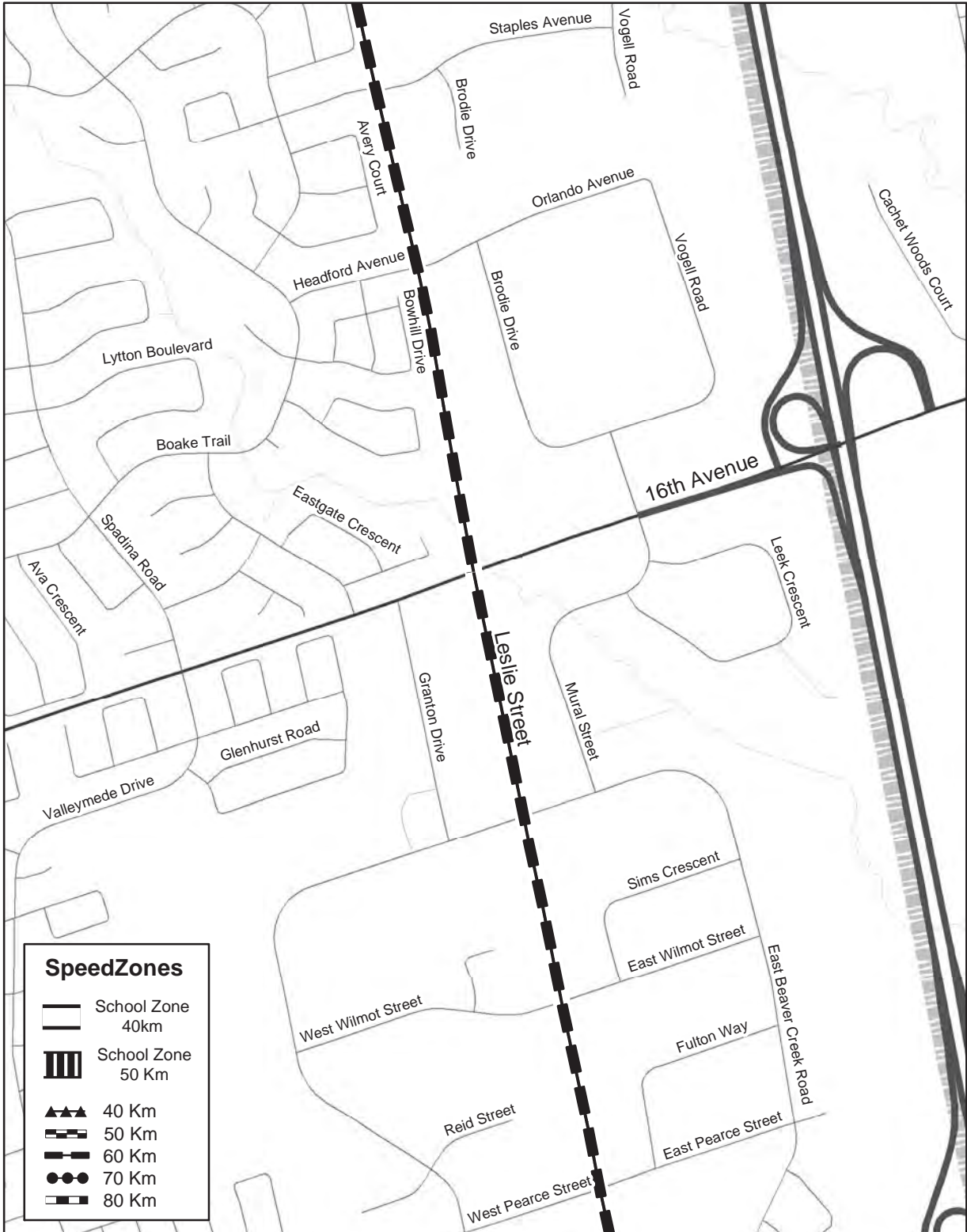


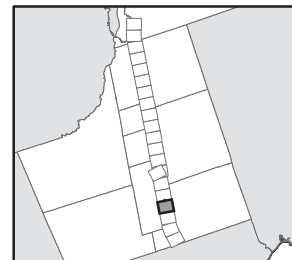
### Regional Road #12



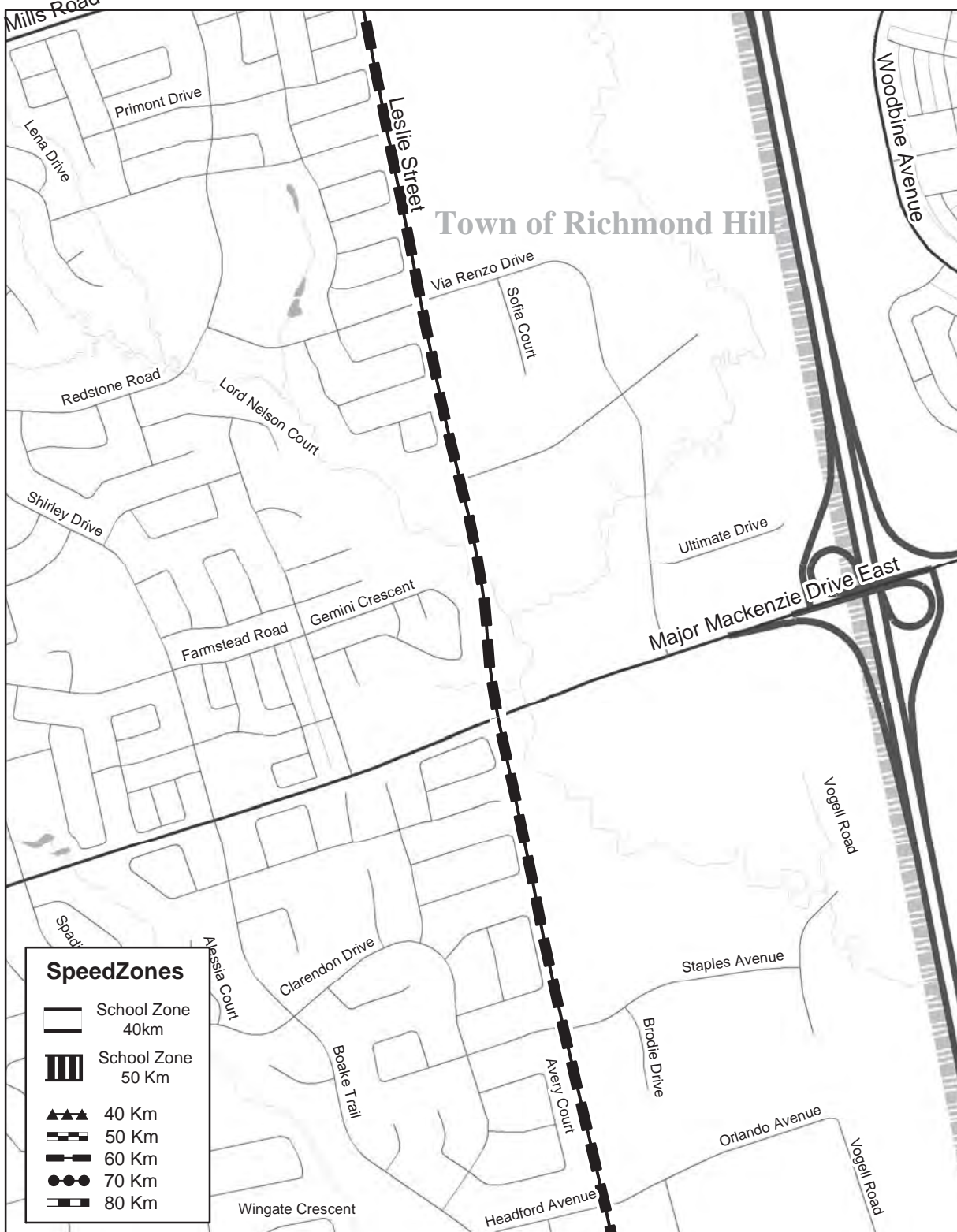


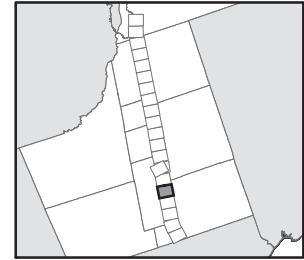
### Regional Road #12



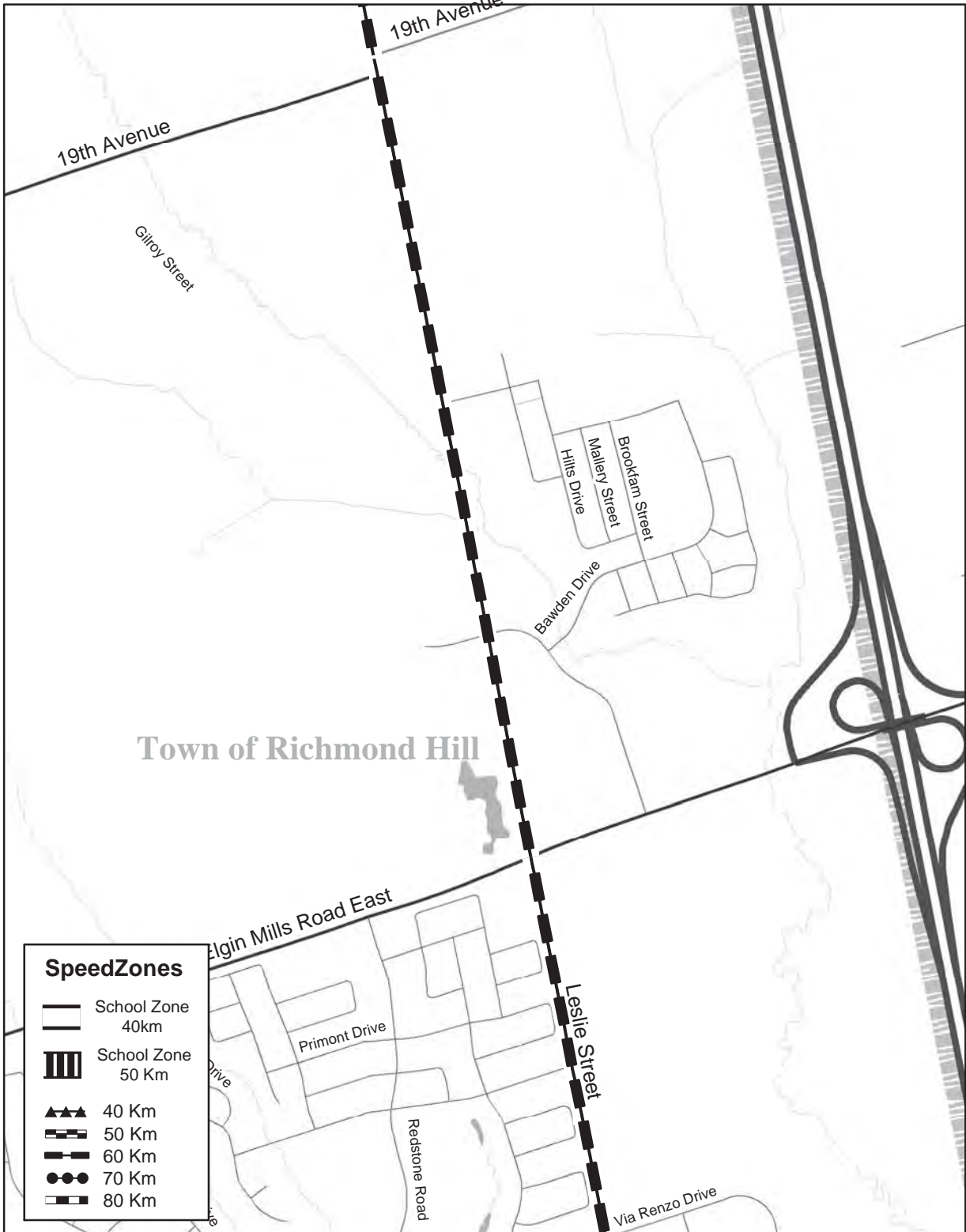


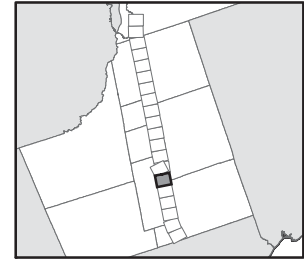
### Regional Road #12



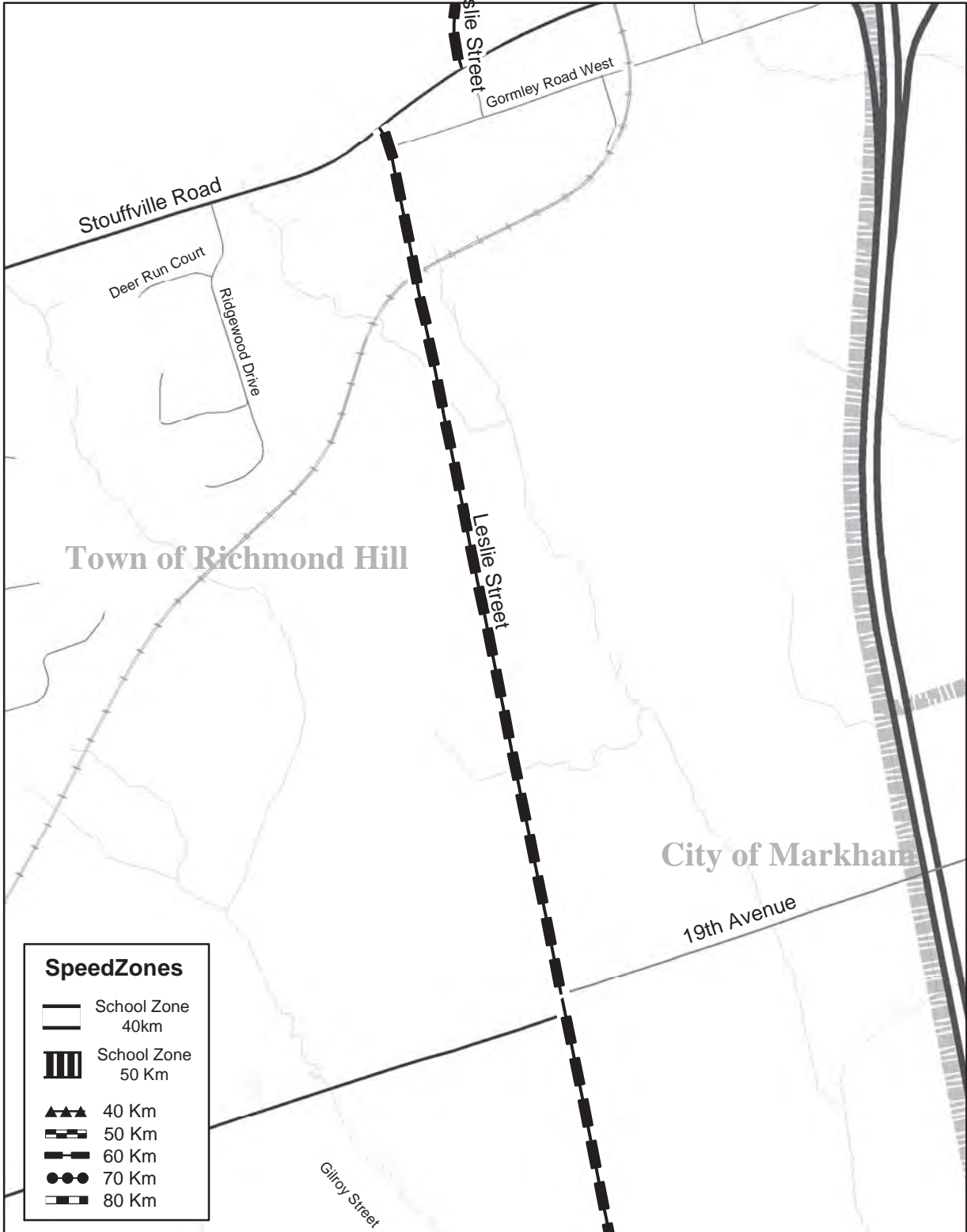


### Regional Road #12

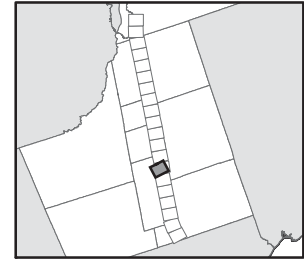




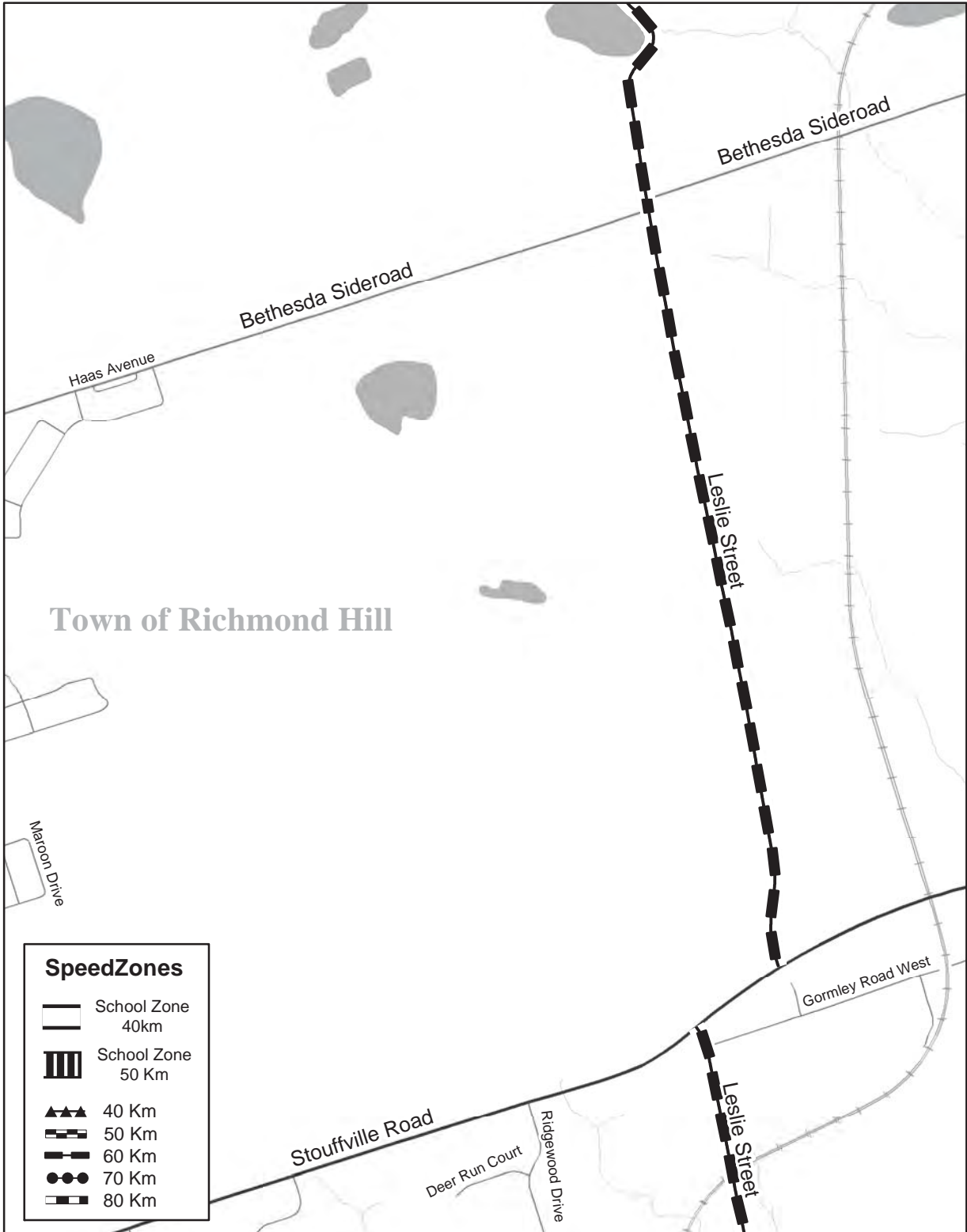
### Regional Road #12

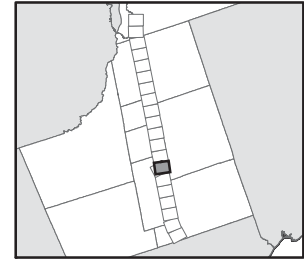




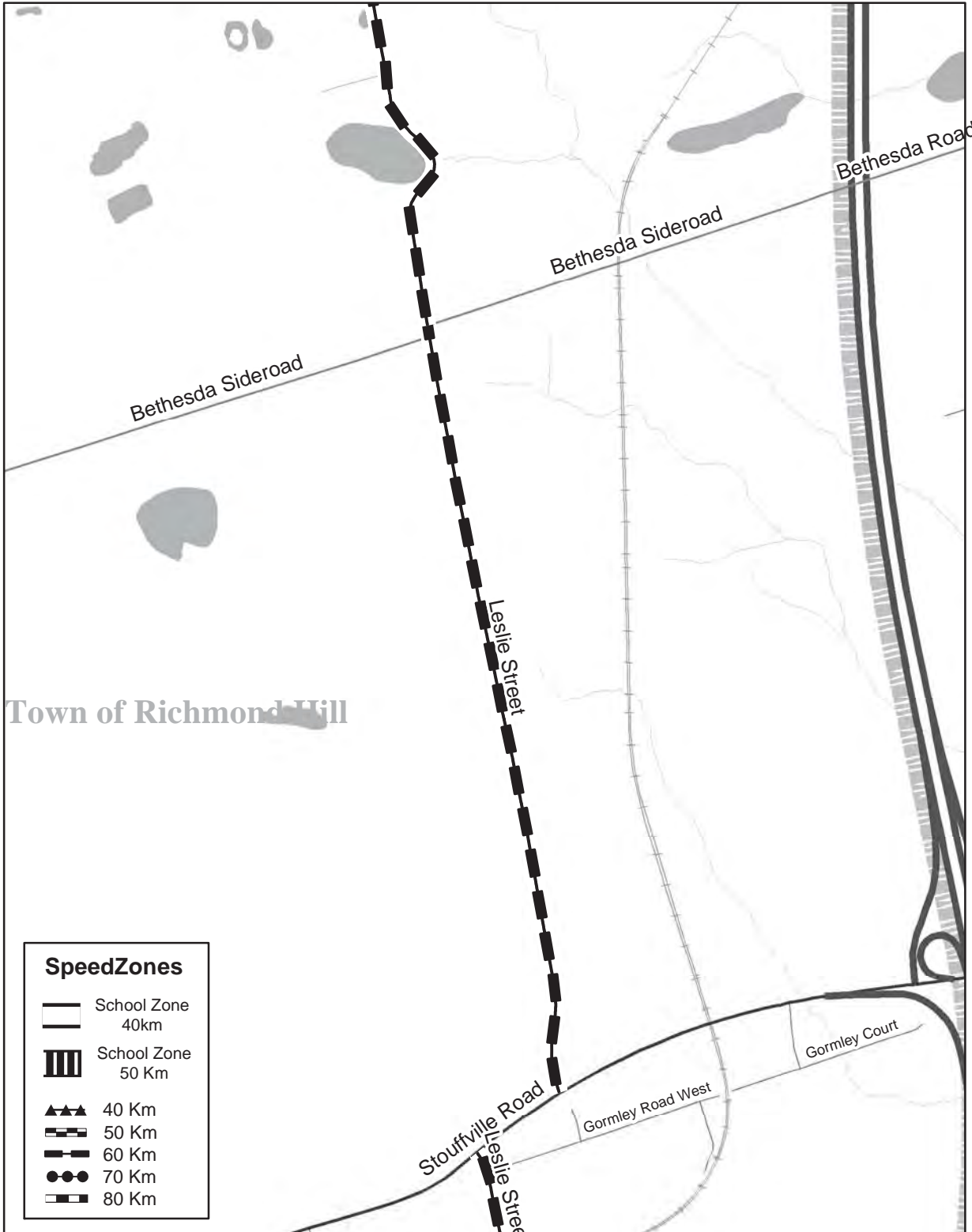


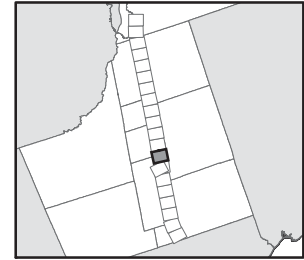
### Regional Road #12



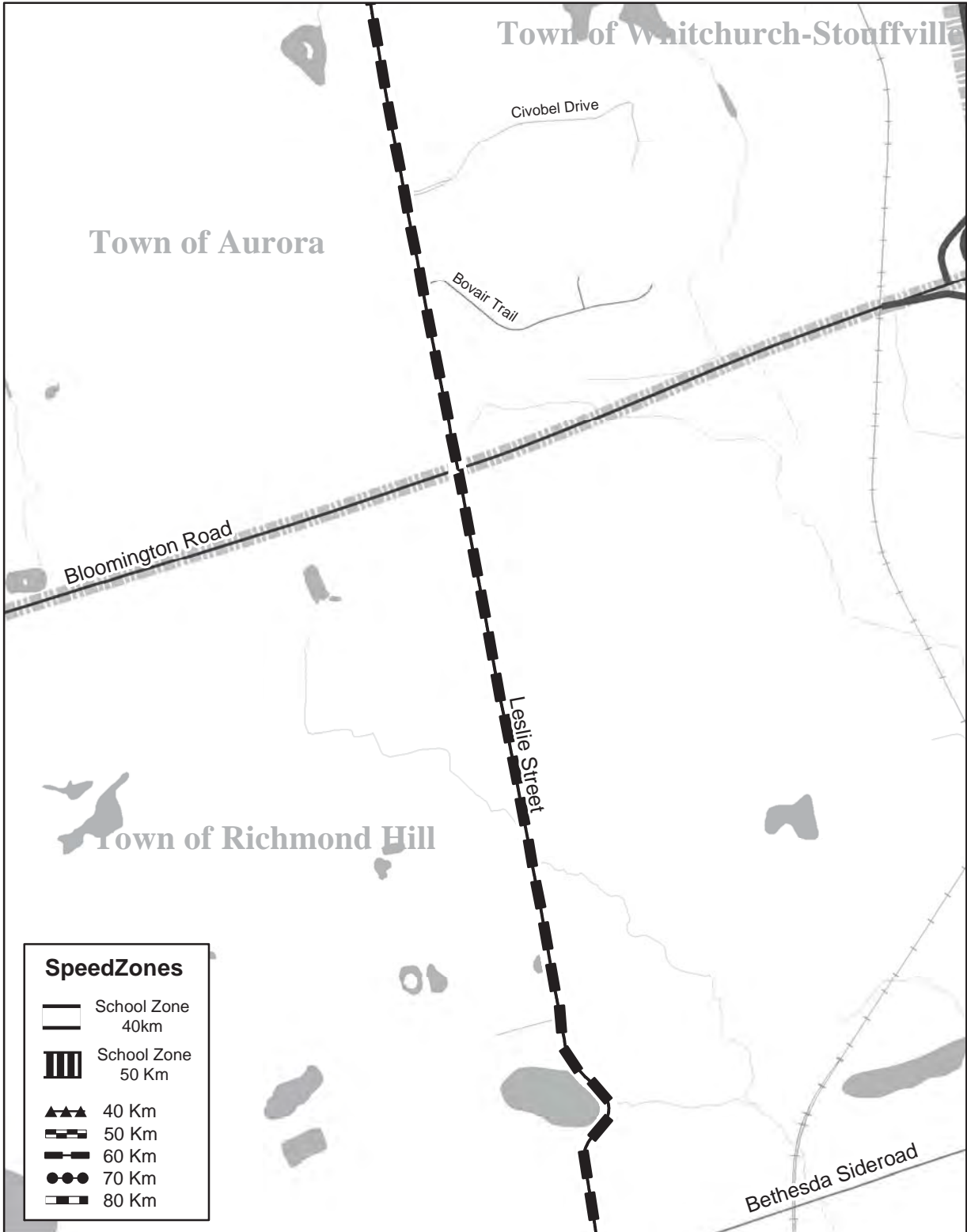


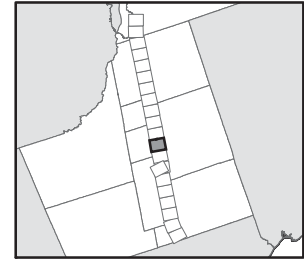
### Regional Road #12



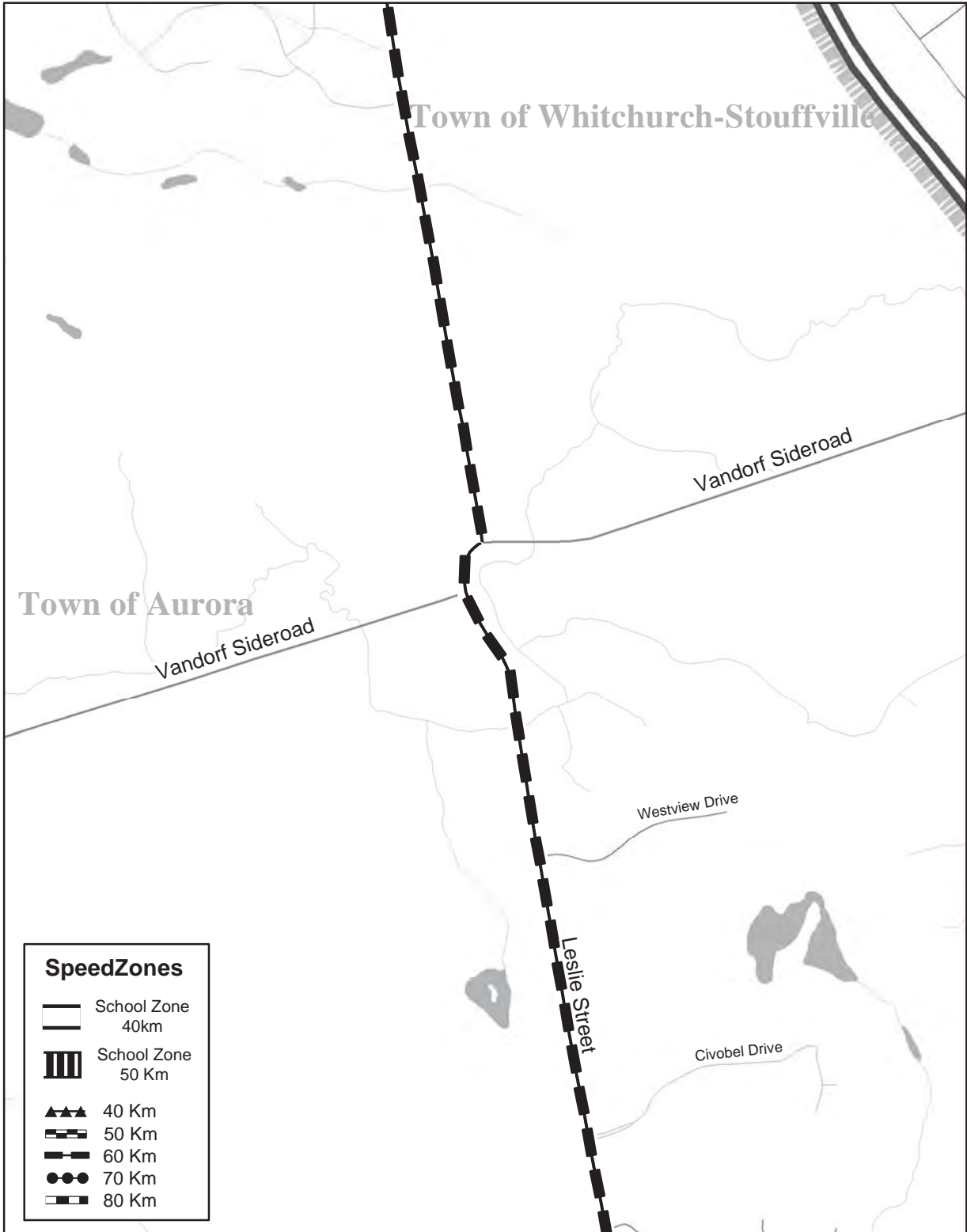


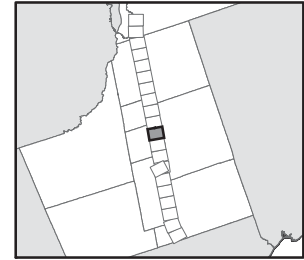
### Regional Road #12



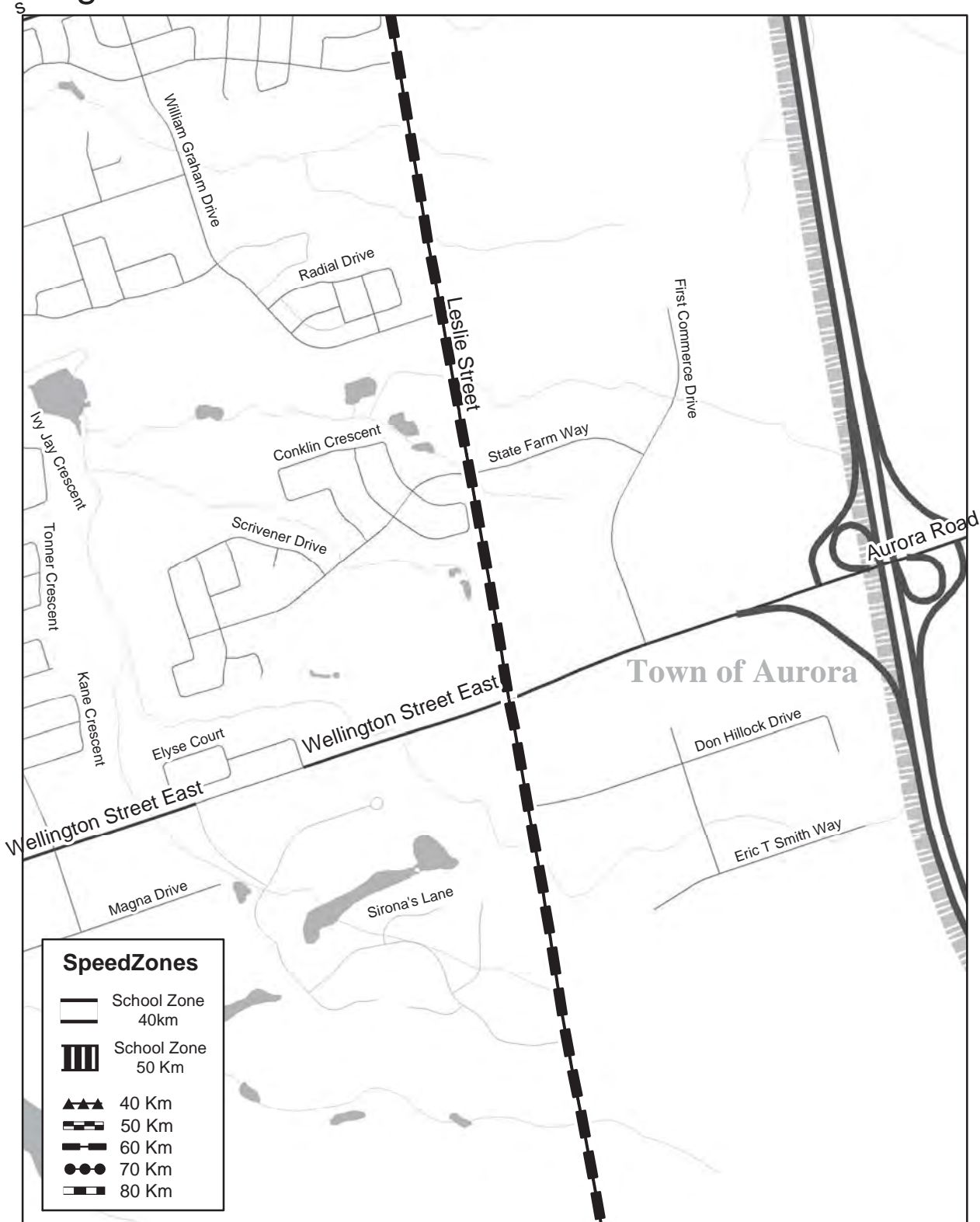


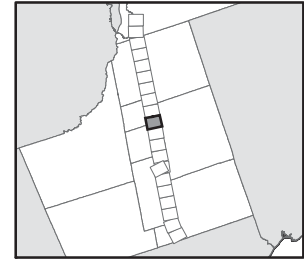
### Regional Road #12



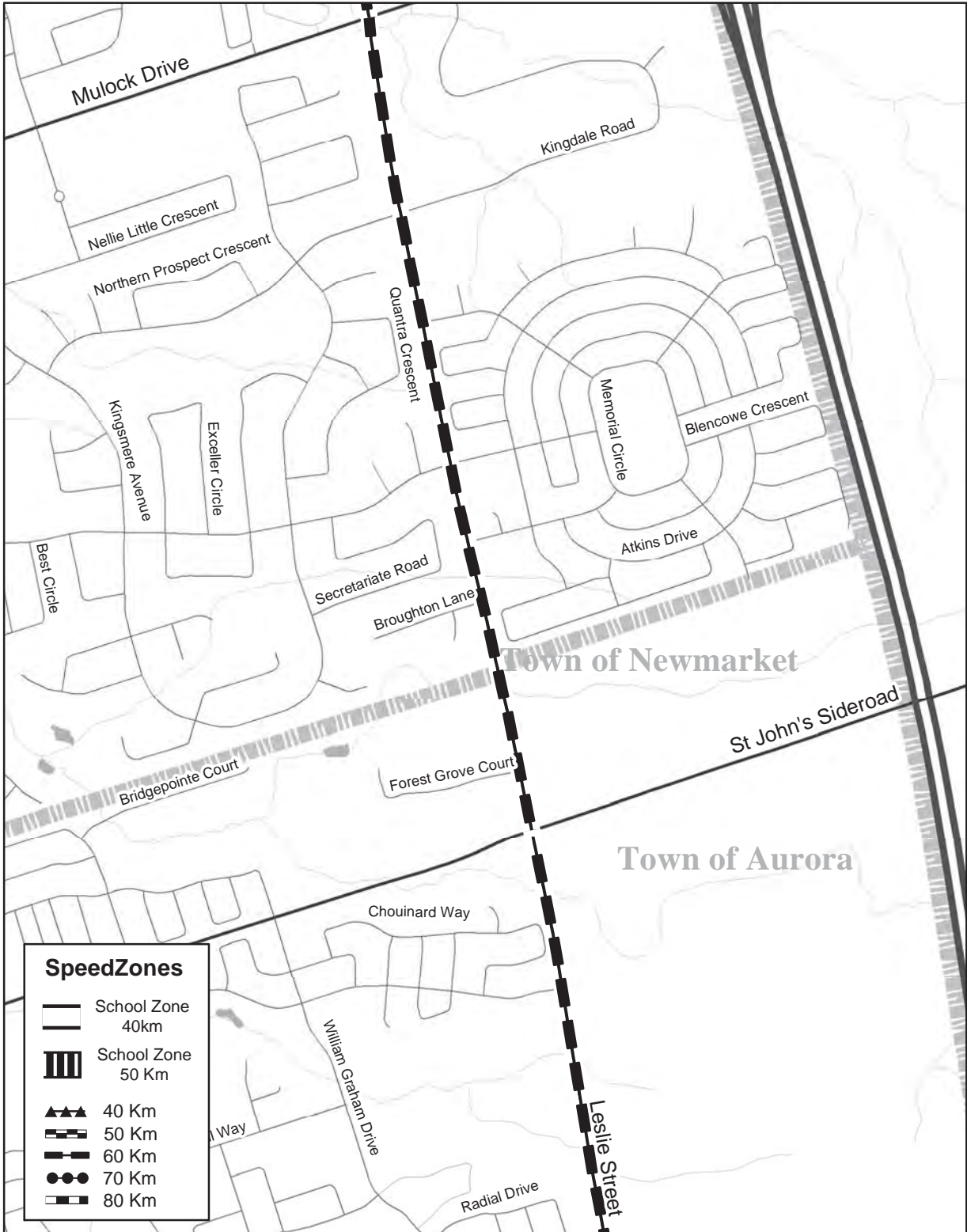


### Regional Road #12

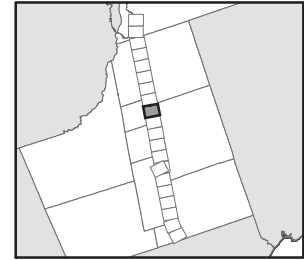




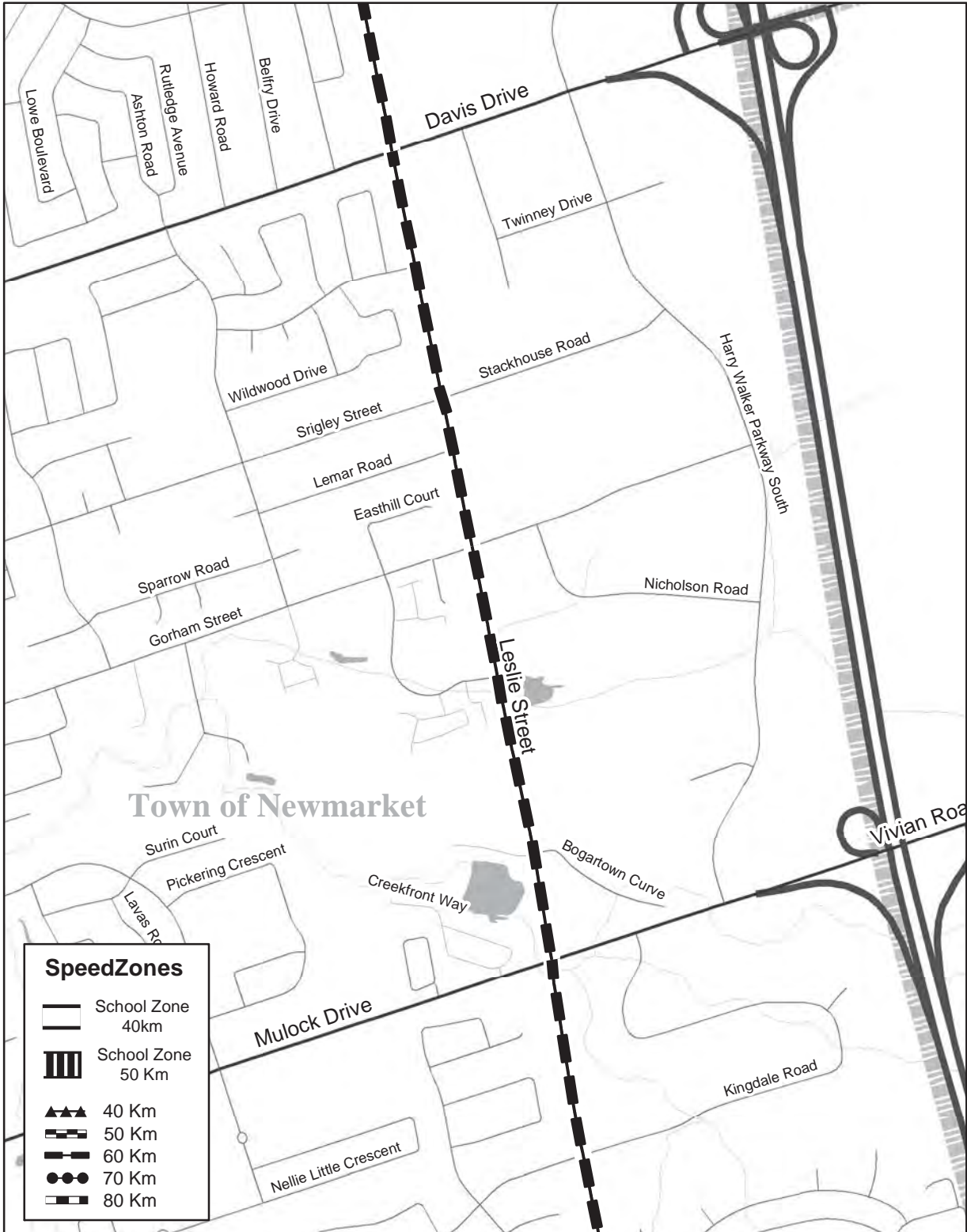
### Regional Road #12

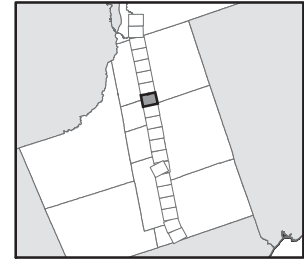


| Speed Zones |                      |
|-------------|----------------------|
|             | School Zone<br>40km  |
|             | School Zone<br>50 Km |
|             | 40 Km                |
|             | 50 Km                |
|             | 60 Km                |
|             | 70 Km                |
|             | 80 Km                |

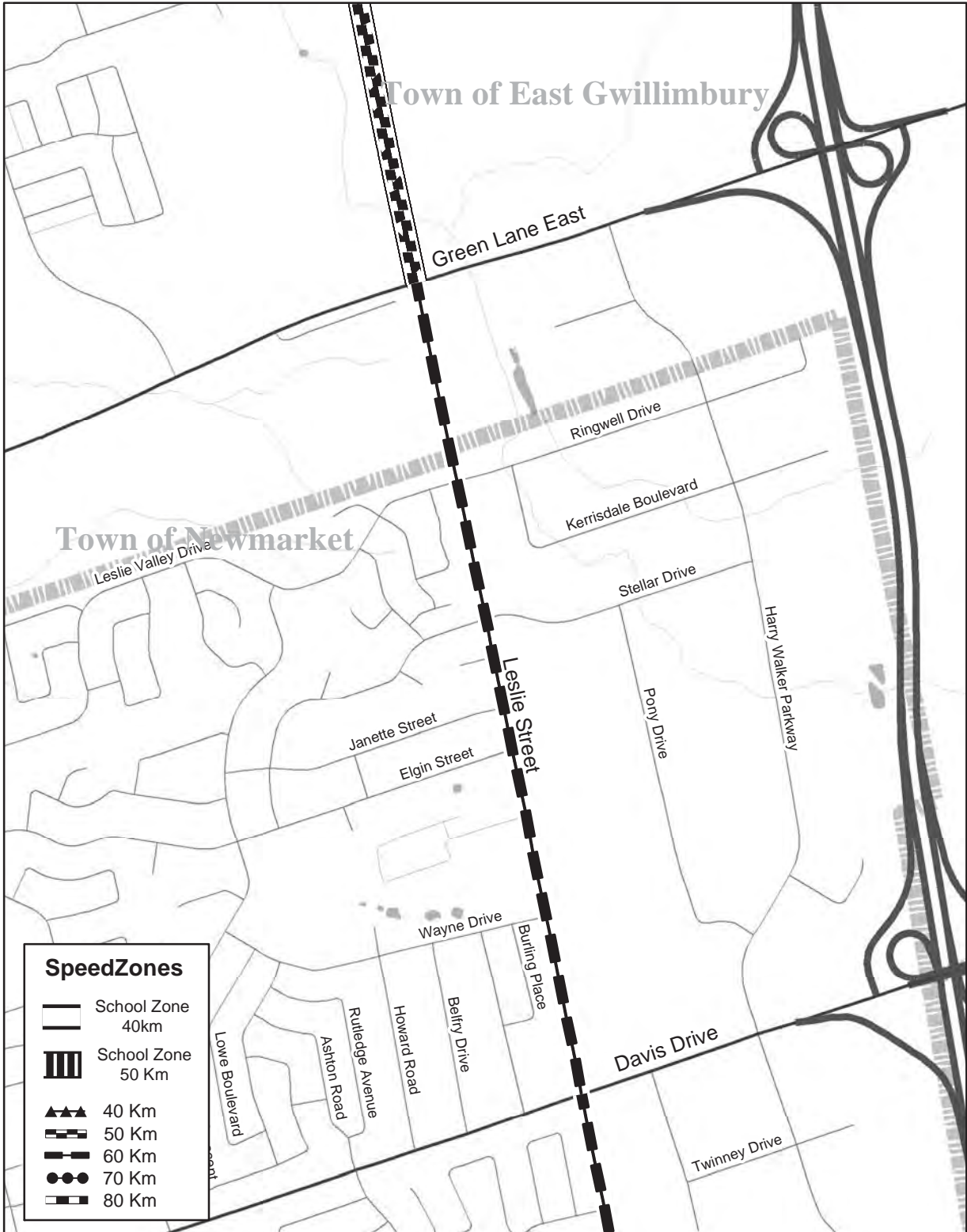


### Regional Road #12

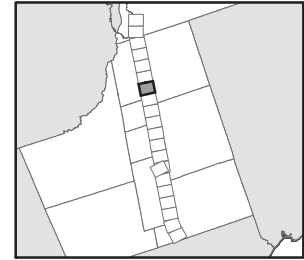




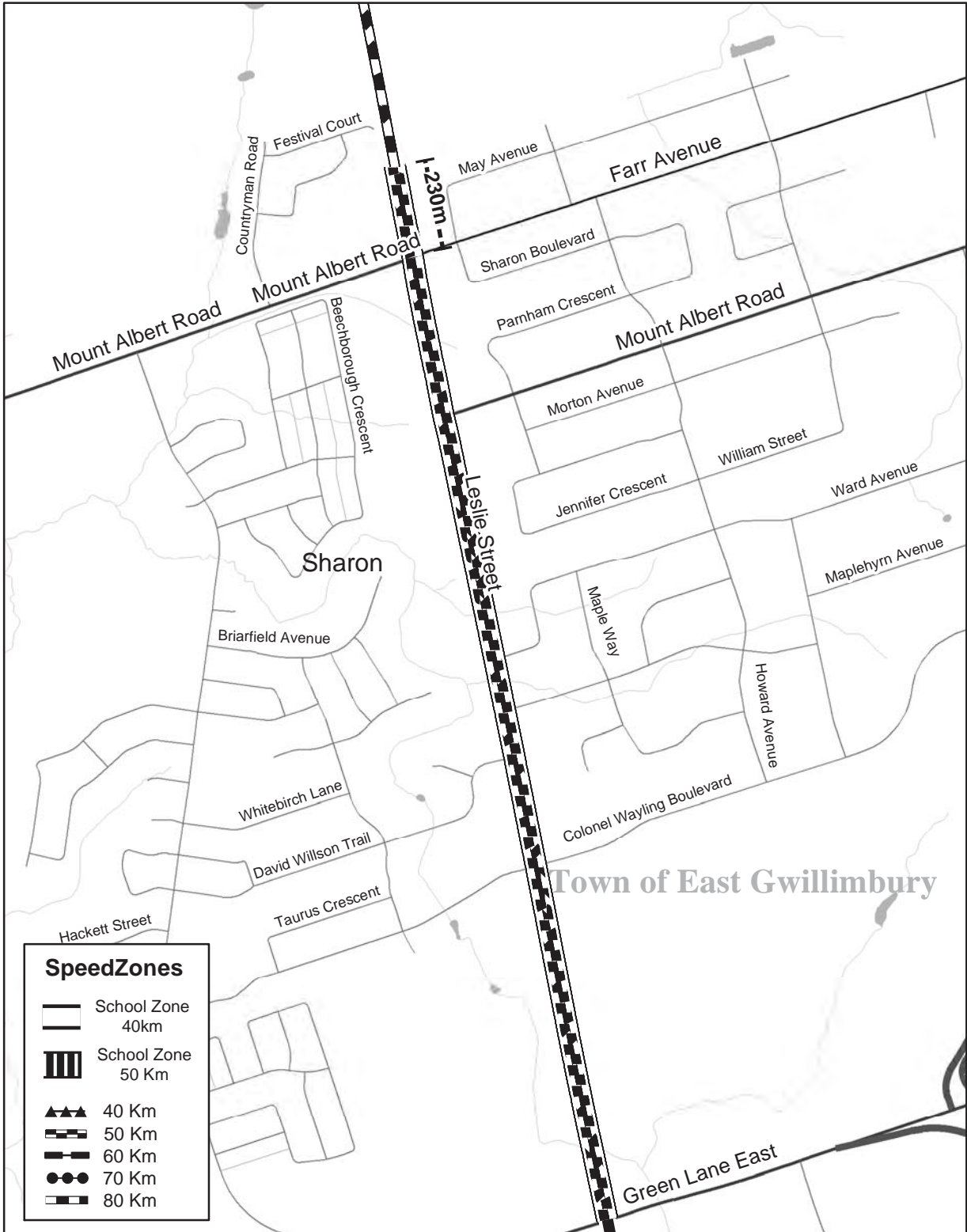
### Regional Road #12

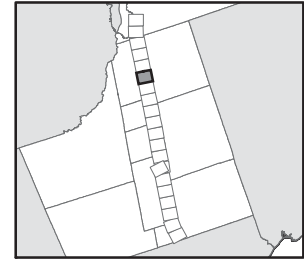




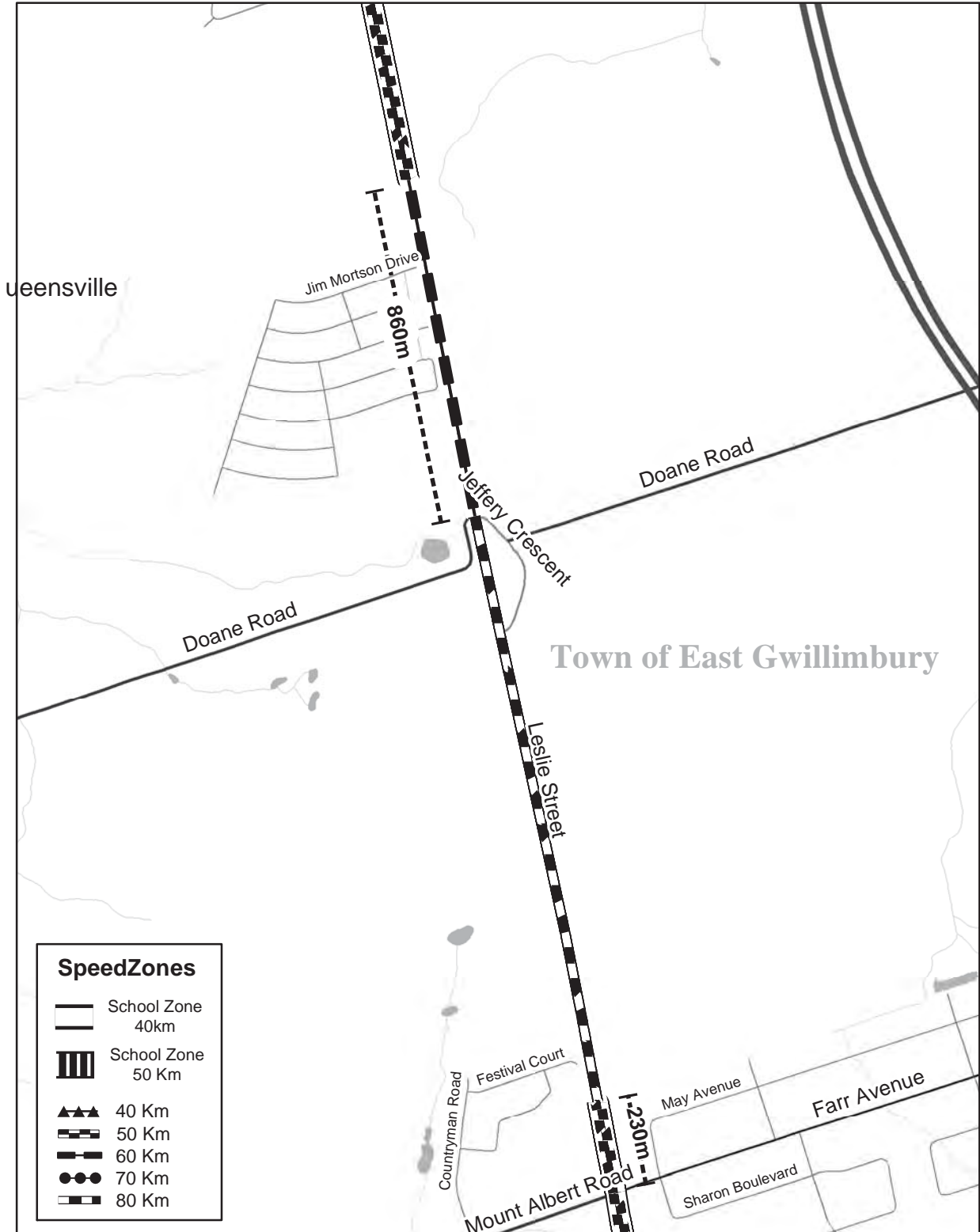


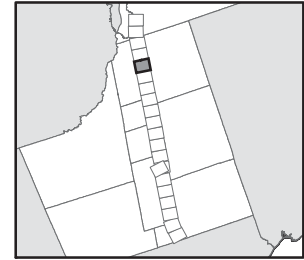
### Regional Road #12



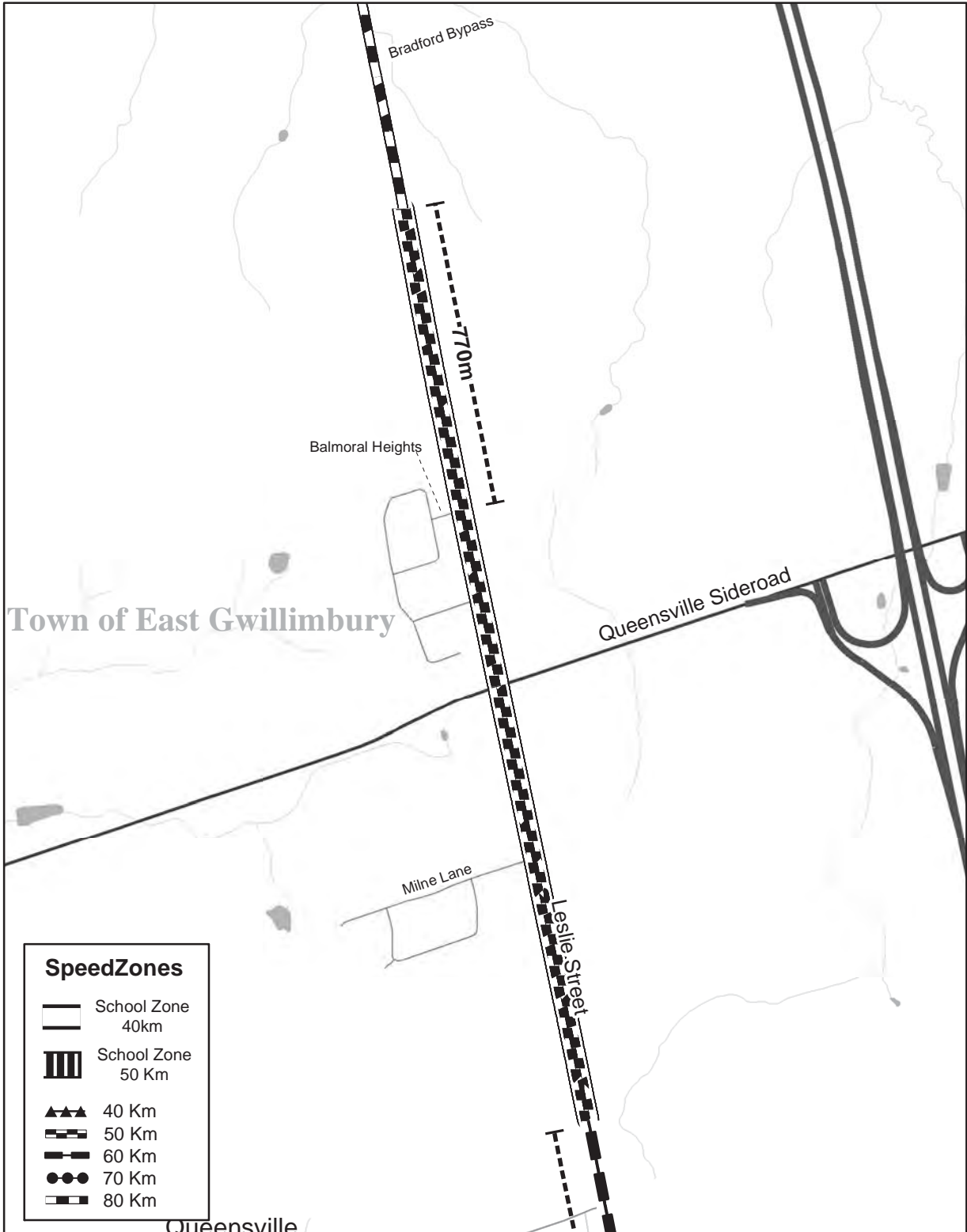


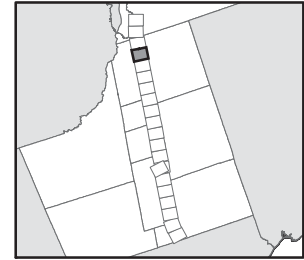
### Regional Road #12



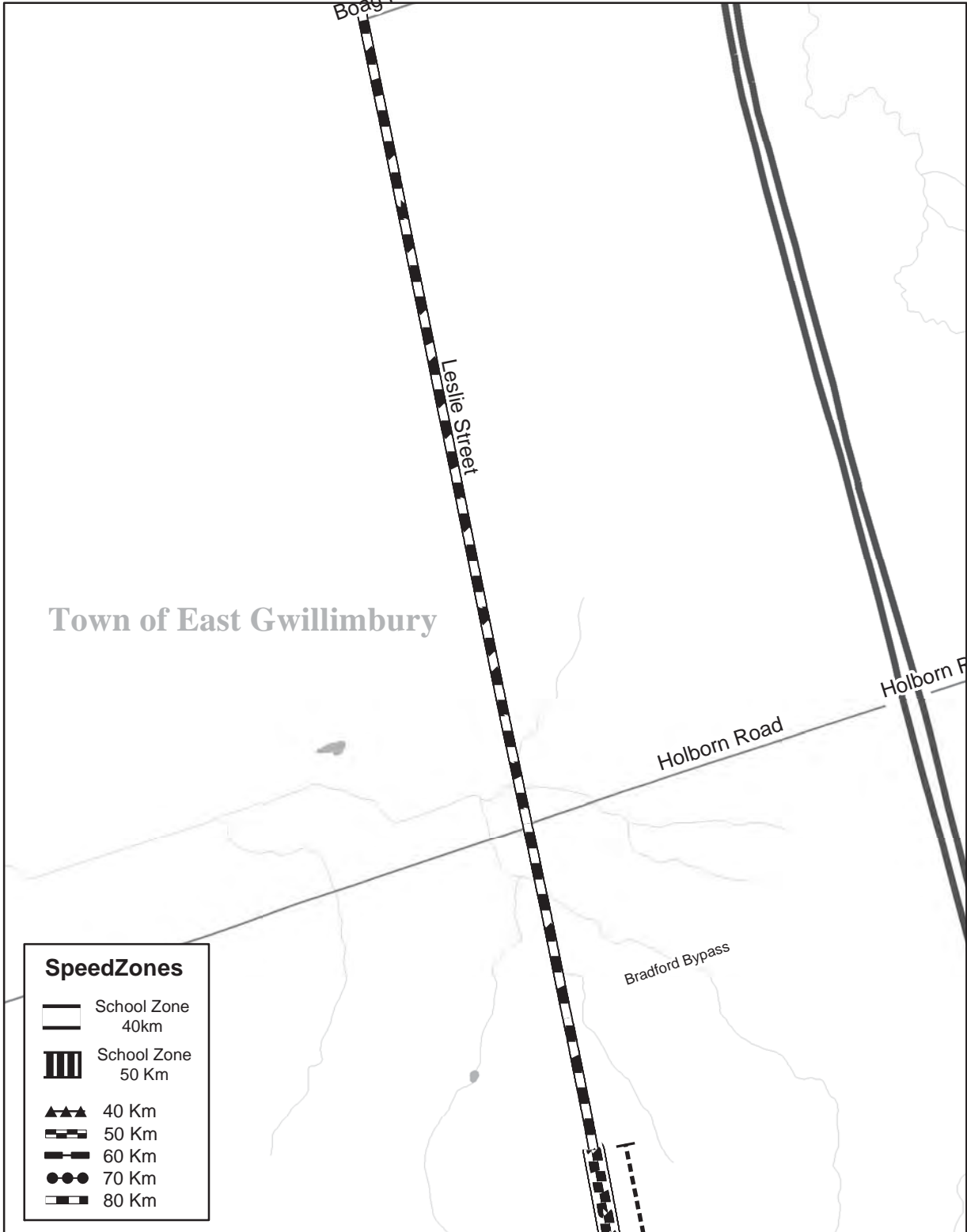


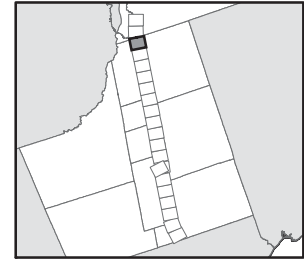
### Regional Road #12



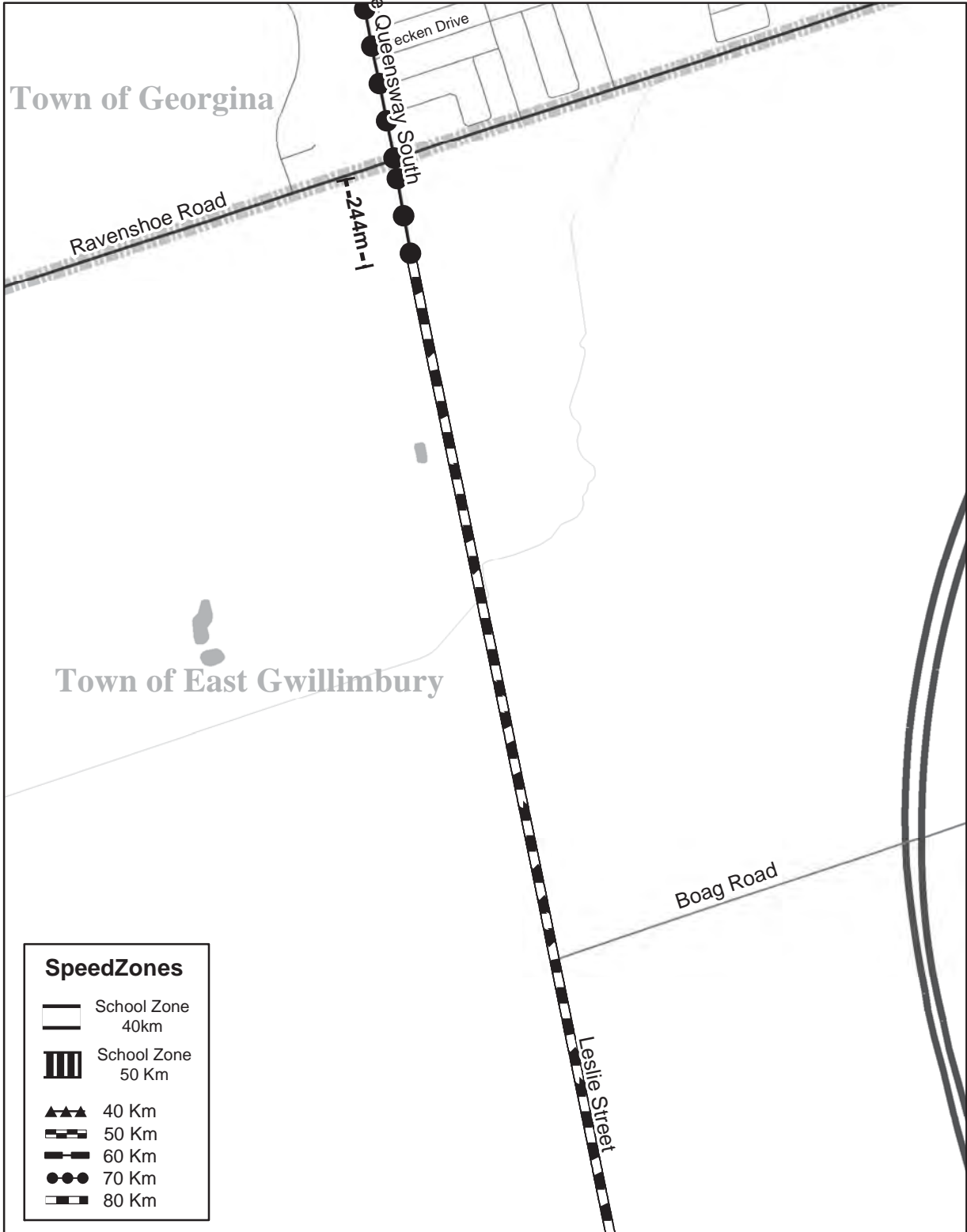


### Regional Road #12

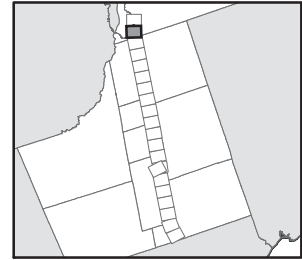




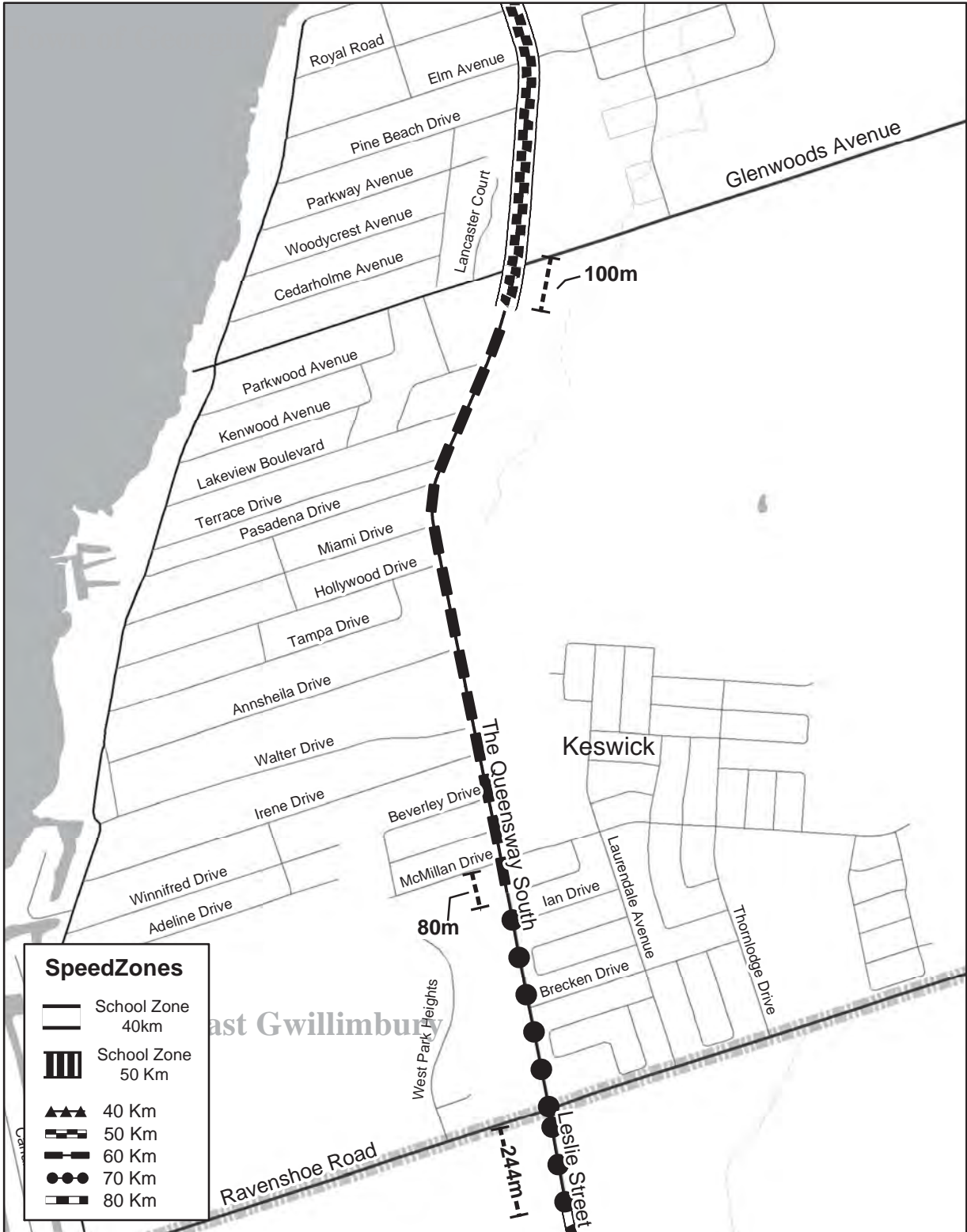
### Regional Road #12

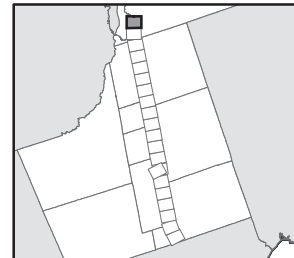


| SpeedZones |                      |
|------------|----------------------|
|            | School Zone<br>40km  |
|            | School Zone<br>50 Km |
|            | 40 Km                |
|            | 50 Km                |
|            | 60 Km                |
|            | 70 Km                |
|            | 80 Km                |



### Regional Road #12





### Regional Road #12

