

CREATING CONNECTIONS IN YORK REGION

JOHN JENSEN, CHIEF CAPITAL OFFICER - METROLINX
MARCH 2, 2017



METROLINX
An agency of the Government of Ontario

GRIDLOCK COSTS OUR ECONOMY



REGIONAL TRANSFORMATION



METROLINX

PLAN



BUILD











OPERATE

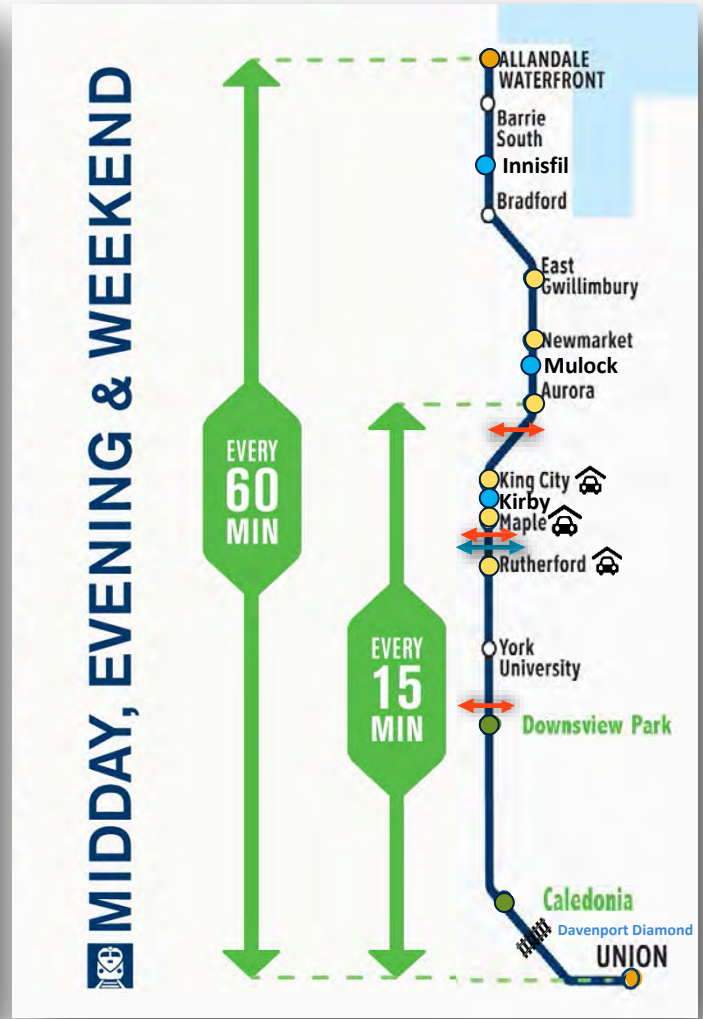
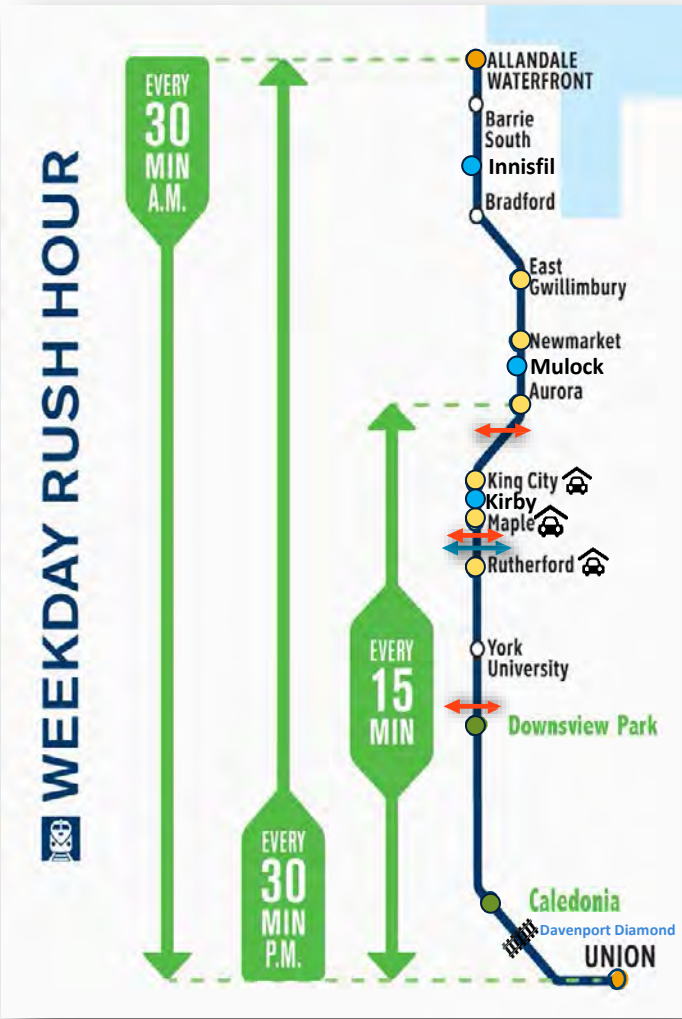
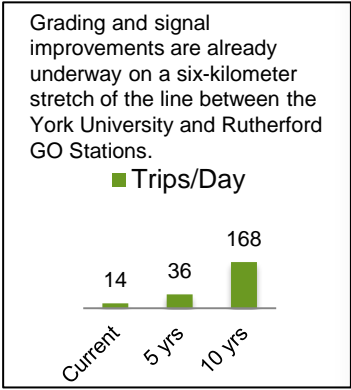


GO EXPANSION PROGRAM



BARRIE SERVICE IMPROVEMENTS

- 3 Parking Structures 
- Upgrades to 6 Stations (new platforms, accessibility, active transportation, etc.) 
- Corridor Electrification and Substation 
- Bridge Widenings 
- Rutherford Grade Separation 
- 2 New Stations 
- Davenport Diamond Grade Separation 
- Proposed Stations 



STOUFFVILLE SERVICE IMPROVEMENTS

- All-day, 15-minute, two-way from Union to Unionville.
- All-day, hourly, two-way from Unionville to Mount Joy.
- Expanded services will be phased in gradually over 10 years.



MUNICIPAL ENGAGEMENT

As the volume of work increases, the importance of establishing detailed tables where we can have regular dialogue in support of advancing capital infrastructure projects with municipal partners is critical to delivering transit to communities across the region.

These opportunities include:

- **RER Capital Leaders Forum** (network-wide table for executive dialogue and advice related to GO expansion projects)
- **RER Regional Sessions** (focus on providing regular updates for municipal staff)
- **Municipal Program Committees** (municipal specific committees focussed on advancing specific projects)

UPDATE ON YORK REGION RAIL INFRASTRUCTURE

INFRASTRUCTURE NEEDS FOR GO EXPANSION

- Bringing more transit options and new levels of service doesn't come easy.
- Metrolinx is undertaking one of the largest infrastructure projects in North America.
- There is community-level disruption required to build a region-wide, integrated transit network.



New Track

150 kilometres of new dedicated GO track will allow for more uninterrupted service.



New Trains

New electric trains will travel faster for longer and reduce travel times.



New Bridges and Tunnels

Bridges and tunnels that eliminate intersections with rail and road traffic will provide more reliable GO train service.



New Renovations

New and improved stations will make your journey more comfortable, from start to finish.

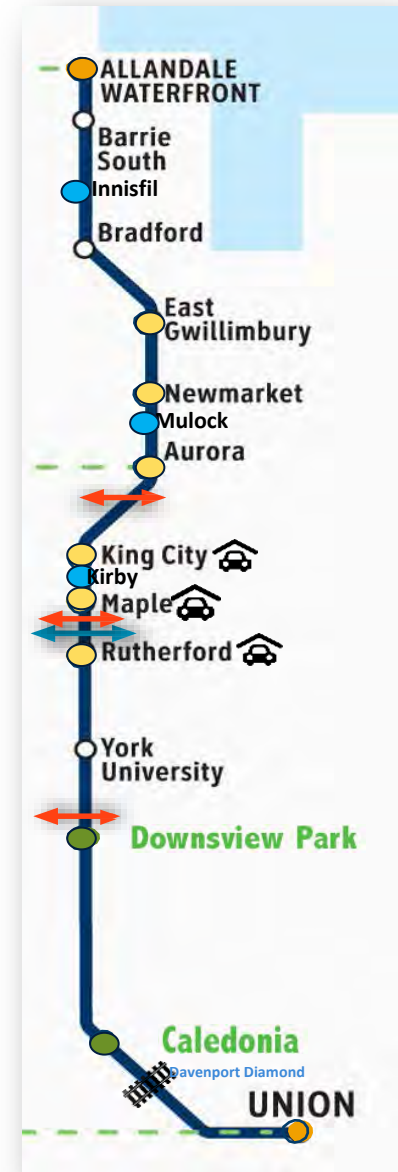


Overhead Catenary

BARRIE CORRIDOR PROGRAM OVERVIEW

Infrastructure Build:

- Double track from Steeles to Allandale
- Signal improvements
- Bridge structure modifications
- Bradford layover expansion and modifications
- Barrie layover expansion
- Station modifications/parking expansion
- Improved rail crossings
- Grade separations
- Customer experience improvements



BARRIE CORRIDOR PROGRAM OVERVIEW: YORK REGION

Design: <5% Complete
Construction:

Design: <5% Complete
Construction:

Design: 2016-2019
Construction: 2019-2022

Design: 2017
% Complete
Construction: 2018-2022

Design/Phase I Construction: 2017
Phase II Construction: 2018-2022

Design: 2017
% Complete
Construction: 2017

Kirby GO

Maple GO

Rutherford Road
Grade Separation

Rutherford GO

Rutherford GO
Tunneling Works



* Dates Subject to Change

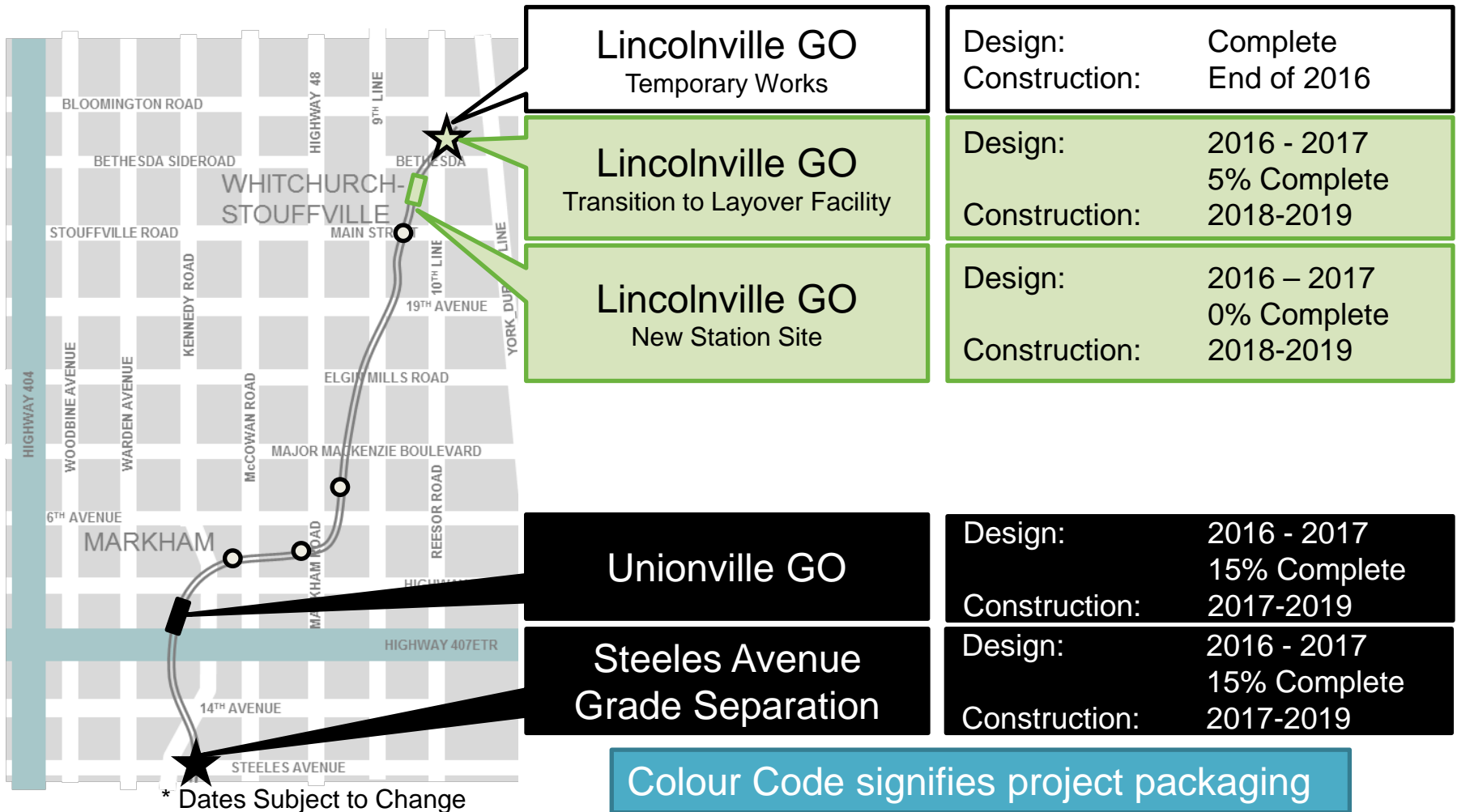
STOUFFVILLE CORRIDOR PROGRAM OVERVIEW

Infrastructure Build:

- Double track from Union to Unionville
- Signal improvements
- “Turn around” track at Unionville
- Bridge structure modifications
- Layover expansion and modifications
- Station modifications
- Improved rail crossings
- Grade separations
- Customer experience improvements

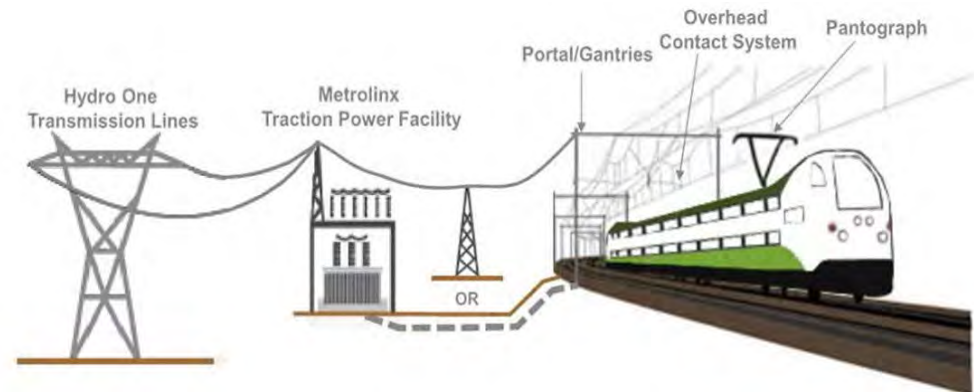


STOUFFVILLE CORRIDOR PROGRAM OVERVIEW: YORK REGION



ELECTRIFICATION

- In order to electrify, we need to build infrastructure including traction power substations, switching stations, paralleling stations, overhead contact systems and various safety modifications.
- This includes switching stations and paralleling stations at Maple, Rutherford and Lincolnville.
- Design excellence is part of designing this infrastructure.



NEW TRACK AND NEW STATIONS

NEW TRACK AND NEW STATIONS

- New Track Barrie Corridor
 - From Steeles Avenue to Aurora GO Station to support 15 minute service from Union Station.
- New Stations
 - Gormley (opened December 2016)
 - Kirby (near Keele Street)
 - Mulock (near Bayview Avenue)
 - Bloomington (construction mobilized)

NEW GO STATIONS: NEXT STEPS

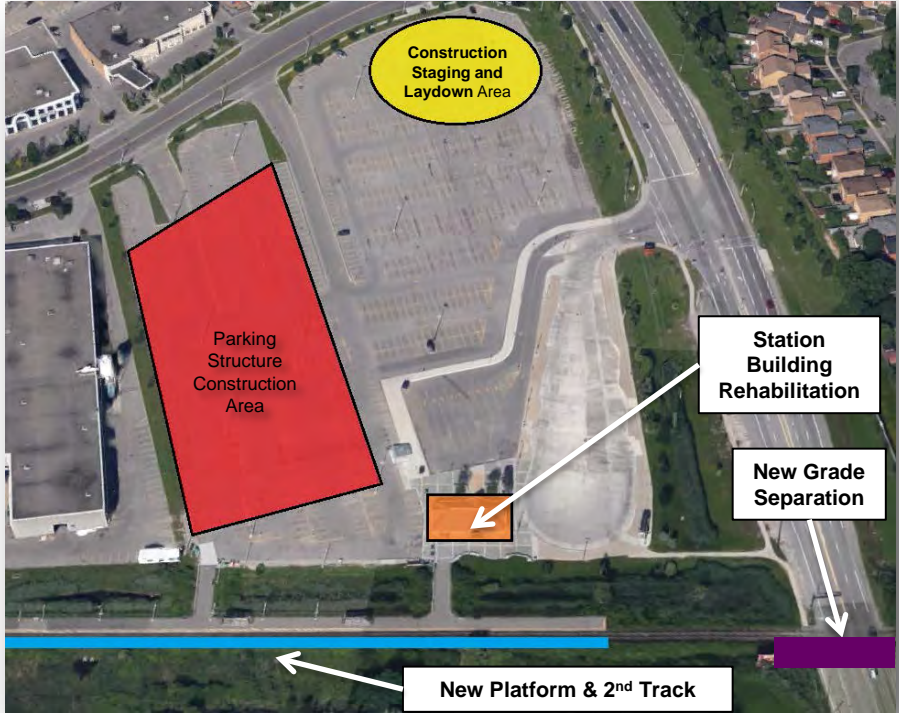
- New GO Stations are being incorporated into the RER program, including Kirby and Mulock in York Region
- Metrolinx, York Region, City of Vaughan, and Town of Newmarket are working together to refine the station concept plans prepared for New Station Initial Business Cases
- Planning for public consultation and environmental assessment underway

There will also be a number of modifications made at the following stations:

BARRIE: RUTHERFORD GO STATION

Scope	
Phase I	Pedestrian Tunnel Installation
Phase II	Grade Separation Station Building Rehabilitation 2nd Track & Platform New Multi-Level Parking Structure 1200 Net New Parking Spaces

Milestone Schedule	
Design/Phase I Construction	Aug 2016 - Aug 2017
Phase II Construction (DBF)	Jun 2018 - Dec 2022



BARRIE: MAPLE GO STATION

Scope

Phase I	2 Pedestrian Tunnels
Phase II	Multi-Level Parking Structure New Kiss & Ride Bus-Loop with 4 Bus Bays Bicycle Facilities 1200 Net Parking Spaces

Milestone Schedule

Tender Documents Issued	Jun 2016
Design Period & Procurement	Sep 2016 – Apr 2019
Construction Period (DBF)	Apr 2019 – Dec 2022

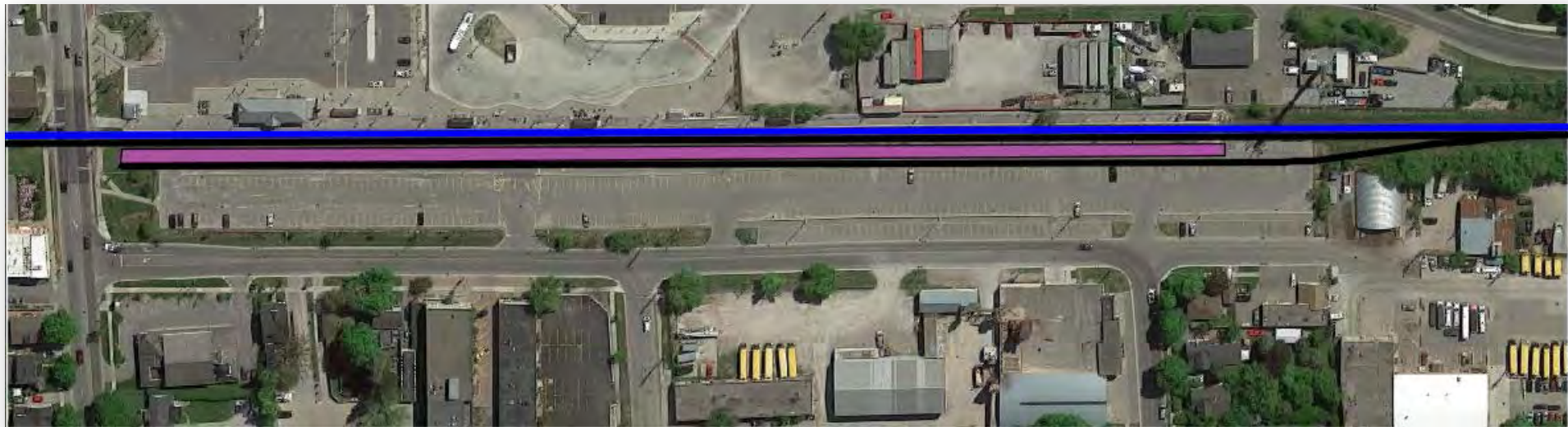


BARRIE: KING CITY GO STATION



Scope	Milestone Schedule	
Surface Parking	Prelim. Design Consultant Procurement	Aug 2016 – Jan 2017
New Kiss & Ride	Preliminary Design	Feb 2017 to Apr 2018
New Station Building	DBF Procurement	Apr 2018 to Apr 2019
Bicycle Facilities	Construction	Apr 2019 to Dec 2022
Pedestrian Bridges		
Approx. 500 Net New Parking Spaces		

BARRIE: AURORA GO STATION



Scope	
Phase I	Pedestrian Tunnels
Phase II	New 2 nd Platform Station Canopy Surface Parking

Milestone Schedule		
	Phase I	Phase II
Design	Jun 2015 - Feb 2016	Aug 2016 - Oct 2017
Procurement	Feb 2016 – Jun 2017	** Oct 2017 – Sept 2018
Construction	Jun 2016 – Mar 2017	** Sept 2018 – Sept 2021

BARRIE: EAST GWILLIMBURY GO STATION

Milestone Schedule

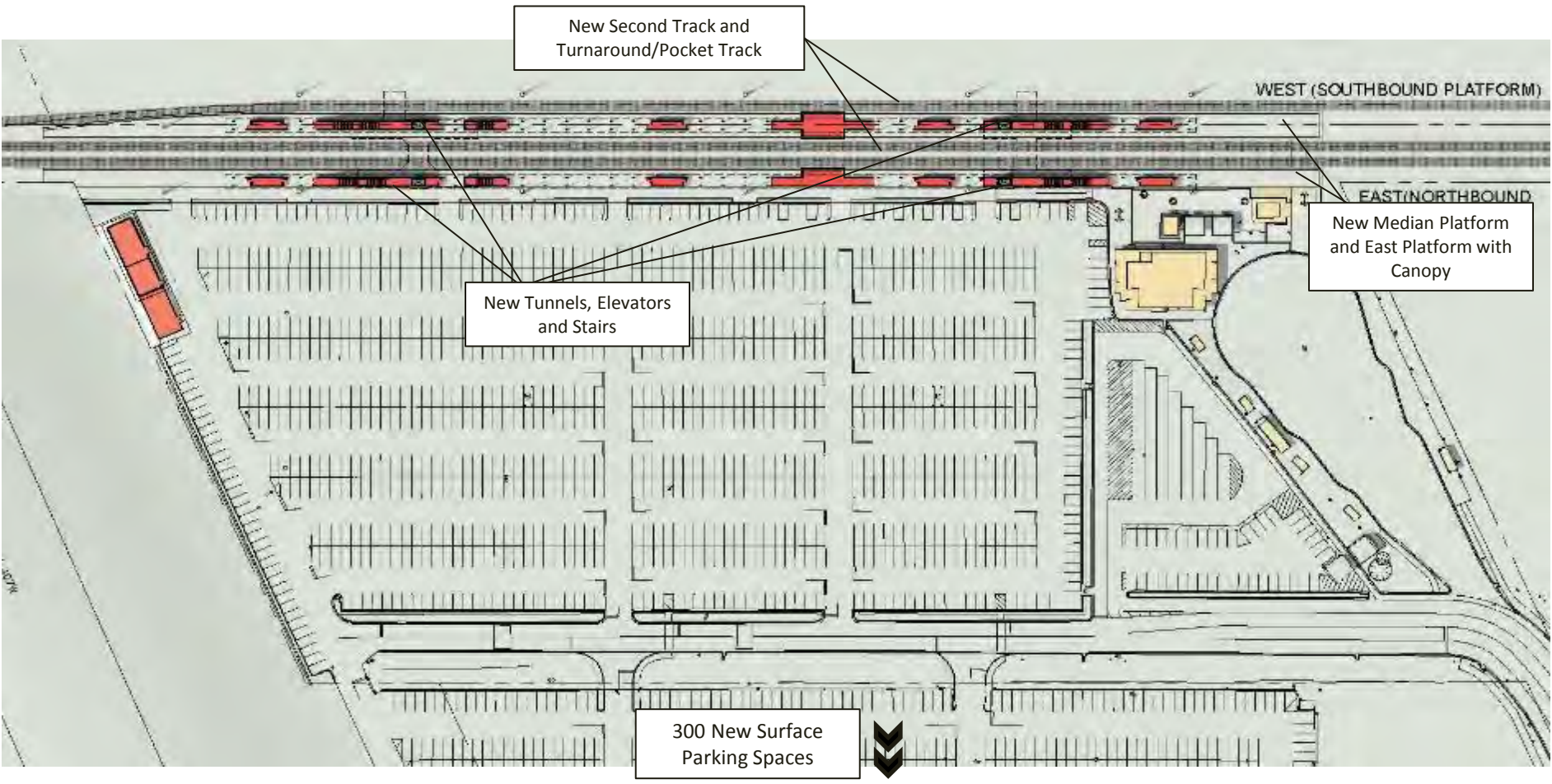
Design	Early 2017
Construction	2018 – Early 2019

Scope

Surface Parking Expansion



STOUFFVILLE: UNIONVILLE GO STATION



STOUFFVILLE: LINCOLNVILLE GO STATION

- Expansion of Lincolnville Layover Facility
 - Addition of 3 new storage tracks
 - Modification of associated platforms
 - Upgrades to associated, signal, electrical, and fueling systems
- Relocation of the Lincolnville GO Station
 - New east platform with canopy
 - New station building
 - New bus terminal
 - New kiss & ride
 - New parking lot
 - New access road(s) to 10th Line

RICHMOND HILL: RICHMOND HILL GO STATION

- Repaired and extended train platform to accommodate 12-car trains
- Added pedestrian bridge over Major MacKenzie Drive
- Upcoming construction of new station building providing better access to bus loop, kiss & ride, and parking lot

RICHMOND HILL: GORMLEY GO STATION

- Opened December 2016
- 850 parking spots
- 8 Heated shelters
- Bus loop
- Kiss & Ride



RICHMOND HILL: BLOOMINGTON GO STATION

- Construction started: February 2017



LEVEL CROSSINGS & GRADE SEPARATIONS

LEVEL CROSSINGS – ROAD/RAIL INTERSECTIONS

- With over 50 level crossings in York Region, they will continue to be a significant feature of the network.
- All level crossings on the GO network were assessed based on four criteria which included a number of components:

Usage and Existing Conditions (60%)

- Exposure Index (traffic and rail volumes)
- Geometry
- Accidents/Collisions
- Adjacent roadways and queuing

Social & Environmental (10%)

- Visual improvement
- Noise improvement
- Community connectivity

Operations (20%)

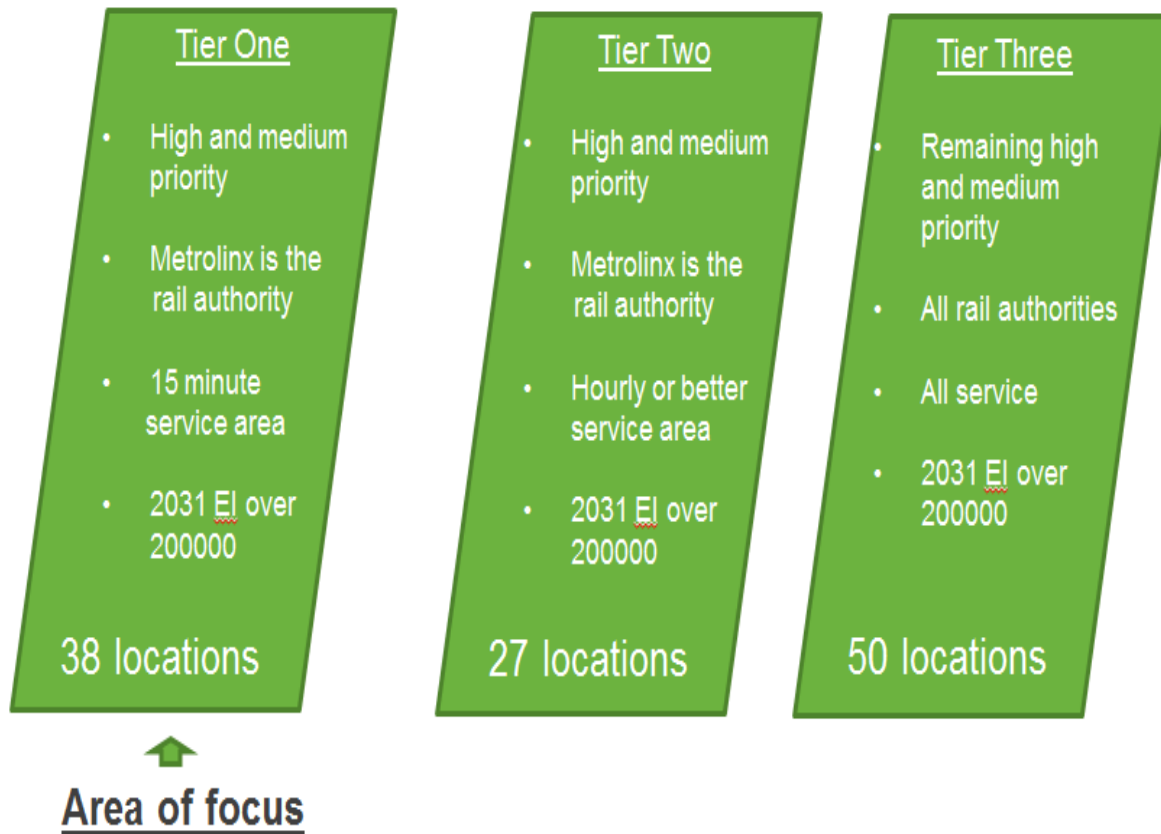
- GO Service improvements
- Special users (e.g. local transit, emergency services)
- Service reliability
- Station proximity

Cost (10%)

- Construction
- Property
- Maintenance

LEVEL CROSSINGS: SORTING REVIEW

Among high and medium priority locations, a tiered approach was adopted to inform prioritization and discussions with municipalities.

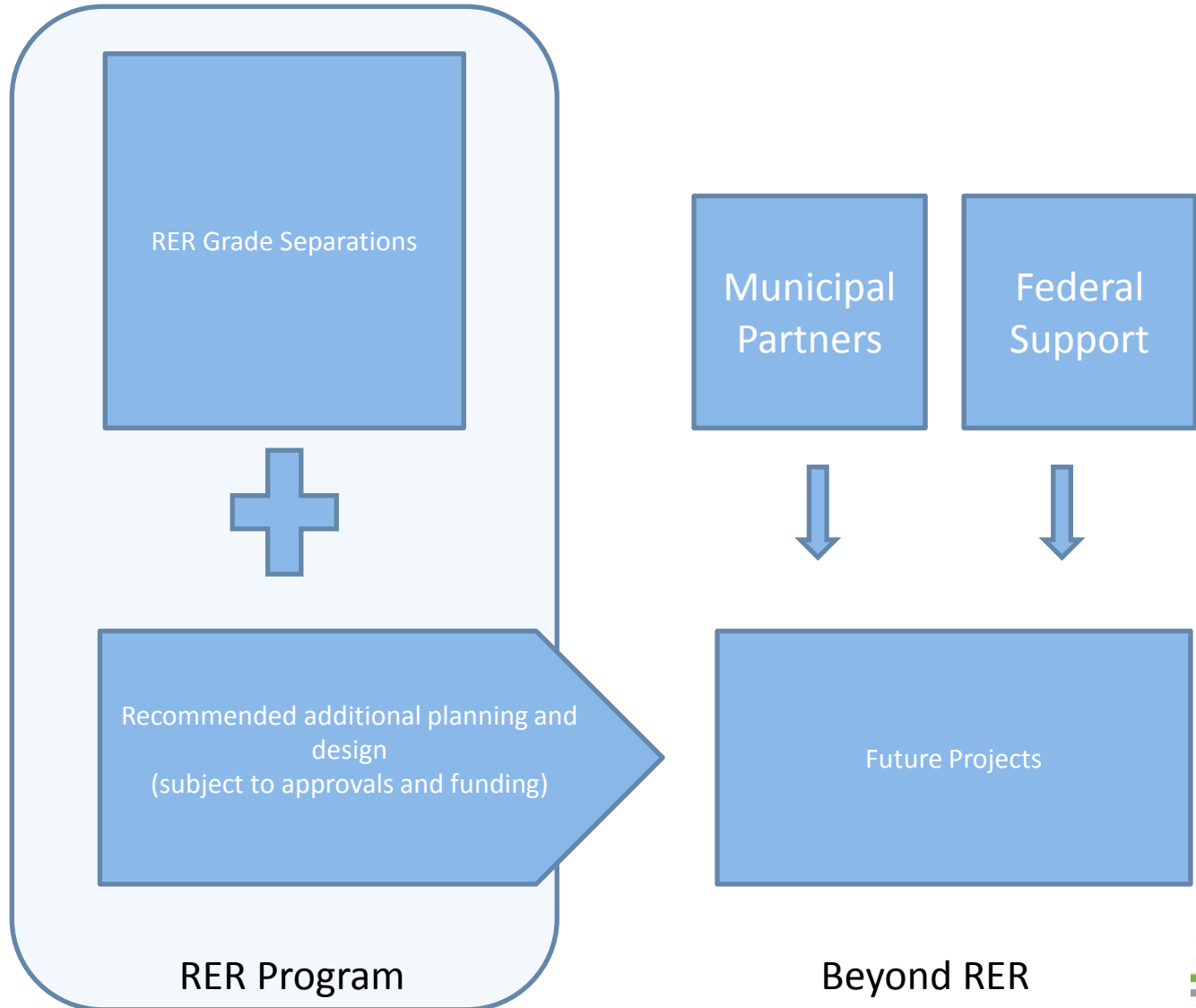


LEVEL CROSSINGS: LONG TERM PLAN

Metrolinx will continue to work with municipal counterparts to plan for and advance grade separations where possible.

Metrolinx recommends a longer term plan be considered beyond the current program to move additional projects forward through planning and design, subject to approvals and funding.

This would allow for continued progress on a pipeline of locations not proceeding immediately as part of this RER program.



RESULTS: LEVEL CROSSINGS IN YORK REGION

Four proposed grade separations:

- **Rutherford Road:** adjacent to station, EA completed by York Region, planning underway, highest overall EI forecast on GO network.
- **Wellington Street East:** adjacent to station, heritage elements to be considered.
- **McNaughton Road:** adjacent to station.
- **Steeles Avenue East:** adjacent to station, EA underway by City of Toronto

NEXT STEPS: LEVEL CROSSINGS

- Study to identify recommended improvements for at-grade crossings
 - Municipal input will be part of this exercise
- Launch region-wide Community Advisory Committee
- Grade Separation Projects:
 - Finalize municipal agreements
 - Complete or initiate Environmental Assessment as required
- Enhanced Safety and Education Awareness

COMMUNITY ENGAGEMENT

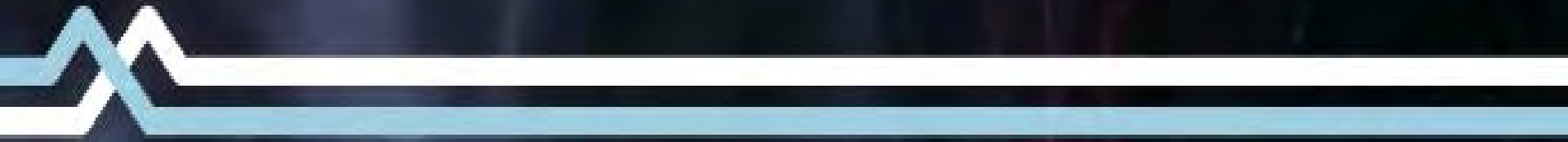
COMMUNITY ENGAGEMENT: PROJECT CYCLE



METROLINX COMMUNITY CHARTER

- Currently developing a Community Charter that will define Metrolinx's relationship with residents and communities through a series of promises and service standards.
- The Community Charter commits Metrolinx to building the regional transportation system we all want and need but in a way that is respectful of the communities it touches.
- We need your input. Logon to [MetrolinxEngage.com](https://www.metrolinx.com/en/eng/engage) to participate.





As our region grows our transit system needs to grow too.

Let's get moving.