



Wrap-up Meeting

B.3 Proposed York Region Seniors Strategy- Overview

Presentation to

Seniors Strategy Advisory Task Force

Lisa Gonsalves, Director, Strategies & Partnerships

Monica Bryce, Head of Strategic Initiatives,

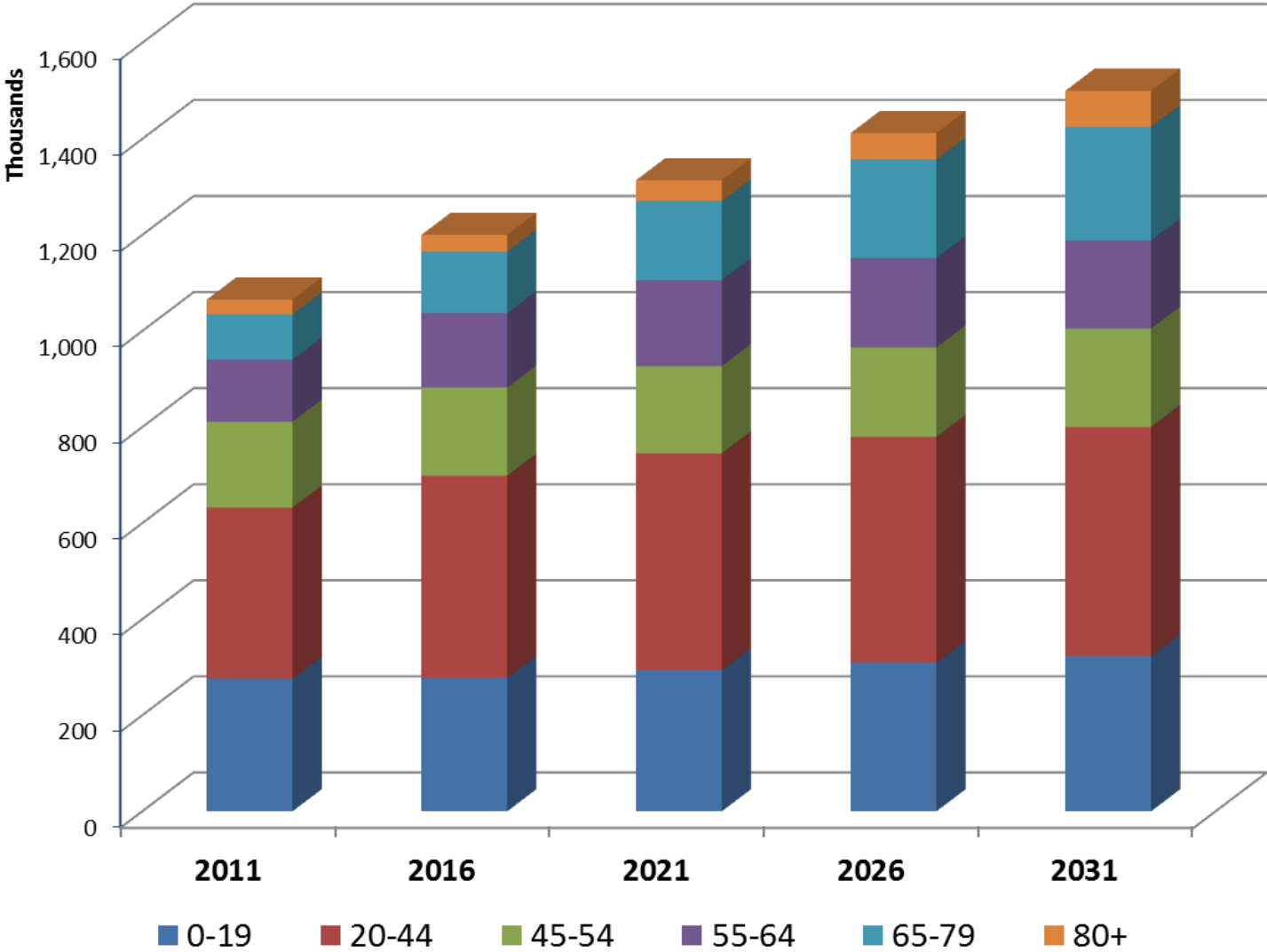
Commissioner's Office, CHS

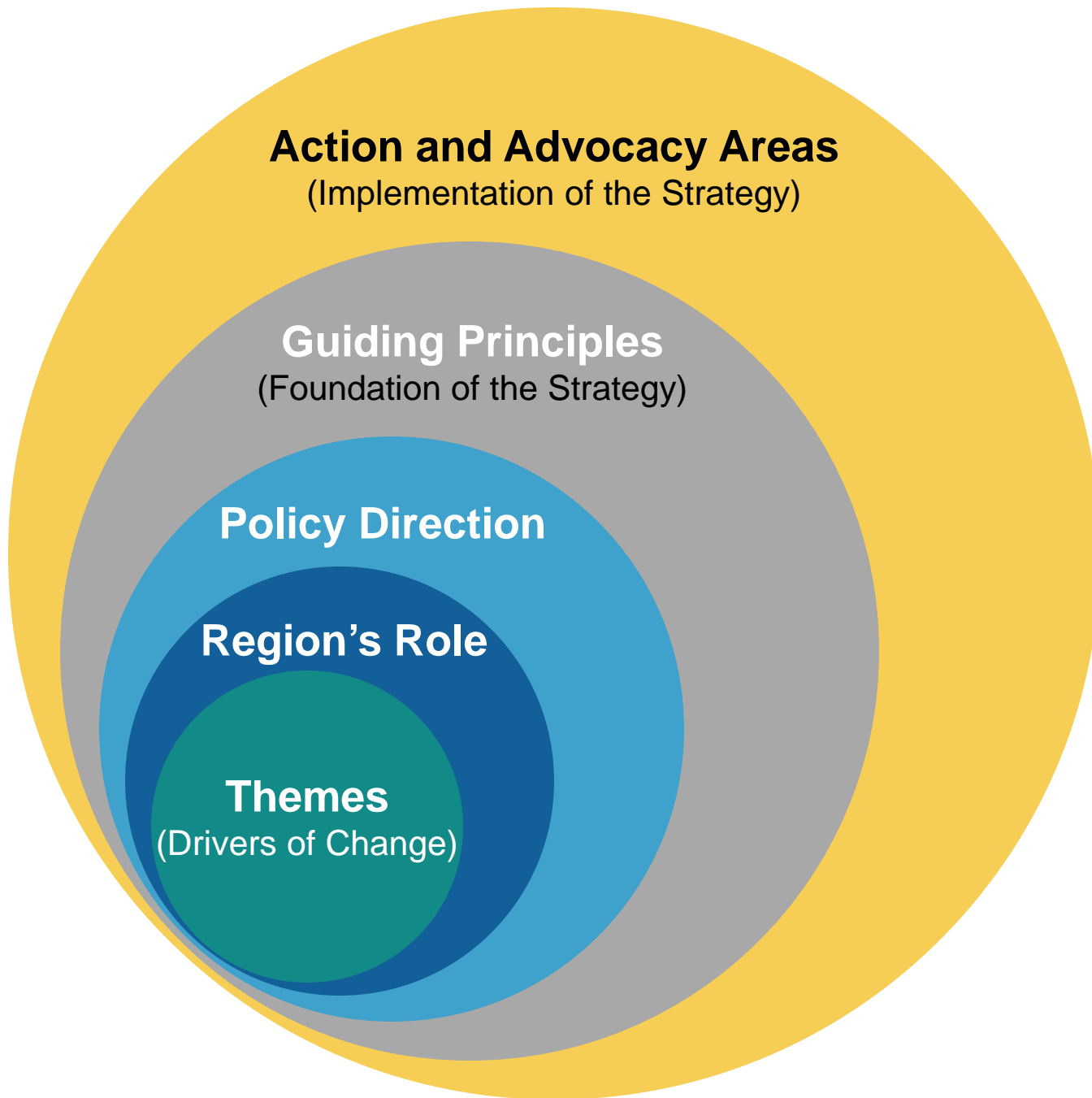
October 5, 2016

York Region is in a good position to support the growing, aging population

- *Regional Official Plan* - building complete, vibrant, walkable communities
- *AODA* – committed to meeting the accessibility needs of people with disabilities
- Keeping seniors connected- transportation options including *dial-a-ride*
- *Access York* - one window to *access to service*
- Responsive paramedic services - *Community Paramedicine*
- Strong long-term care and seniors community programs (*i.e. adult day programs, psychogeriatric outreach*)
- *Public Health falls programs, age friendly communities pilot and Healthy Aging Working Group*
- *Environmental Services - Accessible trails*

Aligning Implementation with the Wave





Action and Advocacy Areas
(Implementation of the Strategy)

Guiding Principles
(Foundation of the Strategy)

Policy Direction

Region's Role

Themes
(Drivers of Change)

Theme: Broad Policy and Finances

What We Heard

- Growth across all age groups
- Increased demand on services and infrastructure
- Limited resources available
- Help those who need it most
- Many seniors and baby boomers are financially stable
- Portion of seniors living on low income is increasing at fastest rate
- Working age adults make up largest portion of low-income population
- Programs and services must be fiscally sustainable



Proposed Role:

Balance the needs of seniors with all residents

Theme: Health

What We Heard

- Most complex 10% of older adults (multiple chronic conditions, social frailty and functional impairment) account for 60% of health care spending
- Age related changes are normal
- Falls are the leading cause of injuries for seniors
- Increased demands on paramedic services linked to growing number of older seniors
- Target prevention and promotion (encourage healthy choices and behaviours; self care)
- Match response and resources to the situation
- Need to align with the broader system of care to be most effective (we are only one player)



Proposed Role:
Keep seniors healthier; longer

Theme: Aging in Place

What We Heard

- There will be no funding for new institutional long term care beds
- Future Provincial funding will focus on home and community care models; beefed up adult day programs, congregate living; and long term care in the community
- Existing long term care beds will only be for the most complex cases
- Seniors prefer to age in place
- Need for affordable housing for seniors
- Need for a variety of housing options for seniors to age in place, including rental
- Need better integrated services to respond to seniors needs holistically



Proposed Role:
Support age friendly complete communities

Theme: Staying Safe and Connected

What We Heard

- Design communities that foster social and physical connectivity
- Reduce likelihood of social isolation
- More convenient transportation options for seniors
- Staff, seniors and caregivers require guidance to connect to the right services
- Police are spending expensive resources and time assisting seniors/caregivers with non-emergency/non-criminal 911 calls and making referrals
- Need for joint planning to ensure the right programs are available at the right times
- Work together as a system to keep seniors connected to the programs and services they need



Proposed Role:

**Connect seniors/caregivers to the right programs
and services at the right times**

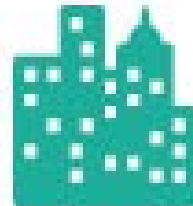
What is the Region's Proposed Role in Serving Seniors?



Balance the needs of seniors with all residents



Keep seniors healthier; longer




Support age friendly complete communities




Connect seniors/caregivers to the right programs and services at the right times


Actions and Advocacy Areas

Role	ACTION AREAS	Link to Primary Guiding Principle
 <p>Balancing the needs of all residents</p>	<p>ABILITY TO PAY ELIGIBILITY MODEL (S)</p>	
	<ul style="list-style-type: none"> • Eligibility models that look at income, assets, user fees, collateral interest loans, private contributions (e.g. Home Repair Program) • Communication campaign i.e. preparing for retirement; ability to pay model 	<p>Fiscal Sustainability & Balance</p>
	<ul style="list-style-type: none"> • Development of a decision making tool for applying the strategy to programs and services 	<p>Evidence Based Decision Making</p>
	<p>ADVOCACY AREAS</p>	
	<p>Seniors Basic Needs</p> <ul style="list-style-type: none"> • Income Supports • Dental Benefits • Expanded Pharma care 	<p>Fiscal Sustainability & Balance</p>


Actions and Advocacy Areas

Role	ACTION AREAS	Link to Primary Guiding Principle
 <p>Keep seniors healthier; longer</p>	CAPACITY PLANNING	
	<ul style="list-style-type: none"> At a system level, understand what programs and services are required to support seniors to age in place and the capacity to deliver 	Evidence-based decision-making
	<ul style="list-style-type: none"> Expand existing prevention programs and identify new programs required, including alternatives for those on waitlists 	Prevention and Promotion
	<ul style="list-style-type: none"> Engage the business/ industry sector to identify new business opportunities; i.e. new technology, data solutions; wellness checks 	Partnerships, alignment and collaboration
	ADVOCACY AREAS	
	<ul style="list-style-type: none"> Expand Public Health prevention mandate for seniors 	Prevention & Promotion
	<ul style="list-style-type: none"> Improve planning for long term care beds by developing a forecast for York Region including required number, type and location 	Evidence based decision-making
	<ul style="list-style-type: none"> Increase home and community care supports available in York Region i.e. homecare, adult day programs, respite 	Evidence based decision –making


Actions and Advocacy Areas

Role	ACTION AREAS	Link to Primary Guiding Principle
 <p>Support age friendly complete communities</p>	BETTER INTEGRATED SERVICES	
	<ul style="list-style-type: none"> • Explore with others to Integrate services in senior hub model (s) • Explore with others to co-locate services 	Partnerships
	<ul style="list-style-type: none"> • Participate in specific Transit related discussions to enhance accessibility and choice 	Partnerships
	<ul style="list-style-type: none"> • Coordinate community outreach activities internally and with York Regional Police 	Partnerships
	ADVOCACY AREAS	
	<ul style="list-style-type: none"> • Funding for home and community care services is available to support seniors in York Region Social Housing Buildings, Homes with Support programs 	Partnerships

Actions and Advocacy Areas

Role	ACTION AREAS	Link to Primary Guiding Principle
 <p>Support age friendly complete communities</p>	<p>AGE FRIENDLY COMPLETE COMMUNITIES</p> <ul style="list-style-type: none"> • Establish Internal joint planning table to explore the age- friendly community concept • Establish external joint planning table • Reduce complexities and costs associated with second suites • Leverage inclusionary zoning • Develop a variety of housing options including rental • Develop a variety of transportation options • Implement a communication campaign 	<p>Partnerships</p>
	<p>ADVOCACY AREAS</p>	
	<ul style="list-style-type: none"> • Infrastructure funding for housing services and a variety of housing options, including rental i.e. affordable retirement home, congregate living options 	<p>Partnerships</p>

Actions and Advocacy Areas

Role	ACTION AREAS	Link to Primary Guiding Principle
 <p>Connect seniors/caregivers to the right programs and services at the right times</p>	CONNECTING SERVICES TO SENIORS	
	<ul style="list-style-type: none"> • Explore single point access for information including a self-serve option 	Partnerships
	<ul style="list-style-type: none"> • Guided system navigation options i.e. one-on one-support models; care planning 	Partnerships
<p>Training</p> <ul style="list-style-type: none"> • Outside workers to identify warning signs of senior distress (including local municipal staff); • Age Sensitivity Training (all staff); • Care for elderly with complex care needs (staff working with seniors) 	Education	
	ADVOCACY AREAS	
	<ul style="list-style-type: none"> • Funding to assist with system navigation 	Partnerships

Ready for the future

Creating a 'Place where everyone can thrive';

- Leveraging funding opportunities
- Proactively contributing to systemic changes
- Investing in the right programs and services at the right time for the right people

Recommendations for Committee of the Whole (Nov 3, 2016)

- Council approve the York Region Seniors Strategy
- The Regional Clerk circulate this report to the local municipalities; York Region Members of Parliament and Members of Provincial Parliament; the Central Local Health Integration Network; the Provincial Government through the Ontario Seniors' Secretariat and the Ministries of Health and Long-Term Care, Housing, Municipal Affairs and Transportation; the Federal Government through Employment and Social Development Canada; and, the Public Health Agency of Canada.

Strategy Development



Quest

What is York Region's role in serving seniors over the next 10 to 20 years –

making the best use of resources, managing expectations, leveraging partnerships and responding to provincial direction?

