



June 29, 2016

Mr. Brian Titherington
Director, Roads and Traffic Operations
Regional Municipality of York
17250 Yonge Street
Newmarket, On L3Y 6Z1
Email: brian.titherington@york.ca

RE: NINTH LINE TRUCK RESTRICTION (5.10)
Presentation Briefing Note

Dear Mr. Titherington:

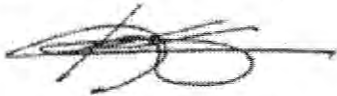
This will confirm that at a meeting held on June 28, 2016, Council of the City of Markham adopted the following resolution:

- "1) That the briefing note dated June 16, 2016 from York Region be received; and,
- 2) That the written submission from Eira Keay, Norm and Dianne Pemberton, Jamie Taylor, Joanne Jackson, and Phil Diamond, regarding Ninth Line Truck Restrictions, to the Development Services Committee on May 24, 2016, be received; and,
- 3) That the presentation provided by Brian Titherington, Director, Roads and Traffic Operations, Region of York entitled "Ninth Line Truck Restriction" to the Development Services Committee on May 24, 2016 be received; and,
- 4) That the truck ban from Highway 7 and 16th Avenue be re-instated and the section of Ninth Line between Highway 7 and Highway 407 also include a truck ban; and,
- 5) That any signs that have been removed stating truck route be re-installed; and,
- 6) That any future development along Donald Cousens Parkway require that developers include a clause of caution of possible noise and heavy volume of traffic in their purchase agreements; and,

- 7) That the Markham's Regional Councillors bring this back to the Region and support the truck ban on Ninth Line and re-iterate that the Donald Cousens Parkway is Markham's by-pass, and it should be used for what it was intended for.

If you have any questions, please contact Alan Brown, Director, Engineering, at 905-477-7000 ext.. 7507.

Yours sincerely,



Kimberley Kitteringham
City Clerk

Copy to: Denis Kelly, Regional Clerk



York Region Briefing Note

Subject: Ninth Line Truck Restriction

Date: June 16, 2016

Prepared for: Alan Brown, City of Markham

Copy to: Nelson Costa, York Region

Prepared by: Brian Titherington, York Region

Department: Transportation Services

Branch: Roads & Traffic Operations

In 2015 York Region removed a truck restriction on Ninth Line between Highway 7 and 16th Avenue in the City of Markham.

In discussing the truck restriction removal, the City of Markham is seeking additional information from York Region. The questions as well as the answers are included below.

1. Number of violations issued during the truck restriction?

York Region Police do not release the number of enforcement charges for violating truck restrictions. The majority of charges are for disobeying an official sign; however, they do not break down how many of the disobeying an official sign charges relate to commercial motor vehicles.

2. What is the York Region definition of a truck?

As per the "By-law to Prohibit Heavy Trucks on Regional Roads" a "heavy truck" means a commercial vehicle having a weight, when unloaded, of three tonnes or more, or, when loaded, of five tonnes or more, but does not include a passenger vehicle, an ambulance or any vehicle of a police or fire department.

Exceptions include any vehicle actually engaged in making a delivery to or a collection from local premises, public utility vehicles or vehicles actually engaged in works undertaken by or on behalf of York Region or an area municipality.

3. How is the enforcement done for the truck restriction (e.g. police patrolling in the area)?

Officers in Markham (5 District) are responsible for enforcement of any truck restrictions in their District. They are supported by Commercial Vehicle Safety officers from the Traffic Bureau.

4. Can York Region provide a detour for the trucks to use, other than Ninth Line?

There are five major objectives of the Region's most recent Transportation Master Plan. As part of Objective 4 (Maximize the Potential of Employment Areas) the plan notes that all Regional roads are intended to carry trucks, and are part of the general goods movement network. That said, the direct connection of Donald Cousens Parkway to Highway 48 is identified to be in place in the 10 to 15 year horizon. The direct connection will mean that vehicles travelling north or south on Highway 48 would end up on Donald Cousens Parkway unless they turned at an intersection. This would also take these vehicles across Ninth Line unless a turn movement was made at the intersection. This would be similar to how vehicles travelling on Woodbine Avenue get directed to the Woodbine Bypass unless they turn at the intersection to access the old Woodbine alignment.

Ninth Line Truck Restriction

Presented to

City of Markham

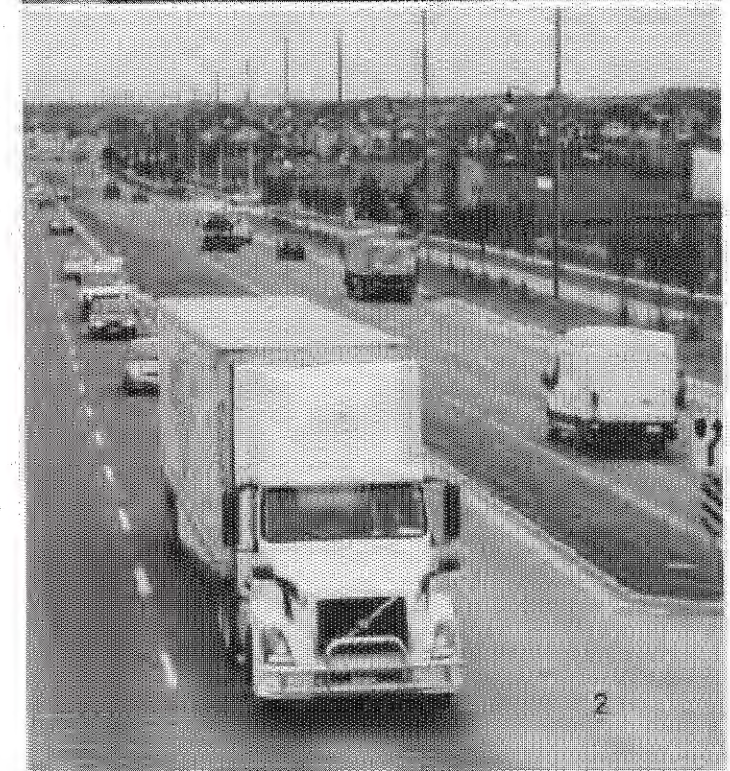
Development Services Committee

Tuesday, May 24, 2016



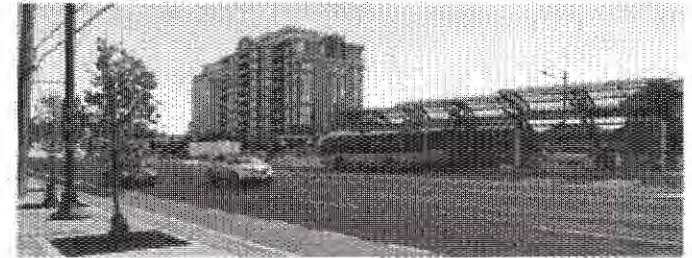
Outline

- Goods movement is important to the Region's economy
- Ninth Line was improved to accommodate all modes
- Goods movement needs to be balanced across the network
- Goods movement is constrained in Markham
- Regional Council decision



Goods movement is important to the Region's economy

- Goods movement supports the Region's industries, employment and quality of life
- Needs to be supported on all Regional roads
- Promoting equal distribution of all modes
- New Transportation Master Plan more clearly supports an equal distribution of all modes on all roads
 - www.york.ca/tmp

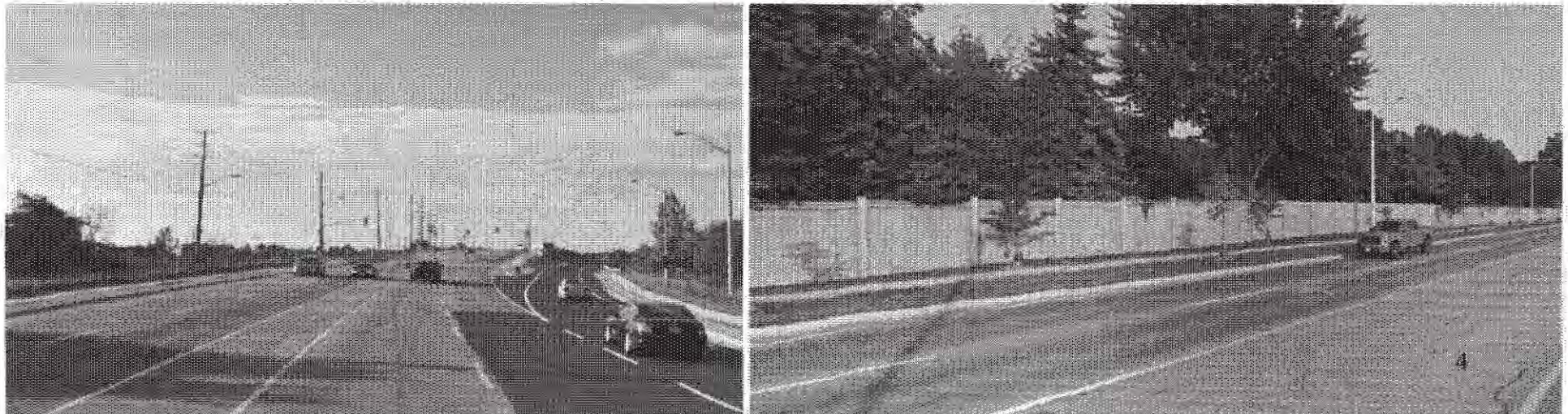


The Regional Municipality of York
Transportation Master Plan



Ninth Line was improved to accommodate all modes

- Road widened to 4 lanes with sidewalks and street lights
- Noise barriers were constructed to reduce noise levels
- Provides a key connection to a Provincial goods movement corridor
 - Highway 407



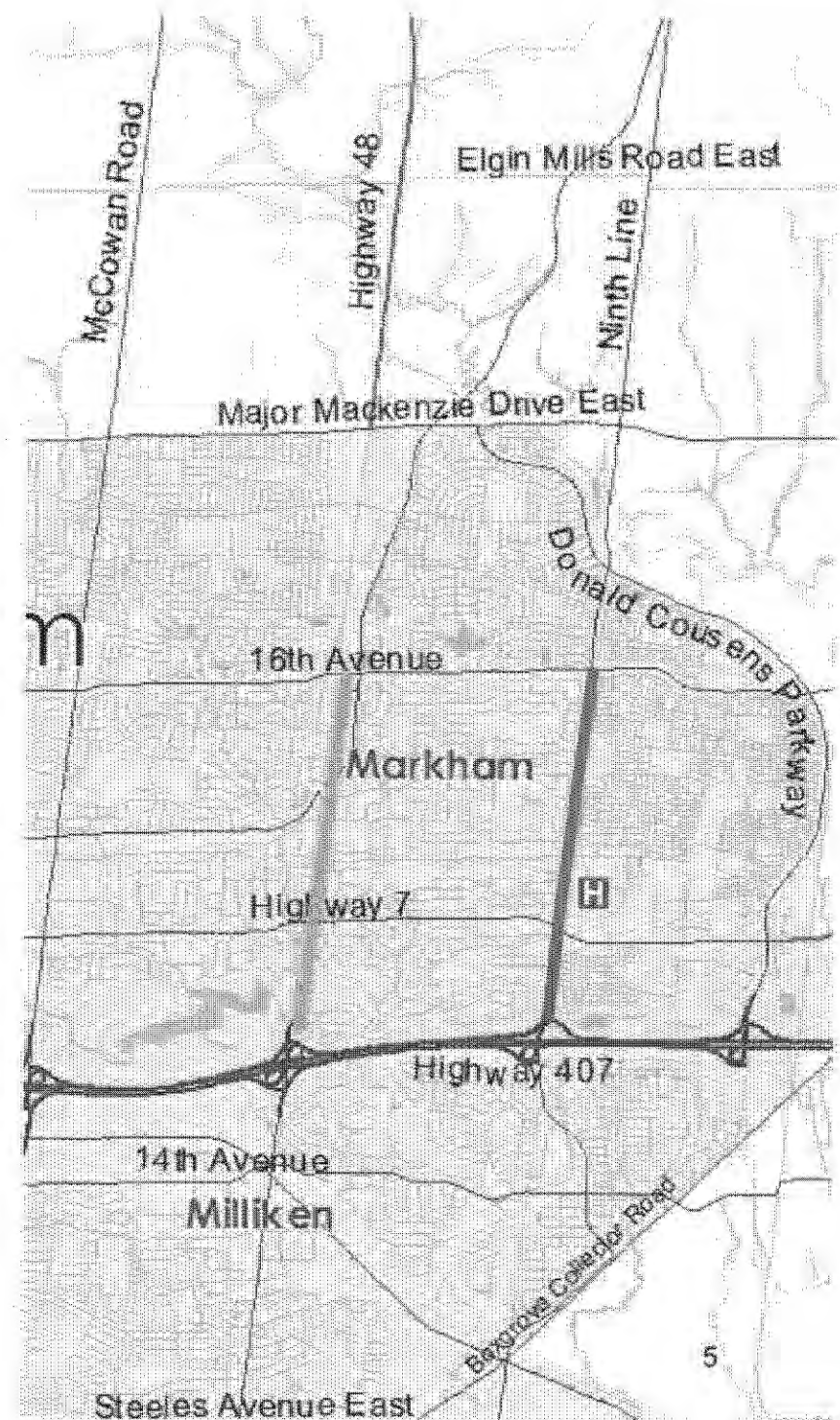
Goods movement needs to be balanced across the network

Ninth Line Residents

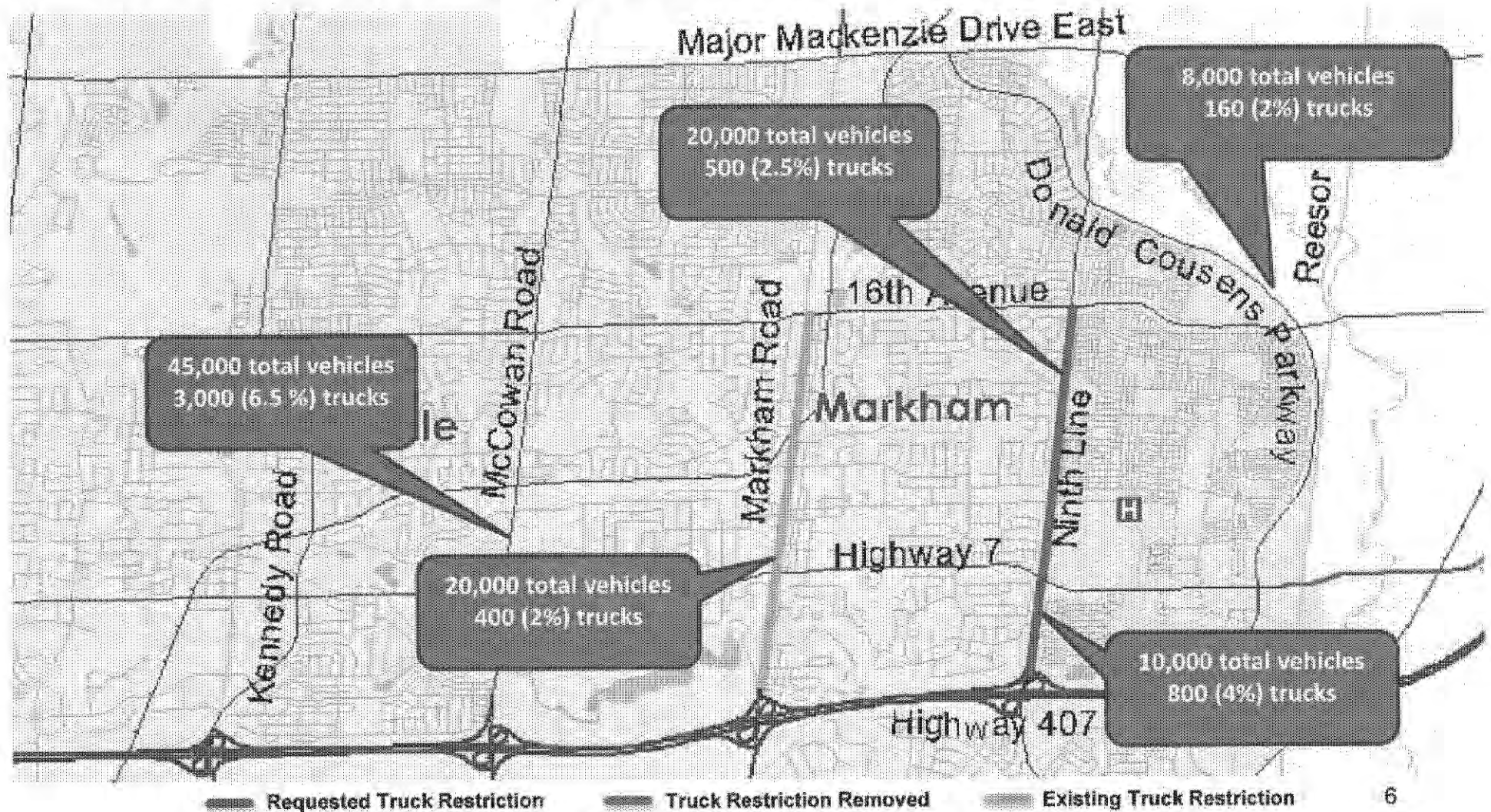
- Request to extend truck restriction on Ninth Line between Highway 7 and Highway 407

Other Markham Residents

- Truck volumes and noise
- Truck restriction on Ninth Line impacting quality of life for others



Goods movement is already constrained in Markham



Regional Council decision

In September 2015, Regional Council adopted the following:

1. A truck restriction not be implemented on Ninth Line between Highway 7 and Highway 407
2. The existing truck restriction on Ninth Line between 16th Avenue and Highway 7 be rescinded
3. The existing “Truck Route” signs on Donald Cousens Parkway be removed

Left turn lane Ninth Line at Fincham Avenue and Ninth Line at White's Hill Avenue

Ninth Line at Fincham Avenue



Ninth Line at Tiers Gate/White's Hill Avenue

