

# 2016 10-Year Roads Capital Construction Program Update

Transportation Services Presentation to  
**Committee of the Whole**

**Salim Alibhai**

October 6, 2016



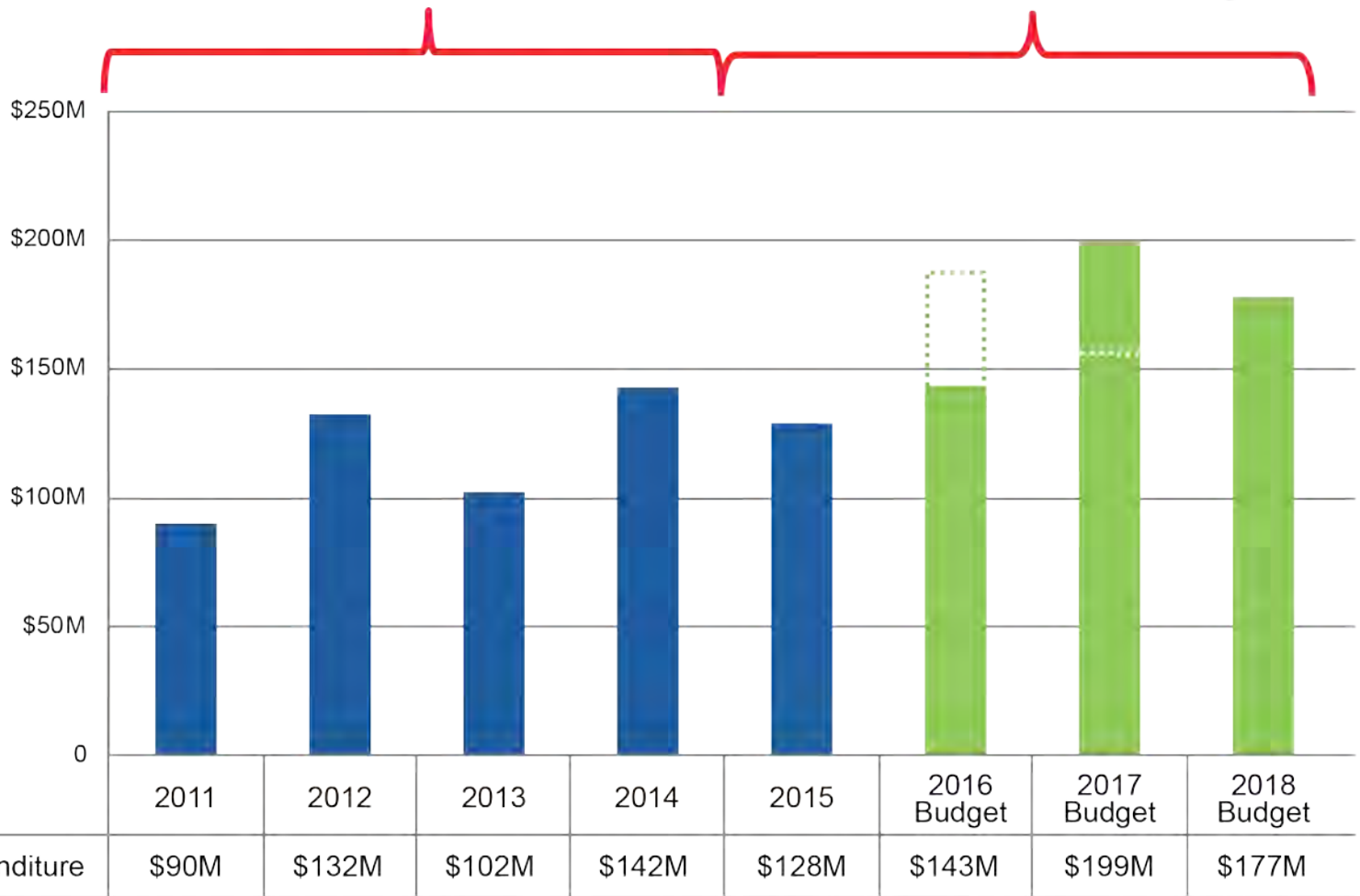
# \$1.5 Billion 10-Year Roads Capital Investment



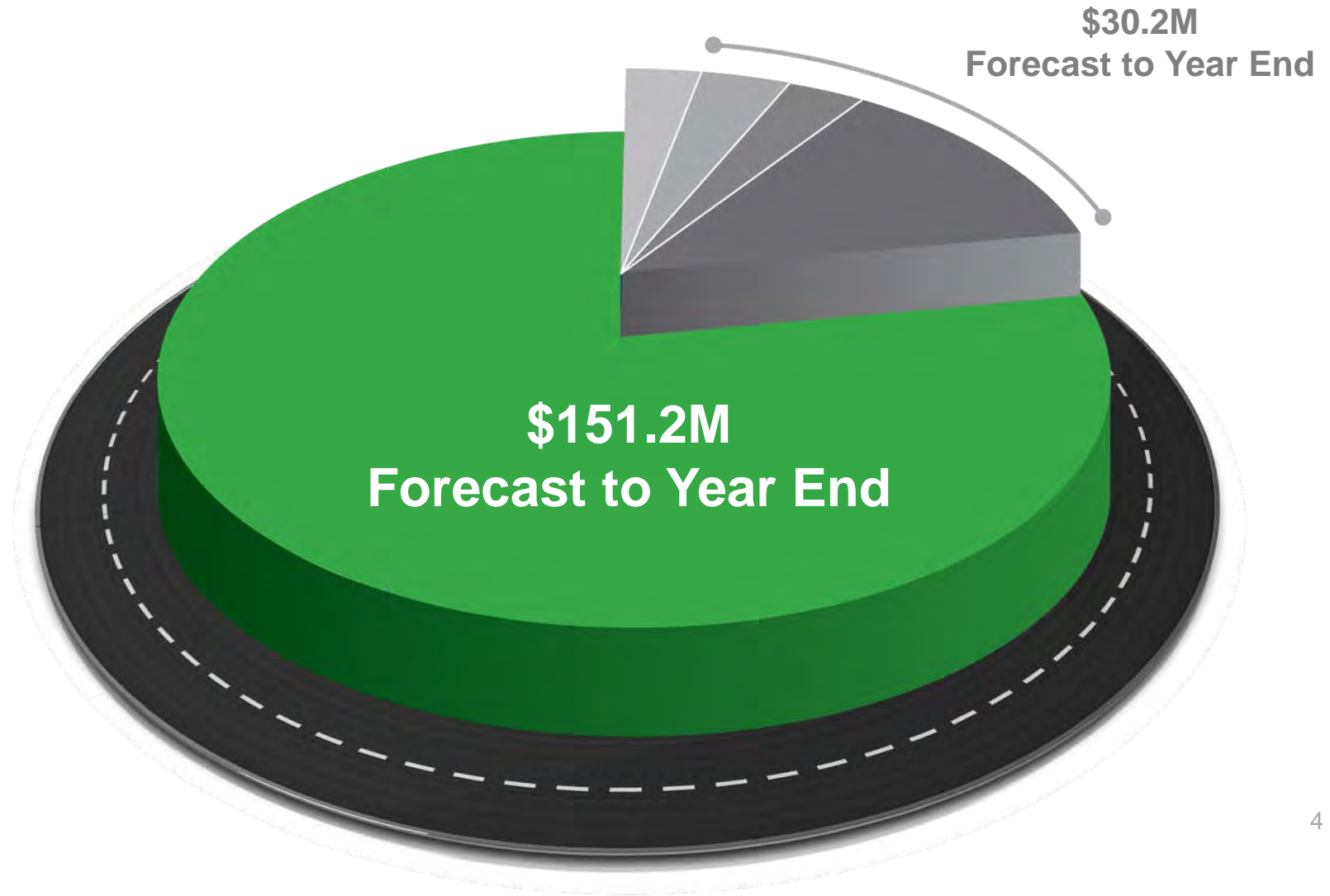
# Roads Capital Investment 2011 to 2018

Total of \$475 Million Actuals

Total of \$635 Million Budget



# 2016 Growth Program



# Growth Program

Planning

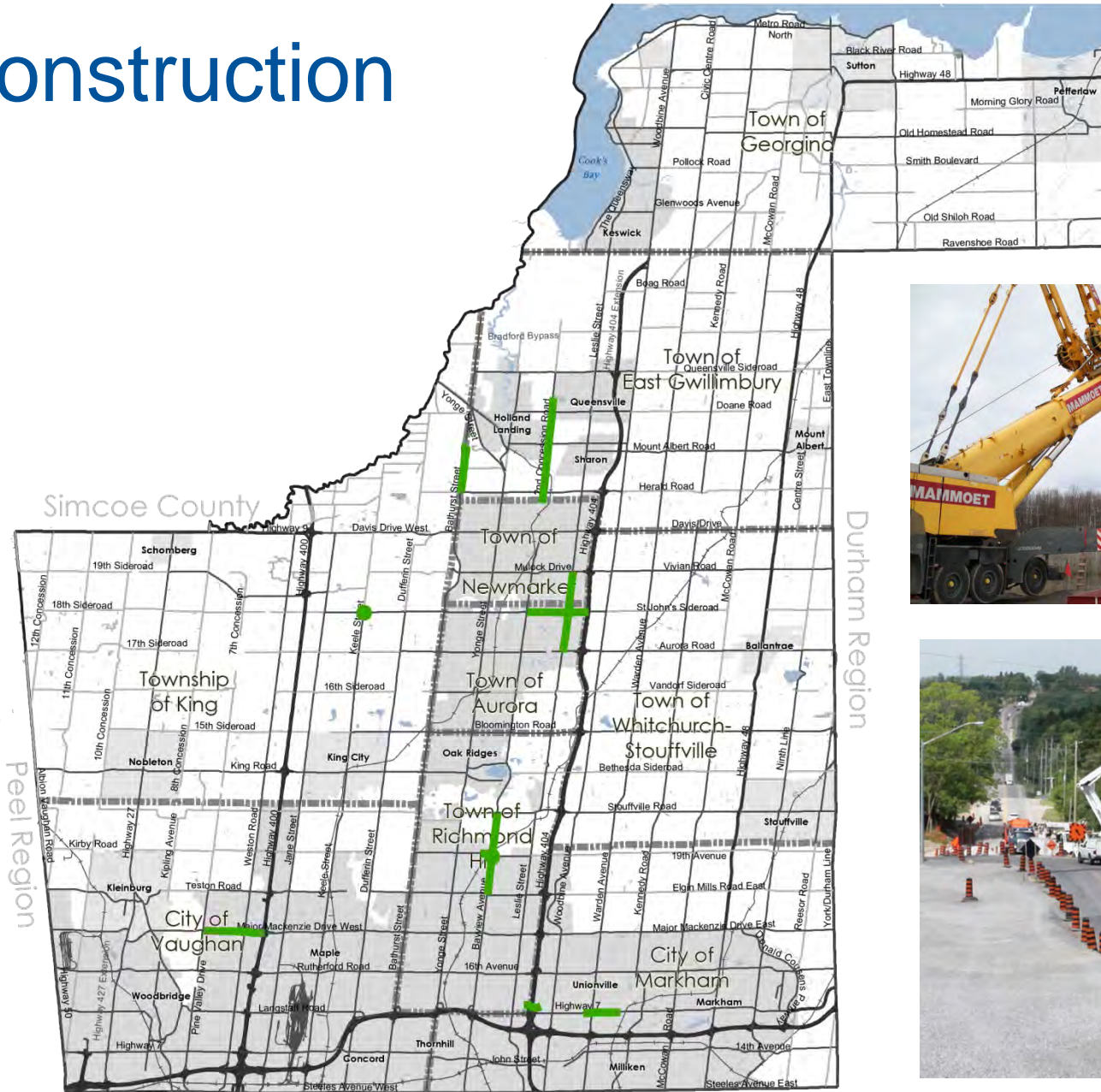
Environmental  
Assessment

Detailed  
Design

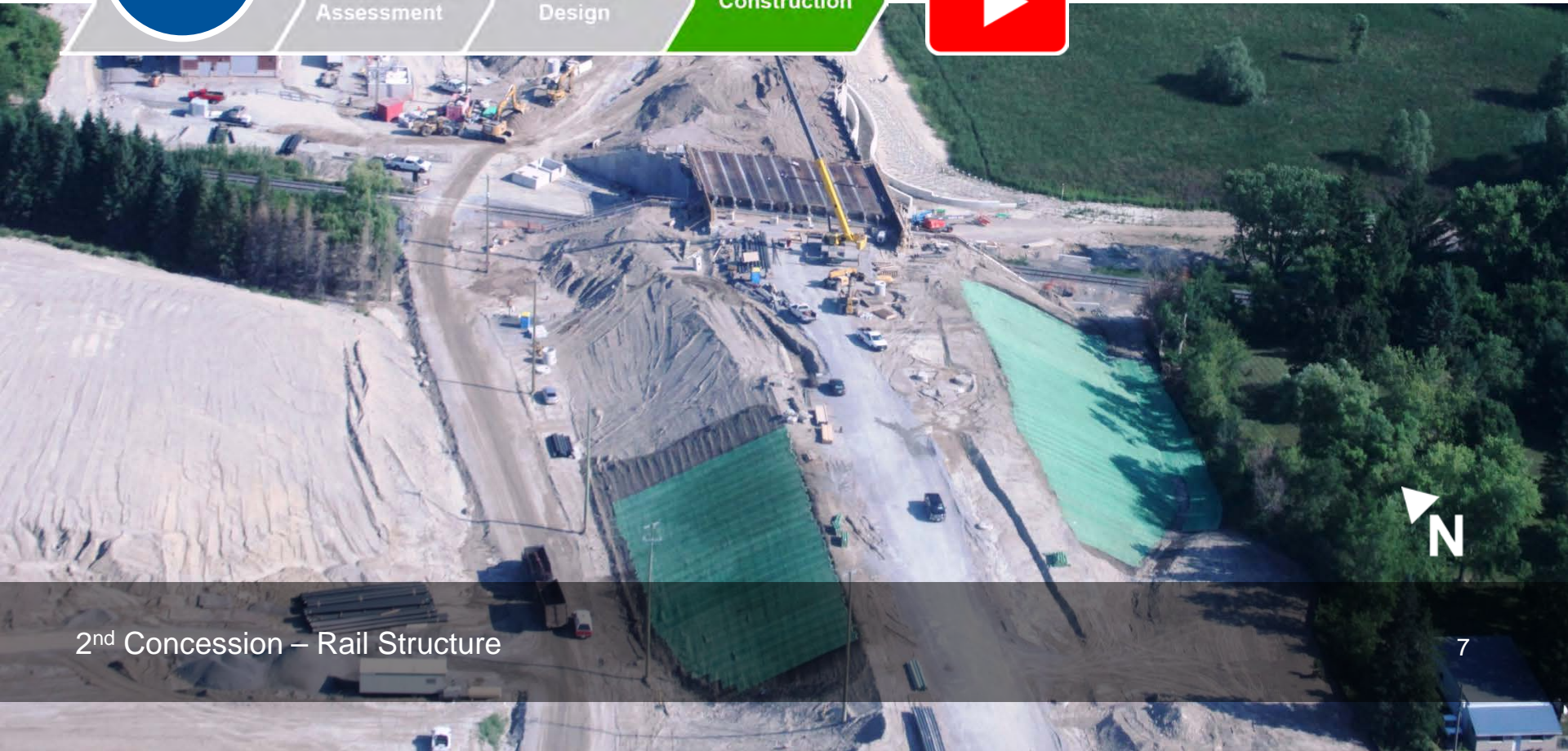
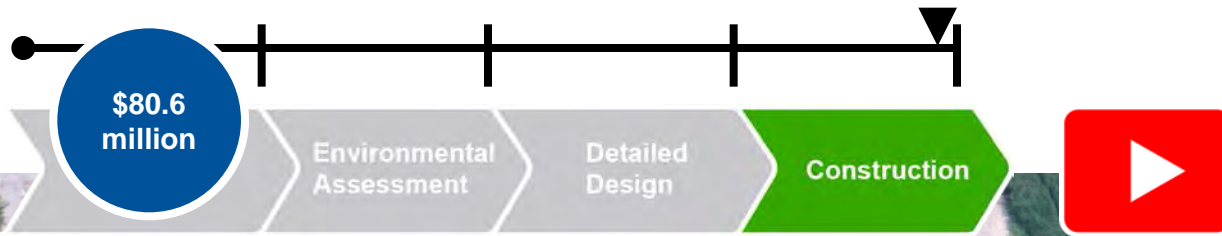
Construction



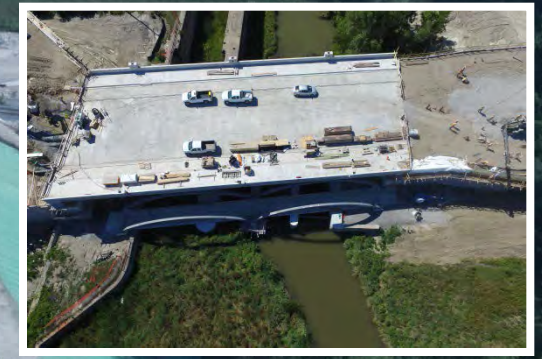
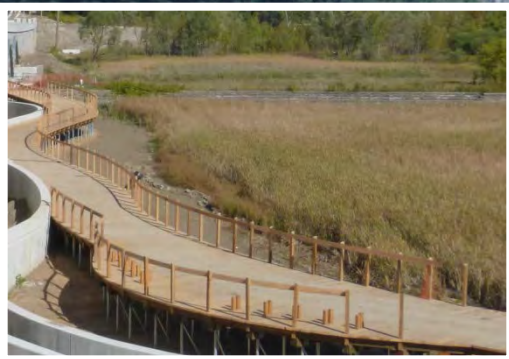
# Construction



# 2<sup>nd</sup> Concession/Main Street North Bristol Road to Queensville Sideroad



2<sup>nd</sup> Concession – Rail Structure

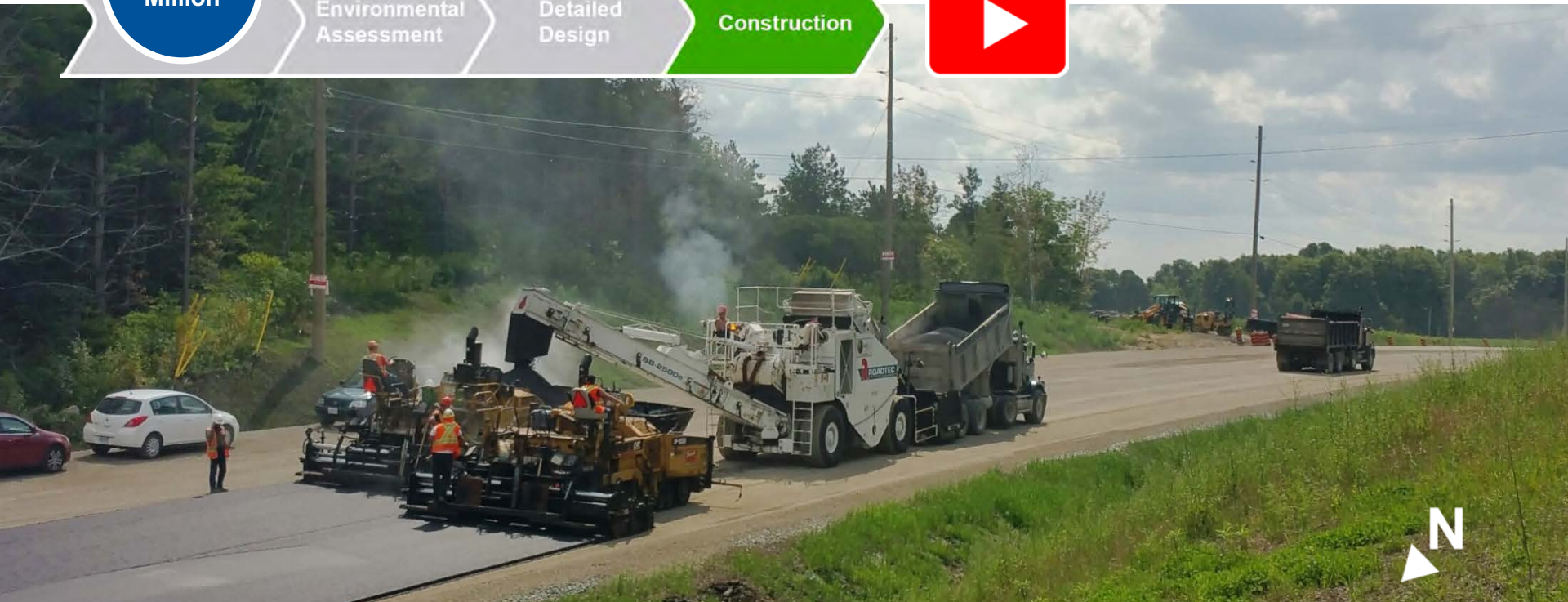
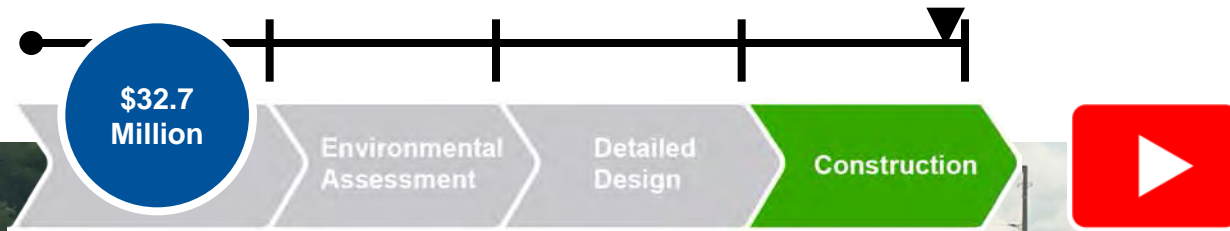


2<sup>nd</sup> Concession/Main Street North  
Bristol Road to Queensville Sideroad



# Bathurst Street

## Green Lane to 1km north of Morning Sideroad



Bathurst Street – Asphalt Paving

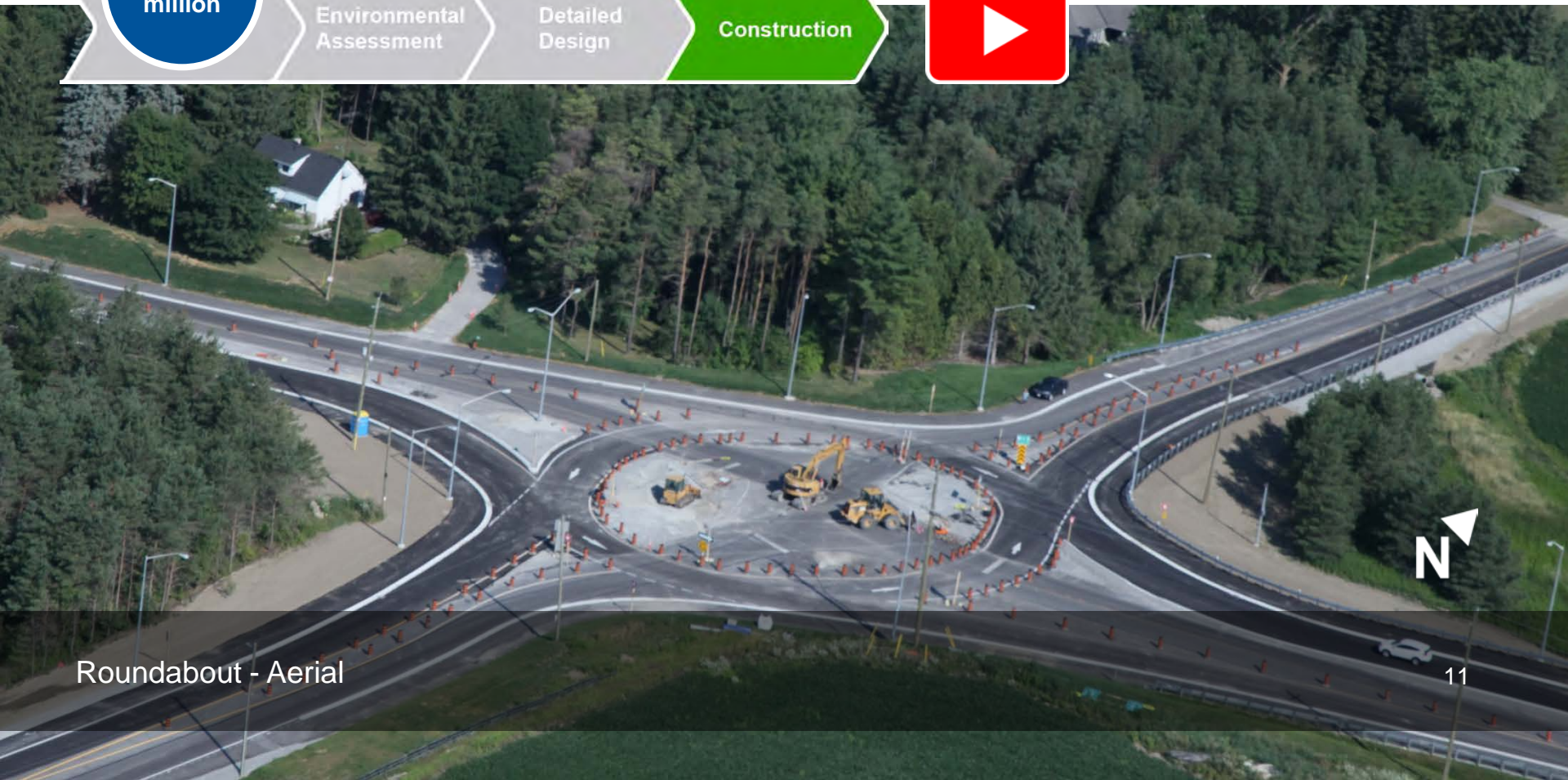
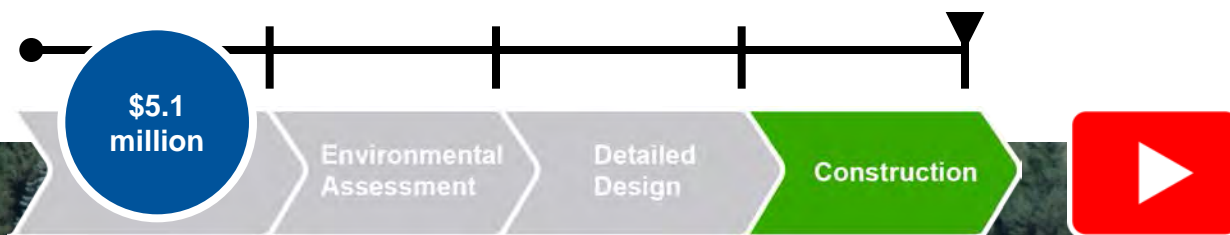


Bathurst Street – Road Paved and Guiderails Installed



Bathurst Street – Culvert

# Roundabout Keele Street and Lloydtown-Aurora Road



Roundabout - Aerial



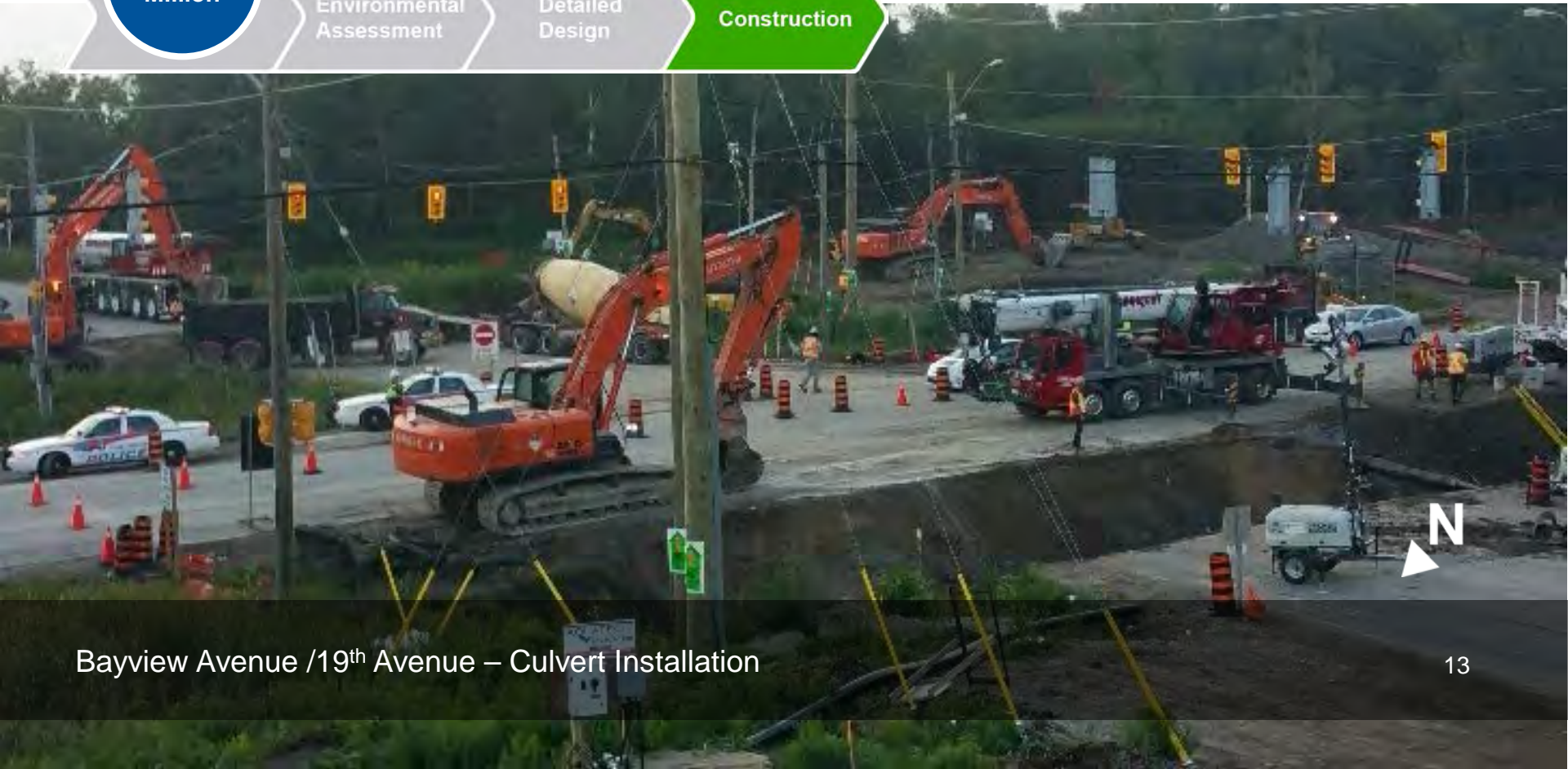
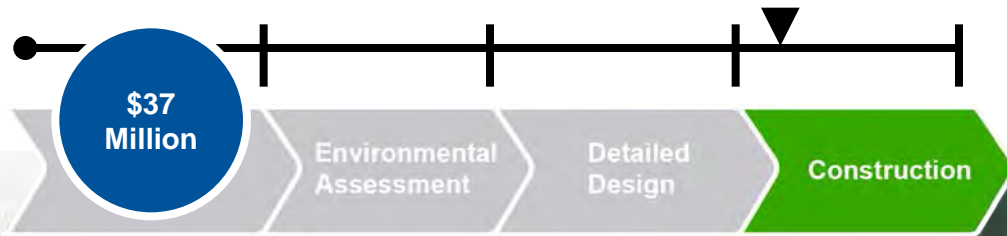
Keele Street and Lloydtown-Aurora  
Roundabout – Before



Roundabout – During Construction

# Bayview Avenue/19<sup>th</sup> Avenue

Elgin Mills Road to Stouffville Road  
Linda Margaret Crescent to Bayview Avenue



Bayview Avenue /19<sup>th</sup> Avenue – Culvert Installation



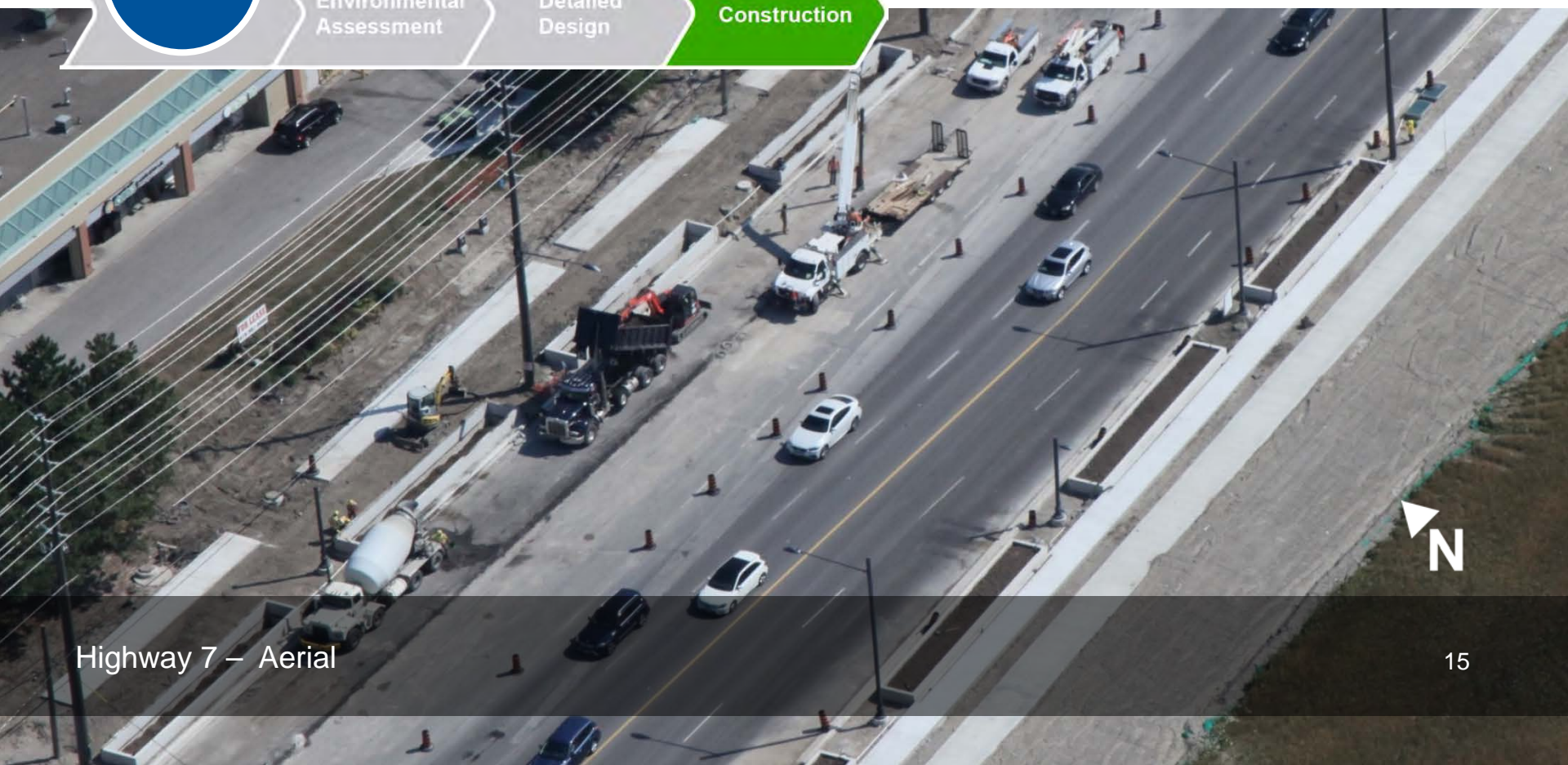
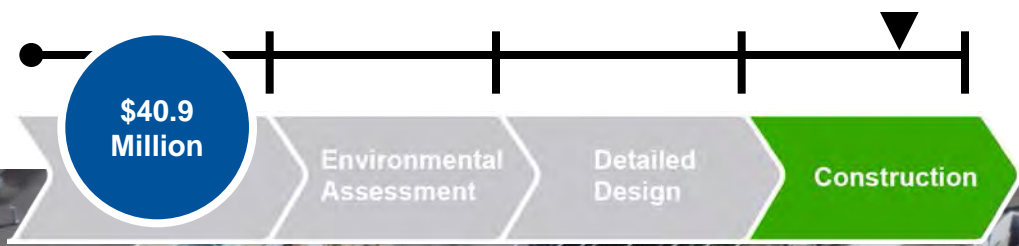
Bayview Avenue – Watercourse Relocation and New Structure



Bayview Avenue – Retaining Wall

# Highway 7

## Town Centre Boulevard to Sciberras Road



Highway 7 – Aerial





Sidewalk

Cycle Track

Landscape  
Buffer



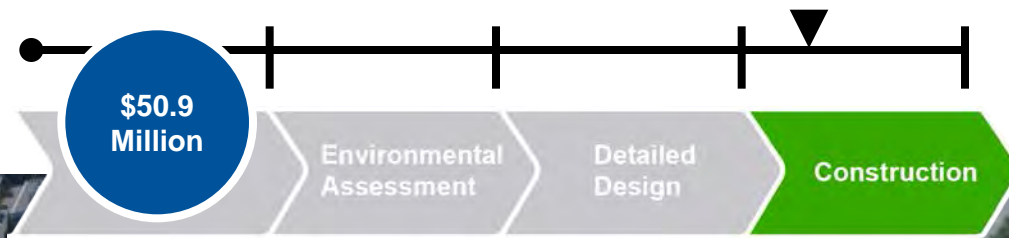
Highway 7 – Sidewalk, Cycle Track and Planter Box



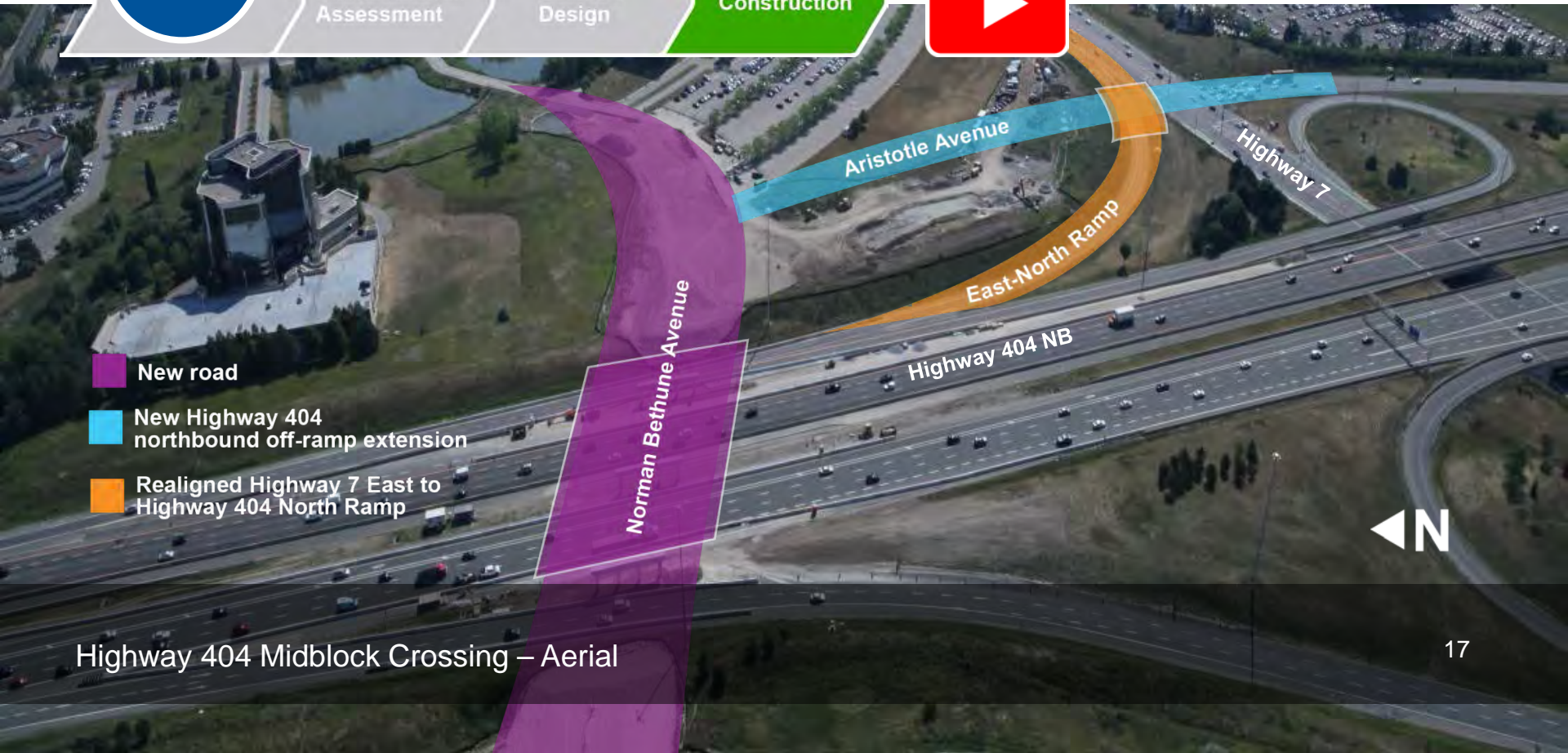
Highway 7 – Construction



# Highway 404 Midblock Crossing North of Highway 7



- New road
- New Highway 404 northbound off-ramp extension
- Realigned Highway 7 East to Highway 404 North Ramp



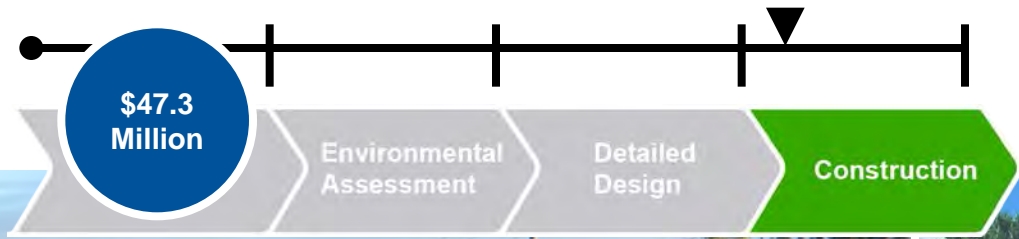
Highway 404 Midblock Crossing – Aerial



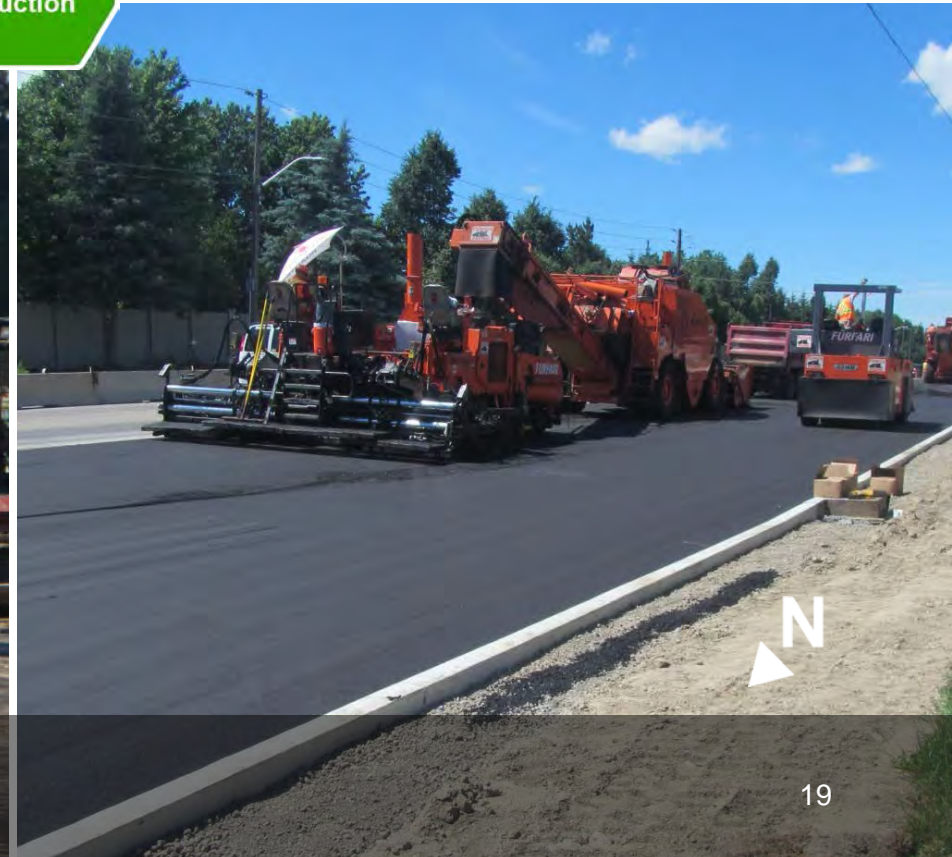
Highway 404 Midblock Crossing - North of Highway 7

# Leslie Street/ St. John's Sideroad

Wellington Street to Mulock Drive  
Bayview Avenue to Woodbine Avenue



Leslie Street – Construction South of Mulock Drive

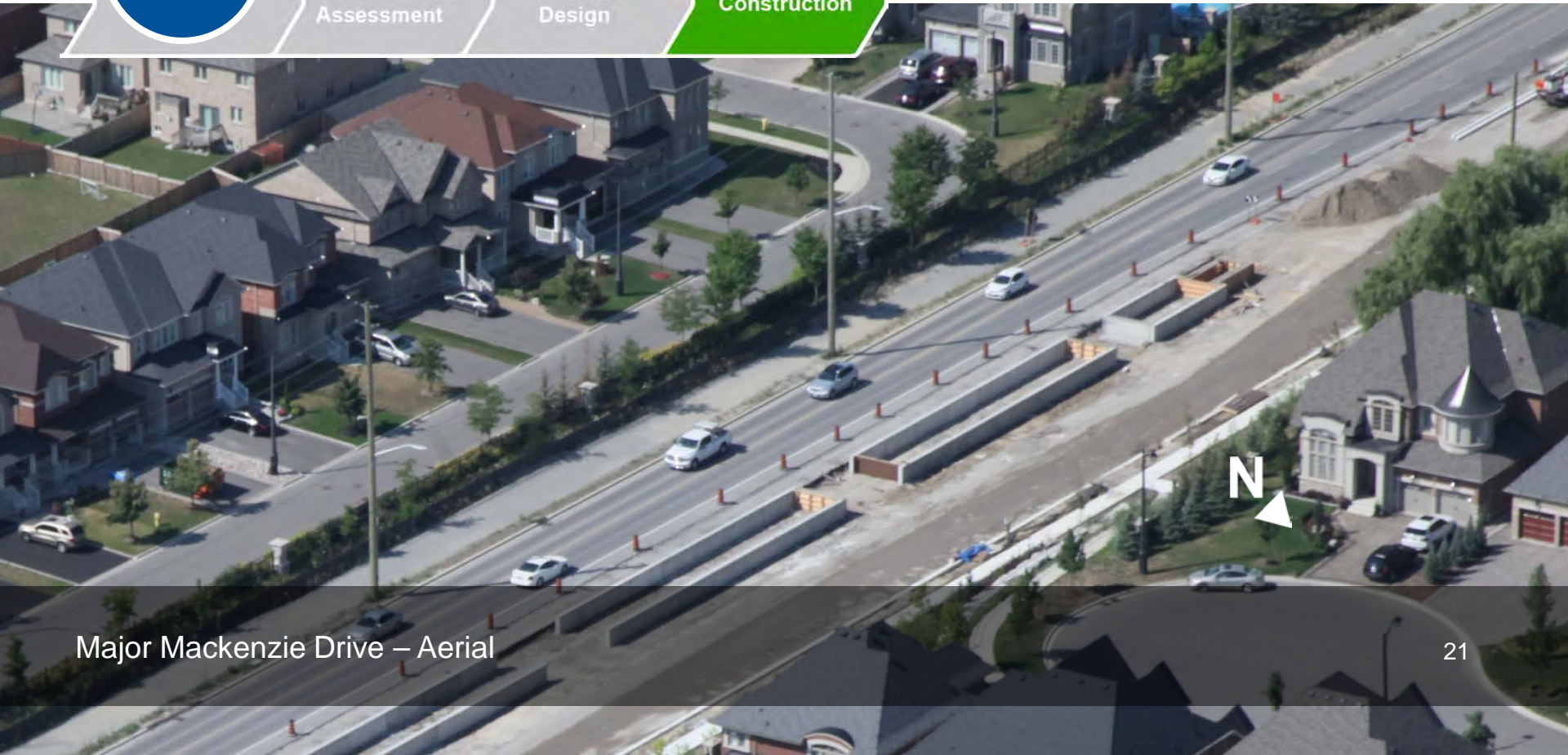
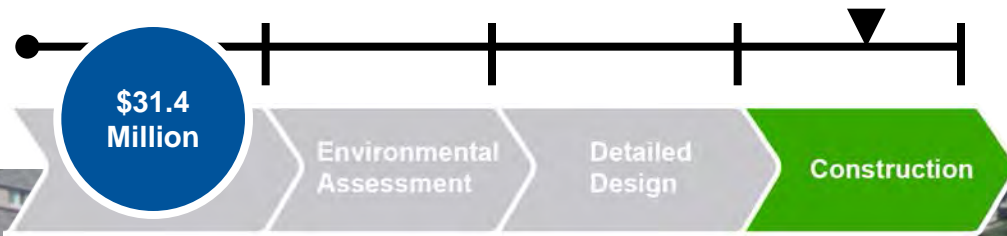




Leslie Street/ St. John's Sideroad



# Major Mackenzie Drive Pine Valley Drive to Highway 400



Major Mackenzie Drive – Aerial



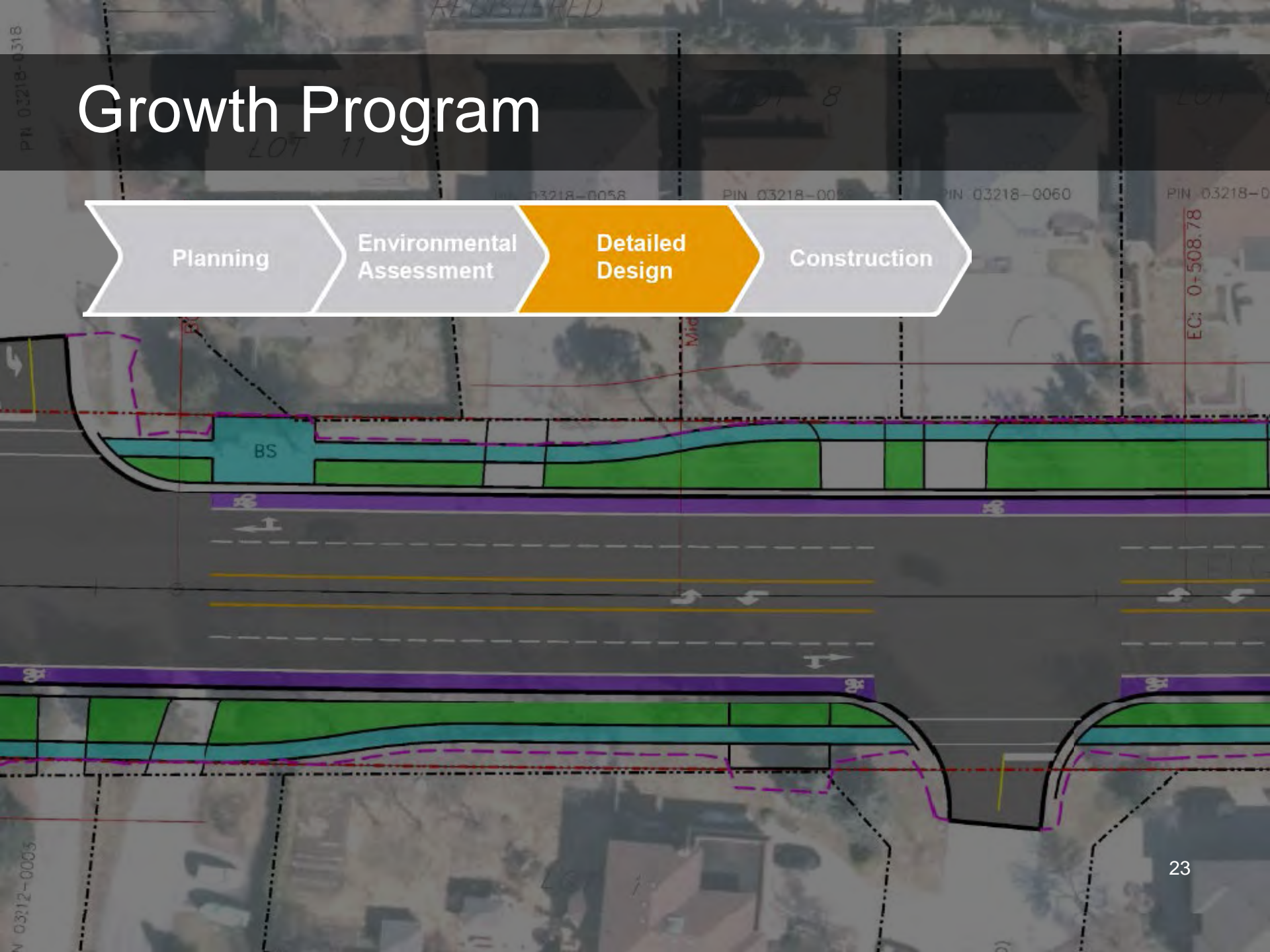
# Growth Program

Planning

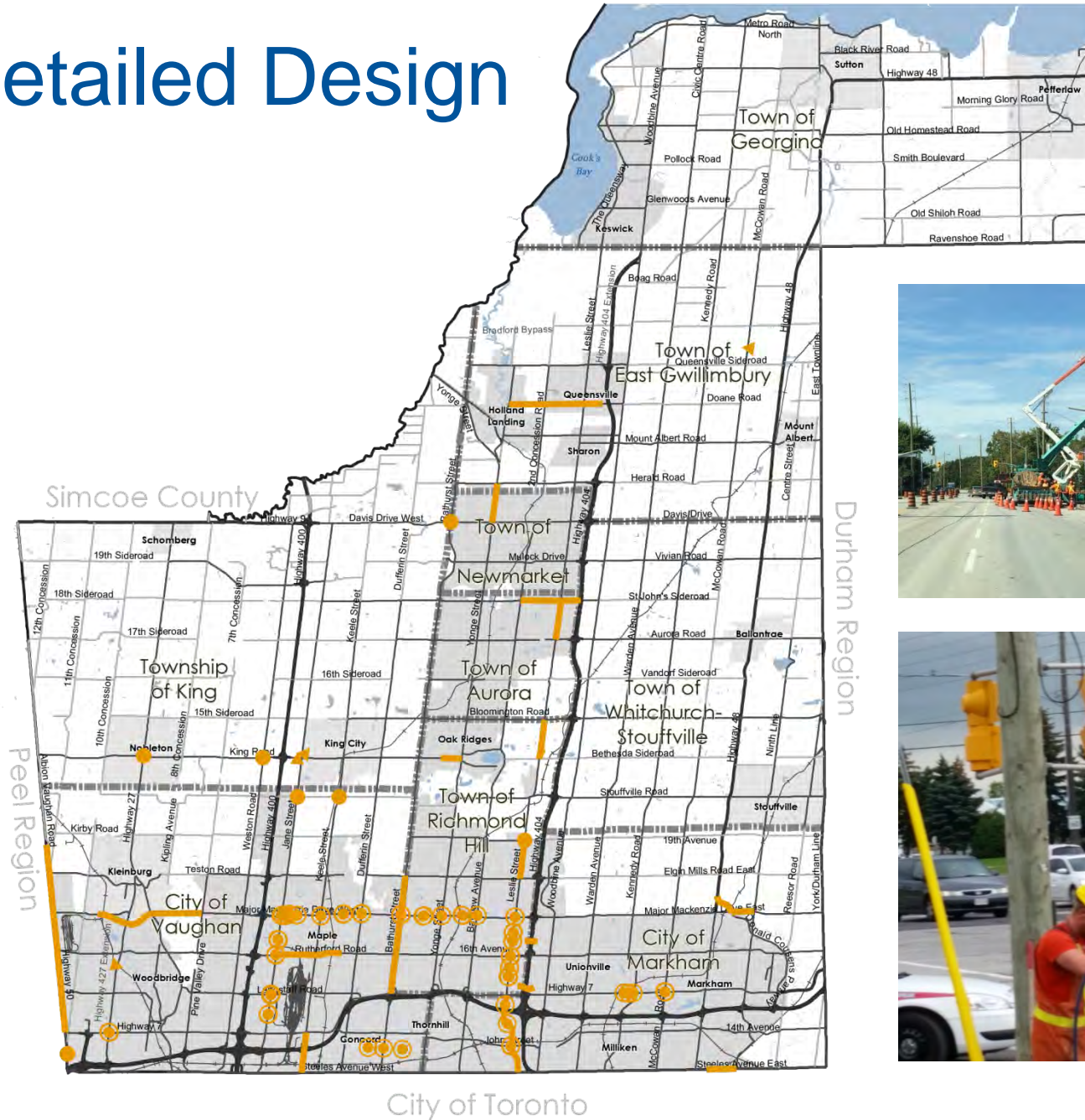
Environmental  
Assessment

Detailed  
Design

Construction



# Detailed Design

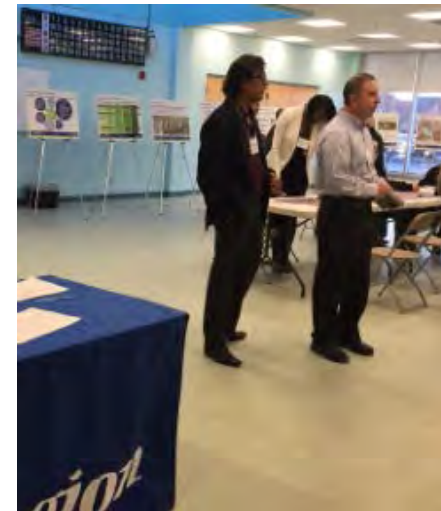
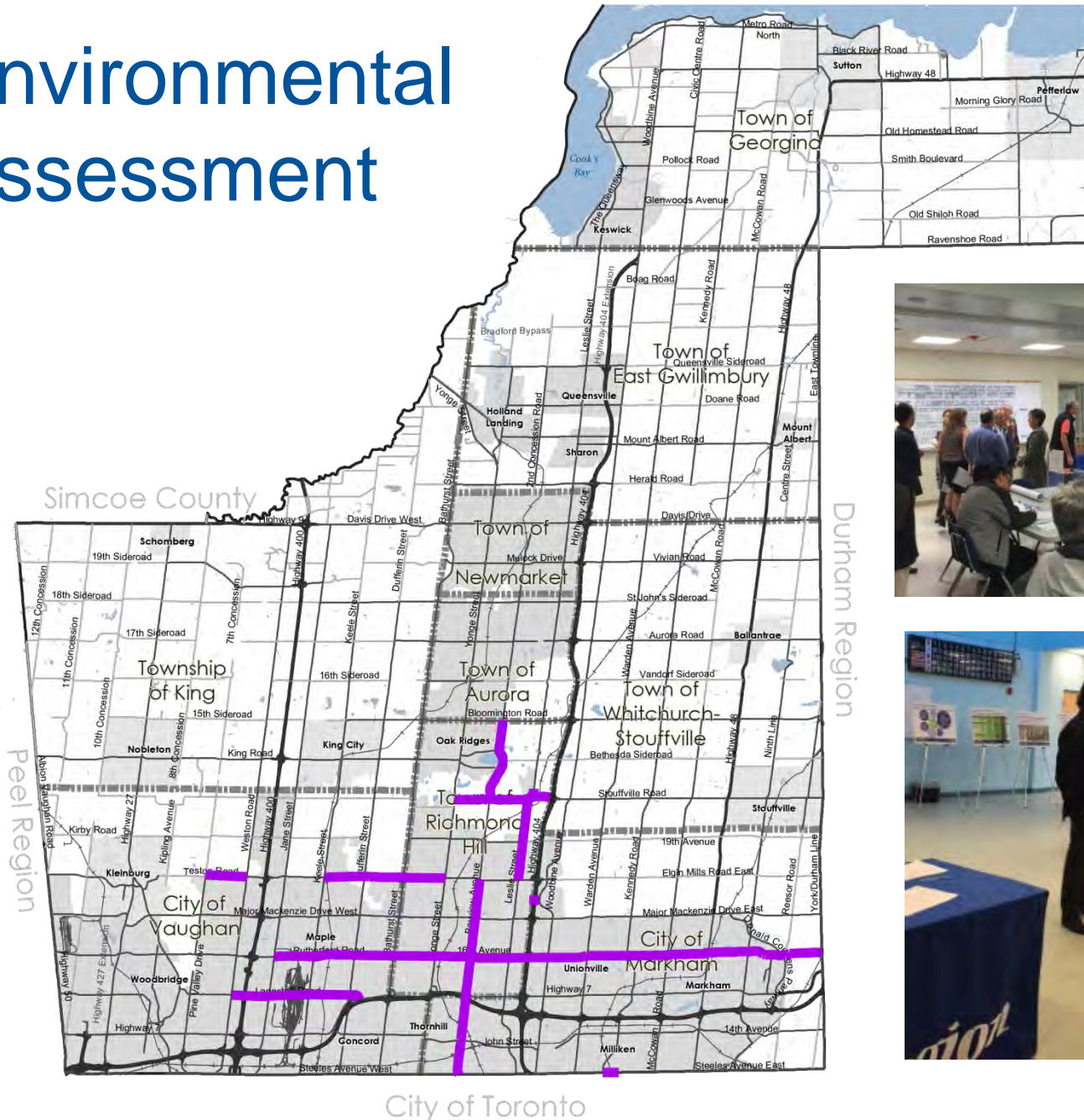




# Growth Program



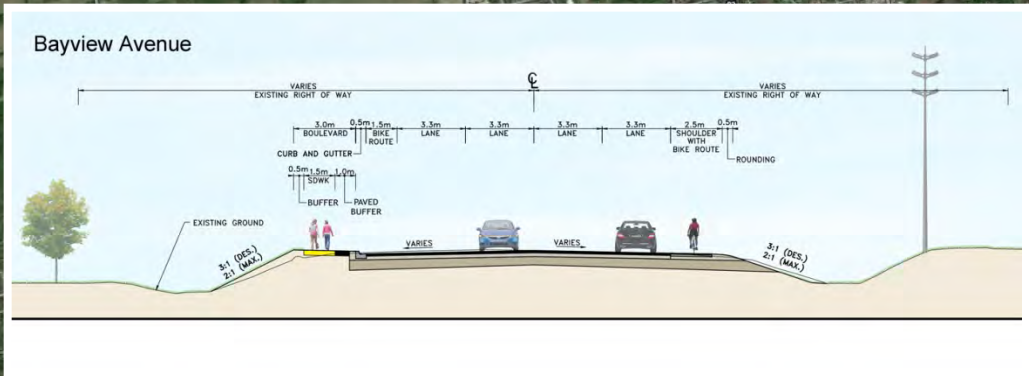
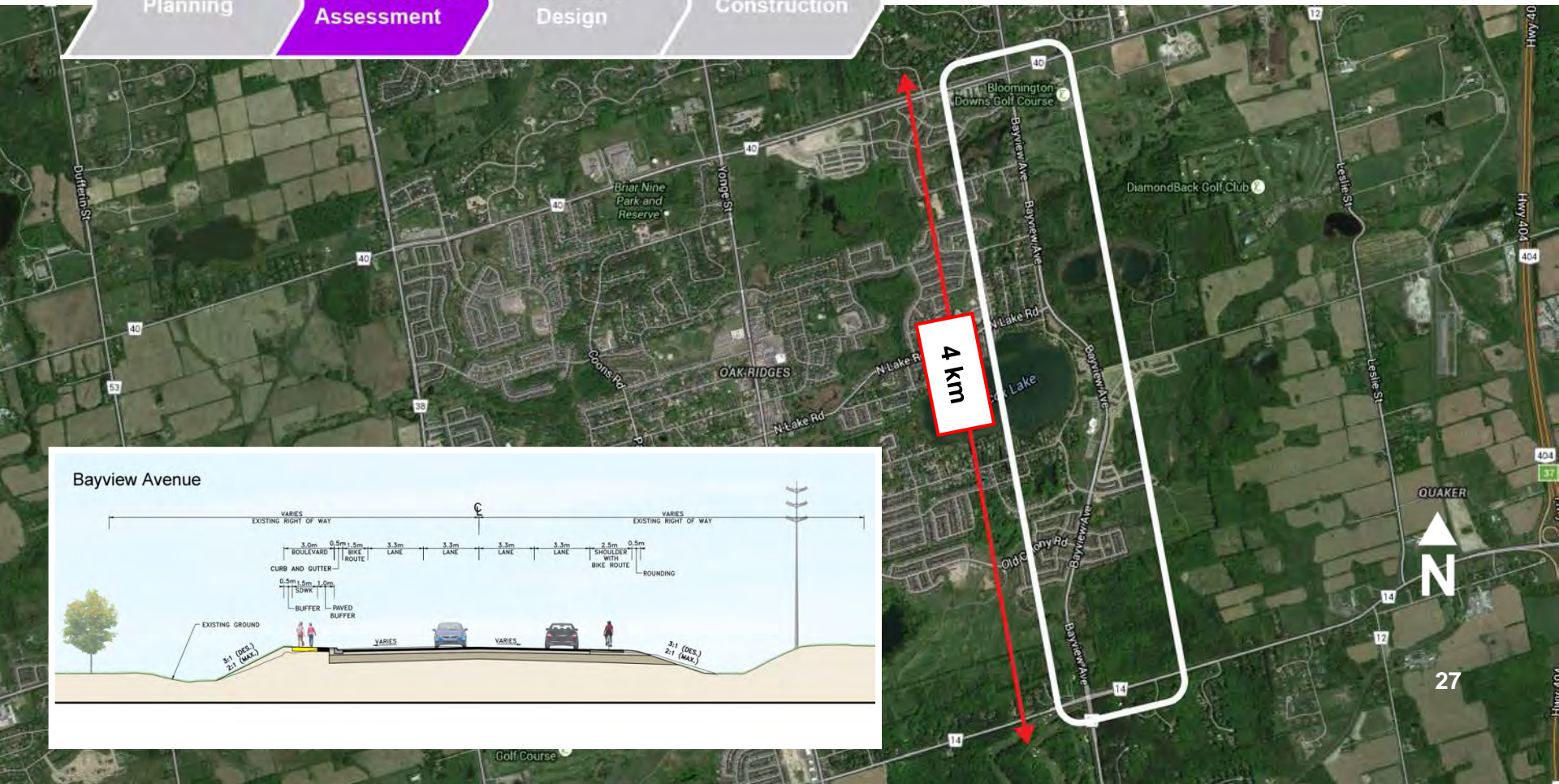
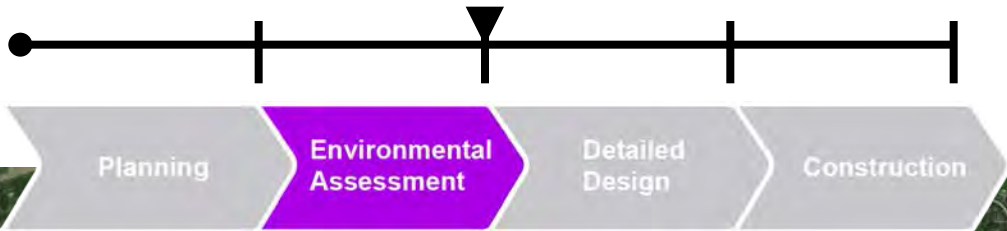
# Environmental Assessment



# Bayview Avenue

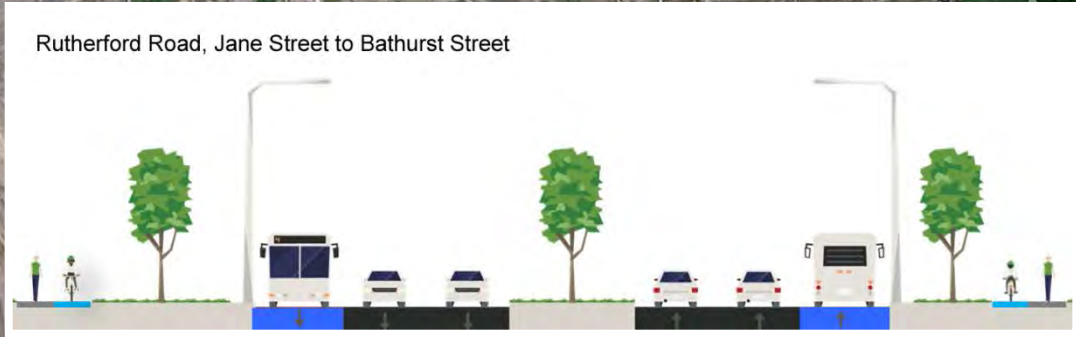
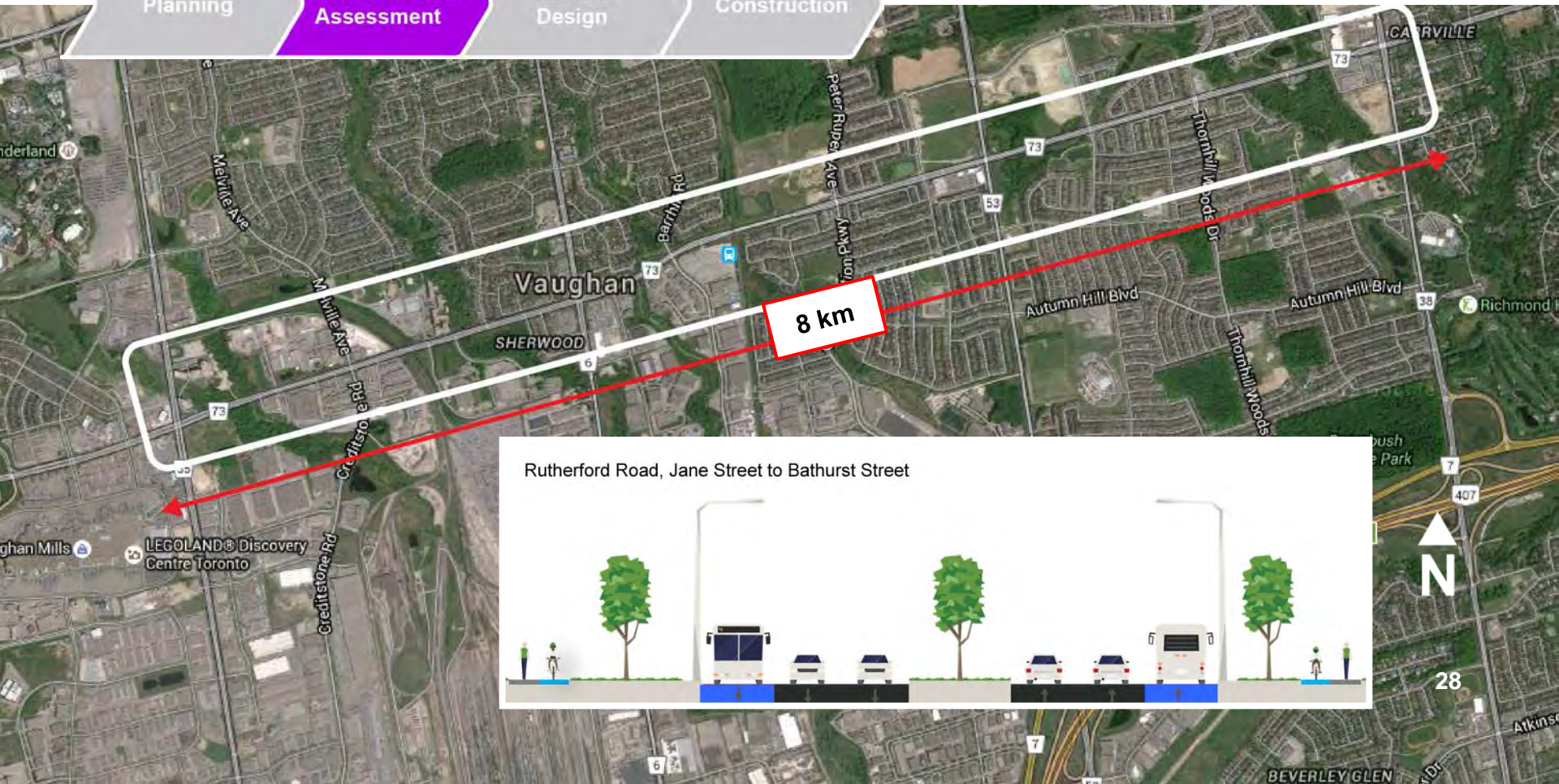
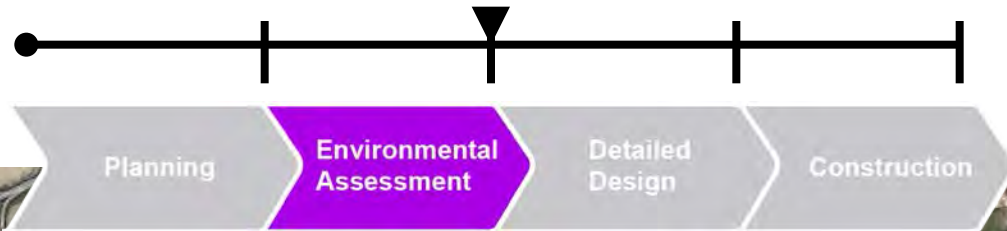
## Stouffville Road to Bloomington Road

Complete



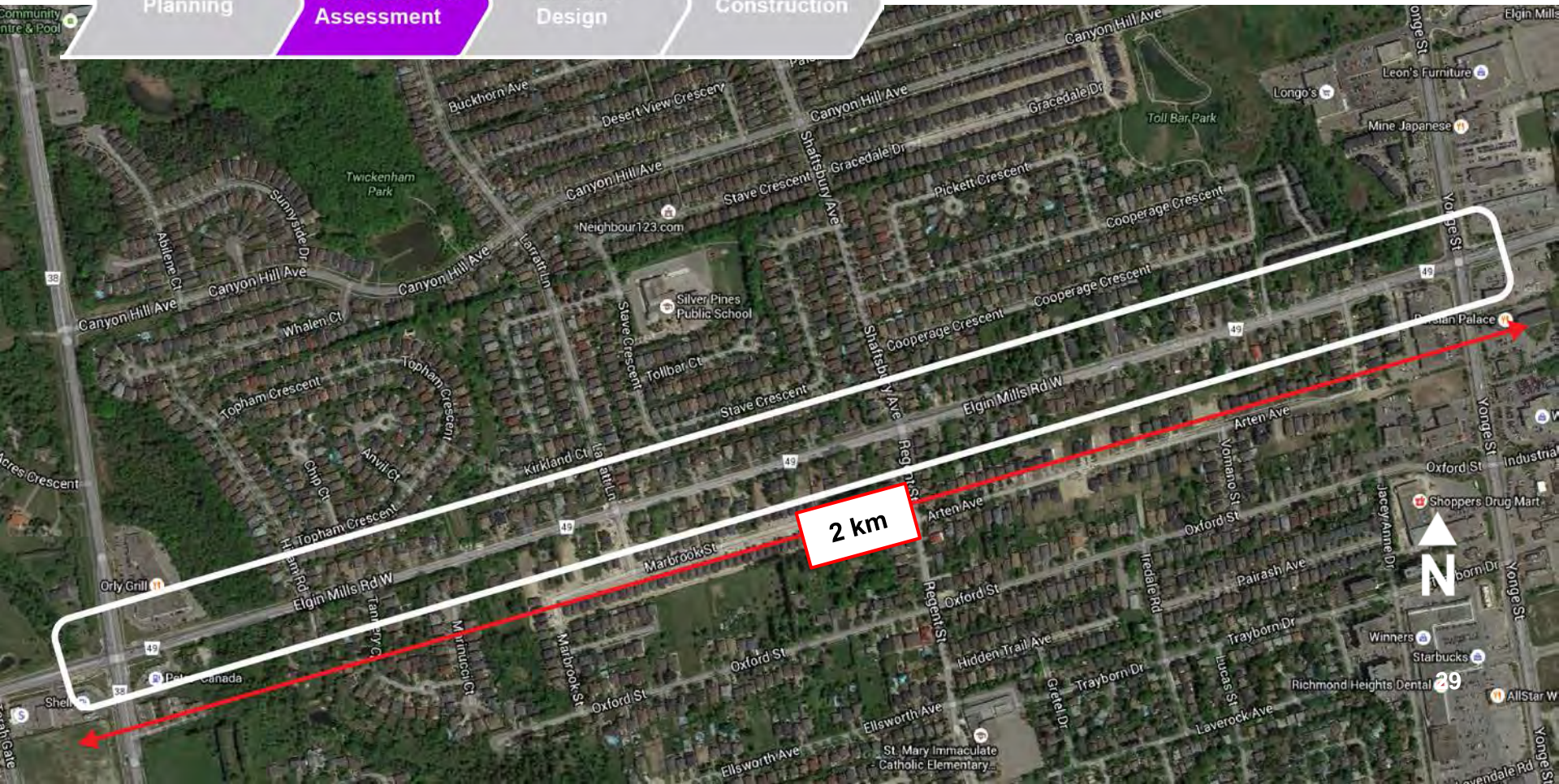
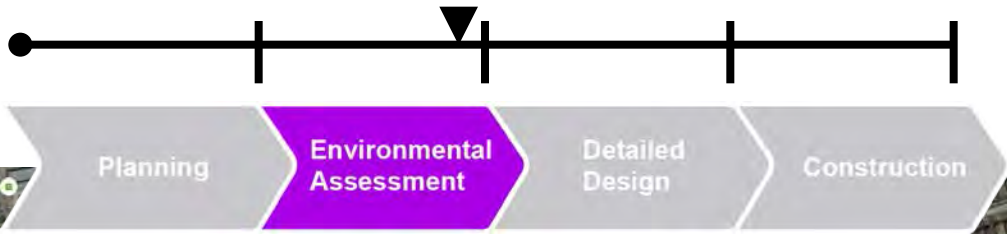
# Rutherford Road/Carrville Road Jane Street to Yonge Street

Complete



# Elgin Mills Road Bathurst Street to Yonge Street

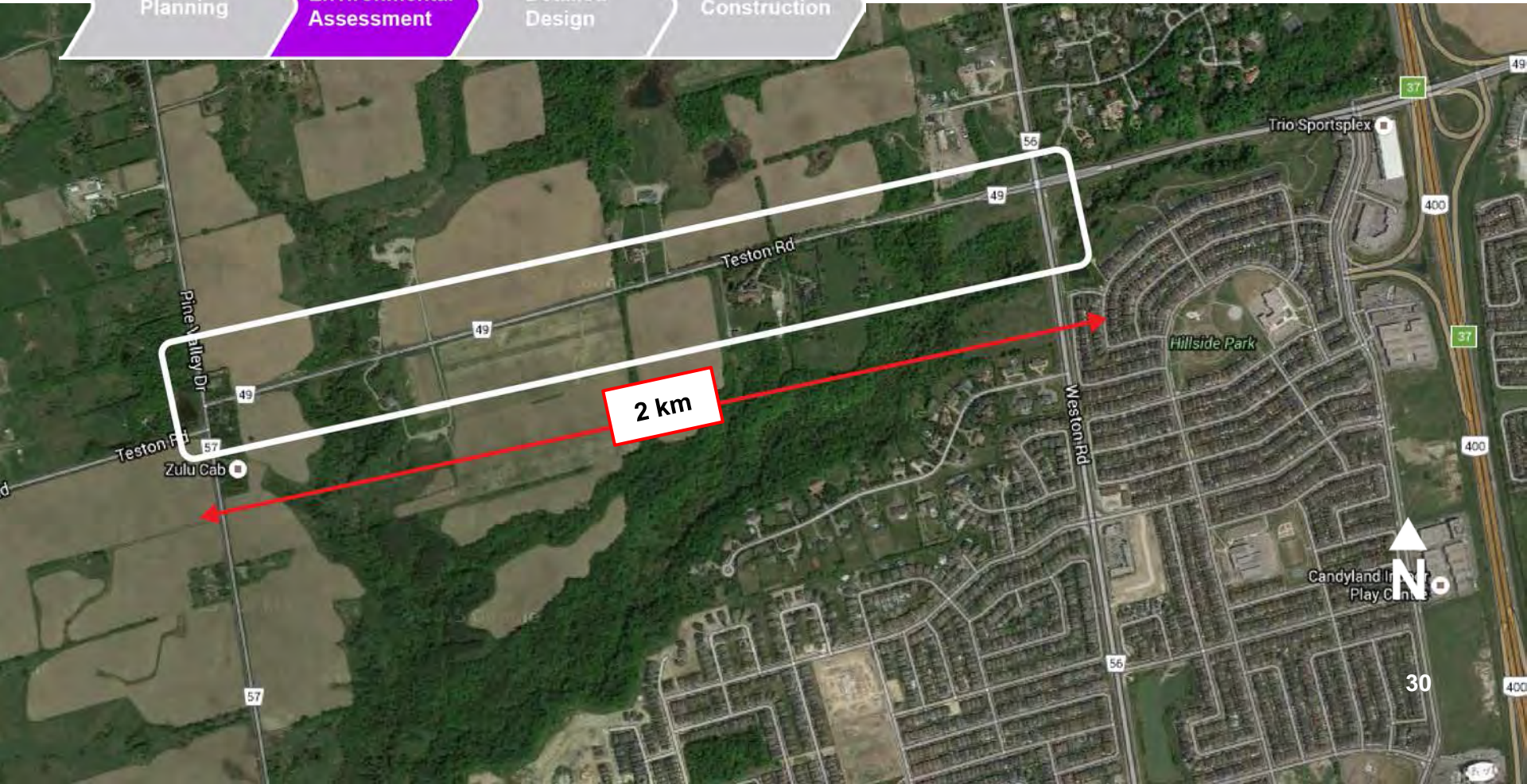
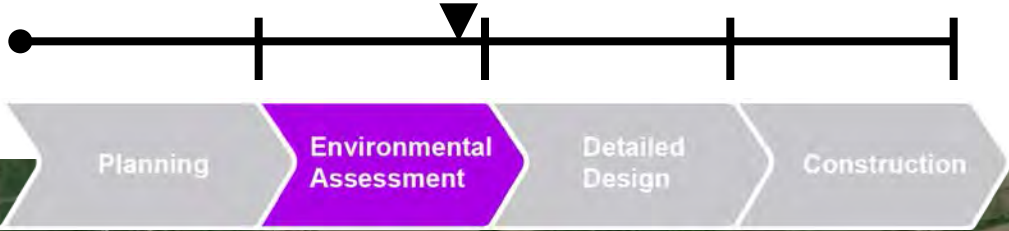
Underway



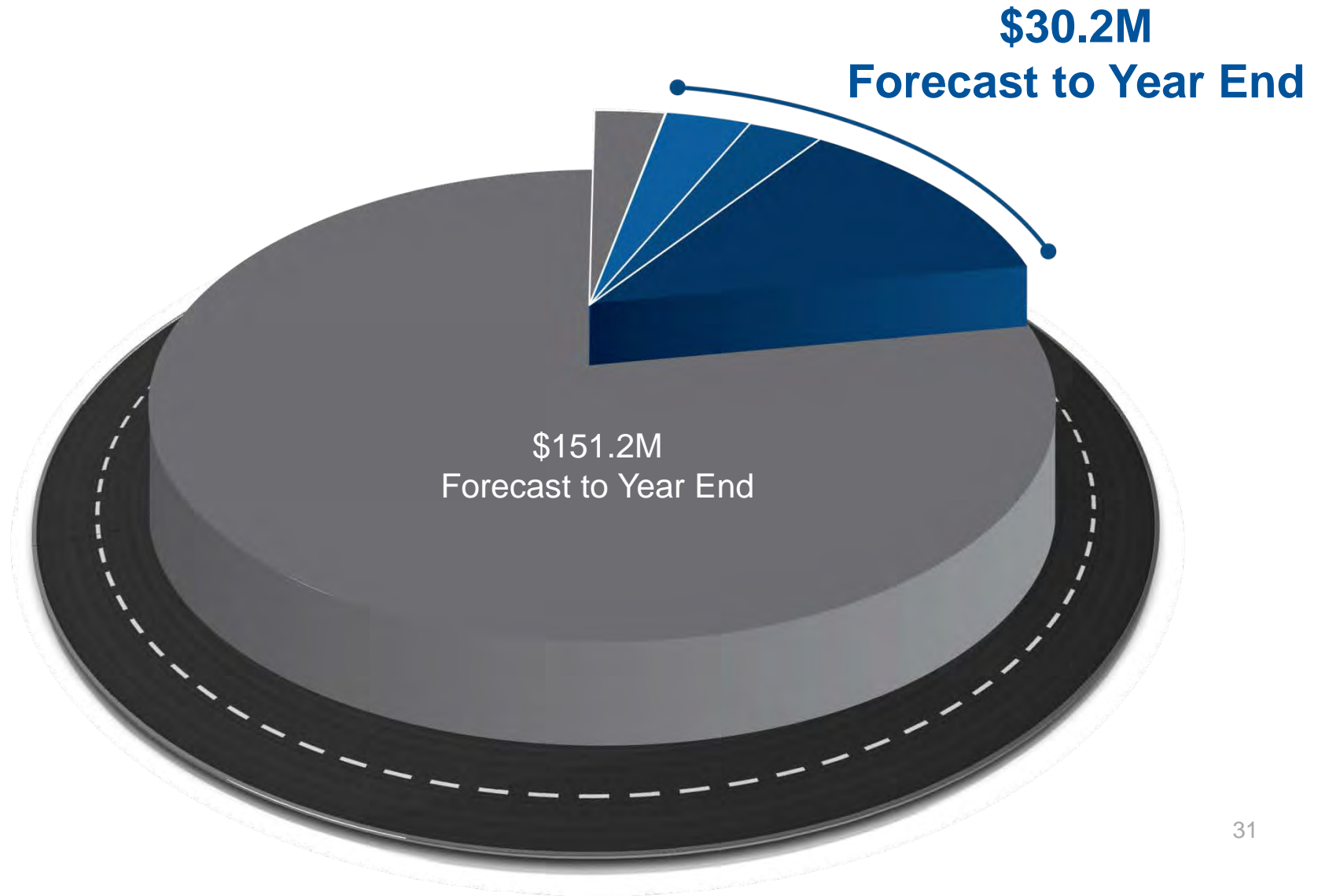
# Teston Road

## Pine Valley Drive to Weston Road

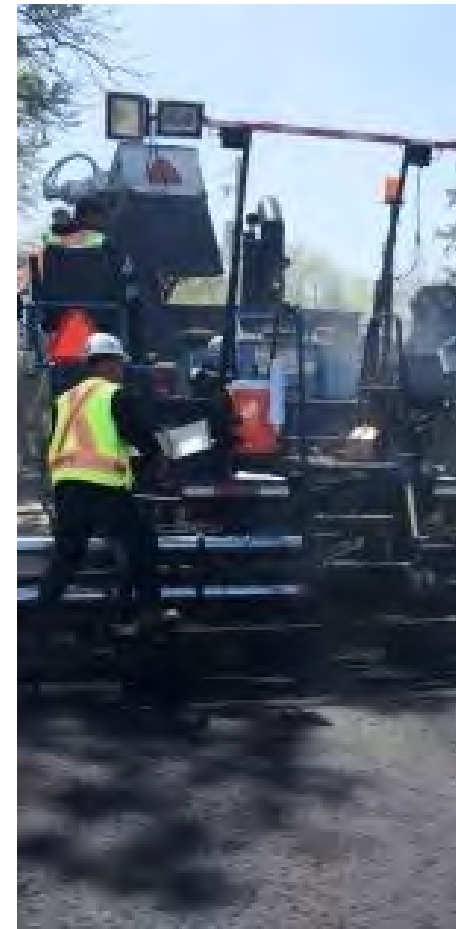
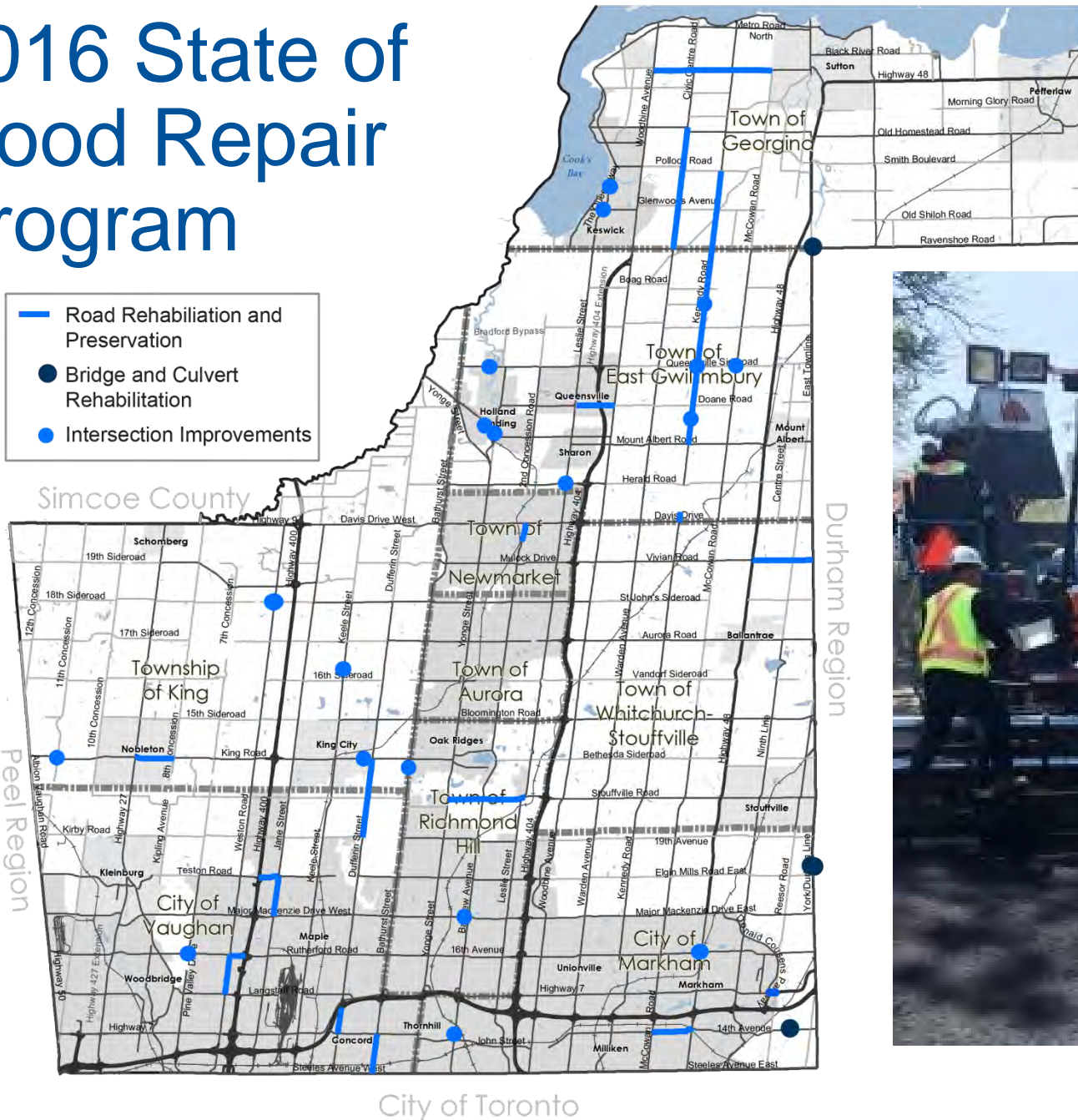
**Underway**



# 2016 State of Good Repair Program



# 2016 State of Good Repair Program





# 2016 State of Good Repair Program

\$22.6  
Million



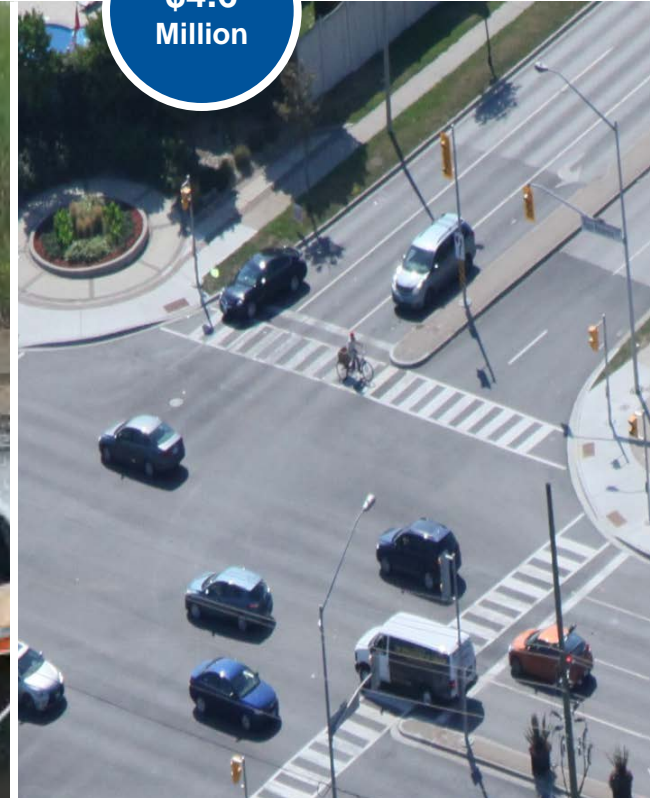
Road Rehabilitation  
and Preservation

\$3.0  
Million



Bridge and Culvert  
Rehabilitation

\$4.6  
Million



Intersection  
Improvements

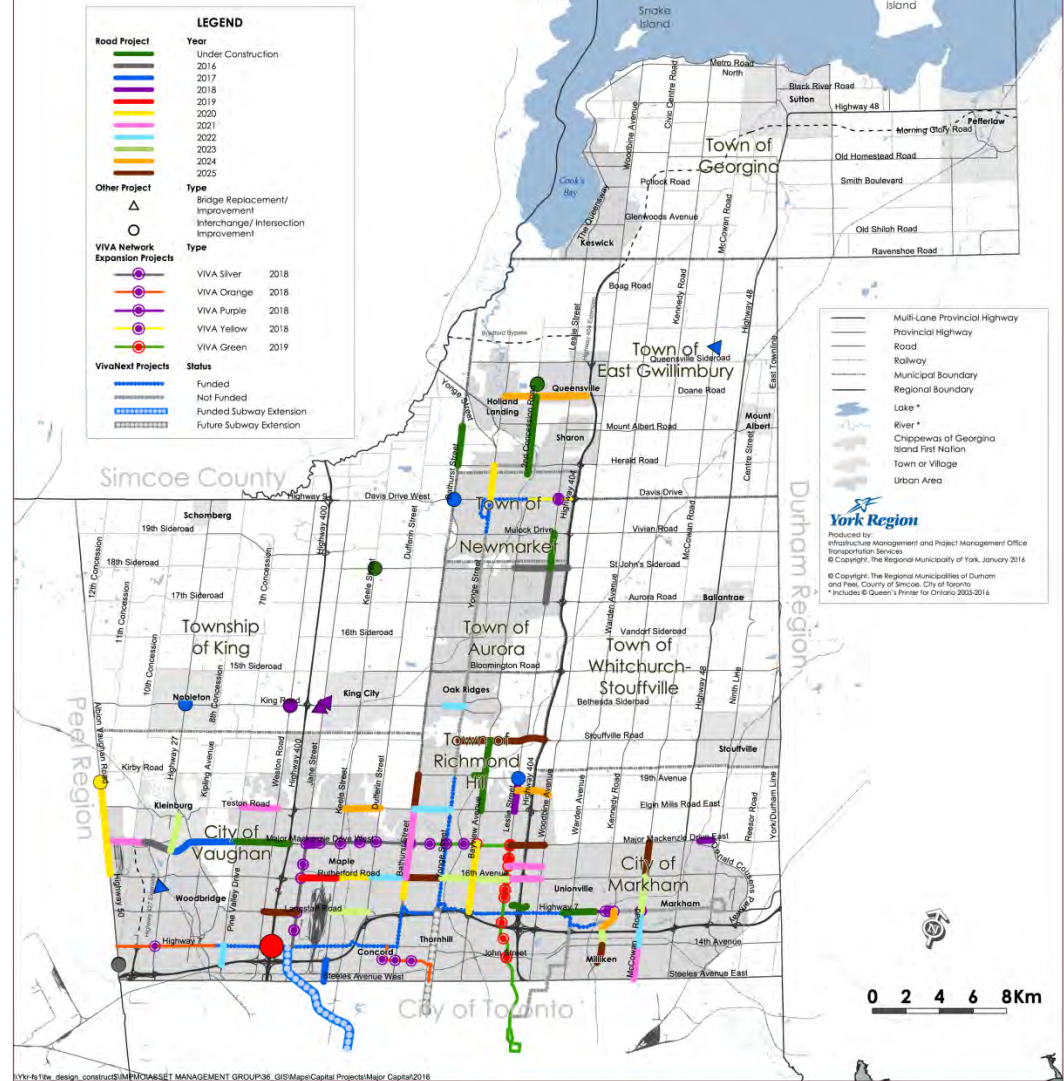
# Facilities



# Discussion

## 2016 10-YEAR ROADS AND TRANSIT CAPITAL CONSTRUCTION PROGRAM

APPROVED BY COUNCIL DECEMBER 17, 2015



Salim Alibhai, P.Eng., PMP  
 Director, Capital Planning and Delivery  
 Transportation Services

