

MAP 1 REGIONAL STRUCTURE

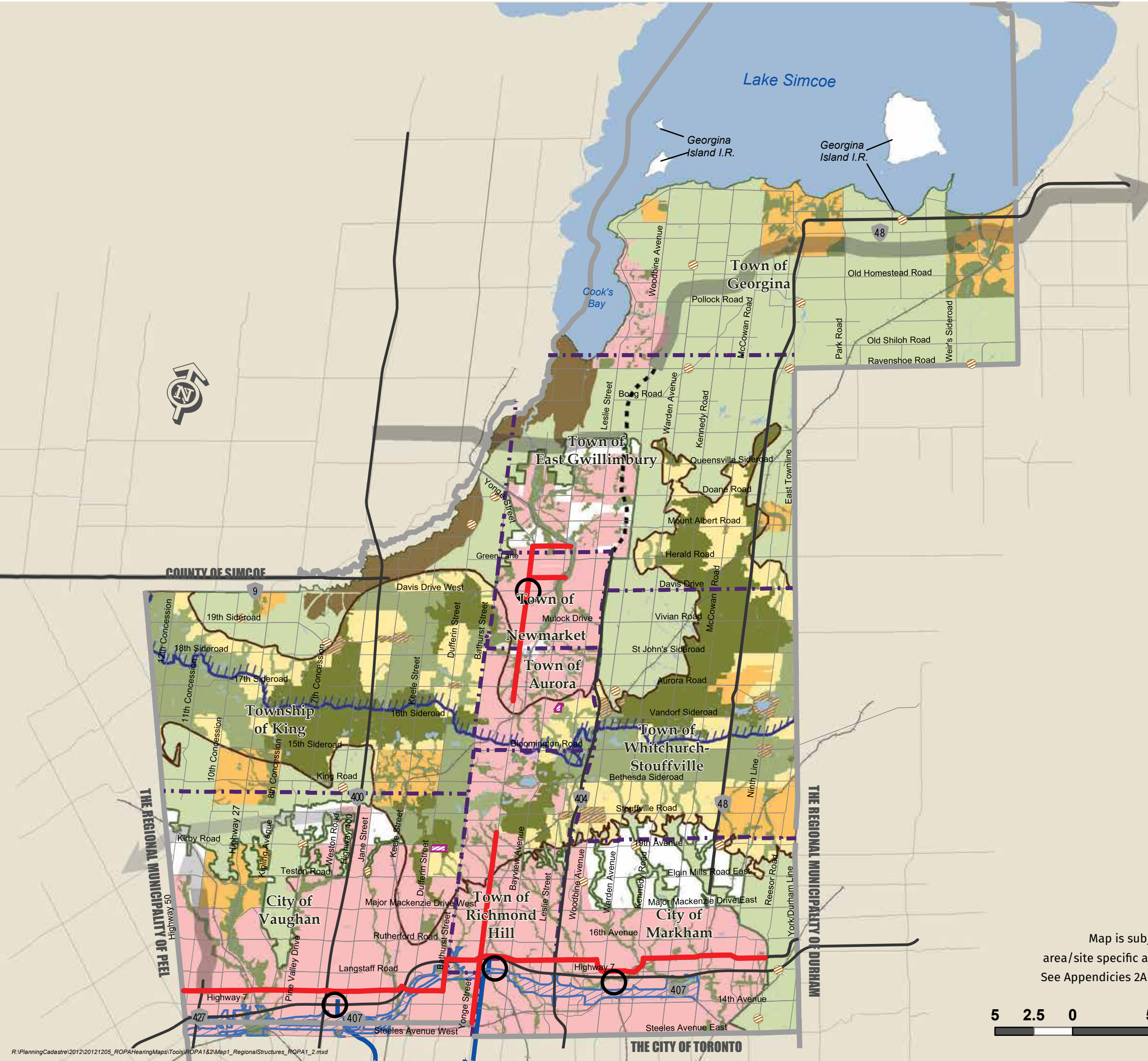
-  Regional Centre
-  Regional Corridor
-  Subway Extension
-  Urban Area
-  Towns and Villages
-  Regional Greenlands System (Schematic, See Map 2 for details)
-  Oak Ridges Moraine Conservation Plan
-  Oak Ridges Moraine Boundary
-  Natural Core Area Designation
-  Natural Linkage Area Designation
-  Countryside Area Designation / Hamlet
- Greenbelt Plan**
-  Greenbelt Plan Area Boundary
-  Greenbelt Protected Countryside / Hamlet
-  Holland Marsh Specialty Crop Area
-  Area Subject to the Lake Simcoe Protection Plan
-  Parkway Belt West Plan
-  Ministers Decision on ORMCP Designation Deferred
- Provincial Highways**
-  Existing
- Controlled Access Highway**
-  Under Construction
- Planned Corridors - Transportation**
-  Proposed - EA Approved
-  Conceptual - Alignment Not Defined
-  Municipal Boundary
-  Regional Boundary

Note: For detailed land use designations outside of the Urban Area, Towns & Villages and Natural Core and Natural Linkage Areas of the Oak Ridges Moraine Conservation Plan see Map 8 - Agricultural and Rural Area and policy 5.1.12



Produced by: Geographic Information Services Branch
Office of the Chief Administrative Officer
© Copyright, The Regional Municipality of York, December 2012

© Copyright, The Regional Municipalities of Durham and Peel, County of Simcoe, City of Toronto
© Queen's Printer for Ontario 2003-2010, Includes Greenbelt and Oak Ridges Moraine Boundaries and Water Features



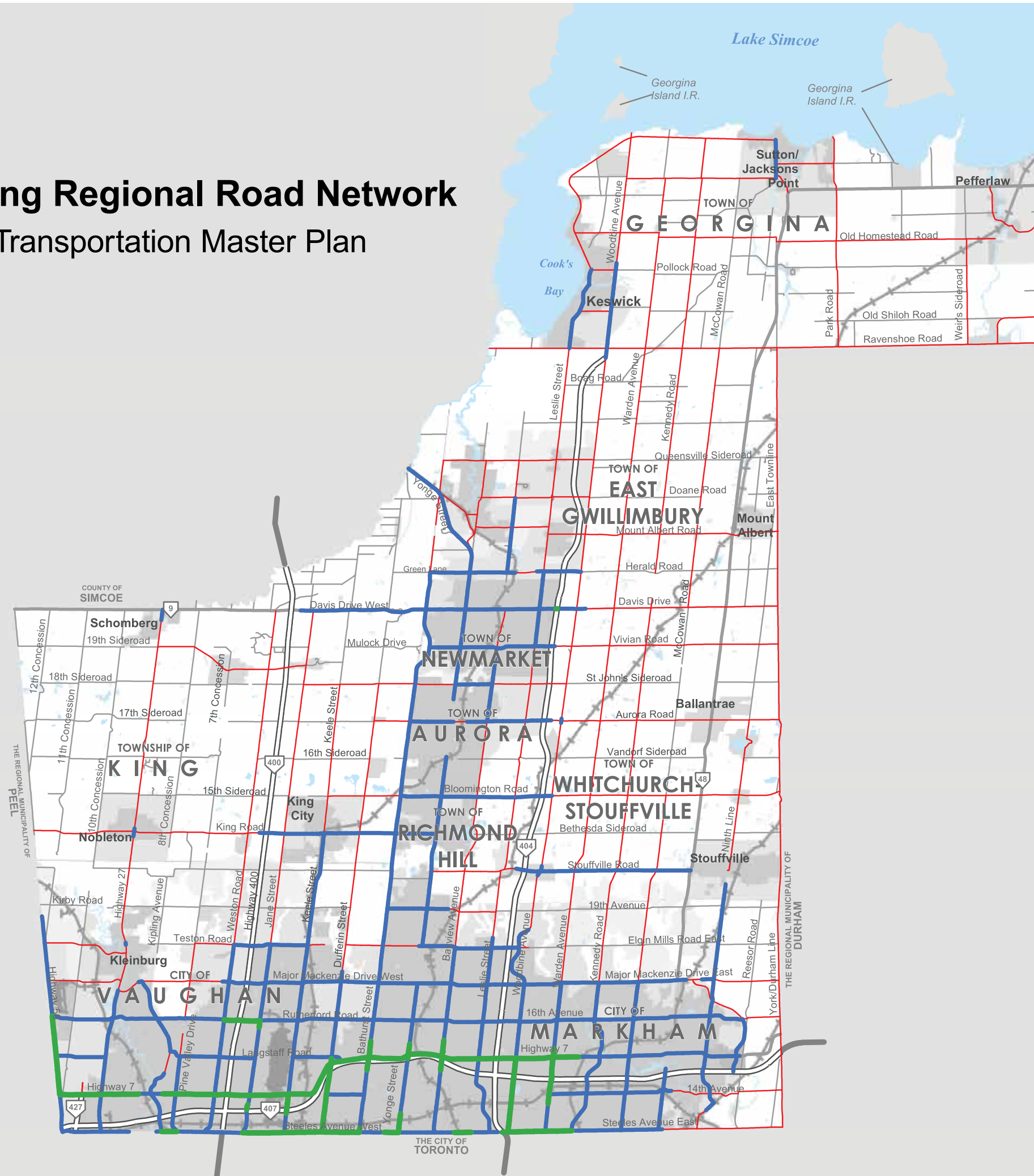
Map is subject to area/site specific appeal. See Appendices 2A & 2B.



MAP 2

Thursday, May 12, 2016

Existing Regional Road Network Transportation Master Plan



Regional Roads

- 2 Lanes
- 4 Lanes
- 6 Lanes

BASE MAP INFORMATION

- Provincial Freeway
- Provincial Highway
- Road
- Railway

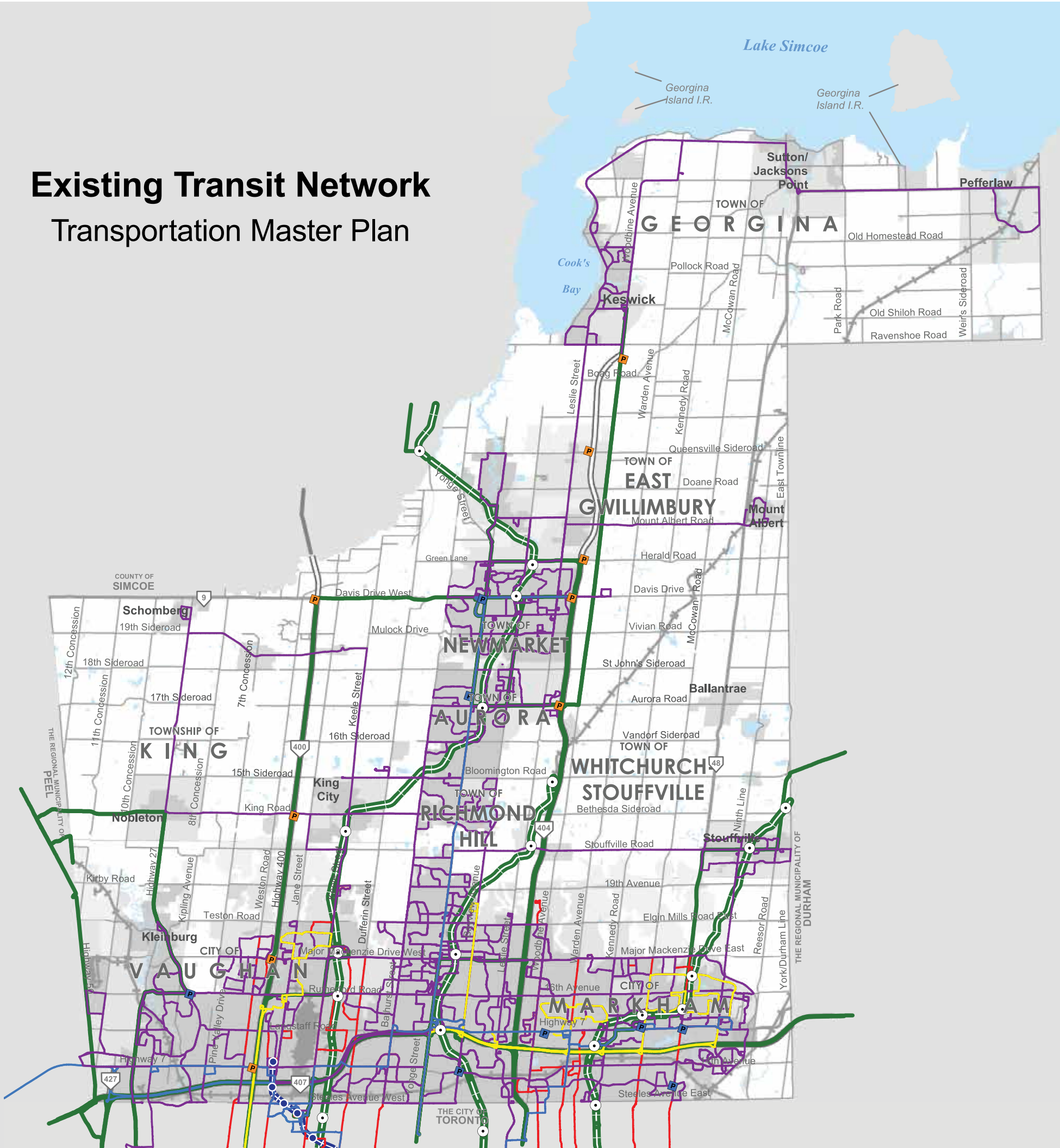


Produced by:
Infrastructure Management & PMO Branch
Transportation Services
© Copyright, The Regional Municipality of York,
May 2016

© Copyright, The Regional Municipalities of Durham
and Peel, County of Simcoe, City of Toronto
© Queen's Printer for Ontario 2003-2010,
Includes Greenbelt and Oak Ridges Moraine
Boundaries and Water Features

Existing Transit Network

Transportation Master Plan



MAP 3

Thursday, May 12, 2016

Bus Routes

- YRT
 - VIVA
 - Express
 - Regular

Other Agency

- Brampton
- TTC
- GO Bus

Existing Commuter Lots

- MTO
- YRT

Subway

- Spadina Subway Extension
 - Spadina Subway Extension Station

GO Rail

- GO Train, Rush Hour Service
 - Existing GO Station

BASE MAP INFORMATION

- Provincial Freeway
- Provincial Highway
- Road
- Railway



Produced by:
Infrastructure Management & PMO Branch
Transportation Services
© Copyright, The Regional Municipality of York,
May 2016

© Copyright, The Regional Municipalities of Durham and Peel, County of Simcoe, City of Toronto
© Queen's Printer for Ontario 2003-2010,
Includes Greenbelt and Oak Ridges Moraine Boundaries and Water Features

MAP 4

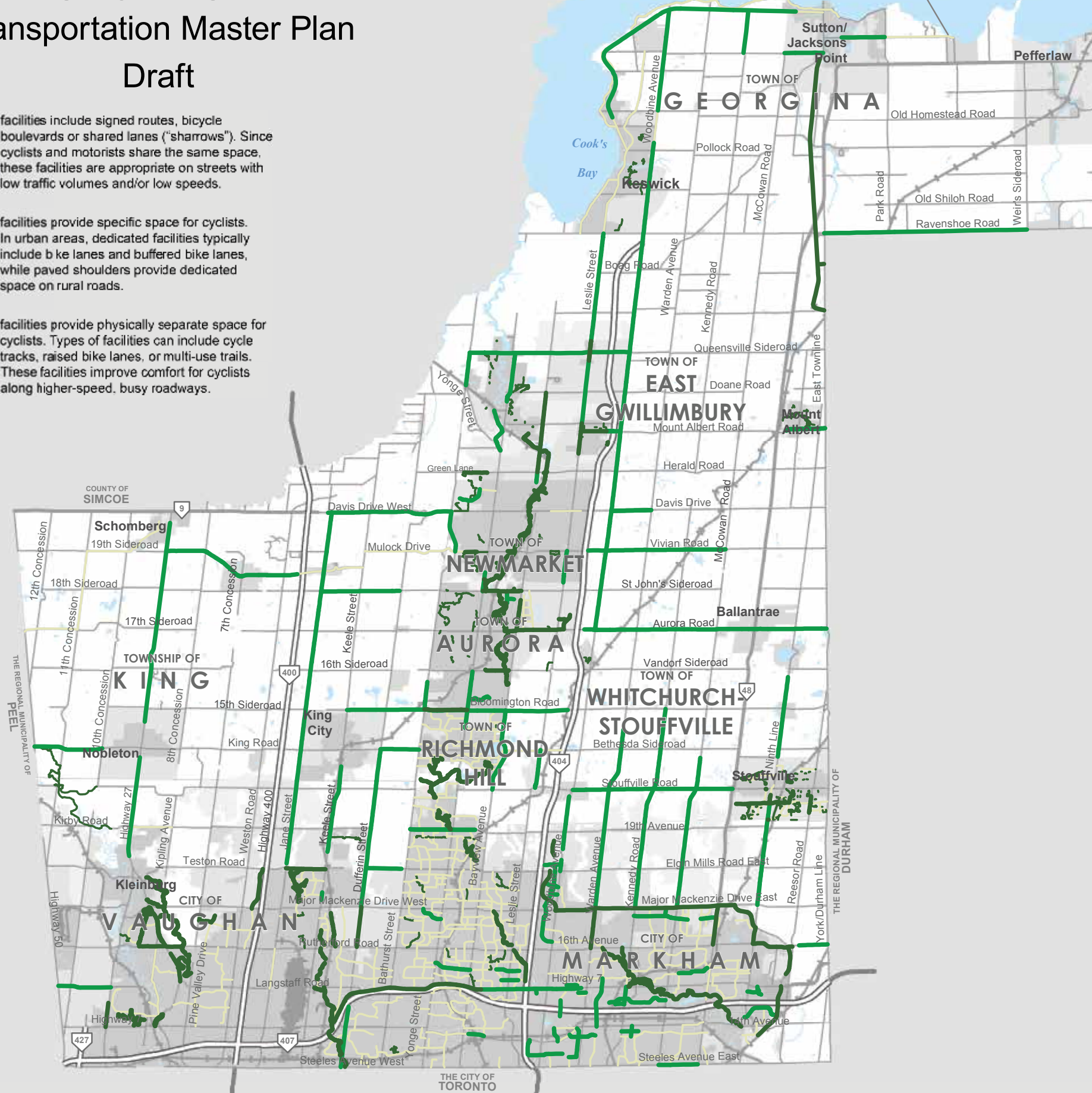
Thursday, May 12, 2016

Existing Cycling Network Transportation Master Plan Draft

Shared facilities include signed routes, bicycle boulevards or shared lanes ("sharrows"). Since cyclists and motorists share the same space, these facilities are appropriate on streets with low traffic volumes and/or low speeds.

Dedicated facilities provide specific space for cyclists. In urban areas, dedicated facilities typically include bike lanes and buffered bike lanes, while paved shoulders provide dedicated space on rural roads.

Separated facilities provide physically separate space for cyclists. Types of facilities can include cycle tracks, raised bike lanes, or multi-use trails. These facilities improve comfort for cyclists along higher-speed, busy roadways.



Existing Cycling Network

- Shared Facility
- Dedicated Facility
- Separated Facility

BASE MAP INFORMATION

- Provincial Freeway
- Provincial Highway
- Road
- Railway



Produced by:
Infrastructure Management & PMO Branch
Transportation Services
© Copyright, The Regional Municipality of York,
May 2016

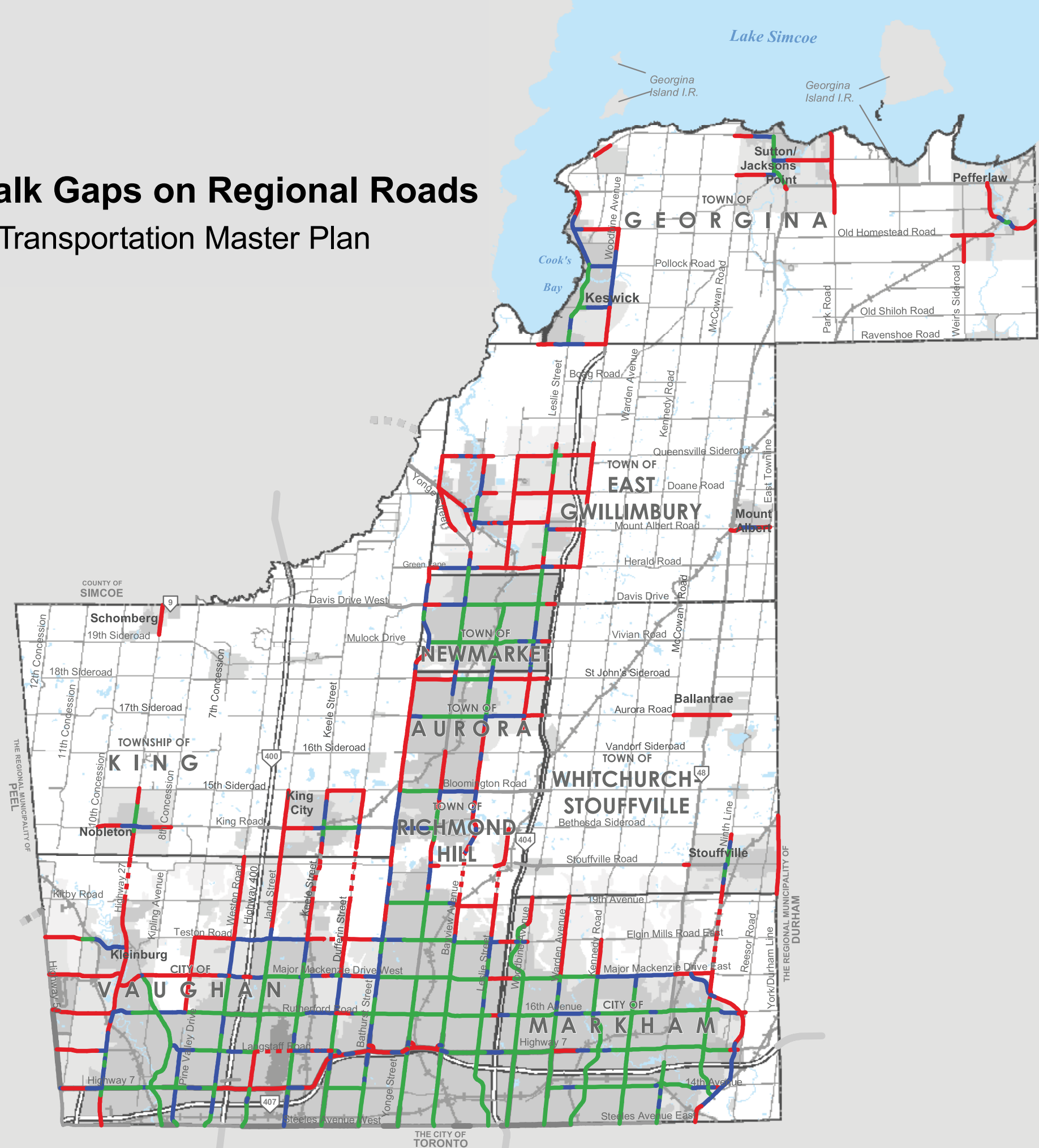
© Copyright, The Regional Municipalities of Durham and Peel, County of Simcoe, City of Toronto
© Queen's Printer for Ontario 2003-2010,
Includes Greenbelt and Oak Ridges Moraine Boundaries and Water Features

Sidewalk Gaps on Regional Roads

Transportation Master Plan

MAP 5

Thursday, May 12, 2016



Legend

Sidewalk Location within Designated Urban Boundary

- No Sidewalk
- Sidewalk on One Side
- Sidewalk on Both Sides
- - - Potential Active Transportation Connection

BASE MAP INFORMATION

- Provincial Freeway
- Provincial Highway
- Road
- Railway



Produced by:
Infrastructure Management & PMO Branch
Transportation Services
© Copyright, The Regional Municipality of York,
May 2016

© Copyright, The Regional Municipalities of Durham and Peel, County of Simcoe, City of Toronto
© Queen's Printer for Ontario 2003-2010,
Includes Greenbelt and Oak Ridges Moraine Boundaries and Water Features