



Implementing the Accessibility For Ontarians with Disabilities Act (AODA): Accessible Intersections Update

York Region Accessibility Advisory Committee

Doug MacKay

Wednesday, April 27, 2016

Overview

- To present an update on implementing AODA elements relating to intersections
 - Accessible pedestrians signals
 - Tactile walking surface indicators
 - Wayfinding (ramps)
- Signalized and unsignalized intersections
- Urban and rural intersections
- Informed by legislation and York Region resources

Existing Intersections



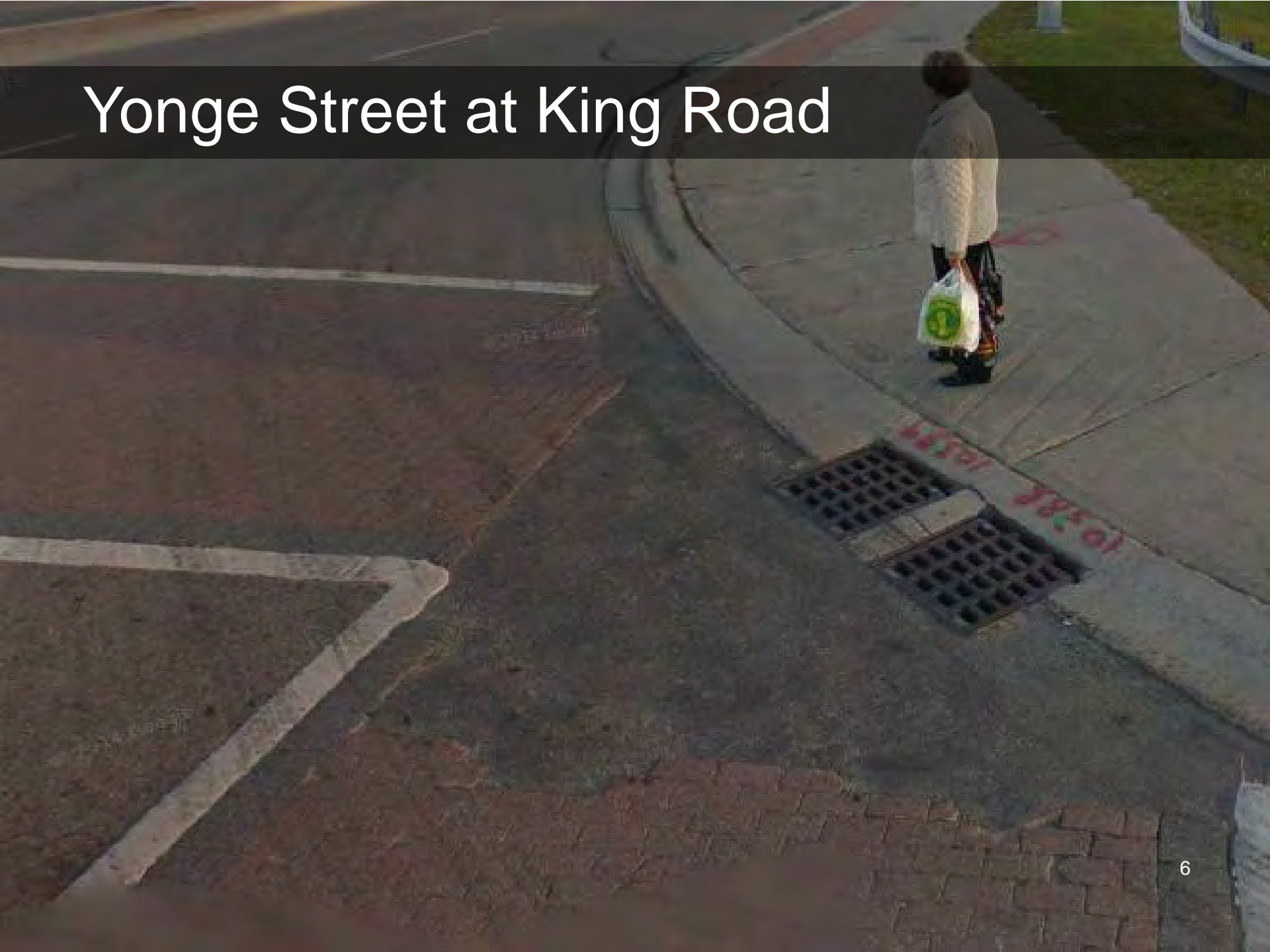
Bathurst Street at Milner Gate/ Chabad Gate



Highway 27 at Nashville Road



Yonge Street at King Road



What Constitutes AODA Elements at Signalized Intersections



Accessible Pedestrian Signals

- Raised tactile arrow points in the direction of the pedestrian crossing
- Arrow vibrates when activated (after holding button for 3 seconds)
- “Cuckoo” for north-south
- “Chirp” for east-west
- Locator tone



Tactile Walking Surface Indicators

- Cast iron plates inlaid into concrete
- Set back from the back of curb
- Intended to be detectable under foot when walking
- Cast iron will become rust coloured (patina) over time
- The photo below is of an acceptable installation



An Unacceptable Installation



Wayfinding (Curb Ramps)

Until recently, York Region's standard had pedestrian crossings meet at a common curb ramp.

The solution is to separate the ramps by direction.



York Region's New Standard



Construction is Disruptive



Davis Drive at Eagle Street - Before



Davis Drive at Eagle Street - After



Rural Intersections

- Accessibility elements (for example, tactile plates) would be provided at rural intersections when there are transit stops



Dufferin Street at Kirby Road - Before



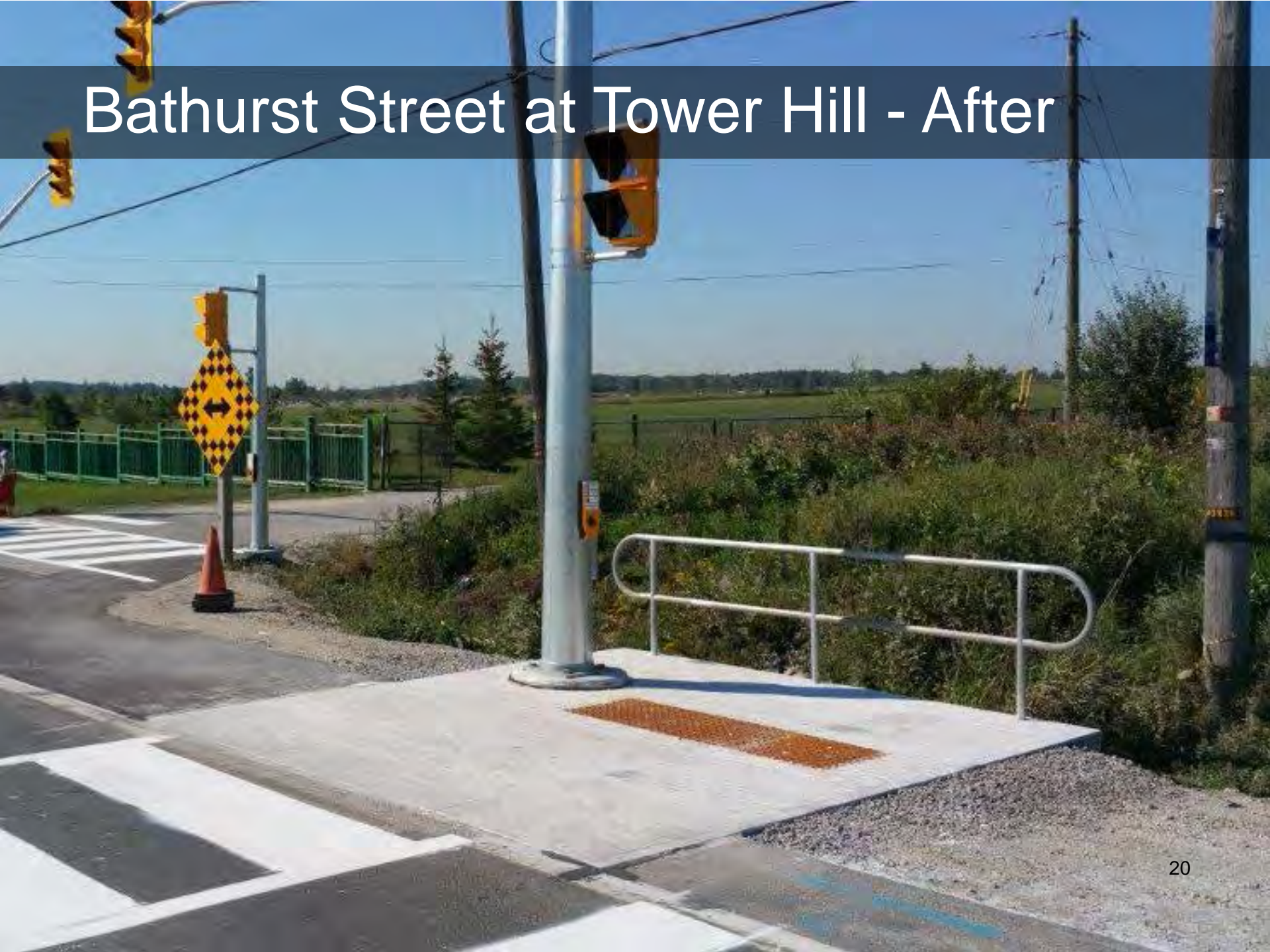
Dufferin Street at Kirby Road - After



Bathurst Street at Tower Hill - Before



Bathurst Street at Tower Hill - After



Driveways / Entrancesways

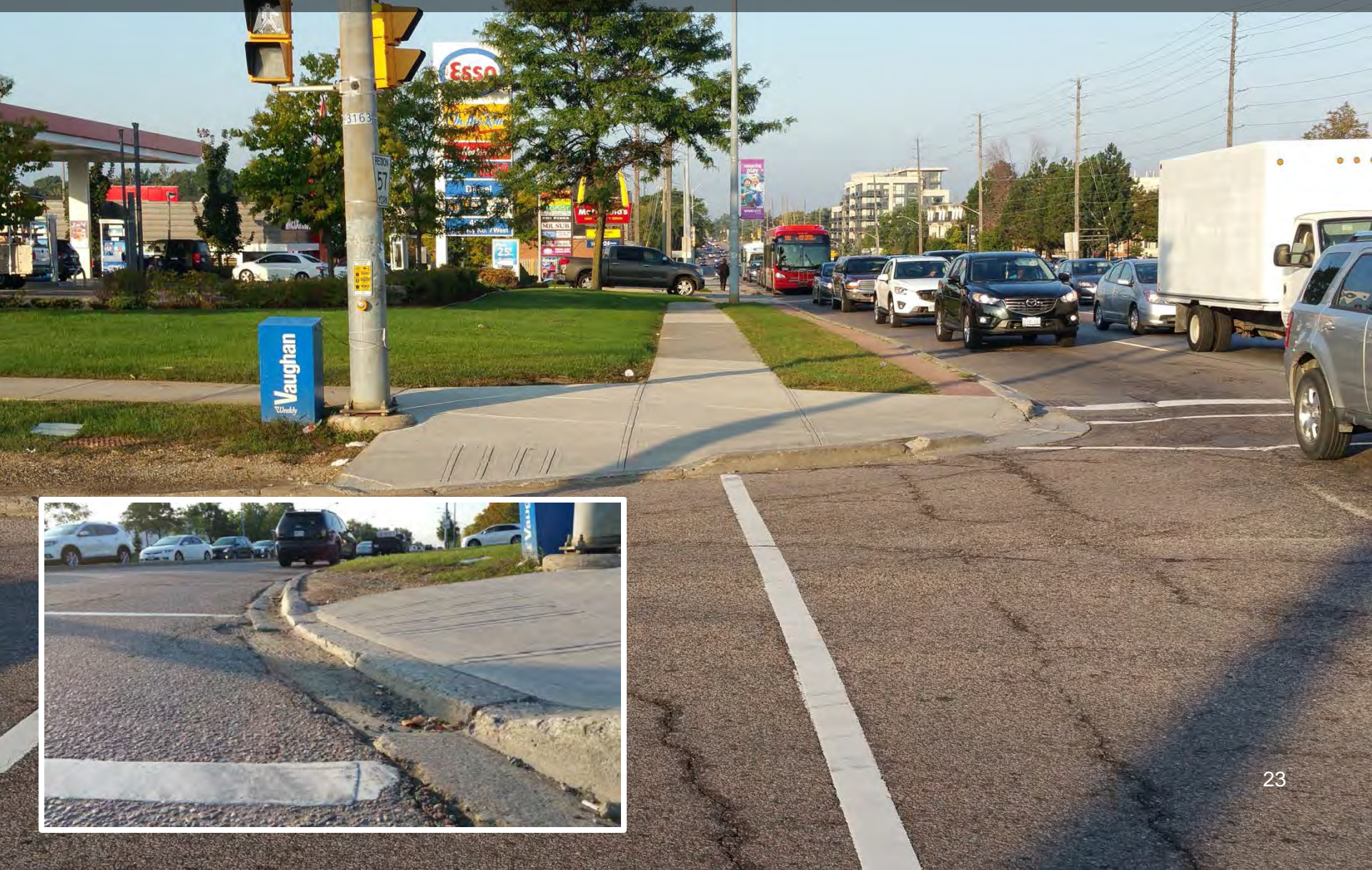
- Some municipalities specify asphalt through driveways and entrancesways
- Solution is to have all sidewalks continue across the driveway



Responding to Community Needs

- Highway 7 at Pine Valley Drive
- Responded to a complaint by a resident who uses a wheelchair
- The problem was with the curb drop acting like a barrier on the southwest corner
- The solution was to reconstruct the ramp

Highway 7 at Pine Valley Drive - Before



Highway 7 at Pine Valley Drive - After



Resident's Response

*“Thank you so much for your co-operation, assistance, good works and making the lives of [people] in our area safer and reassuring that someone really cares and acts. I actually tested the sidewalk fix [at the southwest corner of **Highway 7** and Pine Valley Drive] a few days ago and they did a great job. I feel so much safer making that crossing now. Barrier free is what it is all about.”*

City of Vaughan resident

Accessibility for Ontarians with Disabilities Act (AODA) Legislation

- Applies to:
 - “Extensive” work
 - Newly constructed or redeveloped public spaces
 - When practical
- Does not apply to:
 - Regular maintenance activities
- No deadline for complete implementation
- Adjust approach

Moving Forward

- Implement AODA elements at intersections
- Monitor and maintain current inventory
- Respond to community needs
- Evaluate and update standards as necessary
- Added \$20M in 10-Year Roads Capital Construction Program
- Modified 14 intersections in 2015
- Planning to modify 18 in 2016

Doug MacKay, P.Eng., PTOE, MPA

Manager, Engineering
Capital Planning and Delivery
Transportation Services

1-877-464-9675 ext. 77579
doug.mackay@york.ca

