

Building Social Economy through EPIC – Enterprise Promotion and Innovation Centre

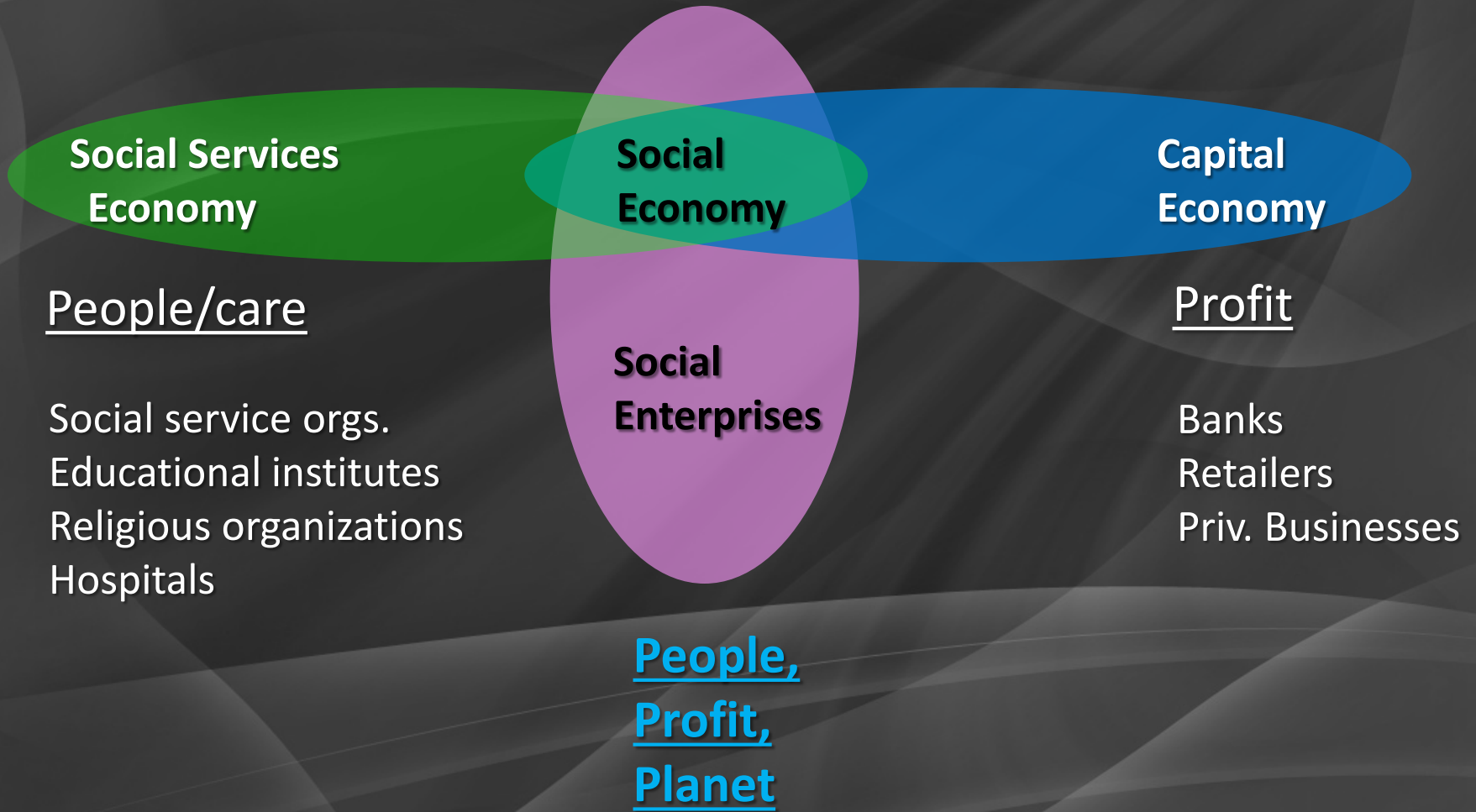
**Innovations in Community Economic
Development**

**Presentation to Human Services Planning Board
December 16, 2015**

- Founded in 2004, on the model of self reliance, community support and collaboration to serve marginalized communities through outside the box thinking and by implementing innovative solutions in health, economic & social areas.
- Serve 1500-2000 people / year in York Region.
- Annual Budget around \$600,000 with 4 full time and 5 part time employees. 60+ volunteers.
- Health and economic initiatives have received several national and international awards & recognitions.
- 14 research papers / presentations since 2010.
- Funders: York Region, Ontario Trillium Foundation, United Way of Toronto & York Region, Ontario Ministry of Health & Long Term Care (through CHATS), Government of Canada, Mayor of Vaughan Gala, Michael Di Biase Foundation, EPIC,...

About Human Endeavour

Building a Caring Economy



THINK, it is a smart economic solution

What is Social Economy?

- EPIC is a Social Economy incubator started in 2010. A facility with equipment and professional services that creates income and career opportunities for individuals who face barriers. It also helps non-profit organizations become self reliant by establishing Social Enterprises (social purpose businesses).
- EPIC is replicable through franchising agreement.

Support for Individuals

- Training
- Placement
- Employment/income
- Linkage with the Industry
- Social & other services

Support for Organizations

- Collaboration
- Training, feasibility, support
- Franchising of EPIC model
- Build capacity to enterprise & sustain

What is EPIC?

Enabling Individuals & Organizations

EPIC Social Enterprises at Human Endeavour

Independent

EPIC Georgina in Sutton run by GTTI

A new location in Jan. 2016

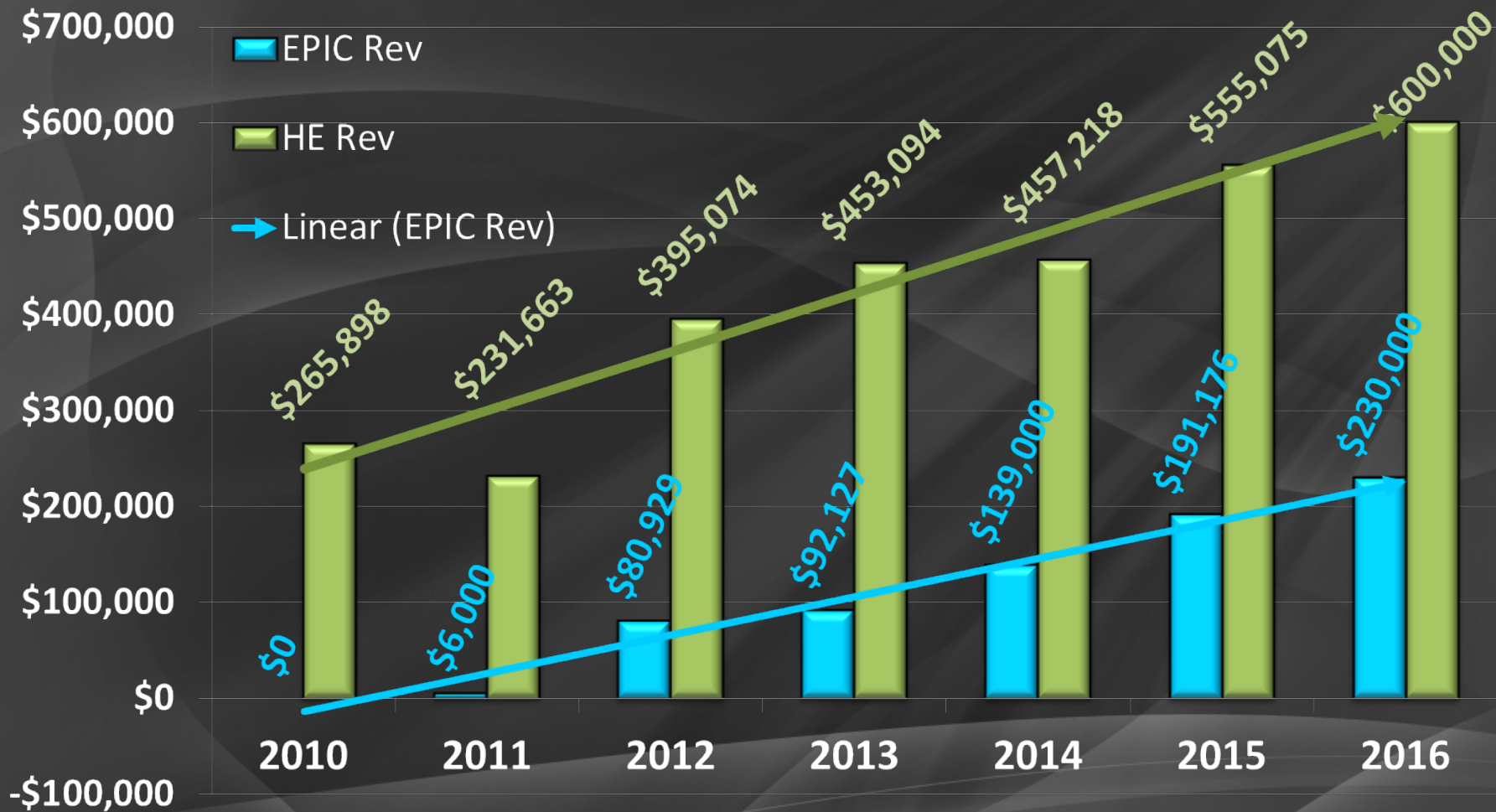


EPIC Social Enterprises for Income, Training & Placement

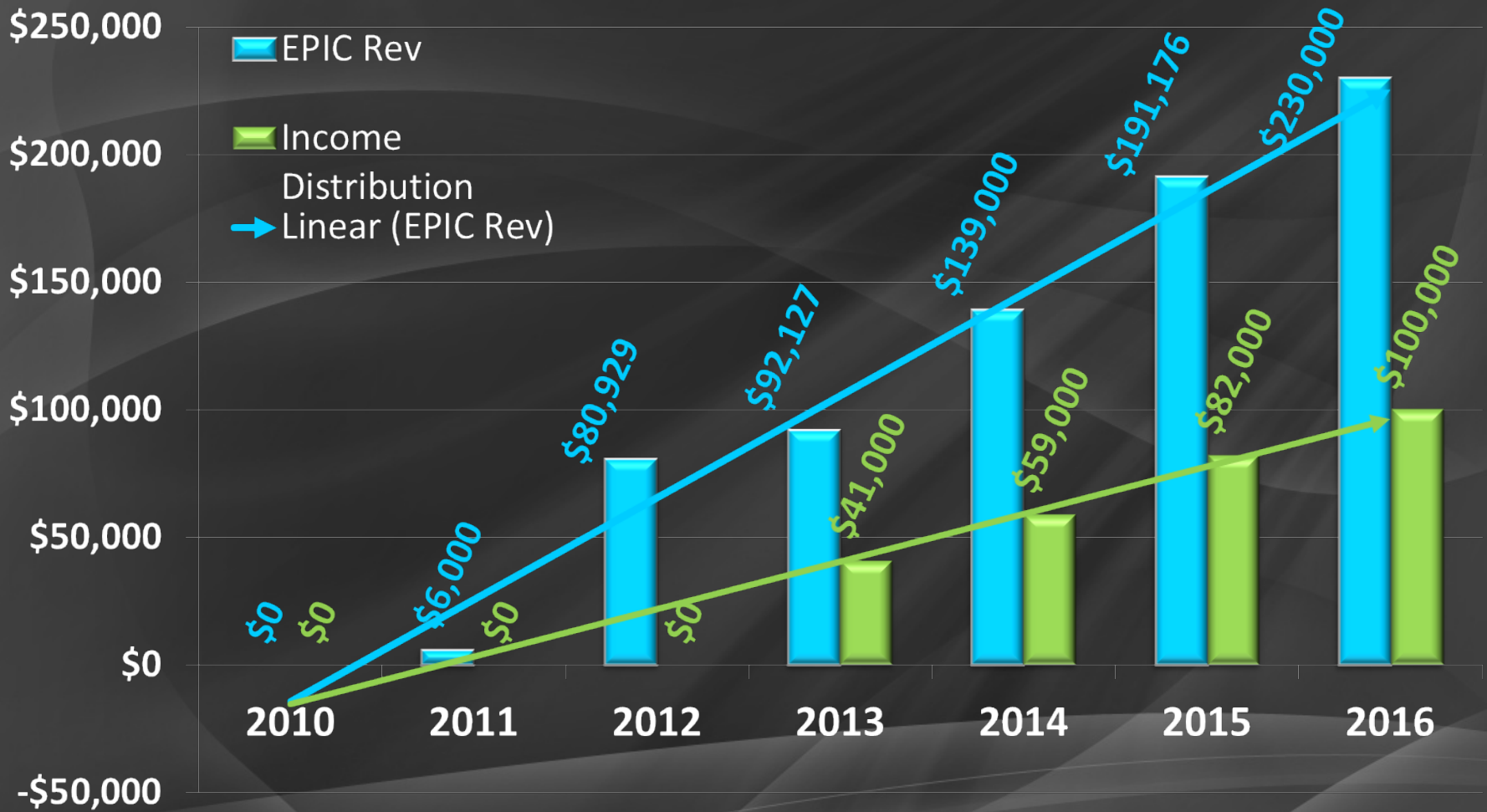
- Encourages outside the box thinking, innovation and risk taking in the non-profit sector
- Enterprises non-profits and improves their sustainability
- Improves efficiency
- Reduces dependency on funders
- Self reliance to act without waiting for funding

- Social Enterprises provide real hands on training
- Creates career clarity for youth through placements
- Newcomers get Canadian experience & income
- Provides working environment for people with disabilities
- Prepares how to succeed in uncertain job environment
- Links people to relative industries
- Promotes social entrepreneurship

Why Social Economy?



EPIC Performance: HE & EPIC Revenue



EPIC Performance: EPIC Revenue & Income Distribution

Impact areas	2010-11	2011-12	2012-13	2013-14	2014-15	2015-16 (OTF target)
Jobs (FT/PT/Con.)created			12	18	24	24
Training/placement			48	66	72.6	80
Volunteers involved			18	64	77	92
Volunteer hours			5225	6363	7636	9163
Organizations trained			24	25	?	?
Model shared with Orgs.				125+	1000+	
Research presentations	2	1	1	1	2	1

Ontario Trillium Foundation has set sustainability as a target for EPIC through its own revenues by 2016. We are on track for it.

EPIC Performance: Others

Thank You! Q & A

For more info, contact

Human Endeavour noor.din@humanendeavour.org

Cell: 416-726-3252

Address: 439 Glenkindie Ave. Vaughan, ON, L6A 2A2 905-553-9291