

Memorandum

TO: Committee of the Whole

FROM: Daniel Kostopoulos, P.Eng.
Commissioner of Transportation Services

DATE: November 5, 2015

RE: York Region Transit (YRT/Viva) Ridership Statistics –
2015 Third Quarter

This memorandum provides an overview of YRT/Viva ridership statistics for the third Quarter (Q3) of 2015, representing the months from July to September 2015.

YRT/Viva 2015 Q3 revenue ridership was 5.34 million, representing a decrease of approximately 214,300 revenue riders, or a decrease of 3.9 per cent compared to Q3 2014.

There were 63 weekdays, 13 Saturdays and 16 Sundays/Holidays in both Q3 2015 and Q3 2014. There were 5 additional school days in September 2014 compared to September 2015.

During Q3 2015, the average price of gasoline decreased from \$1.32 per litre to \$1.12 per litre compared to Q3 2014, representing a \$0.20 per litre decrease, or a decrease of 15 per cent.

The Greater Toronto and Hamilton Area (GTHA) hosted the Toronto 2015 Pan Am and Parapan Am Games (Games) from July 7 to 26, 2015 and from August 7 to 15, 2015. In anticipation of increased transit use during the events, YRT/Viva provided added services to venues such as Angus Glen Golf Club, Atos Markham Centre and the Canadian Tennis Centre and Stadium at York University. Approximately 19,000 spectators, volunteers and games staff used YRT/Viva services over the duration of the Games. During the heaviest Games travel periods, over 20 additional buses were available to supplement regular scheduled transit service.

Weather

Total precipitation in Q3 2014^[1] was 382.8 millimetres, compared to 148.9 millimetres in Q3 2015^[1]. The average temperature was 18.4 degrees Celsius in Q3 2014^[1] and 20.2 degrees Celsius in Q3 2015^[1].

Employment

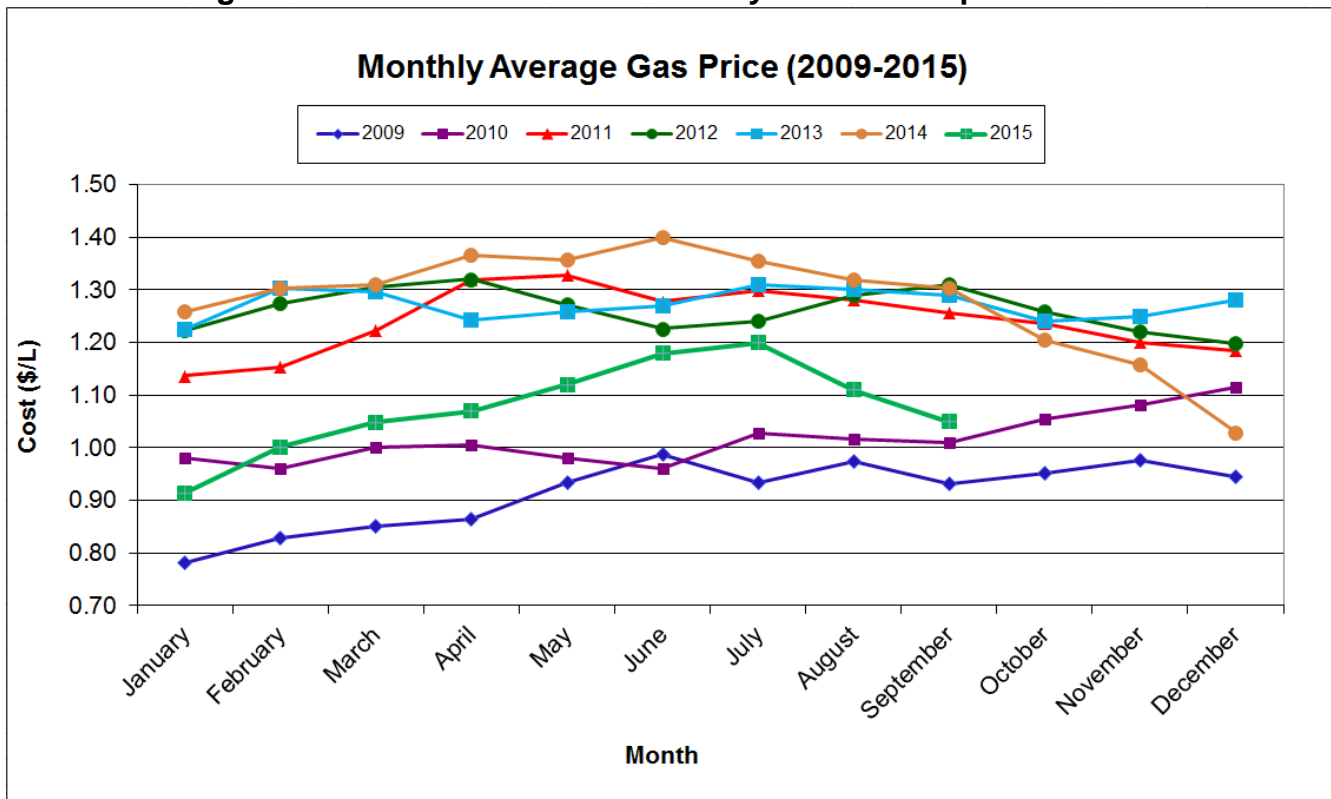
The national unemployment rate in Q3 2015 saw an increase compared to Q3 2014. The national unemployment rate in July 2015^[2] was 6.8 per cent, down 0.2 per cent from 7.0 per cent in July 2014. In August 2015^[2], the national unemployment rate was 7.0 per cent, same as August 2014. In September 2015^[2], the national unemployment rate was 7.1 per cent, up 0.3 per cent from 6.8 per cent in September 2014.

York Region is located within the Employment Insurance Economic Region of Toronto (Economic Region of Toronto) which recorded an unemployment rate of 6.9 per cent in July 2015^[3], a decrease of 0.9 per cent compared to 7.8 per cent in July 2014. In August 2015^[3], the Economic Region of Toronto recorded an unemployment rate of 6.6 per cent, a decrease of 1.5 per cent compared to 8.1 per cent in August 2014. In September 2015^[3], the Economic Region of Toronto recorded an unemployment rate of 6.8 per cent, a decrease of 1.5 per cent compared to 8.3 per cent in September 2014.

Gas Prices

Average gasoline prices decreased from \$1.32 per litre in Q3 2014^[4] to \$1.12 per litre in Q3 2015^[5], a decrease of \$0.20 per litre. This information is reflected in **Figure 1** which depicts historical gasoline prices since 2009.

Figure 1: Gas Prices between January 2009 and September 2015



Mobility Plus

Mobility Plus ridership increased 3.8 per cent from 90,383 riders in Q3 2014 to 93,784 in Q3 2015, resulting in 3,401 additional rides. This was due to additional ridership being accommodated in the midday and evening hours, additional day program trips, trips to Pan Am and Parapan Am Games, and comfortable summer weather in Q3 2015.

Conclusion

YRT/Viva will continue assessing ridership trends while making schedule adjustments to address customer concerns.

Staff will monitor routes travelling through the completed rapidway and construction zones to identify increases and decreases in ridership.

YRT/Viva will continue to contact GO Transit and adjacent transit agencies to identify ridership trends within the GTA. Customer feedback regarding transit services will be monitored through on-street operations, social media and the Contact Centre.

Daniel Kostopoulos, P.Eng.
Commissioner of Transportation Services

6350549

Notes:

^[1] Historical Climate Data, Toronto Buttonville Airport, Ontario. Retrieved from <http://climate.weather.gc.ca/>. Retrieved date: October 9, 2015.

^[2] Labour Force Survey. July 2015, August 2015, September 2015, Statistics Canada. Retrieved from <http://www.statcan.gc.ca/subjects-sujets/labour-travail/lfs-epa/lfs-epa-eng.htm>. Retrieved date: October 9, 2015

^[3] EI Economic Region of Toronto – Unemployment Rates for the EI Economic Regions. *Human Resources and Skills Development Canada*. Retrieved from <http://srv129.services.gc.ca/rbin/eng/rates.aspx?id=2014#data>. Retrieved date: October 9, 2015

^[4] Fuel Price Data. (2014). *Ministry of Energy*. Retrieved from <http://www.energy.gov.on.ca/en/fuel-prices/?fuel=REG&yr=2014>. Retrieved date: October 2, 2015

^[5] Fuel Price Data. (2015). *Ministry of Energy*. Retrieved from <http://www.energy.gov.on.ca/en/fuel-prices/?fuel=REG&yr=2015>. Retrieved date: October 2, 2015

YORK REGION TRANSIT / VIVA - MONTHLY RIDERSHIP SUMMARY (Actual)

July 2015

Rev: August 13, 2015

Jul-15	22 weekdays, 4 Saturdays, 5 Sunday/Holidays
Jul-14	22 weekdays, 4 Saturdays, 5 Sunday/Holidays

YRT Route #	Route Name	2014			TOTAL BOARDINGS (MONTH)			TOTAL BOARDINGS (YEAR TO DATE)			2015			Notes
		Avg Wkdy Boardings	Avg Sat Boardings	Avg Sn/Hol Boardings	2014	2015	Percentage ('15 vs '14)	2014	2015	Percentage ('15 vs '14)	Avg Wkdy Boardings	Avg Sat Boardings	Avg Sn/Hol Boardings	
1 ^[1]	Highway 7	1,979	944	416	49,596	39,608	-20.1%	297,436	266,133	-10.5%	1,550	686	533	Rapidway opening (Bayview to Cedarland); Ridership migration to Viva purple/pink
2 ^[1]	Milliken	1,889	846	359	47,031	47,725	1.5%	326,618	331,661	1.5%	1,903	855	432	Stable ridership
3 ^[1]	Thornhill	1,361	474	386	33,925	27,287	-19.6%	272,924	234,333	-14.1%	1,097	356	320	Weekday frequency reduction January 2015
8	Kennedy	1,428	703	468	36,753	38,530	4.8%	245,350	250,899	2.3%	1,504	711	483	Stable ridership; Increased ridership to Toronto 2015 Pan Am Games (July 10-26, 2015)
9 ^[1]	Ninth Line	253	-	-	5,642	5,554	-1.6%	42,830	41,235	-3.7%	251	-	-	Ridership migration to Route 15
14	14th Avenue	410	-	-	9,096	8,742	-3.9%	87,654	92,188	5.2%	395	-	-	Stable ridership
15	Stouffville	26	18	10	704	999	41.9%	2313	5,741	148.2%	40	17	9	New route implemented February 23, 2014
16	16th Ave	1,652	987	626	43,623	43,439	-0.4%	257,346	272,841	6.0%	1,604	1,114	706	Stable ridership
18	Bur Oak	453	104	-	10,442	11,646	11.5%	118,617	133,308	12.4%	505	122	-	General growth; Route restructured to operate along Angus Glen Blvd in April 2015
25	Major Mackenzie	640	-	-	14,129	13,953	-1.2%	90,544	94,204	4.0%	632	-	-	Stable ridership
40	Unionville Local	287	117	93	7,305	8,009	9.6%	79,449	81,266	2.3%	313	144	101	Stable ridership
41	Markham Local	214	71	58	5,329	5,466	2.6%	42,269	41,469	-1.9%	215	97	67	Stable ridership
42	Berczy	73	-	-	1,608	618	-61.6%	18,225	11,004	-39.6%	28	-	-	Ridership migration to Route 204
45	Mingay	46	-	-	1,020	1,197	17.4%	10,818	12,516	15.7%	54	-	-	General growth
201	Markham GO Shuttle	77	-	-	1,695	1,738	2.5%	12,149	13,616	12.1%	79	-	-	Stable ridership
202	Unionville GO Shuttle	131	-	-	2,887	3,058	5.9%	19,749	20,027	1.4%	139	-	-	Stable ridership
203	Milliken GO Shuttle	60	-	-	1,322	1,149	-13.1%	9,071	8,402	-7.4%	52	-	-	Decreased travel to GO Station
204	Berczy GO Shuttle	-	-	-	-	749	-	-	5,260	-	34	-	-	New route implemented August 30, 2014; Ridership migration from Route 42
300 ^[1]	Business Express	412	-	-	9,123	10,042	10.1%	57,802	57,645	-0.3%	455	-	-	General growth
301 ^[1]	Markham Express	167	-	-	3,696	4,177	13.0%	27,183	26,403	-2.9%	189	-	-	General growth
302 ^[1]	Unionville Express	213	-	-	4,717	4,477	-5.1%	31,626	30,038	-5.0%	203	-	-	Stable ridership
303 ^[1]	Bur Oak Express	426	-	-	9,400	10,334	9.9%	65,446	69,461	6.1%	469	-	-	General growth
304 ^[1]	Mount Joy Express	303	-	-	6,700	7,319	9.2%	42,843	46,868	9.4%	332	-	-	General growth
522	Markham Community Bus	81	68	-	2,058	2,155	4.7%	13,240	14,087	6.4%	82	86	-	Stable ridership
	Markham Total	12,581	4,332	2,416	307,801	297,971	-3.2%	2,171,502	2,160,605	-0.5%	12,125	4,188	2,651	
TTC 17A ^[1]	Birchmount	223	-	-	4,906	3,740	-23.8%	29,805	24,618	-17.4%	170	-	-	Decreased employment travel
TTC 24D, 224B/C/D ^[1]	Vic Park North (Woodbine)	1,012	99	57	22,959	23,463	2.2%	160,338	163,592	2.0%	1,030	112	70	Stable ridership
TTC 68B ^[1]	Warden North	843	320	210	20,876	20,881	0.0%	152,717	152,035	-0.4%	837	363	203	Stable ridership
TTC 102D ^[1]	Markham Rd	979	353	219	24,045	21,844	-9.2%	176,002	169,109	-3.9%	874	379	220	Decreased employment travel
TTC 129A ^[1]	McCowan North	2,262	1,081	743	57,803	56,222	-2.7%	428,281	415,946	-2.9%	2,238	1,024	578	Stable ridership
	TTC (Markham) Total	5,319	1,853	1,229	130,589	126,150	-3.4%	947,143	925,300	-2.3%	5,149	1,878	1,071	
	Markham & TTC Total	17,900	6,185	3,645	438,390	424,121	-3.3%	3,118,645	3,085,905	-1.0%	17,274	6,066	3,722	
4/4A ^[1]	Major Mackenzie	3,427	2,238	1,356	91,634	92,319	0.7%	588,993	592,184	0.5%	3,437	1,968	1,660	Stable ridership
5 ^[1]	Clark	1,279	316	-	29,566	29,182	-1.3%	228,277	238,397	4.4%	1,244	416	-	Stable ridership
7 ^[1]	Martin Grove	829	153	-	19,027	15,812	-16.9%	142,935	130,201	-8.9%	685	132	-	Frequency widened during the AM and PM weekday rush hour and midday periods in November 2014
10 ^[1]	Woodbridge	273	7	14	6,181	6,062	-1.9%	54,205	48,217	-11.0%	270	7	9	Stable ridership
12	Pine Valley	477	160	-	11,216	12,302	9.7%	73,724	77,177	4.7%	522	172	-	General growth
13	Islington	400	154	-	9,536	8,576	-10.1%	71,146	70,497	-0.9%	361	121	-	General decrease
20/20A ^[1]	Jane	3,721	2,859	1,693	103,110	109,972	6.7%	584,130	614,850	5.3%	3,979	2,910	1,910	Route 20A implemented September 2014; Increased ridership to Toronto 2015 Pan Am Games (July 10-26, 2015)
21	Vellore Local	141	-	-	3,127	7,004	124.0%	24,793	34,056	37.4%	245	-	-	Increased travel to Vaughan Mills Mall
22/22A ^[1]	King City	1,453	70	-	32,410	31,709	-2.2%	245,888	257,145	4.6%	1,421	65	-	Stable Ridership
23 ^[1]	Thornhill Woods	587	-	-	12,968	13,063	0.7%	103,078	97,830	-5.1%	589	-	-	Stable ridership
26	Maple Local	417	80	67	9,905	9,649	-2.6%	77,179	78,968	2.3%	396	97	101	Stable ridership
28	Huntington	30	-	-	665	1,022	53.7%	5,402	7,125	31.9%	46	-	-	Route restructured July 2014; Service extended to Huntington Road area
61	King Local	12	-	-	264	221	-16.3%	2,032	1,517	-25.3%	10	-	-	Decreased travel to GO Station
77/77A ^[1]	Highway 7	4,656	2,145	1,392	121,858	119,579	-1.9%	755,852	806,994	6.8%	4,756	2,031	1,226	Stable ridership; Route travels through vivaNext construction zone; Route 77A branch service introduced on July 14, 2014
99 (incl. 98E, 98/99) ^[1]	Yonge	2,414	1,302	1,093	64,112	53,263	-16.9%	420,568	354,293	-15.8%	1,862	1,445	1,260	Weekday frequency reduction January 2015
360 ^[1]	Vaughan Express	229	-	-	5,141	5,147	0.1%	36,507	38,479	5.4%	230	-	-	Stable ridership
760 ^[1]	Vaughan Mills/Wonderland	245	436	453	7,558	15,911	110.5%	15,945	26,976	69.2%	453	658	618	Increased ridership to Canada's Wonderland; Service restructured to travel via Hwy 407 in May 2015
	Vaughan Total	20,590	9,920	6,068	528,278	530,793	0.5%	3,430,654	3,474,906	1.3%	20,506	10,412	6,784	
TTC 35D ^[1]	Jane	895	-	-	19,690	17,666	-10.3%	139,253	129,201	-7.2%	803	-	-	Ridership migration to Route 20
TTC 105/105-B ^[1]	Dufferin North	2,064	707	521	50,841	47,905	-5.8%	355,936	335,272	-5.8%	1,923	796	483	Stable ridership
TTC 107B/C/D ^[1]	Keele North	2,319	639	356	55,354	54,136	-2.2%	412,032	391,141	-5.1%	2,237	853	302	Stable ridership
TTC 160 ^[1]	Bathurst North	726	431	240	18,896	16,089	-14.9%	127,550	115,244	-9.6%	603	392	251	General decrease
TTC 165D/F ^[1]	Weston Road North	1,536	654	438	38,598	38,381	-0.6%	297,157	283,401	-4.6%	1,438	1,120	453	Stable ridership
	TTC (Vaughan) Total	7,540	2,431	1,555	183,379	174,177	-5.0%	1,331,928	1,254,259	-5.8%	7,004	3,161	1,489	
	Vaughan & TTC Total	28,130	12,351	7,623	711,657	704,970	-0.9%	4,762,582	4,729,165	-0.7%	27,510	13,573	8,273	

[1] Route crosses municipal boundaries.

	YRT Route #	Route Name	2014			TOTAL BOARDINGS (MONTH)			TOTAL BOARDINGS (YEAR TO DATE)			2015			
			Avg Wkdy Boardings	Avg Sat Boardings	Avg Sn/Hol Boardings	2014	2015	Percentage ('15 vs '14)	2014	2015	Percentage ('15 vs '14)	Avg Wkdy Boardings	Avg Sat Boardings	Avg Sn/Hol Boardings	
Richmond Hill	80	Elgin Mills	638	209	173	15,789	16,197	2.6%	93,678	93,644	0.0%	646	201	224	Stable ridership
	81	Inspiration	106	-	-	2,345	2,559	9.1%	28,983	30,155	4.0%	116	-	-	General growth
	82	Valleymede	151	-	-	3,326	3,745	12.6%	47,004	50,401	7.2%	170	-	-	General growth
	83/83A	Trench	551	-	-	12,160	13,147	8.1%	131,238	142,782	8.8%	595	-	-	General growth
	84	Oak Ridges	64	18	-	1,486	1,248	-16.0%	25,519	23,632	-7.4%	55	9	-	Dial-a-Ride service converted to 60-minute on-request bookings effective February 2, 2015
	85/85C ^[1]	Rutherford	3,472	1,754	1,009	88,992	85,125	-4.3%	563,032	578,101	2.7%	3,290	1,546	1,220	Stable ridership
	86	Newkirk-Red Maple	613	220	-	14,406	15,069	4.6%	135,372	144,594	6.8%	641	229	-	General growth
	87 ^[1]	Autumn Hill	419	-	-	9,247	11,920	28.9%	63,931	75,892	18.7%	540	-	-	General growth
	88/88A ^[1]	Bathurst	4,030	2,479	1,878	108,570	107,189	-1.3%	732,759	775,895	5.9%	4,023	2,064	1,941	Stable ridership
	589/590	RH Community Bus	115	171	43	3,436	3,632	5.7%	26,935	24,059	-10.7%	138	73	59	Stable ridership
	90/90B ^[1]	Leslie	3,133	932	551	75,767	76,503	1.0%	493,254	521,203	5.7%	3,137	957	674	Stable ridership
	91/91A/91B/91E ^[1]	Bayview/Express	3,641	1,685	954	92,113	87,458	-5.1%	647,760	630,650	-2.6%	3,369	1,758	1,184	Stable ridership: Frequency reduction January 2015
	240	Mill Pond GO Shuttle	91	-	-	2,003	2,113	5.5%	16,265	15,222	-6.4%	96	-	-	Stable ridership
	241	Bev. Acres GO Shuttle	60	-	-	1,320	946	-28.3%	9,470	8,485	-10.4%	43	-	-	Decreased travel to GO Station
242	N. Richvale GO Shuttle	28	-	-	617	748	21.2%	4,516	4,671	3.4%	34	-	-	Increased travel to GO Station	
243	Redstone GO Shuttle	179	-	-	3,942	3,609	-8.4%	25,590	24,440	-4.5%	164	-	-	Decreased travel to GO Station	
244	Beaver Creek Shuttle	51	-	-	1,122	1,257	12.0%	7,418	7,731	4.2%	57	-	-	Increased travel to GO Station	
	Richmond Hill Total	17,342	7,468	4,608	436,641	432,465	-1.0%	3,052,724	3,151,557	3.2%	17,114	6,837	5,302		
Aurora	31 ^[1]	Aurora North	51	-	-	1,122	1,241	10.6%	12,849	12,942	0.7%	56	-	-	General growth
	32	Aurora South	226	20	-	5,088	5,051	-0.7%	64,342	65,741	2.2%	225	17	-	Stable ridership: Dial-a-Ride service converted to 60-minute on-request bookings effective February 2, 2015
	33/33A	Wellington	295	125	-	7,026	7,512	6.9%	71,652	74,615	4.1%	312	150	-	Stable ridership
	Aurora Total	572	145	-	13,236	13,804	4.3%	148,843	153,298	3.0%	593	167	-		
Newmarket, East Gwill., Georgina	44	Bristol	172	51	-	4,006	4,670	16.6%	39,665	41,140	3.7%	195	90	-	General growth
	50	Queensway	1,075	660	455	28,990	27,178	-6.3%	190,184	185,392	-2.5%	999	633	456	Stable ridership: vivaNext construction occurring along Davis Drive: Route 50B discontinued in April 2015
	51	Keswick Local	87	51	-	2,135	1,803	-15.6%	26,823	25,814	-3.8%	75	33	-	Route restructured January 2015
	52 ^[1]	Holland Landing	200	123	-	4,932	4,762	-3.4%	35,688	35,128	-1.6%	195	109	-	Stable ridership: Construction on 2nd Concession between Green Lane and Mount Albert Road and related detour
	54 ^[1]	Bayview	365	151	-	8,676	7,184	-17.2%	61,896	54,959	-11.2%	297	153	-	Schedule adjustments and reduced midday frequency implemented November 2014
	55/55B	Davis Drive	904	404	296	23,172	21,008	-9.3%	173,391	163,355	-5.8%	805	437	277	vivaNext construction occurring along Davis Drive: route travels through construction zone
	56	Gorham-Eagle	402	193	134	10,331	9,917	-4.0%	78,861	76,232	-3.3%	385	177	136	Stable ridership
	57/57A	Mulock	741	318	191	18,615	18,539	-0.4%	147,475	152,572	3.5%	744	295	171	Stable ridership
	58 ^[1]	Mount Albert	136	8	-	3,037	2,575	-15.2%	18,397	18,298	-0.5%	114	12	-	General decrease
	98 ^[1]	Yonge	620	371	320	16,823	18,389	9.3%	119,538	127,440	6.6%	665	421	396	General corridor growth
	222 ^[1]	Aurora-Nwmkl GO Shuttle	44	-	-	970	1,059	9.2%	7,073	7,901	11.7%	48	-	-	Increased travel to GO Station
223	Newmarket GO Shuttle	18	-	-	400	289	-27.8%	2,678	2,440	-8.9%	13	-	-	Decreased travel to GO Station	
520/521	Newmarket Community Bus	84	33	24	2,107	1,777	-15.7%	13,653	13,025	-4.6%	69	28	28	General decrease	
	Newmarket Total	4,848	2,363	1,420	124,194	119,150	-4.1%	915,321	903,696	-1.3%	4,604	2,388	1,464		
	YRT SUB-TOTAL	68,792	28,512	17,296	1,724,118	1,694,510	-1.7%	11,998,115	12,023,621	0.2%	67,095	29,031	18,761		
Viva ^[2]	blue/blue 'A' ^[1]	Yonge Corridor	18,167	12,947	9,747	502,339	482,733	-3.9%	3,371,096	3,219,925	-4.5%	17,527	12,584	9,267	Stable ridership
	purple ^[1]	Highway 7 Corridor	6,574	4,634	3,321	180,049	192,409	6.9%	1,372,414	1,365,063	-0.5%	7,008	4,993	3,636	Stable ridership: Increased ridership to Toronto 2015 Pan Am Games (July 10-26, 2015)
	pink ^[1]	Finch - Unionville	2,086	-	-	45,924	51,428	12.0%	343,825	346,780	0.9%	2,335	-	-	Increased ridership to Toronto 2015 Pan Am Games (July 10-26, 2015)
	orange (incl. Züm) ^[1]	Vaughan North-South Link	1,994	531	369	47,877	44,427	-7.2%	353,043	312,300	-11.5%	1,855	483	325	General corridor decrease
	green ^[1]	Markham North-South Link	602	-	-	13,324	13,306	-0.1%	97,575	88,211	-9.6%	601	-	-	Stable ridership
	Viva SUB-TOTAL	29,423	18,112	13,437	789,513	784,303	-0.7%	5,537,953	5,332,279	-3.7%	29,326	18,060	13,228		

[1] Route crosses municipal boundaries.

[2] Viva ridership data adjustment is derived on a monthly basis, and compensates for temporary malfunctions of on-board automatic passenger counter (APC) equipment, and/or for drivers not logging onto Init APC system.

Tot. Boardings	YRT/VIVA SYSTEM TOTAL	98,215	46,624	30,733	2,513,631	2,478,813	-1.4%	17,536,068	17,355,900	-1.0%	96,421	47,091	31,989	
-----------------------	------------------------------	---------------	---------------	---------------	------------------	------------------	--------------	-------------------	-------------------	--------------	---------------	---------------	---------------	--

Rev. Boardings	YRT/VIVA SYSTEM TOTAL	1,806,567	1,781,847	-1.4%	12,781,573	12,813,164	0.2%	69,310						
-----------------------	------------------------------	------------------	------------------	--------------	-------------------	-------------------	-------------	---------------	--	--	--	--	--	--

YORK REGION TRANSIT / VIVA - MONTHLY RIDERSHIP SUMMARY (Actual)

August 2015

Rev: Sept 14, 2015

Aug-15	20 weekdays, 5 Saturdays, 6 Sunday/Holidays
Aug-14	20 weekdays, 5 Saturdays, 6 Sunday/Holidays

YRT Route #	Route Name	2014			TOTAL BOARDINGS (MONTH)			TOTAL BOARDINGS (YEAR TO DATE)			2015			Notes
		Avg Wkdy Boardings	Avg Sat Boardings	Avg Sn/Hol Boardings	2014	2015	Percentage ('15 vs '14)	2014	2015	Percentage ('15 vs '14)	Avg Wkdy Boardings	Avg Sat Boardings	Avg Sn/Hol Boardings	
1 ^[1]	Highway 7	1,802	722	451	42,527	38,168	-10.2%	339,963	304,301	-10.5%	1,540	853	496	Rapidway opening (Bayview to Cedarland): Ridership migration to Viva purple/pink
2 ^[1]	Milliken	1,830	809	453	43,654	44,635	2.2%	370,272	376,296	1.6%	1,866	865	464	Stable ridership
3 ^[1]	Thornhill	1,198	409	375	28,396	24,412	-14.0%	301,320	258,745	-14.1%	990	453	363	Weekday frequency reduction January 2015
8	Kennedy	1,444	631	469	35,041	35,474	1.2%	280,391	286,373	2.1%	1,427	707	528	Stable ridership
9 ^[1]	Ninth Line	211	-	-	4,278	4,483	4.8%	47,108	45,718	-3.0%	223	-	-	Ridership migration to Route 15
14	14th Avenue	358	-	-	7,201	7,484	3.9%	94,855	99,672	5.1%	373	-	-	Stable ridership
15	Stouffville	26	17	8	662	797	20.4%	2975	6,538	119.8%	33	13	11	New route implemented February 23, 2014
16	16th Ave	1,466	935	668	38,201	37,574	-1.6%	295,547	310,415	5.0%	1,407	1,024	695	Stable ridership
18	Bur Oak	422	116	-	9,060	8,781	-3.1%	127,677	142,089	11.3%	398	156	-	General growth; Route restructured to operate along Angus Glen Blvd in April 2015
25	Major Mackenzie	565	-	-	11,345	11,912	5.0%	101,889	106,116	4.1%	594	-	-	Stable ridership
40	Unionville Local	234	98	89	5,776	6,134	6.2%	85,225	87,400	2.6%	249	113	92	Stable ridership
41	Markham Local	188	69	65	4,549	4,397	-3.3%	46,818	45,866	-2.0%	177	83	71	Stable ridership
42	Berczy	75	-	-	1,510	701	-53.6%	19,735	11,705	-40.7%	35	-	-	Ridership migration to Route 204
45	Mingay	52	-	-	1,046	1,283	22.7%	11,864	13,799	16.3%	64	-	-	General growth
201	Markham GO Shuttle	77	-	-	1,542	1,600	3.8%	13,691	15,216	11.1%	80	-	-	Stable ridership
202	Unionville GO Shuttle	113	-	-	2,265	2,601	14.8%	22,014	22,628	2.8%	130	-	-	Stable ridership
203	Milliken GO Shuttle	46	-	-	924	922	-0.2%	9,995	9,324	-6.7%	46	-	-	Decreased travel to GO Station
204	Berczy GO Shuttle	-	-	-	-	640	-	-	5,900	-	32	-	-	New route implemented August 30, 2014; Ridership migration from Route 42
300 ^[1]	Business Express	380	-	-	7,658	8,482	10.8%	65,460	66,127	1.0%	423	-	-	General growth
301 ^[1]	Markham Express	162	-	-	3,253	3,429	5.4%	30,436	29,832	-2.0%	171	-	-	General growth
302 ^[1]	Unionville Express	202	-	-	4,057	3,847	-5.2%	35,683	33,885	-5.0%	192	-	-	Stable ridership
303 ^[1]	Bur Oak Express	404	-	-	8,106	9,451	16.6%	73,552	78,912	7.3%	472	-	-	General growth
304 ^[1]	Mount Joy Express	281	-	-	5,644	6,131	8.6%	48,487	52,999	9.3%	306	-	-	General growth
522	Markham Community Bus	70	78	-	1,794	2,135	19.0%	15,034	16,222	7.9%	89	70	-	Stable ridership
Markham Total		11,606	3,884	2,578	268,489	265,473	-1.1%	2,439,991	2,426,078	-0.6%	11,317	4,337	2,720	
TTC 17A ^[1]	Birchmount	223	-	-	4,460	3,400	-23.8%	34,265	28,018	-18.2%	170	-	-	Decreased employment travel; Route extension to Highway 7, June 2015
TTC 24D, 224B/C/D ^[1]	Vic Park North (Woodbine)	1,012	94	66	21,111	21,497	1.8%	181,449	185,089	2.0%	1,030	96	68	Stable ridership
TTC 68B ^[1]	Warden North	843	320	210	19,720	19,773	0.3%	172,437	171,808	-0.4%	837	363	203	Stable ridership
TTC 102D ^[1]	Markham Rd	979	353	219	22,659	20,695	-8.7%	198,661	189,804	-4.5%	874	379	220	Decreased employment travel
TTC 129A ^[1]	McCowan North	2,262	1,081	743	55,103	53,348	-3.2%	483,384	469,294	-2.9%	2,238	1,024	578	Stable ridership
TTC (Markham) Total		5,319	1,848	1,238	123,053	118,713	-3.5%	1,070,196	1,044,013	-2.4%	5,149	1,862	1,069	
Markham & TTC Total		16,925	5,732	3,816	391,542	384,186	-1.9%	3,510,187	3,470,091	-1.1%	16,466	6,199	3,789	
4/4A ^[1]	Major Mackenzie	3,229	1,965	2,041	87,407	83,965	-3.9%	676,400	676,149	0.0%	3,202	1,956	1,608	Stable ridership
5 ^[1]	Clark	1,164	310	-	24,994	25,374	1.5%	253,271	263,771	4.1%	1,166	382	-	Stable ridership
7 ^[1]	Martin Grove	778	184	-	16,707	13,379	-19.9%	159,642	143,580	-10.1%	623	145	-	Frequency reduction during the AM and PM weekday rush hour and midday periods in November 2014
10 ^[1]	Woodbridge	250	6	12	5,181	5,301	2.3%	59,386	53,518	-9.9%	251	30	10	Stable ridership
12	Pine Valley	475	208	-	10,623	10,471	-1.4%	84,347	87,648	3.9%	470	192	-	Stable ridership
13	Islington	364	164	-	8,201	7,825	-4.6%	79,347	78,322	-1.3%	355	117	-	Stable ridership
20/20A ^[1]	Jane	3,862	2,586	2,154	104,247	108,051	3.6%	688,377	722,901	5.0%	3,959	3,096	2,041	Stable ridership; Route 20A implemented September 2014
21	Vellore Local	122	-	-	2,476	3,925	58.5%	27,269	37,981	39.3%	194	-	-	Increased travel to Vaughan Mills Mall
22/22A ^[1]	King City	1,299	65	-	26,452	26,519	0.3%	272,340	283,664	4.2%	1,306	55	-	Stable Ridership
23 ^[1]	Thornhill Woods	571	-	-	11,486	11,204	-2.5%	114,564	109,034	-4.8%	557	-	-	Stable ridership
26	Maple Local	392	71	74	8,702	8,218	-5.6%	85,881	87,186	1.5%	352	103	100	Stable ridership
28	Huntington	60	-	-	1,204	1,070	-11.1%	6,606	8,195	24.1%	53	-	-	Route restructured July 2014; Service extended to Huntington Road area
61	King Local	9	-	-	180	244	35.6%	2,212	1,761	-20.4%	12	-	-	Increased travel to GO Station
77/77A ^[1]	Highway 7	4,552	2,241	1,327	110,825	108,208	-2.4%	866,677	915,202	5.6%	4,519	2,067	1,148	Stable ridership; Route travels through vivaNext construction zone; Route 77A branch service introduced on July 14, 2014
99 (incl. 98E, 98/99) ^[1]	Yonge	2,128	801	1,367	55,122	49,718	-9.8%	475,690	404,011	-15.1%	1,765	1,378	1,221	Weekday frequency reduction January 2015
360 ^[1]	Vaughan Express	219	-	-	4,436	4,777	7.7%	40,943	43,256	5.6%	237	-	-	Stable ridership
760 ^[1]	Vaughan Mills/Wonderland	370	515	345	12,216	18,285	49.7%	28,161	45,261	60.7%	514	759	653	Increased ridership to Canada's Wonderland; Service restructured to travel via Hwy 407 in May 2015
Vaughan Total		19,844	9,116	7,320	490,459	486,534	-0.8%	3,921,113	3,961,440	1.0%	19,535	10,280	6,781	
TTC 35D ^[1]	Jane	895	-	-	17,900	16,060	-10.3%	157,153	145,261	-7.6%	803	-	-	Ridership migration to Route 20
TTC 105/105-B ^[1]	Dufferin North	2,064	707	521	47,941	45,338	-5.4%	403,877	380,610	-5.8%	1,923	796	483	Stable ridership
TTC 107B/C/D ^[1]	Keele North	2,319	639	356	51,711	50,817	-1.7%	463,743	441,958	-4.7%	2,237	853	302	Stable ridership
TTC 160 ^[1]	Bathurst North	726	431	240	18,115	15,526	-14.3%	145,665	130,770	-10.2%	603	392	251	General decrease
TTC 165D/F ^[1]	Weston Road North	1,536	654	438	36,618	37,078	1.3%	333,775	320,479	-4.0%	1,438	1,120	453	Stable ridership
TTC (Vaughan) Total		7,540	2,431	1,555	172,285	164,819	-4.3%	1,504,213	1,419,078	-5.7%	7,004	3,161	1,489	
Vaughan & TTC Total		27,384	11,547	8,875	662,744	651,353	-1.7%	5,425,326	5,380,518	-0.8%	26,539	13,441	8,270	

[1] Route crosses municipal boundaries.

	YRT Route #	Route Name	2014			TOTAL BOARDINGS (MONTH)			TOTAL BOARDINGS (YEAR TO DATE)			2015			
			Avg Wkdy Boardings	Avg Sat Boardings	Avg Sn/Hol Boardings	2014	2015	Percentage ('15 vs '14)	2014	2015	Percentage ('15 vs '14)	Avg Wkdy Boardings	Avg Sat Boardings	Avg Sn/Hol Boardings	
Richmond Hill	80	Elgin Mills	505	191	174	12,155	10,952	-9.9%	105,833	104,596	-1.2%	454	179	155	Stable ridership
	81	Inspiration	102	-	-	2,047	1,984	-3.1%	31,030	32,139	3.6%	99	-	-	General growth
	82	Valleymede	146	-	-	2,923	2,845	-2.7%	49,927	53,246	6.6%	142	-	-	General growth
	83/83A	Trench	375	-	-	7,533	8,319	10.4%	138,771	151,101	8.9%	414	-	-	General growth
	84	Oak Ridges	57	13	-	1,207	1,157	-4.1%	26,726	24,789	-7.2%	56	8	-	Dial-a-Ride service converted to 60-minute on-request bookings effective February 2, 2015
	85/85C ^[1]	Rutherford	3,415	1,594	1,182	83,783	82,802	-1.2%	646,815	660,903	2.2%	3,263	1,881	1,283	Stable ridership
	86	Newkirk-Red Maple	580	211	-	12,689	13,783	8.6%	148,061	158,377	7.0%	630	228	-	General growth
	87 ^[1]	Autumn Hill	266	-	-	5,344	5,568	4.2%	69,275	81,460	17.6%	277	-	-	Stable ridership
	88/88A ^[1]	Bathurst	3,921	2,131	2,219	103,071	99,154	-3.8%	835,830	875,049	4.7%	3,815	2,333	1,746	Stable ridership
	589/590	RH Community Bus	154	74	77	3,916	3,174	-18.9%	30,851	27,233	-11.7%	109	88	91	General decrease
	90/90B ^[1]	Leslie	3,064	907	565	69,548	65,587	-5.7%	562,802	586,790	4.3%	2,824	917	709	Stable ridership
	91/91A/91B/91E ^[1]	Bayview/Express	3,311	1,594	1,013	80,650	81,838	1.5%	728,410	712,488	-2.2%	3,259	1,837	1,184	Stable ridership; Frequency reduction January 2015
	240	Mill Pond GO Shuttle	81	-	-	1,620	1,821	12.4%	17,885	17,043	-4.7%	91	-	-	Stable ridership
	241	Bev. Acres GO Shuttle	59	-	-	1,180	861	-27.0%	10,650	9,346	-12.2%	43	-	-	Decreased travel to GO Station; Summer ridership decline
242	N. Richvale GO Shuttle	32	-	-	640	660	3.1%	5,156	5,331	3.4%	33	-	-	Stable ridership	
243	Redstone GO Shuttle	168	-	-	3,362	2,940	-12.6%	28,952	27,380	-5.4%	147	-	-	Decreased travel to GO Station; Summer ridership decline	
244	Beaver Creek Shuttle	50	-	-	1,001	1,061	6.0%	8,419	8,792	4.4%	53	-	-	Increased travel to GO Station	
	Richmond Hill Total	16,286	6,715	5,230	392,669	384,506	-2.1%	3,445,393	3,536,063	2.6%	15,709	7,471	5,168		
Aurora	31 ^[1]	Aurora North	48	-	-	965	1,185	22.8%	13,814	14,127	2.3%	59	-	-	General growth
	32	Aurora South	201	17	-	4,128	4,034	-2.3%	68,470	69,775	1.9%	196	16	-	Stable ridership; Dial-a-Ride service converted to 60-minute on-request bookings effective February 2, 2015
	33/33A	Wellington	284	129	-	6,376	6,580	3.2%	78,028	81,195	4.1%	301	103	-	Stable ridership
		Aurora Total	533	146	-	11,469	11,799	2.9%	160,312	165,097	3.0%	556	119	-	
Newmarket, East Gwill., Georgina	44	Bristol	172	60	-	3,757	3,978	5.9%	43,422	45,118	3.9%	177	83	-	General growth
	50	Queensway	1,042	690	502	27,715	24,895	-10.2%	217,899	210,287	-3.5%	947	532	486	Stable ridership; vivaNext construction occurring along Davis Drive; Route 50B discontinued in April 2015
	51	Keswick Local	115	37	-	2,498	1,783	-28.6%	29,321	27,597	-5.9%	80	33	-	Route restructured January 2015
	52 ^[1]	Holland Landing	209	116	-	4,809	4,513	-6.2%	40,497	39,641	-2.1%	201	92	-	Stable ridership; Construction on 2nd Concession between Green Lane and Mount Albert Road and related detour
	54 ^[1]	Bayview	352	140	-	7,776	6,434	-17.3%	69,672	61,393	-11.9%	289	122	-	Schedule adjustments and reduced midday frequency implemented November 2014
	55/55B	Davis Drive	897	494	324	22,526	19,596	-13.0%	195,917	182,951	-6.6%	790	418	259	vivaNext construction occurring along Davis Drive; route travels through construction zone
	56	Gorham-Eagle	399	186	150	9,863	9,058	-8.2%	88,724	85,290	-3.9%	363	181	141	Stable ridership
	57/57A	Mulock	712	327	191	17,143	16,677	-2.7%	164,618	169,249	2.8%	699	323	165	Stable ridership
	58 ^[1]	Mount Albert	132	10	-	2,715	2,244	-17.3%	21,112	20,542	-2.7%	109	8	-	General decrease
	98 ^[1]	Yonge	577	389	362	15,758	17,357	10.1%	135,296	144,797	7.0%	648	408	380	General corridor growth
	222 ^[1]	Aurora-Nwmkt GO Shuttle	43	-	-	866	1,105	27.6%	7,939	9,006	13.4%	55	-	-	Increased travel to GO Station
223	Newmarket GO Shuttle	17	-	-	341	242	-29.0%	3,019	2,682	-11.2%	12	-	-	Decreased travel to GO Station; vivaNext construction occurring along Davis Drive; route travels through construction zone	
520/521	Newmarket Community Bus	79	28	20	1,846	1,566	-15.2%	15,499	14,591	-5.9%	67	26	15	General decrease; vivaNext construction occurring along Davis Drive; route travels through construction zone	
	Newmarket Total	4,746	2,477	1,549	117,613	109,448	-6.9%	1,032,934	1,013,144	-1.9%	4,437	2,226	1,446		
	YRT SUB-TOTAL	65,874	26,617	19,470	1,576,037	1,541,292	-2.2%	13,574,152	13,564,913	-0.1%	63,707	29,456	18,673		
Viva ^[2]	blue/blue 'A' ^[1]	Yonge Corridor	17,681	12,283	9,668	474,073	464,090	-2.1%	3,845,169	3,684,015	-4.2%	17,304	12,284	9,422	Stable ridership
	purple ^[1]	Highway 7 Corridor	6,342	4,274	3,432	169,065	181,020	7.1%	1,541,479	1,546,083	0.3%	6,871	4,518	3,489	Increased ridership to Toronto 2015 Para Pan Am Games (August 7-14, 2015)
	pink ^[1]	Finch - Unionville	2,005	-	-	40,203	43,880	9.1%	384,028	390,660	1.7%	2,194	-	-	Increased ridership to Toronto 2015 Para Pan Am Games (August 7-14, 2015)
	orange (incl. Züm) ^[1]	Vaughan North-South Link	1,762	568	422	40,647	38,960	-4.2%	393,690	351,260	-10.8%	1,730	482	321	General corridor decrease
	green ^[1]	Markham North-South Link	609	-	-	12,213	11,590	-5.1%	109,788	99,801	-9.1%	578	-	-	Stable ridership
		Viva SUB-TOTAL	28,399	17,125	13,522	736,201	739,540	0.5%	6,274,154	6,071,819	-3.2%	28,677	17,284	13,232	

[1] Route crosses municipal boundaries.

[2] Viva ridership data adjustment is derived on a monthly basis, and compensates for temporary malfunctions of on-board automatic passenger counter (APC) equipment, and/or for drivers not logging onto Init APC system.

Tot. Boardings	YRT/VIVA SYSTEM TOTAL	94,273	43,742	32,992	2,312,238	2,280,832	-1.4%	19,848,306	19,636,732	-1.1%	92,384	46,740	31,905	
Rev. Boardings	YRT/VIVA SYSTEM TOTAL				1,681,947	1,601,681	-4.8%	14,463,520	14,414,845	-0.3%	64,875			

YORK REGION TRANSIT / VIVA - MONTHLY RIDERSHIP SUMMARY (Actual)

September 2015

Rev: October 12, 2015

Sep-15

21 weekdays, 4 Saturdays, 5 Sunday/Holidays

Sep-14

21 weekdays, 4 Saturdays, 5 Sunday/Holidays

YRT Route #	Route Name	2014			TOTAL BOARDINGS (MONTH)			TOTAL BOARDINGS (YEAR TO DATE)			2015			Notes
		Avg Wkdy Boardings	Avg Sat Boardings	Avg Sn/Hol Boardings	2014	2015	Percentage ('15 vs '14)	2014	2015	Percentage ('15 vs '14)	Avg Wkdy Boardings	Avg Sat Boardings	Avg Sn/Hol Boardings	
1 ^[1]	Highway 7	1,802	864	436	43,623	41,038	-5.9%	383,586	345,339	-10.0%	1,681	838	450	Rapidway opening (Bayview to Cedarland): Ridership migration to Viva purple/pink
2 ^[1]	Milliken	2,061	744	420	48,653	48,564	-0.2%	418,925	424,860	1.4%	2,021	927	442	Stable ridership
3 ^[1]	Thornhill	2,003	499	453	46,506	36,888	-20.7%	347,826	295,633	-15.0%	1,574	454	371	Weekday frequency reduction January 2015
8	Kennedy	1,642	710	483	39,908	42,199	5.7%	320,299	328,572	2.6%	1,722	791	546	Stable ridership: Increased ridership to Toronto 2015 Pan Am Games (July 10-26, 2015)
9 ^[1]	Ninth Line	324	-	-	6,864	6,397	-6.8%	53,972	52,115	-3.4%	303	-	-	Ridership migration to Route 15
14	14th Avenue	719	-	-	15,191	15,349	1.0%	110,046	115,021	4.5%	728	-	-	Stable ridership
15	Stouffville	34	13	8	815	893	9.6%	3,790	7,431	96.1%	37	13	12	New route implemented February 23, 2014
16	16th Ave	1,633	1,020	675	41,883	41,625	-0.6%	337,430	352,040	4.3%	1,608	1,100	663	Stable ridership
18	Bur Oak	1,041	124	-	22,393	21,427	-4.3%	150,070	163,516	9.0%	994	127	-	Stable ridership: Route restructured to operate along Angus Glen Blvd in April 2015
25	Major Mackenzie	727	-	-	15,328	15,183	-0.9%	117,217	121,299	3.5%	720	-	-	Stable ridership
40	Unionville Local	611	143	100	13,954	13,524	-3.1%	99,179	100,924	1.8%	588	147	109	Stable ridership
41	Markham Local	263	68	43	6,037	5,895	-2.4%	52,855	51,761	-2.1%	245	98	67	Stable ridership
42	Berczy	102	-	-	2,146	2,123	-1.1%	21,881	13,828	-36.8%	101	-	-	Stable ridership
45	Mingay	98	-	-	2,065	1,960	-5.1%	13,929	15,759	13.1%	93	-	-	Stable ridership
201	Markham GO Shuttle	87	-	-	1,829	1,702	-6.9%	15,520	16,918	9.0%	81	-	-	Stable ridership
202	Unionville GO Shuttle	127	-	-	2,670	2,543	-4.8%	24,684	25,171	2.0%	121	-	-	Stable ridership
203	Milliken GO Shuttle	53	-	-	1,119	1,138	1.7%	11,114	10,462	-5.9%	54	-	-	Stable ridership
204	Berczy GO Shuttle	-	-	-	736	630	-	-	6,530	-	30	-	-	Stable ridership: New route implemented August 30, 2014
300 ^[1]	Business Express	376	-	-	7,943	7,515	-5.4%	73,403	73,642	0.3%	356	-	-	Stable ridership
301 ^[1]	Markham Express	178	-	-	3,750	4,124	10.0%	34,186	33,956	-0.7%	196	-	-	General growth
302 ^[1]	Unionville Express	212	-	-	4,482	4,148	-7.5%	40,165	38,033	-5.3%	197	-	-	Stable ridership
303 ^[1]	Bur Oak Express	450	-	-	9,488	11,661	22.9%	83,040	90,573	9.1%	554	-	-	General growth
304 ^[1]	Mount Joy Express	290	-	-	6,110	7,397	21.1%	54,597	60,396	10.6%	351	-	-	General growth
522	Markham Community Bus	79	76	-	1,968	2,181	10.8%	17,002	18,403	8.2%	87	88	-	Stable ridership
	Markham Total	14,947	4,261	2,618	345,461	336,104	-2.7%	2,785,452	2,762,182	-0.8%	14,442	4,583	2,660	
TTC 17A ^[1]	Birchmount	157	-	-	3,297	3,570	8.3%	37,562	31,588	-15.9%	170	-	-	Stable ridership: Route restructured and service extended to Highway 7 April 2015
TTC 24D, 224B/C/D ^[1]	Vic Park North (Woodbine)	960	127	83	21,089	22,551	6.9%	202,538	207,640	2.5%	1,030	119	87	General growth
TTC 68B ^[1]	Warden North	978	460	265	23,703	20,044	-15.4%	196,140	191,852	-2.2%	837	363	203	Decreased employment travel
TTC 102D ^[1]	Markham Rd	947	431	321	23,216	20,970	-9.7%	221,877	210,774	-5.0%	874	379	220	Decreased employment travel
TTC 129A ^[1]	McCowan North	2,469	1,436	911	62,148	53,984	-13.1%	545,532	523,278	-4.1%	2,238	1,024	578	Decreased employment travel
	TTC (Markham) Total	5,511	2,454	1,580	133,453	121,119	-9.2%	1,203,649	1,165,132	-3.2%	5,149	1,885	1,088	
	Markham & TTC Total	20,458	6,715	4,198	478,914	457,223	-4.5%	3,989,101	3,927,314	-1.5%	19,591	6,468	3,748	
4/4A ^[1]	Major Mackenzie	3,596	2,167	1,489	92,075	96,433	4.7%	768,475	772,582	0.5%	3,812	1,894	1,669	Stable ridership: Route 4A extended to Pine Valley Drive September 2015
5 ^[1]	Clark	1,467	490	-	32,933	33,188	0.8%	286,204	296,959	3.8%	1,484	458	-	Stable ridership
7 ^[1]	Martin Grove	1,238	170	-	26,871	23,471	-12.7%	186,513	167,051	-10.4%	1,080	146	-	Frequency reduction during the AM and PM weekday rush hour and midday periods in November 2014
10 ^[1]	Woodbridge	389	8	18	8,346	7,782	-6.8%	67,732	61,300	-9.5%	363	6	7	Decreased ridership to Highway 7 corridor
12	Pine Valley	472	194	-	10,771	12,455	15.6%	95,118	100,103	5.2%	550	199	-	General increase
13	Islington	568	151	-	12,656	11,339	-10.4%	92,003	89,661	-2.5%	507	130	-	General decrease
20/20A ^[1]	Jane	3,716	1,953	1,466	94,086	102,264	8.7%	782,463	825,165	5.5%	3,828	2,580	2,131	Route 20A implemented September 2014
21	Vellore Local	252	-	-	5,319	5,050	-5.1%	32,588	43,031	32.0%	236	-	-	Stable ridership
22/22A ^[1]	King City	2,291	86	-	48,714	46,126	-5.3%	321,054	329,790	2.7%	2,171	79	-	Stable ridership
23 ^[1]	Thornhill Woods	767	-	-	16,173	13,904	-14.0%	130,737	122,938	-6.0%	657	-	-	General decrease
26	Maple Local	503	113	62	11,395	11,582	1.6%	97,276	98,768	1.5%	500	116	108	Stable ridership
28	Huntington	49	-	-	1,035	1,051	1.5%	7,641	9,246	21.0%	49	-	-	Stable ridership
61	King Local	13	-	-	274	232	-15.3%	2,486	1,993	-19.8%	11	-	-	Decreased travel to GO Station
7/7/7A ^[1]	Highway 7	5,235	2,403	1,141	125,860	119,995	-4.7%	992,537	1,035,197	4.3%	4,955	2,351	1,177	Stable ridership
99 (incl. 98E, 98/99) ^[1]	Yonge	2,317	1,724	1,333	62,449	52,311	-16.2%	538,139	456,322	-15.2%	1,914	1,403	1,270	Weekday frequency reduction January 2015
360 ^[1]	Vaughan Express	240	-	-	5,092	5,575	9.5%	46,035	48,831	6.1%	260	-	-	General increase
760 ^[1]	Vaughan Mills/Wonderland	-	409	375	3,539	6,678	88.7%	31,700	51,939	63.8%	241	638	614	Weekday service operated to Canada's Wonderland during the first week of September 2015; Service restructured to travel via Hwy 407 in May 2015.
	Vaughan Total	23,113	9,868	5,884	557,588	549,436	-1.5%	4,478,701	4,510,876	0.7%	22,618	10,000	6,976	
TTC 35D ^[1]	Jane	803	-	-	16,863	16,863	0.0%	174,016	162,124	-6.8%	803	-	-	Stable ridership
TTC 105/105-B ^[1]	Dufferin North	1,912	761	584	46,116	45,982	-0.3%	449,993	426,592	-5.2%	1,923	796	483	Stable ridership
TTC 107B/C/D ^[1]	Keele North	2,243	771	398	52,177	51,899	-0.5%	515,920	493,857	-4.3%	2,237	853	302	Stable ridership
TTC 160 ^[1]	Bathurst North	705	392	224	17,493	15,486	-11.5%	163,158	146,256	-10.4%	603	392	251	General decrease
TTC 165D/F ^[1]	Weston Road North	1,756	1,299	632	45,232	36,943	-18.3%	379,007	357,422	-5.7%	1,438	1,120	453	General decrease
	TTC (Vaughan) Total	7,419	3,223	1,838	177,881	167,173	-6.0%	1,682,094	1,586,251	-5.7%	7,004	3,161	1,489	
	Vaughan & TTC Total	30,532	13,091	7,722	735,469	716,609	-2.6%	6,160,795	6,097,127	-1.0%	29,622	13,161	8,465	

[1] Route crosses municipal boundaries.

	YRT Route #	Route Name	2014			TOTAL BOARDINGS (MONTH)			TOTAL BOARDINGS (YEAR TO DATE)			2015			
			Avg Wkdy Boardings	Avg Sat Boardings	Avg Sn/Hol Boardings	2014	2015	Percentage ('15 vs '14)	2014	2015	Percentage ('15 vs '14)	Avg Wkdy Boardings	Avg Sat Boardings	Avg Sn/Hol Boardings	
Richmond Hill	80	Elgin Mills	578	224	174	13,961	14,884	6.6%	119,794	119,480	-0.3%	632	216	143	General growth
	81	Inspiration	214	-	-	4,508	4,267	-5.3%	35,538	36,406	2.4%	203	-	-	Stable ridership
	82	Valleymede	412	-	-	8,671	8,302	-4.3%	58,598	61,548	5.0%	395	-	-	Stable ridership
	83/83A	Trench	1,143	-	-	24,059	24,909	3.5%	162,830	176,010	8.1%	1,184	-	-	General growth
	84	Oak Ridges	199	14	-	4,250	3,629	-14.6%	30,976	28,418	-8.3%	170	14	-	General decrease; Dial-a-Ride service converted to 60-minute on-request bookings effective February 2, 2015
	85/85C ^[1]	Rutherford	3,700	1,892	1,132	91,262	86,042	-5.7%	738,077	746,945	1.2%	3,443	1,833	1,193	Stable ridership
	86	Newkirk-Red Maple	1,043	239	-	22,915	23,399	2.1%	170,976	181,776	6.3%	1,058	281	-	General growth
	87 ^[1]	Autumn Hill	517	-	-	10,890	8,897	-18.3%	80,165	90,357	12.7%	422	-	-	General decrease
	88/88A ^[1]	Bathurst	5,451	2,656	1,701	134,243	127,826	-4.8%	970,073	1,002,875	3.4%	5,071	2,655	1,970	Stable ridership
	589/590	RH Community Bus	162	65	83	4,089	2,802	-31.5%	34,940	30,035	-14.0%	107	71	52	General decrease
	90/90B ^[1]	Leslie	3,603	956	652	83,110	81,327	-2.1%	645,912	668,117	3.4%	3,529	1,053	542	Stable ridership
	91/91A/91B/91E ^[1]	Bayview/Express	4,389	1,642	1,164	105,065	98,255	-6.5%	833,475	810,743	-2.7%	3,976	1,968	1,309	Stable ridership; Frequency reduction January 2015
	240	Mill Pond GO Shuttle	102	-	-	2,146	2,163	0.8%	20,031	19,206	-4.1%	103	-	-	Stable ridership
	241	Bev. Acres GO Shuttle	63	-	-	1,323	903	-31.7%	11,973	10,249	-14.4%	43	-	-	Decreased travel to GO Station
242	N. Richvale GO Shuttle	28	-	-	589	715	21.4%	5,745	6,046	5.2%	34	-	-	Increased travel to GO Station	
243	Redstone GO Shuttle	172	-	-	3,616	3,236	-10.5%	32,568	30,616	-6.0%	154	-	-	Decreased travel to GO Station	
244	Beaver Creek Shuttle	60	-	-	1,264	1,283	1.5%	9,683	10,075	4.0%	61	-	-	Increased travel to GO Station	
	Richmond Hill Total	21,836	7,688	4,906	515,961	492,839	-4.5%	3,961,354	4,028,902	1.7%	20,585	8,091	5,209		
Aurora	31 ^[1]	Aurora North	99	-	-	2,088	2,208	5.7%	15,902	16,335	2.7%	105	-	-	General growth
	32	Aurora South	543	25	-	11,543	13,233	14.6%	80,013	83,008	3.7%	626	14	-	General growth; Dial-a-Ride service converted to 60-minute on-request bookings effective February 2, 2015
	33/33A	Wellington	553	106	-	12,067	12,282	1.8%	90,095	93,477	3.8%	552	156	-	Stable ridership
	Aurora Total	1,195	131	-	25,698	27,723	7.9%	186,010	192,820	3.7%	1,283	170	-		
Newmarket, East Gwill., Georgina	44	Bristol	286	65	-	6,300	6,456	2.5%	49,722	51,574	3.7%	292	73	-	General growth
	50	Queensway	1,148	690	437	29,435	29,544	0.4%	247,334	239,831	-3.0%	1,117	763	519	Stable ridership; vivaNext construction occurring along Davis Drive; Route 50B discontinued in April 2015
	51	Keswick Local	219	38	-	4,782	4,164	-12.9%	34,103	31,761	-6.9%	191	31	-	General decrease; Route restructured January 2015
	52 ^[1]	Holland Landing	255	127	-	5,903	5,366	-9.1%	46,400	45,007	-3.0%	232	114	-	General Decrease; Construction on 2nd Concession between Green Lane and Mount Albert Road and related detour
	54 ^[1]	Bayview	471	114	-	10,405	8,257	-20.6%	80,077	69,650	-13.0%	370	112	-	Schedule adjustments and reduced midday frequency implemented November 2014
	55/55B	Davis Drive	1,010	544	302	25,030	21,896	-12.5%	220,947	204,847	-7.3%	876	429	327	vivaNext construction occurring along Davis Drive; route travels through construction zone
	56	Gorham-Eagle	473	254	125	11,627	11,506	-1.0%	100,350	96,796	-3.5%	433	395	152	Stable ridership
	57/57A	Mulock	1,053	339	189	24,539	31,952	30.2%	189,156	201,201	6.4%	1,439	126	223	General growth; potential ridership diversion from vivaNext construction occurring along Davis Drive
	58 ^[1]	Mount Albert	126	14	-	2,710	2,734	0.9%	23,822	23,276	-2.3%	128	7	-	Stable ridership
	98 ^[1]	Yonge	728	466	326	18,863	20,149	6.8%	154,159	164,946	7.0%	757	443	479	General corridor growth
	222 ^[1]	Aurora-Nwmkt GO Shuttle	61	-	-	1,286	1,226	-4.7%	9,225	10,232	10.9%	58	-	-	Decreased travel to GO Station
223	Newmarket GO Shuttle	17	-	-	359	400	11.4%	3,378	3,082	-8.8%	19	-	-	Increased travel to GO Station	
520/521	Newmarket Community Bus	79	32	12	1,853	1,830	-1.2%	17,352	16,421	-5.4%	74	23	33	Stable ridership	
	Newmarket Total	5,926	2,683	1,391	143,091	145,480	1.7%	1,176,025	1,158,624	-1.5%	5,987	2,516	1,733		
	YRT SUB-TOTAL	79,947	30,308	18,217	1,899,133	1,839,874	-3.1%	15,473,285	15,404,787	-0.4%	77,068	30,406	19,155		
Viva ^[2]	blue/blue 'A' ^[1]	Yonge Corridor	20,229	13,037	9,891	529,180	482,809	-8.8%	4,374,349	4,166,824	-4.7%	18,341	12,237	8,908	General corridor decrease
	purple ^[1]	Highway 7 Corridor	9,306	4,871	3,531	234,179	228,510	-2.4%	1,775,658	1,774,593	-0.1%	8,984	4,848	3,695	Stable ridership
	pink ^[1]	Finch - Unionville	2,396	-	-	50,425	52,492	4.1%	434,453	443,152	2.0%	2,467	-	-	Stable ridership
	orange (incl. Züm) ^[1]	Vaughan North-South Link	2,565	588	426	58,383	52,292	-10.4%	452,073	403,552	-10.7%	2,312	444	347	General corridor decrease
	green ^[1]	Markham North-South Link	677	-	-	14,392	13,471	-6.4%	124,180	113,272	-8.8%	633	-	-	General corridor decrease
	Viva SUB-TOTAL	35,173	18,496	13,848	886,559	829,574	-6.4%	7,160,713	6,901,393	-3.6%	32,737	17,529	12,950		

[1] Route crosses municipal boundaries.

[2] Viva ridership data adjustment is derived on a monthly basis, and compensates for temporary malfunctions of on-board automatic passenger counter (APC) equipment, and/or for drivers not logging onto Init APC system.

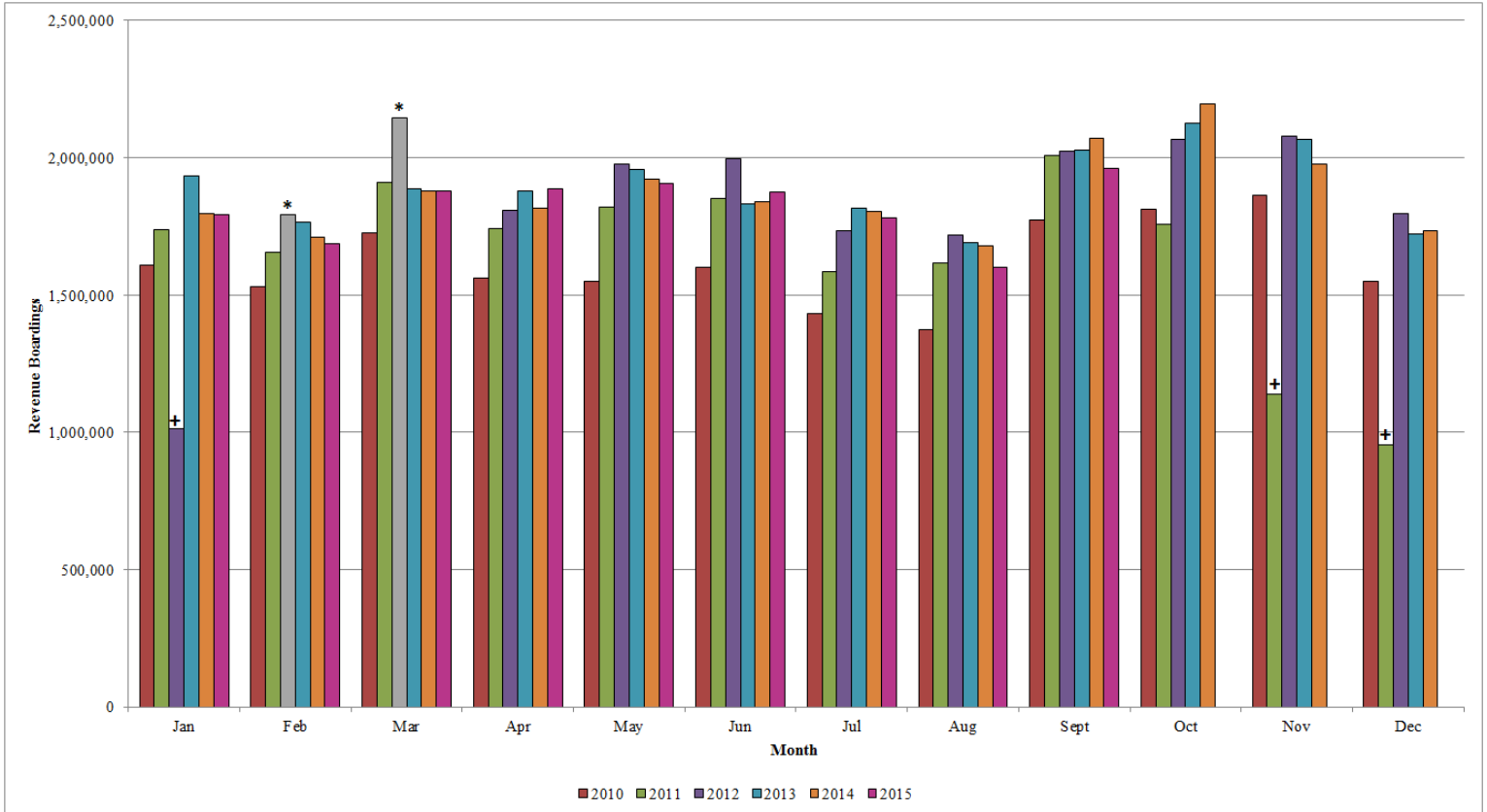
Tot. Boardings	YRT/VIVA SYSTEM TOTAL	115,120	48,804	32,065	2,785,692	2,669,448	-4.2%	22,633,998	22,306,180	-1.4%	109,805	47,935	32,105
----------------	-----------------------	---------	--------	--------	-----------	-----------	-------	------------	------------	-------	---------	--------	--------

Rev. Boardings	YRT/VIVA SYSTEM TOTAL				2,069,584	1,960,243	-5.3%	16,533,104	16,375,088	-1.0%	80,633		
----------------	-----------------------	--	--	--	-----------	-----------	-------	------------	------------	-------	--------	--	--

YRT/Viva

2015 Revenue Ridership Summary (Actual)

Conventional and BRT services including contracted TTC services north of Steeles Avenue



* February & March 2012 estimated revenue ridership due to free transit service.

+ Monthly ridership numbers from November 2011 to January 2012 are based on Veolia Transportation, TTC, and Dial-a-Ride services, due to operator strike from October 24, 2011 to February 3, 2012.

Month	2014 Ridership	2015 Ridership	Monthly Change ['15 vs '14]	Year to Date (YTD) Change	Average Weekday Revenue Ridership 2015
January	1,799,396	1,792,864	-0.4%	-0.4%	73,700
February	1,712,672	1,689,800	-1.3%	-0.8%	77,211
March	1,880,873	1,881,136	0.0%	-0.5%	73,657
April	1,815,289	1,885,935	3.9%	0.6%	77,670
May	1,924,280	1,905,222	-1.0%	0.2%	79,006
June	1,842,496	1,876,360	1.8%	0.5%	75,173
July	1,806,567	1,781,847	-1.4%	0.2%	69,310
August	1,681,947	1,601,681	-4.8%	-0.3%	64,875
September	2,069,584	1,960,243	-5.3%	-1.0%	80,509
October	2,198,013				
November	1,977,952				
December	1,736,428				
YTD Total	22,445,497	16,375,088			



YORK
REGION
TRANSIT

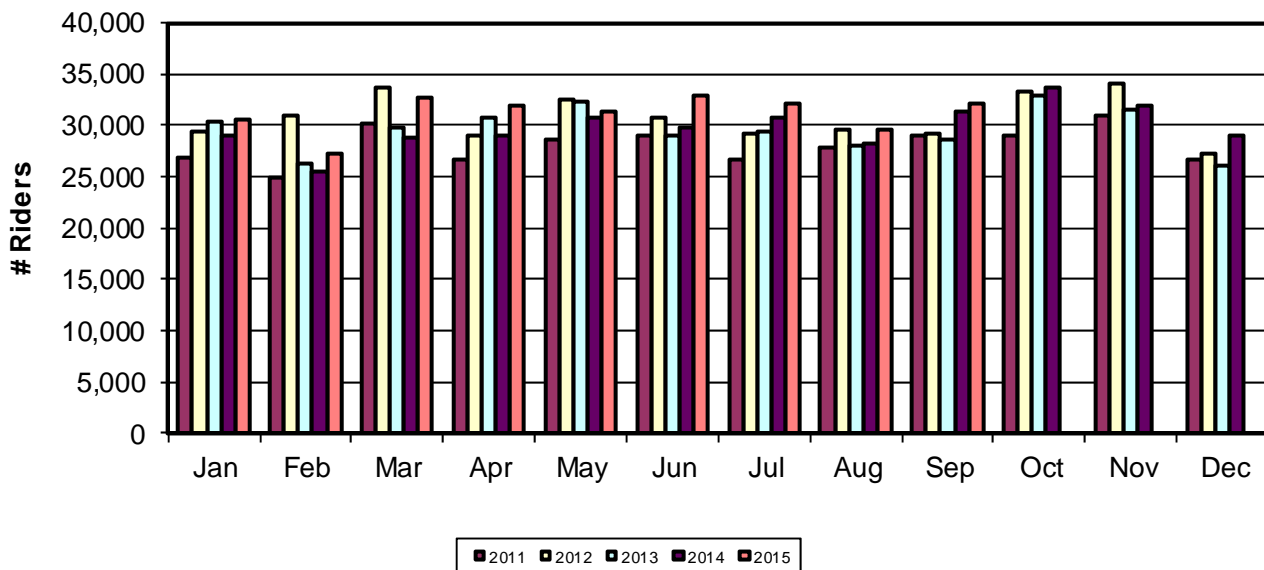


YRT/Viva

2015 Ridership Summary (Actual)

Specialized Services – Mobility Plus

Five-Year Ridership by Month

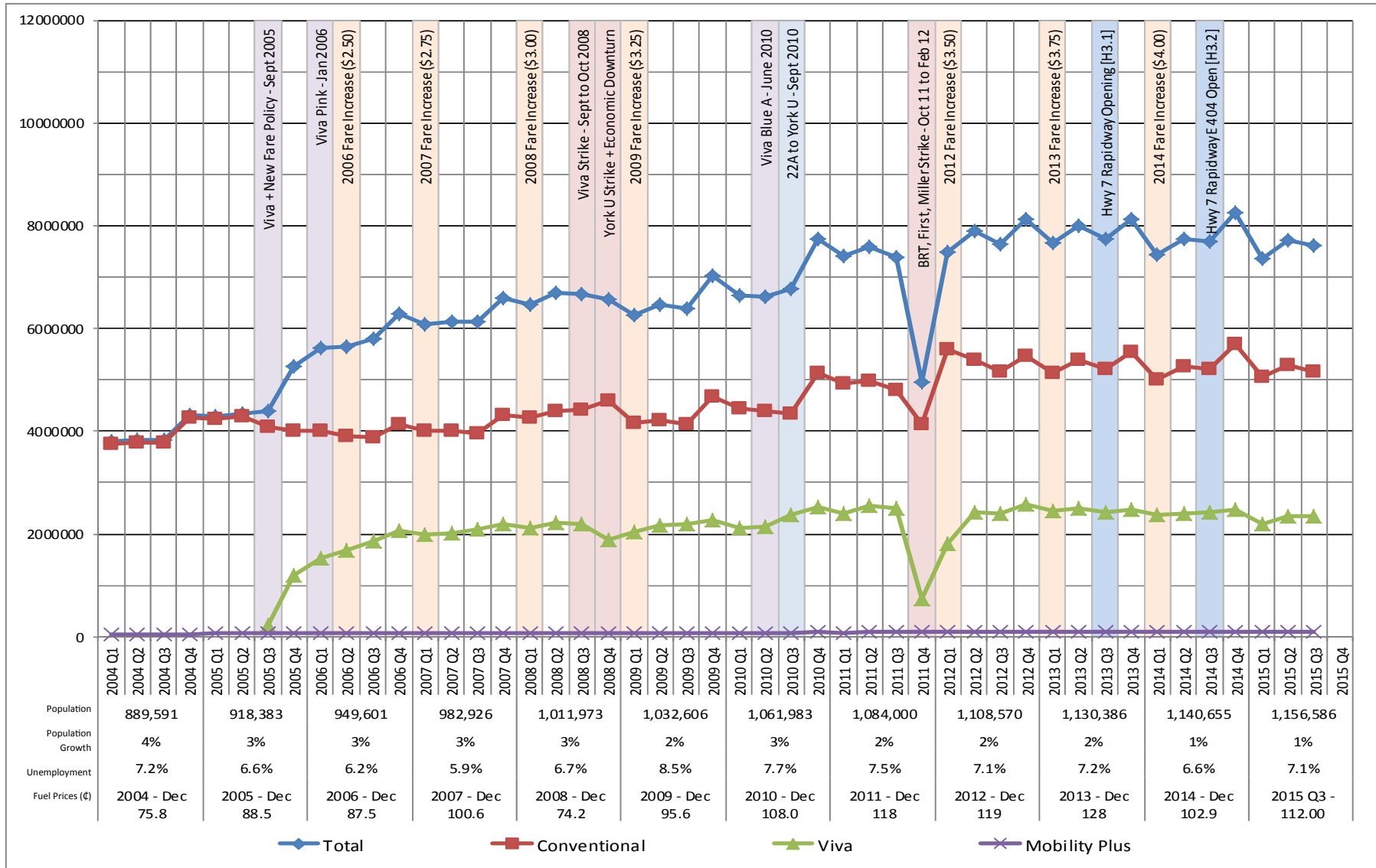


Month	2014 Ridership	2015 Ridership	Monthly Change ('15 vs. '14)	Year to Date (YTD) Change	Average Weekday Revenue Ridership 2015
January	28,972	30,516	5.3%	5.3%	1,278
February	25,419	27,332	7.5%	6.4%	1,300
March	28,863	32,803	13.7%	8.9%	1,345
April	28,915	31,862	10.2%	9.2%	1,392
May	30,811	31,263	1.5%	7.6%	1,399
June	29,859	32,954	10.4%	8.0%	1,354
July	30,749	32,034	4.2%	7.5%	1,295
August	28,316	29,563	4.4%	7.1%	1,264
September	31,318	32,187	2.8%	6.6%	1,345
October	33,679				
November	31,972				
December	29,036				

YTD 357,909 280,514

Total Boardings by Quarter

2004 to Present

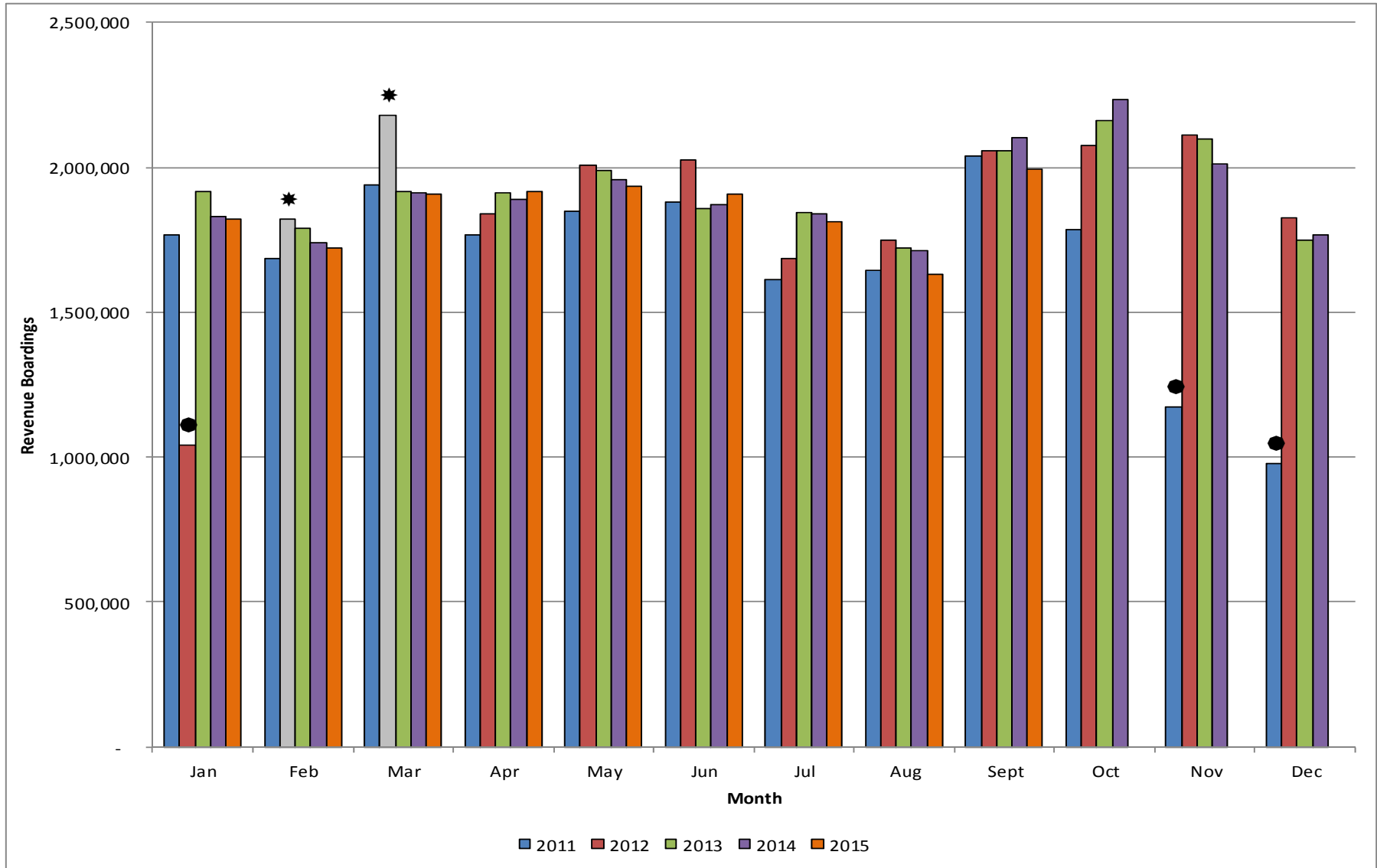


Notes:

- Population figures are for year-end. Source: York Region Long Range Planning, based on Statistics Canada and CMHC Housing Completion Data
- Fuel price source: Ministry of Energy and Infrastructure (<http://www.energy.gov.on.ca/en/fuel-prices/>)
- Unemployment rate source: Statistics Canada (<http://www.statcan.gc.ca/start-debut-eng.html>)

Revenue Boardings by Month

Rolling Five Year Count - 2011 to 2015

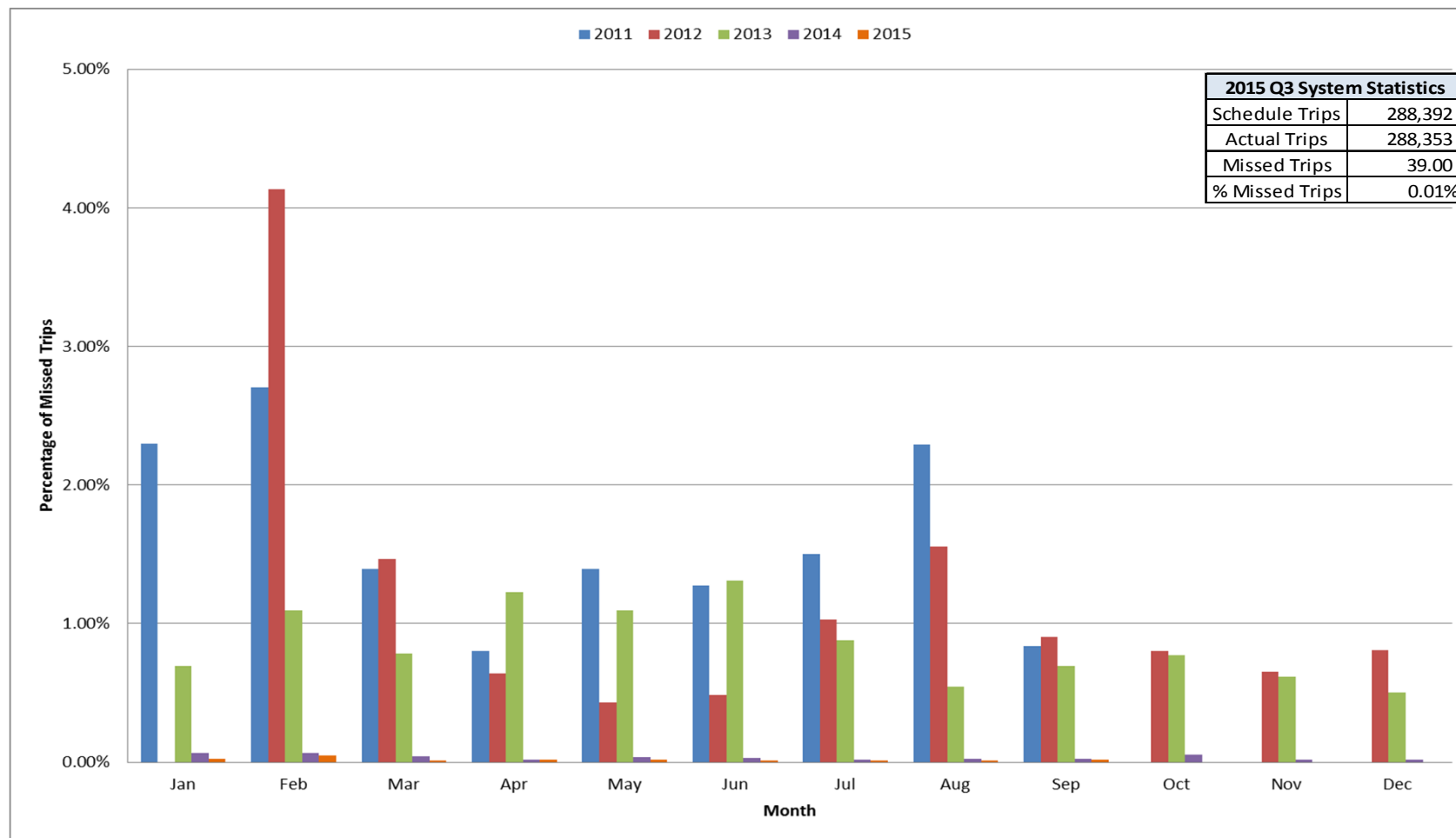


Notes:

- Due to operator strike from Oct 24, 2011 to Feb 3, 2012, monthly ridership numbers from Nov 2011 to Jan 2012 are based on Veolia Transportation (SW Division), TTC, and Dial-a-Ride services
- * Forecasted revenue ridership due to free transit service, offered February and March 2012

System-Wide Percentage Missed Trips by Month

2011 to 2015

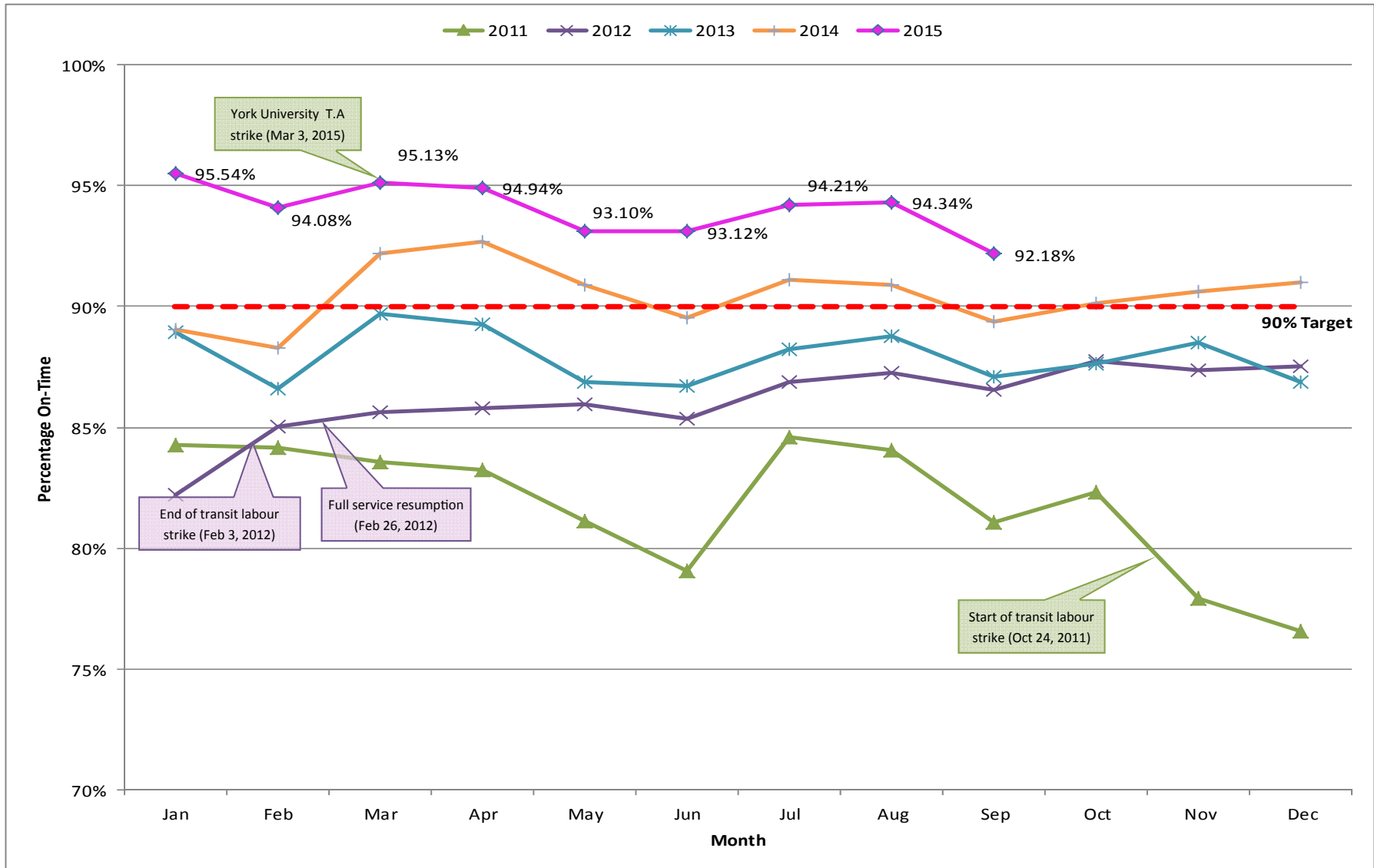


Notes:

- Missed trips from October 2011 to January 2012 are excluded due to the bus operator strike
- 2014, 2015 miss trip logic updated to missed service to reflect more accurate statistics

On-Time Performance Conventional - Trip Start

Conventional Transit Routes - 2011 to 2015

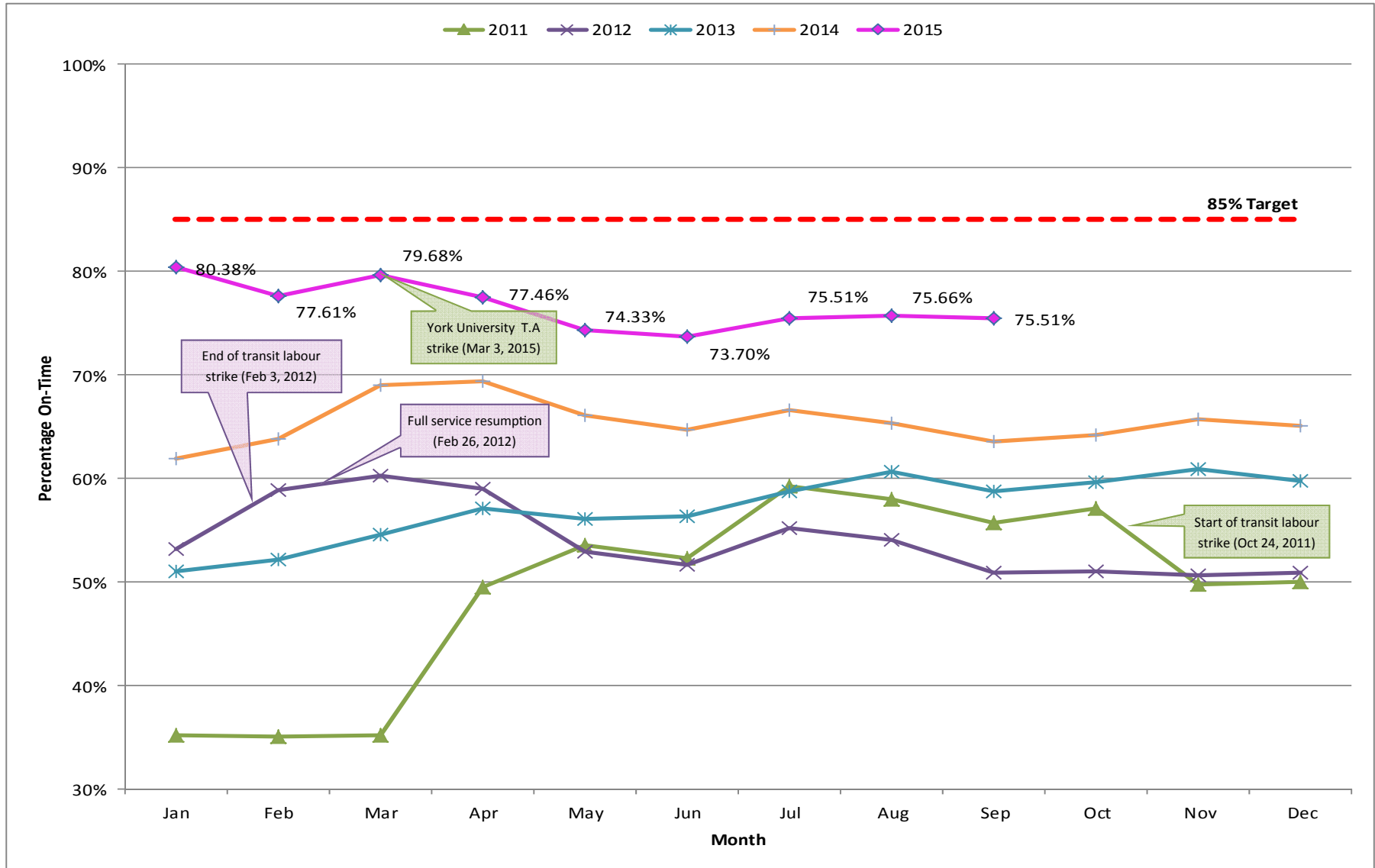


Notes:

- On-Time Performance (OTP) from October 24, 2011 to February 3, 2012 only includes Veolia Transportation Services (SW Division) due to operator strike
- New OTP measuring criteria to include data from the first and last five stops
- OTP measurement criteria: trip arrival later than five minutes or trip departure earlier than one minute

On-Time Performance Conventional - Trip Arrival

Conventional Transit Routes - 2011 to 2015

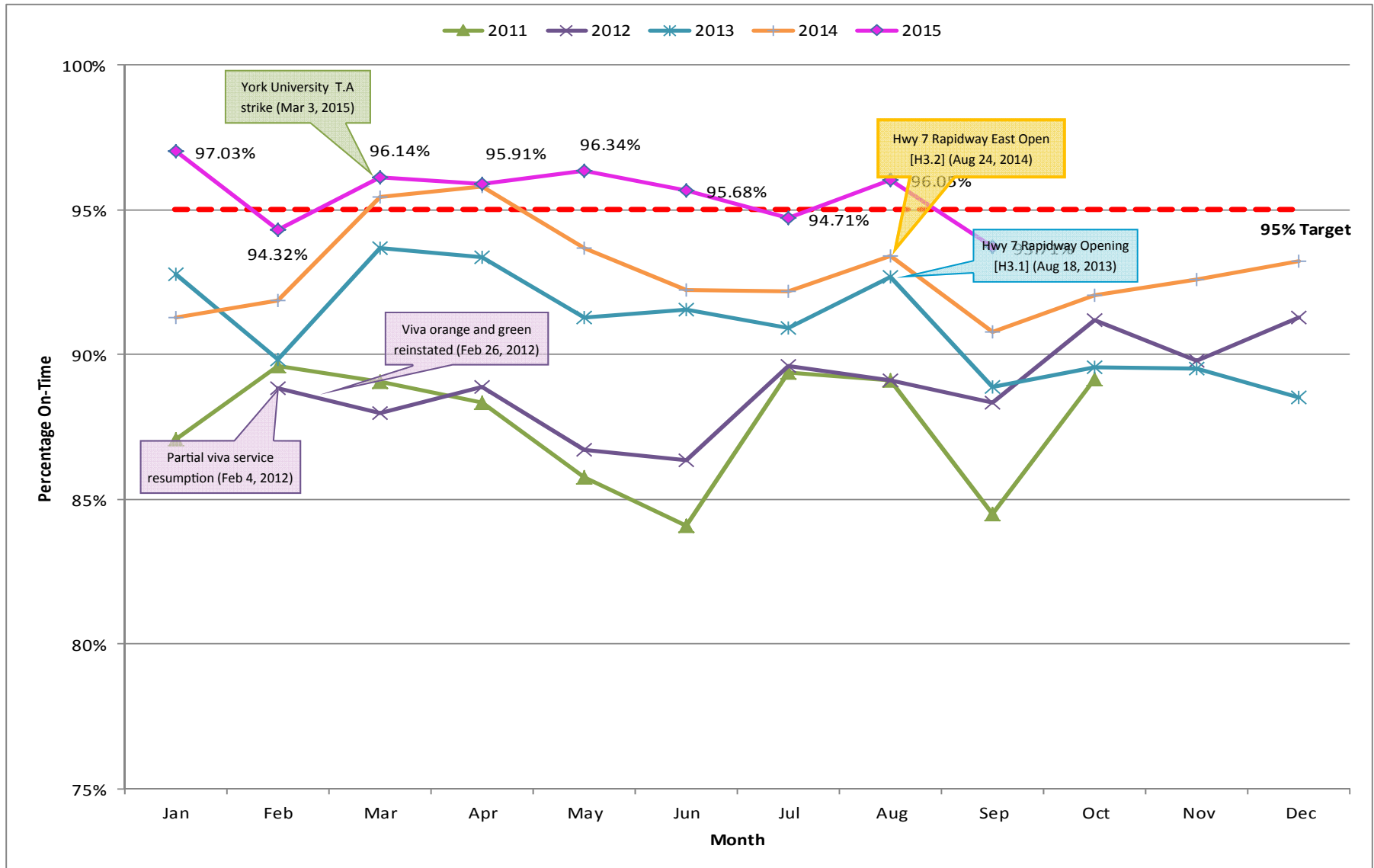


Notes:

- On-Time Performance (OTP) from October 24, 2011 to February 3, 2012 only includes Veolia Transportation Services (SW Division) due to operator strike
- New OTP measuring criteria to include data from the first and last five stops
- OTP measurement criteria: trip arrival later than five minutes or trip departure earlier than one minute

On-Time Performance York BRT (Viva) - Trip Start

Rapid Transit Routes - 2011 to 2015

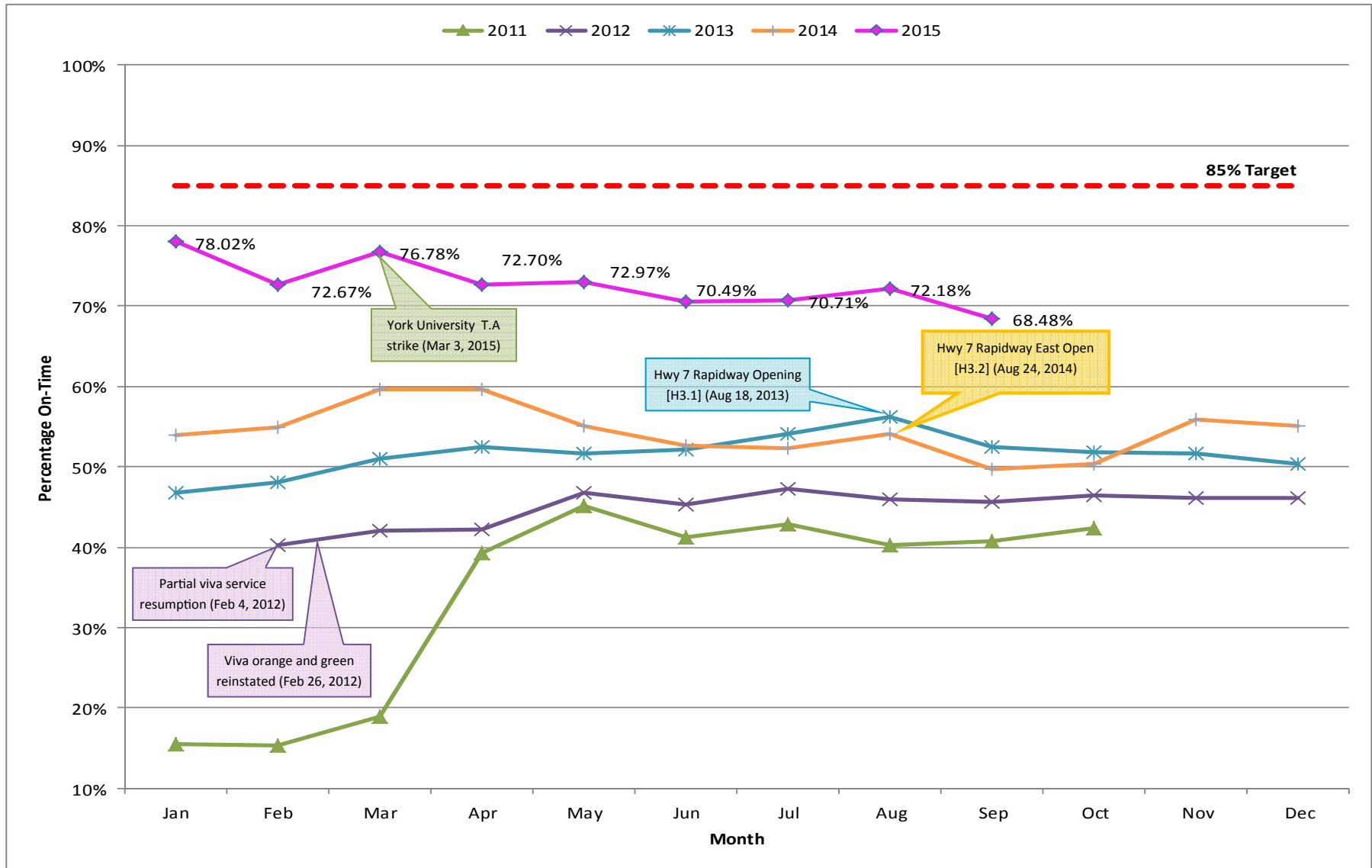


Notes:

- On-Time Performance from October 24, 2011 to February 3, 2012 not available for York BRT Services LP due to operator strike
- All York BRT Services LP resumed on February 26, 2012
- New OTP measuring criteria to include data from the first and last five stops
- OTP measurement criteria: trip arrival later than five minutes or trip departure earlier than one minute

On-Time Performance York BRT (Viva) - Trip Arrival

Rapid Transit Routes - 2011 to 2015



Notes:

- On-Time Performance from October 24, 2011 to February 3, 2012 not available for York BRT Services LP due to operator strike
- All York BRT Services LP resumed on February 26, 2012
- New OTP measuring criteria to include data from the first and last five stops
- OTP measurement criteria: trip arrival later than five minutes or trip departure earlier than one minute