



# **Administrative Centre Annex**

---

Presentation to

## **York Region Accessibility Advisory Committee**

**Kellie Shantz, Property Services**

**Bob Topping, DesignAble Environments**

September 23, 2015



# Presentation Overview

- Annex Project Overview
- Review of Feedback from August 26, 2014 Presentation to Accessibility Advisory Committee
- Interior Design Accessibility Review

# Aerial View of the Annex



This is where we are today

# First Floor Interior Perspective

## First Floor:

- Access York
- Corporate Learning
- Conference Centre
- Cafeteria
- Bridge Connection





# Second Floor Interior Perspective

## Second Floor:

- Courts Services

## Third Floor:

- Public Health Clinics
- Ontario Works
- Social Services
- Housing Services

# Your advice made a difference!

- Front doors changed to automatic sliding doors
- Service counter design that takes into consideration varying abilities, not only wheelchair accessibility

# Thank you for your feedback!

- ✓ Accessible underground parking
- ✓ Crosswalks from parking to entrance
- ✓ Turning radius for buses
- ✓ Accessible washroom accessories
- ✓ Accessible signage

# Atrium



Daylight, visual connections, orientation and wayfinding



# Floor Finishes and Materials



Firm, stable, slip-resistant, low/no glare finishes  
carpet tile, porcelain tile and resilient flooring

# Materials – Colour Contrasting



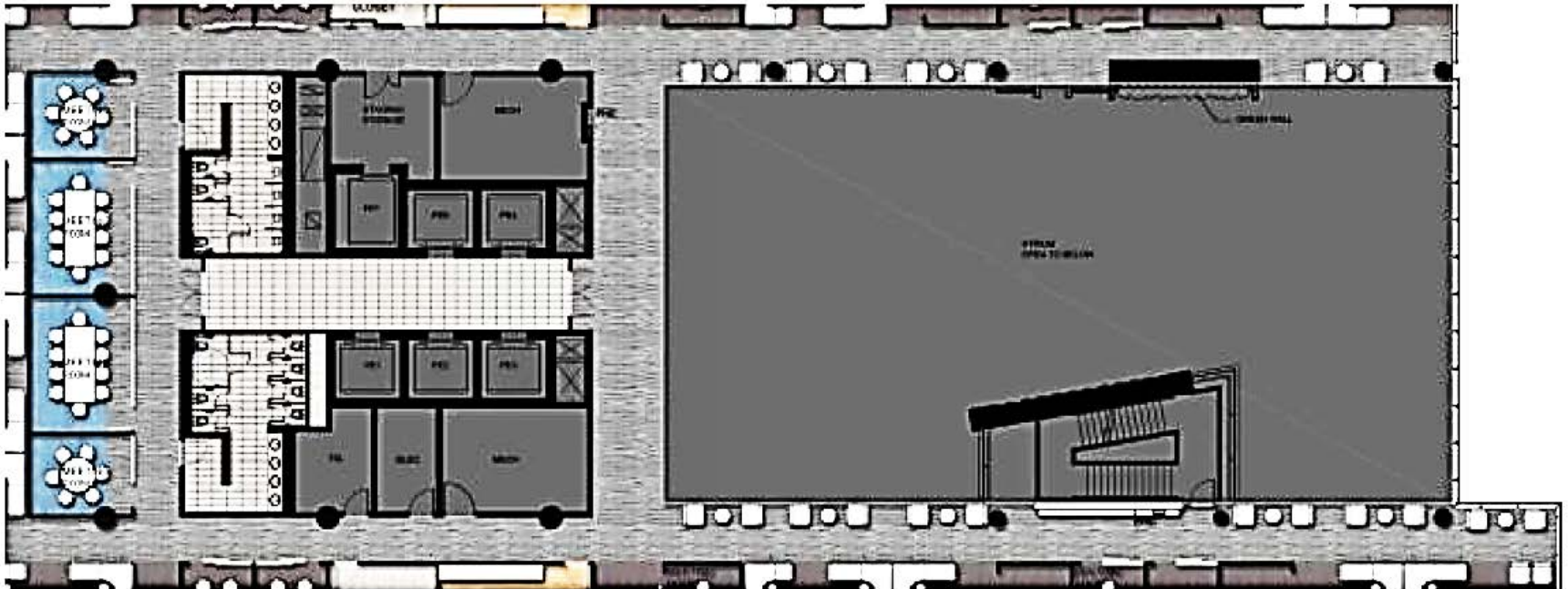
Wood doors and frames with contrasting white walls  
Solid doors and frames finished with a dark paint finish

# Elements – Colour Contrasting



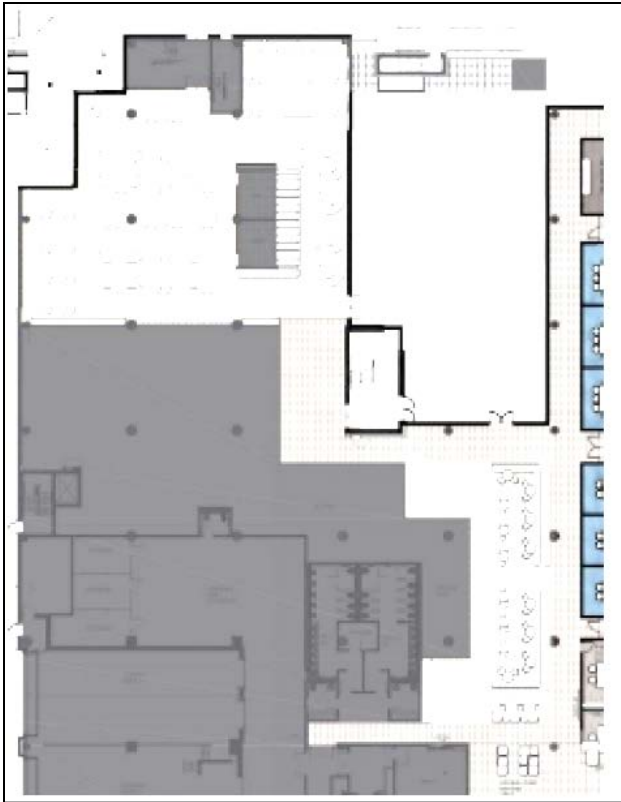
Colour contrast and no/low glare finishes

# Material Selections



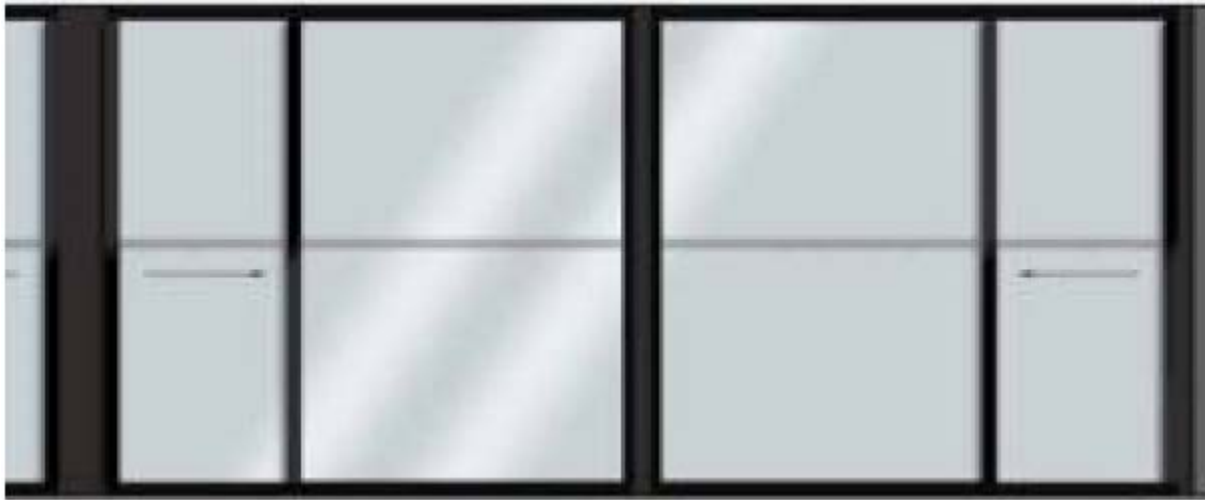
Light coloured porcelain tiles in lobby areas and washrooms  
contrasting carpet tiles located around elevator core,  
atrium floors, and all corridors on floors three to six

# Material Selections



Ground floor: contrasting tile finish on main paths of travel, light-coloured tile used to identify café and cafeteria area

# Glazing – Vision Banding



2" Vision strip located at 1350mm above the finished floor provided on all glass panels and doors

# Accessible Parking



25 accessible parking spaces, access aisles, crosswalks and ramp access to entrances

# Door Hardware



Lever hardware on all swing doors

Pull hardware on all sliding office-doors

Automatic door operators at accessible entrances, washrooms,  
doors without push/pull latch clearance and courtrooms

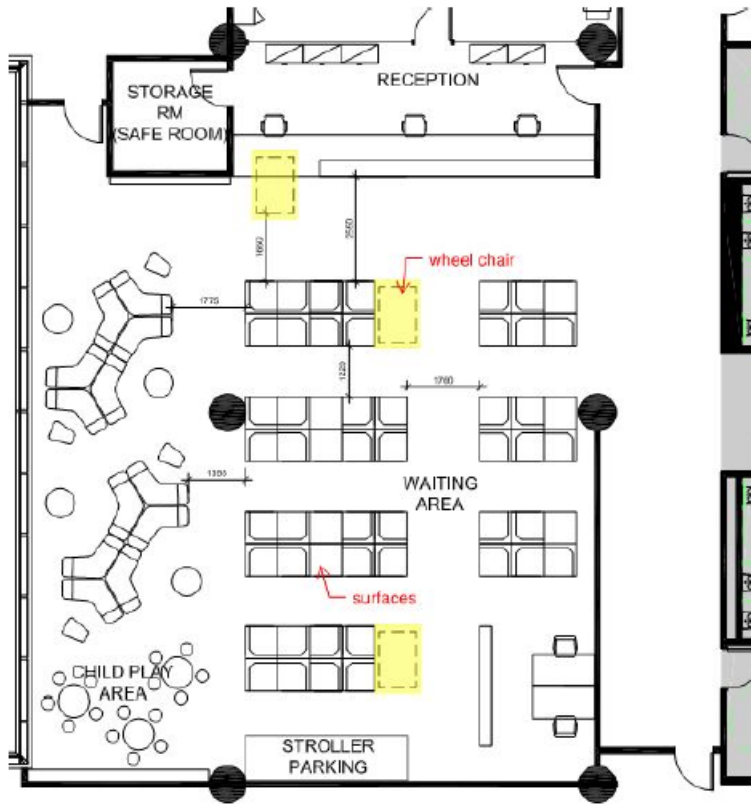


# Reception/Waiting Areas



Lower counters with suitable knee clearance  
on ground and third floor reception desks

# Reception/Waiting Areas



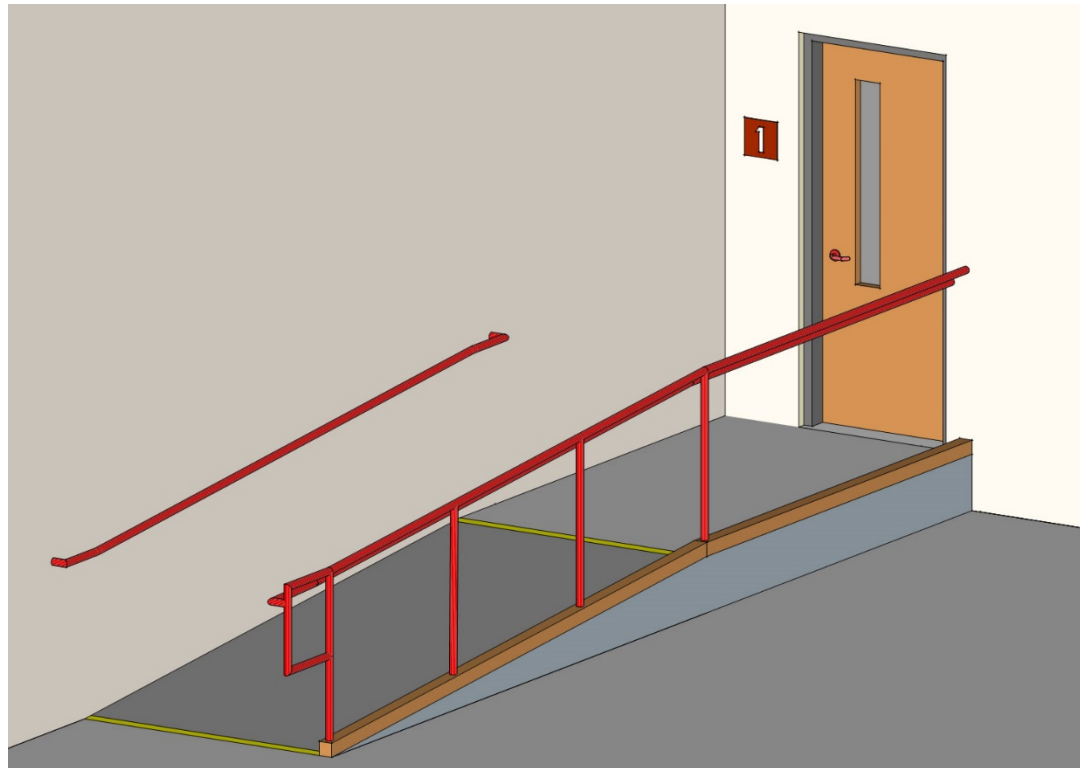
Clear floor space of 915mm and 1370mm adjacent to seating  
Accessible seating options with back and arm supports

# Accessible Stairs



Detectable warning surfaces, colour contrast, handrails, slip resistant nosing material, low gloss surfaces

# Ramps



Slope, handrails, landings, and colour contrast strips

# Courtrooms



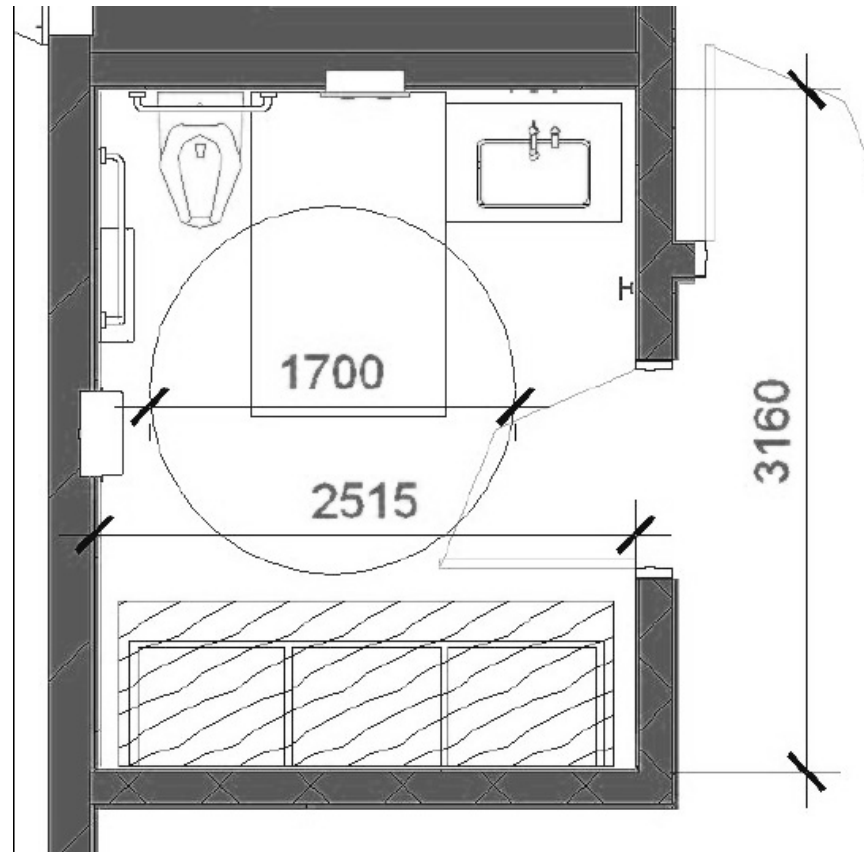
Accessible Judge's dais, witness box, public seating

# Court Services, Holding Cells



Colour contrast, turning space, transfer space and threshold

# Accessible/Universal Washrooms



Two located on the ground floor  
and two located on the third floor

# Signage



Colour contrast, tactile, braille and futura font



# Emergency Systems



Sprinkler system, audio and visual alarms  
and grade level exits

# Thank you!



# Questions?

