



MEMORANDUM

TO: Committee of the Whole
FROM: Daniel Kostopoulos, P.Eng.
Commissioner of Transportation Services
DATE: September 10, 2015
RE: York Region Transit (YRT/Viva) Ridership Statistics – 2015 Second Quarter

This memorandum provides an overview of YRT/Viva ridership statistics for the second Quarter (Q2) of 2015, representing the months from April to June 2015.

YRT/Viva 2015 Q2 revenue ridership was 5.67 million, representing an increase of approximately 85,500 revenue riders, or an increase of 1.5 per cent compared to Q2 2014.

There were 63 weekdays, 13 Saturdays and 15 Sundays/Holidays in both Q2 2015 and Q2 2014.

During Q2 of 2015, the average price of gasoline decreased from \$1.38 per litre to \$1.13 per litre compared to Q2 of 2014, representing a \$0.25 per litre decrease, or a decrease of 18.1 per cent.

York University teaching assistants and graduate assistants were on strike from March 3, 2015 to March 31, 2015. Classes at York University were cancelled at the onset of the strike, with select courses resuming on March 11, 17, and 23, 2015, with the remaining classes resuming April 1, 2015. Exams were approximately two weeks later in April in 2015 compared to 2014.

Weather

Total precipitation in Q2 of 2014^[1] was 251.2 millimetres, compared to 315.8 millimetres in Q2 of 2015^[1]. The average temperature was 13.0 degrees Celsius in Q2 of 2014^[1] and 13.6 degrees Celsius in Q2 of 2015^[1].

Employment

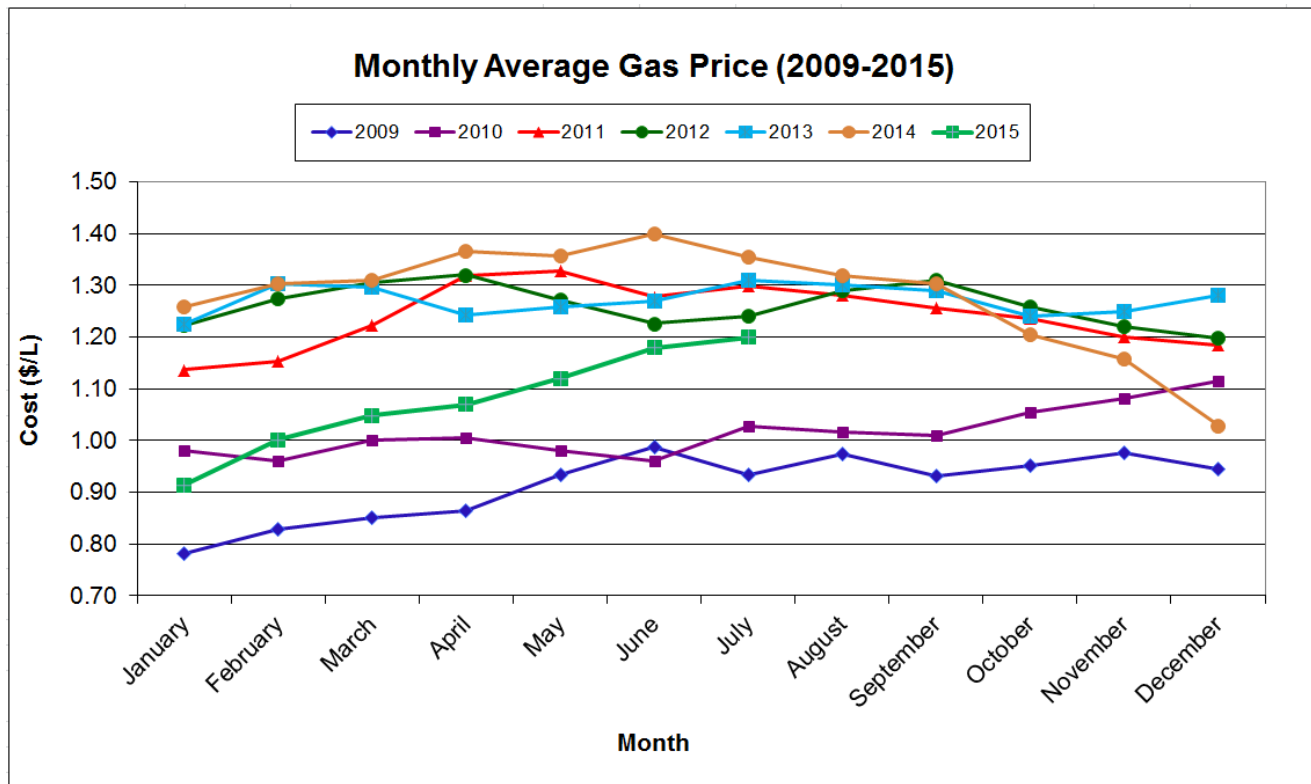
The national unemployment rate in Q2 2015 saw a decrease compared to Q2 2014. The national unemployment rate in April 2015^[2] was 6.8 per cent, down 0.1 per cent from 6.9 per cent in April 2014. In May 2015^[2], the national unemployment rate was 6.8 per cent, down 0.2 per cent from 7.0 per cent in May 2014. While in June 2015^[2], the national unemployment rate was 6.8 per cent, down 0.3 per cent from 7.1 per cent in June 2014.

York Region is located within the Employment Insurance Economic Region of Toronto (Economic Region of Toronto), which recorded an unemployment rate of 7.2 per cent in April 2015^[3], a decrease of 0.8 per cent compared to 8.0 per cent in April 2014. In May 2015^[3], the Economic Region of Toronto recorded an unemployment rate of 7.1 per cent, a decrease of 0.7 per cent compared to 7.8 per cent in May 2014. Finally, in June 2015^[3], the Economic Region of Toronto recorded an unemployment rate of 7.0 per cent, a decrease of 0.6 per cent compared to 7.6 per cent in June 2014.

Gas Prices

Average gasoline prices decreased from \$1.38 per litre in Q2 2014^[4] to \$1.13 per litre in Q2 2015^[5], a decrease of \$0.25 per litre. This information is reflected in Figure 1 which depicts historical gasoline prices since 2009.

Figure 1: Gas Prices between January 2009 and June 2015



Mobility Plus

Mobility Plus ridership increased 7.3 per cent from 89,585 riders in Q2 2014 to 96,109 in Q2 2015, resulting in 6,524 additional rides. This was due to additional ridership being accommodated in the midday and evening hours, additional day program trips, and were fewer adverse weather days in Q2 2015.

Conclusion

YRT/Viva will continue assessing ridership trends while making schedule adjustments to address customer needs and concerns.

Staff will monitor routes travelling through the completed rapidway and construction zones to identify increases and decreases in ridership.

GO Transit and adjacent transit agencies will continue to be contacted by YRT/Viva staff to identify ridership trends within the GTA. Customer feedback regarding transit services will be monitored through on-street operations, social media and the Contact Centre.

In Q2 2015, YRT/Viva conducted the first wave of a customer survey that identifies satisfaction levels, demographics and transit items that are important to the customer. This information will be used to plan service and transit initiatives to help increase ridership. The second wave of the customer survey will take place in Q4 2015.

Daniel Kostopoulos, P.Eng.
Commissioner of Transportation Services

Attachments (1)

Notes:

^[1] Historical Climate Data, Toronto Buttonville Airport, Ontario. Retrieved from <http://climate.weather.gc.ca/>. Retrieved date: July 9, 2015.

^[2] Labour Force Survey. April 2015, May 2015, June 2015, Statistics Canada. Retrieved from <http://www.statcan.gc.ca/subjects-sujets/labour-travail/lfs-epa/lfs-epa-eng.htm>. Retrieved date: July 13, 2015

^[3] EI Economic Region of Toronto – Unemployment Rates for the EI Economic Regions. *Human Resources and Skills Development Canada*. Retrieved from <http://srv129.services.gc.ca/rbin/eng/rates.aspx?id=2014#data>. Retrieved date: July 9, 2015

^[4] Fuel Price Data. (2014). *Ministry of Energy*. Retrieved from <http://www.energy.gov.on.ca/en/fuel-prices/?fuel=REG&yr=2014>. Retrieved date: July 9, 2015

^[5] Fuel Price Data. (2015). *Ministry of Energy*. Retrieved from <http://www.energy.gov.on.ca/en/fuel-prices/?fuel=REG&yr=2015>. Retrieved date: July 9, 2015

YORK REGION TRANSIT / VIVA - MONTHLY RIDERSHIP SUMMARY (Actual)

April 2015

Rev: May 13, 2015

Apr-15	21 weekdays, 4 Saturdays, 5 Sunday/Holidays
Apr-14	21 weekdays, 4 Saturdays, 5 Sunday/Holidays

	YRT Route #	Route Name	2014			TOTAL BOARDINGS (MONTH)			TOTAL BOARDINGS (YEAR TO DATE)			2015			Notes	
			Avg Wkdy Boardings	Avg Sat Boardings	Avg Sn/Hol Boardings	2014	2015	Percentage ('15 vs '14)	2014	2015	Percentage ('15 vs '14)	Avg Wkdy Boardings	Avg Sat Boardings	Avg Sn/Hol Boardings		
Markham, Stouffville	1 ^[1]	Highway 7	1,809	732	373	42,937	39,791	-7.3%	155,285	145,822	-6.1%	1,623	884	411	Rapidway opening (Bayview to Cedarland); Ridership migration to Viva purple/pink	
	2 ^[1]	Milliken	1,976	850	365	46,952	47,777	1.8%	181,675	185,540	2.1%	1,992	866	462	Stable ridership	
	3 ^[1]	Thornhill	1,742	547	414	41,017	36,589	-10.8%	157,013	140,526	-10.5%	1,539	554	370	Weekday frequency reduction January 2015; Decreased travel to York University	
	8	Kennedy	1,515	622	457	36,744	38,240	4.1%	131,256	133,789	1.9%	1,563	697	503	Stable ridership	
	9 ^[1]	Ninth Line	312	-	-	6,600	6,272	-5.0%	24,197	23,574	-2.6%	298	-	-	Stable ridership	
	14	14th Avenue	680	-	-	14,334	14,962	4.4%	50,780	55,479	9.3%	711	-	-	Stable ridership	
	15	Stouffville	16	8	5	399	862	116.0%	633	2,918	361.0%	37	9	9	New route implemented February 23, 2014	
	16	16th Ave	1,434	911	544	36,636	40,715	11.1%	133,102	144,700	8.7%	1,582	1,020	660	General corridor growth	
	18	Bur Oak	930	138	-	20,136	22,189	10.2%	70,977	81,179	14.4%	1,031	124	-	Increased demand to/from Bur Oak Secondary School	
	25	Major Mackenzie	620	-	-	13,059	13,974	7.0%	48,091	50,655	5.3%	663	-	-	General corridor growth	
	40	Unionville Local	569	138	75	12,926	13,652	5.6%	47,640	48,357	1.5%	599	137	98	Stable ridership	
	41	Markham Local	253	72	52	5,899	6,307	6.9%	23,334	23,350	0.1%	269	76	67	General growth	
	42	Berczy	138	-	-	2,900	1,955	-32.6%	11,315	7,129	-37.0%	93	-	-	Ridership migration to Route 204	
	45	Mingay	82	-	-	1,735	2,083	20.1%	6,452	7,844	21.6%	99	-	-	General growth	
	201	Markham GO Shuttle	85	-	-	1,787	1,997	11.8%	7,344	8,118	10.5%	95	-	-	General growth	
	202	Unionville GO Shuttle	137	-	-	2,882	2,985	3.6%	11,746	11,634	-1.0%	142	-	-	Stable ridership	
	203	Milliken GO Shuttle	62	-	-	1,310	1,244	-5.0%	5,176	4,646	-10.2%	59	-	-	Stable ridership	
	204	Berczy GO Shuttle	-	-	-	-	715	-	-	3,168	-	34	-	-	New route implemented August 30, 2014; Ridership migration from Route 42	
	300 ^[1]	Business Express	382	-	-	8,067	7,818	-3.1%	31,858	30,666	-3.7%	371	-	-	Stable ridership	
	301 ^[1]	Markham Express	184	-	-	3,885	3,790	-2.4%	15,531	14,541	-6.4%	180	-	-	Stable ridership	
	302 ^[1]	Unionville Express	212	-	-	4,471	4,252	-4.9%	18,008	17,053	-5.3%	202	-	-	Stable ridership	
	303 ^[1]	Bur Oak Express	432	-	-	9,103	9,644	5.9%	37,504	37,611	0.3%	458	-	-	General growth	
	304 ^[1]	Mount Joy Express	290	-	-	6,109	6,483	6.1%	23,989	25,718	7.2%	308	-	-	General growth	
	522	Markham Community Bus	81	83	-	2,042	2,078	1.8%	7,370	7,730	4.9%	84	77	-	Stable ridership	
	TTC	Markham Total	13,941	4,101	2,285	321,930	326,374	1.4%	1,200,276	1,211,747	1.0%	14,032	4,444	2,580		
	TTC 17A ^[1]	Birchmount	223	-	-	4,683	3,570	-23.8%	15,533	13,738	-11.6%	170	-	-	Decreased employment travel	
	TTC 24D, 224B/C/D ^[1]	Vic Park North (Woodbine)	1,012	83	35	21,759	22,431	3.1%	93,402	95,153	1.9%	1,030	104	77	Stable ridership	
	TTC 68B ^[1]	Warden North	843	320	210	20,033	20,044	0.1%	91,455	90,703	-0.8%	837	363	203	Stable ridership	
	TTC 102D ^[1]	Markham Rd	979	353	219	23,066	20,970	-9.1%	105,472	104,946	-0.5%	874	379	220	Decreased employment travel	
	TTC 129A ^[1]	McCowan North	2,262	1,081	743	55,541	53,984	-2.8%	258,315	250,732	-2.9%	2,238	1,024	578	Stable ridership	
		TTC (Markham) Total	5,319	1,837	1,207	125,082	120,999	-3.3%	564,177	555,272	-1.6%	5,149	1,870	1,078		
		Markham & TTC Total	19,260	5,938	3,492	447,012	447,373	0.1%	1,764,453	1,767,019	0.1%	19,181	6,314	3,658		
	Vaughan, King	4/4A ^[1]	Major Mackenzie	3,330	1,590	1,346	83,498	87,792	5.1%	303,895	315,555	3.8%	3,504	1,817	1,334	Stable ridership
		5 ^[1]	Clark	1,501	445	-	33,455	36,713	9.7%	134,400	141,908	5.6%	1,640	538	-	Increased travel to Finch terminal
7 ^[1]		Martin Grove	997	198	-	21,933	20,958	-4.4%	85,033	79,512	-6.5%	963	151	-	Frequency widened during the AM and PM weekday rush hour and midday periods in November 2014	
10 ^[1]		Woodbridge	313	91	107	7,544	7,098	-5.9%	34,144	29,818	-12.7%	332	7	9	Dial-a-Ride implement on weekends April 2014.	
12		Pine Valley	467	193	-	10,698	11,998	12.2%	39,539	41,979	6.2%	532	186	-	Increased ridership to Vaughan Mills Mall	
13		Islington	484	126	-	10,820	10,459	-3.3%	40,346	41,229	2.2%	471	118	-	Stable ridership	
20/20A ^[1]		Jane	2,826	1,664	1,183	72,639	84,449	16.3%	294,803	311,016	5.5%	3,221	2,089	1,547	Route 20A implemented September 2014	
21		Vellore Local	171	-	-	3,609	5,063	40.3%	14,034	18,544	32.1%	240	-	-	Tommy Douglas Secondary School opened February 3, 2015	
22/22A ^[1]		King City	1,638	78	-	34,891	40,129	15.0%	145,332	153,252	5.4%	1,890	61	-	Frequency increase February 23, 2014	
23 ^[1]		Thornhill Woods	715	-	-	15,109	15,649	3.6%	62,450	55,743	-10.7%	743	-	-	Stable ridership; Midday and evening service discontinued between Promenade Mall and Finch GO Bus Terminal April 20, 2014	
26		Maple Local	516	175	95	12,060	12,603	4.5%	43,419	46,816	7.8%	562	105	68	Stable ridership	
28		Huntington	26	-	-	551	872	58.3%	3,491	4,012	14.9%	41	-	-	Route restructured July 2014; service extended to Huntington Road area	
61		King Local	16	-	-	337	212	-37.1%	1,135	851	-25.0%	10	-	-	Decreased travel to GO Train station	
77/77A ^[1]		Highway 7	4,544	1,661	1,398	109,767	117,530	7.1%	407,127	449,574	10.4%	4,912	2,118	1,055	Route travels through vivaNext construction zone; Route 77A branch service introduced on July 14, 2014	
99 (incl. 98E, 98/99) ^[1]		Yonge	2,434	1,414	1,382	64,061	52,289	-18.4%	230,360	197,875	-14.1%	1,887	1,333	1,429	Weekday frequency reduction January 2015	
360 ^[1]		Vaughan Express	244	-	-	5,217	5,740	10.0%	21,374	22,023	3.0%	270	-	-	General growth	
760 ^[1]		Vaughan Mills/Wonderland	-	-	-	-	-	-	1,053	1,042	-1.0%	-	-	-	Seasonal service suspended January 4, 2015 and resumed in May, 2015	
TTC		Vaughan Total	20,222	7,635	5,511	486,189	509,554	4.8%	1,861,935	1,910,749	2.6%	21,218	8,523	5,442		
TTC 35D ^[1]		Jane	895	-	-	18,795	16,863	-10.3%	81,973	77,809	-5.1%	803	-	-	Ridership migration to Route 20	
TTC 105/105-B ^[1]		Dufferin North	2,064	707	521	48,777	45,874	-6.0%	206,834	194,607	-5.9%	1,923	769	483	General decrease	
TTC 107B/C/D ^[1]	Keele North	2,248	639	356	51,544	51,027	-1.0%	249,969	232,354	-7.0%	2,237	635	302	Stable ridership		
TTC 160 ^[1]	Bathurst North	726	431	240	18,170	15,902	-12.5%	71,883	67,791	-5.7%	603	496	251	General decrease		
TTC 165D/F ^[1]	Weston Road North	1,536	654	438	37,062	34,779	-6.2%	183,781	170,014	-7.5%	1,438	579	453	General decrease		
	TTC (Vaughan) Total	7,469	2,431	1,555	174,348	164,445	-5.7%	794,440	742,575	-6.5%	7,004	2,479	1,489			
	Vaughan & TTC Total	27,691	10,066	7,066	660,537	673,999	2.0%	2,656,375	2,653,324	-0.1%	28,222	11,002	6,931			

* Route crosses municipal boundaries.

	YRT Route #	Route Name	2014			TOTAL BOARDINGS (MONTH)			TOTAL BOARDINGS (YEAR TO DATE)			2015			
			Avg Wkdy Boardings	Avg Sat Boardings	Avg Sn/Hol Boardings	2014	2015	Percentage ('15 vs '14)	2014	2015	Percentage ('15 vs '14)	Avg Wkdy Boardings	Avg Sat Boardings	Avg Sn/Hol Boardings	
Richmond Hill	80	Elgin Mills	549	290	131	13,380	13,372	-0.1%	49,786	49,329	-0.9%	557	219	152	Stable ridership
	81	Inspiration	223	-	-	4,692	5,152	9.8%	17,477	18,479	5.7%	245	-	-	General growth
	82	Valleymede	379	-	-	7,983	8,852	10.9%	28,739	31,864	10.9%	421	-	-	General growth
	83/83A	Trench	864	-	-	18,166	20,864	14.9%	76,313	84,369	10.6%	992	-	-	General growth
	84	Oak Ridges	216	19	-	4,617	4,105	-11.1%	16,809	15,285	-9.1%	193	10	-	Rush hour frequency reduction implemented April 2014; Dial-a-Ride service converted to 60-minute on-request bookings effective Feb. 2, 2015
	85/85C ^[1]	Rutherford	3,225	1,857	1,003	80,660	86,244	6.9%	298,363	316,002	5.9%	3,391	2,146	1,224	General growth
	86	Newkirk-Red Maple	969	256	-	21,417	22,702	6.0%	81,274	86,624	6.6%	1,025	286	-	General growth
	87 ^[1]	Autumn Hill	496	-	-	10,438	11,989	14.9%	36,470	42,899	17.6%	569	-	-	General growth
	88/88A ^[1]	Bathurst	4,009	2,174	1,891	103,101	116,566	13.1%	408,574	444,416	8.8%	4,669	2,315	1,762	General growth
	589/590	RH Community Bus	153	58	122	4,065	4,240	4.3%	15,734	14,489	-7.9%	172	81	59	Stable ridership
	90/90B ^[1]	Leslie	2,593	886	518	60,812	74,621	22.7%	261,137	285,043	9.2%	3,210	1,051	551	General growth: Additional northbound trips added to schedule during weekday morning rush hour effective April 2015 to address overcrowding
	91/91A/91B/91E ^[1]	Bayview/Express	3,918	1,514	1,298	95,027	91,291	-3.9%	354,183	352,984	-0.3%	3,749	1,694	1,093	Stable ridership: Frequency reduction January 2015
	240	Mill Pond GO Shuttle	114	-	-	2,399	2,042	-14.9%	9,740	8,697	-10.7%	97	-	-	Decreased travel to GO train station
	241	Bev. Acres GO Shuttle	70	-	-	1,471	1,407	-4.4%	5,672	5,324	-6.1%	67	-	-	Decreased travel to GO train station
	242	N. Richvale GO Shuttle	29	-	-	611	589	-3.6%	2,635	2,578	-2.2%	28	-	-	Stable ridership
243	Redstone GO Shuttle	175	-	-	3,682	3,572	-3.0%	15,297	13,890	-9.2%	170	-	-	Stable ridership	
244	Beaver Creek Shuttle	51	-	-	1,074	1,071	-0.3%	4,087	4,328	5.9%	51	-	-	Stable ridership	
	Richmond Hill Total	18,033	7,054	4,963	433,595	468,679	8.1%	1,682,290	1,776,600	5.6%	19,606	7,802	4,841		
Aurora	31 ^[1]	Aurora North	109	-	-	2,290	2,321	1.4%	8,042	8,044	0.0%	110	-	-	Stable ridership
	32	Aurora South	528	21	-	11,173	10,998	-1.6%	39,953	41,223	3.2%	519	19	-	Stable ridership: Dial-a-Ride service converted to 60-minute on-request bookings effective Feb. 2, 2015
	33/33A	Wellington	515	130	-	11,353	11,747	3.5%	42,419	44,488	4.9%	536	112	-	33 branch restructured to operate via Don Hillcock Dr. in June 2014; improved connections to St. Maximilian Kolbe H.S. implemented Nov 2014
	Aurora Total	1,152	151	-	24,816	25,066	1.0%	90,414	93,755	3.7%	1,165	131	-		
Newmarket, East Gwill., Georgina	44	Bristol	289	84	-	6,436	6,339	-1.5%	23,510	24,301	3.4%	286	78	-	Stable ridership
	50/50B	Queensway	1,087	655	461	28,084	27,186	-3.2%	103,942	103,020	-0.9%	1,043	718	412	Stable ridership: vivaNext construction occurring along Davis Drive
	51	Keswick Local	202	42	-	4,441	4,281	-3.6%	16,198	16,321	0.8%	196	35	-	Stable ridership: route restructured Jan 2015
	52 ^[1]	Holland Landing	233	107	-	5,365	5,477	2.1%	19,772	19,818	0.2%	233	135	-	Stable ridership: construction on 2nd Concession between Green Lane and Mount Albert Road and related detour
	54 ^[1]	Bayview	418	133	-	9,363	8,272	-11.7%	34,116	30,917	-9.4%	366	137	-	Schedule adjustments and reduced midday frequency implemented Nov 2014
	55/55B	Davis Drive	1,046	557	336	26,019	24,866	-4.4%	96,176	94,793	-1.4%	1,002	559	292	Stable ridership: vivaNext construction occurring along Davis Drive: route travels through construction zone
	56	Gorham-Eagle	489	252	147	12,075	11,511	-4.7%	45,682	43,580	-4.6%	471	237	123	Stable ridership
	57/57A	Mulock	979	397	188	23,184	24,170	4.3%	83,361	88,583	6.3%	1,021	408	192	Stable ridership
	58 ^[1]	Mount Albert	125	-	-	2,643	2,728	3.2%	9,482	9,811	3.5%	128	7	-	Stable ridership: Saturday Dial-a-Ride service added April 2014
	98 ^[1]	Yonge	665	461	281	17,292	18,474	6.8%	67,147	69,779	3.9%	705	478	333	Stable ridership
222 ^[1]	Aurora-Nwmkt GO Shuttle	51	-	-	1,073	1,116	4.0%	4,647	4,737	1.9%	53	-	-	Stable ridership	
223	Newmarket GO Shuttle	20	-	-	425	400	-5.9%	1,583	1,540	-2.7%	19	-	-	Decreased travel to GO train station	
520/521	Newmarket Community Bus	86	22	27	2,038	2,068	1.5%	7,540	7,562	0.3%	87	31	21	Stable ridership	
	Newmarket Total	5,690	2,711	1,440	138,439	136,889	-1.1%	513,155	514,762	0.3%	5,610	2,823	1,373		
	YRT SUB-TOTAL	71,826	25,920	16,961	1,704,399	1,752,006	2.8%	6,706,687	6,805,460	1.5%	73,784	28,072	16,803		
Viva ^[2]	blue/blue 'A' ^[1]	Yonge Corridor	17,817	13,130	9,005	476,837	473,065	-0.8%	1,856,925	1,763,012	-5.1%	17,850	12,318	8,927	Frequency reduction January 2015
	purple ^[1]	Highway 7 Corridor	7,165	4,932	3,412	188,093	198,800	5.7%	812,992	781,886	-3.8%	7,683	4,740	3,414	General corridor growth
	pink ^[1]	Finch - Unionville	2,365	-	-	49,771	48,930	-1.7%	200,483	197,597	-1.4%	2,326	-	-	Stable ridership
	orange (incl. Züm) ^[1]	Vaughan North-South Link	2,073	665	437	48,464	43,893	-9.4%	209,206	180,262	-13.8%	1,926	443	312	Service between Pine Valley Dr and Islington Ave discontinued during weekday evenings and on weekends effective April 2014
	green ^[1]	Markham North-South Link	636	-	-	13,376	12,211	-8.7%	56,767	50,462	-11.1%	581	-	-	General corridor decrease
	Viva SUB-TOTAL	30,056	18,727	12,854	776,541	776,899	0.0%	3,136,373	2,973,219	-5.2%	30,366	17,501	12,653		

[1] Route crosses municipal boundaries.

[2] Viva ridership data adjustment is derived on a monthly basis, and compensates for temporary malfunctions of on-board automatic passenger counter (APC) equipment, and/or for drivers not logging onto Init APC system.

Tot. Boardings	YRT/MIVA SYSTEM TOTAL	101,882	44,647	29,815	2,480,940	2,528,905	1.9%	9,843,060	9,778,679	-0.7%	104,150	45,573	29,456
-----------------------	------------------------------	----------------	---------------	---------------	------------------	------------------	-------------	------------------	------------------	--------------	----------------	---------------	---------------

Rev. Boardings	YRT/MIVA SYSTEM TOTAL				1,815,289	1,885,935	3.9%	7,208,230	7,249,735	0.6%	77,670		
-----------------------	------------------------------	--	--	--	------------------	------------------	-------------	------------------	------------------	-------------	---------------	--	--

YORK REGION TRANSIT / VIVA - MONTHLY RIDERSHIP SUMMARY (Actual)

May 2015

Rev: June 16, 2015

May-15

May-14

20 weekdays, 5 Saturdays, 6 Sunday/Holidays

21 weekdays, 5 Saturdays, 5 Sunday/Holidays

YRT	Route #	Route Name	2014			TOTAL BOARDINGS (MONTH)			TOTAL BOARDINGS (YEAR TO DATE)			2015			Notes
			Avg Wkdy Boardings	Avg Sat Boardings	Avg Sn/Hol Boardings	2014	2015	Percentage ('15 vs '14)	2014	2015	Percentage ('15 vs '14)	Avg Wkdy Boardings	Avg Sat Boardings	Avg Sn/Hol Boardings	
	1 ^[1]	Highway 7	1,917	840	421	46,716	38,948	-16.6%	202,001	184,770	-8.5%	1,607	816	435	Rapidway opening (Bayview to Cedarland); Ridership migration to Viva purple/pink
	2 ^[1]	Milliken	2,068	929	412	50,376	49,088	-2.6%	232,051	234,628	1.1%	2,089	844	487	Stable ridership
	3 ^[1]	Thornhill	1,741	632	359	41,710	33,942	-18.6%	198,723	174,468	-12.2%	1,464	495	343	Weekday frequency reduction January 2015
	8	Kennedy	1,566	760	495	39,310	38,954	-0.9%	170,566	172,743	1.3%	1,628	673	487	Stable ridership
	9 ^[1]	Ninth Line	315	-	-	6,652	6,108	-8.2%	30,849	29,682	-3.8%	304	-	-	Stable ridership
	14	14th Avenue	705	-	-	14,872	14,332	-3.6%	65,652	69,811	6.3%	714	-	-	Stable ridership
	15	Stouffville	18	10	4	455	867	90.5%	1088	3,785	247.9%	36	18	9	New route implemented February 23, 2014
	16	16th Ave	1,522	988	704	40,572	42,651	5.1%	173,674	187,351	7.9%	1,643	1,090	706	Stable ridership
	18	Bur Oak	914	119	-	19,854	21,106	6.3%	90,831	102,285	12.6%	1,015	151	-	Increased demand to/from Bur Oak Secondary School; Restructured to operate along Anqus Glen Blvd in April 2015
	25	Major Mackenzie	679	-	-	14,332	14,173	-1.1%	62,423	64,828	3.9%	706	-	-	Stable ridership
	40	Unionville Local	593	139	109	13,762	12,557	-8.8%	61,402	60,914	-0.8%	557	137	116	Decreased employment travel
	41	Markham Local	286	80	67	6,776	6,302	-7.0%	30,110	29,652	-1.5%	273	85	67	Decreased employment travel
	42	Berczy	141	-	-	2,966	1,801	-39.3%	14,281	8,930	-37.5%	90	-	-	Ridership migration to Route 204
	45	Mingay	87	-	-	1,830	1,944	6.2%	8,282	9,788	18.2%	97	-	-	General growth
	201	Markham GO Shuttle	79	-	-	1,660	1,821	9.7%	9,004	9,939	10.4%	91	-	-	General growth
	202	Unionville GO Shuttle	124	-	-	2,613	2,584	-1.1%	14,359	14,218	-1.0%	129	-	-	Stable ridership
	203	Milliken GO Shuttle	61	-	-	1,284	1,263	-1.6%	6,460	5,909	-8.5%	63	-	-	Stable ridership
	204	Berczy GO Shuttle	-	-	-	-	661	-	-	3,829	-	33	-	-	New route implemented August 30, 2014; Ridership migration from Route 42
	300 ^[1]	Business Express	422	-	-	8,920	7,861	-11.9%	40,778	38,527	-5.5%	391	-	-	Decreased employment travel
	301 ^[1]	Markham Express	186	-	-	3,927	3,468	-11.7%	19,458	18,009	-7.4%	173	-	-	Decreased employment travel
	302 ^[1]	Unionville Express	205	-	-	4,325	4,115	-4.9%	22,333	21,168	-5.2%	205	-	-	Stable ridership
	303 ^[1]	Bur Oak Express	440	-	-	9,274	10,265	10.7%	46,778	47,876	2.3%	512	-	-	General growth
	304 ^[1]	Mount Joy Express	295	-	-	6,221	6,435	3.4%	30,210	32,153	6.4%	321	-	-	Stable ridership
	522	Markham Community Bus	75	77	-	1,971	2,038	3.4%	9,341	9,768	4.6%	83	75	-	Stable ridership
		Markham Total	14,439	4,574	2,571	340,378	323,284	-5.0%	1,540,654	1,535,031	-0.4%	14,224	4,384	2,650	
		TTC 17A ^[1]	223	-	-	4,683	3,400	-27.4%	20,216	17,138	-15.2%	170	-	-	Decreased employment travel
		TTC 24D, 224B/C/D ^[1]	1,012	90	61	22,019	21,586	-2.0%	115,421	116,739	1.1%	1,030	108	73	Stable ridership
		TTC 68B ^[1]	843	320	210	20,353	19,773	-2.8%	111,808	110,476	-1.2%	837	363	203	Stable ridership
		TTC 102D ^[1]	979	353	219	23,419	20,695	-11.6%	128,891	125,641	-2.5%	874	379	220	Stable ridership
		TTC 129A ^[1]	2,262	1,081	743	56,622	53,348	-5.8%	314,937	304,080	-3.4%	2,238	1,024	578	Stable ridership
		TTC (Markham) Total	5,319	1,844	1,233	127,096	118,802	-6.5%	691,273	674,074	-2.5%	5,149	1,874	1,074	
		Markham & TTC Total	19,758	6,418	3,804	467,474	442,086	-5.4%	2,231,927	2,209,105	-1.0%	19,373	6,258	3,724	
	4/4A ^[1]	Major Mackenzie	3,644	1,959	1,709	95,302	90,256	-5.3%	399,197	405,811	1.7%	3,510	2,106	1,517	Stable ridership
	5 ^[1]	Clark	1,449	570	-	33,424	34,696	3.8%	167,824	176,604	5.2%	1,594	532	-	Increased travel to Finch terminal
	7 ^[1]	Martin Grove	912	163	-	20,187	16,908	-16.2%	105,220	96,420	-8.4%	797	163	-	Frequency widened during the AM and PM weekday rush hour and midday periods in November 2014
	10 ^[1]	Woodbridge	322	9	0	6,866	5,958	-13.2%	41,010	35,776	-12.8%	290	9	11	Dial-a-Ride implement on weekends April 2014.
	12	Pine Valley	502	197	-	11,627	11,031	-5.1%	51,166	53,010	3.6%	498	197	-	Stable ridership
	13	Islington	518	130	-	11,693	9,926	-15.1%	52,039	51,155	-1.7%	458	128	-	General decrease
	20/20A ^[1]	Jane	3,251	2,613	1,758	91,014	99,202	9.0%	385,817	410,218	6.3%	3,609	2,804	2,005	Route 20A implemented September 2014
	21	Vellore Local	193	-	-	4,083	4,237	3.8%	18,117	22,781	25.7%	210	-	-	Tommy Douglas Secondary School opened February 3, 2015
	22/22A ^[1]	King City	1,637	78	-	34,930	34,854	-0.2%	180,262	188,106	4.4%	1,718	69	-	Stable ridership
	23 ^[1]	Thornhill Woods	670	-	-	14,147	14,482	2.4%	76,597	70,225	-8.3%	721	-	-	General growth
	26	Maple Local	560	98	77	12,701	11,324	-10.8%	56,120	58,140	3.6%	504	135	83	Decreased travel to Vaughan Mills Mall
	28	Huntington	28	-	-	591	1,047	77.2%	4,082	5,059	23.9%	52	-	-	Route restructured July 2014; service extended to Huntington Road area
	61	King Local	16	-	-	339	181	-46.6%	1,474	1,032	-30.0%	9	-	-	Decreased travel to GO Train station
	77/77A ^[1]	Highway 7	4,529	2,342	1,227	113,719	117,588	3.4%	520,846	567,162	8.9%	4,997	2,042	1,144	Route travels through vivaNext construction zone; Route 77A branch service introduced on July 14, 2014
	99 (incl. 98E, 98/99) ^[1]	Yonge	2,316	1,451	1,582	64,155	51,972	-19.0%	294,515	249,847	-15.2%	1,829	1,389	1,371	Weekday frequency reduction January 2015
	360 ^[1]	Vaughan Express	241	-	-	5,187	5,591	7.8%	26,561	27,614	4.0%	276	-	-	General growth
	760 ^[1]	Vaughan Mills/Wonderland	-	447	318	3,883	5,871	51.2%	4,936	6,913	40.1%	-	650	427	Increased ridership to Wonderland
		Vaughan Total	20,788	10,057	6,671	523,848	515,124	-1.7%	2,385,783	2,425,873	1.7%	21,072	10,224	6,558	
		TTC 35D ^[1]	895	-	-	18,795	16,060	-14.6%	100,768	93,869	-6.8%	803	-	-	Ridership migration to Route 20
		TTC 105/105-B ^[1]	2,064	707	521	49,484	45,338	-8.4%	256,318	239,945	-6.4%	1,923	796	483	Stable ridership
		TTC 107B/C/D ^[1]	2,319	639	356	53,674	50,817	-5.3%	303,643	283,171	-6.7%	2,237	853	302	Stable ridership
		TTC 160 ^[1]	726	431	240	18,601	15,526	-16.5%	90,484	83,317	-7.9%	603	392	251	General decrease
		TTC 165D/F ^[1]	1,536	654	438	37,716	37,078	-1.7%	221,497	207,092	-6.5%	1,438	1,120	453	Stable ridership
		TTC (Vaughan) Total	7,540	2,431	1,555	178,270	164,819	-7.5%	972,710	907,394	-6.7%	7,004	3,161	1,489	
		Vaughan & TTC Total	28,328	12,488	8,226	702,118	679,943	-3.2%	3,358,493	3,333,267	-0.8%	28,076	13,385	8,047	

* Route crosses municipal boundaries.

	YRT Route #	Route Name	2014			TOTAL BOARDINGS (MONTH)			TOTAL BOARDINGS (YEAR TO DATE)			2015			
			Avg Wkdy Boardings	Avg Sat Boardings	Avg Sn/Hol Boardings	2014	2015	Percentage ('15 vs '14)	2014	2015	Percentage ('15 vs '14)	Avg Wkdy Boardings	Avg Sat Boardings	Avg Sn/Hol Boardings	
Richmond Hill	80	Elgin Mills	549	272	214	14,009	14,040	0.2%	63,795	63,369	-0.7%	594	237	157	Stable ridership
	81	Inspiration	255	-	-	5,367	5,106	-4.9%	22,844	23,585	3.2%	255	-	-	Stable ridership
	82	Valleymede	403	-	-	8,475	8,245	-2.7%	37,214	40,109	7.8%	412	-	-	Stable ridership
	83/83A	Trench	1,124	-	-	23,646	24,764	4.7%	99,959	109,133	9.2%	1,236	-	-	General growth
	84	Oak Ridges	191	18	-	4,114	3,894	-5.3%	20,923	19,179	-8.3%	192	9	-	Dial-a-Ride service converted to 60-minute on-request bookings effective Feb. 2, 2015
	85/85C ^[1]	Rutherford	3,517	1,908	1,134	89,571	86,940	-2.9%	387,934	402,942	3.9%	3,506	1,867	1,179	Stable ridership
	86	Newkirk-Red Maple	966	232	-	21,484	21,975	2.3%	102,758	108,599	5.7%	1,029	271	-	Stable ridership
	87 ^[1]	Autumn Hill	425	-	-	8,960	11,452	27.8%	45,430	54,351	19.6%	571	-	-	General growth
	88/88A ^[1]	Bathurst	4,113	2,724	1,919	110,335	111,806	1.3%	518,909	556,222	7.2%	4,393	2,427	1,853	Stable ridership
	589/590	RH Community Bus	147	120	107	4,229	4,064	-3.9%	19,963	18,553	-7.1%	145	155	63	Stable ridership
	90/90B ^[1]	Leslie	3,413	948	527	79,424	78,458	-1.2%	340,561	363,501	6.7%	3,481	1,023	575	Stable ridership: Additional northbound trips added to schedule during weekday morning rush hour effective April 2015 to address overcrowding
	91/91A/91B/91E ^[1]	Bayview/Express	4,268	1,763	934	103,457	95,203	-8.0%	457,640	448,187	-2.1%	3,970	1,721	1,151	Decreased employment travel: Frequency reduction January 2015
	240	Mill Pond GO Shuttle	119	-	-	2,504	2,122	-15.3%	12,244	10,819	-11.6%	106	-	-	Decreased travel to GO train station
	241	Bev. Acres GO Shuttle	62	-	-	1,302	1,180	-9.4%	6,974	6,504	-6.7%	59	-	-	Decreased travel to GO train station
242	N. Richvale GO Shuttle	32	-	-	672	640	-4.8%	3,307	3,218	-2.7%	32	-	-	Stable ridership	
243	Redstone GO Shuttle	155	-	-	3,262	3,221	-1.3%	18,559	17,111	-7.8%	161	-	-	Stable ridership	
244	Beaver Creek Shuttle	53	-	-	1,115	1,021	-8.4%	5,202	5,349	2.8%	51	-	-	Stable ridership	
	Richmond Hill Total	19,792	7,985	4,835	481,926	474,131	-1.6%	2,164,216	2,250,731	4.0%	20,193	7,710	4,978		
Aurora	31 ^[1]	Aurora North	100	-	-	2,105	2,004	-4.8%	10,147	10,048	-1.0%	100	-	-	Stable ridership
	32	Aurora South	497	20	-	10,573	10,523	-0.5%	50,526	51,746	2.4%	519	22	-	Stable ridership: Dial-a-Ride service converted to 60-minute on-request bookings effective Feb. 2, 2015
	33/33A	Wellington	554	125	-	12,306	11,895	-3.3%	54,725	56,383	3.0%	554	152	-	Stable ridership
	Aurora Total	1,151	145	-	24,984	24,422	-2.2%	115,398	118,177	2.4%	1,173	174	-		
Newmarket, East Gwill., Georgina	44	Bristol	294	73	-	6,575	6,255	-4.9%	30,085	30,557	1.6%	291	82	-	Stable ridership
	50	Queensway	1,086	585	502	28,669	27,358	-4.6%	132,611	130,378	-1.7%	1,049	544	529	Stable ridership: vivaNext construction occurring along Davis Drive: Route 50B discontinued in April 2015
	51	Keswick Local	218	33	-	4,770	4,169	-12.6%	20,968	20,490	-2.3%	196	44	-	Route restructured Jan 2015
	52 ^[1]	Holland Landing	243	111	-	5,696	5,310	-6.8%	25,468	25,128	-1.3%	236	110	-	Construction on 2nd Concession between Green Lane and Mount Albert Road and related detour
	54 ^[1]	Bayview	430	146	-	9,834	8,678	-11.8%	43,950	39,595	-9.9%	397	141	-	Schedule adjustments and reduced midday frequency implemented Nov 2014
	55/55B	Davis Drive	1,083	578	352	27,541	25,216	-8.4%	123,717	120,009	-3.0%	1,023	528	331	vivaNext construction occurring along Davis Drive: route travels through construction zone
	56	Gorham-Eagle	472	218	161	11,879	11,730	-1.2%	57,560	55,310	-3.9%	484	205	163	Stable ridership
	57/57A	Mulock	984	391	208	23,794	23,466	-1.4%	107,154	112,050	4.6%	1,013	352	225	Stable ridership
	58 ^[1]	Mount Albert	140	-	-	2,961	2,825	-4.6%	12,443	12,636	1.6%	138	9	-	Stable ridership
	98 ^[1]	Yonge	686	506	324	18,627	20,085	7.8%	85,774	89,864	4.8%	756	491	407	Stable ridership
222 ^[1]	Aurora-Nwmkt GO Shuttle	37	-	-	783	803	2.6%	5,430	5,540	2.0%	40	-	-	Stable ridership	
223	Newmarket GO Shuttle	17	-	-	357	321	-10.1%	1,940	1,861	-4.1%	16	-	-	Decreased travel to GO train station	
520/521	Newmarket Community Bus	80	30	21	1,942	1,923	-1.0%	9,482	9,485	0.0%	84	23	20	Stable ridership	
	Newmarket Total	5,770	2,671	1,568	143,427	138,140	-3.7%	656,582	652,902	-0.6%	5,722	2,529	1,675		
	YRT SUB-TOTAL	74,799	29,707	18,433	1,819,929	1,758,722	-3.4%	8,526,616	8,564,182	0.4%	74,537	30,056	18,424		
Viva ^[2]	blue/blue 'A' ^[1]	Yonge Corridor	18,285	13,947	9,568	514,455	486,175	-5.5%	2,371,380	2,249,187	-5.2%	18,508	12,270	8,609	Frequency reduction January 2015
	purple ^[1]	Highway 7 Corridor	7,179	4,789	3,381	195,001	194,883	-0.1%	1,007,993	976,769	-3.1%	7,500	4,580	3,447	Stable ridership
	pink ^[1]	Finch - Unionville	2,324	-	-	49,280	46,086	-6.5%	249,763	243,683	-2.4%	2,296	-	-	Stable ridership
	orange (incl. Züm) ^[1]	Vaughan North-South Link	2,034	528	383	48,464	41,848	-13.7%	257,670	222,110	-13.8%	1,878	460	323	General corridor decrease
	green ^[1]	Markham North-South Link	606	-	-	14,694	11,861	-19.3%	71,461	62,323	-12.8%	592	-	-	General corridor decrease
	Viva SUB-TOTAL	30,428	19,264	13,332	821,894	780,853	-5.0%	3,958,267	3,754,072	-5.2%	30,774	17,310	12,379		

[1] Route crosses municipal boundaries.

[2] Viva ridership data adjustment is derived on a monthly basis, and compensates for temporary malfunctions of on-board automatic passenger counter (APC) equipment, and/or for drivers not logging onto Init APC system.

Tot. Boardings	YRT/MIVA SYSTEM TOTAL	105,227	48,971	31,765	2,641,823	2,539,575	-3.9%	12,484,883	12,318,254	-1.3%	105,311	47,366	30,803
-----------------------	------------------------------	----------------	---------------	---------------	------------------	------------------	--------------	-------------------	-------------------	--------------	----------------	---------------	---------------

Rev. Boardings	YRT/MIVA SYSTEM TOTAL				1,924,280	1,905,222	-1.0%	9,132,510	9,154,957	0.2%	79,006		
-----------------------	------------------------------	--	--	--	------------------	------------------	--------------	------------------	------------------	-------------	---------------	--	--

YORK REGION TRANSIT / VIVA - MONTHLY RIDERSHIP SUMMARY (Actual)

June 2015

Rev: July 13, 2015

Jun-15	22 weekdays, 4 Saturdays, 4 Sunday/Holidays
Jun-14	21 weekdays, 4 Saturdays, 5 Sunday/Holidays

YRT Route #	Route Name	2014			TOTAL BOARDINGS (MONTH)			TOTAL BOARDINGS (YEAR TO DATE)			2015			Notes
		Avg Wkdy Boardings	Avg Sat Boardings	Avg Sn/Hol Boardings	2014	2015	Percentage ('15 vs '14)	2014	2015	Percentage ('15 vs '14)	Avg Wkdy Boardings	Avg Sat Boardings	Avg Sn/Hol Boardings	
1 ^[1]	Highway 7	1,918	819	421	45,839	41,755	-8.9%	247,840	226,525	-8.6%	1,654	909	408	Rapidway opening (Bayview to Cedarland); Ridership migration to Viva purple/pink
2 ^[1]	Milliken	2,001	918	318	47,536	49,308	3.7%	279,587	283,936	1.6%	1,997	848	450	Stable ridership
3 ^[1]	Thornhill	1,703	663	335	40,276	32,578	-19.1%	238,999	207,046	-13.4%	1,320	441	408	Weekday frequency reduction January 2015
8	Kennedy	1,553	690	497	38,031	39,626	4.2%	208,597	212,369	1.8%	1,586	684	464	Stable ridership
9 ^[1]	Ninth Line	299	-	-	6,339	5,999	-5.4%	37,188	35,681	-4.1%	271	-	-	Stable ridership; Ridership migration to Route 15
14	14th Avenue	611	-	-	12,906	13,635	5.6%	78,558	83,446	6.2%	618	-	-	Stable ridership
15	Stouffville	21	10	7	521	957	83.7%	1609	4,742	194.7%	38	16	11	New route implemented February 23, 2014
16	16th Ave	1,560	1,029	603	40,049	42,051	5.0%	213,723	229,402	7.3%	1,580	1,122	668	Stable ridership
18	Bur Oak	801	117	-	17,344	19,377	11.7%	108,175	121,662	12.5%	853	140	-	Increased demand to/from Bur Oak Secondary School; Restructured to operate along Angus Glen Blvd in April 2015
25	Major Mackenzie	663	-	-	13,992	15,423	10.2%	76,415	80,251	5.0%	699	-	-	General growth
40	Unionville Local	467	118	83	10,742	12,343	14.9%	72,144	73,257	1.5%	516	133	106	General growth
41	Markham Local	292	83	66	6,830	6,351	-7.0%	36,940	36,003	-2.5%	259	81	72	Decreased employment travel
42	Berczy	111	-	-	2,336	1,456	-37.7%	16,617	10,386	-37.5%	66	-	-	Ridership migration to Route 204
45	Mingay	72	-	-	1,516	1,531	1.0%	9,798	11,319	15.5%	69	-	-	Stable ridership
201	Markham GO Shuttle	69	-	-	1,450	1,939	33.7%	10,454	11,878	13.6%	88	-	-	General growth
202	Unionville GO Shuttle	119	-	-	2,503	2,751	9.9%	16,862	16,969	0.6%	125	-	-	Stable ridership
203	Milliken GO Shuttle	61	-	-	1,289	1,344	4.3%	7,749	7,253	-6.4%	61	-	-	Stable ridership
204	Berczy GO Shuttle	-	-	-	-	682	-	-	4,511	-	31	-	-	New route implemented August 30, 2014; Ridership migration from Route 42
300 ^[1]	Business Express	374	-	-	7,901	9,076	14.9%	48,679	47,603	-2.2%	411	-	-	General growth
301 ^[1]	Markham Express	191	-	-	4,029	4,217	4.7%	23,487	22,226	-5.4%	191	-	-	Stable ridership
302 ^[1]	Unionville Express	217	-	-	4,576	4,393	-4.0%	26,909	25,561	-5.0%	199	-	-	Stable ridership
303 ^[1]	Bur Oak Express	440	-	-	9,268	11,251	21.4%	56,046	59,127	5.5%	510	-	-	General growth
304 ^[1]	Mount Joy Express	281	-	-	5,933	7,396	24.7%	36,143	39,549	9.4%	335	-	-	General growth
522	Markham Community Bus	75	64	-	1,841	2,164	17.5%	11,182	11,932	6.7%	86	66	-	General growth
	Markham Total	13,899	4,511	2,330	323,047	327,603	1.4%	1,863,701	1,862,634	-0.1%	13,563	4,440	2,587	
TTC 17A ^[1]	Birchmount	223	-	-	4,683	3,740	-20.1%	24,899	20,878	-16.1%	170	-	-	Decreased employment travel
TTC 24D, 224B/C/D ^[1]	Vic Park North (Woodbine)	1,012	96	63	21,958	23,390	6.5%	137,379	140,129	2.0%	1,030	106	76	Stable ridership
TTC 68B ^[1]	Warden North	843	320	210	20,033	20,678	3.2%	131,841	131,154	-0.5%	837	363	203	Stable ridership
TTC 102D ^[1]	Markham Rd	979	353	219	23,066	21,624	-6.3%	151,957	147,265	-3.1%	874	379	220	Stable ridership
TTC 129A ^[1]	McCowan North	2,262	1,081	743	55,541	55,644	0.2%	370,478	359,724	-2.9%	2,238	1,024	578	Stable ridership
	TTC (Markham) Total	5,319	1,850	1,235	125,281	125,076	-0.2%	816,554	799,150	-2.1%	5,149	1,872	1,077	
	Markham & TTC Total	19,218	6,361	3,565	448,328	452,679	1.0%	2,680,255	2,661,784	-0.7%	18,712	6,312	3,664	
4/4A ^[1]	Major Mackenzie	3,736	2,538	1,798	98,162	94,054	-4.2%	497,359	499,865	0.5%	3,582	1,922	1,768	Stable ridership
5 ^[1]	Clark	1,377	445	-	30,887	32,611	5.6%	198,711	209,215	5.3%	1,382	516	-	Stable ridership
7 ^[1]	Martin Grove	848	160	-	18,688	17,969	-3.8%	123,908	114,389	-7.7%	786	123	-	Frequency widened during the AM and PM weekday rush hour and midday periods in November 2014
10 ^[1]	Woodbridge	326	8	12	7,014	6,379	-9.1%	48,024	42,155	-12.2%	282	10	13	Dial-a-Ride implement on weekends April 2014.
12	Pine Valley	497	202	-	11,342	11,865	4.6%	62,508	64,875	3.8%	502	185	-	Stable ridership
13	Islington	423	141	-	9,571	10,766	12.5%	61,610	61,921	0.5%	457	138	-	Stable ridership
20/20A ^[1]	Jane	3,521	2,503	2,065	95,203	94,660	-0.6%	481,020	504,878	5.0%	3,680	1,074	2,088	Stable ridership; Route 20A implemented September 2014
21	Vellore Local	168	-	-	3,549	4,271	20.3%	21,666	27,052	24.9%	192	-	-	Tommy Douglas Secondary School opened February 3, 2015
22/22A ^[1]	King City	1,555	96	-	33,216	37,330	12.4%	213,478	225,436	5.6%	1,673	82	-	General growth
23 ^[1]	Thornhill Woods	640	-	-	13,513	14,542	7.6%	90,110	84,767	-5.9%	658	-	-	Stable ridership
26	Maple Local	480	150	79	11,154	11,179	0.2%	67,274	69,319	3.0%	469	100	101	Stable ridership
28	Huntington	31	-	-	655	1,044	59.4%	4,737	6,103	28.8%	47	-	-	Route restructured July 2014; service extended to Huntington Road area
61	King Local	14	-	-	294	264	-10.2%	1,768	1,296	-26.7%	12	-	-	Decreased travel to GO Train station
77/77A ^[1]	Highway 7	4,594	2,332	1,331	113,148	120,253	6.3%	633,994	687,415	8.4%	4,900	1,707	1,251	Stable ridership; Route travels through vivaNext construction zone; Route 77A branch service introduced on July 14, 2014
99 (incl. 98E, 98/99) ^[1]	Yonge	2,320	1,247	1,568	61,941	51,183	-17.4%	356,456	301,030	-15.5%	1,850	1,329	1,255	Weekday frequency reduction January 2015
360 ^[1]	Vaughan Express	223	-	-	4,805	5,718	19.0%	31,366	33,332	6.3%	256	-	-	General growth
760 ^[1]	Vaughan Mills/Wonderland	-	431	331	3,451	4,152	20.3%	8,387	11,065	31.9%	-	574	382	Increased ridership to Wonderland; weekday service operated one day in June 2015
	Vaughan Total	20,753	10,253	7,184	516,593	518,240	0.3%	2,902,376	2,944,113	1.4%	21,002	7,760	6,858	
TTC 35D ^[1]	Jane	895	-	-	18,795	17,666	-6.0%	119,563	111,535	-6.7%	803	-	-	Ridership migration to Route 20
TTC 105/105-B ^[1]	Dufferin North	2,064	707	521	48,777	47,422	-2.8%	305,095	287,367	-5.8%	1,923	796	483	Stable ridership
TTC 107B/C/D ^[1]	Keele North	2,319	639	356	53,035	53,834	1.5%	356,678	337,005	-5.5%	2,237	853	302	Stable ridership
TTC 160 ^[1]	Bathurst North	726	431	240	18,170	15,838	-12.8%	108,654	99,155	-8.7%	603	392	251	General decrease
TTC 165D/F ^[1]	Weston Road North	1,536	654	438	37,062	37,928	2.3%	258,559	245,020	-5.2%	1,438	1,120	453	Stable ridership
	TTC (Vaughan) Total	7,540	2,431	1,555	175,839	172,688	-1.8%	1,148,549	1,080,082	-6.0%	7,004	3,161	1,489	
	Vaughan & TTC Total	28,293	12,684	8,739	692,432	690,928	-0.2%	4,050,925	4,024,195	-0.7%	28,006	10,921	8,347	

* Route crosses municipal boundaries.

	YRT Route #	Route Name	2014			TOTAL BOARDINGS (MONTH)			TOTAL BOARDINGS (YEAR TO DATE)			2015			
			Avg Wkly Boardings	Avg Sat Boardings	Avg Sn/Hol Boardings	2014	2015	Percentage ('15 vs '14)	2014	2015	Percentage ('15 vs '14)	Avg Wkly Boardings	Avg Sat Boardings	Avg Sn/Hol Boardings	
Richmond Hill	80	Elgin Mills	574	327	145	14,094	14,078	-0.1%	77,889	77,447	-0.6%	575	215	134	Stable ridership
	81	Inspiration	180	-	-	3,794	4,011	5.7%	26,638	27,596	3.6%	182	-	-	Stable ridership
	82	Valleymede	306	-	-	6,464	6,547	1.3%	43,678	46,656	6.8%	297	-	-	Stable ridership
	83/83A	Trench	905	-	-	19,119	20,502	7.2%	119,078	129,635	8.9%	930	-	-	General growth
	84	Oak Ridges	144	19	-	3,110	3,205	3.1%	24,033	22,384	-6.9%	144	9	-	Dial-a-Ride service converted to 60-minute on-request bookings effective Feb. 2, 2015
	85/85C ^[1]	Rutherford	3,439	1,749	1,284	86,106	90,034	4.6%	474,040	492,976	4.0%	3,499	1,757	1,400	Stable ridership
	86	Newkirk-Red Maple	808	235	-	18,208	20,926	14.9%	120,966	129,525	7.1%	906	241	-	General growth
	87 ^[1]	Autumn Hill	440	-	-	9,254	9,621	4.0%	54,684	63,972	17.0%	431	-	-	Stable ridership
	88/88A ^[1]	Bathurst	3,992	2,268	2,337	105,280	112,484	6.8%	624,189	668,706	7.1%	4,280	2,523	1,907	Stable ridership
	589/590	RH Community Bus	114	122	130	3,536	1,874	-47.0%	23,499	20,427	-13.1%	65	59	51	General decrease
	90/90B ^[1]	Leslie	3,359	924	453	76,926	81,199	5.6%	417,487	444,700	6.5%	3,387	1,038	575	Stable ridership; Additional northbound trips added to schedule during weekday morning rush hour effective April 2015 to address overcrowding
	91/91A/91B/91E ^[1]	Bayview/Express	4,120	1,619	917	98,007	95,005	-3.1%	555,647	543,192	-2.2%	3,794	1,628	1,181	Decreased employment travel; Frequency reduction January 2015
	240	Mill Pond GO Shuttle	96	-	-	2,018	2,290	13.5%	14,262	13,109	-8.1%	104	-	-	Increased travel to GO train station
	241	Bev. Acres GO Shuttle	56	-	-	1,176	1,035	-12.0%	8,150	7,539	-7.5%	47	-	-	Decreased travel to GO train station
242	N. Richvale GO Shuttle	28	-	-	592	705	19.1%	3,899	3,923	0.6%	32	-	-	Stable ridership	
243	Redstone GO Shuttle	147	-	-	3,089	3,720	20.4%	21,648	20,831	-3.8%	169	-	-	Increased travel to GO train station	
244	Beaver Creek Shuttle	52	-	-	1,094	1,125	2.8%	6,296	6,474	2.8%	51	-	-	Stable ridership	
	Richmond Hill Total	18,760	7,263	5,266	451,867	468,361	3.7%	2,616,083	2,719,092	3.9%	18,893	7,470	5,248		
Aurora	31 ^[1]	Aurora North	75	-	-	1,580	1,653	4.6%	11,727	11,701	-0.2%	75	-	-	Stable ridership
	32	Aurora South	409	22	-	8,728	8,944	2.5%	59,254	60,690	2.4%	401	17	-	Stable ridership; Dial-a-Ride service converted to 60-minute on-request bookings effective Feb. 2, 2015
	33/33A	Wellington	447	121	-	9,901	10,720	8.3%	64,626	67,103	3.8%	461	134	-	Stable ridership
	Aurora Total	931	143	-	20,209	21,317	5.5%	135,607	139,494	2.9%	937	151	-		
Newmarket, East Gwill., Georgina	44	Bristol	251	68	-	5,574	5,913	6.1%	35,659	36,470	2.3%	254	71	-	Stable ridership
	50	Queensway	1,087	699	516	28,583	27,836	-2.6%	161,194	158,214	-1.8%	1,045	660	437	Stable ridership; vivaNext construction occurring along Davis Drive; Route 50B discontinued in April 2015
	51	Keswick Local	171	27	-	3,720	3,521	-5.3%	24,688	24,011	-2.7%	152	38	-	Route restructured Jan 2015
	52 ^[1]	Holland Landing	227	118	-	5,288	5,238	-1.0%	30,756	30,366	-1.3%	214	120	-	Stable ridership; Construction on 2nd Concession between Green Lane and Mount Albert Road and related detour
	54 ^[1]	Bayview	408	155	-	9,270	8,180	-11.8%	53,220	47,775	-10.2%	344	142	-	Schedule adjustments and reduced midday frequency implemented Nov 2014
	55/55B	Davis Drive	1,079	519	326	26,502	22,338	-15.7%	150,219	142,347	-5.2%	884	386	308	vivaNext construction occurring along Davis Drive; route travels through construction zone
	56	Gorham-Eagle	446	230	124	10,969	11,005	0.3%	68,530	66,315	-3.2%	437	203	131	Stable ridership
	57/57A	Mulock	914	321	218	21,705	21,983	1.3%	128,860	134,033	4.0%	904	310	174	Stable ridership
	58 ^[1]	Mount Albert	136	12	-	2,917	3,087	5.8%	15,360	15,723	2.4%	137	10	-	Stable ridership
	98 ^[1]	Yonge	636	444	344	16,941	19,187	13.3%	102,715	109,051	6.2%	726	461	325	Stable ridership
	222 ^[1]	Aurora-Nwmkl GO Shuttle	32	-	-	673	1,302	93.5%	6,103	6,842	12.1%	59	-	-	Increased travel to GO train station
223	Newmarket GO Shuttle	16	-	-	338	290	-14.2%	2,278	2,151	-5.6%	13	-	-	Decreased travel to GO train station	
520/521	Newmarket Community Bus	88	27	19	2,064	1,763	-14.6%	11,546	11,248	-2.6%	72	25	18	General decrease	
	Newmarket Total	5,490	2,620	1,547	134,545	131,644	-2.2%	791,127	784,546	-0.8%	5,243	2,426	1,393		
	YRT SUB-TOTAL	72,692	29,071	19,117	1,747,381	1,764,929	1.0%	10,273,997	10,329,111	0.5%	71,791	27,280	18,652		
Viva ^[2]	blue/blue 'A' ^[1]	Yonge Corridor	18,668	13,237	10,019	497,377	488,005	-1.9%	2,868,757	2,737,192	-4.6%	18,395	12,087	8,651	Frequency reduction January 2015
	purple ^[1]	Highway 7 Corridor	7,026	4,623	3,642	184,372	195,885	6.2%	1,192,365	1,172,654	-1.7%	7,476	4,561	3,249	Stable ridership
	pink ^[1]	Finch - Unionville	2,291	-	-	48,138	51,669	7.3%	297,901	295,352	-0.9%	2,346	-	-	Stable ridership
	orange (incl. Züm) ^[1]	Vaughan North-South Link	2,070	519	376	47,496	45,763	-3.6%	305,166	267,873	-12.2%	1,936	434	323	General corridor decrease
	green ^[1]	Markham North-South Link	608	-	-	12,790	12,582	-1.6%	84,251	74,905	-11.1%	571	-	-	General corridor decrease
	Viva SUB-TOTAL	30,663	18,379	14,037	790,173	793,904	0.5%	4,748,440	4,547,976	-4.2%	30,724	17,082	12,223		

[1] Route crosses municipal boundaries.

[2] Viva ridership data adjustment is derived on a monthly basis, and compensates for temporary malfunctions of on-board automatic passenger counter (APC) equipment, and/or for drivers not logging onto Init APC system.

Tot. Boardings	YRT/VIVA SYSTEM TOTAL	103,355	47,450	33,154	2,537,554	2,558,833	0.8%	15,022,437	14,877,087	-1.0%	102,515	44,362	30,875
-----------------------	------------------------------	----------------	---------------	---------------	------------------	------------------	-------------	-------------------	-------------------	--------------	----------------	---------------	---------------

Rev. Boardings	YRT/VIVA SYSTEM TOTAL	1,842,496	1,876,360	1.8%	10,975,006	11,031,317	0.5%	75,173
-----------------------	------------------------------	------------------	------------------	-------------	-------------------	-------------------	-------------	---------------



YORK
REGION
TRANSIT

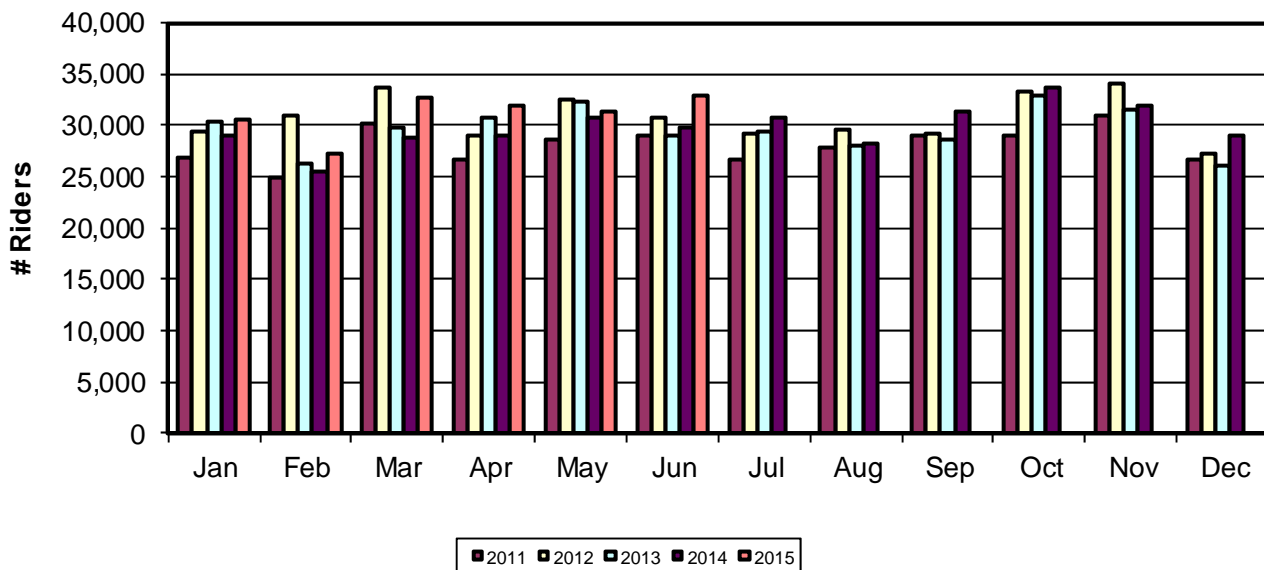


YRT/Viva

2015 Ridership Summary (Actual)

Specialized Services – Mobility Plus

Five-Year Ridership by Month



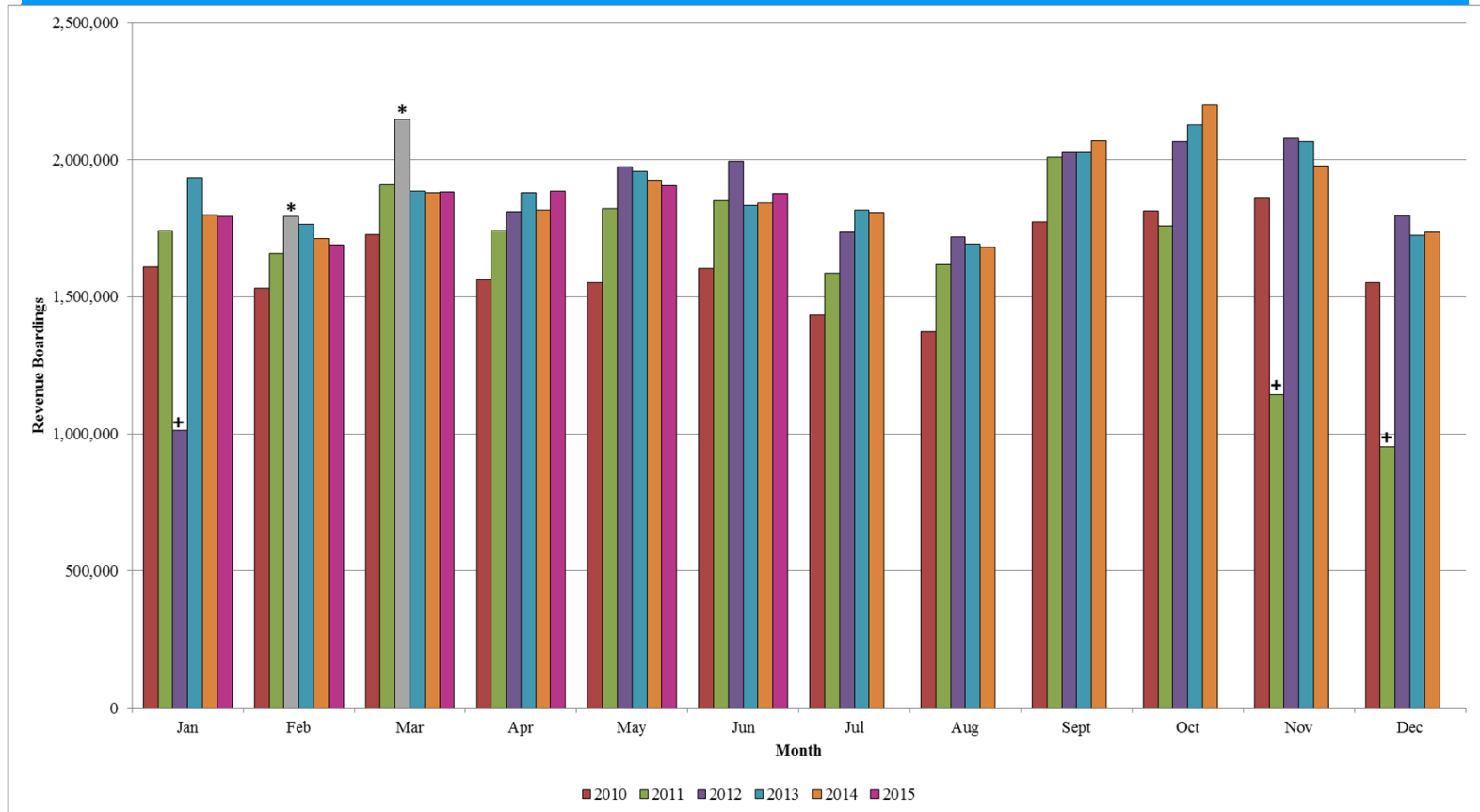
Month	2014 Ridership	2015 Ridership	Monthly Change ('15 vs. '14)	Year to Date (YTD) Change	Average Weekday Revenue Ridership 2015
January	28,972	30,516	5.3%	5.3%	1,278
February	25,419	27,332	7.5%	6.4%	1,300
March	28,863	32,803	13.7%	8.9%	1,345
April	28,915	31,862	10.2%	9.2%	1,392
May	30,811	31,263	1.5%	7.6%	1,399
June	29,859	32,954	10.4%	8.0%	1,354
July	30,749				
August	28,316				
September	31,318				
October	33,679				
November	31,972				
December	29,036				

YTD 357,909 186,730

YRT/Viva

2015 Revenue Ridership Summary (Actual)

Conventional and BRT services including contracted TTC services north of Steeles Avenue



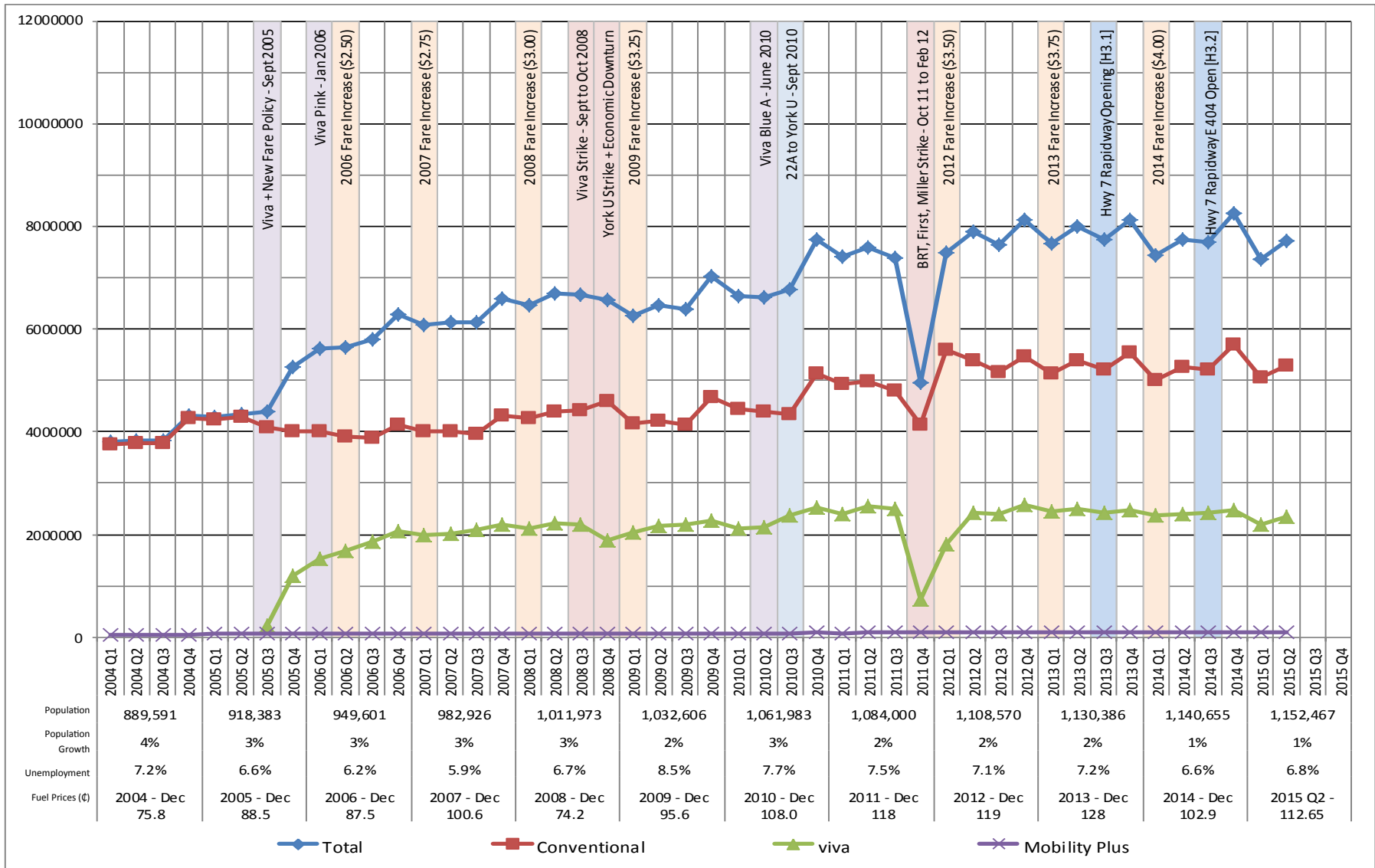
* February & March 2012 estimated revenue ridership due to free transit service.

+ Monthly ridership numbers from November 2011 to January 2012 are based on Veolia Transportation, TTC, and Dial-a-Ride services, due to operator strike from October 24, 2011 to February 3, 2012.

Month	2014 Ridership	2015 Ridership	Monthly Change ['15 vs '14]	Year to Date (YTD) Change	Average Weekday Revenue Ridership 2015
January	1,799,396	1,792,864	- 0.4%	- 0.4%	73,700
February	1,712,672	1,689,800	-1.3%	-0.8%	77,211
March	1,880,873	1,881,136	0.0%	-0.5%	73,657
April	1,815,289	1,885,935	3.9%	0.6%	77,670
May	1,924,280	1,905,222	-1.0%	0.2%	79,006
June	1,842,496	1,876,360	1.8%	0.5%	75,173
July	1,806,567				
August	1,681,947				
September	2,069,584				
October	2,198,013				
November	1,977,952				
December	1,736,428				
YTD Total	22,445,497	11,031,317			

Total Boardings by Quarter

2004 to Present

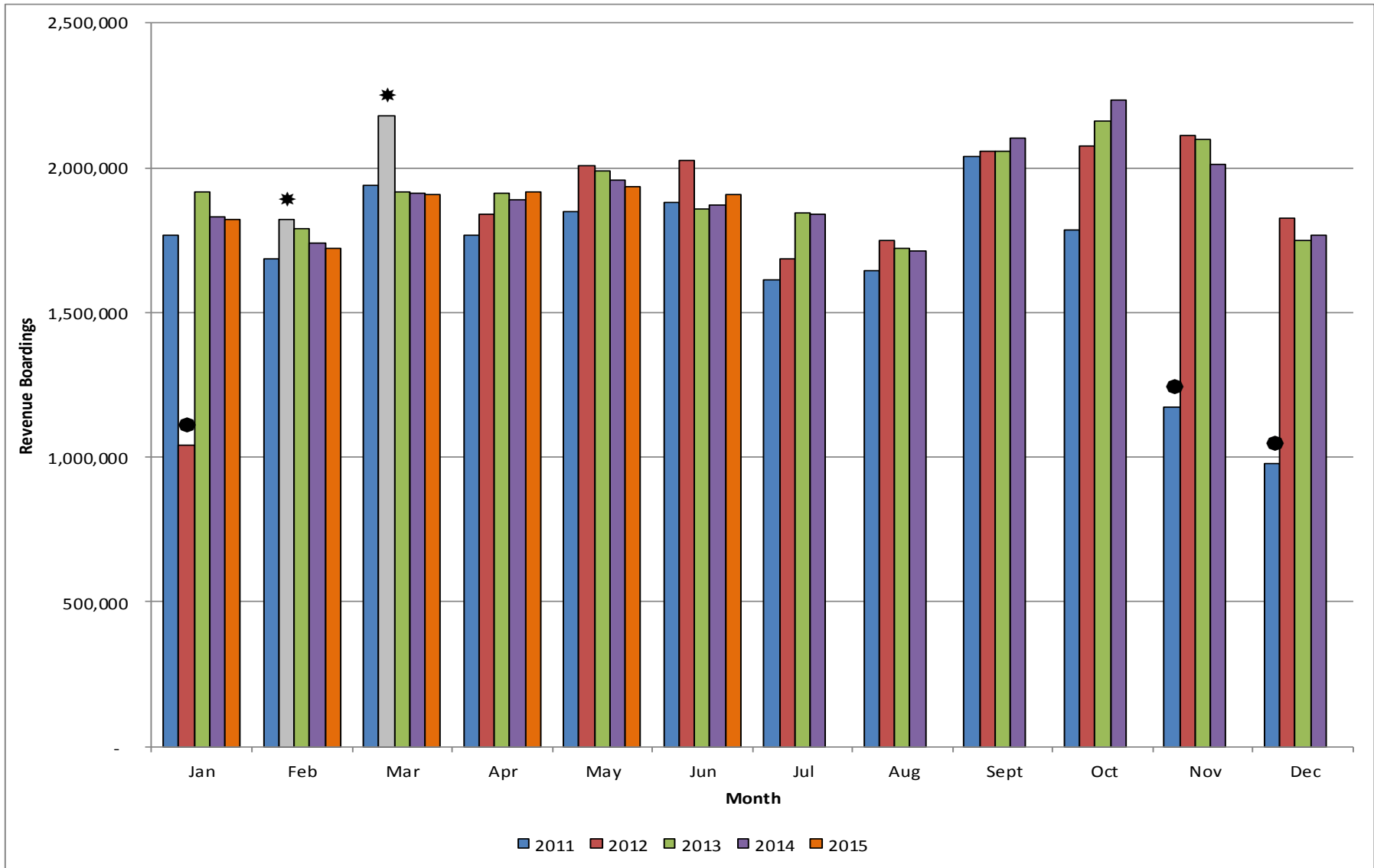


Notes:

- Population figures are for year-end. Source: York Region Long Range Planning, based on Statistics Canada and CMHC Housing Completion Data
- Fuel price source: Ministry of Energy and Infrastructure (<http://www.energy.gov.on.ca/en/fuel-prices/>)
- Unemployment rate source: Statistics Canada (<http://www.statcan.gc.ca/start-debut-eng.html>)

Revenue Boardings by Month

Rolling Five Year Count - 2010 to 2015

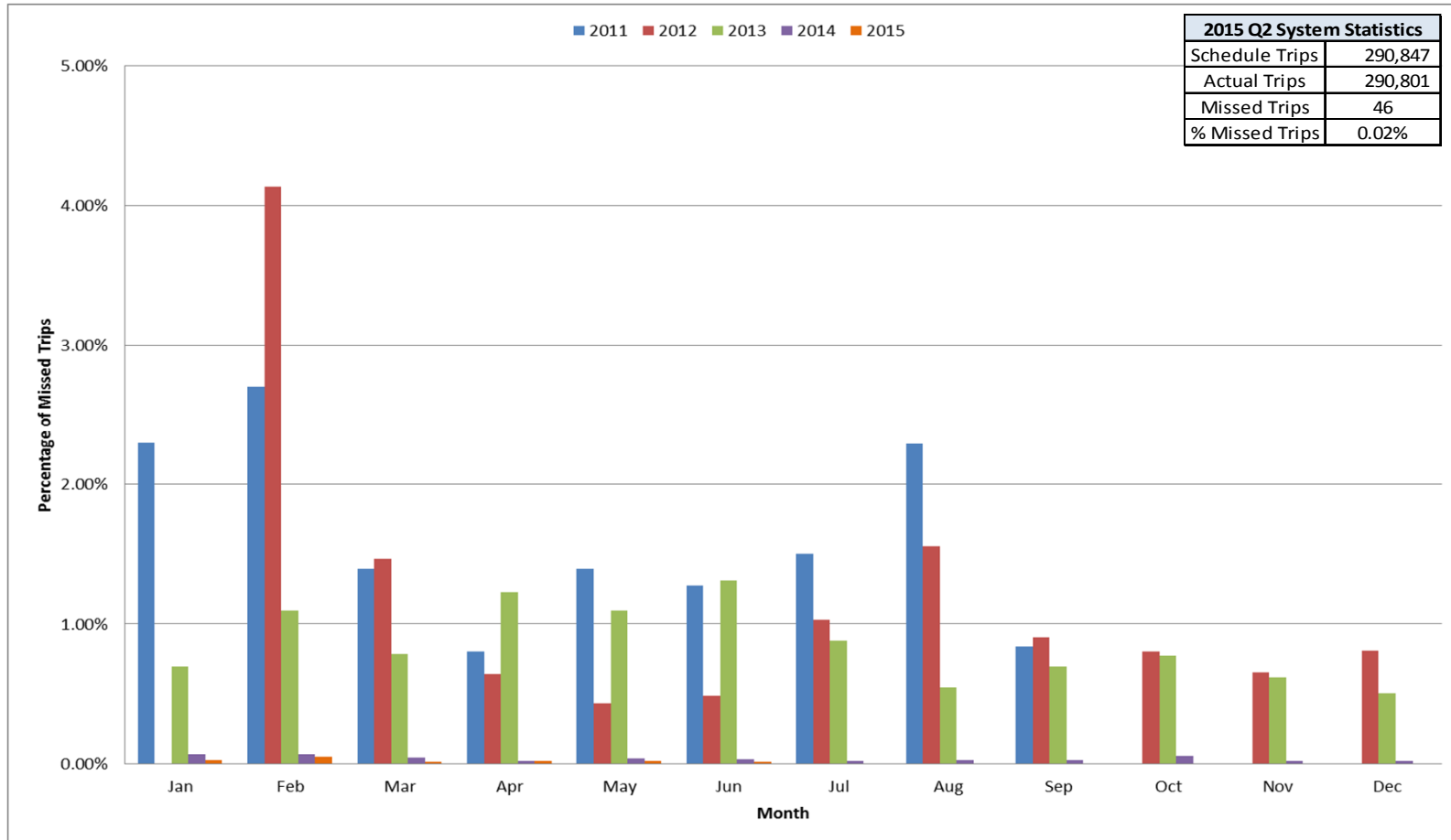


- Notes:**
- Due to operator strike from Oct 24, 2011 to Feb 3, 2012, monthly ridership numbers from Nov 2011 to Jan 2012 are based on Veolia Transportation (SW Division), TTC, and Dial-a-Ride services
 - * Forecasted revenue ridership due to free transit service, offered February and March 2012

System-Wide Percentage Missed Trips by Month

2011-2015

Jun-2015

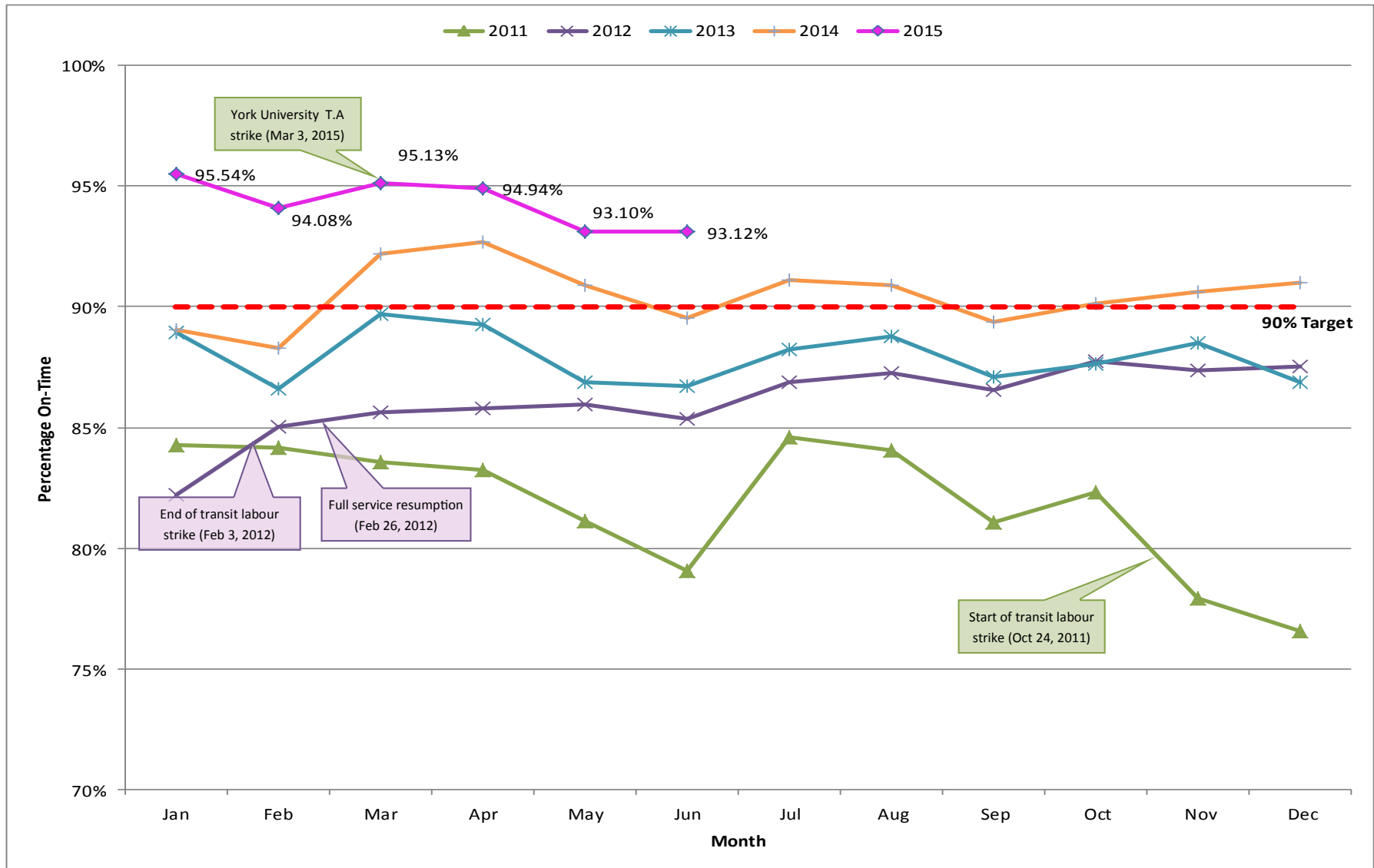


Notes:

- Missed trips from October 2011 to January 2012 are excluded due to the bus operator strike

On-Time Performance Conventional - Trip Start

Conventional Transit Routes - 2010 to 2015

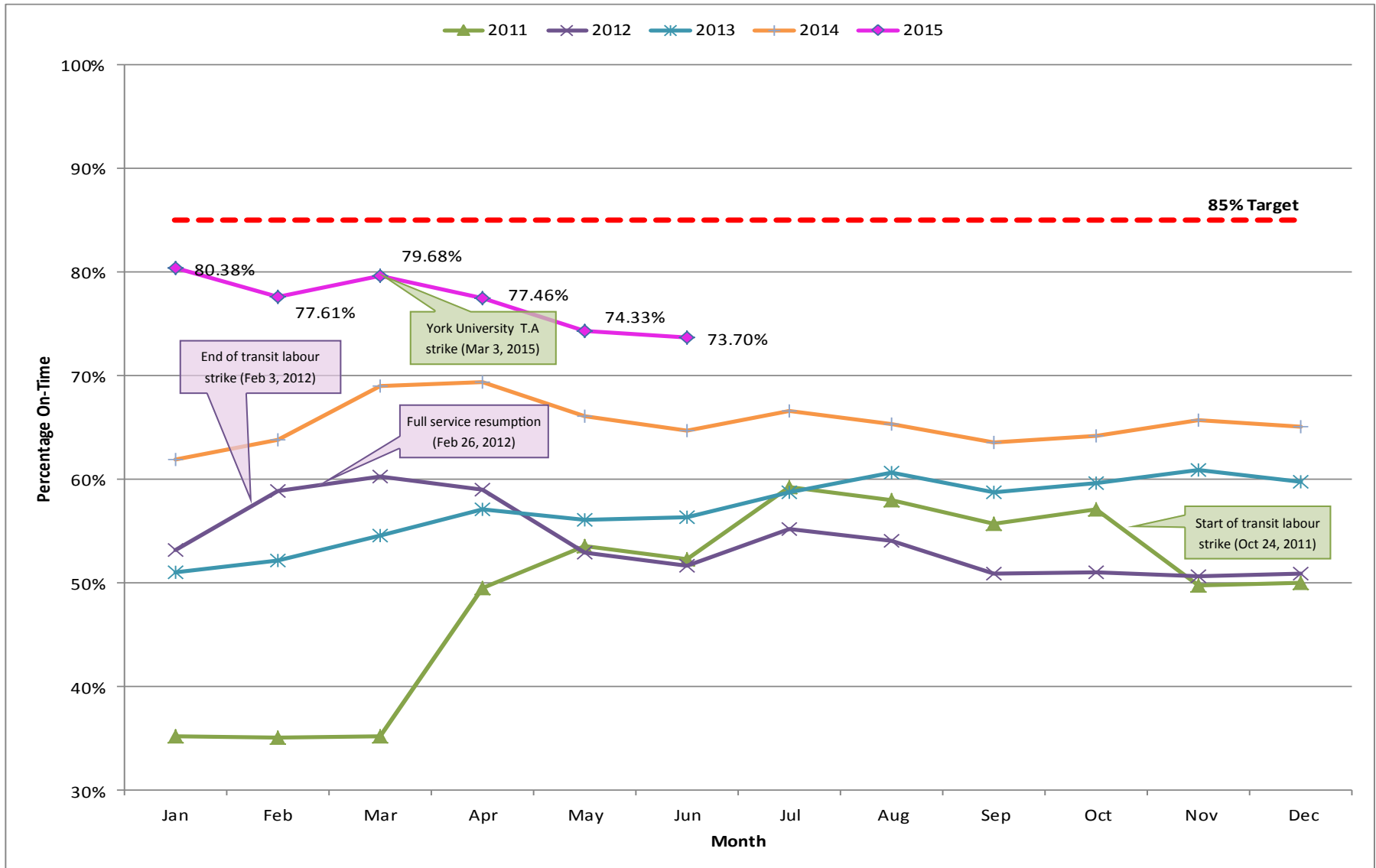


Notes:

- On-Time Performance from October 24, 2011 to February 3, 2012 only includes Veolia Transportation Services (SW Division) due to operator strike
- Jan 2015 five stop logic used

On-Time Performance Conventional - Trip Arrival

Conventional Transit Routes - 2010 to 2015

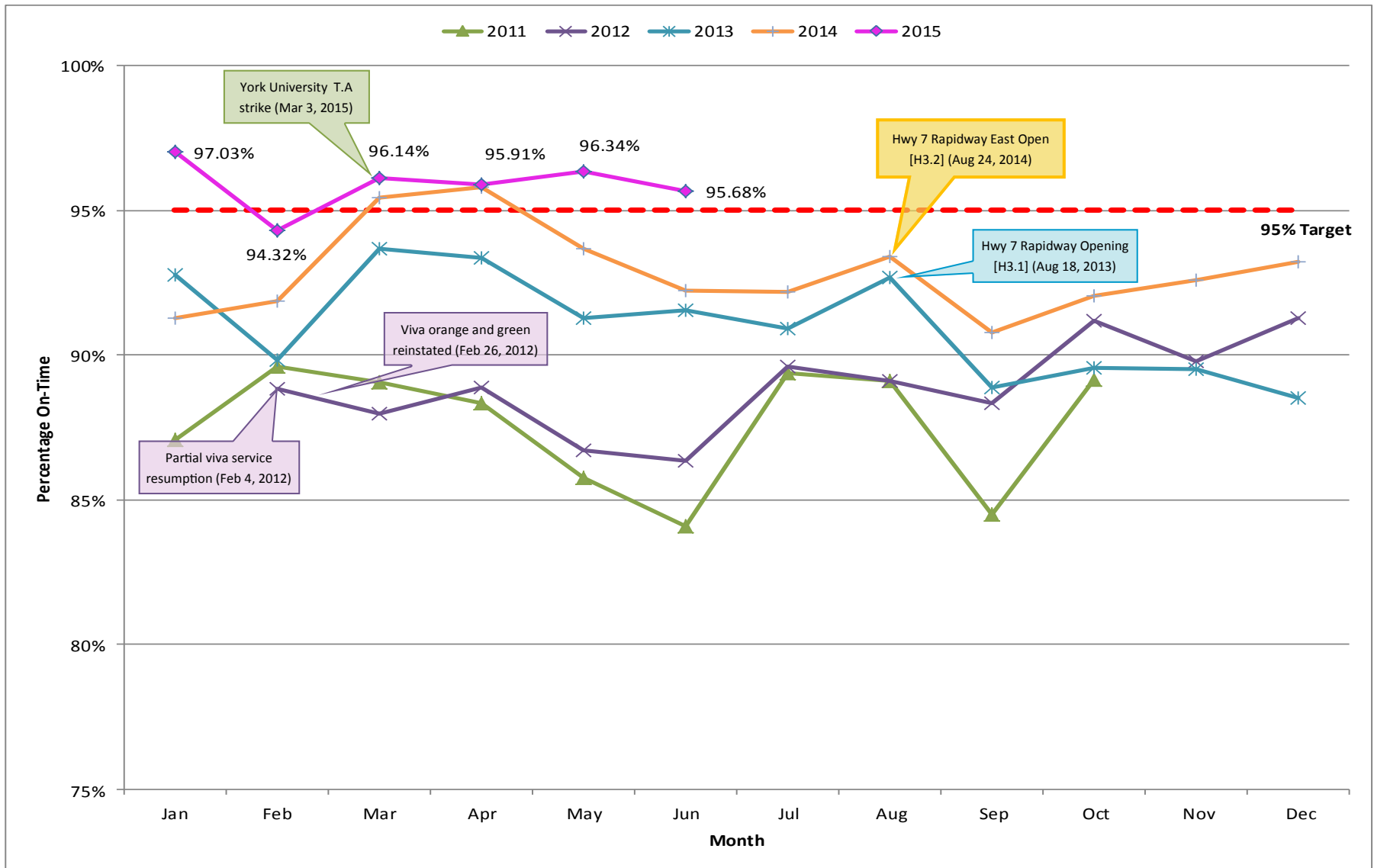


Notes:

- On-Time Performance from October 24, 2011 to February 3, 2012 only includes Veolia Transportation Services (SW Division) due to operator strike
- Jan 2015 five Stop logic

On-Time Performance York BRT (Viva) - Trip Start

Rapid Transit Routes - 2010 to 2015

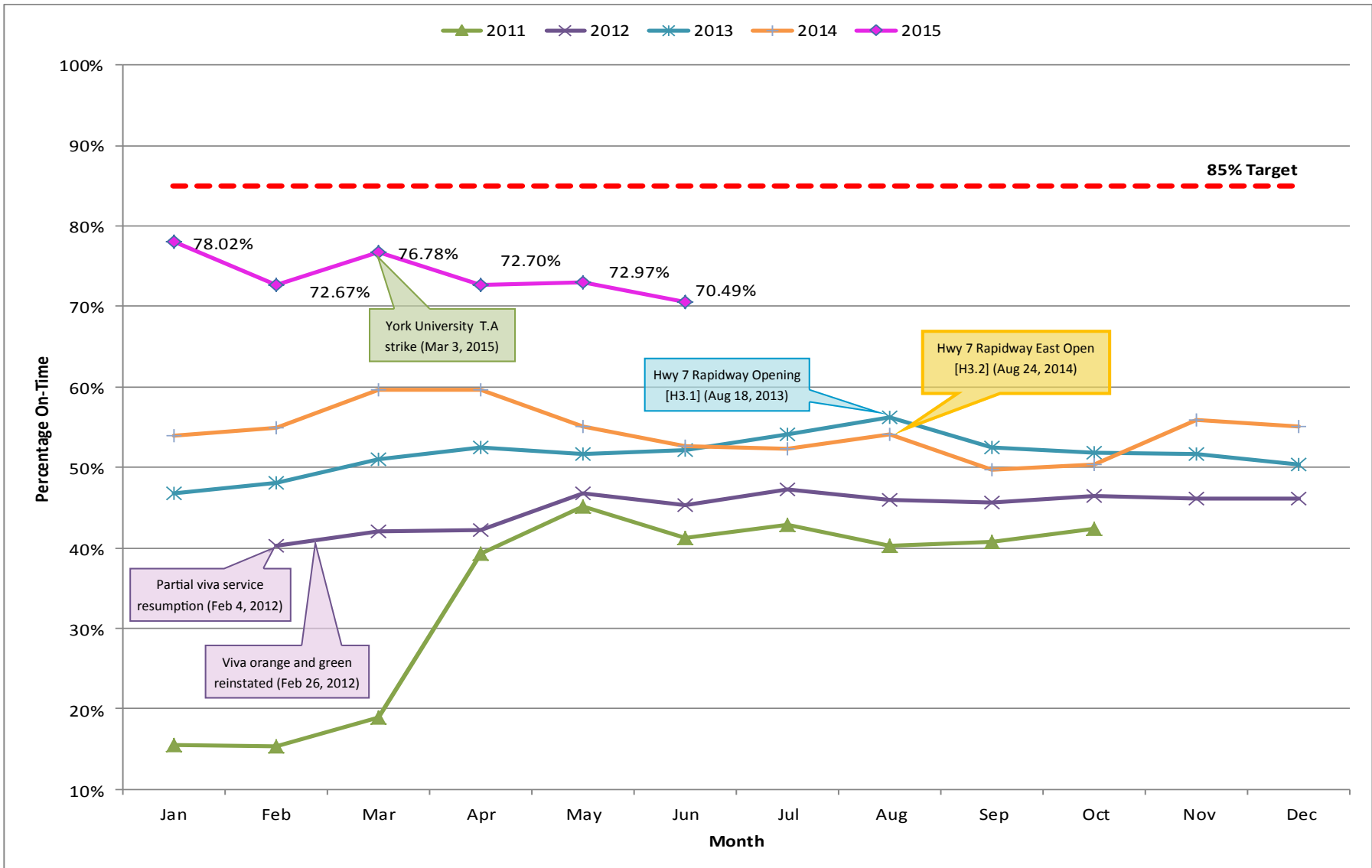


Notes:

- On-Time Performance from October 24, 2011 to February 3, 2012 not available for York BRT Services LP due to operator strike
- All York BRT Services LP resumed on February 26, 2012
- Jan 2015 five Stop logic

On-Time Performance York BRT (Viva) - Trip Arrival

Rapid Transit Routes - 2010 to 2015



Notes:

- On-Time Performance from October 24, 2011 to February 3, 2012 not available for York BRT Services LP due to operator strike
- All York BRT Services LP resumed on February 26, 2012
- Jan 2015 five stop logic