



**Good Government
Economic Vitality
Sustainable Environment**
Overview of Corporate Services

Committee of the Whole

Dino Basso

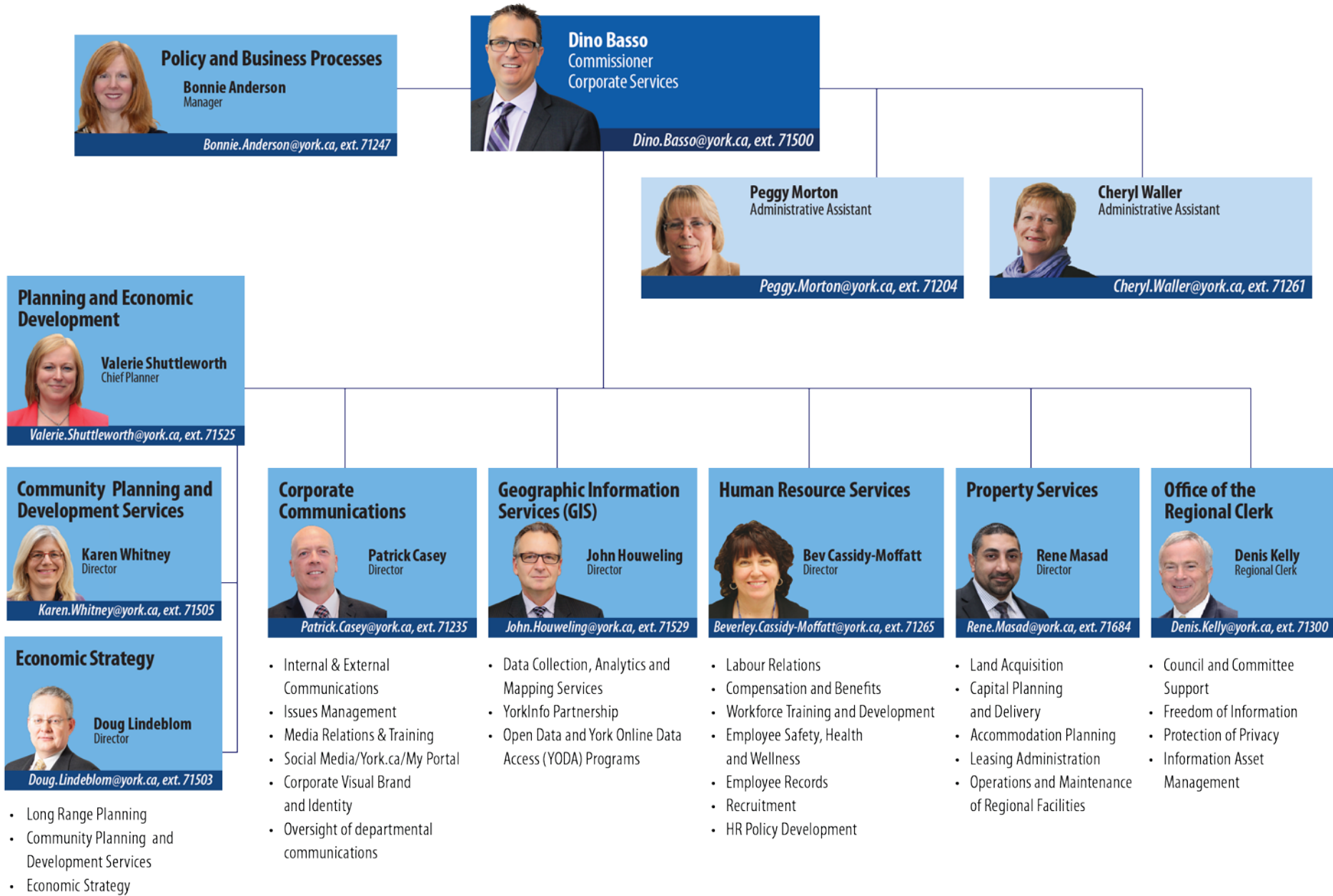
January 15, 2015


York Region

Presentation Summary

1. Overview of Corporate Services Departmental Structure
2. Departmental Areas of Focus
3. Report Outlook to Council
4. Essential Partnerships & Alliances

Department Structure



Policy and Business Processes

Bonnie Anderson
Manager

Bonnie.Anderson@york.ca, ext. 71247



Dino Basso
Commissioner
Corporate Services

Dino.Basso@york.ca, ext. 71500



Peggy Morton
Administrative Assistant

Peggy.Morton@york.ca, ext. 71204



Cheryl Waller
Administrative Assistant

Cheryl.Waller@york.ca, ext. 71261

Planning and Economic Development



Valerie Shuttleworth
Chief Planner

Valerie.Shuttleworth@york.ca, ext. 71525

Community Planning and Development Services



Karen Whitney
Director

Karen.Whitney@york.ca, ext. 71505

Economic Strategy



Doug Lindeblom
Director

Doug.Lindeblom@york.ca, ext. 71503

- Long Range Planning
- Community Planning and Development Services
- Economic Strategy

Corporate Communications



Patrick Casey
Director

Patrick.Casey@york.ca, ext. 71235

- Internal & External Communications
- Issues Management
- Media Relations & Training
- Social Media/York.ca/My Portal
- Corporate Visual Brand and Identity
- Oversight of departmental communications

Geographic Information Services (GIS)



John Houweling
Director

John.Houweling@york.ca, ext. 71529

- Data Collection, Analytics and Mapping Services
- YorkInfo Partnership
- Open Data and York Online Data Access (YODA) Programs

Human Resource Services



Bev Cassidy-Moffatt
Director

Beverley.Cassidy-Moffatt@york.ca, ext. 71265

- Labour Relations
- Compensation and Benefits
- Workforce Training and Development
- Employee Safety, Health and Wellness
- Employee Records
- Recruitment
- HR Policy Development

Property Services



Rene Masad
Director

Rene.Masad@york.ca, ext. 71684

- Land Acquisition
- Capital Planning and Delivery
- Accommodation Planning
- Leasing Administration
- Operations and Maintenance of Regional Facilities

Office of the Regional Clerk



Denis Kelly
Regional Clerk

Denis.Kelly@york.ca, ext. 71300

- Council and Committee Support
- Freedom of Information
- Protection of Privacy
- Information Asset Management

Key Partners in Delivery of Regional Programs

PEOPLE



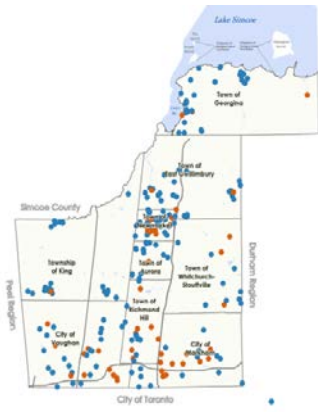
- Positive Workplace Culture
- Employee Health, Safety and Wellness
- Legislative Compliance

INFORMATION



- Data, analytics and mapping services
- Freedom of Information
- Protection of Privacy
- Securing and Managing Information Assets
- Media Relations & Public Outreach

PROPERTY



- Land Acquisition
- Capital Project Delivery
- Operations and Maintenance of Regional Facilities

PLANNING & ECONOMIC DEVELOPMENT



- Planning for and Managing Growth
- Updating and Implementation of Regional Official Plan
- Local Official Plan Review and Approvals
- Planning & Engineering Review of Development Applications
- Business Retention, Growth and Attraction

Our work supports and enables front line service delivery

Report Outlook 2015-2018

Every Year	2015	2016, 2017, 2018
<ul style="list-style-type: none"> ▪ Land Acquisition ▪ Disposition of Land ▪ Lease Renewals ▪ Procurement and Contract Awards ▪ YorkInfo Partnership Annual Update ▪ Open Data Program Status 	<ul style="list-style-type: none"> ▪ Land Acquisitions for VIVA: <ul style="list-style-type: none"> ○ Hwy 7 West (Centre Street & Bathurst) ○ Yonge Street (Hwy 7 to Major Mackenzie Drive and Levedale Road to Gamble Road/19th Avenue) ▪ Roads Land Acquisitions: <ul style="list-style-type: none"> ○ Hwy 7 (Town Centre Blvd. Sciberras Rd.) ○ Bathurst Street – Hwy 7 & Rutherford ○ Keele Street – Steeles Avenue to Hwy 7 in Vaughan ▪ Environmental Services Projects: <ul style="list-style-type: none"> ○ West Vaughan Sewage Servicing ○ Newmarket West Yonge Elevated Tank and Yonge Watermain ○ Water Servicing–Richmond Hill Centre/Langstaff Gateway ▪ Software Maintenance, Data Subscriptions and Contract Renewals, including Esri Enterprise License Subscription and Award of Socio-demographic Data Subscription 	<ul style="list-style-type: none"> ▪ CUPE 905 (YRU) Bargaining Mandate (Contract expires March 31, 2016) ▪ CUPE 905 (LTC) Bargaining Mandate (Contract expires March 31, 2016) ▪ ONA Bargaining Mandate (Contract expires March 31, 2017) ▪ Acquisition of Land for Environmental Services, Roads, and EMS

Partnerships And Alliances



Key Partners

- Regional Departments & Staff
- CUPE YR 905 & LTC, ONA
- York Region Rapid Transit Corporation
- York Regional Police
- Media
- School Boards
- Conservation Authorities

Working with our Council, Local Municipalities, and Partners
is essential to program delivery