

## Memorandum

**To:** Committee of the Whole  
**From:** Daniel Kostopoulos, P.Eng.  
Commissioner, Transportation Services  
**Date:** January 8, 2015  
**Re:** October and November 2014 York Region Transit Ridership Statistics

---

This memorandum provides an overview of York Region Transit (YRT/Viva) ridership statistics for October and November 2014.

YRT/Viva's October revenue ridership was approximately 2.20 million, representing an increase of 71,000 revenue riders, or 3.3 per cent compared to October 2013. The November revenue ridership was approximately 1.98 million, representing a decrease of 90,000 revenue riders, or a decrease of 4.3 per cent compared to November 2013. The decrease in ridership in November is attributed to one less weekday in November when compared to the previous year as well as a major reduction in gas prices.

There were 22 weekdays, 4 Saturdays and 5 Sundays in both October 2014 and October 2013. In November 2014, there was one less weekday (22 weekdays in total) and one more Sunday (5 Sundays in total) when compared to November 2013.

### Weather

Total precipitation in October 2013<sup>[1]</sup> was 102.0 millimetres, compared to 95.5 millimetres in October 2014<sup>[1]</sup>. Total precipitation in November 2013<sup>[1]</sup> was 43.6 millimetres, compared to 50.6 millimetres in November 2014<sup>[1]</sup>.

The average temperature was 15.2 degrees Celsius in October 2013<sup>[1]</sup> and 14.7 degrees Celsius in October 2014<sup>[1]</sup>. The average temperature was 1.5 degrees Celsius in November 2013<sup>[1]</sup> and 1.7 degrees Celsius in November 2014<sup>[1]</sup>.

## Employment

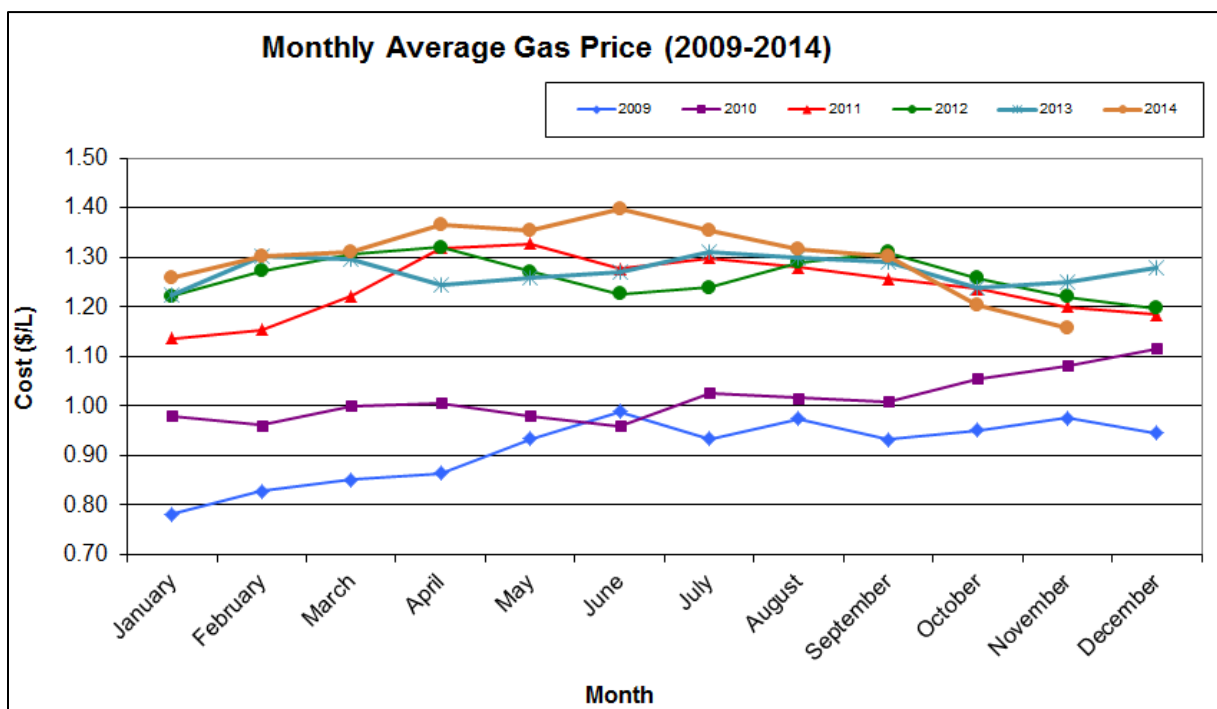
The national unemployment rate in October 2014<sup>[2]</sup> was 6.5 per cent, down 0.4 per cent from 6.9 per cent in October 2013<sup>[2]</sup>. York Region is located within the Employment Insurance Economic Region of Toronto which recorded an unemployment rate of 8.2 per cent in October 2014<sup>[3]</sup>, an increase of 0.3 per cent as compared to 7.9 per cent in October 2013<sup>[3]</sup>.

The national unemployment rate in November 2014<sup>[2]</sup> was 6.6 per cent, down 0.3 per cent from 6.9 per cent in November 2013<sup>[2]</sup>. York Region recorded an unemployment rate of 7.9 per cent in November 2014<sup>[3]</sup>, a decrease of 0.1 per cent as compared to 8 per cent in November 2013<sup>[3]</sup>.

## Gas Prices

Average gasoline prices decreased from \$1.24 per litre in October 2013<sup>[4]</sup> to \$1.21 per litre in October 2014<sup>[5]</sup>. Average gasoline prices decreased from \$1.25 per litre in November 2013<sup>[4]</sup> to \$1.16 per litre in November 2014<sup>[5]</sup>, a decrease of \$0.09 per litre. This information is reflected in **Figure 1** which depicts historical gasoline prices since 2009.

**Figure 1: Gas Prices between January 2009 and November 2014**



## Mobility Plus

Mobility Plus October 2014 ridership increased 2.5 per cent compared to October 2013. There were 1,823 additional rides, or approximately 87 additional trips per day, compared to October 2013.

This was due to additional ridership from the Maple Health Day Program.

Mobility Plus ridership increased 1.1 per cent compared to November 2013. There were 336 additional rides or approximately 17 additional trips per day compared with November 2013. The increase in November 2014 is a result of a change in times and location of dialysis appointments.

---

Daniel Kostopoulos, P.Eng.  
Commissioner of Transportation Services

### Notes:

[1] Historical Climate Data, Toronto Buttonville Airport, Ontario. Retrieved from <http://climate.weather.gc.ca/>. Retrieved date: December 9, 2014

[2] Labour Force Survey. November 2014, Statistics Canada. Retrieved from <http://www.statcan.gc.ca/daily-quotidien/141205/t141205a003-eng.htm>. Retrieved date: December 9, 2014

[3] EI Economic Region of Toronto – Unemployment Rates for the EI Economic Regions. *Human Resources and Skills Development Canada*. Retrieved from <http://srv129.services.gc.ca/rbin/eng/rates.aspx?id=2014#data>. Retrieved date: December 9, 2014

[4] Fuel Price Data. (2013). Ministry of Energy. Retrieved from <http://www.energy.gov.on.ca/en/fuel-prices/fuel-price-data/?fuel=req&yr=2013>. Retrieved date: December 9, 2014

[5] Fuel Price Data. (2014). Ministry of Energy. Retrieved from <http://www.energy.gov.on.ca/en/fuel-prices/fuel-price-data/?fuel=req&yr=2014>. Retrieved date: December 9, 2014

#5819324

**YORK REGION TRANSIT / VIVA - MONTHLY RIDERSHIP SUMMARY (Actual)**

October 2014

rev. 14nov2014

Oct-14	22 weekdays, 4 Saturdays, 5 Sunday/Holidays
Oct-13	22 weekdays, 4 Saturdays, 5 Sunday/Holidays

YRT Route #	Route Name	2013			TOTAL BOARDINGS (MONTH)			TOTAL BOARDINGS (YEAR TO DATE)			2014			Notes
		Avg Wkdy Boardings	Avg Sat Boardings	Avg Sn/Hol Boardings	2013	2014	Percentage ('14 vs '13)	2013	2014	Percentage ('14 vs '13)	Avg Wkdy Boardings	Avg Sat Boardings	Avg Sn/Hol Boardings	
1 <sup>[1]</sup>	Highway 7	1,953	688	429	48,045	44,526	-7.3%	464,134	427,967	-7.8%	1,778	803	412	Route restructured June 30, 2013; rapidway opening (Hwy 404 to Warden) August 24, 2014; Ridership migration to Viva purple/pink
2 <sup>[1]</sup>	Milliken	2,046	867	383	50,646	52,257	3.2%	462,352	470,886	1.8%	2,095	859	498	Stable ridership
3 <sup>[1]</sup>	Thornhill	2,021	430	335	48,103	49,624	3.2%	403,103	397,442	-1.4%	2,041	601	437	Stable ridership
8	Kennedy	1,668	665	389	41,546	41,554	0.0%	349,770	361,682	3.4%	1,630	737	517	Stable ridership
9 <sup>[1]</sup>	Ninth Line	311	-	-	6,899	6,883	-0.2%	60,758	60,795	0.1%	310	-	-	Stable ridership
14	14th Avenue	804	-	-	17,747	15,730	-11.4%	138,653	123,770	-10.7%	712	-	-	Route restructured June 30, 2013; Services to Markham Stouffville Hospital discontinued
15	Stouffville	-	-	-	-	921	-	4,702	-	-	37	14	8	New route implemented February 23, 2014
16	16th Avenue	1,597	911	567	41,800	43,913	5.1%	169,839	381,208	124.5%	1,658	970	683	Route implemented June 30, 2013; Stable ridership
18	Bur Oak	984	127	-	22,212	25,080	12.9%	170,584	175,114	2.7%	1,113	138	-	Increased demand to/from Bur Oak Secondary School
25	Major Mackenzie	708	-	-	15,630	16,403	4.9%	54,819	133,559	143.6%	743	-	-	Route implemented June 30, 2013; Stable ridership
40	Unionville Local	644	137	97	15,300	14,819	-3.1%	115,830	111,553	-3.7%	627	155	71	Stable ridership
41	Markham Local	278	81	42	6,696	6,620	-1.1%	65,077	59,373	-8.8%	272	87	50	Stable ridership
42	Berczy	138	-	-	3,054	2,120	-30.6%	26,718	23,997	-10.2%	96	-	-	Ridership migration to Route 204
45	Minqay	82	-	-	1,804	2,370	31.4%	14,938	16,292	9.1%	107	-	-	General growth
201	Markham GO Shuttle	79	-	-	1,743	2,181	25.1%	16,871	17,699	4.9%	99	-	-	Increased employment travel
202	Unionville GO Shuttle	146	-	-	3,217	2,975	-7.5%	27,668	27,656	0.0%	135	-	-	Decreased travel to GO Train station
203	Milliken GO Shuttle	90	-	-	1,993	1,212	-39.2%	16,178	12,320	-23.8%	55	-	-	Decreased travel to GO Train station
204	Berczy GO Shuttle	-	-	-	-	814	-	1,549	-	-	37	-	-	New route implemented August 30, 2014; Ridership migration from Route 42
300 <sup>[1]</sup>	Business Express	380	-	-	8,417	8,148	-3.2%	81,761	81,504	-0.3%	368	-	-	Stable ridership
301 <sup>[1]</sup>	Markham Express	215	-	-	4,761	4,059	-14.7%	39,050	38,233	-2.1%	184	-	-	Decreased employment travel
302 <sup>[1]</sup>	Unionville Express	212	-	-	4,691	4,502	-4.0%	44,437	44,637	0.5%	203	-	-	Stable ridership
303 <sup>[1]</sup>	Bur Oak Express	490	-	-	10,855	9,778	-9.9%	79,693	92,780	16.4%	443	-	-	Decreased employment travel
304 <sup>[1]</sup>	Mount Joy Express	292	-	-	6,461	6,516	0.9%	63,174	61,093	-3.3%	295	-	-	Stable ridership
522	Markham Community Bus	74	89	-	2,001	2,076	3.7%	17,711	19,073	7.7%	79	83	-	Increased ridership as a result of increased number of trips to/from 2 Raymerville Drive effective September 2013
TTC	Markham Total	15,212	3,995	2,242	363,621	365,081	0.4%	2,883,118	3,144,884	9.1%	15,117	4,447	2,676	
TTC 17A <sup>[1]</sup>	Birchmount	175	-	-	3,850	3,608	-6.3%	40,733	41,170	1.1%	164	-	-	Decreased employment travel
TTC 24D, 224B/C/D <sup>[1]</sup>	Vic Park North (Woodbine)	1,123	103	71	25,481	25,965	1.9%	233,024	228,497	-1.9%	1,140	117	82	Stable ridership
TTC 68B <sup>[1]</sup>	Warden North	1,018	347	253	25,049	24,718	-1.3%	217,873	220,858	1.4%	981	429	284	Stable ridership
TTC 102D <sup>[1]</sup>	Markham Rd	1,156	408	362	28,874	29,371	1.7%	233,401	251,248	7.6%	1,173	555	269	Stable ridership
TTC 129A <sup>[1]</sup>	McCowan North	2,733	1,396	1,012	70,770	68,613	-3.0%	639,963	614,145	-4.0%	2,634	1,445	977	Stable ridership
	TTC (Markham) Total	6,205	2,254	1,698	154,024	152,275	-1.1%	1,364,994	1,355,918	-0.7%	6,092	2,546	1,612	
	<b>Markham &amp; TTC Total</b>	<b>21,417</b>	<b>6,249</b>	<b>3,940</b>	<b>517,645</b>	<b>517,356</b>	<b>-0.1%</b>	<b>4,248,112</b>	<b>4,500,802</b>	<b>5.9%</b>	<b>21,209</b>	<b>6,993</b>	<b>4,288</b>	
4/4A <sup>[1]</sup>	Major Mackenzie	3,722	1,771	1,490	97,008	93,787	-3.3%	979,792	862,262	-12.0%	3,526	2,220	1,403	Stable ridership
5 <sup>[1]</sup>	Clark	1,554	434	-	36,165	35,829	-0.9%	340,221	322,033	-5.3%	1,525	536	-	Stable ridership
7 <sup>[1]</sup>	Martin Grove	1,261	257	-	29,066	28,304	-2.6%	220,218	214,817	-2.5%	1,247	171	-	Stable ridership
10 <sup>[1]</sup>	Woodbridge	391	113	74	9,476	8,876	-6.3%	86,537	76,566	-11.5%	397	9	14	Route restructured July 2012; Saturday and Sunday ridership migrate to TTC 165 - Weston Road North
12	Pine Valley	513	195	-	12,178	11,932	-2.0%	110,397	107,050	-3.0%	508	174	-	Stable ridership
13	Islington	566	127	-	13,139	12,884	-1.9%	108,005	104,887	-2.9%	554	145	-	Stable ridership
20/20A <sup>[1]</sup>	Jane	3,360	2,624	1,561	93,448	98,611	5.5%	821,169	881,074	7.3%	3,760	2,053	1,370	Stable ridership; Route 20A implemented September 2014
21	Vellore Local	167	-	-	3,695	5,236	41.7%	9,793	37,824	286.2%	237	-	-	Route implemented June 30, 2013
22/22A <sup>[1]</sup>	King City	2,055	68	-	45,732	50,761	11.0%	263,964	371,815	40.9%	2,283	79	-	Ridership migration from TTC Route 107F; improved weekday frequency in September 2013; Increased travel to York University
23 <sup>[1]</sup>	Thornhill Woods	816	-	-	18,097	17,579	-2.9%	165,657	148,316	-10.5%	796	-	-	Stable ridership
26	Maple Local	399	83	70	9,566	12,405	29.7%	34,072	109,681	221.9%	523	114	81	Route implemented June 30, 2013; Ridership migration from Route 4/4A and Route 360; One additional AM trip in September 2013
28	Huntington	46	-	-	1,024	905	-11.6%	12,194	9,646	-20.9%	41	-	-	Route restructured July 2014; Service extended to Huntington Road area
61	King Local	22	-	-	484	265	-45.2%	4,209	2,751	-34.6%	12	-	-	Decreased employment travel
77/77A <sup>[1]</sup>	Highway 7	4,804	2,420	1,075	121,657	131,595	8.2%	1,081,419	1,124,132	3.9%	5,284	2,234	1,162	Route travels through vivaNext construction zone; Route 77A branch service introduced on July 14, 2014
99 (incl. 98E, 98/99) <sup>[1]</sup>	Yonge	2,663	1,585	866	69,699	63,724	-8.6%	677,606	601,632	-11.2%	2,328	1,555	1,206	General corridor decrease
360 <sup>[1]</sup>	Vaughan Express	271	-	-	6,245	6,000	-3.9%	62,448	52,035	-16.7%	271	-	-	Stable Ridership
760	Vaughan Mills/Wonderland	-	218	228	2,050	2,962	44.5%	21,346	34,662	62.4%	-	348	310	General growth; Increased ridership to Vaughan Mills Mall
TTC	Vaughan Total	22,610	9,895	5,364	568,729	581,655	2.3%	4,999,047	5,061,183	1.2%	23,292	9,638	5,546	
TTC 35D <sup>[1]</sup>	Jane	1,019	-	-	22,418	21,626	-3.5%	266,787	195,642	-26.7%	983	-	-	Non-rush hour and Saturday service discontinued June 23, 2013; Ridership migration to Route 20
TTC 37D <sup>[1]</sup>	Islington	-	-	-	-	-	-	18,704	-	-	-	-	-	Route discontinued June 23, 2013
TTC 105/105-B <sup>[1]</sup>	Dufferin North	2,209	738	767	55,385	52,079	-6.0%	502,727	502,072	-0.1%	2,075	796	649	General corridor decrease
TTC 107C/D/B/F <sup>[1]</sup>	Keele North	2,955	710	399	69,845	63,650	-8.9%	649,468	579,570	-10.8%	2,619	853	524	Route 107F branch discontinued June 23, 2013; Ridership migration to Route 22/22A
TTC 160 <sup>[1]</sup>	Bathurst North	729	340	273	18,763	18,091	-3.6%	197,233	181,249	-8.1%	694	392	251	Stable ridership
TTC 165D/F <sup>[1]</sup>	Weston Road North	1,989	1,012	683	51,221	47,125	-8.0%	430,982	426,132	-1.1%	1,815	1,120	543	Stable ridership
	TTC (Vaughan) Total	8,901	2,800	2,122	217,632	202,571	-6.9%	2,065,901	1,884,665	-8.8%	8,186	3,161	1,967	
	<b>Vaughan &amp; TTC Total</b>	<b>31,511</b>	<b>12,695</b>	<b>7,486</b>	<b>786,361</b>	<b>784,226</b>	<b>-0.3%</b>	<b>7,064,948</b>	<b>6,945,848</b>	<b>-1.7%</b>	<b>31,478</b>	<b>12,799</b>	<b>7,513</b>	

\* Route crosses municipal boundaries.

YRT Route #	Route Name	2013			TOTAL BOARDINGS (MONTH)			TOTAL BOARDINGS (YEAR TO DATE)			2014			
		Avg Wkdy Boardings	Avg Sat Boardings	Avg Sn/Hol Boardings	2013	2014	Percentage ('14 vs '13)	2013	2014	Percentage ('14 vs '13)	Avg Wkdy Boardings	Avg Sat Boardings	Avg Sn/Hol Boardings	
80	Elgin Mills	491	252	151	12,608	15,105	19.8%	54,400	134,899	148.0%	607	229	159	Implemented June 30, 2013 due to Route 90 restructuring; Stable ridership
81	Inspiration	259	-	-	5,711	5,422	-5.1%	40,482	40,960	1.2%	246	-	-	Stable ridership
82	Valleymede	492	-	-	10,849	9,546	-12.0%	77,137	68,144	-11.7%	433	-	-	Route restructured June 2013 and converted to rush hour service only
83/83A	Trench	1,146	-	-	25,275	29,547	16.9%	192,311	192,377	0.0%	1,341	-	-	General increase
84	Oak Ridges	214	21	-	4,806	4,544	-5.5%	33,643	35,520	5.6%	203	18	-	Stable ridership
85/85C <sup>[1]</sup>	Rutherford	3,690	1,788	1,214	94,917	90,367	-4.8%	1,031,129	828,444	-19.7%	3,453	1,933	1,270	Route restructured June 30, 2013; Stable ridership
86	Newkirk-Red Maple	1,058	230	-	24,266	23,816	-1.9%	183,357	194,792	6.2%	1,037	242	-	Stable ridership
87 <sup>[1]</sup>	Autumn Hill	613	-	-	13,529	12,062	-10.8%	145,973	92,227	-36.8%	547	-	-	Route restructured June 30, 2013
88/88A <sup>[1]</sup>	Bathurst	4,748	2,573	1,568	123,511	132,338	7.1%	1,055,346	1,102,411	4.5%	5,113	2,299	2,027	Ridership migration from Route 23; General growth
589/590	RH Community Bus	160	94	56	4,184	4,004	-4.3%	41,914	38,944	-7.1%	148	115	56	Stable ridership
90/90B <sup>[1]</sup>	Leslie	3,610	1,034	515	86,529	88,347	2.1%	845,294	734,259	-13.1%	3,655	1,004	706	Route restructured June 30, 2013; Stable ridership
91/91A/91B/91E <sup>[1]</sup>	Bayview/Express	4,435	1,688	920	109,391	110,163	0.7%	983,427	943,130	-4.1%	4,418	1,722	1,118	Stable ridership
240	Mill Pond GO Shuttle	99	-	-	2,190	2,425	10.7%	23,228	22,456	-3.3%	110	-	-	Increased travel to GO Train station
241	Bev. Acres GO Shuttle	58	-	-	1,279	1,232	-3.7%	16,369	13,205	-19.3%	56	-	-	Stable ridership
242	N. Richvale GO Shuttle	35	-	-	772	639	-17.2%	7,435	6,384	-14.1%	29	-	-	Decreased travel to GO Train station
243	Redstone GO Shuttle	152	-	-	3,351	3,765	12.4%	38,152	36,333	-4.8%	171	-	-	Stable ridership
244	Beaver Creek Shuttle	54	-	-	1,192	1,326	11.2%	3,771	11,005	191.8%	60	-	-	General growth
<b>Richmond Hill Total</b>		<b>21,314</b>	<b>7,680</b>	<b>4,424</b>	<b>524,360</b>	<b>534,648</b>	<b>2.0%</b>	<b>4,773,368</b>	<b>4,495,490</b>	<b>-5.8%</b>	<b>21,627</b>	<b>7,562</b>	<b>5,336</b>	
<b>Aurora</b>														
31 <sup>[1]</sup>	Aurora North	110	-	-	2,434	2,381	-2.2%	19,894	18,283	-8.1%	108	-	-	Stable ridership
32	Aurora South	591	21	-	13,170	12,628	-4.1%	98,014	92,641	-5.5%	568	23	-	Last southbound trip discontinued in Feb 2014 due to low ridership; Stable ridership
33/33A	Wellington	570	113	-	13,085	13,094	0.1%	103,340	103,189	-0.1%	566	147	-	Stable ridership
<b>Aurora Total</b>		<b>1,271</b>	<b>134</b>	<b>-</b>	<b>28,689</b>	<b>28,103</b>	<b>-2.0%</b>	<b>221,248</b>	<b>214,113</b>	<b>-3.2%</b>	<b>1,242</b>	<b>170</b>	<b>-</b>	
<b>Newmarket, East Gwill., Georgina</b>														
44	Bristol	294	70	-	6,800	7,190	5.7%	58,042	56,919	-1.9%	310	86	-	Stable ridership
50/50B	Queensway	1,205	636	456	31,942	30,578	-4.3%	287,854	277,921	-3.5%	1,125	768	463	Stable ridership; vivaNext construction occurring along Davis Drive
51	Keswick Local	222	39	-	5,073	5,050	-0.5%	37,251	39,153	5.1%	222	34	-	Stable ridership
52 <sup>[1]</sup>	Holland Landing	259	112	-	6,197	6,230	0.5%	58,889	52,630	-10.6%	262	108	-	Stable ridership
54 <sup>[1]</sup>	Bayview	489	132	-	11,367	11,356	-0.1%	94,288	91,433	-3.0%	485	157	-	Stable ridership
55/55B	Davis Drive	1,096	503	278	27,765	26,293	-5.3%	262,999	247,240	-6.0%	1,030	549	264	vivaNext construction occurring along Davis Drive; Route travels through construction zone
56	Gorham-Eagle	502	193	139	12,593	12,682	0.7%	114,317	113,046	-1.1%	504	226	130	Stable ridership
57/57A	Mulock	1,089	394	188	26,681	26,413	-1.0%	212,412	215,576	1.5%	1,088	359	193	Stable ridership
58	Mount Albert	124	-	-	2,753	2,909	5.7%	25,677	26,751	4.2%	130	9	-	Stable ridership, Saturday dial-a-ride service added April 2014
59	The ROC	-	-	-	-	-	-	646	-	-	-	-	-	Route discontinued March 2013
98 <sup>[1]</sup>	Yonge	858	413	300	22,162	20,112	-9.3%	207,961	174,271	-16.2%	750	481	326	General corridor decrease
222	Aurora-Nwmkt GO Shuttle	51	-	-	1,127	1,498	32.9%	10,709	10,723	0.1%	68	-	-	Increased travel to GO Train station
223	Newmarket GO Shuttle	20	-	-	443	464	4.7%	3,579	3,842	7.3%	21	-	-	Stable ridership
520/521	Newmarket Community Bus	92	23	14	2,199	2,272	3.3%	19,381	19,624	1.3%	94	24	20	Stable ridership
<b>Newmarket Total</b>		<b>6,301</b>	<b>2,515</b>	<b>1,375</b>	<b>157,102</b>	<b>153,047</b>	<b>-2.6%</b>	<b>1,394,005</b>	<b>1,329,129</b>	<b>-4.7%</b>	<b>6,088</b>	<b>2,801</b>	<b>1,396</b>	
<b>YRT SUB-TOTAL</b>		<b>81,814</b>	<b>29,273</b>	<b>17,225</b>	<b>2,014,157</b>	<b>2,017,380</b>	<b>0.2%</b>	<b>17,701,681</b>	<b>17,485,382</b>	<b>-1.2%</b>	<b>81,644</b>	<b>30,325</b>	<b>18,533</b>	
<b>Viva</b>														
blue (incl. blue'A) <sup>[1]</sup>	Yonge Corridor	19,294	12,202	8,608	530,344	536,554	1.2%	5,095,621	4,910,903	-3.6%	19,774	13,337	9,329	Stable ridership
purple <sup>[1]</sup>	Highway 7 Corridor	8,960	4,655	3,458	242,520	237,402	-2.1%	1,970,915	2,013,060	2.1%	9,062	4,824	3,433	Stable ridership; rapidway opening (Bayview to Hwy 404) August 18, 2013, rapidway opening (Hwy 404 to Warden) August 24, 2014
green <sup>[1]</sup>	Markham North-South Link	729	-	-	16,127	14,271	-11.5%	150,462	136,995	-9.0%	644	-	-	General corridor decrease
orange (incl. Zum) <sup>[1]</sup>	Vaughan North-South Link	2,832	813	563	68,412	59,215	-13.4%	637,332	511,288	-19.8%	2,489	577	402	Route restructured June 30, 2013; Service to Downsview Subway Station during non-rush hours discontinued
pink <sup>[1]</sup>	Finch - Unionville	2,434	-	-	53,748	52,271	-2.7%	452,867	488,180	7.8%	2,372	-	-	Rapidway opening (Bayview to Hwy 404) August 18, 2013, rapidway opening (Hwy 404 to Warden) August 24, 2014
<b>Viva SUB-TOTAL</b>		<b>34,249</b>	<b>17,670</b>	<b>12,629</b>	<b>911,151</b>	<b>899,713</b>	<b>-1.3%</b>	<b>8,307,197</b>	<b>8,060,426</b>	<b>-3.0%</b>	<b>34,341</b>	<b>18,738</b>	<b>13,164</b>	

[1] Route crosses municipal boundaries.

[2] Viva ridership data adjustment is derived on a monthly basis, and compensates for temporary malfunctions of on-board automatic passenger counter (APC) equipment, and/or for drivers not logging onto Init APC system.

<b>Tot. Boardings</b>	<b>YRT/VIVA SYSTEM TOTAL</b>	<b>116,063</b>	<b>46,943</b>	<b>29,854</b>	<b>2,925,308</b>	<b>2,917,093</b>	<b>-0.3%</b>	<b>26,008,878</b>	<b>25,545,808</b>	<b>-1.8%</b>	<b>115,985</b>	<b>49,063</b>	<b>31,697</b>
-----------------------	------------------------------	----------------	---------------	---------------	------------------	------------------	--------------	-------------------	-------------------	--------------	----------------	---------------	---------------

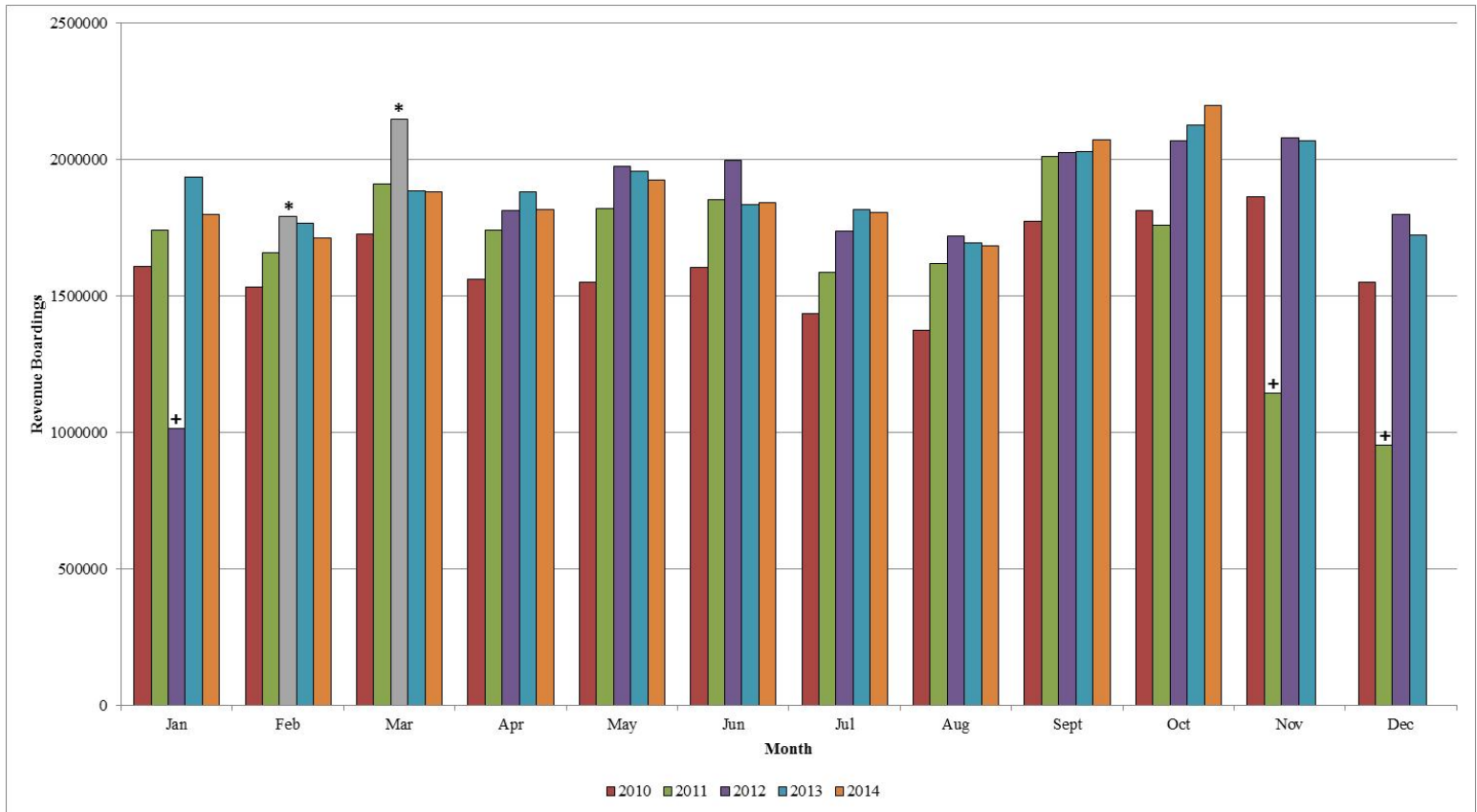
<b>Rev. Boardings</b>	<b>YRT/VIVA SYSTEM TOTAL</b>				<b>2,126,852</b>	<b>2,198,013</b>	<b>3.3%</b>	<b>18,917,936</b>	<b>18,731,117</b>	<b>-1.0%</b>	<b>87,394</b>		
-----------------------	------------------------------	--	--	--	------------------	------------------	-------------	-------------------	-------------------	--------------	---------------	--	--

Notes: 1. System-wide transfer rate = Revenue Boardings / Total Boardings **24.7%**

# YRT/Viva

## 2014 Revenue Ridership Summary (Actual)

Conventional and BRT services including contracted TTC services north of Steeles Avenue



\* February & March 2012 estimated revenue ridership due to free transit service.

+ Monthly ridership numbers from November 2011 to January 2012 are based on Veolia Transportation, TTC, and Dial-a-Ride services, due to operator strike from October 24, 2011 to February 3, 2012.

Month	2013	2014	Monthly Change ['14 vs '13]	Year to Date (YTD) Change	Average Weekday Revenue Ridership 2014
January	1,934,722	1,799,396	- 7.0%	- 7.0%	71,683
February	1,765,195	1,712,672	- 3.0%	- 5.1%	77,499
March	1,886,106	1,880,873	- 0.3%	- 3.5%	75,947
April	1,879,088	1,815,289	- 3.4%	- 3.4%	74,549
May	1,957,405	1,924,280	- 1.7%	- 3.1%	76,647
June	1,832,425	1,842,496	0.5%	- 2.5%	75,045
July	1,816,294	1,806,567	-0.5%	-2.2%	70,599
August	1,692,340	1,681,947	-0.6%	-2.0%	68,575
September	2,027,509	2,069,584	2.1%	-1.5%	85,592
October	2,126,852	2,198,013	3.3%	-1.0%	87,298
November	2,067,646				
December	1,724,030				
<b>YTD Total</b>	<b>22,709,612</b>	<b>18,731,117</b>			



YORK  
REGION  
TRANSIT

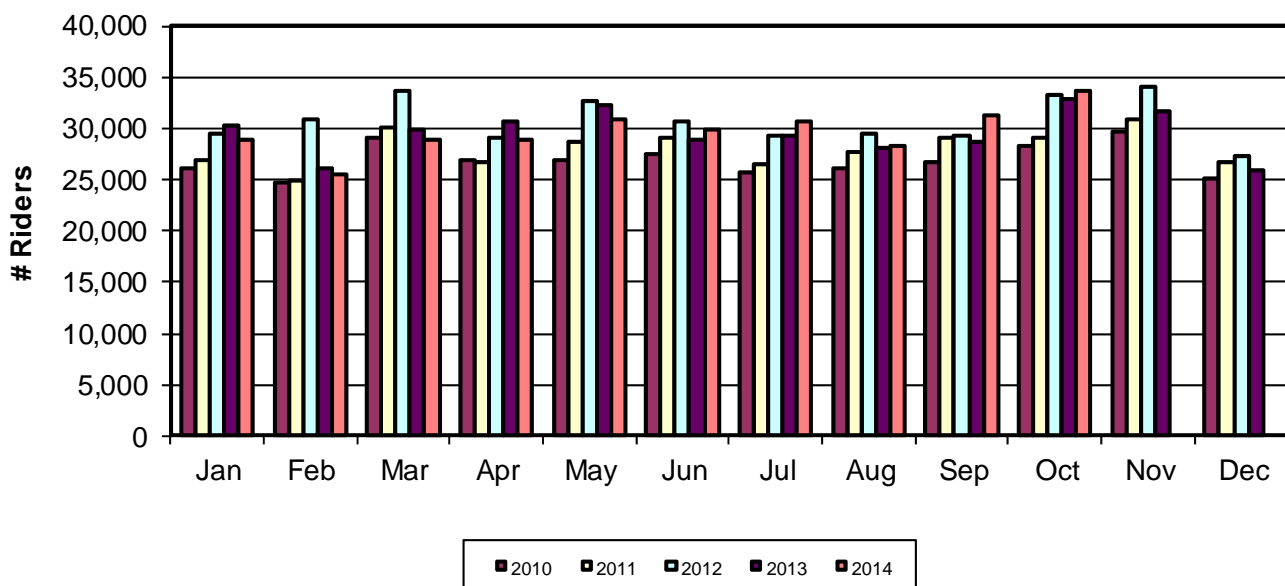


## YRT/Viva

# 2014 Ridership Summary (Actual)

Specialized Services – Mobility Plus

Five-Year Ridership by Month



Month	2013 Ridership	2014 Ridership	Monthly Change ('14 vs. '13)	Year to Date (YTD) Change	Average Weekday Revenue Ridership 2014
January	30,327	28,972	- 4.5%	- 4.5%	1,182
February	26,199	25,419	- 3.0%	- 3.8%	1,147
March	29,858	28,863	- 3.3%	- 3.6%	1,198
April	30,708	28,915	- 5.8%	- 4.2%	1,219
May	32,308	30,811	- 4.6%	- 4.3%	1,285
June	28,984	29,859	- 3.1%	- 3.1%	1,246
July	29,357	30,749	4.7%	-2.0%	1,234
August	28,111	28,316	0.7%	-1.7%	1,189
September	28,689	31,318	9.2%	- 0.5%	1,313
October	32,847	33,679	2.5%	-0.2%	1,356
November	31,636				
December	25,998				
<b>YTD</b>	<b>355,022</b>	<b>296,901</b>			

**YORK REGION TRANSIT / VIVA - MONTHLY RIDERSHIP SUMMARY (Actual)**

November 2014

rev. 15Dec2014

Nov-14	20 weekdays, 5 Saturdays, 5 Sunday/Holidays
Nov-13	21 weekdays, 5 Saturdays, 4 Sunday/Holidays

YRT Route #	Route Name	2013			TOTAL BOARDINGS (MONTH)			TOTAL BOARDINGS (YEAR TO DATE)			2014			Notes
		Avg Wkdy Boardings	Avg Sat Boardings	Avg Sn/Hol Boardings	2013	2014	Percentage ('14 vs '13)	2013	2014	Percentage ('14 vs '13)	Avg Wkdy Boardings	Avg Sat Boardings	Avg Sn/Hol Boardings	
1 <sup>[1]</sup>	Highway 7	1,828	692	380	43,514	40,102	-7.8%	507,648	468,069	-7.8%	1,711	802	353	Rapidway opening (Bayview to Hwy 404) August 18, 2013; Ridership migration to Viva purple/pink
2 <sup>[1]</sup>	Milliken	2,065	820	436	49,433	48,994	-0.9%	511,785	519,880	1.6%	2,130	795	442	Stable ridership
3 <sup>[1]</sup>	Thornhill	2,127	762	352	50,109	43,384	-13.4%	453,212	440,826	-2.7%	1,953	428	407	General corridor decrease
8	Kennedy	1,553	633	372	37,447	35,813	-4.4%	387,217	397,495	2.7%	1,516	646	429	Stable ridership
9 <sup>[1]</sup>	Ninth Line	347	-	-	7,335	6,311	-14.0%	68,093	67,106	-1.4%	314	-	-	General corridor decrease
14	14th Avenue	741	-	-	15,602	12,960	-16.9%	154,255	136,730	-11.4%	646	-	-	Route restructured June 30, 2013; Services to Markham Stouffville Hospital discontinued
15	Stouffville	-	-	-	-	774	-	-	5,476	-	33	11	9	New route implemented February 23, 2014
16	16th Ave	1,570	930	616	40,261	38,112	-5.3%	210,100	419,320	99.6%	1,518	900	632	Route implemented June 30, 2013; Stable ridership
18	Bur Oak	1,001	124	-	21,715	22,300	2.7%	192,299	197,414	2.7%	1,081	128	-	Increased demand to/from Bur Oak Secondary School
25	Major Mackenzie	679	-	-	14,304	14,093	-1.5%	69,123	147,652	113.6%	703	-	-	Route implemented June 30, 2013; Stable ridership
40	Unionville Local	673	135	96	15,296	12,842	-16.0%	131,126	124,395	-5.1%	586	110	105	Decreased employment travel
41	Markham Local	280	87	47	6,566	6,347	-3.3%	71,643	65,720	-8.3%	282	64	71	Stable ridership
42	Berczy	152	-	-	3,209	2,005	-37.5%	29,927	26,002	-13.1%	100	-	-	Ridership migration to Route 204 - Berczy GO Shuttle
45	Minqay	100	-	-	2,114	2,307	9.1%	17,052	18,599	9.1%	115	-	-	General growth
201	Markham GO Shuttle	91	-	-	1,913	1,942	1.5%	18,784	19,641	4.6%	97	-	-	Stable ridership
202	Unionville GO Shuttle	152	-	-	3,196	2,663	-16.7%	30,864	30,319	-1.8%	133	-	-	Decreased travel to GO train station
203	Milliken GO Shuttle	74	-	-	1,554	1,061	-31.7%	17,732	13,381	-24.5%	53	-	-	Decreased travel to GO train station
204	Berczy GO Shuttle	-	-	-	-	662	-	-	2,211	-	33	-	-	New route implemented August 30, 2014; Ridership migration from Route 42 - Berczy
300 <sup>[1]</sup>	Business Express	404	-	-	8,546	7,846	-8.2%	90,307	89,350	-1.1%	390	-	-	Decreased employment travel
301 <sup>[1]</sup>	Markham Express	206	-	-	4,349	3,668	-15.7%	43,399	41,901	-3.5%	183	-	-	Decreased employment travel
302 <sup>[1]</sup>	Unionville Express	209	-	-	4,409	4,087	-7.3%	48,846	48,724	-0.2%	203	-	-	Decreased employment travel
303 <sup>[1]</sup>	Bur Oak Express	496	-	-	10,457	9,048	-13.5%	90,150	101,828	13.0%	451	-	-	Decreased employment travel
304 <sup>[1]</sup>	Mount Joy Express	287	-	-	6,063	6,101	0.6%	69,237	67,194	-3.0%	304	-	-	Stable ridership
522	Markham Community Bus	83	67	-	2,103	1,758	-16.4%	19,814	20,831	5.1%	75	51	-	Increased ridership as a result of increased number of trips to/from 2 Raymerville Drive effective September 2013
	Markham Total	15,118	4,250	2,299	349,495	325,180	-7.0%	3,232,613	3,470,064	7.3%	14,610	3,935	2,448	
TTC 17A <sup>[1]</sup>	Birchmount	175	-	-	3,675	3,280	-10.7%	44,408	44,450	0.1%	164	-	-	Decreased employment travel
TTC 24D, 224B/C/D <sup>[1]</sup>	Vic Park North (Woodbine)	1,123	104	83	24,441	23,801	-2.6%	257,465	252,298	-2.0%	1,140	118	80	Stable ridership
TTC 68B <sup>[1]</sup>	Warden North	1,018	347	253	24,125	23,185	-3.9%	241,998	244,043	0.8%	981	429	284	Stable ridership
TTC 102D <sup>[1]</sup>	Markham Rd	1,156	408	362	27,764	27,580	-0.7%	261,165	278,828	6.8%	1,173	555	269	Stable ridership
TTC 129A <sup>[1]</sup>	McCowan North	2,733	1,396	1,012	68,421	64,790	-5.3%	708,384	678,935	-4.2%	2,634	1,445	977	Stable ridership
	TTC (Markham) Total	6,205	2,255	1,710	148,426	142,636	-3.9%	1,513,420	1,498,554	-1.0%	6,092	2,547	1,610	
	Markham & TTC Total	21,323	6,505	4,009	497,921	467,816	-6.0%	4,746,033	4,968,618	4.7%	20,702	6,482	4,058	
4/4A <sup>[1]</sup>	Major Mackenzie	3,431	1,335	1,037	83,398	79,840	-4.3%	1,063,190	942,102	-11.4%	3,255	1,723	1,166	Ridership migration to Route 26 - Maple Local; Route restructured June 30, 2013
5 <sup>[1]</sup>	Clark	1,700	531	-	38,580	34,863	-9.6%	378,801	356,896	-5.8%	1,623	466	-	Stable ridership
7 <sup>[1]</sup>	Martin Grove	1,282	145	-	27,860	23,179	-16.8%	248,078	237,996	-4.1%	1,114	154	-	General corridor decrease
10 <sup>[1]</sup>	Woodbridge	429	89	103	9,924	8,262	-16.7%	96,461	84,828	-12.1%	382	42	73	Saturday and Sunday ridership migrate to TTC 165 - Weston Road North
12	Pine Valley	520	184	-	11,994	11,139	-7.1%	122,391	118,189	-3.4%	499	215	-	Stable ridership
13	Islington	558	115	-	12,431	11,354	-8.7%	120,436	116,241	-3.5%	512	202	-	Stable ridership
20 <sup>[1]</sup>	Jane	3,484	2,044	1,005	88,529	90,964	2.8%	909,698	972,038	6.9%	3,689	1,987	1,303	Stable ridership; Route 20A - Jane implemented September 2014
21	Vellore Local	188	-	-	3,970	4,424	11.4%	13,763	42,248	207.0%	220	-	-	Route implemented June 30, 2013
22/22A <sup>[1]</sup>	King City	1,880	82	-	40,128	44,773	11.6%	304,092	416,588	37.0%	2,203	104	-	Ridership migration from TTC Route 107F - Keele North; improved weekday frequency in September 2013; Increased travel to York University
23 <sup>[1]</sup>	Thornhill Woods	860	-	-	18,162	16,787	-7.6%	183,819	165,103	-10.2%	837	-	-	Stable ridership
26	Maple Local	469	87	94	10,732	11,917	11.0%	44,804	121,598	171.4%	543	114	90	Route implemented June 30, 2013; Ridership migration from Route 4/4A - Major Mackenzie and Route 360 - Vaughan Express; One additional AM trip in September 2013
28	Huntington	50	-	-	1,058	830	-21.6%	13,252	10,476	-20.9%	41	-	-	Route restructured July 2014; Service extended to Huntington Road area
61	King Local	20	-	-	423	164	-61.2%	4,632	2,915	-37.1%	8	-	-	Decreased employment travel to GO train station
77/77A <sup>[1]</sup>	Highway 7	4,587	2,081	1,177	112,362	117,930	5.0%	1,193,781	1,242,062	4.0%	5,036	1,983	1,367	Route travels through vivaNext construction zone; Route 77A - Highway 7 branch service introduced on July 14, 2014
99 (incl. 98E, 98/99) <sup>[1]</sup>	Yonge	2,408	1,063	1,115	60,697	59,037	-2.7%	738,303	660,669	-10.5%	2,241	1,668	1,169	Stable ridership
360 <sup>[1]</sup>	Vaughan Express	269	-	-	5,864	5,520	-5.9%	68,312	57,555	-15.7%	273	-	-	Stable ridership
760	Vaughan Mills/Wonderland	-	375	321	3,217	3,836	19.2%	24,563	38,498	56.7%	-	428	330	Seasonal service to Canada's Wonderland discontinued October 31, 2014; Increased ridership to Vaughan Mills Mall
	Vaughan Total	22,135	8,131	4,852	529,329	524,819	-0.9%	5,528,376	5,586,002	1.0%	22,476	9,086	5,498	
TTC 35D <sup>[1]</sup>	Jane	1,019	-	-	21,399	19,660	-8.1%	288,186	215,302	-25.3%	983	-	-	Non-rush hour and Saturday service discontinued June 23, 2013; Ridership migration to Route 20 - Jane
TTC 37D <sup>[1]</sup>	Islington	-	-	-	-	-	-	18,704	-	--	-	-	-	Route discontinued June 23, 2013
TTC 105/105-B <sup>[1]</sup>	Dufferin North	2,209	738	767	53,147	48,725	-8.3%	555,874	550,797	-0.9%	2,075	796	649	Stable ridership
TTC 107C/D/B/F <sup>[1]</sup>	Keele North	2,955	710	399	67,201	59,265	-11.8%	716,669	638,835	-10.9%	2,619	853	524	Route 107F - Keele North branch discontinued June 23, 2013; Ridership migration to Route 22/22A - King City
TTC 160 <sup>[1]</sup>	Bathurst North	729	340	273	18,101	17,095	-5.6%	215,334	198,344	-7.9%	694	392	251	Stable ridership
TTC 165D/F <sup>[1]</sup>	Weston Road North	1,989	1,012	683	49,561	44,615	-10.0%	480,543	470,747	-2.0%	1,815	1,120	543	Stable ridership
	TTC (Vaughan) Total	8,901	2,800	2,122	209,409	189,360	-9.6%	2,275,310	2,074,025	-8.8%	8,186	3,161	1,967	
	Vaughan & TTC Total	31,036	10,931	6,974	738,738	714,179	-3.3%	7,803,686	7,660,027	-1.8%	30,662	12,247	7,465	

\* Route crosses municipal boundaries.



	YRT Route #	Route Name	2013			TOTAL BOARDINGS (MONTH)			TOTAL BOARDINGS (YEAR TO DATE)			2014			
			Avg Wkdy Boardings	Avg Sat Boardings	Avg Sn/Hol Boardings	2013	2014	Percentage ('14 vs '13)	2013	2014	Percentage ('14 vs '13)	Avg Wkdy Boardings	Avg Sat Boardings	Avg Sn/Hol Boardings	
Richmond Hill	80	Elgin Mills	541	212	151	13,060	13,751	5.3%	67,460	148,650	120.4%	597	197	157	Implemented June 30, 2013 due to Route 90 - Leslie restructuring; Stable ridership
	81	Inspiration	249	-	-	5,237	4,993	-4.7%	45,719	45,953	0.5%	249	-	-	Stable ridership
	82	Valleymede	470	-	-	9,885	8,837	-10.6%	87,022	76,981	-11.5%	441	-	-	Route restructured June 2013 and converted to rush hour service only
	83/83A	Trench	1,155	-	-	24,314	25,840	6.3%	216,625	218,217	0.7%	1,290	-	-	General increase
	84	Oak Ridges	228	24	-	4,919	4,292	-12.7%	38,562	39,812	3.2%	212	10	-	Rush hour frequency reduction implemented April 2014
	85/85C <sup>[1]</sup>	Rutherford	3,342	1,732	971	83,214	86,915	4.4%	1,114,343	915,359	-17.9%	3,607	1,728	1,164	Route restructured June 30, 2013; Stable ridership
	86	Newkirk-Red Maple	1,040	245	-	23,128	22,203	-4.0%	206,485	216,995	5.1%	1,050	234	-	Stable ridership
	87 <sup>[1]</sup>	Autumn Hill	614	-	-	12,914	11,227	-13.1%	158,887	103,454	-34.9%	560	-	-	Route restructured June 30, 2013
	88/88A <sup>[1]</sup>	Bathurst	4,718	2,477	1,699	118,964	124,343	4.5%	1,174,310	1,226,754	4.5%	5,254	1,808	1,940	Ridership migration from Route 23; General growth
	589/590	RH Community Bus	266	80	92	6,364	4,525	-28.9%	48,278	43,469	-10.0%	178	100	92	Ridership overstated for Nov 2013.
	90/90B <sup>[1]</sup>	Leslie	3,595	927	553	82,663	79,477	-3.9%	927,957	813,736	-12.3%	3,561	955	638	Route restructured June 30, 2013; Stable ridership
	91/91A/91B/91E <sup>[1]</sup>	Bayview/Express	4,359	1,837	1,079	105,420	100,787	-4.4%	1,088,847	1,043,917	-4.1%	4,325	1,693	1,132	Stable ridership
	240	Mill Pond GO Shuttle	116	-	-	2,446	2,387	-2.4%	25,674	24,843	-3.2%	119	-	-	Stable ridership
	241	Bev. Acres GO Shuttle	68	-	-	1,428	1,321	-7.5%	17,797	14,526	-18.4%	66	-	-	Decreased travel to GO train station
242	N. Richvale GO Shuttle	32	-	-	673	582	-13.5%	8,108	6,966	-14.1%	29	-	-	Decreased travel to GO train station	
243	Redstone GO Shuttle	198	-	-	4,163	3,662	-12.0%	42,315	39,995	-5.5%	183	-	-	Decreased travel to GO train station	
244	Beaver Creek Shuttle	50	-	-	1,053	1,081	2.7%	4,824	12,086	150.5%	54	-	-	General growth	
		<b>Richmond Hill Total</b>	<b>21,041</b>	<b>7,534</b>	<b>4,545</b>	<b>499,845</b>	<b>496,223</b>	<b>-0.7%</b>	<b>5,273,213</b>	<b>4,991,713</b>	<b>-5.3%</b>	<b>21,775</b>	<b>6,725</b>	<b>5,123</b>	
Aurora	31 <sup>[1]</sup>	Aurora North	128	-	-	2,700	2,647	-2.0%	22,594	20,930	-7.4%	132	-	-	Stable ridership
	32	Aurora South	583	24	-	12,422	11,740	-5.5%	110,436	104,381	-5.5%	579	23	-	Last southbound trip discontinued in Feb 2014 due to low ridership; Stable ridership
	33/33A	Wellington	594	134	-	13,206	13,081	-0.9%	116,546	116,270	-0.2%	620	129	-	Stable ridership
		<b>Aurora Total</b>	<b>1,305</b>	<b>158</b>	<b>-</b>	<b>28,328</b>	<b>27,468</b>	<b>-3.0%</b>	<b>249,576</b>	<b>241,581</b>	<b>-3.2%</b>	<b>1,331</b>	<b>152</b>	<b>-</b>	
Newmarket, East Gwill., Georgina	44	Bristol	315	65	-	6,980	6,939	-0.6%	65,022	63,858	-1.8%	330	64	-	Stable ridership
	50/50B	Queensway	1,157	623	464	29,280	28,190	-3.7%	317,134	306,111	-3.5%	1,117	654	448	Stable ridership; vivaNext construction occurring along Davis Drive
	51	Keswick Local	230	31	-	5,042	4,854	-3.7%	42,293	44,007	4.1%	232	38	-	Stable ridership
	52 <sup>[1]</sup>	Holland Landing	259	123	-	6,085	5,406	-11.2%	64,974	58,036	-10.7%	240	111	-	Impact due to construction on 2nd Concession between Green Lane and Mount Albert Road and related detour
	54 <sup>[1]</sup>	Bayview	486	117	-	10,842	9,176	-15.4%	105,130	100,609	-4.3%	420	146	-	Schedule adjustments and reduced midday frequency implemented Nov 2014
	55/55B	Davis Drive	1,089	556	292	27,019	25,070	-7.2%	290,018	272,310	-6.1%	1,044	557	252	vivaNext construction occurring along Davis Drive; Route travels through construction zone
	56	Gorham-Eagle	502	217	149	12,280	11,797	-3.9%	126,597	124,843	-1.4%	492	247	138	Stable ridership
	57/57A	Mulock	1,060	364	244	25,232	24,859	-1.5%	237,644	240,435	1.2%	1,090	376	216	Stable ridership
	58	Mount Albert	119	-	-	2,513	2,859	13.8%	28,190	29,610	5.0%	140	10	-	Saturday DAR service added April 2014
	59	The ROC	-	-	-	-	-	-	646	-	--	-	-	-	Route discontinued March 2013
	98 <sup>[1]</sup>	Yonge	793	412	334	20,192	17,413	-13.8%	228,153	191,684	-16.0%	677	431	331	General corridor decrease
	222	Aurora-Nwmkt GO Shuttle	51	-	-	1,075	1,322	23.0%	11,784	12,045	2.2%	66	-	-	Increased travel to GO train station
	223	Newmarket GO Shuttle	20	-	-	422	420	-0.5%	4,001	4,262	6.5%	21	-	-	Stable ridership
520/521	Newmarket Community Bus	84	21	37	2,032	1,987	-2.2%	21,413	21,611	0.9%	86	30	22	Stable ridership	
		<b>Newmarket Total</b>	<b>6,165</b>	<b>2,529</b>	<b>1,520</b>	<b>148,994</b>	<b>140,293</b>	<b>-5.8%</b>	<b>1,542,999</b>	<b>1,469,422</b>	<b>-4.8%</b>	<b>5,954</b>	<b>2,664</b>	<b>1,407</b>	
		<b>YRT SUB-TOTAL</b>	<b>80,870</b>	<b>27,657</b>	<b>17,048</b>	<b>1,913,826</b>	<b>1,845,979</b>	<b>-3.5%</b>	<b>19,615,507</b>	<b>19,331,361</b>	<b>-1.4%</b>	<b>80,424</b>	<b>28,270</b>	<b>18,053</b>	
Viva <sup>[2]</sup>	blue (incl. blue'A') <sup>[1]</sup>	Yonge Corridor	17,652	12,206	9,548	486,916	489,131	0.5%	5,582,537	5,400,034	-3.3%	18,955	12,278	9,278	Stable ridership
	purple <sup>[1]</sup>	Highway 7 Corridor	8,624	4,701	3,675	224,622	224,483	-0.1%	2,195,537	2,237,543	1.9%	9,060	4,890	3,572	Stable ridership; rapidway opening (Bayview to Hwy 404) August 18, 2013, rapidway opening (Hwy 404 to Warden) August 24, 2014
	green <sup>[1]</sup>	Markham North-South Link	713	-	-	15,007	13,512	-10.0%	165,469	150,507	-9.0%	675	-	-	General corridor decrease
	orange (incl. Züm) <sup>[1]</sup>	Vaughan North-South Link	2,625	772	598	61,992	55,194	-11.0%	699,324	566,482	-19.0%	2,521	497	428	Route restructured June 30, 2013; service to Downsview subway station during non-rush hours discontinued
	pink <sup>[1]</sup>	Finch - Unionville	2,389	-	-	50,228	47,697	-5.0%	503,095	535,877	6.5%	2,372	-	-	Rapidway opening (Bayview to Hwy 404) August 18, 2013, rapidway opening (Hwy 404 to Warden) August 24, 2014
		<b>Viva SUB-TOTAL</b>	<b>32,003</b>	<b>17,679</b>	<b>13,821</b>	<b>838,765</b>	<b>830,017</b>	<b>-1.0%</b>	<b>9,145,962</b>	<b>8,890,443</b>	<b>-2.8%</b>	<b>33,583</b>	<b>17,665</b>	<b>13,278</b>	

[1] Route crosses municipal boundaries.

[2] Viva ridership data adjustment is derived on a monthly basis, and compensates for temporary malfunctions of on-board automatic passenger counter (APC) equipment, and/or for drivers not logging onto Init APC system.

<b>Tot. Boardings</b>	<b>YRT/VIVA SYSTEM TOTAL</b>	<b>112,873</b>	<b>45,336</b>	<b>30,869</b>	<b>2,752,591</b>	<b>2,675,996</b>	<b>-2.8%</b>	<b>28,761,469</b>	<b>28,221,804</b>	<b>-1.9%</b>	<b>114,007</b>	<b>45,935</b>	<b>31,331</b>
-----------------------	------------------------------	----------------	---------------	---------------	------------------	------------------	--------------	-------------------	-------------------	--------------	----------------	---------------	---------------

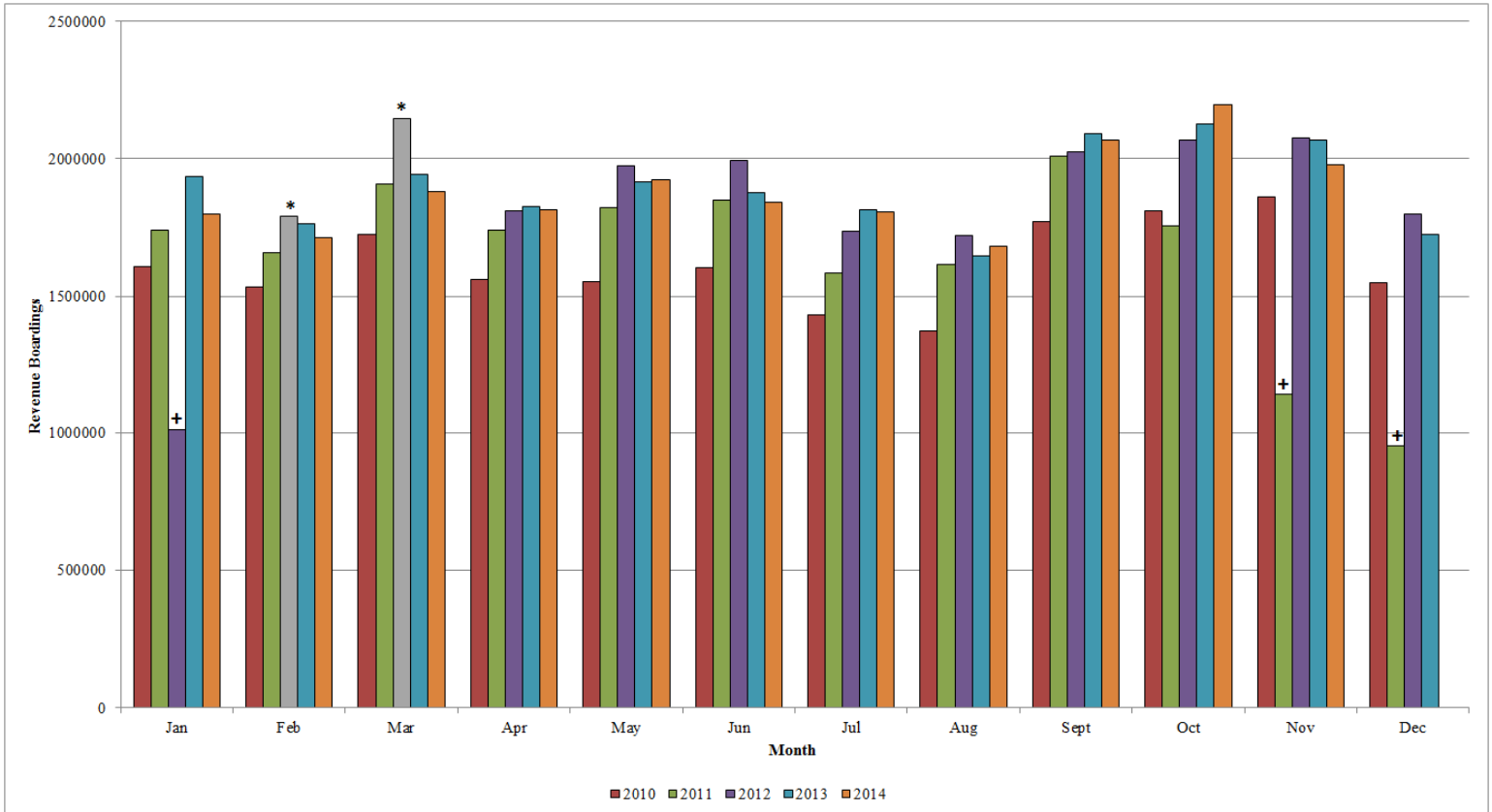
<b>Rev. Boardings</b>	<b>YRT/VIVA SYSTEM TOTAL</b>				<b>2,067,646</b>	<b>1,977,952</b>	<b>-4.3%</b>	<b>20,985,582</b>	<b>20,709,069</b>	<b>-1.3%</b>	<b>84,268</b>		
-----------------------	------------------------------	--	--	--	------------------	------------------	--------------	-------------------	-------------------	--------------	---------------	--	--

Notes: 1. System-wide transfer rate = Revenue Boardings / Total Boardings **26.1%**

# YRT/Viva

## 2014 Revenue Ridership Summary (Actual)

Conventional and BRT services including contracted TTC services north of Steeles Avenue



\* February & March 2012 estimated revenue ridership due to free transit service.

+ Monthly ridership numbers from November 2011 to January 2012 are based on Veolia Transportation, TTC, and Dial-a-Ride services, due to operator strike from October 24, 2011 to February 3, 2012.

Month	2013	2014	Monthly Change ['14 vs '13]	Year to Date (YTD) Change	Average Weekday Revenue Ridership 2014
January	1,934,722	1,799,396	- 7.0%	- 7.0%	71,683
February	1,765,195	1,712,672	- 3.0%	- 5.1%	77,499
March	1,886,106	1,880,873	- 0.3%	- 3.5%	75,947
April	1,879,088	1,815,289	- 3.4%	- 3.4%	74,549
May	1,957,405	1,924,280	- 1.7%	- 3.1%	76,647
June	1,832,425	1,842,496	0.5%	- 2.5%	75,045
July	1,816,294	1,806,567	-0.5%	-2.2%	70,599
August	1,692,340	1,681,947	-0.6%	-2.0%	68,575
September	2,027,509	2,069,584	2.1%	-1.5%	85,592
October	2,126,852	2,198,013	3.3%	-1.0%	87,298
November	2,067,646	1,977,952	-4.3%	-1.3%	84,268
December	1,724,030				
<b>YTD Total</b>	<b>22,709,612</b>	<b>20,709,069</b>			



YORK  
REGION  
TRANSIT

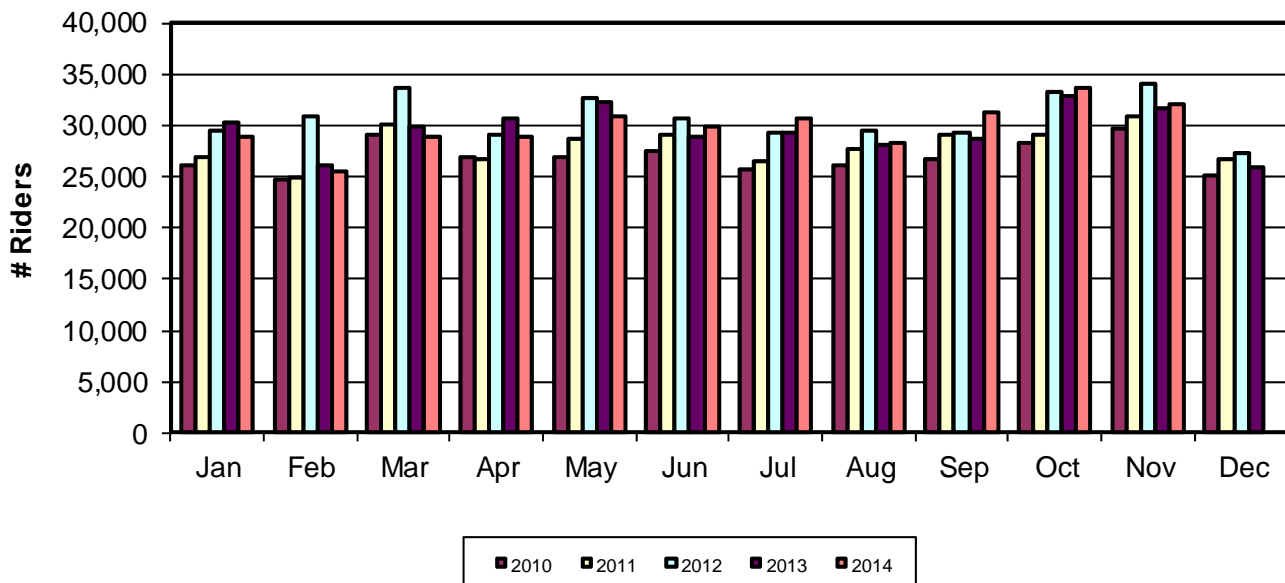


## YRT/Viva

# 2014 Ridership Summary (Actual)

Specialized Services – Mobility Plus

Five-Year Ridership by Month



Month	2013 Ridership	2014 Ridership	Monthly Change ('14 vs. '13)	Year to Date (YTD) Change	Average Weekday Revenue Ridership 2014
January	30,327	28,972	- 4.5%	- 4.5%	1,182
February	26,199	25,419	- 3.0%	- 3.8%	1,147
March	29,858	28,863	- 3.3%	- 3.6%	1,198
April	30,708	28,915	- 5.8%	- 4.2%	1,219
May	32,308	30,811	- 4.6%	- 4.3%	1,285
June	28,984	29,859	- 3.1%	- 3.1%	1,246
July	29,357	30,749	4.7%	-2.0%	1,234
August	28,111	28,316	0.7%	-1.7%	1,189
September	28,689	31,318	9.2%	- 0.5%	1,313
October	32,847	33,679	2.5%	-0.2%	1,356
November	31,636	31,972	1.1%	-0.1%	1,388
December	25,998				
<b>YTD</b>	<b>355,022</b>	<b>328,872</b>			