

MEMORANDUM

TO: Committee of the Whole
FROM: Daniel Kostopoulos, P.Eng.
Commissioner of Transportation and Community Planning
DATE: June 12, 2014
RE: April 2014 York Region Transit (YRT/Viva) Ridership Statistics

This memorandum provides an overview of YRT/Viva ridership statistics for April 2014. YRT/Viva's April revenue ridership was 1.86 million, representing a decrease of approximately 19,900 revenue riders, or a decrease of 1.1 per cent compared to April 2013.

There were 21 weekdays, four Saturdays and five Sundays/Holidays in April 2014, compared to 22 weekdays, four Saturdays and four Sundays/Holidays in April 2013. April 2014 included the Good Friday statutory holiday whereas April 2013 did not, resulting in one less operating weekday compared to last year.

Weather

The weather during April 2013 was very comparable to precipitation and temperatures during April 2014^[1]. The Total precipitation in April 2013 was 98.9 millimetres, compared to 89.0 millimetres in April 2014. The average temperature was 5.8 degrees Celsius in April 2013 and 5.9 degrees Celsius in April 2014.

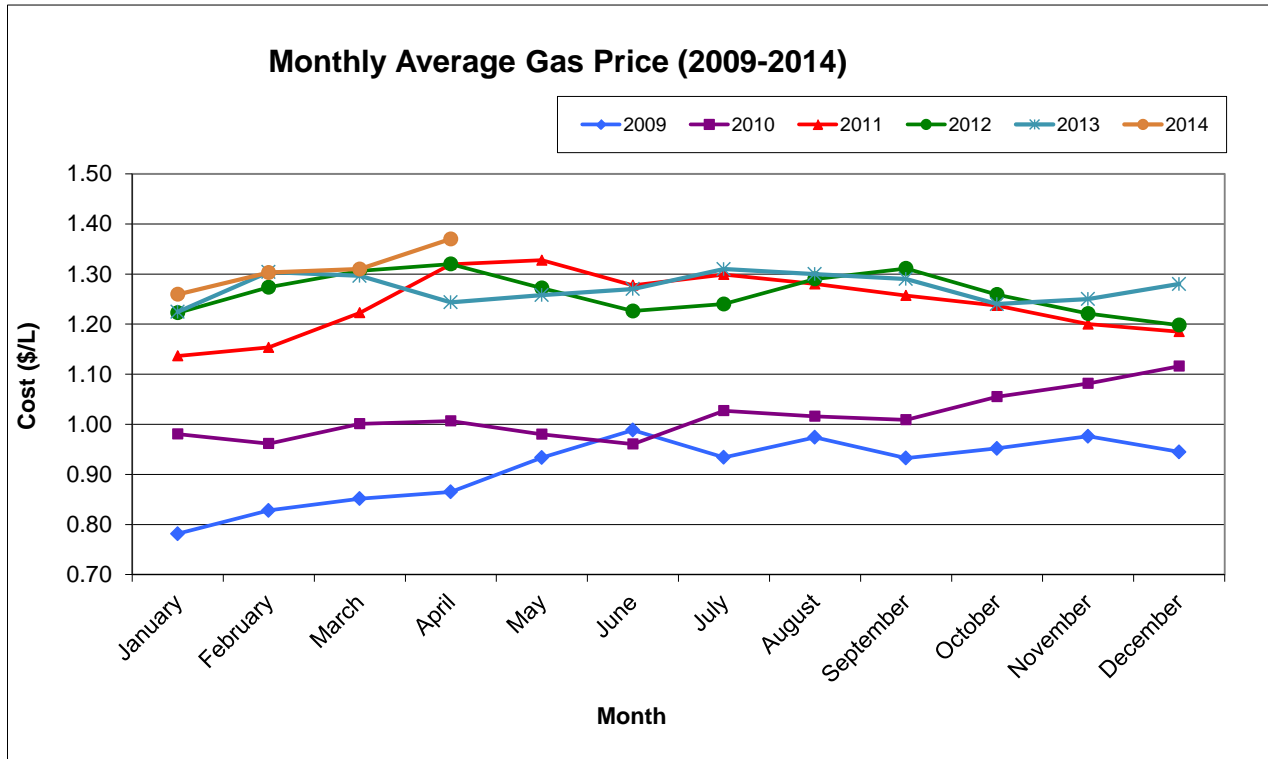
Employment

The national unemployment rate in April 2014 was 6.9 per cent, a decrease of 0.3 per cent from the 7.2 per cent rate in April 2013^[2]. York Region is located within the Employment Insurance Economic Region of Toronto which recorded an unemployment rate of 8.0 per cent in April 2014, a decrease of 0.5 per cent as compared to the 8.5 per cent rate in April 2013^[3].

Gas Prices

Average gasoline prices increased from \$1.24 per litre in April 2013^[4] to \$1.37 per litre in April 2014^[5], an increase of \$0.13 per litre. This information is reflected in Figure 1 which depicts historical gasoline prices since 2009.

Figure 1
Gas Prices between January 2009 and April 2014



Mobility Plus

Mobility Plus ridership decreased 5.8 per cent from 30,708 riders in April 2013 to 28,915 in April 2014, resulting in 1,793 fewer rides. This was due primarily to the fact that there was one less operating weekday in April 2014.

Daniel Kostopoulos, P.Eng.
 Commissioner of Transportation and Community Planning

Notes:

^[1] Historical Climate Data, Toronto Buttonville Airport, Ontario. Retrieved from <http://climate.weather.gc.ca/>. Retrieved date May 7, 2014.

^[2] Labour Force Survey. April 2014, Statistics Canada. Retrieved from <http://www.statcan.gc.ca/subjects-sujets/labour-travail/lfs-epa/lfs-epa-eng.htm>. Retrieved date: May 9, 2014

^[3] EI Economic Region of Toronto – Unemployment Rates for the EI Economic Regions. *Human Resources and Skills Development Canada*. Retrieved from <http://srv129.services.gc.ca/rbin/eng/rates.aspx?id=2014#data>. Retrieved date: May 9, 2014

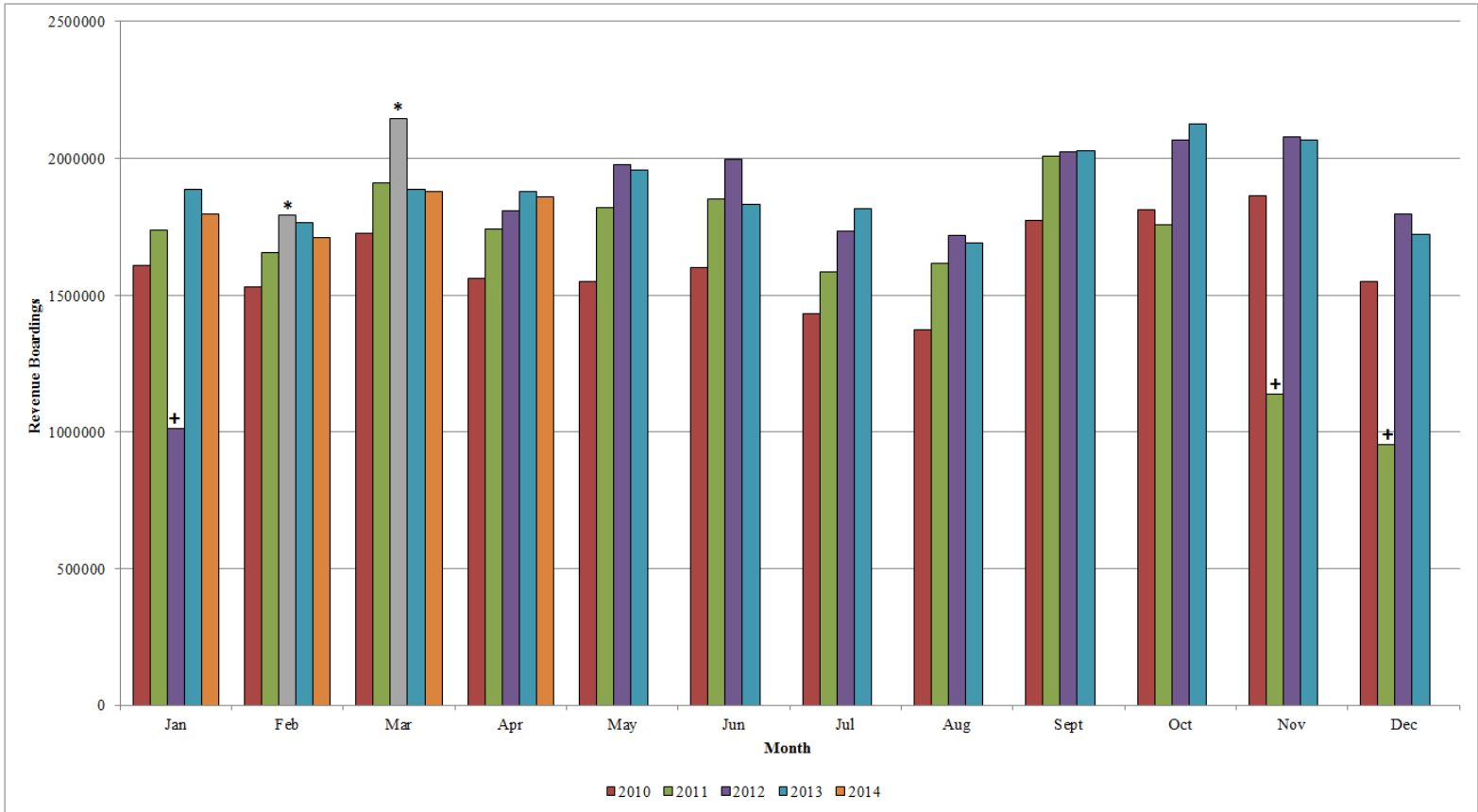
^[4] Fuel Price Data. (2013). *Ministry of Energy*. Retrieved from <http://www.energy.gov.on.ca/en/fuel-prices/fuel-price-data/?fuel=reg&yr=2013>. Retrieved date: May 9, 2014

^[5] Fuel Price Data. (2014). *Ministry of Energy*. Retrieved from <http://www.energy.gov.on.ca/en/fuel-prices/fuel-price-data/?fuel=reg&yr=2014>. Retrieved date: May 9, 2014

YRT/Viva

2014 Revenue Ridership Summary (Actual)

Conventional and BRT services including contracted TTC services north of Steeles Avenue



* February & March 2012 estimated revenue ridership due to free transit service.

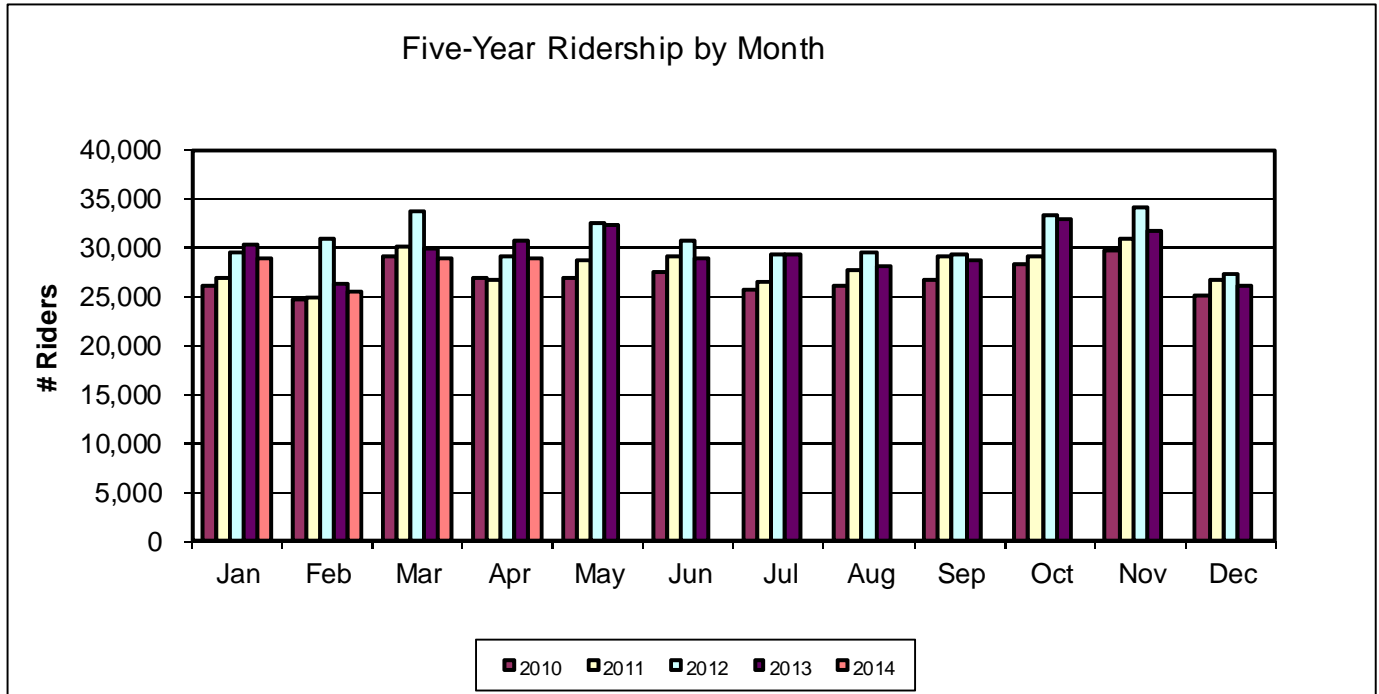
+ Monthly ridership numbers from November 2011 to January 2012 are based on Veolia Transportation, TTC, and Dial-a-Ride services, due to operator strike from October 24, 2011 to February 3, 2012.

Month	2013	2014	Monthly Change ['14 vs '13]	Year to Date (YTD) Change	Average Weekday Revenue Ridership 2014
January	1,934,722	1,799,396	-7.0	-7.0	71,683
February	1,765,195	1,712,672	-3.0	-5.1	77,499
March	1,886,106	1,880,873	-0.3	-3.5	75,947
April	1,879,088	1,859,148	-1.1	-2.9	76,350
May	1,957,405				
June	1,832,425				
July	1,816,294				
August	1,692,340				
September	2,027,509				
October	2,126,852				
November	2,067,646				
December	1,724,030				
YTD Total	22,709,612	7,252,089			

YRT/Viva

2014 Ridership Summary (Actual)

Specialized Services – Mobility Plus



Month	2013 Ridership	2014 Ridership	Monthly Change ('14 vs. '13)	Year to Date (YTD) Change	Average Weekday Revenue Ridership 2014
January	30,327	28,972	-4.5%	-4.5%	1,182
February	26,199	25,419	-3.0%	-3.8%	1,147
March	29,858	28,863	-3.3%	-3.6%	1,198
April	30,708	28,915	-5.8%	-4.2%	1,219
May	32,308				
June	28,984				
July	29,357				
August	28,111				
September	28,689				
October	32,847				
November	31,636				
December	25,998				
YTD	355,022	112,169			

YORK REGION TRANSIT / VIVA MONTHLY RIDERSHIP SUMMARY
APRIL 2014

rev. 14may2014

Apr-14	21 weekdays, 4 Saturdays, 5 Sunday/Holidays
Apr-13	22 weekdays, 4 Saturdays, 4 Sunday/Holidays

YRT Route #	Route Name	2013			TOTAL BOARDINGS (MONTH)			TOTAL BOARDINGS (YEAR TO DATE)			2014			Notes
		Avg Wkdy Boardings	Avg Sat Boardings	Avg Sn/Hol Boardings	2013	2014	Percentage ('14 vs '13)	2013	2014	Percentage ('14 vs '13)	Avg Wkdy Boardings	Avg Sat Boardings	Avg Sn/Hol Boardings	
1 ^[1]	Highway 7	1,923	828	509	47,841	42,937	-10.3%	178,056	155,285	-12.8%	1,809	732	373	Route restructured June 30, 2013; Rapidway opening (Bayview to Hwy 404) August 18, 2013; ridership migration to Viva services
1 ^[1]	Milliken	2,003	824	403	49,262	46,952	-4.7%	181,077	181,675	0.3%	1,976	850	365	Stable ridership
2 ^[1]	Thornhill - York U.	1,753	500	241	41,769	41,017	-1.8%	169,745	157,013	-7.5%	1,742	547	414	Stable ridership
3 ^[1]	Kennedy Rd	1,468	578	379	36,347	36,744	1.1%	132,788	131,256	-1.2%	1,515	622	457	Stable ridership
9 ^[1]	Ninth Line	295	-	-	6,544	6,600	0.9%	24,489	24,197	-1.2%	312	-	-	Stable ridership
14	14th Avenue	728	-	-	16,101	14,334	-11.0%	59,011	48,866	-17.2%	680	-	-	Route restructured June 30, 2013; Services to Markham Stouffville Hospital discontinued
15	Stouffville	-	-	-	-	399	-	-	633	-	16	8	5	New route implemented February 23, 2014
16	16th Ave	-	-	-	-	36,636	-	-	133,102	-	1,434	911	544	Route implemented June 30, 2013; Ridership migration from Route 85
18	Bur Oak	907	143	-	20,597	20,136	-2.2%	75,837	70,977	-6.4%	930	138	-	Stable ridership
25	Major Mackenzie	-	-	-	-	13,059	-	-	48,091	-	620	-	-	Route implemented June 30, 2013; Ridership migration from Route 4/4A
40	Unionville Local	567	161	68	13,435	12,926	-3.8%	46,029	45,246	-1.7%	569	138	75	Stable ridership
41	Markham Local	313	62	84	7,598	5,824	-23.3%	28,258	23,259	-17.7%	253	72	37	Decreased employment travel
42	Berczy	140	-	-	3,090	2,900	-6.1%	11,873	11,315	-4.7%	138	-	-	Stable ridership
45	Mingay	73	-	-	1,620	1,735	7.1%	5,842	6,452	10.4%	82	-	-	Stable ridership
201	Markham GO Shuttle	92	-	-	2,035	1,787	-12.2%	7,358	7,344	-0.2%	85	-	-	Stable ridership
202	Unionville GO Shuttle	142	-	-	3,133	2,882	-8.0%	11,402	11,746	3.0%	137	-	-	Stable ridership
203	Milliken GO Shuttle	74	-	-	1,635	1,310	-19.9%	6,061	5,176	-14.6%	62	-	-	Decreased travel to GO Train station
300 ^[1]	Business Express	374	-	-	8,273	8,067	-2.5%	31,408	31,858	1.4%	382	-	-	Stable ridership
301 ^[1]	Markham Express	189	-	-	4,189	3,885	-7.3%	15,239	15,531	1.9%	184	-	-	Stable ridership
302 ^[1]	Unionville Express	232	-	-	5,126	4,471	-12.8%	17,752	18,008	1.4%	212	-	-	Stable ridership
303 ^[1]	Bur Oak Express	356	-	-	7,871	9,103	15.7%	27,881	37,504	34.5%	432	-	-	Two additional morning trips and one afternoon trip added in September 2013
303 ^[1]	Mount Joy Express	307	-	-	6,787	6,109	-10.0%	24,410	23,989	-1.7%	290	-	-	Stable ridership
30822	Markham Community Bus	80	77	-	2,076	2,042	-1.6%	7,034	7,370	4.8%	81	83	-	Stable ridership; Increased service to 2 Raymerville Drive effective September 2013
TTC	Markham Total	12,016	3,173	1,684	285,329	321,855	12.8%	1,061,550	1,195,893	12.7%	13,941	4,101	2,270	
TTC 17A ^[1]	Birchmount	198	-	-	4,356	4,683	7.5%	16,373	15,533	-5.1%	223	-	-	Stable ridership
TTC 24D, 224B/C/D ^[1]	Vic Park North (Woodbine)	1,036	114	69	23,524	21,759	-7.5%	95,211	93,402	-1.9%	1,012	83	35	Stable ridership; TTC 24D restructured June 23, 2013
TTC 68B ^[1]	Warden North	841	338	216	20,718	20,033	-3.3%	91,811	91,455	-0.4%	843	320	210	Stable ridership
TTC 102D ^[1]	Markham Rd	881	363	205	21,654	23,066	6.5%	95,522	105,472	10.4%	979	353	219	Increased employment travel
TTC 129A ^[1]	McCowan North	2,413	1,301	759	61,326	55,541	-9.4%	265,304	258,315	-2.6%	2,262	1,081	743	Stable ridership
	TTC (Markham) Total	5,369	2,116	1,249	131,578	125,082	-4.9%	564,221	564,177	0.0%	5,319	1,837	1,207	
	Markham & TTC Total	17,385	5,289	2,933	416,907	446,937	7.2%	1,625,771	1,760,070	8.3%	19,260	5,938	3,477	
4/4A ^[1]	Major Mackenzie	4,034	1,897	1,182	101,620	83,498	-17.8%	376,427	303,895	-19.3%	3,330	1,590	1,346	Ridership migration to Routes 25 & 26; Route restructured June 30, 2013
5 ^[1]	Clark	1,633	512	-	38,124	33,455	-12.2%	142,362	134,400	-5.6%	1,501	445	-	Decreased student and employment travel
7 ^[1]	Martin Grove	1,062	149	-	24,250	21,933	-9.6%	90,443	85,033	-6.0%	997	198	-	Decreased student travel to Humber College
102	York U. (Woodbridge)	345	97	67	8,320	7,544	-9.3%	35,472	34,144	-3.7%	313	91	107	Route restructured July 2012
13	Pine Valley	452	167	-	10,753	10,698	-0.5%	38,478	39,539	2.8%	467	193	-	Stable ridership
13 ^[1]	Islington	481	137	-	11,280	10,820	-4.1%	41,240	40,346	-2.2%	484	126	-	Stable ridership
201 ^[1]	Jane	2,519	1,838	1,115	68,131	72,639	6.6%	271,522	294,803	8.6%	2,826	1,664	1,183	Increased travel to Vaughan Mills Mall; Ridership migration from TTC Route 35D; Improved midday frequency in September 2013
201	Vellore Local	-	-	-	-	3,609	-	-	14,034	-	171	-	-	Route implemented June 30, 2013
22/22A ^[1]	King City	897	64	-	20,097	34,891	73.6%	104,490	145,332	39.1%	1,638	78	-	Ridership migration from TTC Route 107F; Improved weekday frequency in September 2013; Increased travel to York University
226	Thornhill Woods	744	-	-	16,535	15,109	-	65,805	62,450	-5.1%	715	-	-	Midday and evening service discontinued between Promenade Mall and Finch GO Bus Terminal April 20, 2014
28	Maple Local	-	-	-	-	12,060	-	-	43,419	-	516	175	95	Route implemented June 30, 2013; Ridership migration from Route 4/4A and Route 360; One additional AM trip in September 2013
61	Zenway	56	-	-	1,258	551	-56.2%	5,182	3,491	-32.6%	26	-	-	Decreased employment travel; Dial-a-ride service introduced February 23, 2014
61 ^[1]	King Local	20	-	-	440	337	-23.4%	1,984	1,135	-42.8%	16	-	-	Route implemented January 2013
77 ^[1]	Highway 7	4,453	2,100	974	110,948	109,767	-1.1%	409,497	407,127	-0.6%	4,544	1,661	1,398	Stable ridership; Route travels through vivaNext construction zone
99 (incl. 98E, 98/99) ^[1]	Yonge	2486	1442	1429	66,519	64,061	-3.7%	261,313	230,360	-11.8%	2,434	1,414	1,382	General corridor decrease
360 ^[1]	Vaughan Express	280	-	-	6,328	5,217	-17.6%	27,102	21,374	-21.1%	244	-	-	Route restructured June 30, 2013; Ridership migration to Route 26
360	Vaughan Mills/Wonderland	-	-	-	-	-	-	1,096	1,053	-3.9%	-	-	-	Seasonal route suspended after January 5; Service will resume in May 2014
TTC	Vaughan Total	19,462	8,403	4,767	484,603	486,189	0.3%	1,872,413	1,861,935	-0.6%	20,222	7,635	5,511	
TTC 35-D ^[1]	Jane	1,226	281	-	28,096	18,795	-33.1%	119,710	81,973	-31.5%	895	-	-	Non-rush hour and Saturday service discontinued June 23, 2013; Ridership migration to Route 20
TTC 37-D ^[1]	Islington	155	-	-	3,410	-	-100.0%	12,194	-	-100.0%	-	-	-	Route discontinued June 23, 2013
TTC 105/105-B ^[1]	Dufferin North	2,038	801	539	50,196	48,777	-2.8%	204,816	206,834	1.0%	2,064	707	521	Stable ridership
TTC 107-C/D/B/F ^[1]	Keele North	2,760	623	435	64,952	51,544	-20.6%	269,569	249,969	-7.3%	2,248	639	356	Route 107F branch discontinued June 23, 2013; Ridership migration to Route 22/22A
TTC 160 ^[1]	Bathurst North	821	409	290	20,858	18,170	-12.9%	77,909	71,883	-7.7%	726	431	240	Ridership migration to Route 88
TTC 165-D/F ^[1]	Weston Road North	1,613	760	487	40,474	37,062	-8.4%	174,744	183,781	5.2%	1,536	654	438	Stable ridership
	TTC (Vaughan) Total	8,613	2,874	1,751	207,986	174,348	-16.2%	858,942	794,440	-7.5%	7,469	2,431	1,555	
	Vaughan & TTC Total	28,075	11,277	6,518	692,589	660,537	-4.6%	2,731,355	2,656,375	-2.7%	27,691	10,066	7,066	

* Route crosses municipal boundaries.

	YRT Route #	Route Name	2013			TOTAL BOARDINGS (MONTH)			TOTAL BOARDINGS (YEAR TO DATE)			2014			
			Avg Wkdy Boardings	Avg Sat Boardings	Avg Sn/Hol Boardings	2013	2014	Percentage ('14 vs '13)	2013	2014	Percentage ('14 vs '13)	Avg Wkdy Boardings	Avg Sat Boardings	Avg Sn/Hol Boardings	
Richmond Hill	80	Elgin Mills	-	-	-	-	13,380	-	49,786	-	549	290	131	Implemented June 30, 2013 due to Route 90 restructuring	
	81	Inspiration	212	-	-	4,672	4,692	0.4%	17,837	17,477	-2.0%	223	-	-	Stable ridership
	82	Valleymede	468	-	-	10,319	7,983	-22.6%	34,548	28,739	-16.8%	379	-	-	Route restructured June 2013; services converted to rush hour service only
	83	Trench	1,050	90	-	23,506	18,166	-22.7%	83,617	76,313	-8.7%	864	-	-	Saturday services discontinued June 2013 due to low ridership
	84	Oak Ridges	179	18	-	4,019	4,617	14.9%	15,168	16,809	10.8%	216	19	-	Route restructured February 2013; Route 84A branch discontinued
	^[1] 85	16th Ave/Rutherford	4,652	2,557	1,518	119,416	80,660	-32.5%	446,329	298,363	-33.2%	3,225	1,857	1,003	Route restructured June 30, 2013; Ridership migration to Route 16 and Route 244
	^[1] 86	Weldrick-Newkirk	913	205	-	20,982	21,417	2.1%	75,302	81,274	7.9%	969	256	-	General growth in the Red Maple area as a result of route restructuring in July 2012; ridership migration from Route 87
	^[1] 87	Langstaff Local	891	107	-	20,085	10,438	-48.0%	71,067	36,470	-48.7%	496	-	-	Route restructured June 30, 2013; Ridership migration to Route 26, Route 85 and Route 86
	^[1] 88/89/90	Bathurst/Bathurst Express	3,998	2,597	1,924	106,688	103,101	-3.4%	408,057	408,574	0.1%	4,009	2,174	1,891	Stable ridership
	^[1] 88/89/90	RH Community Bus	138	184	155	4,398	4,065	-7.6%	17,830	15,734	-11.8%	153	58	122	Stable ridership
	^[1] 88/89/90	Leslie	3,723	1,146	582	89,314	60,812	-31.9%	339,447	261,137	-23.1%	2,593	886	518	Route restructured June 30, 2013; Ridership migration to Route 80
	90/90B	Bayview/Express	4,058	1,948	1,287	102,642	95,027	-7.4%	387,795	354,183	-8.7%	3,918	1,514	1,298	Decreased employment travel
	91/91A/91B/91E	Mill Pond GO Shuttle	110	-	-	2,430	2,399	-1.3%	10,618	9,740	-8.3%	114	-	-	Stable ridership
	241	Bev. Acres GO Shuttle	95	-	-	2,092	1,471	-29.7%	7,455	5,672	-23.9%	70	-	-	Decreased travel to GO Train stations
	242	N. Richvale GO Shuttle	36	-	-	796	611	-23.2%	3,078	2,635	-14.4%	29	-	-	Decreased travel to GO Train stations
	243	Redstone GO Shuttle	202	-	-	4,456	3,682	-17.4%	16,899	15,297	-9.5%	175	-	-	Decreased travel to GO Train stations
244	Beaver Creek Shuttle	-	-	-	-	1,074	-	-	4,087	-	-	-	-	Implemented June 30, 2013 due to Route 85 restructuring	
Richmond Hill Total			20,725	8,852	5,466	515,815	433,595	-15.9%	1,935,047	1,682,290	-13.1%	18,033	7,054	4,963	
Aurora	^[1] 32	Aurora North	128	-	-	2,821	2,290	-18.8%	9,280	8,042	-13.3%	109	-	-	Decreased employment travel
	32	Aurora South	546	26	-	12,165	11,173	-8.2%	44,661	39,953	-10.5%	528	21	-	Last southbound trip discontinued in Feb 2014 due to low ridership; rider migration to Route 33/33A
	33/33A	Wellington	481	119	-	11,093	11,353	2.3%	43,436	42,419	-2.3%	515	130	-	Stable ridership
	Aurora Total			1,155	145	-	26,079	24,816	-4.8%	97,377	90,414	-7.2%	1,152	151	-
Newmarket, East Gwill., Georgina	44	Bristol	306	61	-	7,005	6,443	-8.0%	25,235	23,510	-6.8%	289	84	-	Stable ridership
	50	Queensway	1,149	701	497	30,540	28,081	-8.1%	108,101	103,936	-3.9%	1,087	655	461	Stable ridership
	51	Keswick Local	179	36	-	4,112	4,441	8.0%	16,427	16,198	-1.4%	202	42	-	Improved connections to Our Lady of the Lake and Keswick High Schools implemented in the Feb. 2014
	^[1] 52	Holland Landing	275	137	-	6,656	5,365	-19.4%	23,927	19,772	-17.4%	233	107	-	Services converted to Dial-a-Ride after 7 p.m. Monday to Saturday effective April 21, 2013
	^[1] 52	Bayview	447	119	-	10,395	9,363	-9.9%	37,470	34,116	-9.0%	418	133	-	Stable ridership
	55/55B	Davis Drive	995	586	375	25,899	26,019	0.5%	103,054	96,176	-6.7%	1,046	557	336	Stable ridership; vivaNext construction occurring along Davis Drive
	56	Gorham-Eagle	504	199	146	12,550	12,082	-3.7%	44,390	45,681	2.9%	489	252	147	Stable ridership
	57/57A	Mulock	694	300	207	17,367	23,191	33.5%	79,284	83,360	5.1%	979	397	188	General corridor growth
	58	Mount Albert	101	-	-	2,239	2,643	18.0%	9,588	9,482	-1.1%	125	1	-	General corridor growth
	59	The ROC	-	-	-	-	-	-	646	-	-	-	-	-	Route discontinued March 2013
	^[1] 92	Yonge	800	461	447	21,358	17,292	-19.0%	78,644	67,147	-14.6%	665	461	281	General corridor decrease
	92	Aurora-Nwmkt GO Shuttle	56	-	-	1,237	1,073	-13.3%	5,036	4,647	-7.7%	51	-	-	Ridership migration to Route 57A; decreased employment travel
	223	Newmarket GO Shuttle	16	-	-	353	425	20.4%	1,423	1,583	11.2%	20	-	-	General corridor growth
520/521	Newmarket Community Bus	83	30	19	2,042	2,038	-0.2%	7,419	7,540	1.6%	86	22	27	Stable ridership	
Newmarket Total			5,605	2,630	1,691	141,753	138,457	-2.3%	540,644	513,148	-5.1%	5,691	2,711	1,440	
YRT SUB-TOTAL			72,945	28,193	16,608	1,793,143	1,704,342	-5.0%	6,930,194	6,702,297	-3.3%	71,827	25,920	16,946	
Viva	blue (incl. blue'A) ^[1]	Yonge Corridor	19,231	12,976	8,909	513,636	476,837	-7.2%	1,984,544	1,856,925	-6.4%	17,817	13,130	9,005	General corridor decrease; Decreased travel to/from Finch GO Bus Terminal
	purple ^[1]	Highway 7 Corridor	7,106	4,609	3,378	190,624	188,093	-1.3%	799,571	812,992	1.7%	7,165	4,932	3,412	Stable ridership; rapidway opening (Bayview to Hwy 404) August 18, 2013; Increased travel to Seneca Markham
	green ^[1]	Markham North-South Link	705	-	-	15,574	13,376	-14.1%	60,558	56,917	-6.0%	636	-	-	General corridor decrease
	orange (incl. Zum) ^[1]	Vaughan North-South Link	2,500	1,317	900	64,102	48,464	-24.4%	267,433	209,206	-21.8%	2,073	665	437	Route restructured June 30, 2013; Service to Downsview Subway Station during non-rush hours discontinued
	pink ^[1]	Finch - Unionville	2,093	-	-	46,287	49,771	7.5%	177,457	200,333	12.9%	2,365	-	-	Rapidway opening (Bayview to Hwy 404) August 18, 2013
Viva SUB-TOTAL			31,635	18,902	13,187	830,223	776,541	-6.5%	3,289,563	3,136,373	-4.7%	30,056	18,727	12,854	

[1] Route crosses municipal boundaries.

[2] Viva ridership data adjustment is derived on a monthly basis, and compensates for temporary malfunctions of on-board automatic passenger counter (APC) equipment, and/or for drivers not logging onto Init APC system.

Tot. Boardings	YRT/VIVA SYSTEM TOTAL	104,580	47,095	29,795	2,623,366	2,480,883	-5.4%	10,219,757	9,838,670	-3.7%	101,883	44,647	29,800
----------------	-----------------------	---------	--------	--------	-----------	-----------	-------	------------	-----------	-------	---------	--------	--------

Rev. Boardings	YRT/VIVA SYSTEM TOTAL				1,879,088	1,859,148	1.1%	7,465,111	7,252,089	2.9%	76,350		
----------------	-----------------------	--	--	--	-----------	-----------	------	-----------	-----------	------	--------	--	--

Notes: 1. System-wide transfer rate = Revenue Boardings / Total Boardings 25.1%