

MEMORANDUM

TO: Committee of the Whole
FROM: Daniel Kostopoulos, P.Eng.
Commissioner of Transportation and Community Planning
DATE: March 19, 2014
RE: York Region Transit (YRT/Viva) Ridership Statistics - February 2014

This memorandum provides an overview of YRT/Viva ridership statistics for February 2014. YRT/Viva's February revenue ridership was 1.71 million, representing a decrease of approximately 53,000 revenue riders, or a decrease of three per cent compared to February 2013.

Weather

Heavy snowfalls and colder temperatures contributed to the lower ridership in February 2014 as ridership decreased during days with extreme cold temperatures and heavy snowfalls. Between February 3 and 13, 2014, York Region experienced 11 consecutive days with mean temperature below -10° Celsius and two days of snow. During this period, ridership showed an eight per cent decrease when compared to the same time period in 2013. The mean temperature in February 2014 was -9.2° Celsius, compared to -5.4° Celsius in February 2013^[1]. A total snowfall of 51.3 cm fell in February 2014^[1] and there were 11 days requiring winter maintenance in York Region compared with seven days in February 2013.

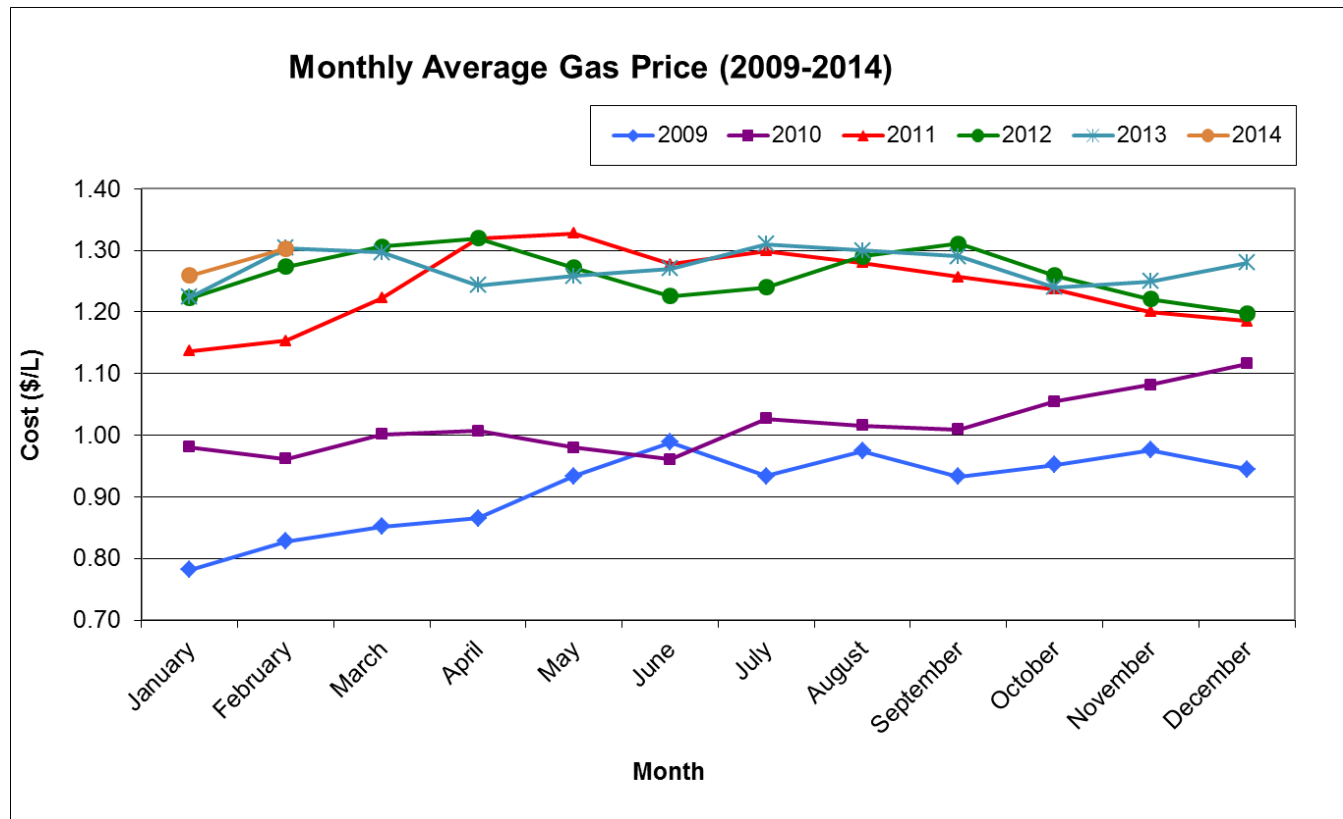
Employment

The national unemployment rate in February 2013 and 2014 was seven per cent^[2]. York Region is located within the Employment Insurance Economic Region of Toronto which recorded an unemployment rate of 8.3 per cent in February 2013 and 2014^[3].

Gas Prices

Average gasoline price in February 2013^[4] and 2014^[5] was \$1.30 per litre.

Figure 1
Gas Prices between January 2009 and February 2014



Mobility Plus

Mobility Plus ridership decreased three percent from 26,199 in February 2013 to 25,419 in February 2014. This can be contributed to colder temperature and network telephone issues. Customers were unable to contact the office or use the Interactive Voice Response system (IVR) and drivers arrived at locations only to be cancelled at the door. As a result, there was a fifty-three percent increase in the number of “no shows” totaling 830.

Daniel Kostopoulos, P.Eng.
 Commissioner of Transportation and Community Planning

Notes:

- ^[1] Historical Climate Data, Toronto Buttonville Airport, Ontario. Retrieved from <http://climate.weather.gc.ca/>. Retrieved date March 7, 2014.
- ^[2] Labour Force Survey. February 2014, Statistics Canada. Retrieved from <http://www.statcan.gc.ca/subjects-sujets/labour-travail/lfs-epa/lfs-epa-eng.htm>. Retrieved date: March 11, 2014
- ^[3] EI Economic Region of Toronto – Unemployment Rates for the EI Economic Regions. Human Resources and Skills Development Canada. Retrieved from <http://srv129.services.gc.ca/rbin/eng/rates.aspx?id=2014#data>. Retrieved date: March 11, 2014
- ^[4] Fuel Price Data. (2013). Ministry of Energy. Retrieved from <http://www.energy.gov.on.ca/en/fuel-prices/fuel-price-data/?fuel=reg&yr=2013>. Retrieved date: March 11, 2014
- ^[5] Fuel Price Data. (2014). Ministry of Energy. Retrieved from <http://www.energy.gov.on.ca/en/fuel-prices/fuel-price-data/?fuel=reg&yr=2014>. Retrieved date: March 11, 2014

YORK REGION TRANSIT / VIVA - MONTHLY RIDERSHIP SUMMARY
FEBRUARY 2014

rev. 20mar2014

Feb-14	19 weekdays, 4 Saturdays, 5 Sunday/Holidays
Feb-13	19 weekdays, 4 Saturdays, 5 Sunday/Holidays

YRT Route #	Route Name	2013			TOTAL BOARDINGS (MONTH)			TOTAL BOARDINGS (YEAR TO DATE)			2014			Notes
		Avg Wkdy Boardings	Avg Sat Boardings	Avg Sn/Hol Boardings	2013	2014	Percentage ('14 vs '13)	2013	2014	Percentage ('14 vs '13)	Avg Wkdy Boardings	Avg Sat Boardings	Avg Sn/Hol Boardings	
1 ^[1]	Highway 7	1,862	699	392	40,320	34,311	-14.9%	84,229	70,792	-16.0%	1,586	617	318	Route restructured June 30, 2013; Rapidway opening (Bayview to Hwy 404) August 18, 2013; ridership migration to Viva services
2 ^[1]	Milliken	1,924	714	392	41,728	42,724	2.4%	86,000	89,437	4.0%	1,974	782	376	Stable ridership
3 ^[1]	Thornhill - York U.	1,922	487	340	40,463	30,609	-24.4%	84,721	70,146	-17.2%	1,443	406	272	Ridership migration to Viva purple; fewer students travelling to York University
8	Kennedy Rd	1,389	498	371	30,408	30,569	0.5%	63,178	61,133	-3.2%	1,384	579	369	Stable ridership
9 ^[1]	Ninth Line	330	-	-	6,327	5,647	-10.7%	11,905	11,040	-7.3%	295	-	-	Impact due to colder temperature
14	14th Avenue	733	24	-	14,128	11,763	-16.7%	28,912	21,113	-27.0%	617	-	-	Route restructured June 30, 2013; Services to Markham Stouffville Hospital discontinued
15	Stouffville	-	-	-	-	35	-	-	35	-	6	-	5	New route to be implemented effective February 23, 2014
16	16th Ave	-	-	-	-	31,516	-	-	62,349	-	1,361	774	484	Route implemented June 30, 2013; Ridership migration from Route 85
18	Bur Oak	937	106	-	18,332	17,644	-3.8%	37,198	34,472	-7.3%	906	94	-	Decreased employment travel; Impact due to colder temperature
25	Major Mackenzie	-	-	-	-	11,550	-	-	23,629	-	606	-	-	Route implemented June 30, 2013; Ridership migration from Route 4/4A
40	Unionville Local	508	122	75	10,617	11,541	8.7%	21,537	23,166	7.6%	567	79	75	Stable ridership
41	Markham Local	300	45	57	6,237	5,711	-8.4%	13,943	11,721	-15.9%	264	100	51	Decreased employment travel; Impact due to colder temperature
42	Berczy	156	-	-	2,973	2,955	-0.6%	5,914	5,846	-1.1%	155	-	-	Stable ridership
45	Mingay	81	-	-	1,545	1,698	9.9%	2,858	3,135	9.7%	89	-	-	Potential ridership migration from Route 18
201	Markham GO Shuttle	90	-	-	1,718	1,768	2.9%	3,484	3,729	7.0%	93	-	-	Stable ridership
202	Unionville GO Shuttle	136	-	-	2,596	2,723	4.9%	5,536	5,941	7.3%	143	-	-	Stable ridership
203	Milliken GO Shuttle	75	-	-	1,436	1,203	-16.2%	2,983	2,513	-15.8%	63	-	-	Decreased employment travel
300 ^[1]	Business Express	374	-	-	7,184	7,447	3.7%	15,427	15,656	1.5%	390	-	-	Stable ridership
301 ^[1]	Markham Express	186	-	-	3,558	3,608	1.4%	7,820	7,701	-1.5%	189	-	-	Stable ridership
302 ^[1]	Unionville Express	208	-	-	3,967	4,334	9.3%	8,515	9,061	6.4%	227	-	-	Stable ridership
303 ^[1]	Bur Oak Express	334	-	-	6,384	8,868	38.9%	13,447	18,893	40.5%	465	-	-	Two additional morning trips and one afternoon trip added in September 2013
304 ^[1]	Mount Joy Express	293	-	-	5,592	5,637	0.8%	11,752	11,774	0.2%	296	-	-	Stable ridership
522	Markham Community Bus	65	69	-	1,519	1,509	-0.7%	3,145	3,219	2.4%	64	70	-	Stable ridership; Increased service to 2 Raymerville Drive effective September 2013
	Markham Total	11,903	2,764	1,627	247,032	275,370	11.5%	512,504	566,501	10.5%	13,183	3,501	1,950	
TTC 17A ^[1]	Birchmount	197	-	-	3,743	3,325	-11.2%	8,077	7,175	-11.2%	175	-	-	Decreased employment travel
TTC 24D, 224B/C/D ^[1]	Vic Park North (Woodbine)	1,141	90	42	22,271	22,004	-1.2%	48,047	47,378	-1.4%	1,123	85	65	TTC 24D restructured June 23, 2013; 224B restructured June 30, 2013
TTC 68B ^[1]	Warden North	975	554	276	22,121	21,995	-0.6%	47,167	47,044	-0.3%	1,018	347	253	Stable ridership
TTC 102D ^[1]	Markham Rd	1,037	383	352	22,995	25,406	10.5%	49,101	54,280	10.5%	1,156	408	362	Increased employment travel
TTC 129A ^[1]	McCowan North	2,781	1,429	985	63,480	62,571	-1.4%	135,303	133,341	-1.5%	2,733	1,396	1,012	Stable ridership
	TTC (Markham) Total	6,131	2,456	1,655	134,610	135,301	0.5%	287,695	289,218	0.5%	6,205	2,236	1,692	
	Markham & TTC Total	18,034	5,220	3,282	381,642	410,671	7.6%	800,199	855,719	6.9%	19,388	5,737	3,642	
4/4A ^[1]	Major Mackenzie	4,082	1,574	1,056	89,789	67,794	-24.5%	184,046	138,271	-24.9%	2,942	1,629	1,008	Ridership migration to Routes 25 & 26; Impact due to colder temperature
5 ^[1]	Clark	1,781	493	-	36,061	32,768	-9.1%	73,236	67,027	-8.5%	1,611	499	-	Decreased student and employment travel; Impact due to colder temperature
7 ^[1]	Martin Grove	964	153	-	19,157	19,295	0.7%	43,475	40,468	-6.9%	974	139	-	Stable ridership
10 ^[1]	York U. (Woodbridge)	374	108	91	8,071	8,038	-0.4%	17,766	16,197	-8.8%	377	98	88	Route restructured July 2012; Ridership migration from Route 11
12	Pine Valley	408	141	-	8,555	8,787	2.7%	17,583	17,748	0.9%	425	149	-	Stable ridership
13	Islington	463	99	-	9,366	9,400	0.4%	19,307	18,578	-3.8%	461	135	-	Stable ridership
20 ^[1]	Jane	2,644	1,414	924	61,258	65,981	7.7%	129,066	139,282	7.9%	2,866	1,574	928	Increased travel to Vaughan Mills Mall; Ridership migration from TTC Route 35D; Improved midday frequency in September 2013
21	Vellore Local	-	-	-	-	3,225	-	-	7,102	-	169	-	-	Route implemented June 30, 2013
22/22A ^[1]	King City	1,332	87	-	25,773	32,364	25.6%	54,968	70,983	29.1%	1,678	81	-	Ridership mitigation from TTC Route 107F; Improved weekday frequency in September 2013; Increased travel to York University
23 ^[1]	Thornhill Woods	885	-	-	16,958	15,327	-9.6%	34,332	30,330	-11.7%	802	-	-	Decreased employment travel; Ridership migration to Route 88
26	Maple Local	-	-	-	-	9,689	-	-	19,716	-	461	86	103	Route implemented June 30, 2013; Ridership migration from Route 4/4A and Route 360; One additional AM trip in September 2013
28	Zenway	69	-	-	1,334	1,188	-10.9%	2,713	2,219	-18.2%	62	-	-	Decreased employment travel; Dial-a-ride service introduced February 23, 2014
61	King Local	22	-	-	418	287	-31.3%	684	515	-24.7%	15	-	-	Route implemented January 2013; Impact due to colder temperature
77 ^[1]	Highway 7	4,109	1,794	1,012	91,164	94,624	3.8%	198,175	192,689	-2.8%	4,262	2,083	927	Route travels through vivaNext construction zone; Impact due to colder temperature
99 (incl. 98E, 98/99) ^[1]	Yonge	2,199	1,066	2,435	58,633	53,928	-8.0%	121,219	105,244	-13.2%	2,339	1,166	900	General corridor decrease
360 ^[1]	Vaughan Express	324	-	-	6,319	4,997	-20.9%	13,907	10,303	-25.9%	259	-	-	Route restructured June 30, 2013; Ridership migration to Route 26; Impact due to colder temperature
760	Vaughan Mills/Wonderland	-	-	-	-	-	-	1,096	1,053	-3.9%	-	-	-	Seasonal route suspended after January 5th; Service will resume in May
	Vaughan Total	19,656	6,929	5,518	432,856	427,692	-1.2%	911,573	877,725	-3.7%	19,703	7,639	3,954	
TTC 35-D ^[1]	Jane	1,426	356	-	28,518	19,361	-32.1%	61,314	41,779	-31.9%	1,019	-	-	Non-rush hour and Saturday service discontinued June 23, 2013; Ridership migration to Route 20
TTC 37-D ^[1]	Islington	144	-	-	2,736	-	-	5,904	-	-	-	-	-	Route discontinued June 23, 2013; Ridership migration to Route 12
TTC 105/105-B ^[1]	Dufferin North	2,208	780	612	48,132	48,758	1.3%	102,888	104,143	1.2%	2,209	738	767	Stable ridership
TTC 107-C/D/B/F ^[1]	Keele North	3,065	708	528	63,707	60,980	-4.3%	136,609	130,825	-4.2%	2,955	710	399	Route 107F branch discontinued June 23, 2013; Ridership migration to Route 22/22A
TTC 160 ^[1]	Bathurst North	762	413	325	17,755	16,576	-6.6%	37,796	35,339	-6.5%	729	340	273	Ridership migration to Route 88
TTC 165-D/F ^[1]	Weston Road North	1,738	1,132	846	41,780	45,254	8.3%	88,774	96,475	8.7%	1,989	1,012	683	General corridor growth; New development at Weston Road and Major Mackenzie Drive
	TTC (Vaughan) Total	9,343	3,389	2,311	202,628	190,929	-5.8%	433,285	408,561	-5.7%	8,901	2,800	2,122	
	Vaughan & TTC Total	28,999	10,318	7,829	635,484	618,621	-2.7%	1,344,858	1,286,286	-4.4%	28,604	10,439	6,076	

* Route crosses municipal boundaries.

	YRT Route #	Route Name	2013			TOTAL BOARDINGS (MONTH)			TOTAL BOARDINGS (YEAR TO DATE)			2014			
			Avg Wkdy Boardings	Avg Sat Boardings	Avg Sn/Hol Boardings	2013	2014	Percentage ('14 vs '13)	2013	2014	Percentage ('14 vs '13)	Avg Wkdy Boardings	Avg Sat Boardings	Avg Sn/Hol Boardings	
Richmond Hill	80	Elgin Mills	-	-	-	-	11,810	-	-	23,123	-	542	207	128	Implemented June 30, 2013 due to Route 90 restructuring
	81	Inspiration	261	-	-	4,968	4,229	-14.9%	9,296	8,789	-5.5%	222	-	-	Impact due to colder temperature
	82	Valleymede	441	-	-	8,405	7,065	-15.9%	16,705	13,833	-17.2%	371	-	-	Impact due to colder temperature
	83	Trench	1,063	110	-	20,695	20,126	-2.7%	40,257	39,723	-1.3%	1,057	-	-	Stable ridership
	84	Oak Ridges	216	18	-	4,194	4,446	6.0%	7,815	8,349	6.8%	228	24	-	Route restructured February 2013; Route 84A branch discontinued
	85 ^[1]	16th Ave/Rutherford	4,438	2,109	1,299	99,906	66,683	-33.3%	210,807	133,787	-36.5%	2,897	1,503	1,043	Route restructured June 30, 2013; Ridership migration to Route 16 and Route 244
	86	Weldrick-Newkirk	937	186	-	18,597	19,167	3.1%	35,689	38,838	8.8%	955	245	-	General growth in the Red Maple area as a result of route restructuring in July 2012; ridership migration from Route 87
	87 ^[1]	Langstaff Local	876	90	-	17,067	8,013	-53.0%	33,593	17,012	-49.4%	420	-	-	Route restructured June 30, 2013; Ridership migration to Route 26, Route 85 and Route 86
	88/88A/88E ^[1]	Bathurst/Bathurst Express	3,932	2,272	1,892	94,017	91,521	-2.7%	198,411	191,956	-3.3%	3,763	2,404	1,933	Decreased student travel to Seneca King Campus; Impact due to colder temperature
	589/590	RH Community Bus	160	137	162	4,407	3,854	-12.5%	8,827	7,510	-14.9%	135	147	138	Impact due to colder temperature
	90/90B ^[1]	Leslie	3,758	1,003	515	78,413	63,313	-19.3%	163,592	132,114	-19.2%	3,007	914	453	Route restructured June 30, 2013; Ridership migration to Route 80; Impact due to colder temperature; Decreased student travel to Seneca
	91/91A/91B/91E ^[1]	Bayview/Express	4,110	1,629	1,002	90,199	86,957	-3.6%	190,144	175,220	-7.8%	3,983	1,457	1,031	Decreased employment travel; Impact due to colder temperature
	240	Mill Pond GO Shuttle	161	-	-	3,071	2,341	-23.8%	6,083	4,965	-18.4%	123	-	-	Impact due to colder temperature
	241	Bev. Acres GO Shuttle	92	-	-	1,750	1,292	-26.2%	3,601	2,876	-20.1%	68	-	-	Impact due to colder temperature
	242	N. Richvale GO Shuttle	35	-	-	672	648	-3.6%	1,578	1,352	-14.3%	34	-	-	Impact due to colder temperature
243	Redstone GO Shuttle	214	-	-	4,081	3,617	-11.4%	8,565	7,805	-8.9%	190	-	-	Impact due to colder temperature	
244	Beaver Creek Shuttle	-	-	-	-	972	-	-	1,898	-	51	-	-	Implemented June 30, 2013 as a result of Route 85 restructuring	
	Richmond Hill Total	20,694	7,554	4,870	450,442	396,054	-12.1%	934,963	809,150	-13.5%	18,046	6,901	4,726		
Aurora	31 ^[1]	Aurora North	117	-	-	2,227	1,886	-15.3%	4,236	3,860	-8.9%	99	-	-	Impact due to colder temperature
	32	Aurora South	607	30	-	11,707	9,780	-16.5%	22,284	19,308	-13.4%	508	21	-	Impact due to colder temperature
	33/33A	Wellington	527	110	-	10,543	9,675	-8.2%	20,900	20,292	-2.9%	482	120	-	Route restructured June 30, 2013; Ridership migration to Route 54
	Aurora Total	1,251	140	-	24,477	21,341	-12.8%	47,420	43,460	-8.4%	1,089	141	-		
Newmarket, East Gwill., Georgina	44	Bristol	316	65	-	6,286	5,615	-10.7%	12,294	11,346	-7.7%	277	83	-	Impact due to colder temperature
	50	Queensway	997	568	407	23,591	22,750	-3.6%	50,732	49,161	-3.1%	946	592	412	Stable ridership
	51	Keswick Local	214	31	-	4,224	4,033	-4.5%	8,261	7,952	-3.7%	202	37	-	Stable ridership
	52 ^[1]	Holland Landing	239	121	-	5,049	4,357	-13.7%	11,053	9,388	-15.1%	207	100	-	Services converted to Dial-a-Ride after 7 p.m. Monday to Saturday effective April 21, 2013
	54 ^[1]	Bayview	446	101	-	8,930	7,939	-11.1%	18,066	16,000	-11.4%	389	117	-	Impact due to colder temperature
	55/55B	Davis Drive	1,105	561	308	24,944	22,363	-10.3%	51,957	45,397	-12.6%	985	503	297	vivaNext construction occurring along Davis Drive; Impact due to colder temperature
	56	Gorham-Eagle	464	164	134	10,219	10,397	1.7%	20,654	21,808	5.6%	451	290	122	General corridor growth; Ridership migration from Route 55/55B
	57/57A	Mulock	1,006	309	194	21,480	18,848	-12.3%	41,850	38,614	-7.7%	865	314	210	Impact due to colder temperature
	58	Mount Albert	125	-	-	2,395	2,123	-11.4%	4,979	4,456	-10.5%	111	-	-	Route restructured April 21, 2013 - Sharon branch discontinued; Impact due to colder temperature
	59	The ROC	7	23	2	136	-	-	494	-	-	-	-	-	Route discontinued March 2013
	98 ^[1]	Yonge	747	489	404	18,280	16,493	-9.8%	37,565	33,698	-10.3%	678	489	313	General corridor decrease
	222	Aurora-Nwmkt GO Shuttle	67	-	-	1,278	1,160	-9.2%	2,494	2,395	-4.0%	61	-	-	Impact due to colder temperature
223	Newmarket GO Shuttle	18	-	-	343	382	11.4%	788	779	-1.1%	20	-	-	Stable ridership	
520/521	Newmarket Community Bus	85	21	16	1,794	1,806	0.7%	3,458	3,555	2.8%	85	25	14	Stable ridership	
	Newmarket Total	5,836	2,453	1,465	128,949	118,267	-8.3%	264,645	244,548	-7.6%	5,277	2,550	1,368		
	YRT SUB-TOTAL	74,814	25,685	17,446	1,620,994	1,564,954	-3.5%	3,392,085	3,239,163	-4.5%	72,404	25,768	15,812		
Viva	blue (incl. blue'A) ^{[1][2]}	Yonge Corridor	18,300	11,246	8,115	445,683	428,096	-3.9%	956,961	887,305	-7.3%	17,674	11,563	8,487	General corridor decrease; Decreased travel to/from Finch GO Bus Terminal
	purple ^{[1][2]}	Highway 7 Corridor	7,447	4,216	3,011	177,559	185,994	4.8%	389,252	404,753	4.0%	8,005	4,385	3,105	Stable ridership; rapidway opening (Bayview to Hwy 404) August 18, 2013; Increased travel to Seneca Markham
	green ^{[1][2]}	Markham North-South Link	741	-	-	14,411	13,643	-5.3%	30,060	28,702	-4.5%	707	-	-	Stable Ridership
	orange (incl. Zum) ^{[1][2]}	Vaughan North-South Link	2,716	1,189	780	60,739	48,973	-19.4%	131,341	105,185	-19.9%	2,294	697	450	Route restructured June 30, 2013; Service to Downsview Subway Station during non-rush hours discontinued
	pink ^{[1][2]}	Finch - Unionville	2,120	-	-	41,230	48,168	16.8%	86,124	99,324	15.3%	2,532	-	-	Rapidway opening (Bayview to Hwy 404) August 18, 2013
	Viva SUB-TOTAL	31,324	16,651	11,906	739,622	724,874	-2.0%	1,593,738	1,525,269	-4.3%	31,212	16,645	12,042		

[1] Route crosses municipal boundaries.

[2] Viva ridership data adjustment is derived on a monthly basis, and compensates for temporary malfunctions of on-board automatic passenger counter (APC) equipment, and/or for drivers not logging onto Init APC system.

Tot. Boardings	YRT/VIVA SYSTEM TOTAL	106,138	42,336	29,352	2,360,616	2,289,828	-3.0%	4,985,823	4,764,432	-4.4%	103,616	42,413	27,854
----------------	-----------------------	---------	--------	--------	-----------	-----------	-------	-----------	-----------	-------	---------	--------	--------

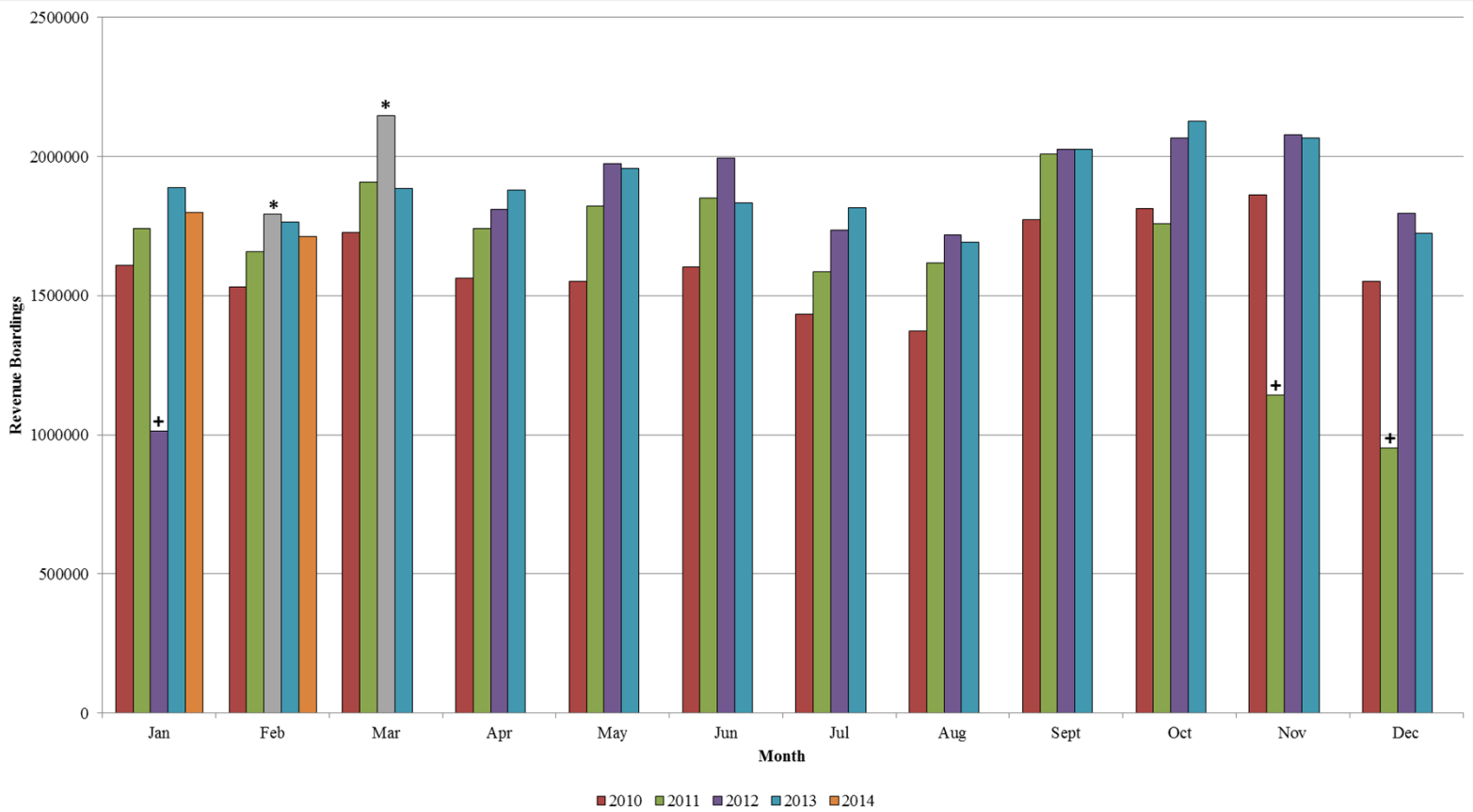
Rev. Boardings	YRT/VIVA SYSTEM TOTAL				1,765,195	1,712,672	-3.0%	3,699,917	3,512,068	-5.1%	77,499		
----------------	-----------------------	--	--	--	-----------	-----------	-------	-----------	-----------	-------	--------	--	--

Notes: 1. System-wide transfer rate = Revenue Boardings / Total Boardings = 25.2%

YRT/Viva

2014 Revenue Ridership Summary (Actual)

Conventional and BRT services including contracted TTC services north of Steeles Avenue



* February & March 2012 estimated revenue ridership due to free transit service.

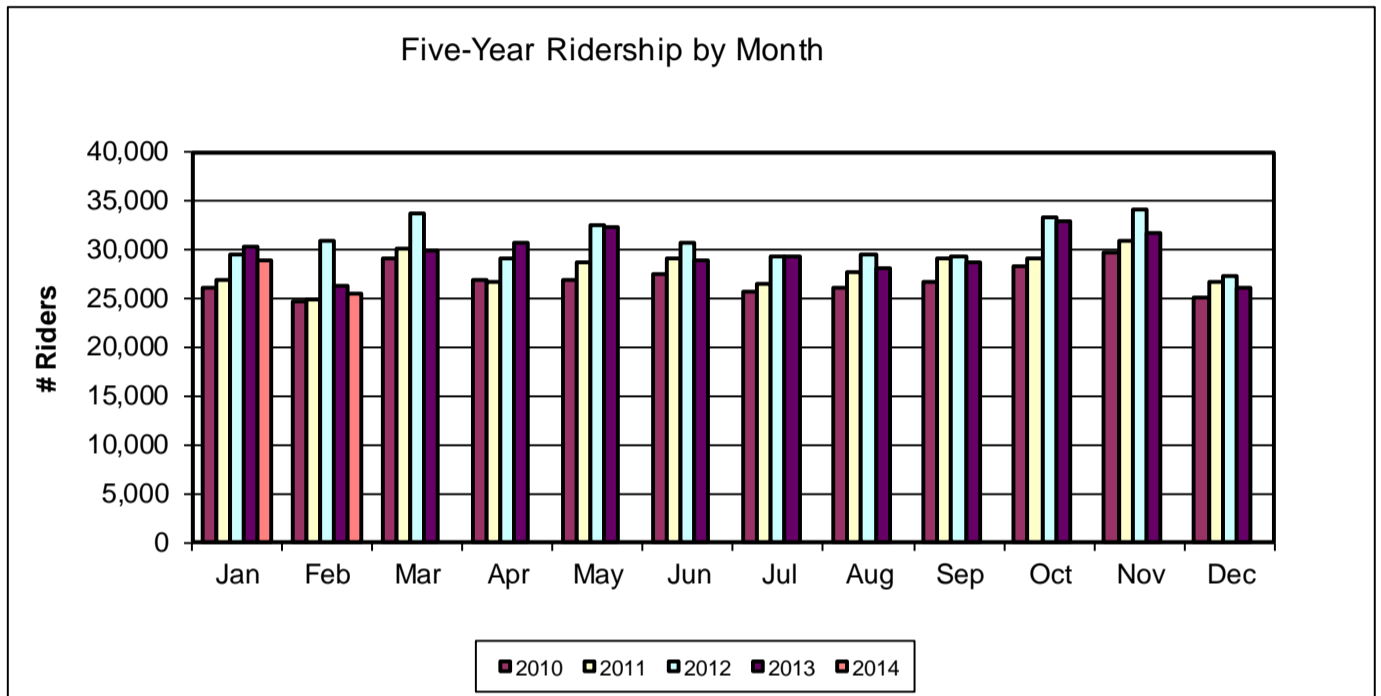
+ Monthly ridership numbers from November 2011 to January 2012 are based on Veolia Transportation, TTC, and Dial-a-Ride services, due to operator strike from October 24, 2011 to February 3, 2012.

Month	2013	2014	Monthly Change ['14 vs '13]	Year to Date (YTD) Change	Average Weekday Revenue Ridership 2014
January	1,934,722	1,799,396	-7.0	-7.0	71,683
February	1,765,195	1,712,612	-3.0	-5.1	77,499
March	1,886,106				
April	1,879,088				
May	1,957,405				
June	1,832,425				
July	1,816,294				
August	1,692,340				
September	2,027,509				
October	2,126,852				
November	2,067,646				
December	1,724,030				
YTD Total	22,709,612	3,512,008			

YRT/Viva

2014 Ridership Summary (Actual)

Specialized Services – Mobility Plus



Month	2013 Ridership	2014 Ridership	Monthly Change ('14 vs. '13)	Year to Date (YTD) Change	Average Weekday Revenue Ridership 2014
January	30,327	28,972	-4.5%	-4.5%	935
February	26,199	25,419	-3.0%	-3.78%	1180
March	29,858				
April	30,708				
May	32,308				
June	28,984				
July	29,357				
August	28,111				
September	28,689				
October	32,847				
November	31,636				
December	25,998				
YTD	355,022	54,391			