

MEMORANDUM

TO: Committee of the Whole
FROM: Daniel Kostopoulos, P.Eng.
Commissioner of Transportation and Community Planning
DATE: February 20, 2014
RE: January 2014 York Region Transit (YRT/Viva) Ridership Statistics

This memorandum provides an overview of YRT/Viva ridership statistics for January 2014.

YRT/Viva's January revenue ridership was 1.8 million, representing a decrease of approximately 135,300 revenue riders, or a decrease of 7.0 per cent, compared to January 2013.

Weather

Heavy snowfalls and colder temperatures likely contributed to the lower ridership for January 2014. There was a total snowfall of 48 cm in January 2014, an increase of 25.2 cm compared to 22.8 cm in January 2013^[1]. The mean temperature in January 2014 was -9.3° Celsius, a decrease of 6.3° Celsius when compared to -3° Celsius in January 2013^[1]. There were 15 days in January 2014 requiring winter bus stop maintenance in York Region compared with eight days in January 2013.

Ridership in January 2014 decreased during days with extreme cold temperatures and heavy snowfalls. For the week of January 19, 2014, York Region experienced six days with mean temperature below -10° Celsius and one day of snowfall. During this week, ridership showed a 14 per cent decrease when compared to the previous week, where there was one day of snowfall and mean temperature above -10° Celsius.

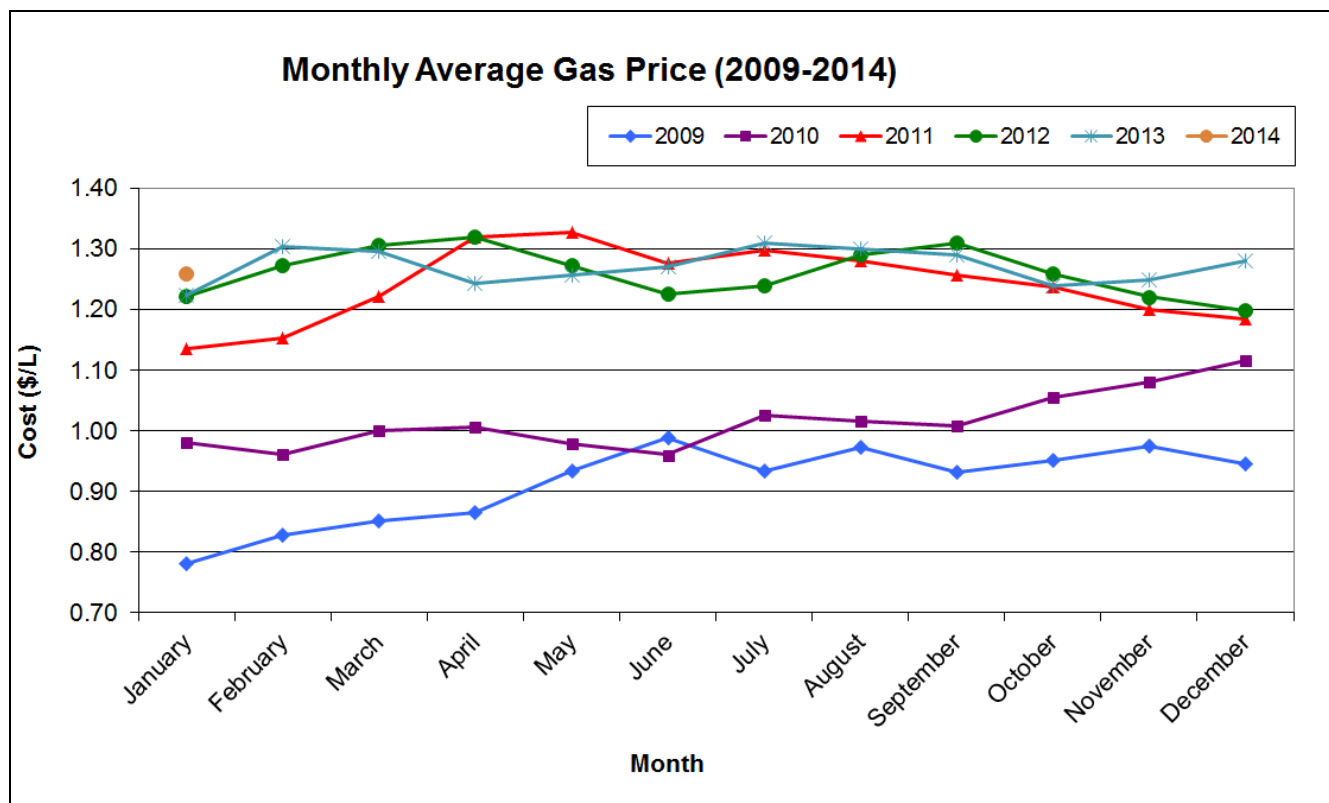
Employment

The national unemployment rate in January 2014 was 7.0 per cent, which is the same as in January 2013^[2]. York Region is located within the Employment Insurance Economic Region of Toronto which recorded an unemployment rate of 8.4 per cent in January 2014, which is the same rate as in January 2013^[3].

Gas Prices

Average gasoline prices increased from \$1.22 per litre in January 2013^[4] to \$1.26 per litre in January 2014^[5], an increase of \$0.04 per litre.

Figure 1: Gas Prices between January 2009 and January 2014



Mobility Plus

Mobility Plus ridership decreased from 29,727 in January 2013 to 28,972 in January 2014, a decrease of 2.5 per cent. In January 2014, Mobility Plus experienced an increase in cancellations over January 2013. Mobility Plus experienced a 26.7 per cent cancellation rate in January 2014 compared to 22.8 per cent January 2013. This can be attributed to colder average monthly temperatures in January 2014 (-9.3°C) compared to average monthly temperatures in January 2013 (-3°C)^[1].

Daniel Kostopoulos, P.Eng.
 Commissioner of Transportation and Community Planning

Notes:

- [1] Historical Climate Data, Toronto Buttonville Airport, Ontario. Retrieved from <http://climate.weather.gc.ca/>. Retrieved date February 7, 2014.
- [2] Labour Force Survey, December 2013, Statistics Canada. Retrieved from <http://www.statcan.gc.ca/subjects-sujets/labour-travail/lfs-epa/lfs-epa-eng.htm>. Retrieved date: February 11, 2014
- [3] EI Economic Region of Toronto – Unemployment Rates for the EI Economic Regions. *Human Resources and Skills Development Canada*. Retrieved from <http://srv129.services.gc.ca/rbin/eng/rates.aspx?id=2013#data>. Retrieved date: February 11, 2014
- [4] Fuel Price Data. (2012). *Ministry of Energy*. Retrieved from <http://www.energy.gov.on.ca/en/fuel-prices/fuel-price-data/?fuel=reg&yr=2012>. Retrieved date: February 11, 2014
- [5] Fuel Price Data. (2013). *Ministry of Energy*. Retrieved from <http://www.energy.gov.on.ca/en/fuel-prices/fuel-price-data/?fuel=reg&yr=2013>. Retrieved date: February 11, 2014

	YRT Route #	Route Name	2013			TOTAL BOARDINGS (MONTH)			TOTAL BOARDINGS (YEAR TO DATE)			2014			
			Avg Wkdy Boardings	Avg Sat Boardings	Avg Sn/Hol Boardings	2013	2014	Percentage ('14 vs '13)	2013	2014	Percentage ('14 vs '13)	Avg Wkdy Boardings	Avg Sat Boardings	Avg Sn/Hol Boardings	
Richmond Hill	80	Elgin Mills	-	-	-	-	11,313	-	-	11,313	-	450	179	128	Implemented June 30, 2013 due to Route 90 restructuring
	81	Inspiration	196	-	-	4,328	4,560	5.4%	4,328	4,560	5.4%	207	-	-	Stable ridership
	82	Valleymede	376	-	-	8,300	6,768	-18.5%	8,300	6,768	-18.5%	307	-	-	Impact due to colder temperature
	83	Trench	870	89	-	19,562	19,597	0.2%	19,562	19,597	0.2%	888	-	-	Stable ridership
	84	Oak Ridges	160	21	-	3,621	3,903	7.8%	3,621	3,903	7.8%	173	20	-	Route restructured Feb 24, 2013; Route 84A branch discontinued
	^[1]	16th Ave/Rutherford	4,296	2,289	1,248	110,901	67,104	-39.5%	110,901	67,104	-39.5%	2,546	1,452	947	Route restructured June 30, 2013; Ridership migration to Route 16 and Route 244
	85	Weldrick-Newkirk	739	188	-	17,092	19,671	15.1%	17,092	19,671	15.1%	852	217	-	General growth in the Red Maple area as a result of route restructuring in July 2012; ridership migration from Route 87
	^[1]	Langstaff Local	734	76	-	16,526	8,999	-45.5%	16,526	8,999	-45.5%	408	-	-	Route restructured June 30, 2013; Ridership migration to Route 26, Route 85 and Route 86
	88/88A/88E ^[1]	Bathurst/Bathurst Express	4,025	2,290	1,149	104,394	100,435	-3.8%	104,394	100,435	-3.8%	3,755	2,046	1,736	Decreased student travel to Seneca King Campus; Impact due to colder temperature
	589/590	RH Community Bus	154	133	100	4,420	3,656	-17.3%	4,420	3,656	-17.3%	121	157	71	Impact due to colder temperature
	^[1]	Leslie	3,569	982	428	85,179	68,801	-19.2%	85,179	68,801	-19.2%	2,881	766	382	Route restructured June 30, 2013; Ridership migration to Route 80; Impact due to colder temperature; Decreased student travel to Seneca
	90/90B 91/91A/91B/91E ^[1]	Bayview/Express	3,983	1,856	979	99,945	88,263	-11.7%	99,945	88,263	-11.7%	3,534	1,326	949	Decreased employment travel; Impact due to colder temperature
	240	Mill Pond GO Shuttle	136	-	-	3,012	2,624	-12.9%	3,012	2,624	-12.9%	119	-	-	Impact due to colder temperature
	241	Bev. Acres GO Shuttle	84	-	-	1,851	1,584	-14.4%	1,851	1,584	-14.4%	72	-	-	Impact due to colder temperature
	242	N. Richvale GO Shuttle	41	-	-	906	704	-22.3%	906	704	-22.3%	32	-	-	Impact due to colder temperature
243	Redstone GO Shuttle	203	-	-	4,484	4,188	-6.6%	4,484	4,188	-6.6%	190	-	-	Impact due to colder temperature	
244	Beaver Creek Shuttle	-	-	-	-	926	-	-	-	926	-	42	-	-	Implemented June 30, 2013 as a result of Route 85 restructuring
	Richmond Hill Total	19,566	7,924	3,904	484,521	413,096	-14.7%	484,521	413,096	-14.7%	16,577	6,163	4,213		
Aurora	^[1]	Aurora North	91	-	-	2,009	1,974	-1.7%	2,009	1,974	-1.7%	89	-	-	Stable ridership
	31/32	Aurora South	474	26	-	10,577	9,528	-9.9%	10,577	9,528	-9.9%	427	19	-	Impact due to colder temperature
	33/33A	Wellington	446	116	-	10,357	10,617	2.5%	10,357	10,617	2.5%	460	107	-	Route restructured June 30, 2013; Ridership migration to Route 54
		Aurora Total	1,011	142	-	22,943	22,119	-3.6%	22,943	22,119	-3.6%	976	126	-	
Newmarket, East Gwill., Georgina	44	Bristol	262	53	-	6,008	5,730	-4.6%	6,008	5,730	-4.6%	247	70	-	Stable ridership
	50	Queensway	985	734	434	27,141	26,411	-2.7%	27,141	26,411	-2.7%	1,023	444	331	Stable ridership
	51	Keswick Local	177	22	-	4,037	3,919	-2.9%	4,037	3,919	-2.9%	171	29	-	Stable ridership
	^[1]	Holland Landing	246	135	-	6,004	5,031	-16.2%	6,004	5,031	-16.2%	214	71	-	Services converted to Dial-a-Ride after 7 p.m. Monday to Saturday effective April 21, 2013
	52 ^[1]	Bayview	393	97	-	9,136	8,061	-11.8%	9,136	8,061	-11.8%	342	109	-	Impact due to colder temperature
	54/55B	Davis Drive	1,061	511	272	27,013	23,034	-14.7%	27,013	23,034	-14.7%	904	442	234	vivaNext construction occurring along Davis Drive; Impact due to colder temperature
	56	Gorham-Eagle	417	160	110	10,435	11,410	9.3%	10,435	11,410	9.3%	452	192	126	General corridor growth
	57/57A	Mulock	826	324	148	20,370	19,765	-3.0%	20,370	19,765	-3.0%	803	258	180	Stable ridership
	58	Mount Albert	116	-	-	2,584	2,333	-9.7%	2,584	2,333	-9.7%	105	-	-	Route restructured April 21, 2013 - Sharon branch discontinued; Impact due to colder temperature
	59	The ROC	10	7	5	358	-	-100.0%	358	-	-100.0%	-	-	-	Route discontinued March 2013
	^[1]	Yonge	699	465	383	19,285	17,205	-10.8%	19,285	17,205	-10.8%	656	324	278	General corridor decrease
	98/222	Aurora-Nwmt GO Shuttle	55	-	-	1,216	1,235	1.6%	1,216	1,235	1.6%	56	-	-	Stable ridership
	223	Newmarket GO Shuttle	20	-	-	445	397	-10.8%	445	397	-10.8%	18	-	-	Impact due to colder temperature
	520/521	Newmarket Community Bus	68	27	12	1,664	1,749	5.1%	1,664	1,749	5.1%	72	24	12	Stable ridership
	Newmarket Total	5,335	2,535	1,364	135,696	126,281	-6.9%	135,696	126,281	-6.9%	5,062	1,963	1,161		
	YRT SUB-TOTAL	71,748	26,459	16,075	1,771,091	1,674,209	-5.5%	1,771,091	1,674,209	-5.5%	68,159	24,006	14,991		
Viva ^[2]	(incl. blue/A) ^[1]	Yonge Corridor	19,115	11,776	7,330	511,278	459,209	-10.2%	511,278	459,209	-10.2%	16,632	11,117	7,546	General corridor decrease
	purple ^[1]	Highway 7 Corridor	8,053	4,002	2,833	211,693	218,759	3.3%	211,693	218,759	3.3%	8,446	4,252	2,756	Stable ridership; rapidway opening (Bayview to Hwy 404) August 18, 2013. Increased travel to Seneca Markham.
	green ^[1]	Markham North-South Link	699	-	-	15,649	15,059	-3.8%	15,649	15,059	-3.8%	684	-	-	Stable Ridership. Decreased travel to Seneca Newnham.
	orange (incl. Züm) ^[1]	Vaughan North-South Link	2,748	1,207	763	70,602	56,212	-20.4%	70,602	56,212	-20.4%	2,336	623	436	Route restructured June 30, 2013; Service to Downsview Subway Station during non-rush hours discontinued
	pink ^[1]	Finch - Unionville	2,004	-	-	44,894	51,156	13.9%	44,894	51,156	13.9%	2,324	-	-	Rapidway opening (Bayview to Hwy 404) August 18, 2013
		Viva SUB-TOTAL	32,619	16,985	10,926	854,116	800,395	-6.3%	854,116	800,395	-6.3%	30,422	15,992	10,738	

[1] Route crosses municipal boundaries.

[2] Viva ridership data adjustment is derived on a monthly basis, and compensates for temporary malfunctions of on-board automatic passenger counter (APC) equipment, and/or for drivers not logging onto Init APC system.

Tot. Boardings	YRT/VIVA SYSTEM TOTAL	104,367	43,444	27,001	2,625,207	2,474,604	-5.7%	2,625,207	2,474,604	-5.7%	98,581	39,998	25,729
-----------------------	------------------------------	----------------	---------------	---------------	------------------	------------------	--------------	------------------	------------------	--------------	---------------	---------------	---------------

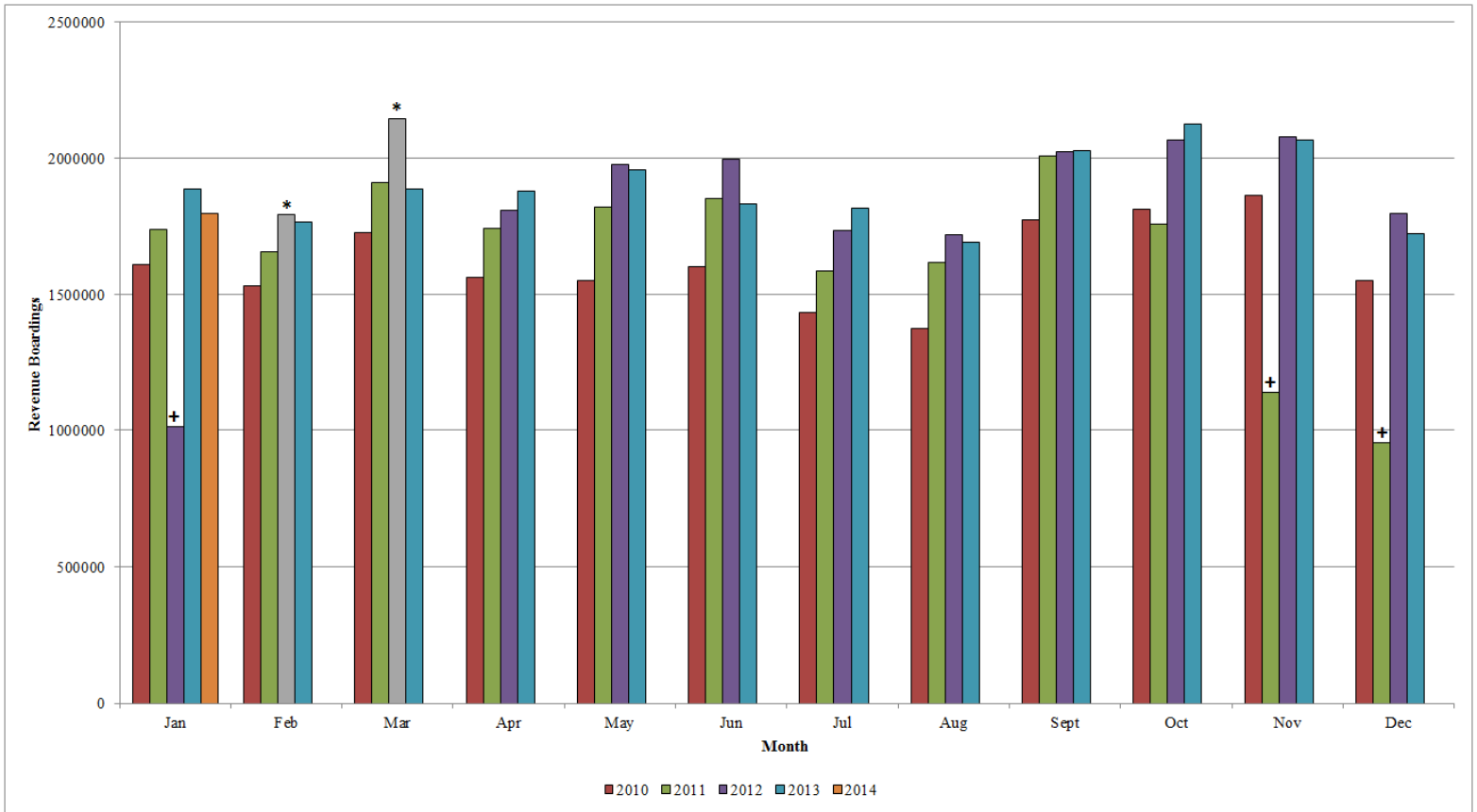
Rev. Boardings	YRT/VIVA SYSTEM TOTAL				1,934,722	1,799,396	-7.0%	1,934,722	1,799,396	-7.0%	71,683		
-----------------------	------------------------------	--	--	--	------------------	------------------	--------------	------------------	------------------	--------------	---------------	--	--

Notes: 1. System-wide transfer rate = Revenue Boardings / Total Boardings **27.3%**

YRT/Viva

2014 Revenue Ridership Summary (Actual)

Conventional and BRT services including contracted TTC services north of Steeles Avenue



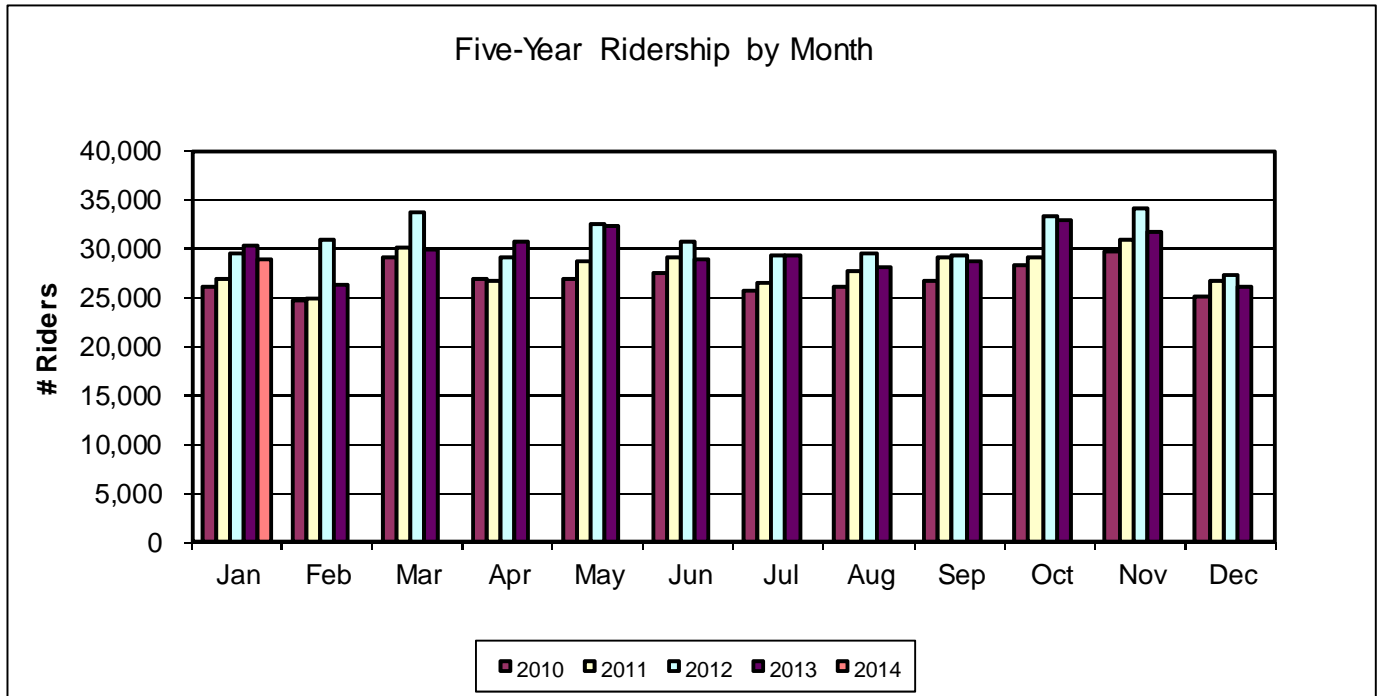
* February & March 2012 forecasted revenue ridership due to free transit service.

+ Monthly ridership numbers from November 2011 to January 2012 are based on Veolia Transportation, TTC, and Dial-a-Ride services, due to operator strike from October 24, 2011 to February 3, 2012.

Month	2013	2014	Monthly Change ['14 vs '13]	Year to Date (YTD) Change	Average Weekday Revenue Ridership 2014
January	1,934,722	1,799,396	-7.0	-7.0	71,683
February	1,765,195				
March	1,886,106				
April	1,879,088				
May	1,957,405				
June	1,832,425				
July	1,816,294				
August	1,692,340				
September	2,027,509				
October	2,126,852				
November	2,067,646				
December	1,724,030				
YTD Total	22,709,612	1,799,396			

YRT/Viva 2014 Ridership Summary (Actual)

Specialized Services – Mobility Plus



Month	2013 Ridership	2014 Ridership	Monthly Change ('14 vs. '13)	Year to Date (YTD) Change	Average Weekday Revenue Ridership 2014
January	30,327	28,972	-4.5%	-4.5%	935
February	26,199				
March	29,858				
April	30,708				
May	32,308				
June	28,984				
July	29,357				
August	28,111				
September	28,689				
October	32,847				
November	31,636				
December	25,998				
YTD	355,022	28,972			