

THE REGIONAL MUNICIPALITY OF YORK

BILL NO. 3

BYLAW NO. 2014-3

A bylaw to amend Bylaw No. R-1310-2002-112
being a bylaw to prescribe maximum rates of speed
on Don Mills Road/Leslie Street/The Queensway (Y.R. 12)

WHEREAS on December 19, 2002, Regional Council enacted Bylaw No. R-1310-2002-112 to prescribe maximum rates of speed on Don Mills Road/Leslie Street/The Queensway (Y.R. 12);

AND WHEREAS Schedule "A" to the said Bylaw sets out the maximum rates of speed as prescribed by Council from time to time;

NOW THEREFORE the Council of The Regional Municipality of York enacts as follows:

1. Bylaw No. R-1310-2002-112 is hereby amended by deleting pages 11, 12, 13 and 15 of Schedule "A" and inserting pages 11, 12, 13 and 15 of the attached Appendix "A".
2. Schedule "A" to Bylaw No. R-1310-2002-112 is hereby consolidated as set out in the attached Appendix "B".

ENACTED AND PASSED on January 23, 2014.

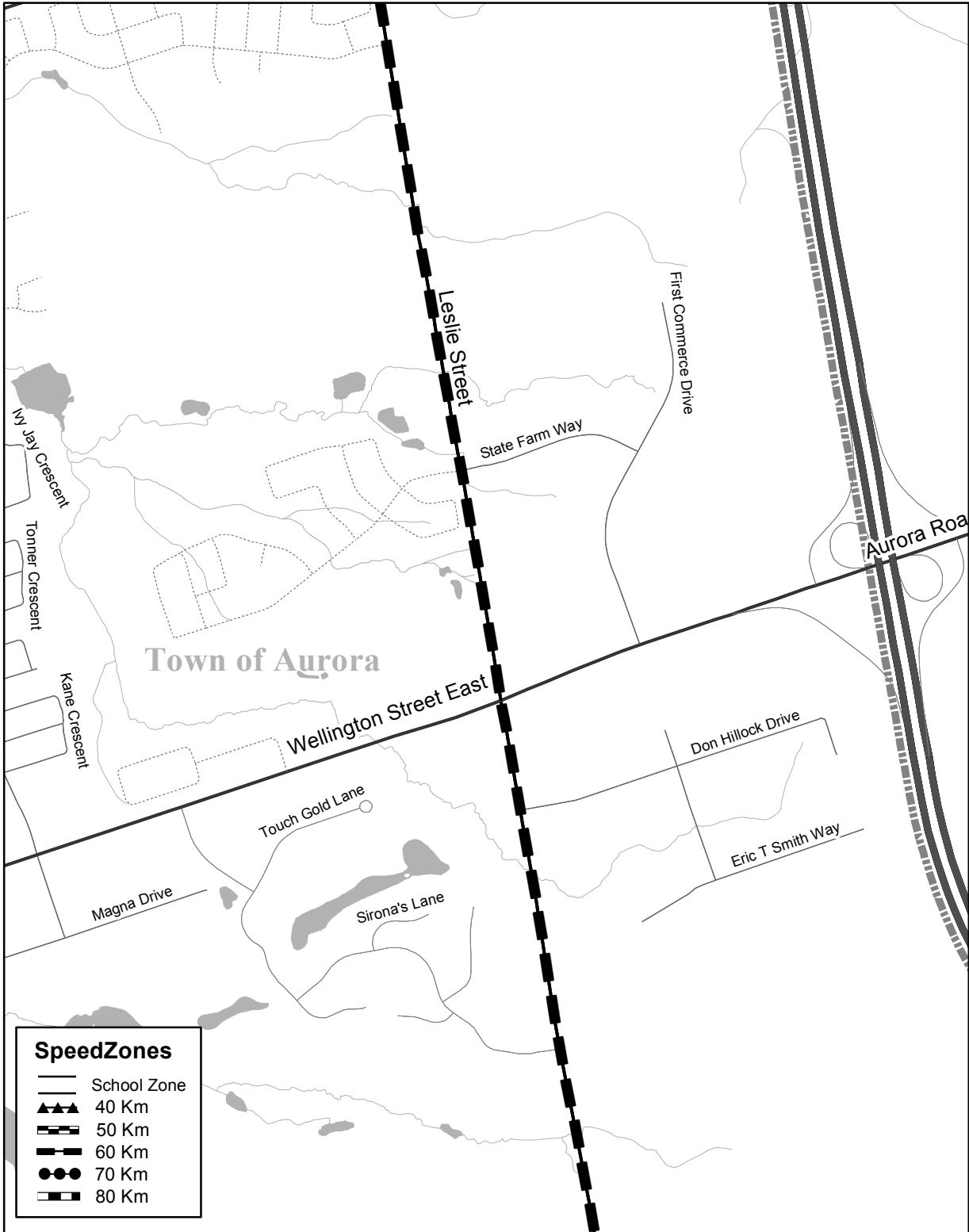
Denis Kelly
Regional Clerk

Bill Fisch
Regional Chair

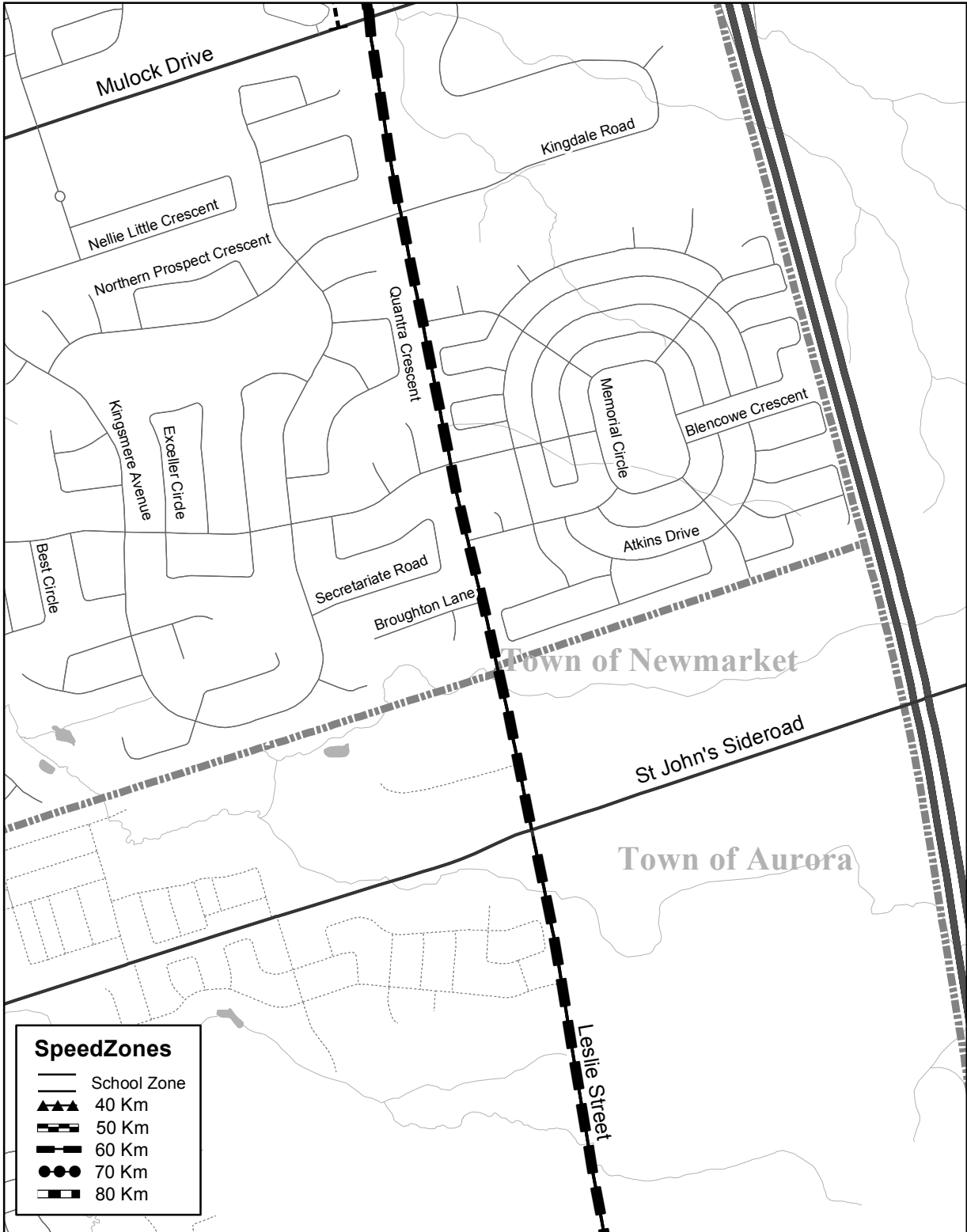
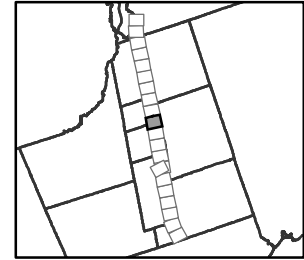
Authorized by Clause 5, Report 1 of the Committee of the Whole, adopted by Regional Council at its meeting on January 23, 2014.



Regional Road #12

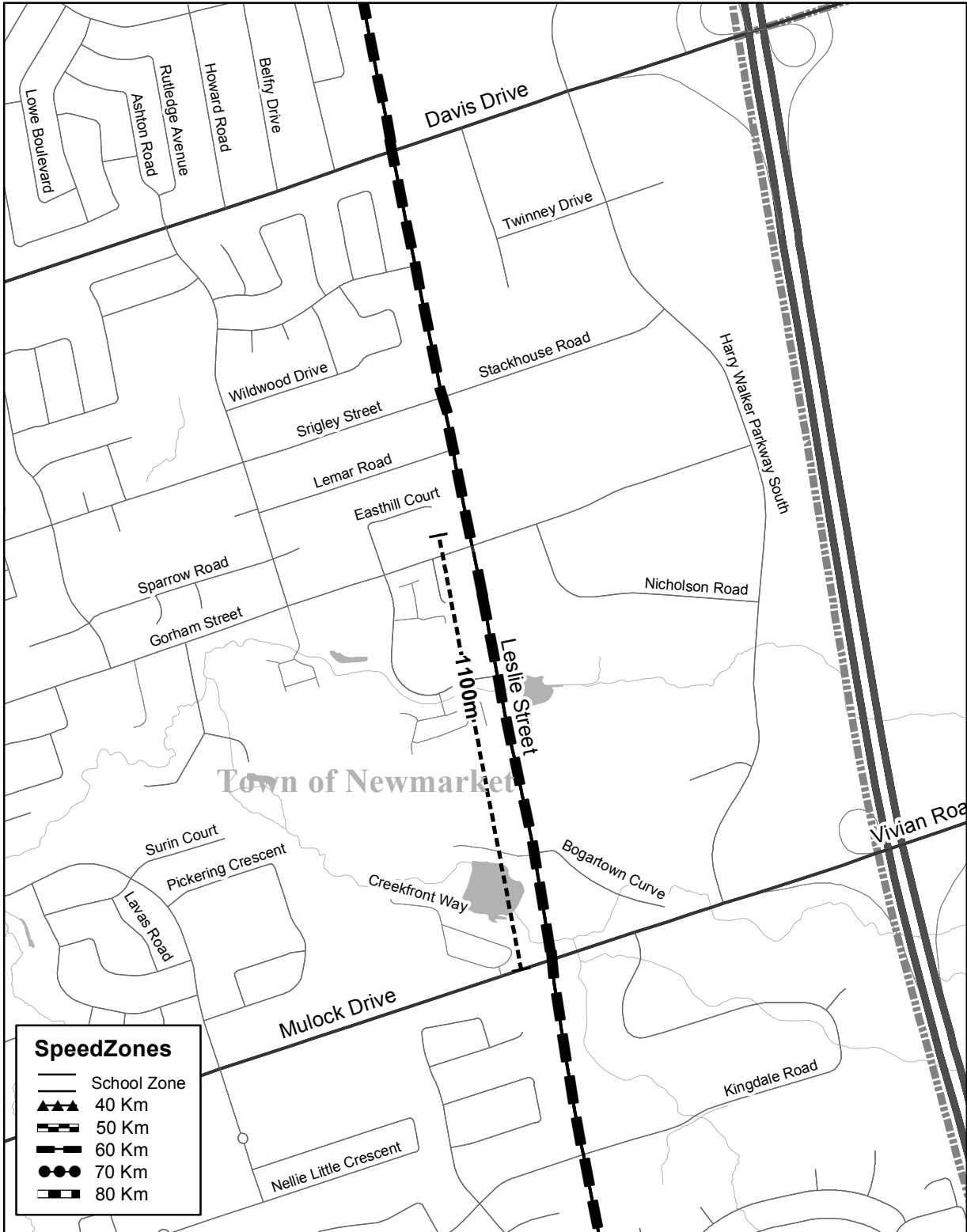


Regional Road #12

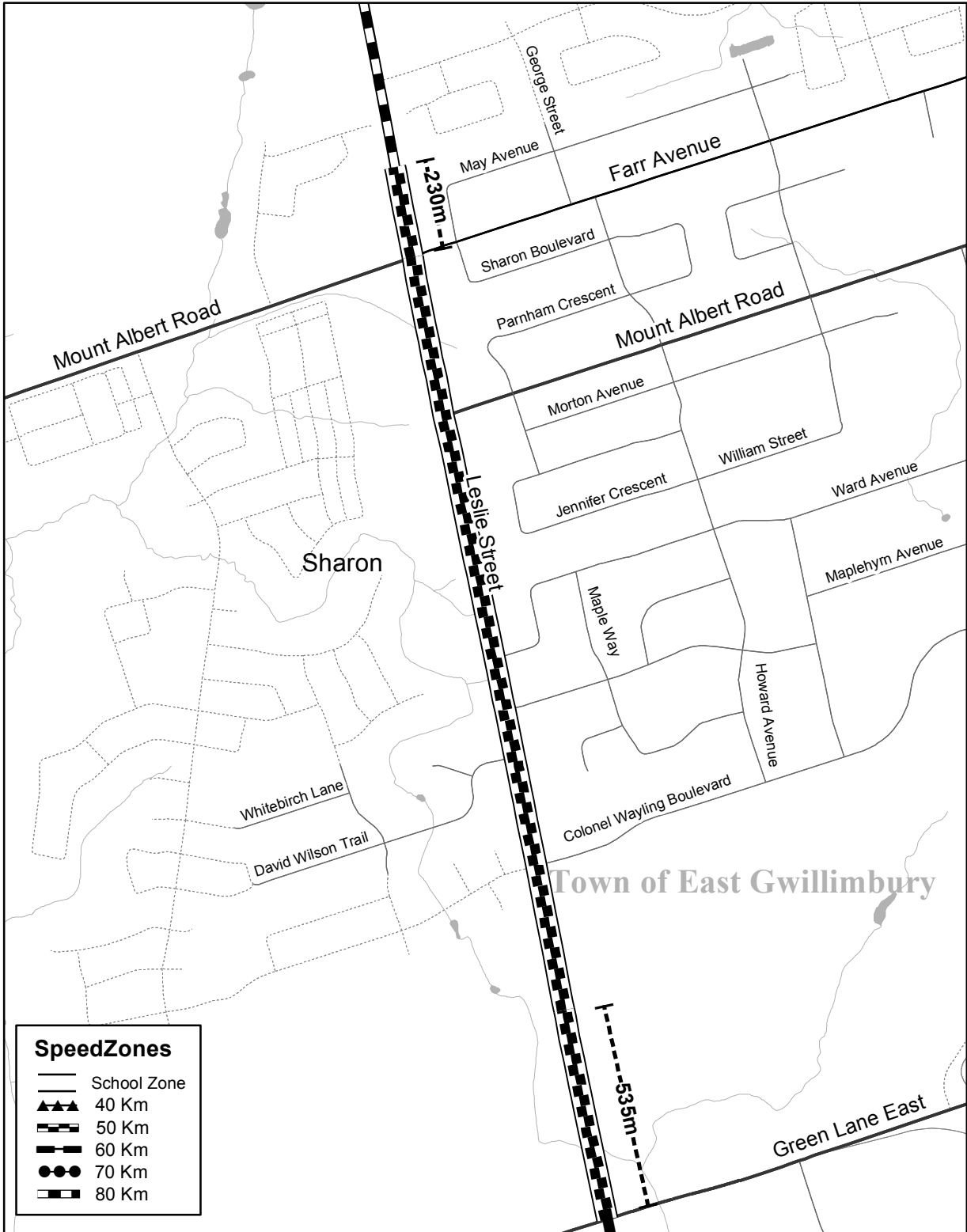


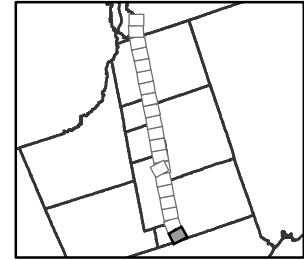
Speed Zones	
	School Zone
	40 Km
	50 Km
	60 Km
	70 Km
	80 Km

Regional Road #12

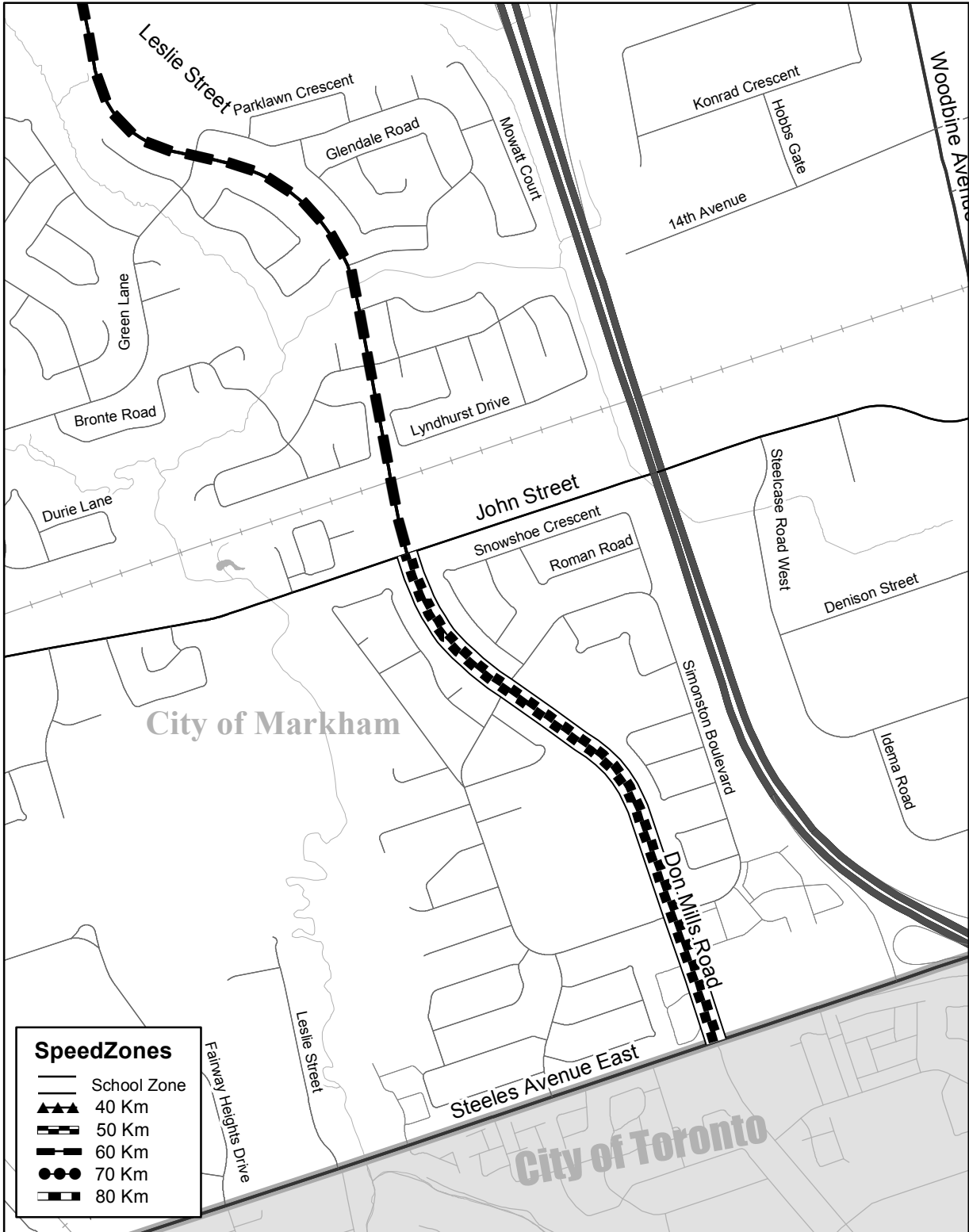


Regional Road #12

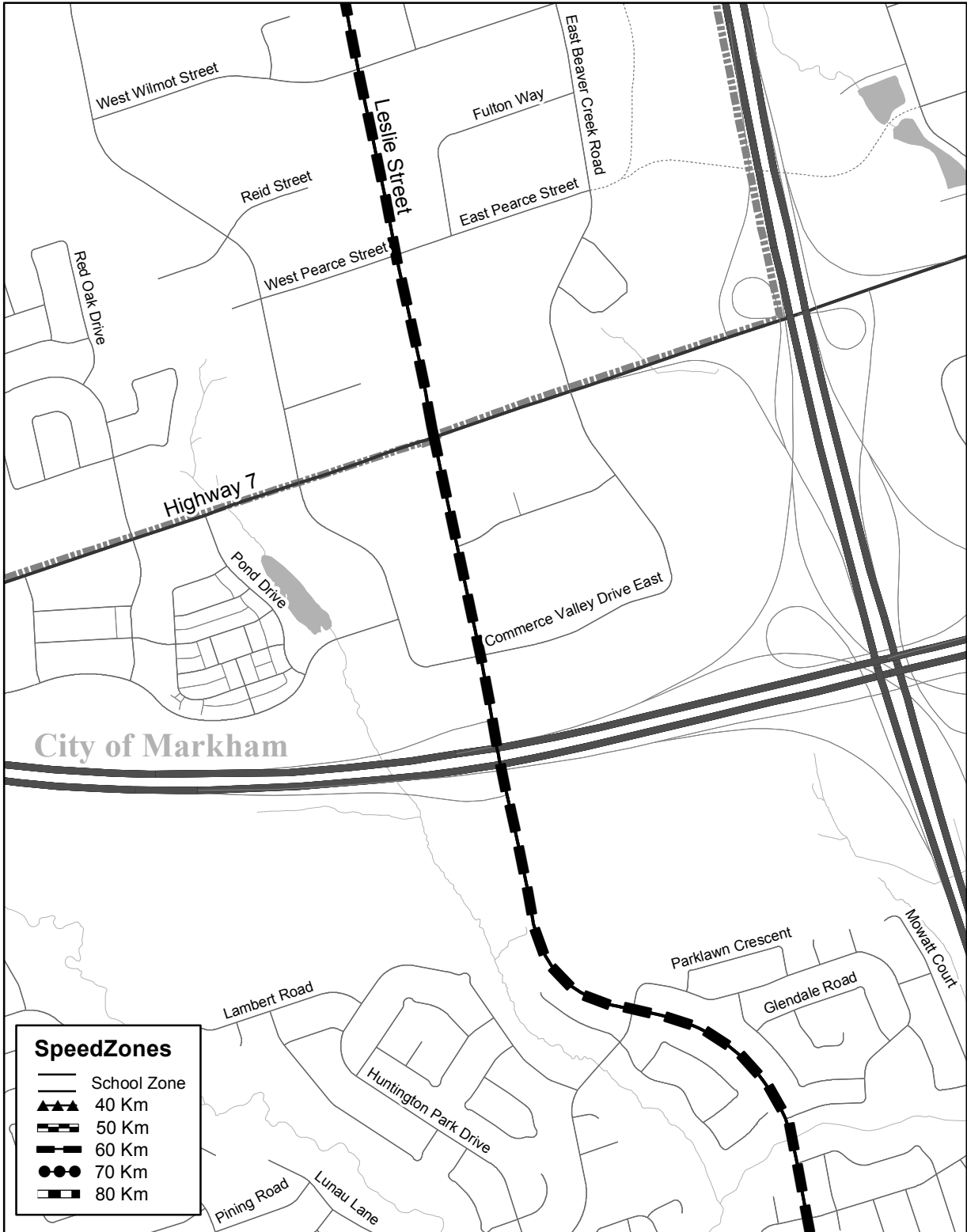




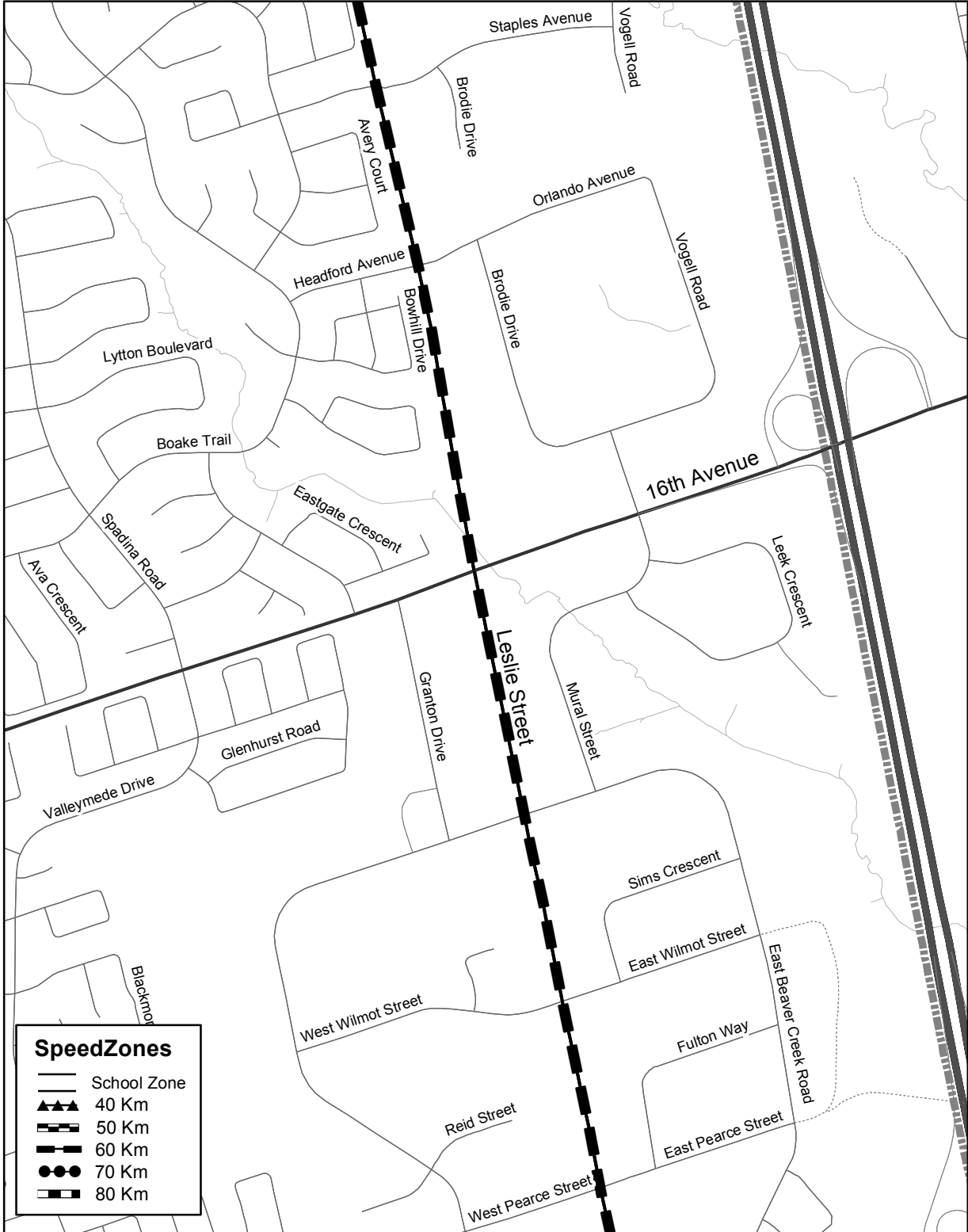
Regional Road #12



Regional Road #12

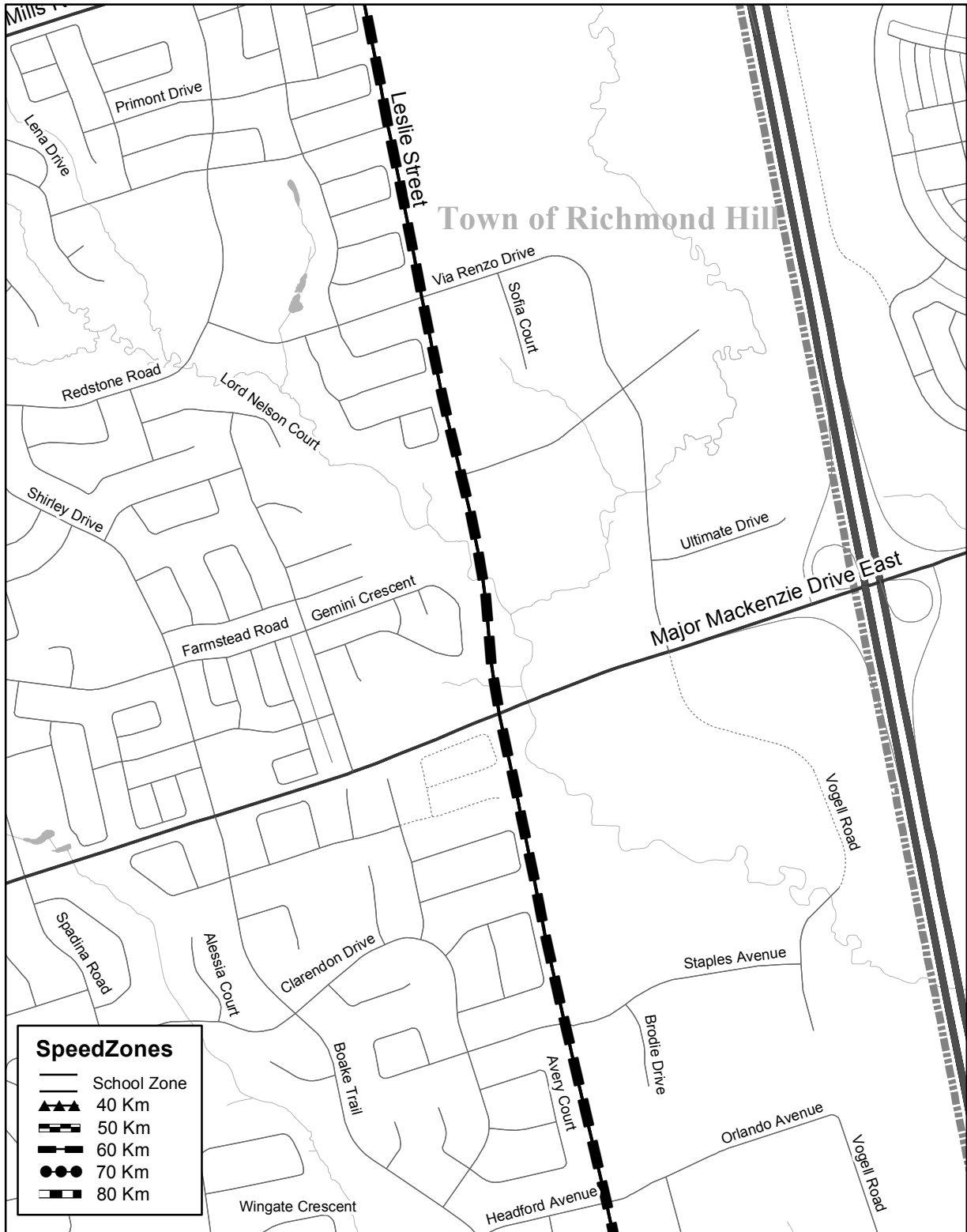


Regional Road #12



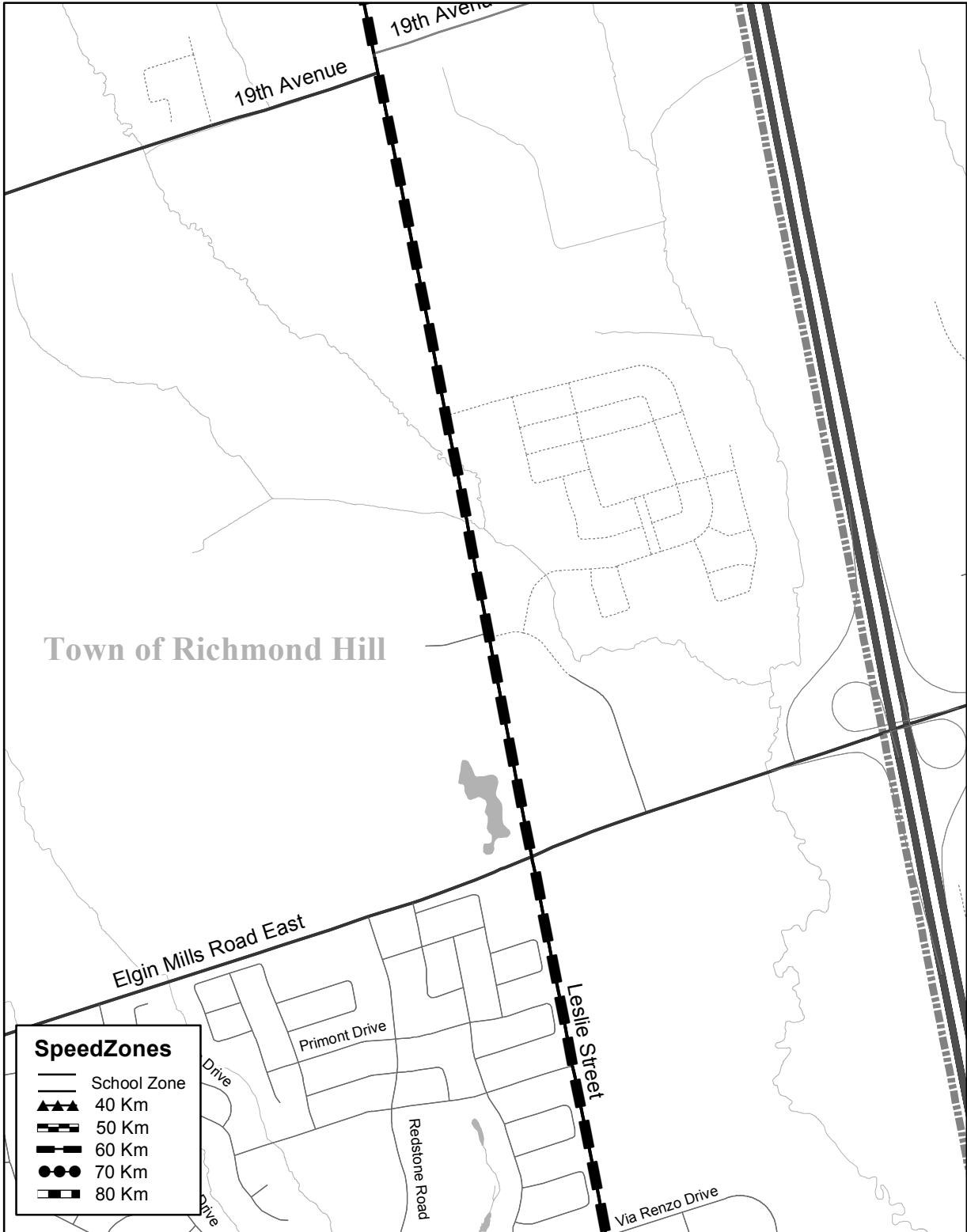


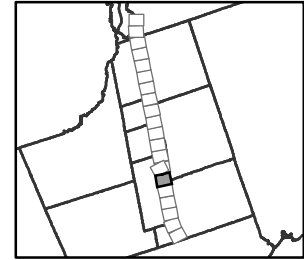
Regional Road #12



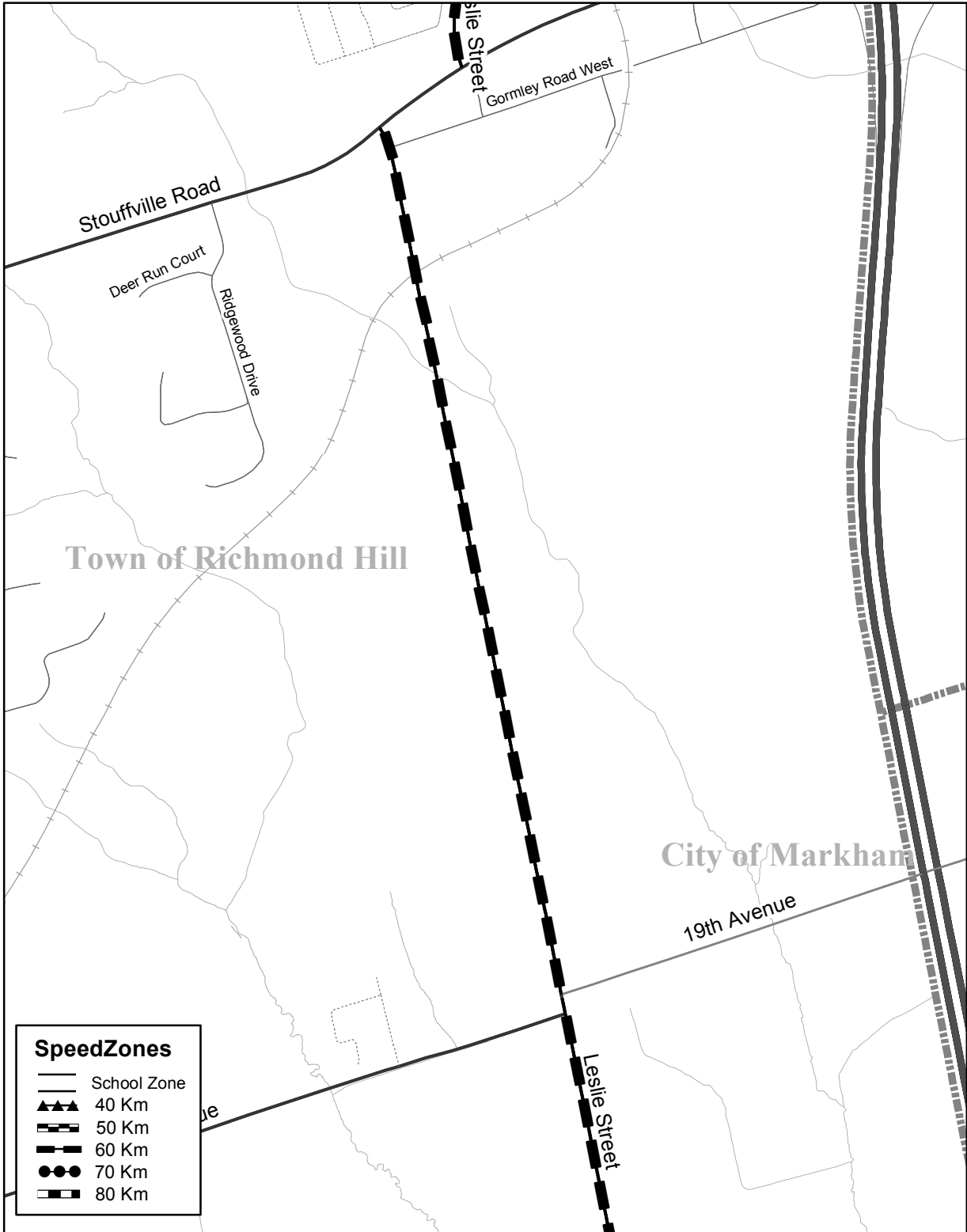


Regional Road #12



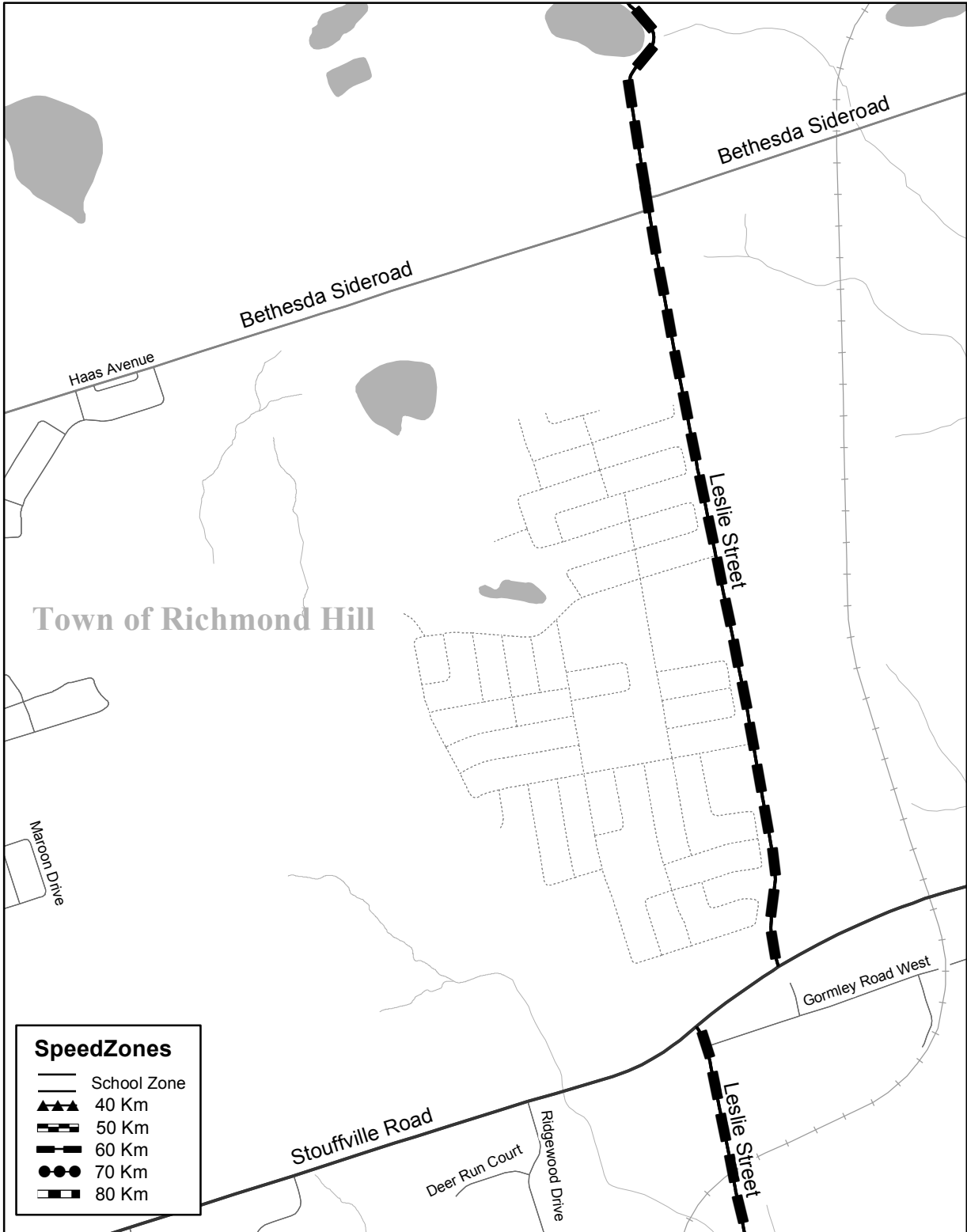


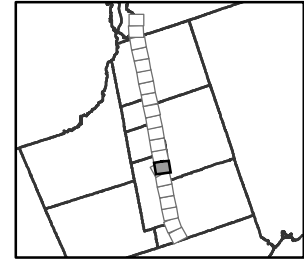
Regional Road #12



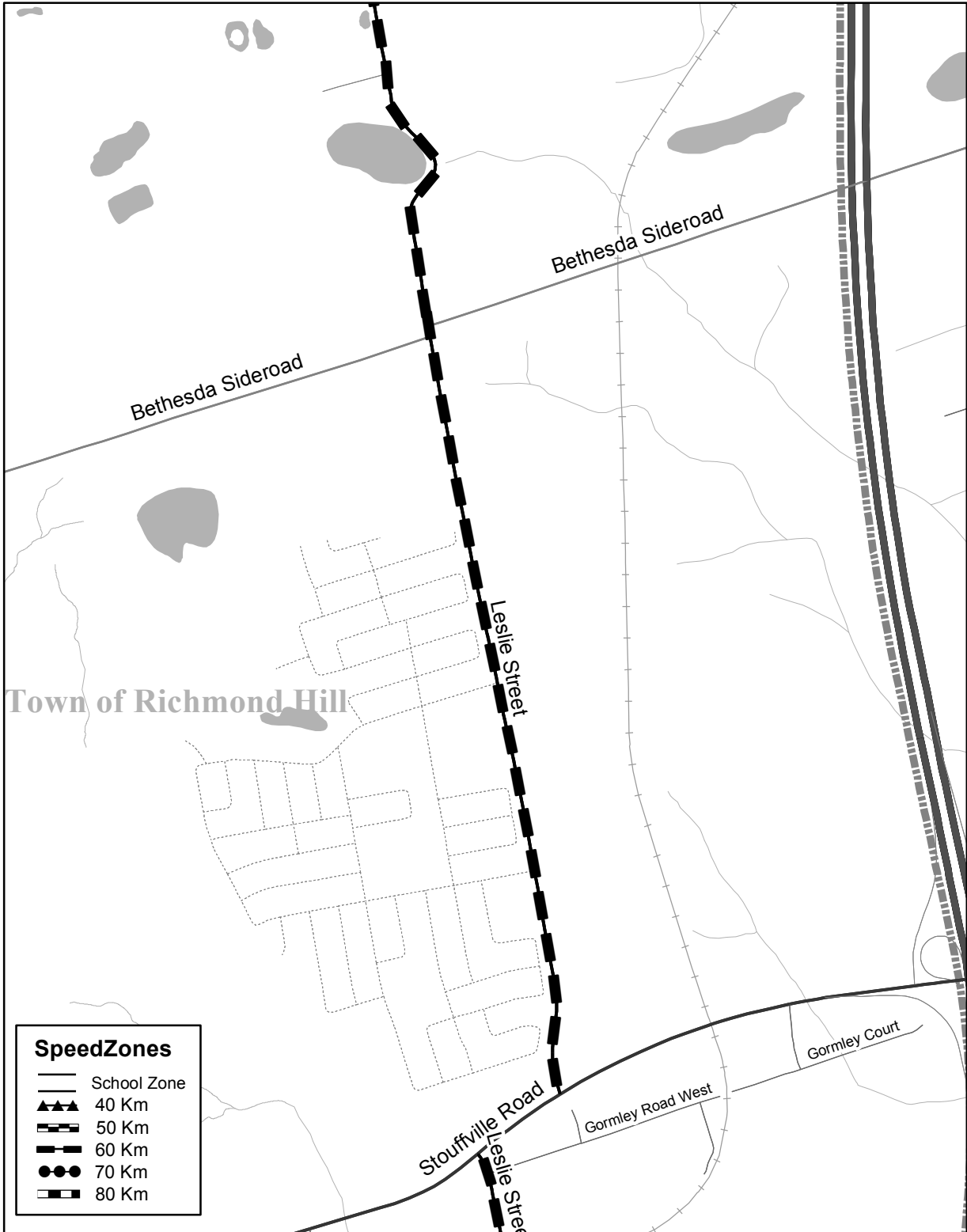


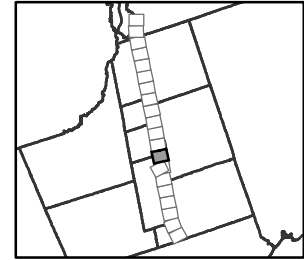
Regional Road #12



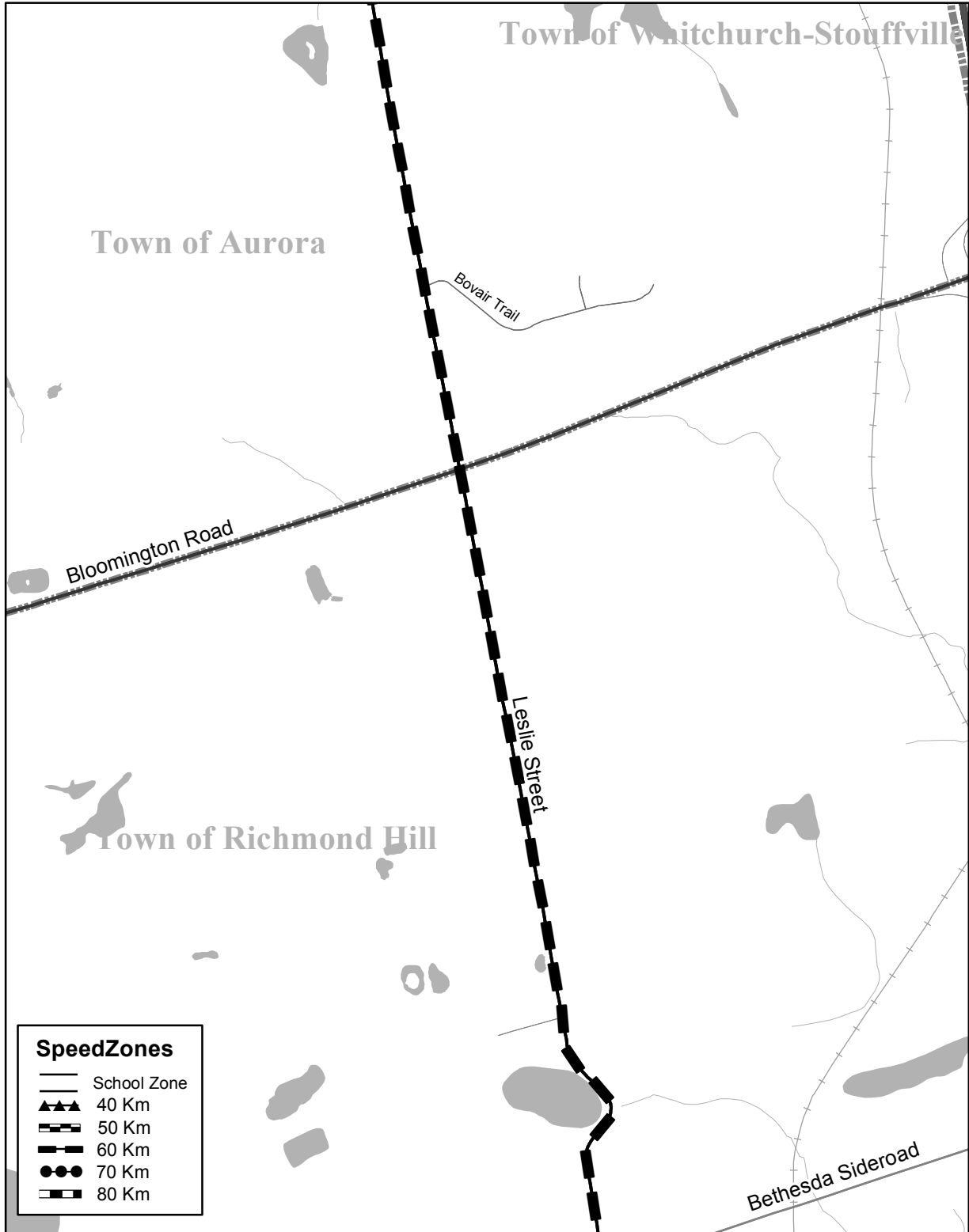


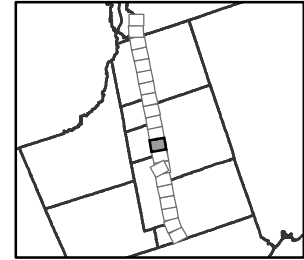
Regional Road #12



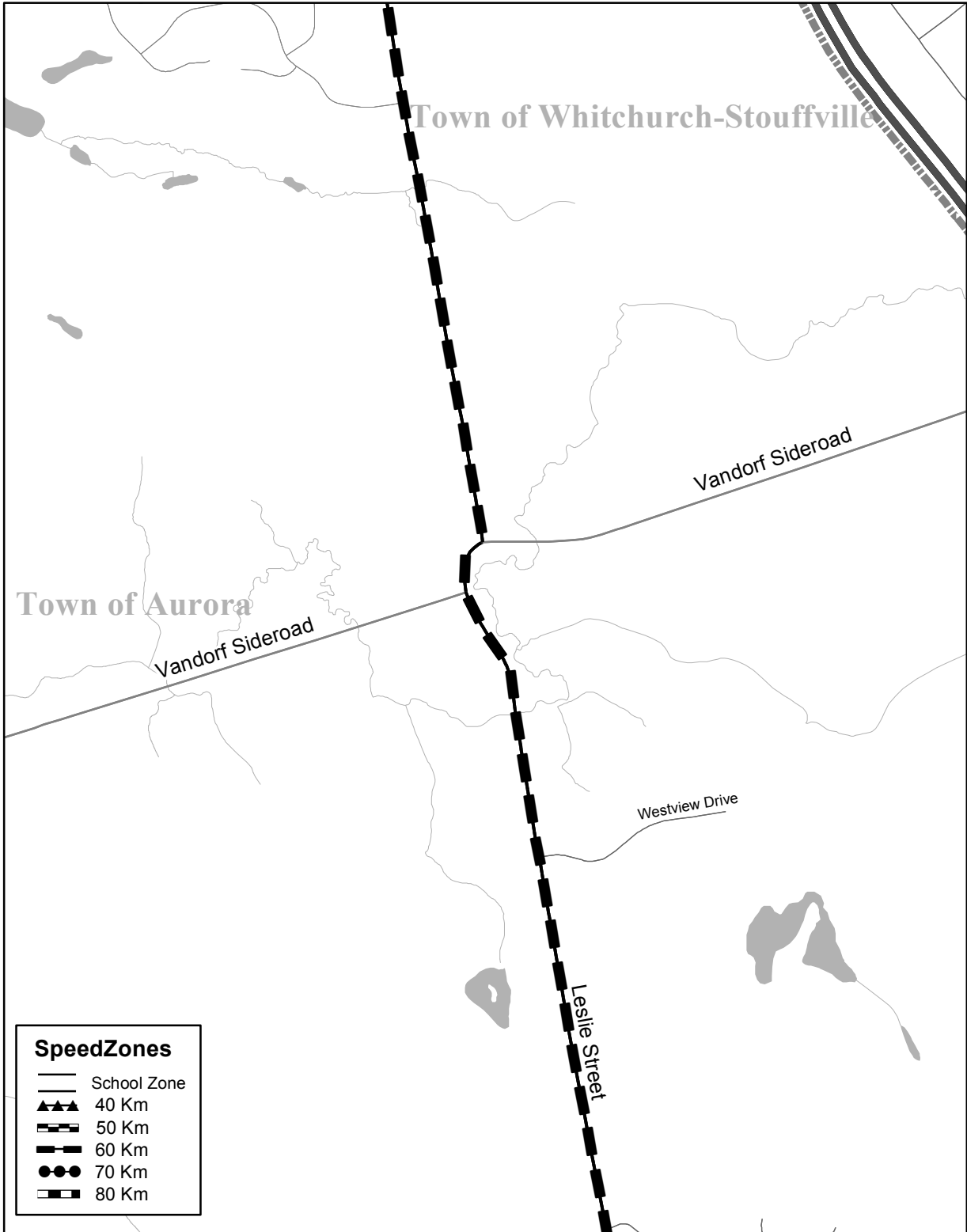


Regional Road #12



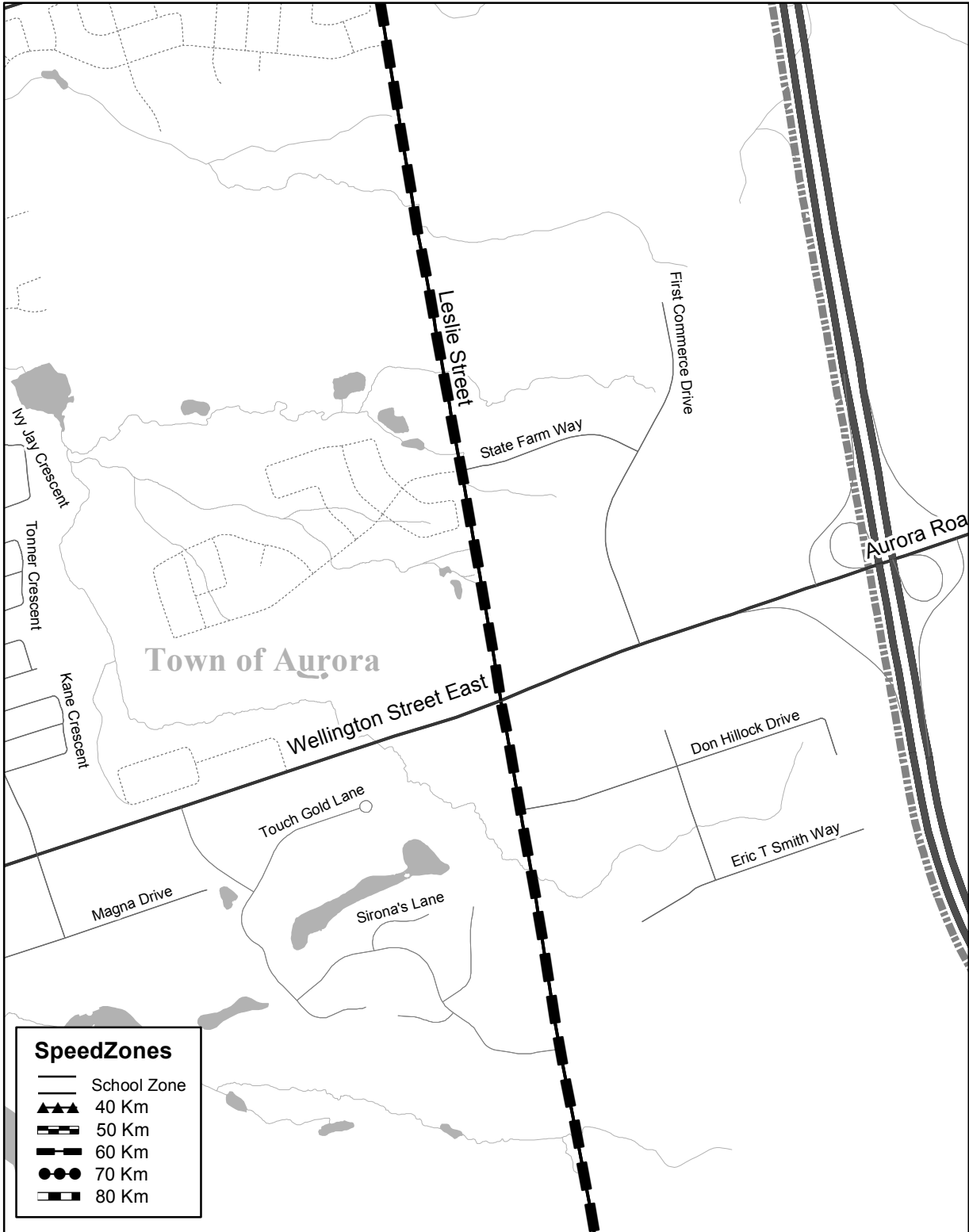


Regional Road #12

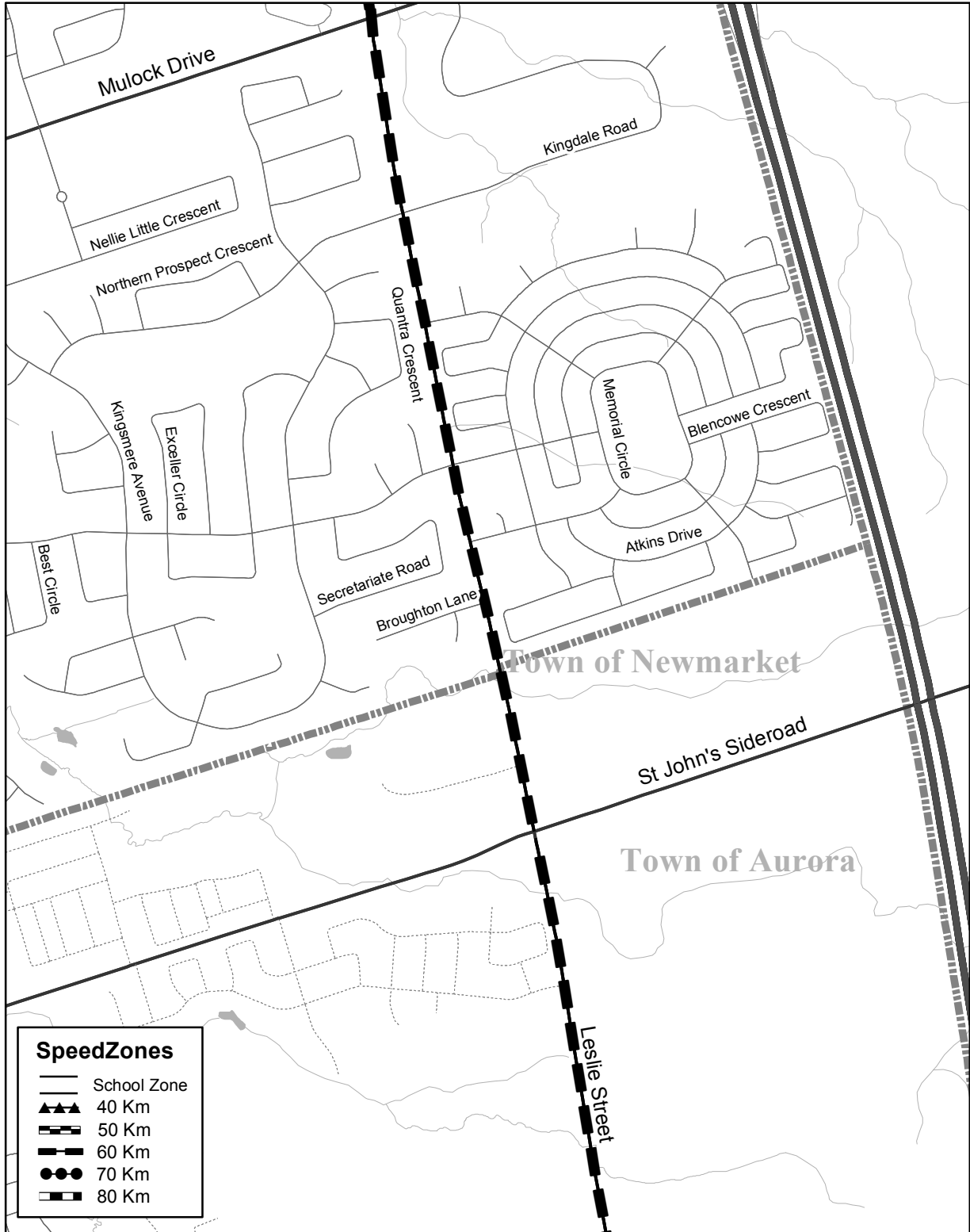
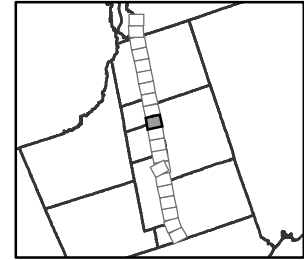




Regional Road #12

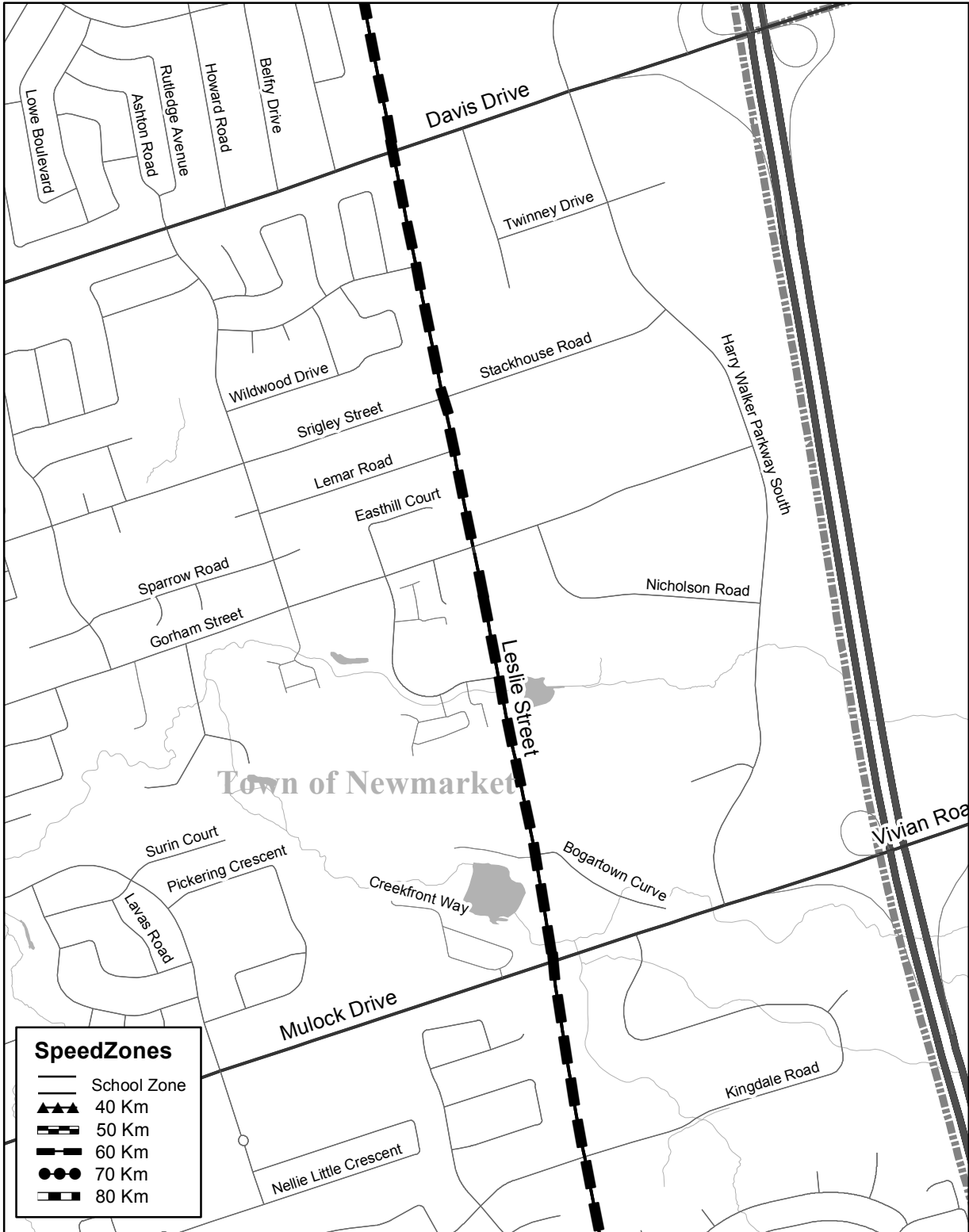


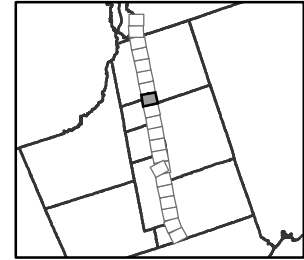
Regional Road #12



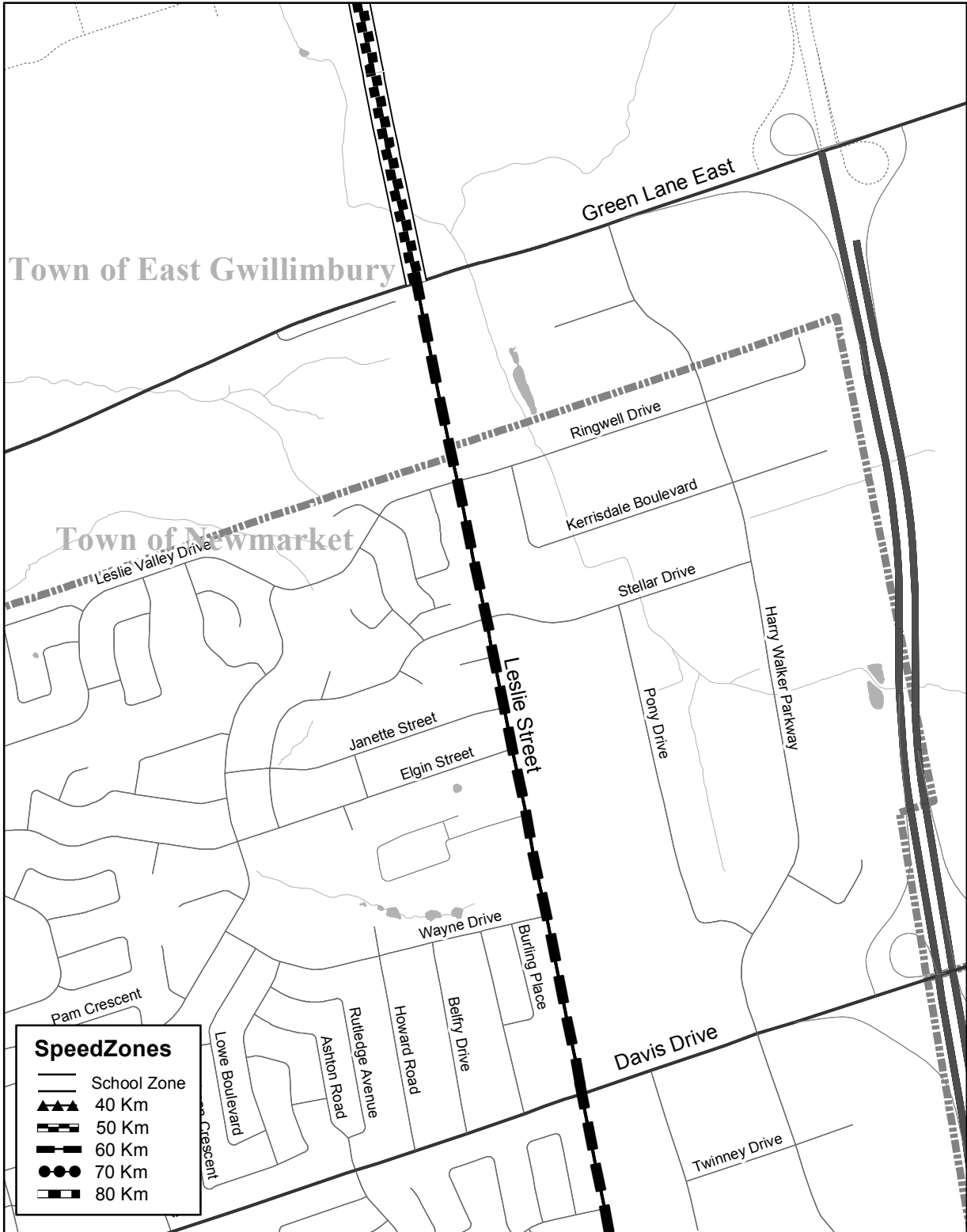


Regional Road #12

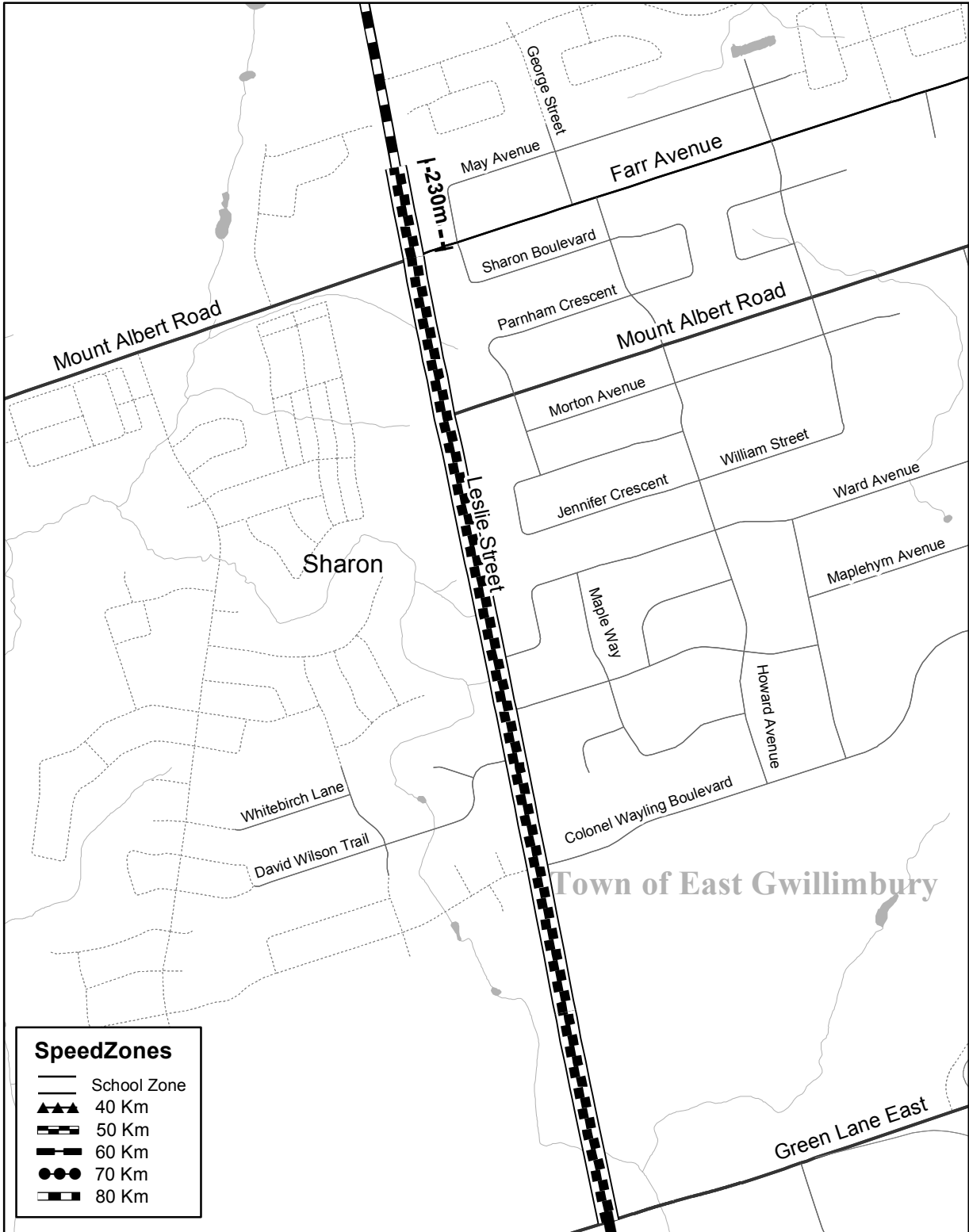




Regional Road #12

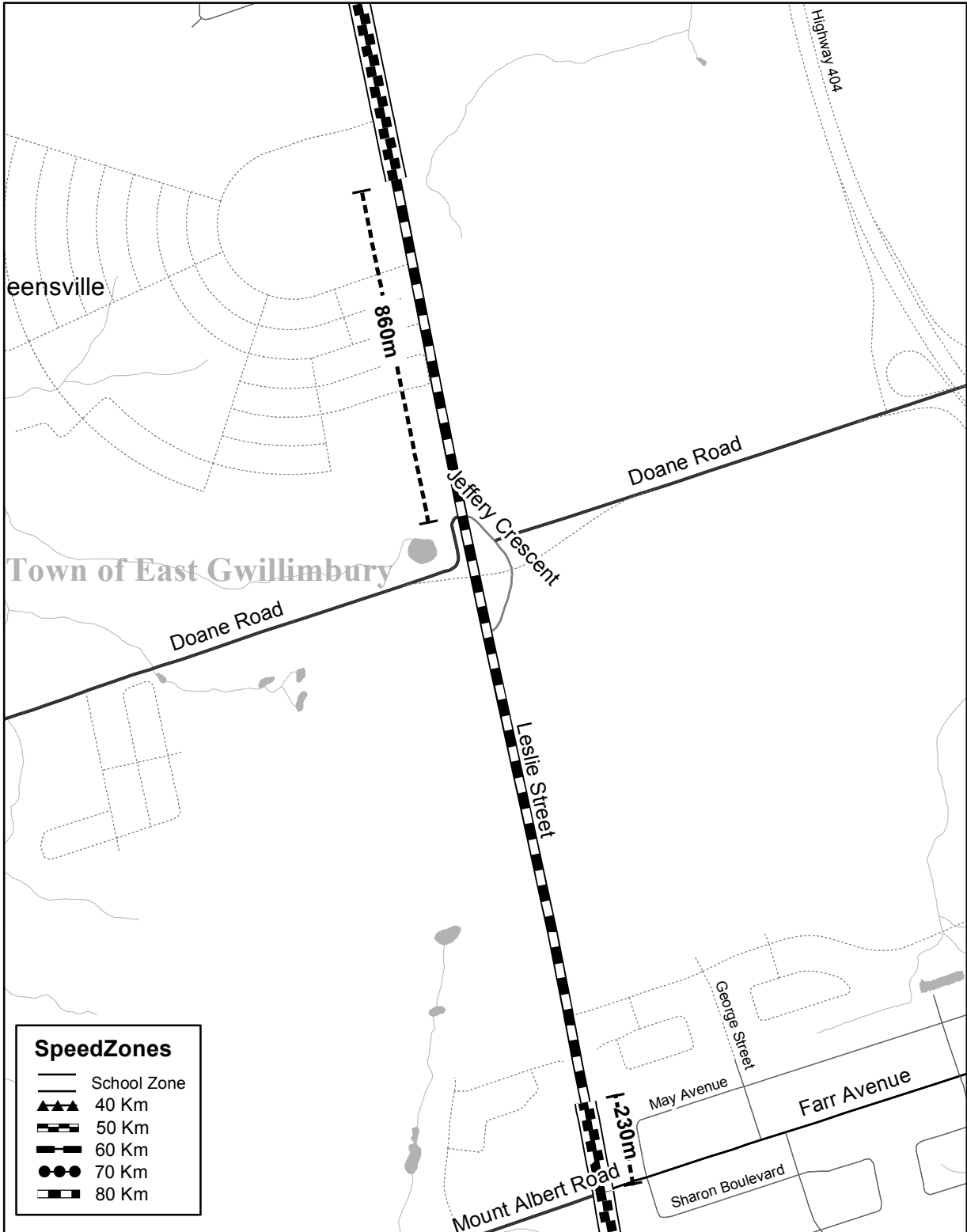


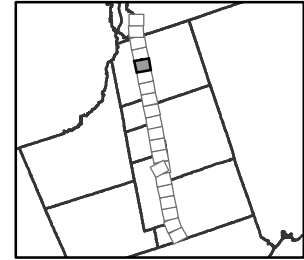
Regional Road #12



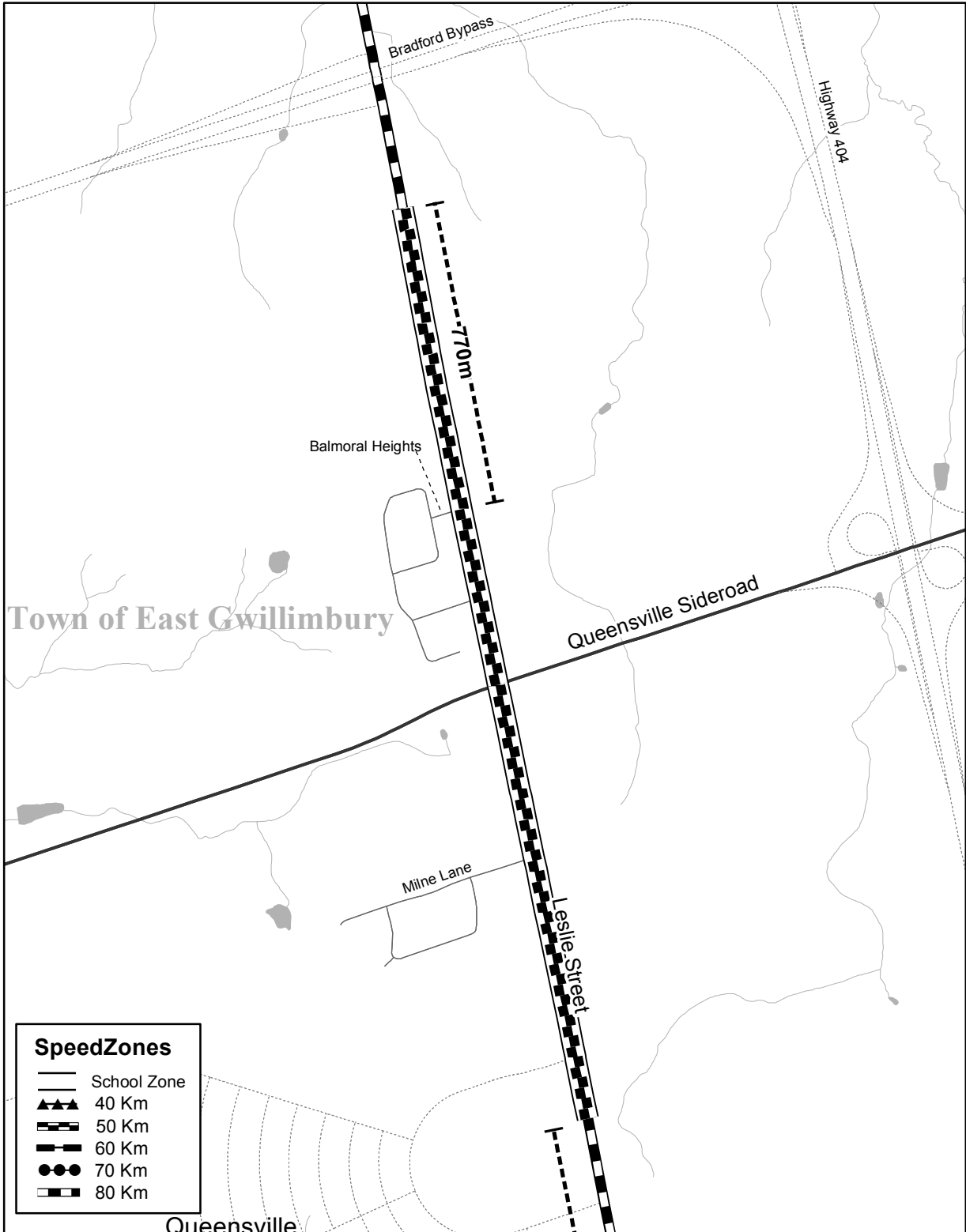


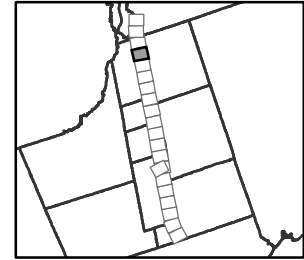
Regional Road #12



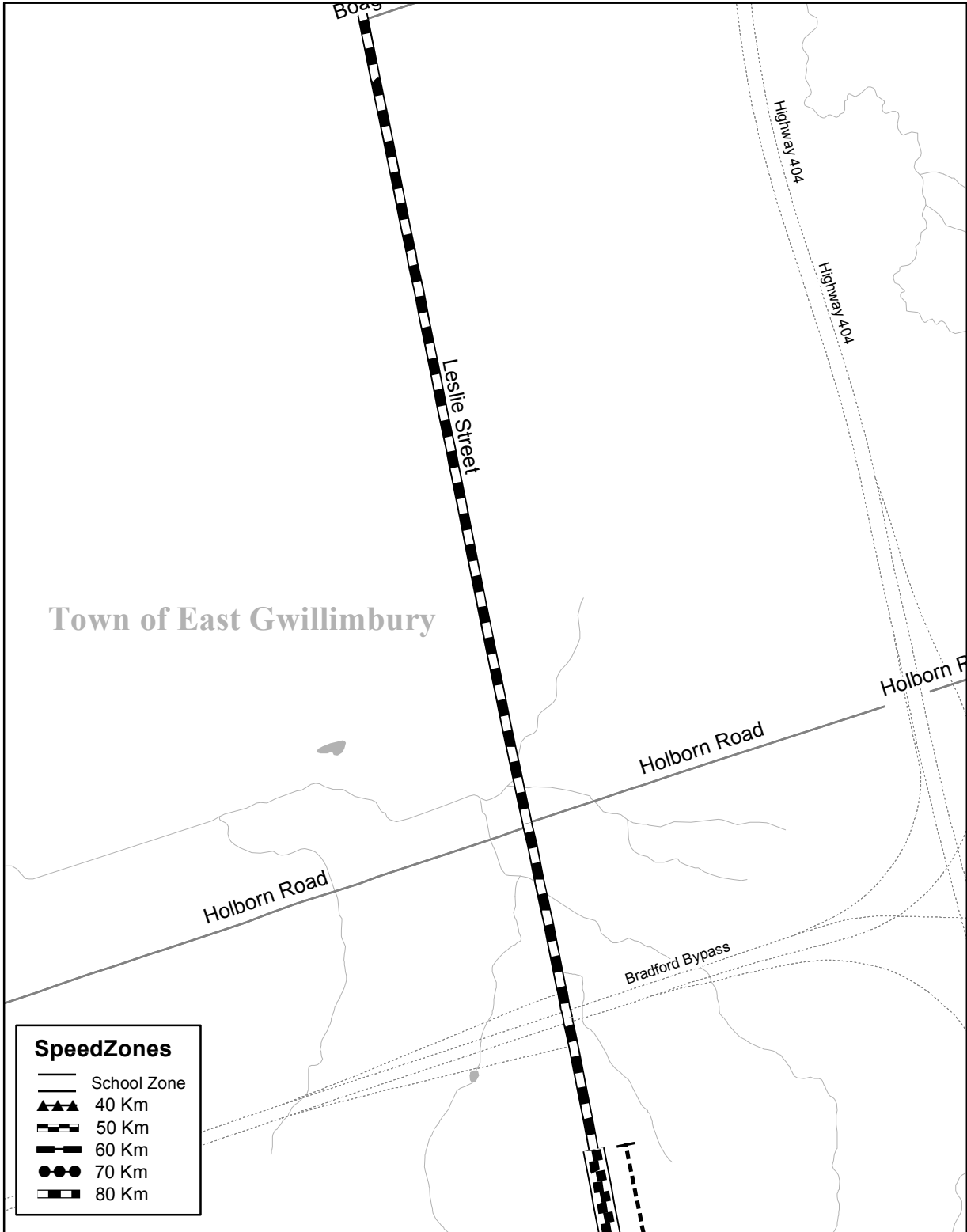


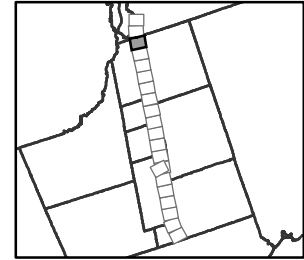
Regional Road #12



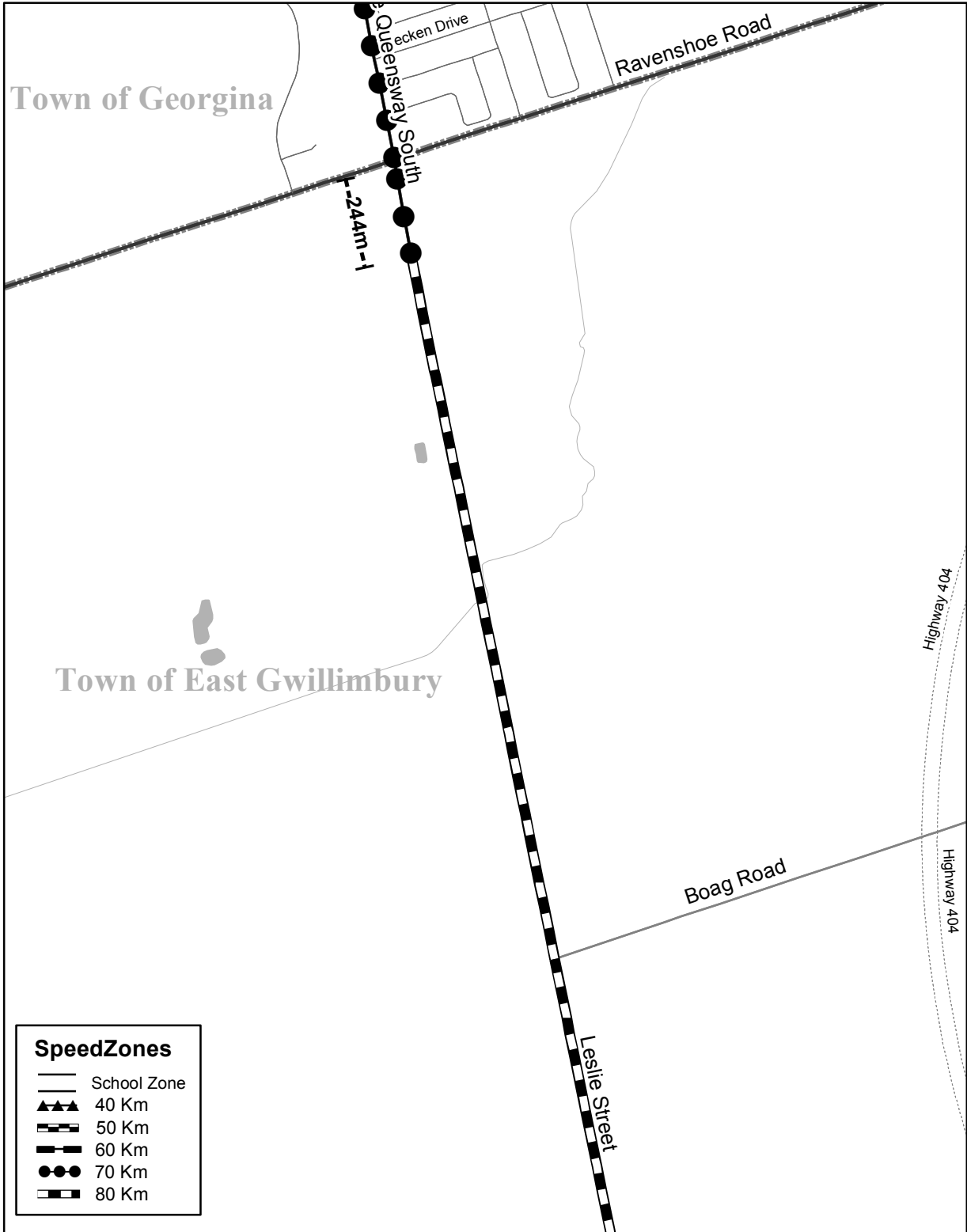


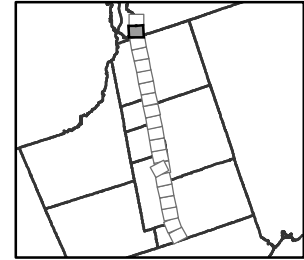
Regional Road #12



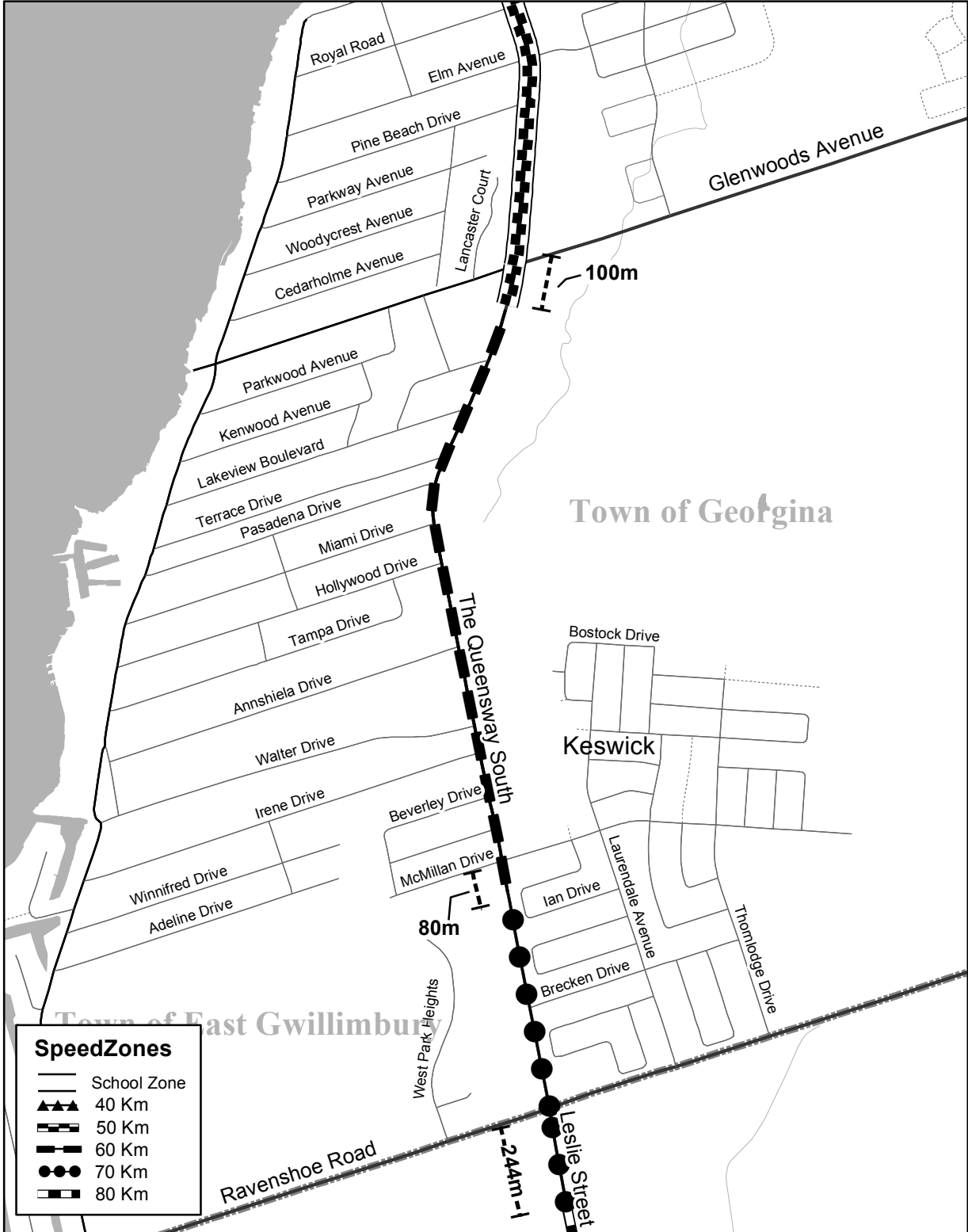


Regional Road #12



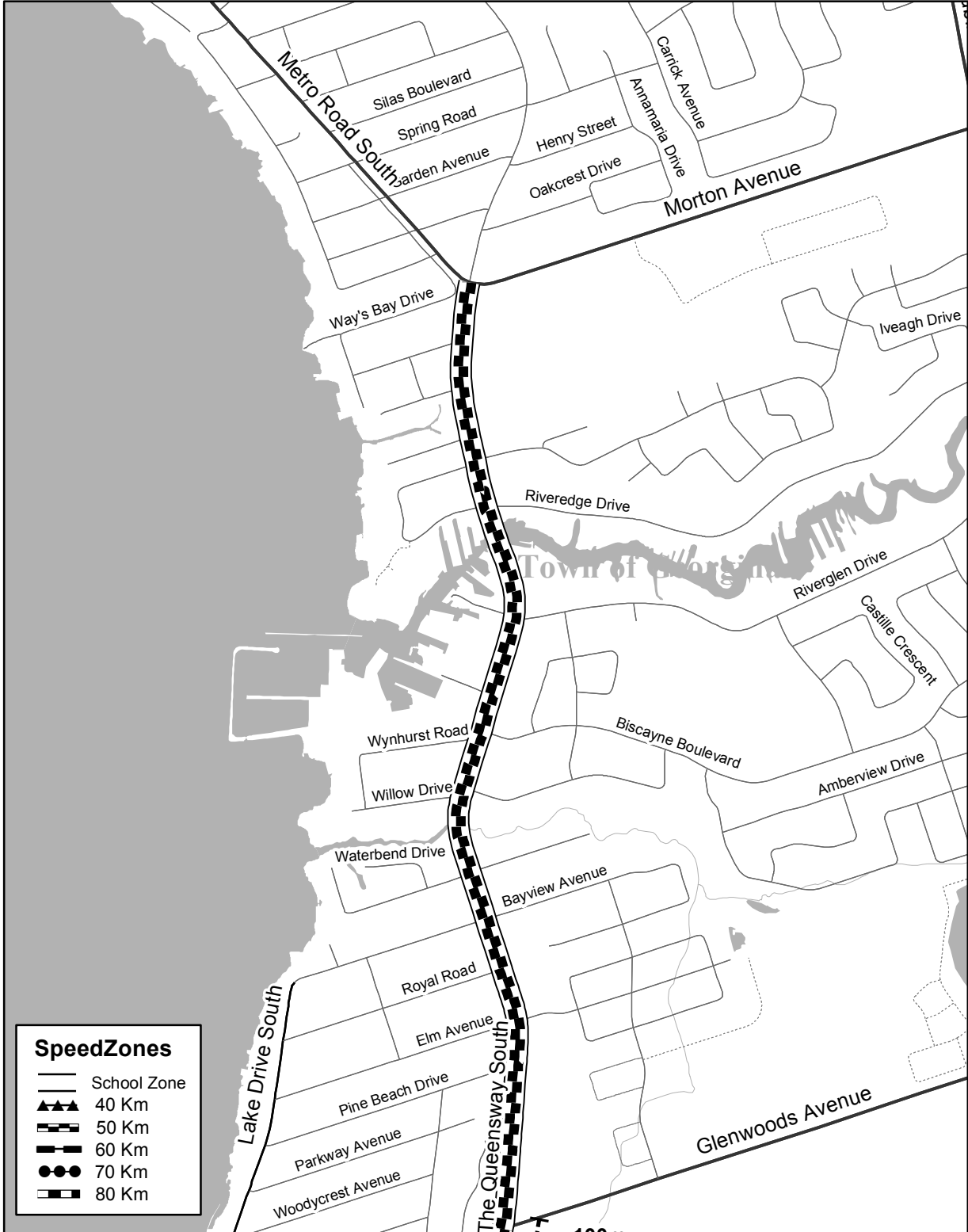


Regional Road #12





Regional Road #12



SpeedZones

- School Zone
- 40 Km
- 50 Km
- 60 Km
- 70 Km
- 80 Km