



Lake Simcoe Region
conservation authority

2014 Budget Presentation
York Region
December 12, 2013

A Watershed for Life



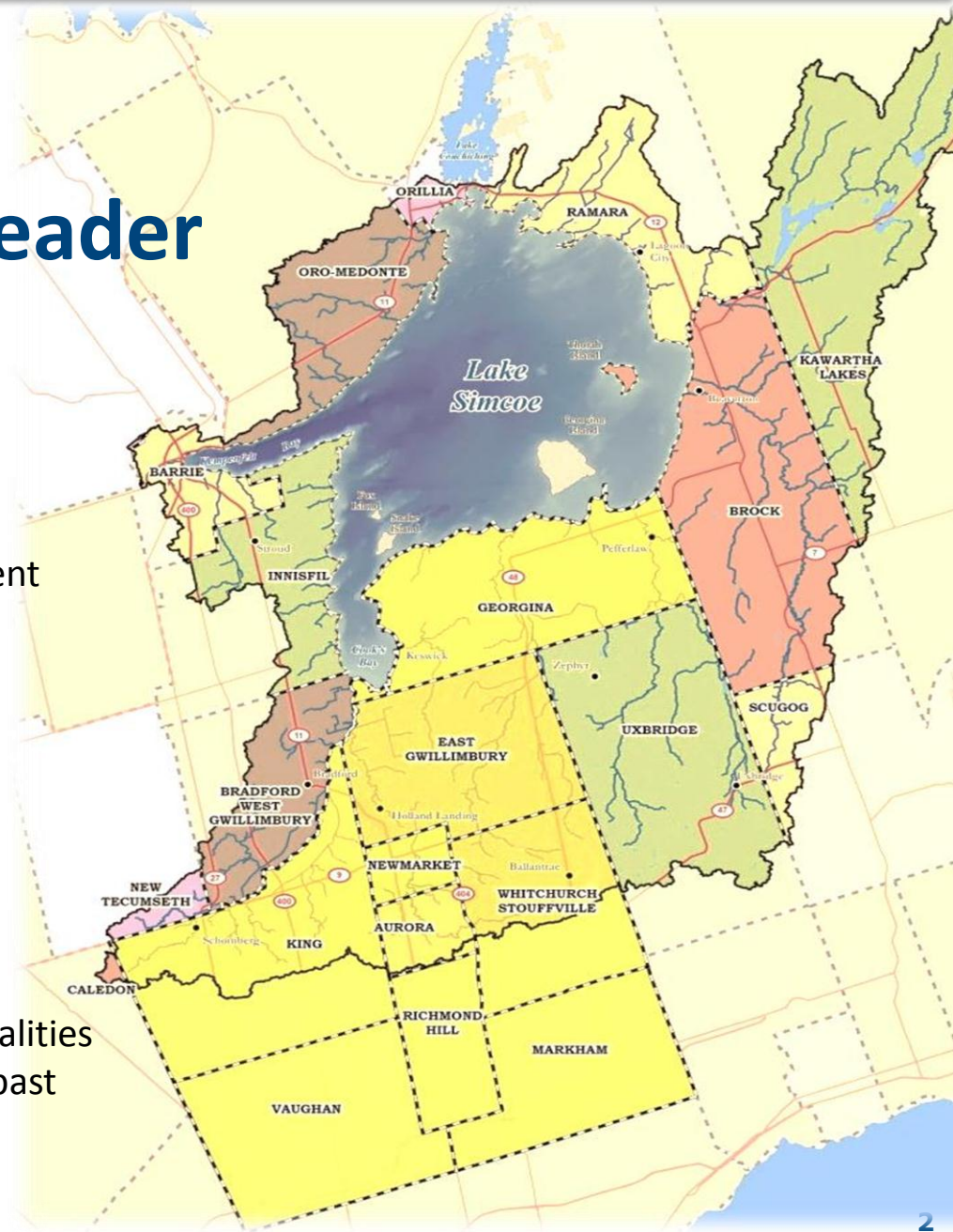
LSRCA

An Environmental Leader

- Since 1951, LSRCA has been leading watershed protection and restoration
- In 2009 - LSRCA won the coveted Thies International Riverprize award – the Nobel prize for watershed management



- York Region and its six northern municipalities have been significant partners over the past 60 years



Growth Must Support a Healthy Lifestyle

- Healthy lakes, rivers and green space provide opportunities for outdoor activities
- Growth must support an active, healthy lifestyle



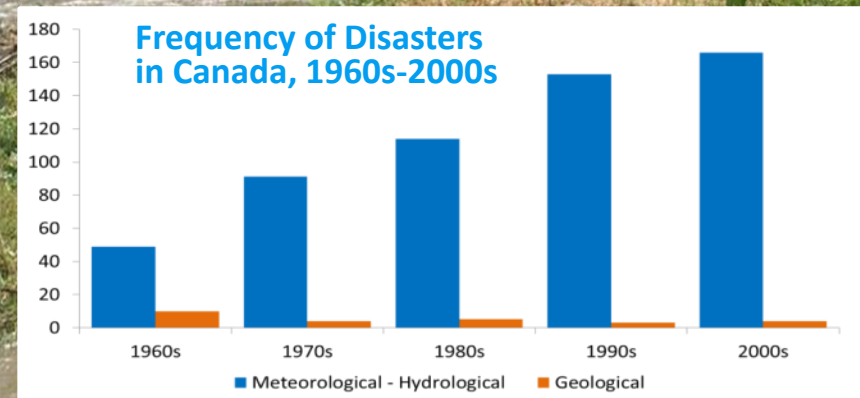
Climate Change is Real

Weather events are intensifying.

Natural heritage features such as wetlands help:

- Reduce risk of flooding
 - Loss of life
 - Damage to municipal infrastructure
 - Damage to personal property
- Improve water quality and quantity

Barrie 2005



Source: ICLR, based on data from Public Safety Canada, 2013

Growth is Here

From 1971 to 2012 –
population in York Region increased by 234%

- **In 2007 LSRCA completed a study on phosphorus pollution – conclusions:**
 - The Lake and its tributaries are already beyond capacity
 - \$163 million required to meet annual 72 tonne phosphorus target
- Provincial phosphorus target now 44 tonnes
 - The Lake and rivers in York Region receive too much phosphorus

More growth is coming!

More than half of the approved growth in the watershed will happen in northern York Region



We Must Manage Growth

It's About Environmental Sustainability

- New growth must be **low impact**
- **No net increase** in phosphorus pollution
- Stormwater management must be **innovative** and **less costly**
- Emergency preparedness must be ensured
- Healthy and connected communities are developed
- **Key natural features** such as wetlands are protected

Demand for LSRCA services have increased in:

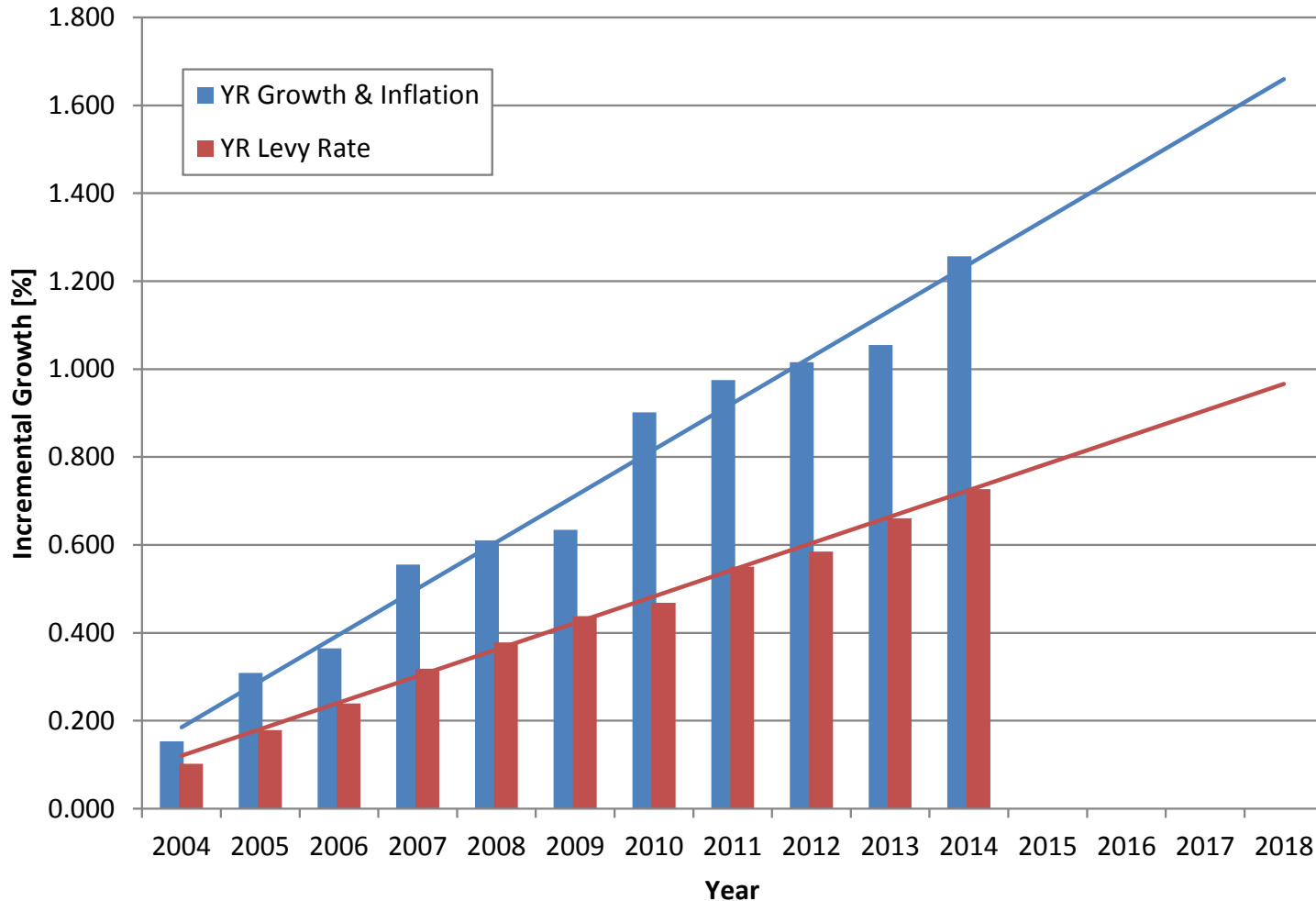
- Planning & Enforcement
- Education & Community Engagement
- Stewardship & Conservation Areas

Well Managed Growth Builds Resilience



A Growing Gap

York Region Assessment; Growth, Inflation and Levy [2004-2014]



2014 General & Special Capital Levy Budget Base Pressures

In (\$ 000s)	2014 Change			Total Gross Budget
2013 Approved Budget				\$3,964
<i>General Levy Budget Pressures</i>				
Cost of living adjustment	74			
<i>Special Capital Levy Pressures</i>				
Program costs increase	59			
Subtotal		133	3.3%	
Assessment Growth (CVA adjustment) on General Levy	57	57	1.5%	
Total 2014 Base Pressures Increase				190 4.8%
Total 2014 Proposed Base Budget				\$4,154

2014 Additional Requests

Priority	Category	York Region Amount
Compensation Adjustment	Growth	110
Capital Support Agreement	Growth	503
Cost Shared Priorities - 5 Growth Partners		
Service support for Direct Programs	Growth	129
Scanlon facilities operation	Growth	40
Scanlon infrastructure capital	Growth	150
Data Security & Management	Growth	75
Emerald Ash Borer	Enhancement	41
Total Additional Ask		\$ 1,048

Additional Funding

will enable financial sustainability & future service delivery

Dedicated Service to York Region municipalities:

- Planning reviews & approvals
- Implementation of RainScaping Program
- Consultation on Natural Heritage Features
- Increased response to enforcement issues
- Outreach, education & communications programs

The Benefits:

- Improve water quality & quantity
- Support water conservation goals
- Safeguard infrastructure through erosion control
- Reduce risk of flooding
- Optimize stormwater management cost
- Increase community engagement



Municipal Funding will enable

Efficiency & Investment - Space for People & Asset Maintenance

- More workspace - supports growing services & programs
- Manage fiscal responsibility – keep Scanlon assets in a state-of-good-repair
- Reduce exposure to liabilities
- Protect green space to support healthy outdoor activities

Data Security & Management - After people, data is our most valuable asset

- Protection of key environmental data
- Emergency preparedness and disaster recovery services

Natural Resource Protection - Emerald Ash Borer Program

- Assessment of Emerald Ash Borer impact



It's All Connected

Ecosystems

- Forests
- Wetlands
- Water
- Soil
- Plants
- Animals

Goods & Services

- Clean Water
- Food
- Fuel
- Energy
- Habitat

Sustainability

- Economy
- Resilient Environment
- Healthy People



Thank you

www.LSRCA.on.ca

Providing leadership for the protection and restoration of the environmental health and quality of Lake Simcoe and its watershed with our community, municipal and other government partners.