

**Welcome. The COVID-19 Briefing Webinar
will begin shortly.**



COVID-19 Briefing Webinar

Webinar 12 in the COVID-19 Briefing Series
September 27, 2021 - 12:15 p.m. to 1 p.m.

Dr. Cindy Shen, MD, MPH, CCFP, FRCPC
Public Health Physician, York Region Public Health

Dr. JoAnne Fernandes, MD, MPH, CCFP, FRCPC
Public Health Physician, York Region Public Health



THIS MEETING WILL BE RECORDED

Please note this meeting will be recorded.

- During this meeting, you will have the opportunity to contribute or ask questions
- Questions will be gathered and sorted to avoid duplication and ensure the best response
- Although your name will not appear on the screen to attendees, producers and presenters may have access to that information
- If you have questions about the recording of this webinar, please contact HEOCLiaison@york.ca

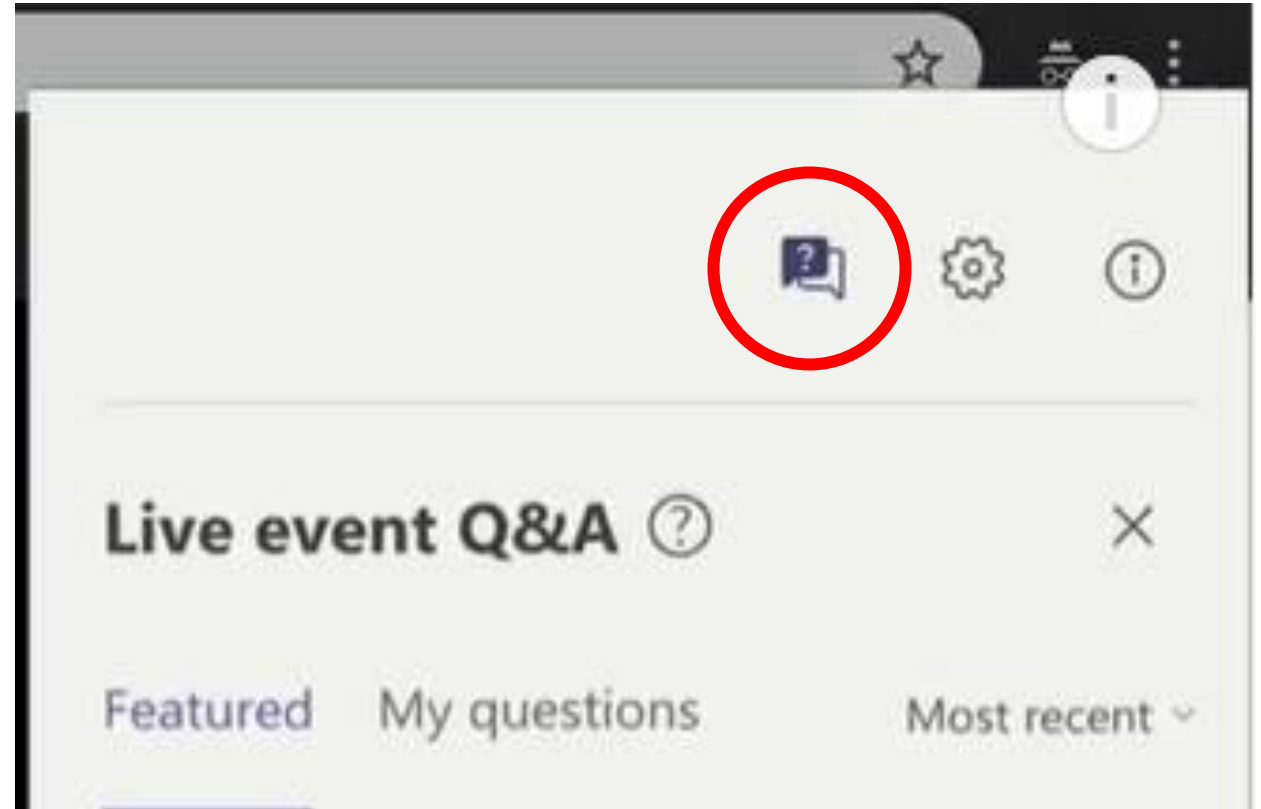
DO YOU HAVE A QUESTION?

To ask a question:

Select **Q&A** on the right side of the screen.

Type your question in the compose box, and then select **Send**.

Questions will be screened by the moderator and posed to the presenters.

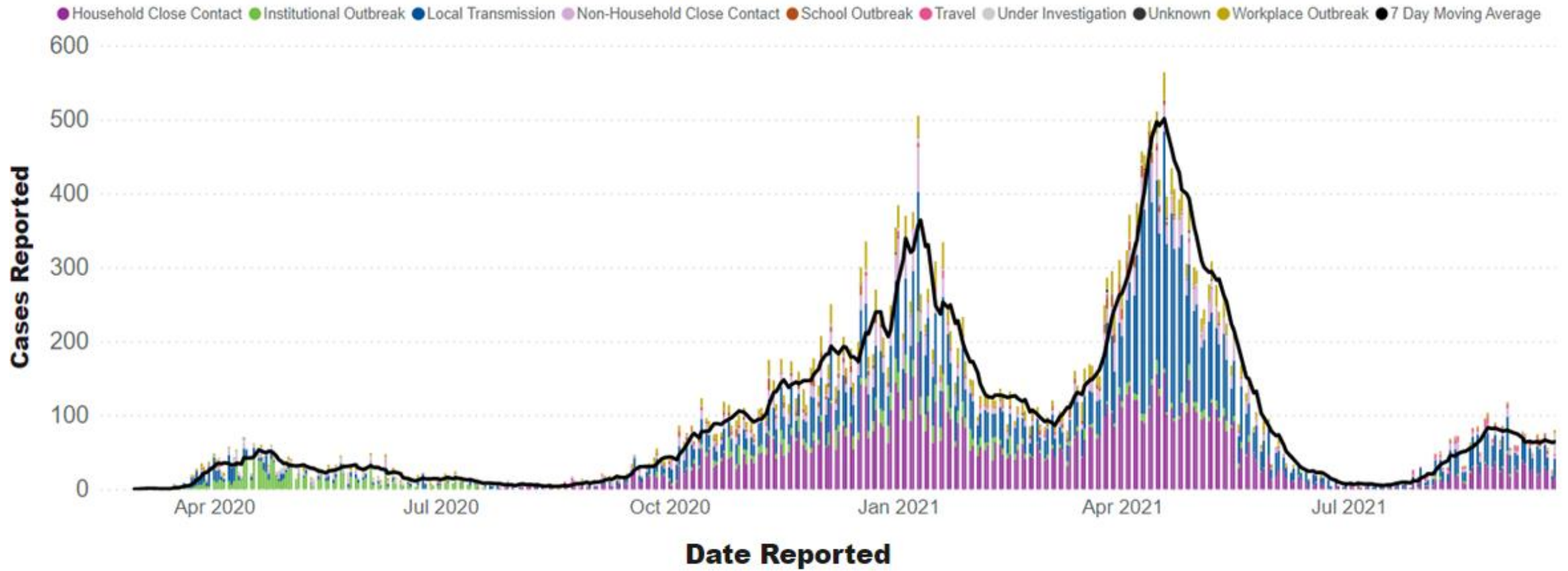


AGENDA

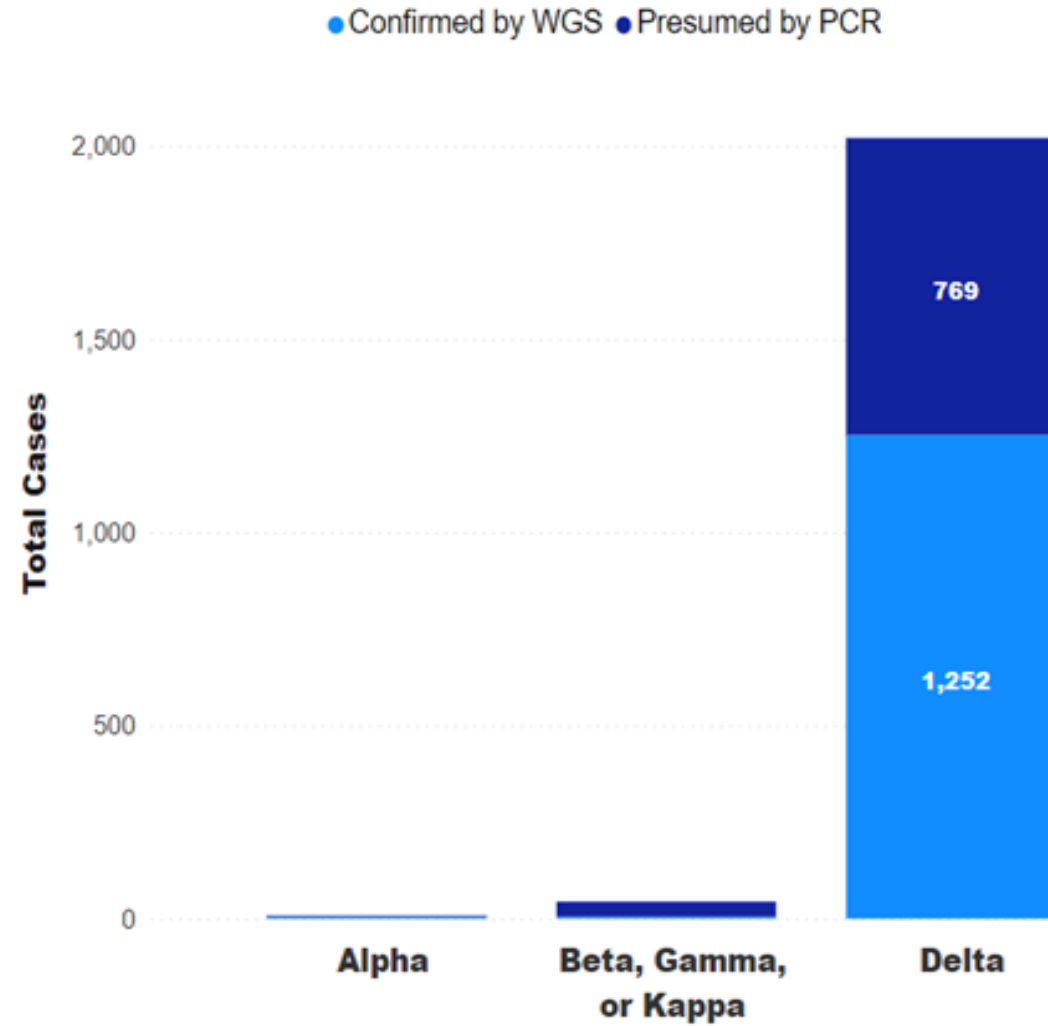
1. Epidemiological Updates
 - Case Counts, Variants, Data by Vaccination Status, Outbreaks
2. Local and Provincial Policy/Guidance Updates
 - Vaccine Certificate and Medical Exemptions, Capacity Limits
 - York Region Orders and Instructions
 - Provincial Guidance Updates
 - School and Childcare Screening Tool
3. Vaccine and Related Updates
 - Vaccine Coverage in York Region
 - Vaccine Clinics
 - Vaccine Name Updates
 - Third doses
 - Ivermectin
 - Pregnancy and Infertility
 - Long COVID
 - Antibody Testing
 - Previous Infections
4. 2021/2022 Universal Influenza Immunization Program

EPIDEMIOLOGY UPDATES

YORK REGION CASE COUNTS

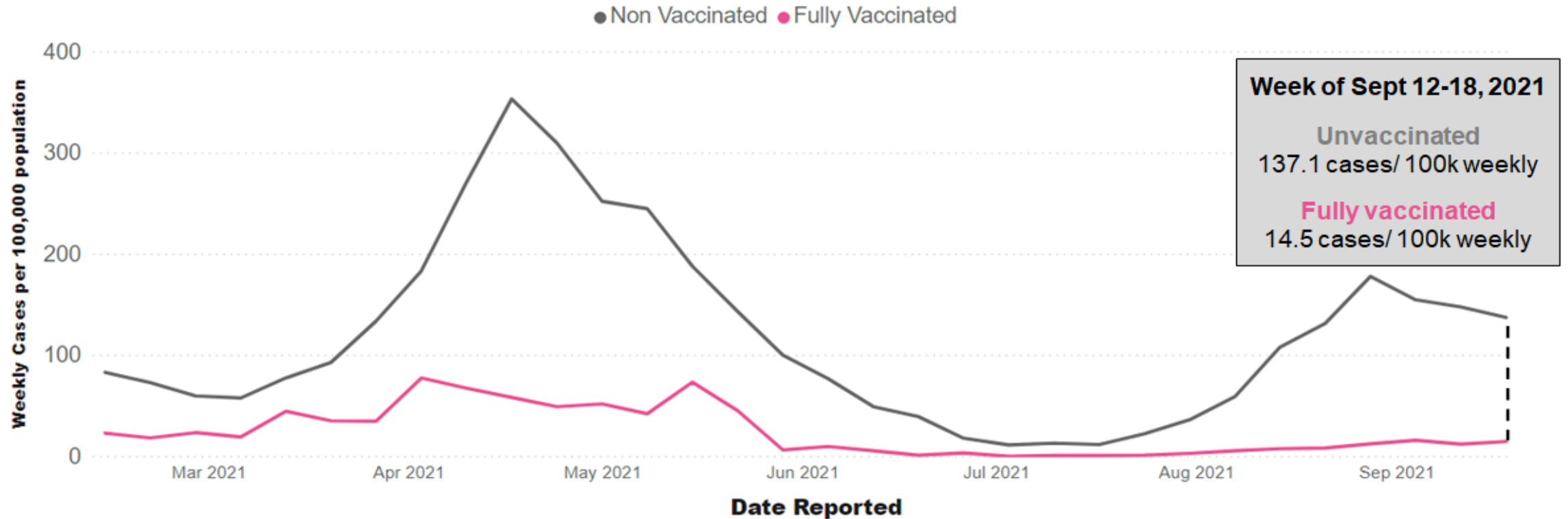


DELTA IS PREDOMINANT STRAIN IN ONTARIO AND YORK REGION



Reported cases between August 1st to September 22, 2021 in York Region

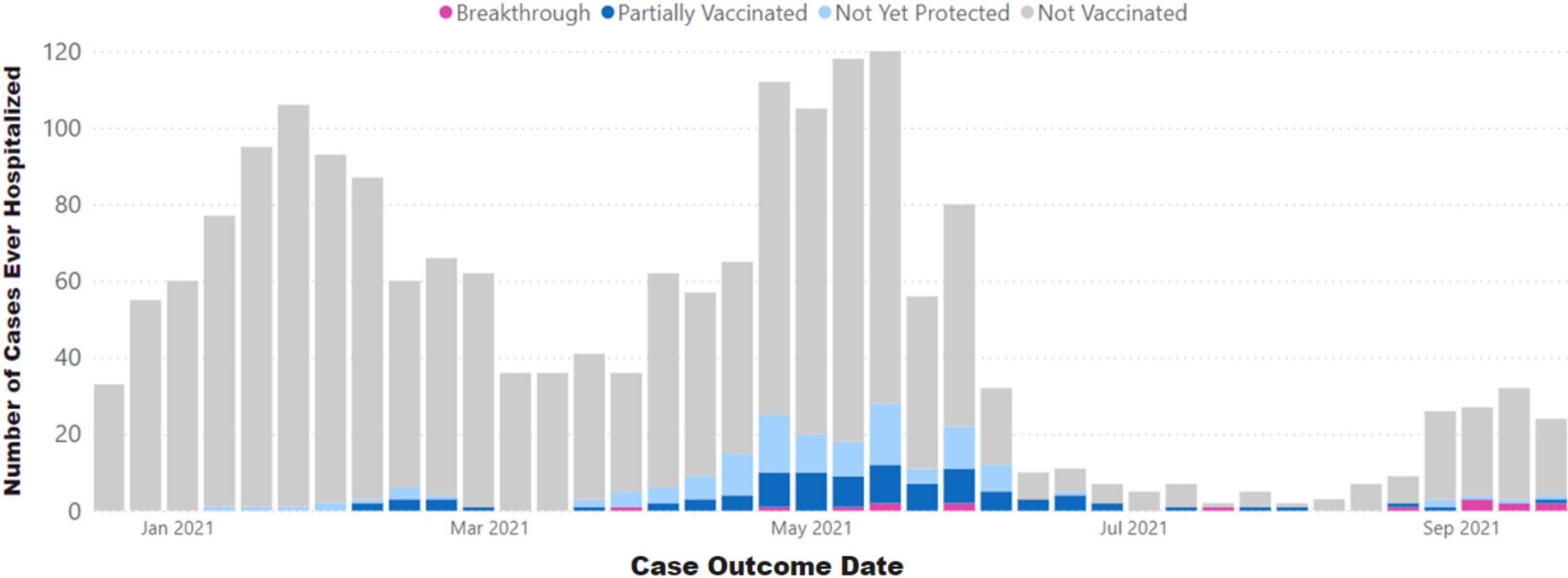
RISK OF INFECTION IS 9.5 TIMES HIGHER AMONG UNVACCINATED INDIVIDUALS



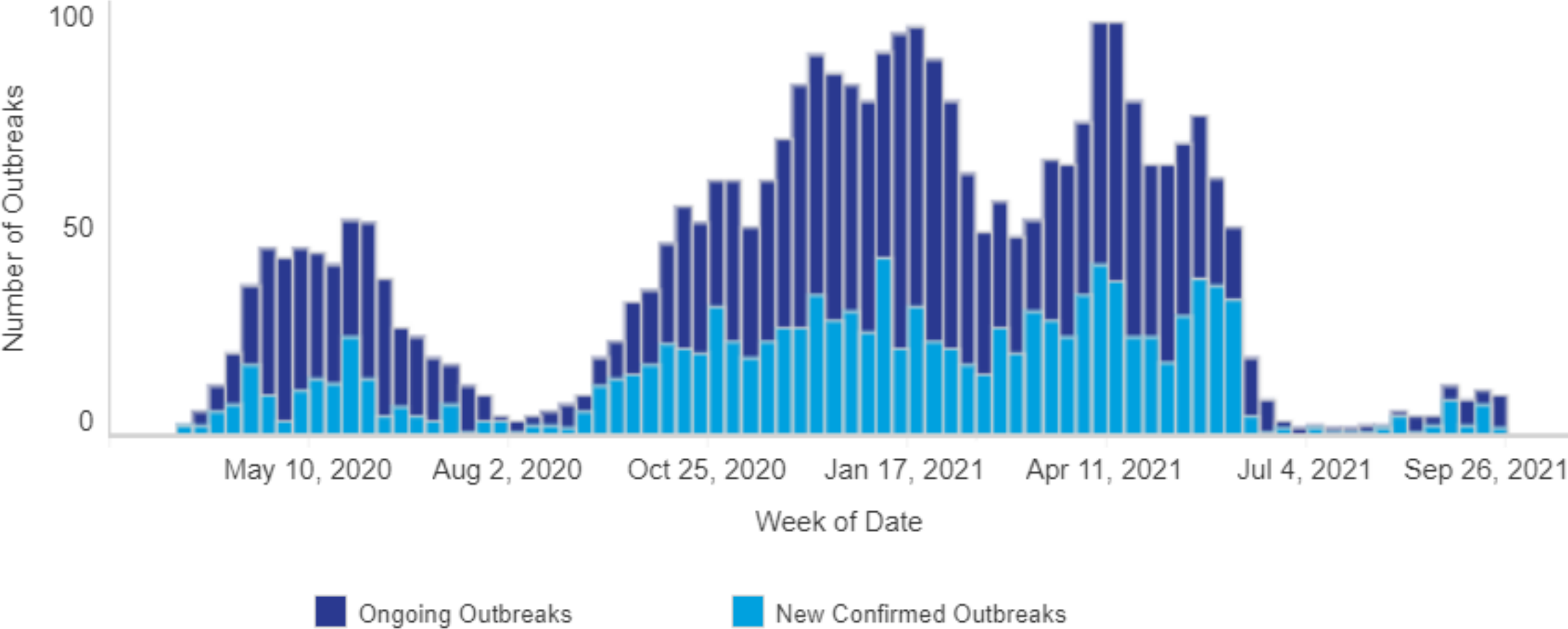
*Rates use population estimates from Environics Analytics, DemoStats 2021

The risk of COVID-19 infection among the unvaccinated vaccine-eligible population is **9.5 times higher** compared to the fully vaccinated population.

YORK REGION HOSPITALIZATIONS BY VACCINATION STATUS



OUTBREAKS IN YORK REGION HAVE BEEN INCREASING SINCE MID-AUGUST



The background is a solid teal color with several overlapping geometric shapes in a darker shade of teal. These shapes include a large semi-circle on the left, a large semi-circle on the right, and a large triangle pointing downwards in the center. The text is centered horizontally and vertically within the frame.

PROVINCIAL AND LOCAL POLICY AND GUIDANCE UPDATES

VACCINE CERTIFICATE

- As of September 22, 2021, Ontarians need to be fully vaccinated 14 days prior and provide their proof of vaccination along with photo ID to access certain public settings and facilities
 - An enhanced vaccine certificate, as well as a verification app to allow businesses to read the QR code, will be available beginning October 22
- This approach focuses on higher-risk indoor public settings where face coverings cannot always be worn
- Individuals who cannot receive the vaccine due to medical exemptions will be permitted entry with a physician/NP note until recognized medical exemptions can be integrated as part of a digital vaccine certificate



- [Using Your Vaccine Receipt: FAQs](#)
- [Ministry of Health Vaccination Guidance for Businesses and Organizations](#)
- [Q&A](#)

MEDICAL EXEMPTIONS

Summary of conditions and/or adverse events following immunization (AEFI) that **may** qualify for a medical exemption to COVID-19 vaccination are provided in [Ministry of Health – Medical Exemptions to COVID-19 Vaccination](#)

- Contraindications are rare
- Medical exemptions only allowed if certain conditions are met e.g. investigation by and discussion with allergist/immunologists/relevant specialist, option of another vaccine explored, may be time-limited
- Categories include:
 - **Pre-existing Conditions:** Severe allergic reaction or anaphylaxis to a component of a COVID-19 vaccine, Myocarditis prior to initiating an mRNA COVID-19 vaccine series (individuals aged 12-17 years old)
 - **Adverse Events following COVID-19 Immunization**
 - Severe allergic reaction or anaphylaxis following a COVID-19 vaccine
 - Thrombosis with thrombocytopenia syndrome (TTS)/VITT following the Astra Zeneca/COVISHIELD COVID-19 vaccine
 - Myocarditis or Pericarditis following a mRNA COVID-19 vaccine
 - Serious adverse event following COVID-19 immunization (e.g., results in hospitalization, persistent or significant disability/incapacity)
 - **Contraindications to Initiating an AstraZeneca Vaccine Series**
 - **Actively Receiving Monoclonal Antibody Therapy OR Convalescent Plasma Therapy for the Treatment or Prevention of COVID-19**

[Ministry of Health – Sample Medical Exemption Template](#)

CAPACITY LIMITS

NEWS RELEASE

Ontario Cautiously Easing Capacity Limits in Select Settings Where Proof of Vaccination is Required

Public Health and Health Care Indicators are Currently Stable or Improving


September 24, 2021

[Ontario Government - News release](#)


YORK REGION ORDERS AND INSTRUCTIONS

York Region's Medical Officer of Health has issued the following additional Order and Instructions for York Region residents and businesses:


- All residents of York Region must adhere to the [Section 22 Class Order](#)
- All residents and businesses of York Region must adhere to the [Section 22 Class Order](#)
- York Region businesses and workplace must continue following the [Letter of Instruction](#)
- York Region child care operators must follow the [Letter of Instruction](#)




Requires the public to follow instructions from York Region Public Health to self-isolate



Requires all persons responsible for hosting social gatherings at private and/or commercial gatherings to maintain a list of names and contact information for attendees



Requires all businesses and organizations to cooperate with Public Health for the purposes of investigation and contact tracing measures and support vaccination for staff



Sets out requirements for child care operators on daily COVID-19 screening, masking, physical distancing, maintenance of attendance records, restriction of persons entering the premise, cooperation with Public Health and general compliance

PROVINCIAL GUIDANCE UPDATES

COVID-19 – Fully Vaccinated Status in Ontario

An individual is considered fully vaccinated if it has been at least 14 days since they received the final dose of one of the following:

- *Full series or combinations of Health Canada authorized vaccines*
- One or two doses of a COVID-19 vaccine not authorized by Health Canada, followed by one dose of a COVID-19 mRNA vaccine authorized by Health Canada
- Three doses of a COVID-19 vaccine not authorized by Health Canada

PROVINCIAL GUIDANCE UPDATES (continued)

COVID-19 Guidance for Individuals Vaccinated outside of Ontario/Canada

Individuals who have received a partial or complete COVID-19 vaccine series outside of Ontario or Canada should contact their local public health unit, with proof of immunization, to have their COVID-19 immunization record documented in COVax prior to receiving any additional doses and for their vaccination receipts.

1. COVID-19 vaccines **authorized by Health Canada** administered outside of Ontario/Canada
 - Those who received a first shot outside of Ontario, should complete their vaccine series as close to the interval recommended by Ontario as possible
2. COVID-19 vaccines **not authorized by Health Canada**
 - Individuals who have proof of immunization and have received a complete one or two-dose series will be offered one additional dose of an mRNA vaccine.
3. **Unknown** COVID-19 Vaccine Product
 - Consider whether further investigation can be done to obtain proof of immunization
 - If the COVID-19 vaccine product used for a previous dose(s) remains unknown, or if written proof of immunization is provided for a vaccine whose generic or trade name is not recognized (see Appendix A), a new vaccine series should be started with a Health Canada authorized COVID-19 vaccine.

PROVINCIAL GUIDANCE UPDATES (continued)

COVID-19 Reference Document for Symptoms

- Most common symptoms of COVID-19 that require immediate self-isolation and COVID19 testing
- Other symptoms of COVID-19 for high-risk contacts that would require testing and further isolation

SCHOOL/CHILDCARE SCREENING TOOL

As of Friday, September 3rd, the school screening tool is now live at [here](#)

Can refer parents/staff/students/visitors to the above link or york.ca/SafeAtSchool

Screening

All York Region students, staff and visitors must complete York Region's screening every day before going to school, child care, day programs and camps.

Check for symptoms daily

COVID-19 SCHOOL AND CHILD CARE SCREENING TOOL

Students, child care attendees, staff and essential visitors must screen for COVID-19 each day before going to school or child care. Parents/guardians can fill this out on behalf of their child.

Date:
Name of child/staff/visitor:
School/child care centre name:

SCREENING QUESTIONS

1. Are you/your child currently experiencing any of these symptoms?

Choose any symptoms that are new, worsening and not related to other known causes or conditions.

Fever and/or chills Temperature of 37.8 degrees Celsius/100 degrees Fahrenheit or higher and/or chills	<input type="checkbox"/> Yes	<input type="checkbox"/> No
Cough or barking cough (croup) Continuous, more than usual, making a whistling noise when breathing (not related to asthma, post-infectious reactive airways or other known causes or conditions)	<input type="checkbox"/> Yes	<input type="checkbox"/> No
Shortness of breath Out of breath, unable to breathe deeply (not related to asthma or other known causes or conditions)	<input type="checkbox"/> Yes	<input type="checkbox"/> No
Sore throat or difficulty swallowing Painful swallowing (not related to seasonal allergies, acid reflux or other known causes or conditions)	<input type="checkbox"/> Yes	<input type="checkbox"/> No
Extreme tiredness Unusual fatigue/lack of energy (not related to depression, insomnia, thyroid dysfunction or other known causes or conditions) *If you/your child received a COVID-19 vaccination in the last 48 hours and are experiencing mild fatigue which only began after vaccination, select "No"	<input type="checkbox"/> Yes	<input type="checkbox"/> No
Muscle aches Unexplained, unusual or long-lasting (not related to sudden injury, fibromyalgia or other known causes or conditions) *If you/your child received a COVID-19 vaccination in the last 48 hours and are experiencing mild muscle aches/joint pain which only began after vaccination, select "No"	<input type="checkbox"/> Yes	<input type="checkbox"/> No
Runny or stuffy/congested nose Not related to seasonal allergies, being outside in cold weather or other known causes or conditions	<input type="checkbox"/> Yes	<input type="checkbox"/> No
Decrease or loss of taste or smell Not related to seasonal allergies, neurological disorders or other known causes or conditions	<input type="checkbox"/> Yes	<input type="checkbox"/> No
Vomiting and/or diarrhea Not related to irritable bowel syndrome, anxiety, menstrual cramps or other known causes or conditions	<input type="checkbox"/> Yes	<input type="checkbox"/> No

Stay safe. Stay Informed.
york.ca/COVID19

11 Last Updated September 9, 2021

Page 1 of 5



SCHOOL/CHILD CARE SCREENING TOOL

- Nausea removed
- Headache removed

★ Additions

SCREENING QUESTIONS

1. Are you/your child currently experiencing any of these symptoms?

Choose any symptoms that are new, worsening and not related to other known causes or conditions:

	Fever and/or chills Temperature of 37.8 degrees Celsius/100 degrees Fahrenheit or higher and/or chills	<input type="radio"/> Yes	<input type="radio"/> No
	Cough or barking cough (croup) Continuous, more than usual, making a whistling noise when breathing (not related to asthma, post-infectious reactive airways or other known causes or conditions)	<input type="radio"/> Yes	<input type="radio"/> No
	Shortness of breath Out of breath, unable to breathe deeply (not related to asthma or other known causes or conditions)	<input type="radio"/> Yes	<input type="radio"/> No
★	Sore throat or difficulty swallowing Painful swallowing (not related to seasonal allergies, acid reflux or other known causes or conditions)	<input type="radio"/> Yes	<input type="radio"/> No
★	Extreme tiredness Unusual fatigue/lack of energy (not related to depression, insomnia, thyroid dysfunction or other known causes or conditions) <i>*If you/your child received a COVID-19 vaccination in the last 48 hours and are experiencing mild fatigue which only began after vaccination, select "No"</i>	<input type="radio"/> Yes	<input type="radio"/> No
★	Muscle aches Unexplained, unusual or long-lasting (not related to sudden injury, fibromyalgia or other known causes or conditions) <i>*If you/your child received a COVID-19 vaccination in the last 48 hours and are experiencing mild muscle aches/joint pain which only began after vaccination, select "No"</i>	<input type="radio"/> Yes	<input type="radio"/> No
★	Runny or stuffy/congested nose Not related to seasonal allergies, being outside in cold weather or other known causes or conditions	<input type="radio"/> Yes	<input type="radio"/> No
	Decrease or loss of taste or smell Not related to seasonal allergies, neurological disorders or other known causes or conditions	<input type="radio"/> Yes	<input type="radio"/> No
	Vomiting and/or diarrhea Not related to irritable bowel syndrome, anxiety, menstrual cramps or other known causes or conditions	<input type="radio"/> Yes	<input type="radio"/> No

SCHOOL/CHILD CARE SCREENING TOOL

- Fully vaccinated
- Not fully vaccinated
- Previously positive

7 Questions

Definitions

Fully vaccinated: 14 days or more after an individual has received their second dose of two-dose COVID-19 vaccine series or their first dose of a one-dose COVID-19 vaccine series that is listed for emergency use by the World Health Organization or approved by Health Canada.

**A two dose series can include mixed dose vaccinations, for example AstraZeneca-Pfizer, Pfizer-Moderna, etc.*

Not fully vaccinated: Individual who has not received both doses of a two-dose COVID-19 vaccine series that is listed for emergency use by the World Health Organization or approved by Health Canada; OR an individual who has received their full COVID-19 vaccine series but less than 14 days has passed since the date of last vaccination.

Previously positive: Individual who was a confirmed case of COVID-19 in the last 90 days and has since been cleared by Public Health.

2. Is someone you/your child lives with currently experiencing any new COVID-19 symptoms and/or waiting for test results after experiencing symptoms? Yes No
** If the individual experiencing symptoms received a COVID-19 vaccination in the last 48 hours and is experiencing mild fatigue, muscle aches and/or joint pain which only began after vaccination, select "No". If fully vaccinated or previously positive in past 90 days and since cleared, select "No"*
3. In the last 10 days, have you/your child been identified as a "close contact" of someone who currently has COVID-19? Yes No
** If fully vaccinated or previously positive in past 90 days and since cleared, select "No"*
4. In the last 10 days, have you/your child received a COVID Alert exposure notification on your/their cellphone? Yes No
** If testing occurred and a negative result was received or if fully vaccinated or previously positive in the past 90 days and since cleared, select "No"*
5. In the last 14 days, have you/your child travelled outside of Canada AND:
• been advised to quarantine as per the federal quarantine requirements: AND/OR
• is the student/child under the age of 12 and/or not fully vaccinated? Yes No
6. Has a doctor, health care provider or public health unit told you that you/your child should currently be isolating (staying at home)? This can be because of an outbreak or contact tracing Yes No
7. In the last 10 days, have you/your child tested positive on a rapid antigen test or a home-based self-testing kit? Yes No
** If the student/child has since tested negative on a lab-based PCR test, select "No"*

**IF YOU ANSWERED "YES" TO ANY OF THE QUESTIONS ABOVE,
DO NOT GO TO SCHOOL OR CHILD CARE.**

See specific instructions below for next steps

**IF YOU ANSWERED "NO" TO ALL QUESTIONS,
YOU/YOUR CHILD MAY GO TO SCHOOL/CHILD CARE.**

Follow your school/child care's established process for sharing results of this daily screening



SCHOOL/CHILD CARE SCREENING TOOL

Symptomatic students must stay home until:

- They receive a negative COVID-19 test result and symptoms are improving for at least 24 hours and any gastrointestinal symptoms have resolved for 48 hours or,
- It has been 10 days since their symptom onset or,
- They receive a definitive alternative diagnosis by a health care professional that is not a transmissible viral illness with symptoms compatible with COVID-19 (e.g., asthma, allergic rhinitis).

COVID-19 VACCINE AND RELATED UPDATES

VACCINE COVERAGE



Coverage of Doses Administered to York Region Residents

Age Group	People Who Have Had at Least One Dose		People Who Have Had at Least Two Doses	
	Count	Proportion	Count	Proportion
80+	48,044	97.6%	46,701	94.8%
75 - 79	33,520	93.9%	32,868	92.1%
70 - 74	49,140	89.0%	48,115	87.1%
65 - 69	58,184	89.3%	56,816	87.2%
60 - 64	68,667	85.5%	66,808	83.1%
55 - 59	78,593	85.9%	75,995	83.1%
50 - 54	78,933	87.4%	75,957	84.1%
45 - 49	74,645	88.7%	71,411	84.9%
40 - 44	68,056	91.1%	64,642	86.5%
35 - 39	63,751	87.2%	59,849	81.9%
30 - 34	58,625	78.8%	54,332	73.1%
25 - 29	59,532	75.6%	54,820	69.6%
20 - 24	61,969	79.8%	57,294	73.8%
18 - 19	26,139	79.5%	24,285	73.9%
12 - 17	73,668	82.1%	65,485	73.0%
Eligible (12+)	901,466	85.6%	855,378	81.2%

Current as of 8:00 a.m., September 24

VACCINE CLINICS

Community Hub Clinics

Markham

Markham Stouffville Hospital COVID-19 Assessment Centre trailer

381 Church St.

By appointment only

Markham

Armada Community Centre

2401 Denison St.

Tuesday – 11:30 a.m. to 6:30 p.m.

Wednesday & Thursday – 9:30 a.m. to 4:30 p.m.

Vaughan

Maple Community Centre

10190 Keele St.

Monday & Wednesday – 11:30 a.m. to 6:30 p.m.

Sunday, Tuesday, Thursday, Friday, Saturday – 9:30 a.m. to 4:30 p.m.

Newmarket

York Region Administrative Centre

17250 Yonge St.

Tuesday & Thursday – 11:30 a.m. to 6:30 p.m.

Sunday, Monday, Wednesday, Friday, Saturday – 9:30 a.m. to 4:30 p.m.

Please refer patients to york.ca/covid19vaccine for information on pop up clinics in addition to community hub clinics



COVID-19 VACCINE IN PRIMARY CARE

- Reminder, Moderna and Pfizer vaccine is available to be ordered from York Region Public Health and administered at your primary care office
- If you are interested in storing and administering COVID-19 vaccine at your clinic, please fill out the [COVID-19 Vaccine Readiness Survey](#) and submit it to covid19vaccine@york.ca
- If you have any questions, please reach out to heocliaison@york.ca



COVID-19 VACCINE NAME CHANGE

- On September 16, 2021, both Pfizer and Moderna COVID-19 vaccines were given full Health Canada approval for anyone aged 12 and older
- With the full approval of the vaccines, Health Canada also revealed the new names:
 - Pfizer is now called "**Comirnaty**"
 - Moderna is now called "**Spikevax**"
 - AstraZeneca is now called "**Vaxzevria**"
- Health Canada has stated that the only changes made were to the names and not the vaccine themselves

ELIGIBILITY FOR THIRD DOSES OF COVID-19 VACCINATION

On September 14, the province issued guidance on [COVID-19 Vaccine Third Dose Recommendations](#), outlining who is eligible to receive a third dose:

- **Moderately to severely immunocompromised**, defined as:
 - Individuals receiving active treatment (e.g., chemotherapy, targeted therapies, immunotherapy) for solid tumour or hematologic malignancies
 - Recipients of solid-organ transplant and taking immunosuppressive therapy
 - Recipients of chimeric antigen receptor (CAR)-T-cell therapy or hematopoietic stem cell transplant (within two years of transplantation or taking immunosuppression therapy)
 - Individuals with moderate to severe primary immunodeficiency (e.g., DiGeorge syndrome, Wiskott-Aldrich syndrome)
 - Individuals with stage three or advanced untreated HIV infection and those with acquired immunodeficiency syndrome
 - Individuals receiving active treatment with the following categories of immunosuppressive therapies: anti-B cell therapies² (monoclonal antibodies targeting CD19, CD20 and CD22), high-dose systemic corticosteroids (refer to the CIG for suggested definition of high dose steroids), alkylating agents, antimetabolites, or tumor-necrosis factor (TNF) inhibitors and other biologic agents that are significantly immunosuppressive
- **Residents of Long-Term Care Homes (LTCH), High-Risk Retirement Homes (RH) and Elder Care Lodges**

An updated third dose eligibility referral [form](#) is now available at york.ca/COVID19Vaccine.

Ivermectin

- On August 31, 2021, [Health Canada released a safety alert](#) about improper use of Ivermectin, advising Canadians not to use either the veterinary or human drug formulations to prevent or treat COVID-19. There is currently no evidence that Ivermectin is safe or effective for this purpose; improper use could cause serious health problems
- Ivermectin is a prescription medication authorized only for the treatment of specific parasitic infections in Canada. It is also available in veterinary formulations not intended for human use
- The veterinary version of Ivermectin, especially at high doses, can be dangerous for humans and may result in serious health problems such as vomiting, diarrhea, low blood pressure, allergic reactions, dizziness, seizures, coma and even death.
- Everyone who is eligible is encouraged to get fully vaccinated as soon as possible; many convenient options, both walk-in and by appointment, are available at york.ca/covid19vaccine

PREGNANCY AND INFERTILITY

Incidence	Severity	Outcomes
<p>Rates of SARS-CoV-2 do not appear higher compared to non-pregnant reproductive age peers.</p> <p>Universal screening programs suggest a higher incidence of asymptomatic infection in pregnant individuals.</p>	<p>Pregnant individuals with COVID-19 have demonstrated a higher severity of illness (hospitalizations, ICU admission, need for mechanical ventilation and ECMO) compared to non-pregnant reproductive age peers.</p>	<p>Pregnant individuals with COVID-19 have increased maternal morbidity and mortality, obstetrical conditions, higher cesarean delivery rates, and neonatal complications (e.g. preterm birth) compared to pregnant individuals without COVID-19.</p>
Policy Implications		
<p>There has been low vaccine uptake among pregnant people despite reassuring safety and efficacy data, and despite evidence of increased morbidity and mortality among pregnant individuals with COVID-19. Efforts to increase awareness of the safety and benefits of vaccination against SARS-CoV-2 are needed to enhance rates of vaccination in this population.</p>		

- The Society of Obstetricians and Gynaecologists of Canada (SOGC) recommends that all individuals who are pregnant or those trying to become pregnant should receive the COVID-19 vaccination and can receive a vaccine at any point in pregnancy and/or during breastfeeding
- Data have not shown concerns with safety, and other vaccines (e.g. flu, pertussis) have been safely used in pregnancy for many years
- There is no evidence that any vaccines, including COVID-19 vaccines, cause fertility problems in women or men.

LONG COVID

- The “post COVID condition” (or long COVID) describes a range of symptoms which can persist for months after severe, mildly symptomatic or asymptomatic SARS-CoV-2 infection.
 - The most common of more than 200 reported symptoms include fatigue, shortness of breath, pain, sleep disturbances, anxiety, and depression
- A conservative estimate suggests that 57,000 to 78,000 Ontarians had or are currently experiencing the post COVID-19 condition
- Vaccination is the best way to prevent long COVID
 - Vaccination against COVID-19 reduces the likelihood of the post COVID-19 condition by reducing the chance of becoming infected.
 - Vaccination may reduce the likelihood of developing the post COVID-19 condition among those with post vaccine (“breakthrough”) infections

Ontario Science Table: Understanding the Post COVID-19 Condition (Long COVID) and the Expected Burden for Ontario

ANTIBODY TESTING

- Serology should not be used as a diagnostic or screening test for COVID-19
- Serology is not recommended to assess for immunity to COVID-19 following immunization or make immunization decisions
- Antibody results do not correlate with recovery or infectivity

PREVIOUS INFECTIONS

- Anyone who has been infected with COVID-19 is eligible and encouraged to get their full series of a COVID-19 vaccine **as soon as possible following end of isolation period**
- Reinfection is possible, and vaccination following infection leads to a very effective immune response that can help prevent reinfection, including against variants

VACCINE RESOURCES

- [VaxFacts Clinic](#): Patients can connect over the phone with doctors from Scarborough Health Network to answer questions about COVID-19 vaccines
- York Region COVID-19 Vaccine FAQ Page: york.ca/covid19vaccineinfo
- York Region Vaccine Clinic Page: york.ca/covid19vaccine

The background is a solid teal color with several overlapping geometric shapes in a darker shade of teal. These shapes include a large circle on the left, a large circle on the right, and a large triangle pointing downwards in the center. The text is centered horizontally and positioned in the upper half of the image.

2021/2022 Universal Influenza Immunization Program

ONTARIO UNIVERSAL INFLUENZA IMMUNIZATION PROGRAM

The publicly funded influenza vaccines available for the 2021/2022 UIIP include:

1. Quadrivalent Inactivated Vaccine (QIV) for those ≥ 6 months of age (see [Table 1](#))
2. High-Dose Quadrivalent Inactivated Vaccine (QIV-HD) for those ≥ 65 years only
3. Adjuvanted Trivalent Inactivated Vaccine (TIV-adj) for those ≥ 65 years only

[2021/2022 Universal Influenza Immunization Program \(UIIP\) \(Ministry web page\)](#)
[york.ca/vaccineinventory \(York Region web page\)](#)

TIMING OF IMMUNIZATION

Month	Populations
October	Individuals at high-risk of complications or hospitalizations (Appendix A) due to influenza and health care providers
November and ongoing	General population

PRIORITIZE INFLUENZA VACCINE ADMINISTRATION FOR SENIORS:

October	QIV-HD	Congregate Settings such as LTC, hospitals, high risk retirement homes. Seniors with multiple co-morbid conditions
	TIV-Adj or QIV	Seniors in general / without multiple co-morbid conditions
November and Ongoing	QIV-HD, TIV-Adj or QIV	All seniors

Q&A PERIOD

LINKS TO BOOKMARK

Centre for Effective Practice

[COVID-19 Resource Centre](#) - practical evidence for primary care

York Region

[york.ca/healthprofessionals](#) - health care provider specific page

[york.ca/COVID19](#) - general COVID-19 page

Public Health Ontario

[Report of Adverse Event Following Vaccination](#) - form

Ministry of Health

[COVID-19 Guidance for the Health Care Sector](#) - Provincial COVID-19 guidance

[COVID-19 Vaccine-Relevant Information and Planning Resources](#) - Provincial vaccination guidance

YORK.CA/HEALTH PROFESSIONALS

- CANCER ▾
- COVID-19 ▾
- DENTAL ▾
- ENVIRONMENTAL HEALTH ▾
- FOOD SAFETY ▾
- HEALTH AT WORK ▾
- HEALTH INFORMATION LINE
- HEALTH PROFESSIONALS ▲
- Announcements and Resources
- Cannabis
- Child Growth and Development
- COVID-19 Information for Health Professionals
- Early Years Support Services Registry
- Ebola Virus Disease for Health Professionals
- E-Newsletter for Health Care Professionals
- Health Statistics and Reports
- Infectious Diseases and Outbreak Management
- Information for Dental and Healthcare Providers
- Mental Health and Wellbeing
- Opioids
- Quitting Smoking
- Tuberculosis
- Vaccination Information for Healthcare Professionals



Announcements and Resources

York Region provides important public health updates and offers events and resources, like the Public Health Matters newsletter, to support health care providers



COVID-19 Information for Health Professionals

York Region Public Health continues to provide support for health professionals related to COVID-19 (formerly referred to as novel coronavirus or 2019-nCoV)



Cannabis

Cannabis, also known as marijuana, weed or pot, can be consumed for medical and non-medical purposes. Find out more about legalization and the health effects of cannabis use in adults and youth.



Child Growth and Development

Find tools and resources for parents to help children grow and develop. When parents know what to expect at each stage of development, it can be easier to meet their child's needs and understand their behaviour.



E-Newsletter for Health Care Professionals

Sign up to receive the quarterly Public Health Matters E-Newsletter for health care professionals.



Early Years Support Services Registry

This is a resource for health, early learning and child care professionals in York Region who wish to refer a young child or their family for support services. It provides information about programs and services available including details regarding eligibility and

NEWSROOM

Connect With Us!

- Facebook
- Twitter
- YouTube
- LinkedIn
- Flickr
- Instagram
- Pinterest
- e-News
- Mobile App

Campaigns & Projects



Radon: Test Your Home

You can't see, taste or smell radon but it is the second leading cause of lung cancer. Learn more about radon and the York Region study.

[More Campaigns & Projects >>](#)

Contact Us

Health Connection

EMAIL

THANK YOU



APPENDIX A: INDIVIDUALS AT HIGH RISK OF INFLUENZA RELATED COMPLICATIONS OR MORE LIKELY TO REQUIRE HOSPITALIZATION

- All pregnant women
- People who are residents of nursing homes or other chronic care facilities
- People ≥ 65 years of age
- All children 6 months to 4 years of age
- Indigenous peoples
- Adults or children 6 months of age and over with the following chronic health conditions:
 - o Cardiac or pulmonary disorders
 - o Diabetes mellitus or other metabolic disease
 - o Cancer
 - o Conditions or medication which compromise the immune system
 - o Renal disease
 - o Anemia or hemoglobinopathy
 - o Neurologic or neurodevelopment conditions
 - o Morbid obesity (body mass index of ≥ 40)
 - o Children and adolescents (6 months to 18 years) undergoing treatment with acetylsalicylic acid for long periods