



Pet Care

Cage and Crate Cleaning

1 Prepare to clean



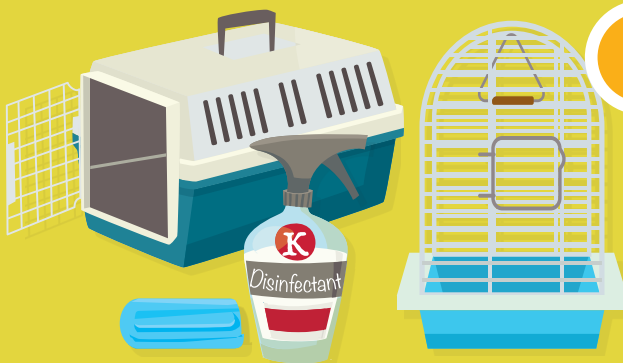
- Wash hands and put on gloves and other protective equipment, as needed
- Follow extra precautions for cleaning bird cages i.e. wear a surgical mask and keep residents away from cage cleaning area

2 Clean pet items and cage



- Remove pets, bedding, toys, food and water dishes from the cage
- Dispose of food, droppings, and bedding material in a garbage bag (pregnant staff should not handle litter boxes)
- Clean bowls, toys and cage surfaces in a utility sink. Do not use kitchen sinks. Use soap and scrub brush and then rinse with water
- Wash and dry bedding and towels

3 Disinfect pet items and cage



- Apply disinfectant* to items that have been cleaned
- Rinse disinfected items and dry them
- Clean and disinfect cleaning sink
- Remove gloves and wash hands

4 Re-make your pet's home



- Add new food and fresh water to cleaned bowls
- Return clean bedding and toys to cage
- Complete the pet cleaning log and schedule next cleaning

*Note: Use a disinfectant with a DIN (drug identification number) that is suitable for use on surfaces and objects in animal housing areas and follow the manufacturer's instructions for mixing and contact time. Apply disinfectant using a squirt (not a spray) bottle or use a rag dipped in a bucket of the concentrated disinfectant, replacing the rag with a new one each time to maintain the disinfectant concentration. A bleach solution 1:100 (500 ppm) concentration, is appropriate if made by mixing 10mL of bleach with 1 litre of water.

This material is provided by York Region Public Health. For more information, see Guidelines for Pets in Facilities — Long-term Care and Retirement Homes, York Region, 2023.

PUBLIC HEALTH

1-800-361-5653

TTY 1-866-512-6228

york.ca

**York Region**